



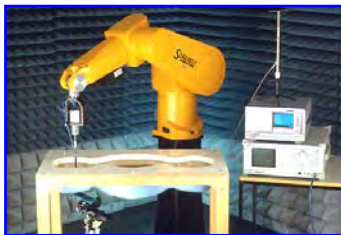
# A Test Lab Techno Corp.

Changan Lab : No. 140 -1, Changan Street, Bade City, Taoyuan County, Taiwan R.O.C.  
Tel : 886-3-271-0188 / Fax : 886-3-271-0190

## SAR EVALUATION REPORT



<b>Test Report No.</b>	<b>:</b>	<b>0802FS28</b>
<b>Applicant</b>	<b>:</b>	<b>GN NETCOM A/S</b>
<b>FCC ID</b>	<b>:</b>	<b>BCE-A335W</b>
<b>Model Name</b>	<b>:</b>	<b>Bluetooth class 1 plug and play dongle</b>
<b>Model Number</b>	<b>:</b>	<b>A335W</b>
<b>Dates of Test</b>	<b>:</b>	<b>Mar. 18 ~ Mar. 19, 2008</b>
<b>Test Environment</b>	<b>:</b>	<b>Ambient Temperature : 22 ± 2° C</b> <b>Relative Humidity : 40 - 70 %</b>
<b>Test Specification</b>	<b>:</b>	<b>Standard C95.1-1999</b> <b>IEEE Std. 1528-2003</b>
<b>Max. SAR</b>	<b>:</b>	<b>0.275 W/kg Body SAR</b>
<b>FCC Rule Part(s)</b>	<b>:</b>	<b>2.1093;FCC/OET Bulletin 65 Supplement C [July 2001]</b>
<b>Test Lab</b>	<b>:</b>	<b>Changan Lab</b>



1. The test operations have to be performed with cautious behavior, the test results are as attached.
2. The test results are under chamber environment of A Test Lab Techno Corp. A Test Lab Techno Corp. does not assume responsibility for any conclusions and generalizations drawn from the test results with regard to other specimens or samples.
3. The measurement report has to be written approval of A Test Lab Techno Corp. It may only be reproduced or published in full.

**Country Huang** 20080409  
**Measurement Center Manager**

**Sam Chuang** 20080409  
**Testing Engineer**



## Contents

<b>1. Description of Equipment Under Test (EUT)</b> .....	<b>3</b>
<b>2. Introduction</b> .....	<b>5</b>
<b>3. SAR Definition</b> .....	<b>6</b>
<b>4. SAR Measurement Setup</b> .....	<b>7</b>
<b>5. System Components</b> .....	<b>9</b>
5.1 DASY4 E-Field Probe System.....	9
5.2 Data Acquisition Electronic (DAE) System.....	12
5.3 Robot.....	12
5.4 Measurement Server.....	12
5.5 Device Holder for Transmitters.....	13
5.6 Phantom - SAM v4.0 .....	14
5.7 Data Storage and Evaluation.....	14
<b>6. Test Equipment List</b> .....	<b>17</b>
<b>7. Tissue Simulating Liquids</b> .....	<b>18</b>
7.1 Liquid Confirmation.....	19
<b>8. Measurement Process</b> .....	<b>21</b>
8.1 Device and Test Conditions .....	21
8.2 System Performance Check.....	22
8.3 Dosimetric Assessment Setup.....	24
8.4 Spatial Peak SAR Evaluation .....	26
<b>9. Measurement Uncertainty</b> .....	<b>27</b>
<b>10. SAR Test Results Summary</b> .....	<b>29</b>
10.1 Bluetooth Body SAR _ EUT Bottom to phantom close body.....	29
10.2 Bluetooth Body SAR _ EUT Tip to phantom close body .....	31
10.3 Test Setup Photo .....	33
10.4 Std. C95.1-1999 RF Exposure Limit.....	36
<b>11. Conclusion</b> .....	<b>37</b>
<b>12. References</b> .....	<b>38</b>



## **1. Description of Equipment Under Test (EUT)**

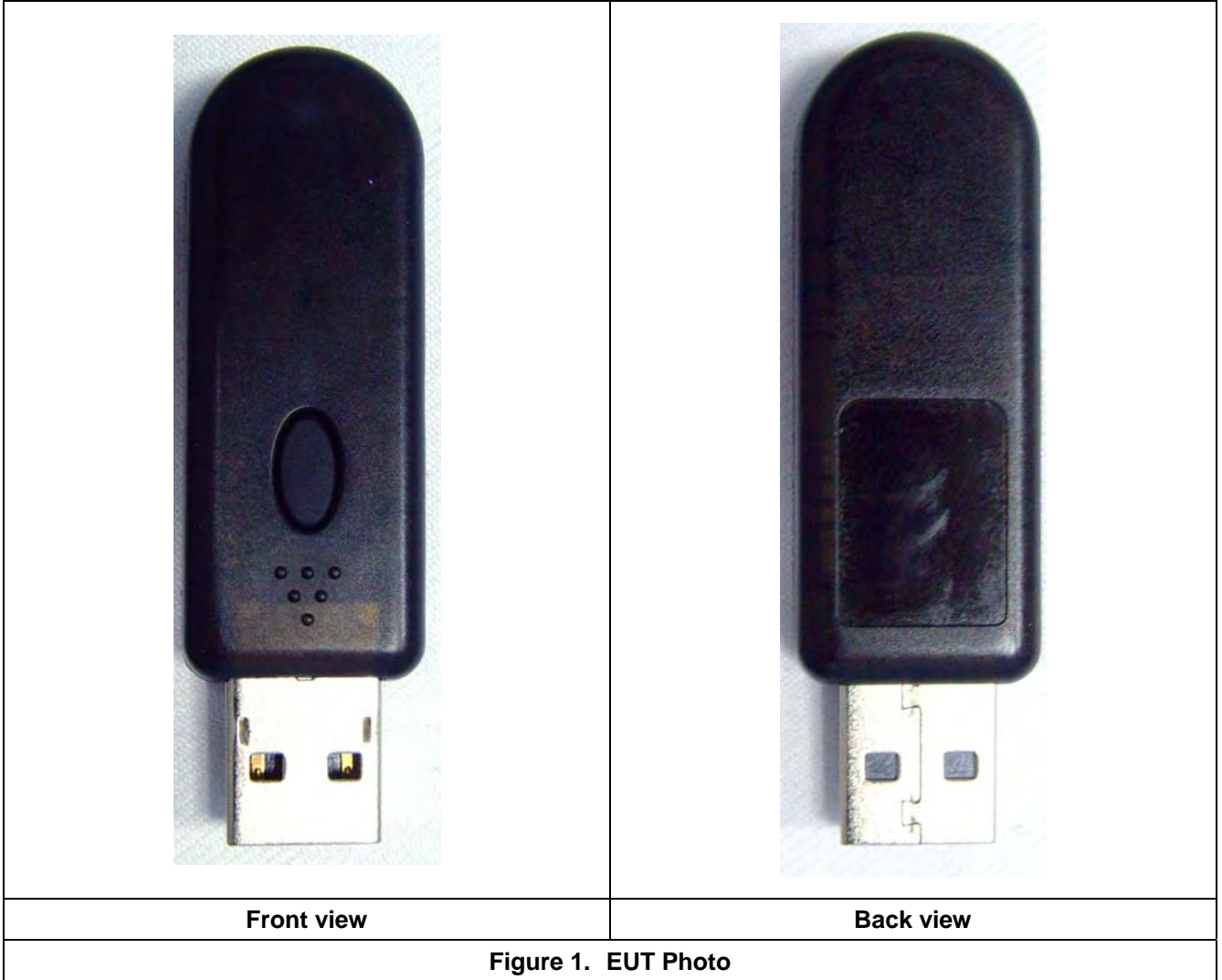
**Applicant :**

**GN NETCOM A/S**

**Lautrupbjerg 7 P.O. Box 99 DK-2750 Ballerup DENMARK**

**Manufacturer** : TECOM CO.,LTD.  
**Manufacturer Address** : 23 R&D Road 2 Science-Based Industrial Park  
Hsin-Chu Taiwan R.O.C.  
**FCC ID** : BCE-A335W  
**Model Name** : Bluetooth class 1 plug and play dongle  
**Trade Mark** : Jabra  
**Model Number** : A335W  
**Test Device** : Production Unit  
**Tx Frequency** : 2402 -2480 MHz (Bluetooth)  
**Max. RF Conducted Power** : 0.036 W (15.52 dBm ) Conducted  
**Max. SAR Measurement** : 0.275 W/kg Bluetooth Body SAR  
**HW Version** : NA  
**SW Version** : NA  
**Antenna Type** : Internal Type  
**Antenna Gain** : -1.59dBi  
**Device Category** : Portable  
**RF Exposure Environment** : General Population / Uncontrolled  
**Battery Option** : Standard  
**Application Type** : Certification

This wireless portable device has been shown to be capable of compliance for localized specific absorption rate (SAR) for uncontrolled environment / general population exposure limits specified in Standard C95.1-1999 and had been tested in accordance with the measurement procedures specified in IEEE Std. 1528-2003.





## **2. Introduction**

The A Test Lab Techno Corp. has performed measurements of the maximum potential exposure to the user of **GN NETCOM A/S Trade Mark : ; Jabra Model(s) : A335W**. The test procedures, as described in American National Standards, Institute C95.1 - 1999 [ 1 ] , FCC/OET Bulletin 65 Supplement C [July 2001] were employed and they specify the maximum exposure limit of 1.6mW/g as averaged over any 1 gram of tissue for portable devices being used within 20cm between user and EUT in the uncontrolled environment. A description of the product and operating configuration, detailed summary of the test results, methodology and procedures used in the equipment used are included within this test report.



### 3. SAR Definition

Specific Absorption Rate (SAR) is defined as the time derivative (rate) of the incremental energy (dw) absorbed by (dissipated in) an incremental mass (dm) contained in a volume element (dv) of a given density ( $\rho$ ). It is also defined as the rate of RF energy absorption per unit mass at a point in an absorbing body (see Figure 2).

$$\text{SAR} = \frac{d}{dt} \left( \frac{dw}{dm} \right) = \frac{d}{dt} \left( \frac{dw}{\rho dv} \right)$$

Figure 2. SAR Mathematical Equation

**SAR is expressed in units of Watts per kilogram (W/kg)**

$$\text{SAR} = \frac{\sigma E^2}{\rho}$$

Where :

$\sigma$  = conductivity of the tissue (S/m)

$\rho$  = mass density of the tissue (kg/m<sup>3</sup>)

$E$  = RMS electric field strength (V/m)

\* **Note** :

The primary factors that control rate of energy absorption were found to be the wavelength of the incident field in relations to the dimensions and geometry of the irradiated organism, the orientation of the organism in relation to the polarity of field vectors, the presence of reflecting surfaces, and whether conductive contact is made by the organism with a ground plane [ 2 ]



#### 4. SAR Measurement Setup

These measurements were performed with the automated near-field scanning system DASY4 from Schmid & Partner Engineering AG (SPEAG). The system is based on a high precision robot (working range greater than 0.9m) which positions the probes with a positional repeatability of better than  $\pm 0.025\text{mm}$ . Special E- and H-field probes have been developed for measurements close to material discontinuity, the sensors of which are directly loaded with a Schottky diode and connected via highly resistive lines (length = 300mm) to the data acquisition unit.

A cell controller system contains the power supply, robot controller, teach pendant (Joystick), and remote control, is used to drive the robot motors. The Measurement Server is based on a PC/104 CPU board with a 166MHz low-power Pentium, 32MB chipdisk and 64MB RAM. The necessary circuits for communication with either the DAE3 electronic box as well as the 16-bit AD-converter system for optical detection and digital I/O interface are contained on the DASY4 I/O-board, which is directly connected to the PC/104 bus of the CPU board. The PC consists of the Intel Pentium 4 2.4GHz computer with Windows2000 system and SAR Measurement Software DASY4, Post Processor SEMCAD, monitor, mouse, and keyboard. The Staubli Robot is connected to the cell controller to allow software manipulation of the robot. A data acquisition electronic (DAE) circuit performs the signal amplification, signal multiplexing, AD-conversion, offset measurements, mechanical surface detection, collision detection...etc. is connected to the Electro-optical converter (EOC). The EOC performs the conversion from the optical into digital electric signal of the DAE and transfers data to the Measurement Server.

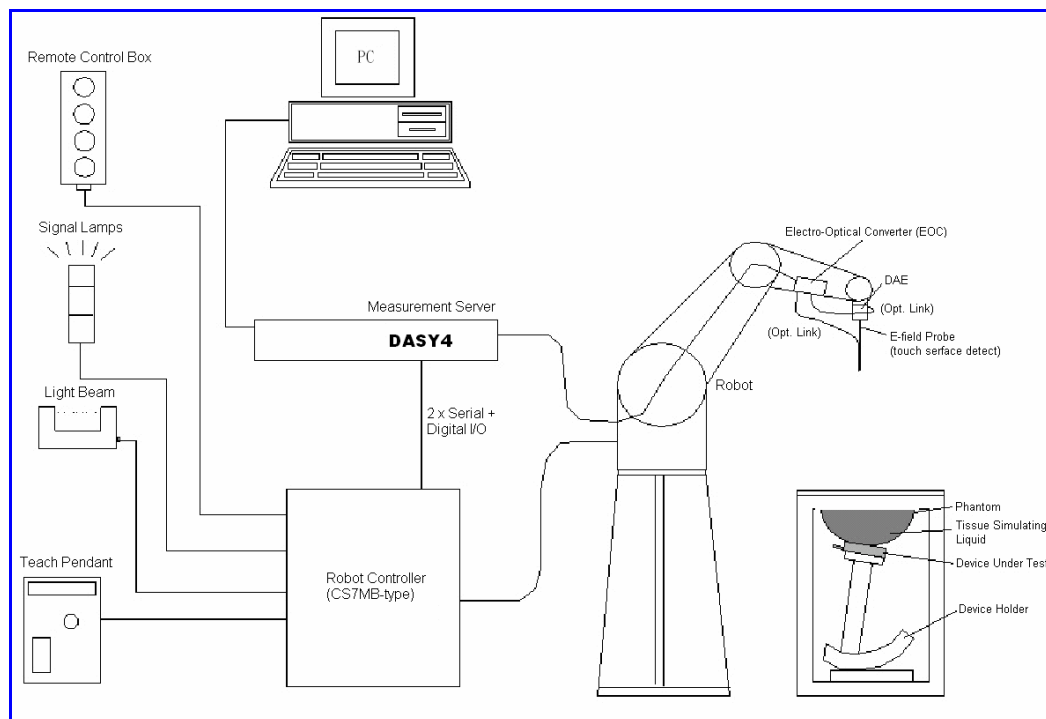


Figure 3. SAR Lab Test Measurement Setup



The DAE3 consists of a highly sensitive electrometer-grade preamplifier with auto-zeroing, a channel and gain-switching multiplexer, a fast 16 bit AD-converter and a command decoder and control logic unit. Transmission to the PC-card is accomplished through an optical downlink for data and status information and an optical uplink for commands and clock lines. The mechanical probe mounting device includes two different sensor systems for frontal and sidewise probe contacts. They are also used for mechanical surface detection and probe collision detection. The robot uses its own controller with a built in VME-bus computer. The system is described in detail in [ 3 ] .





## **5. System Components**

### **5.1 DASY4 E-Field Probe System**

The SAR measurements were conducted with the dosimetric probe ET3DV6 (manufactured by SPEAG), designed in the classical triangular configuration [ 3 ] and optimized for dosimetric evaluation. The probe is constructed using the thick film technique; with printed resistive lines on ceramic substrates. The probe is equipped with an optical multi-fiber line ending at the front of the probe tip. It is connected to the EOC box on the robot arm and provides an automatic detection of the phantom surface. Half of the fibers are connected to a pulsed infrared transmitter, the other half to a synchronized receiver. As the probe approaches the surface, the reflection from the surface produces a coupling from the transmitting to the receiving fibers. This reflection increases first during the approach, reaches maximum and then decreases. If the probe is flatly touching the surface, the coupling is zero. The distance of the coupling maximum to the surface is independent of the surface reflectivity and largely independent of the surface to probe angle. The DASY4 software reads the reflection during a software approach and looks for the maximum using a 2nd order fitting. The approach is stopped when reaching the maximum.

### 5.1.1 EX3DV3 E-Field Probe Specification

<b>Construction</b>	<p>Symmetrical design with triangular core</p> <p>Built-in optical fiber for surface detection System (EX3DV3 only)</p> <p>Built-in shielding against static charges</p> <p>PEEK enclosure material</p> <p>(resistant to organic solvents, e.q., glycol)</p>
<b>Calibration</b>	<p>In air from 10 MHz to 6 GHz</p> <p>In brain and muscle simulating tissue at frequencies of 900MHz, 1800MHz, 5200MHz and 5500MHz and 5800MHz (accuracy <math>\pm 8\%</math>)</p> <p>Calibration for other liquids and frequencies upon request</p>
<b>Frequency</b>	<p>10 MHz to &gt; 6 GHz; Linearity: <math>\pm 0.2</math> dB</p> <p>(30 MHz to 3 GHz)</p>
<b>Directivity</b>	<p><math>\pm 0.3</math> dB in brain tissue (rotation around probe axis)</p> <p><math>\pm 0.5</math> dB in brain tissue (rotation normal probe axis)</p>
<b>Dynamic Range</b>	<p>10 <math>\mu</math> W/g to &gt; 100mW/g; Linearity: <math>\pm 0.2</math>dB</p>
<b>Surface Detection</b>	<p><math>\pm 0.2</math> mm repeatability in air and clear liquids over diffuse reflecting surface(EX3DV3 only)</p>
<b>Dimensions</b>	<p>Overall length: 330mm</p> <p>Tip length: 20mm</p> <p>Body diameter: 12mm</p> <p>Tip diameter: 2.5mm</p> <p>Distance from probe tip to dipole centers: 1.0mm</p>
<b>Application</b>	<p>General dosimetry up to 6GHz</p> <p>Compliance tests of mobile phones</p> <p>Fast automatic scanning in arbitrary phantoms</p>



**Figure 4.**  
**EX3DV3 E-field Probe**



**Figure 5.**  
**Probe setup on robot**



### 5.1.2 EX3DV3 E-Field Probe Calibration

Each probe is calibrated according to a dosimetric assessment procedure described in [ 4 ] with accuracy better than  $\pm 10\%$ . The spherical isotropy was evaluated with the procedure described in [ 5 ] and found to be better than  $\pm 0.25\text{dB}$ . The sensitivity parameters (NormX, NormY, and NormZ), the diode compression parameter (DCP) and the conversion factor (ConvF) of the probe are tested.

The free space E-field from amplified probe outputs is determined in a test chamber. This is performed in a TEM cell for frequencies below 1GHz, and in a wave guide above 1GHz for free space. For the free space calibration, the probe is placed in the volumetric center of the cavity and at the proper orientation with the field. The probe is then rotated 360 degrees.

E-field temperature correlation calibration is performed in a flat phantom filled with the appropriate simulated brain tissue. The measured free space E-field in the medium correlates to temperature rise in a dielectric medium. For temperature correlation calibration a RF transparent thermistor-based temperature probe is used in conjunction with the E-field probe.

$$\text{SAR} = C \frac{\Delta T}{\Delta t}$$

Where :

$\Delta t$  = Exposure time (30 seconds),

$C$  = Heat capacity of tissue (head or body),

$\Delta T$  = Temperature increase due to RF exposure.

Or

$$\text{SAR} = \frac{|E|^2 \sigma}{\rho}$$

Where :

$\sigma$  = Simulated tissue conductivity,

$\rho$  = Tissue density ( $\text{kg/m}^3$ ).



## 5.2 Data Acquisition Electronic (DAE) System

### Cell Controller

Processor : Intel Pentium 4  
Clock Speed : 2.4GHz  
Operating System : Windows XP Professional

### Data Converter

Features : Signal Amplifier, multiplexer, A/D converter, and control logic  
Software : DASY4 v4.7 (Build 55) & SEMCAD v1.8 (Build 176)  
Connecting Lines : Optical downlink for data and status info  
Optical uplink for commands and clock

## 5.3 Robot

Positioner : Stäubli Unimation Corp. Robot Model: RX90L  
Repeatability :  $\pm 0.025$  mm  
No. of Axis : 6

## 5.4 Measurement Server

Processor : PC/104 with a 166MHz low-power Pentium  
I/O-board : Link to DAE3  
16-bit A/D converter for surface detection system  
Digital I/O interface  
Serial link to robot  
Direct emergency stop output for robot

## 5.5 Device Holder for Transmitters

In combination with the SAM Twin Phantom V4.0, the Mounting Device (POM) enables the rotation of the mounted transmitter in spherical coordinates whereby the rotation points is the ear opening. The devices can be easily, accurately, and repeat ably positioned according to the IEEE SCC34-SC2 and CENELEC specifications. The device holder can be locked at different phantom locations (left head, right head, and flat phantom).

**\*Note :** A simulating human hand is not used due to the complex anatomical and geometrical structure of the hand that may produced infinite number of configurations [ 6 ] . To produce the worst-case condition (the hand absorbs antenna output power), the hand is omitted during the tests.

Larger DUT cannot be tested using this device holder. Instead a support of bigger polystyrene cubes and thin polystyrene plates is used to position the DUT in all relevant positions to find and measure spots with maximum SAR values. Therefore those devices are normally only tested at the flat part of the SAM.



**Figure 6. Device Holder**

## 5.6 Phantom - SAM v4.0

The shell corresponds to the specifications of the Specific Anthropomorphic Mannequin (SAM) phantom defined in IEEE 1528-2003, CENELEC 50361 and IEC 62209. It enables the dosimetric evaluation of left and right hand phone usage as well as body mounted usage at the flat phantom region. A cover prevents evaporation of the liquid. Reference markings on the phantom allow the complete setup of all predefined phantom positions and measurement grids by manually teaching three points with the robot.



**Figure 7. SAM Twin Phantom**

<b>Shell Thickness</b>	2 ±0.2 mm
<b>Filling Volume</b>	Approx. 25 liters
<b>Dimensions</b>	810×1000×500 mm (H×L×W)

**Table 1. Specification of SAM v4.0**

## 5.7 Data Storage and Evaluation

### 5.7.1 Data Storage

The DASY4 software stores the assessed data from the data acquisition electronics as raw data (in microvolt readings from the probe sensors), together with all the necessary software parameters for the data evaluation (probe calibration data, liquid parameters and device frequency and modulation data) in measurement files with the extension .DA4. The postprocessing software evaluates the desired unit and format for output each time the data is visualized or exported. This allows verification of the complete software setup even after the measurement and allows correction of erroneous parameter settings. For example, if a measurement has been performed with an incorrect crest factor parameter in the device setup, the parameter can be corrected afterwards and the data can be reevaluated.



## 5.7.2 Data Evaluation

The DASY4 post processing software (SEMCAD) automatically executes the following procedures to calculate the field units from the microvolt readings at the probe connector. The parameters used in the evaluation are stored in the configuration modules of the software :

<b>Probe parameters :</b>	- Sensitivity	Normi, ai0, ai1, ai2
	- Conversion factor	ConvFi
	- Diode compression point	dcp <sub>i</sub>
<b>Device parameters :</b>	- Frequency	f
	- Crest factor	cf
<b>Media parameters :</b>	- Conductivity	$\sigma$
	- Density	$\rho$

These parameters must be set correctly in the software. They can be found in the component documents or they can be imported into the software from the configuration files issued for the DASY components. In the direct measuring mode of the multimeter option, the parameters of the actual system setup are used. In the scan visualization and export modes, the parameters stored in the corresponding document files are used.

The first step of the evaluation is a linearization of the filtered input signal to account for the compression characteristics of the detector diode. The compensation depends on the input signal, the diode type and the DC-transmission factor from the diode to the evaluation electronics. If the exciting field is pulsed, the crest factor of the signal must be known to correctly compensate for peak power. The formula for each channel can be given as :

$$V_i = U_i + U_i^2 \cdot \frac{cf}{dcp_i}$$

with  $V_i$  = compensated signal of channel  $i$  ( $i = x, y, z$ )  
 $U_i$  = input signal of channel  $i$  ( $i = x, y, z$ )  
 $cf$  = crest factor of exciting field (DASY parameter)  
 $dcp_i$  = diode compression point (DASY parameter)

From the compensated input signals the primary field data for each channel can be evaluated :

**E-field probes :**

$$E_i = \sqrt{\frac{V_i}{Norm_i \cdot ConvF}}$$



**H-field probes :**

$$H_i = \sqrt{V_i} \cdot \frac{a_{i0} + a_{i1}f + a_{i2}f^2}{f}$$

- with  $V_i$  = compensated signal of channel  $i$  ( $i = x, y, z$ )  
 $Norm_i$  = sensor sensitivity of channel  $i$  ( $i = x, y, z$ )  
 $\mu V/(V/m)^2$  for E-field Probes  
 $ConvF$  = sensitivity enhancement in solution  
 $a_{ij}$  = sensor sensitivity factors for H-field probes  
 $f$  = carrier frequency [GHz]  
 $E_i$  = electric field strength of channel  $i$  in V/m  
 $Hi$  = magnetic field strength of channel  $i$  in A/m

The RSS value of the field components gives the total field strength (Hermitian magnitude) :

$$E_{tot} = \sqrt{E_x^2 + E_y^2 + E_z^2}$$

The primary field data are used to calculate the derived field units.

$$SAR = E_{tot}^2 \cdot \frac{\sigma}{\rho \cdot 1000}$$

- with  $SAR$  = local specific absorption rate in mW/g  
 $E_{tot}$  = total field strength in V/m  
 $\sigma$  = conductivity in [mho/m] or [Siemens/m]  
 $\rho$  = equivalent tissue density in  $g/cm^3$

**\*Note :** that the density is set to 1, to account for actual head tissue density rather than the density of the tissue simulating liquid.

The power flow density is calculated assuming the excitation field to be a free space field.

$$P_{pwe} = \frac{E_{tot}^2}{3770} \quad \text{or} \quad P_{pwe} = \frac{H_{tot}^2}{37.7}$$

- with  $P_{pwe}$  = equivalent power density of a plane wave in  $mW/cm^2$   
 $E_{tot}$  = total electric field strength in V/m  
 $H_{tot}$  = total magnetic field strength in A/m





## 6. Test Equipment List

Manufacturer	Name of Equipment	Type/Model	Serial Number	Calibration	
				Last Cal.	Due Date
SPEAG	Dosimetric E-Filed Probe	ET3DV6	1530	Sep. 26, 2007	Sep. 26, 2008
SPEAG	2450MHz System Validation Kit	D2450V2	SN:712	Jan. 30, 2008	Jan. 30, 2009
SPEAG	Data Acquisition Electronics	DAE3	SN:393	Sep. 29, 2007	Sep. 29, 2008
SPEAG	Device Holder	N/A	N/A	NCR	NCR
SPEAG	Phantom	SAM V4.0	1009	NCR	NCR
SPEAG	Robot	Staubli RX90L	F00/589B1/A/01	NCR	NCR
SPEAG	Software	DASY4 V4.7 Build 55	N/A	NCR	NCR
SPEAG	Software	SEMCAD V1.8 Build 176	N/A	NCR	NCR
SPEAG	Measurement Server	SE UMS 001 BA	1021	NCR	NCR
R&S	Wireless Communication Test Set	CMU200	112387	Apr. 02, 2007	Apr. 02, 2008
Agilent	Network Analyzer	E5071B	MY42402996	Oct. 23, 2007	Oct. 23, 2008
Agilent	Dielectric Probe Kit	85070C	US99360094	NCR	NCR
Agilent	Power Meter	E4418B	GB40206143	May. 28,2007	May. 28,2008
Agilent	Power Sensor	8481H	3318A20779	May. 23,2007	May. 23,2008
Agilent	Signal Generator	8648C	3847A05201	Jul. 03, 2007	Jul. 03, 2008
Agilent	Dual Directional Coupler	778D	50334	NCR	NCR
Mini-Circuits	Power Amplifier	ZHL-42W-SMA	D111103#5	NCR	NCR
Mini-Circuits	Power Amplifier	ZVE-8G-SMA	D042005 671800514	NCR	NCR

**Table 2. Test Equipment List**



## **7. Tissue Simulating Liquids**

The mixture is calibrated to obtain proper dielectric constant (permittivity) and conductivity of the tissue.

The dielectric parameters of the liquids were verified prior to the SAR evaluation using an 85070C Dielectric Probe Kit and an 8720ES Network Analyzer.

INGREDIENT	FREQUENCY	
	HSL2.4GHz (Head)	MSL2.4GHz (Body)
Water	55.00%	68.64%
Dgmbe	45.00%	31.37%
Salt	0.00%	0.00%

**Table 3. Recipes for Head & Body Tissue Simulating Liquids**

### **IEEE SCC-34/SC-2 in 1528 recommended Tissue Dielectric Parameters**

The head tissue dielectric parameters recommended by the IEEE SCC-34/SC-2 in 1528 have been incorporated in the following table. These head parameters are derived from planar layer models simulating the highest expected SAR for the dielectric properties and tissue thickness variations in human head. Other head and body tissue parameters that have not been specified in 1528 are derived from the tissue dielectric parameters computed from the 4-Cole-Cole equation and extrapolated according to the head parameter specified in 1528.



Target Frequency	Head		Body	
(MHz)	$\epsilon_r$	$\sigma$ (S/m)	$\epsilon_r$	$\sigma$ (S/m)
150	52.3	0.76	61.9	0.80
300	45.3	0.87	58.2	0.92
450	43.5	0.87	56.7	0.94
835	41.5	0.90	55.2	0.97
900	41.5	0.97	55.0	1.05
915	41.5	0.98	55.0	1.06
1450	40.5	1.20	54.0	1.30
1610	40.3	1.29	53.8	1.40
1800 - 2000	40.0	1.40	53.3	1.52
2450	39.2	1.80	52.7	1.95
3000	38.5	2.40	52.0	2.73
5800	35.3	5.27	48.2	6.00

(  $\epsilon_r$  = relative permittivity,  $\sigma$  = conductivity and  $\rho = 1000 \text{ kg/m}^3$  )

**Table 4. Tissue dielectric parameters for head and body phantoms**

## 7.1 Liquid Confirmation

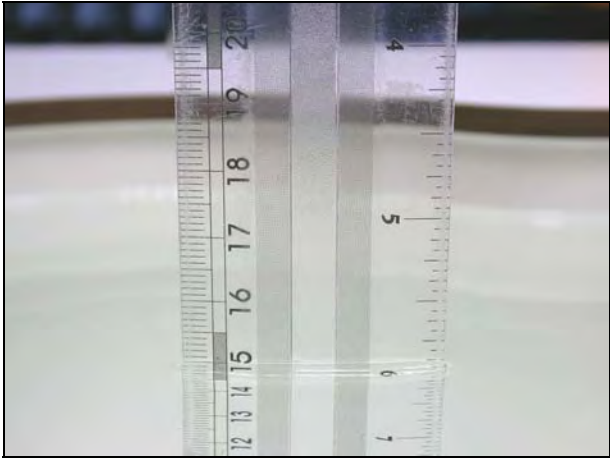
### 7.1.1 Parameters

Liquid Verify								
Ambient Temperature : $22 \pm 2 \text{ }^\circ\text{C}$ ; Relative Humidity : 40 -70%								
Liquid Type	Frequency	Temp ( $^\circ\text{C}$ )	Parameters	Target Value	Measured Value	Deviation (%)	Limit (%)	Measured Date
2450MHz Body	2450MHz	22.0	$\epsilon_r$	52.7	<b>52.2</b>	<b>-0.01</b>	$\pm 5$	Mar. 18, 2008
			$\sigma$	1.95	<b>1.97</b>	<b>0.01</b>	$\pm 5$	

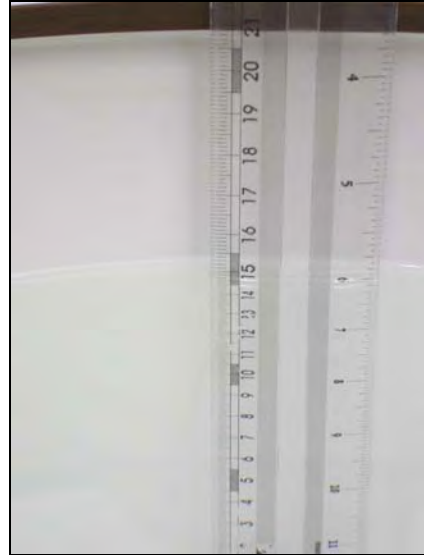
**Table 5. Measured Tissue dielectric parameters for head and body phantoms**

### 7.1.2 Liquid Depth

The liquid level was during measurement 15cm  $\pm$ 0.5cm.



**Figure 8. Head-Tissue-Simulating-Liquid**



**Figure 9. Body-Tissue-Simulating-Liquid**



## 8. Measurement Process

### 8.1 Device and Test Conditions

The Test Device was provided by **GN NETCOM A/S** for this evaluation. The spatial peak SAR values were assessed for the lowest, middle and highest channels defined by Bluetooth ( Ch0 = 2402MHz, Ch39 = 2441MHz, Ch78 = 2480MHz) systems. The antenna(s), battery and accessories shall be those specified by the manufacturer. The battery shall be fully charged before each measurement and there shall be no external connections.

<b>Usage</b>		Operates with a built-in test mode by client			
<b>Simulating human Head/Body</b>		Body			
<b>EUT Battery</b>		USB Interface DC 5V			
<b>Conducted power</b>	<b>Channel</b>		<b>Frequency MHz</b>	<b>Before SAR Test (dBm)</b>	<b>After SAR Test (dBm)</b>
	Bluetooth	Highest Channel - 78	2402	13.59	13.58
	Bluetooth	Middle Channel - 39	2441	15.52	15.50
	Bluetooth	Lowest Channel - 00	2480	15.15	15.14

Note: The EUT has built-in test mode that used to evaluate SAR.

## 8.2 System Performance Check

### 8.2.1 Symmetric Dipoles for System Validation

<b>Construction</b>	Symmetrical dipole with 1/4 balun enables measurement of feed point impedance with NWA matched for use near flat phantoms filled with head simulating solutions Includes distance holder and tripod adaptor Calibration Calibrated SAR value for specified position and input power at the flat phantom in head simulating solutions.
<b>Frequency</b>	450, 900, 1800, 2000, 2450, 5000MHz
<b>Return Loss</b>	> 20 dB at specified validation position
<b>Power Capability</b>	> 100 W (f < 1GHz); > 40 W (f > 1GHz)
<b>Options</b>	Dipoles for other frequencies or solutions and other calibration conditions are available upon request
<b>Dimensions</b>	D450V2 : dipole length 270 mm; overall height 330 mm D900V2 : dipole length 149 mm; overall height 330 mm D1800V2 : dipole length 72 mm; overall height 300 mm D2000V2 : dipole length 65 mm; overall height 300 mm D2450V2 : dipole length 51.5 mm; overall height 300 mm D5GHzV2 : dipole length 20.6 mm; overall height 450 mm



**Figure 10. Validation Kit**

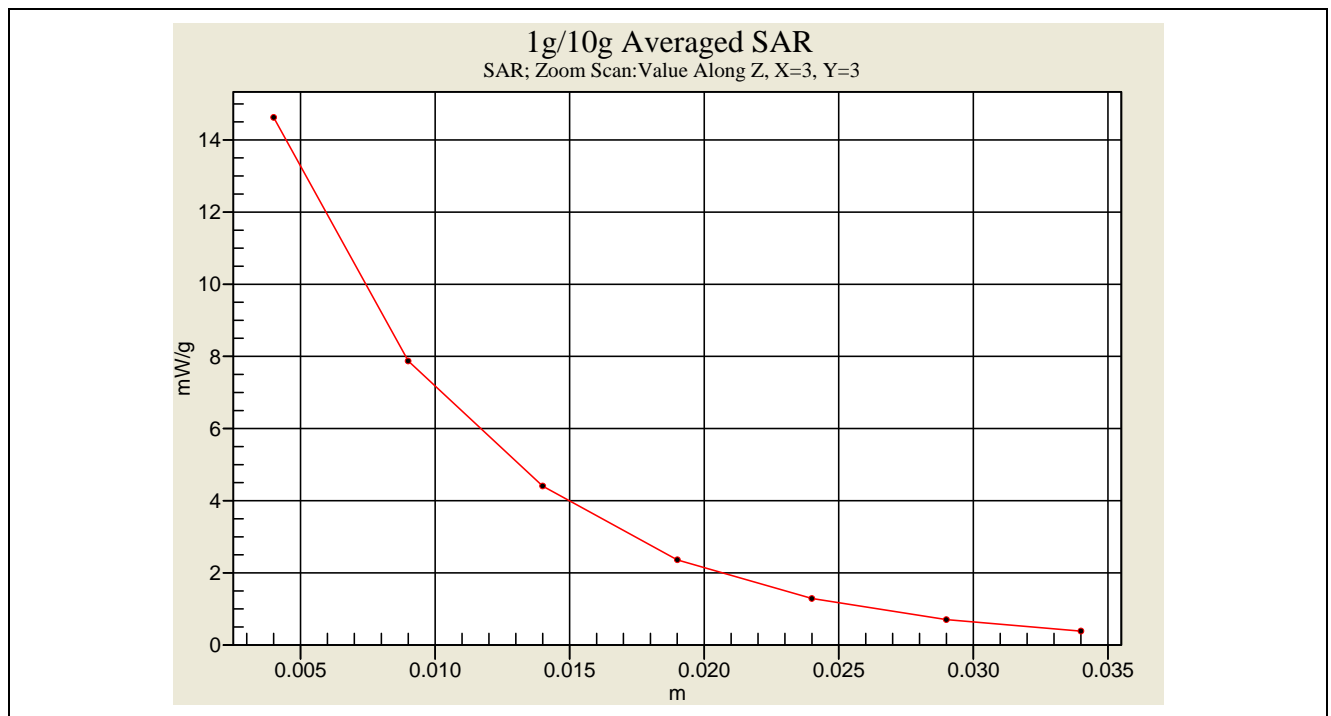


## 8.2.2 Validation

Prior to the assessment, the system validation kit was used to test whether the system was operating within its specifications of  $\pm 7\%$ . The validation was performed at 2450MHz.

Validation kit		Mixture Type	SAR <sub>1g</sub> [mW/g]		SAR <sub>10g</sub> [mW/g]		Date of Calibration
D2450V2-SN712		Body	53.6		24.76		Jan. 30, 2008
Frequency (MHz)	Power	SAR <sub>1g</sub> (mW/g)	SAR <sub>10g</sub> (mW/g)	Drift (dB)	Difference percentage		Date
					1g	10g	
2450 (Body)	250mW	13.1	6.35	-0.009	-2.2 %	2.6 %	Mar. 18, 2008
	Normalize to 1 Watt	52.4	25.4				

### Z-axis Plot of System Performance Check



**Body-Tissue-Simulating-Liquid 2.4GHz**



## 8.3 Dosimetric Assessment Setup

### 8.3.1 Headset Test Position - Body-Worn

#### Body-Worn Configuration

Body-worn operating configurations should be tested with the belt-clips and holsters attached to the device and positioned against a flat phantom in normal use configurations. Devices with a handset output should be tested with a handset connected to the device.

Body-worn accessories may not always be supplied or available as options for some devices that are intended to be authorized for body-worn use. A separation distance of 1.5 cm between the back of the device and a flat phantom is recommended for testing body-worn SAR compliance under such circumstances.

For this test :

The EUT is placed into the holster/belt clip and the holster is positioned against the surface of the phantom in a normal operating position.

Since this EUT doesn't supply any body-worn accessory to the end user, a distance of 2 mm was tested to confirm the necessary "minimum SAR separation distance".

(\* Note : This distance includes the 2 mm phantom shell thickness.)





### 8.3.2 Measurement Procedures

The evaluation was performed with the following procedures :

**Surface Check :** A surface check job gathers data used with optical surface detection. It determines the distance from the phantom surface where the reflection from the optical detector has its peak. Any following measurement jobs using optical surface detection will then rely on this value. The surface check performs its search a specified number of times, so that the repeatability can be verified. The probe tip distance is 1.3mm to phantom inner surface during scans.

**Reference :** The reference job measures the field at a specified reference position, at 4 mm from the selected section's grid reference point.

**Area Scan :** The area scan is used as a fast scan in two dimensions to find the area of high field values, before doing a finer measurement around the hot spot. The sophisticated interpolation routines can find the maximum locations even in relatively coarse grids. When an area scan has measured all reachable points, it computes the field maxima found in the scanned area, within a range of the global maximum. Any following zoom scan within the same procedure will then perform fine scans around these maxima. The area covered the entire dimension of the EUT and the horizontal grid spacing was 15 mm x 15 mm.

**Zoom Scan :** Zoom scans are used to assess the highest averaged SAR for cubic averaging volumes with 1 g and 10 g of simulated tissue. The zoom scan measures 5 x 5 x 7 points in a 32 x 32 x 30 mm cube whose base faces are centered around the maxima returned from a preceding area scan within the same procedure.

**Drift :** The drift job measures the field at the same location as the most recent reference job within the same procedure, with the same settings. The drift measurement gives the field difference in dB from the last reference measurement. Several drift measurements are possible for each reference measurement. This allows monitoring of the power drift of the device in the batch process. If the value changed by more than 5%, the evaluation was repeated.



## 8.4 Spatial Peak SAR Evaluation

The DASY4 software includes all numerical procedures necessary to evaluate the spatial peak SAR values. Based on the Draft: SCC-34, SC-2, WG-2 - Computational Dosimetry, IEEE P1529/D0.0 (Draft Recommended Practice for Determining the Spatial-Peak Specific Absorption Rate (SAR) Associated with the Use of Wireless Handsets - Computational Techniques), a new algorithm has been implemented. The spatial-peak SAR can be computed over any required mass.

The base for the evaluation is a "cube" measurement in a volume of  $(32 \times 32 \times 30) \text{mm}^3$  ( $5 \times 5 \times 7$  points). The measured volume must include the 1g and 10g cubes with the highest averaged SAR values. For that purpose, the center of the measured volume is aligned to the interpolated peak SAR value of a previously performed area scan. If the 10g cube or both cubes are not entirely inside the measured volumes, the system issues a warning regarding the evaluated spatial peak values within the Postprocessing engine (SEMCAD). This means that if the measured volume is shifted, higher values might be possible. To get the correct values you can use a finer measurement grid for the area scan. In complicated field distributions, a large grid spacing for the area scan might miss some details and give an incorrectly interpolated peak location.

The entire evaluation of the spatial peak values is performed within the Postprocessing engine (SEMCAD). The system always gives the maximum values for the 1g and 10g cubes. The algorithm to find the cube with highest averaged SAR is divided into three stages:

### Interpolation and Extrapolation

The probe is calibrated at the center of the dipole sensors which is located 1 to 2.7mm away from the probe tip. During measurements, the probe stops shortly above the phantom surface, depending on the probe and the surface detecting system. Both distances are included as parameters in the probe configuration file. The software always knows exactly how far away the measured point is from the surface. As the probe cannot directly measure at the surface, the values between the deepest measured point and the surface must be extrapolated.

In DASY4, the choice of the coordinate system defining the location of the measurement points has no influence on the uncertainty of the interpolation, Maxima Search and SAR extrapolation routines. The interpolation, Maxima Search and extrapolation routines are all based on the modified Quadratic Shepard's method [7].



## **9. Measurement Uncertainty**

Measurement uncertainties in SAR measurements are difficult to quantify due to several variables including biological, physiological, and environmental. However, we estimate the measurement uncertainties in SAR to be less than  $\pm 27\%$  [ 8 ] .

According to Std. C95.3 [ 9 ] , the overall uncertainties are difficult to assess and will vary with the type of meter and usage situation. However, accuracy's of  $\pm 1$  to 3 dB can be expected in practice, with greater uncertainties in near-field situations and at higher frequencies (shorter wavelengths), or areas where large reflecting objects are present. Under optimum measurement conditions, SAR measurement uncertainties of at least  $\pm 2$ dB can be expected.

According to CENELEC [ 10 ] , typical worst-case uncertainty of field measurements is  $\pm 5$  dB. For well-defined modulation characteristics the uncertainty can be reduced to  $\pm 3$  dB.



Source of Uncertainty	Uncertainty Value	Probability Distribution	Divisor	$C_i$	Standard Uncertainty $\pm 1\%(1-g)$	$V_i$ or $V_{eff}$
<b>Type-A</b>	0.9 %	Normal	1	1	0.9	9
<b>Measurement System</b>						
Probe Calibration	7 %	Normal	2	1	3.5	$\infty$
Axial Isotropy	0.2dB	Rectangular	$\sqrt{3}$	$\sqrt{0.5}$	1.9	$\infty$
Hemispherical Isotropy	9.6 %	Rectangular	$\sqrt{3}$	$\sqrt{0.5}$	3.9	$\infty$
Spatial Resolution	0 %	Rectangular	$\sqrt{3}$	1	0	$\infty$
Boundary Effect	11.0 %	Rectangular	$\sqrt{3}$	1	6.4	$\infty$
Linearity	0.2dB	Rectangular	$\sqrt{3}$	1	2.7	$\infty$
Detection Limit	1.0 %	Rectangular	$\sqrt{3}$	1	0.6	$\infty$
Readout Electronics	1.0 %	Normal	1	1	1.0	$\infty$
RF Ambient Conditions	3.0 %	Rectangular	$\sqrt{3}$	1	1.73	$\infty$
Probe Positioner Mech. Const.	0.4 %	Rectangular	$\sqrt{3}$	1	0.2	$\infty$
Probe Positioning	0.35 %	Rectangular	$\sqrt{3}$	1	0.2	$\infty$
Extrapolation and Integration	3.9 %	Rectangular	$\sqrt{3}$	1	2.3	$\infty$
<b>Test sample Related</b>						
Test sample Positioning	4.7 %	Normal	1	1	4.7	5
Device Holder Uncertainty	6.1 %	Normal	1	1	6.1	5
Drift of Output Power	5.0 %	Rectangular	$\sqrt{3}$	1	2.9	$\infty$
<b>Phantom and Setup</b>						
Phantom Uncertainty (Including temperature effects)	4.0%	Rectangular	$\sqrt{3}$	1	2.3	$\infty$
Liquid Conductivity (target)	5.0%	Rectangular	$\sqrt{3}$	0.6	1.7	$\infty$
Liquid Conductivity (meas.)	10.0%	Rectangular	$\sqrt{3}$	0.6	3.4	$\infty$
Liquid Permittivity (target)	5.0%	Rectangular	$\sqrt{3}$	0.6	1.7	$\infty$
Liquid Permittivity (meas.)	5.0%	Rectangular	$\sqrt{3}$	0.6	1.7	$\infty$
Combined standard uncertainty		RSS			13.5	88.7
Expanded uncertainty (Coverage factor = 2)		Normal (k=2)			27	

Table 6. Uncertainty Budget of DASY



## 10. SAR Test Results Summary

The test used Notebooks, listed in table.

No.	Trademark	Model
NB No.1	ASUS	A6000
NB No.2	DELL	PP20L
NB No.3	DELL	PP04X

### 10.1 Bluetooth Body SAR \_ EUT Bottom to phantom close body

**Ambient :**

Temperature (°C) : 22 ± 2      Relative HUMIDITY (%) : 40-70

**Liquid :**

Mixture Type : MSL2450      Liquid Temperature (°C) : 22.0  
 Depth of liquid (cm) : 15

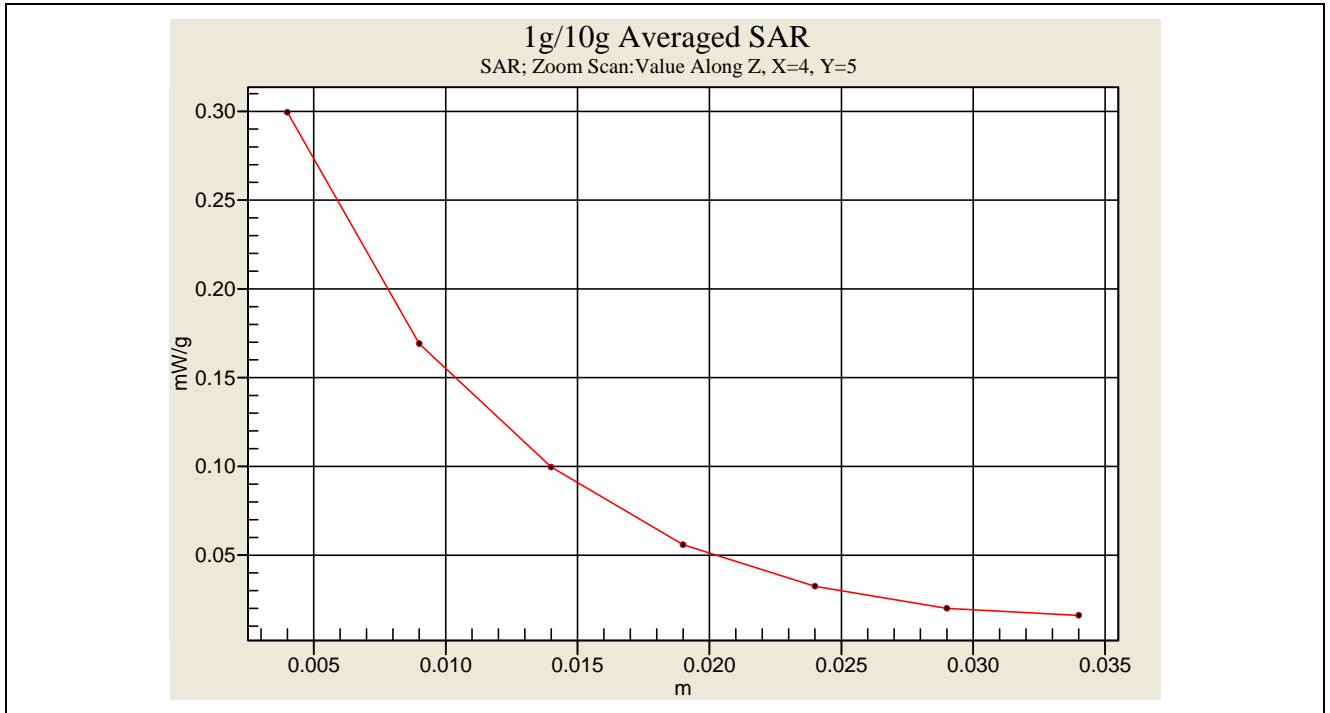
**Measurement :**

Crest Factor : 1      Probe S/N : 1530

Frequency		Battery	Phantom Position	Accessory	SAR <sub>1g</sub> [mW/g]	Power Drift (dB)	Temp.		Remark
MHz	CH						Amb.	Liq.	
2402	0	N/A	Flat	N/A	0.096	-0.014	21.5	22.0	NB1
2441	39	N/A	Flat	N/A	0.051	-0.172	21.5	22.0	NB1
2480	78	N/A	Flat	N/A	0.166	-0.084	21.5	22.0	NB1
2402	0	N/A	Flat	N/A	0.121	-0.019	21.5	22.0	NB2
2441	39	N/A	Flat	N/A	0.241	-0.007	21.5	22.0	NB2
2480	78	N/A	Flat	N/A	0.275	-0.071	21.5	22.0	NB2
2402	0	N/A	Flat	N/A	0.189	-0.011	21.5	22.0	NB3
2441	39	N/A	Flat	N/A	0.255	-0.027	21.5	22.0	NB3
2480	78	N/A	Flat	N/A	0.212	0.016	21.5	22.0	NB3
<b>Std. C95.1-1999 - Safety Limit            Spatial Peak            Uncontrolled Exposure/General Population</b>					<b>1.6 W/kg (mW/g)            Averaged over 1 gram</b>				



**Z-axis Plot of SAR Measurement**



**SAR Measurement \_ Flat NB2 Bluetooth CH78**



## 10.2 Bluetooth Body SAR \_ EUT Tip to phantom close body

**Ambient :**

Temperature (°C) : 22 ± 2      Relative HUMIDITY (%) : 40-70

**Liquid :**

Mixture Type : MSL2450      Liquid Temperature (°C) : 22.0  
 Depth of liquid (cm) : 15

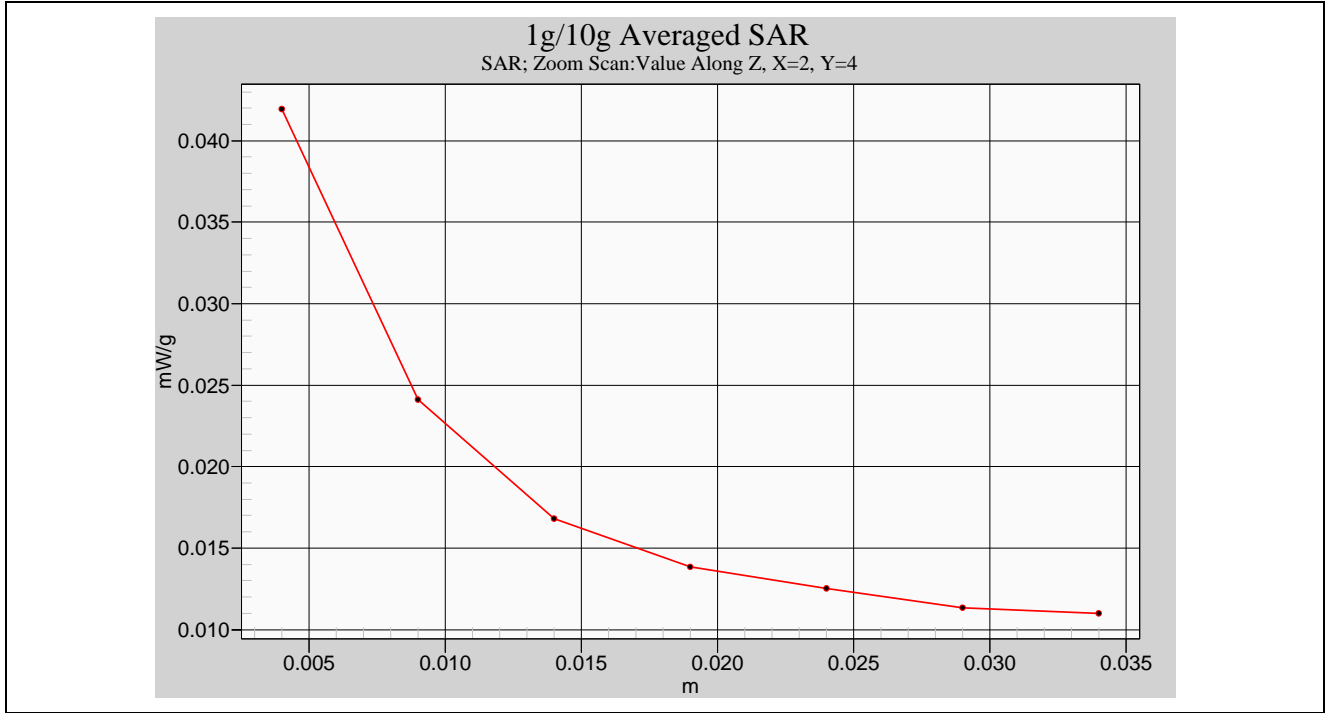
**Measurement :**

Crest Factor : 1      Probe S/N : 1530

Frequency		Battery	Phantom Position	Accessory	SAR <sub>1g</sub> [mW/g]	Power Drift (dB)	Temp.		Remark
MHz	CH						Amb.	Liq.	
2402	0	N/A	Flat	N/A	0.019	-0.037	21.5	22.0	NB1
2441	39	N/A	Flat	N/A	0.022	-0.047	21.5	22.0	NB1
2480	78	N/A	Flat	N/A	0.038	0.004	21.5	22.0	NB1
2402	0	N/A	Flat	N/A	0.019	-0.058	21.5	22.0	NB2
2441	39	N/A	Flat	N/A	0.023	-0.064	21.5	22.0	NB2
2480	78	N/A	Flat	N/A	0.040	0.044	21.5	22.0	NB2
2402	0	N/A	Flat	N/A	0.018	-0.175	21.5	22.0	NB3
2441	39	N/A	Flat	N/A	0.018	-0.183	21.5	22.0	NB3
2480	78	N/A	Flat	N/A	0.019	0.006	21.5	22.0	NB3
<b>Std. C95.1-1999 - Safety Limit            Spatial Peak            Uncontrolled Exposure/General Population</b>					<b>1.6 W/kg (mW/g)            Averaged over 1 gram</b>				



**Z-axis Plot of SAR Measurement**



**SAR Measurement \_ Flat NB2 Bluetooth CH78**



### 10.3 Test Setup Photo



Figure 11.Body SAR Test Setup \_ EUT Bottom to phantom close Body ( NB1 )



Figure 12.Body SAR Test Setup \_ EUT Bottom to phantom close Body ( NB2 )



Figure 13. Body SAR Test Setup \_ EUT Bottom to phantom close Body ( NB3 )



Figure 14. Body SAR Test Setup \_ EUT Tip to phantom close Body ( NB1 )



Figure 15. Body SAR Test Setup \_ EUT Tip to phantom close Body ( NB2 )



Figure 16. Body SAR Test Setup \_ EUT Tip to phantom close Body ( NB3 )



#### 10.4 Std. C95.1-1999 RF Exposure Limit

Human Exposure	Population Uncontrolled Exposure ( W/kg ) or (mW/g)	Occupational Controlled Exposure ( W/kg ) or (mW/g)
Spatial Peak SAR* (head)	1.60	8.00
Spatial Peak SAR** (Whole Body)	0.08	0.40
Spatial Peak SAR*** (Partial-Body)	1.60	8.00
Spatial Peak SAR**** (Hands / Feet / Ankle / Wrist )	4.00	20.00

**Table 7. Safety Limits for Partial Body Exposure**

**Notes :**

- \* The Spatial Peak value of the SAR averaged over any 1 gram of tissue. ( defined as a tissue volume in the shape of a cube ) and over the appropriate averaging time.
- \*\* The Spatial Average value of the SAR averaged over the whole - body.
- \*\*\* The Spatial Average value of the SAR averaged over the partial - body.
- \*\*\*\* The Spatial Peak value of the SAR averaged over any 10 grams of tissue. ( defined as a tissue volume in the shape of a cube ) and over the appropriate averaging time.

**Population / Uncontrolled Environments :** are defined as locations where there is the exposure of individuals who have no knowledge or control of their exposure.

**Occupational / Controlled Environments :** are defined as locations where there is exposure that may be incurred by persons who are aware of the potential for exposure, (i.e. as a result of employment or occupation).



## 11. Conclusion

The SAR test values found for the portable mobile phone **GN NETCOM A/S Trade Mark : Jabra Model (s) : A335W** are below the maximum recommended level of 1.6 W/kg ( mW/g ).



## 12. References

- [1] Std. C95.1-1999, "American National Standard safety levels with respect to human exposure to radio frequency electromagnetic fields, 300KHz to 100GHz", New York.
- [2] NCRP, National Council on Radiation Protection and Measurements, "Biological Effects and Exposure Criteria for Radio frequency Electromagnetic Fields", NCRP report NO. 86, 1986.
- [3] T. Schmid, O. Egger, and N. Kuster, "Automatic E-field scanning system for dosimetric assessments", IEEE Transactions on Microwave Theory and Techniques, vol. 44, pp, 105-113, Jan. 1996.
- [4] K. Poković, T. Schmid, and N. Kuster, "Robust setup for precise calibration of E-field probes in tissue simulating liquids at mobile communications frequency", in ICECOM'97, Dubrovnik, October 15-17, 1997, pp.120-124.
- [5] K. Poković, T. Schmid, and N. Kuster, "E-field probe with improved isotropy in brain simulating liquids", in Proceedings of the ELMAR, Zadar, Croatia, 23-25 June, 1996, pp.172-175.
- [6] N. Kuster, and Q. Balzano, "Energy absorption mechanism by biological bodies in the near field of dipole antennas above 300MHz", IEEE Transaction on Vehicular Technology, vol. 41, no. 1, Feb. 1992, pp. 17-23.
- [7] Robert J. Renka, "Multivariate Interpolation Of Large Sets Of Scattered Data", University of North Texas ACM Transactions on Mathematical Software, vol. 14, no. 2, June 1988 , pp. 139-148.
- [8] N. Kuster, R. Kastle, T. Schmid, *Dosimetric evaluation of mobile communications equipment with known precision*, IEEE Transaction on Communications, vol. E80-B, no. 5, May 1997, pp. 645-652.
- [9] Std. C95.3-1991, "IEEE Recommended Practice for the Measurement of Potentially Hazardous Electromagnetic Fields - RF and Microwave, New York: IEEE, Aug. 1992.
- [10] CENELEC CLC/SC111B, European Prestandard (prENV 50166-2), *Human Exposure to Electromagnetic Fields High-frequency. 10KHz-300GHz*, Jan. 1995.



***Appendix A - System Performance Check***

See following Attached Pages for System Performance Check.



Test Laboratory: A Test Lab Techno Corp. Date/Time: 3/18/2008 12:37:51 PM

### System Performance Check at 2450MHz\_20080318\_Body

**DUT: Dipole 2450 MHz; Type: D2450V2; Serial: D2450V2 - SN:712**

Communication System: CW; Frequency: 2450 MHz; Duty Cycle: 1:1

Medium parameters used:  $f = 2450$  MHz;  $\sigma = 1.97$  mho/m;  $\epsilon_r = 52.2$ ;  $\rho = 1000$  kg/m<sup>3</sup>

Phantom section: Flat Section

Measurement Standard: DASY4 (High Precision Assessment)

DASY4 Configuration:

- Probe: ET3DV6 - SN1530; ConvF(3.84, 3.84, 3.84); Calibrated: 9/26/2007
- Sensor-Surface: 4mm (Mechanical Surface Detection)
- Electronics: DAE3 Sn393; Calibrated: 8/29/2007
- Phantom: SAM 12; Type: SAM v4.0; Serial: TP:1009
- Measurement SW: DASY4, V4.7 Build 55; Postprocessing SW: SEMCAD, V1.8 Build 176

### System Performance Check at 2450MHz/Area Scan (71x71x1):

Measurement grid: dx=15mm, dy=15mm

Maximum value of SAR (interpolated) = 15.8 mW/g

### System Performance Check at 2450MHz/Zoom Scan (7x7x7)/Cube 0:

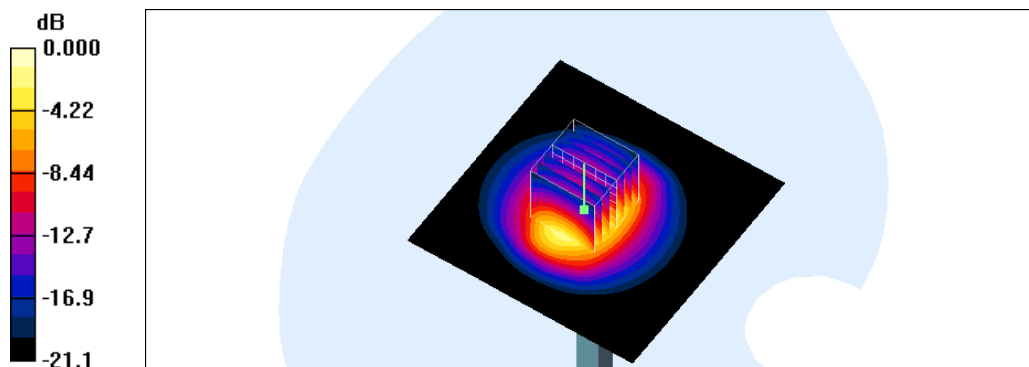
Measurement grid: dx=5mm, dy=5mm, dz=5mm

Reference Value = 90.7 V/m; Power Drift = -0.009 dB

Peak SAR (extrapolated) = 25.9 W/kg

**SAR(1 g) = 13.1 mW/g; SAR(10 g) = 6.35 mW/g**

Maximum value of SAR (measured) = 14.6 mW/g



0 dB = 14.6mW/g





***Appendix B - SAR Measurement Data***

See following Attached Pages for SAR Measurement Data.



Test Laboratory: A Test Lab Techno Corp. Date/Time: 3/18/2008 3:50:14 PM

### Flat\_Bluetooth CH0\_Bottom Close Body\_NB1

**DUT: A335W; Type: Bluetooth class 1 plug and play dongle ; FCC ID: BCE-A335W**

Communication System: Bluetooth; Frequency: 2402 MHz; Duty Cycle: 1:1

Medium parameters used:  $f = 2402$  MHz;  $\sigma = 1.91$  mho/m;  $\epsilon_r = 52.5$ ;  $\rho = 1000$  kg/m<sup>3</sup>

Phantom section: Flat Section

Measurement Standard: DASY4 (High Precision Assessment)

DASY4 Configuration:

- Probe: ET3DV6 - SN1530; ConvF(3.84, 3.84, 3.84); Calibrated: 9/26/2007
- Sensor-Surface: 4mm (Mechanical Surface Detection)
- Electronics: DAE3 Sn393; Calibrated: 8/29/2007
- Phantom: SAM 12; Type: SAM v4.0; Serial: TP:1009
- Measurement SW: DASY4, V4.7 Build 55; Postprocessing SW: SEMCAD, V1.8 Build 176

### Flat/Area Scan (91x101x1):

Measurement grid: dx=10mm, dy=10mm

Maximum value of SAR (interpolated) = 0.106 mW/g

### Flat/Zoom Scan (7x7x7)/Cube 0:

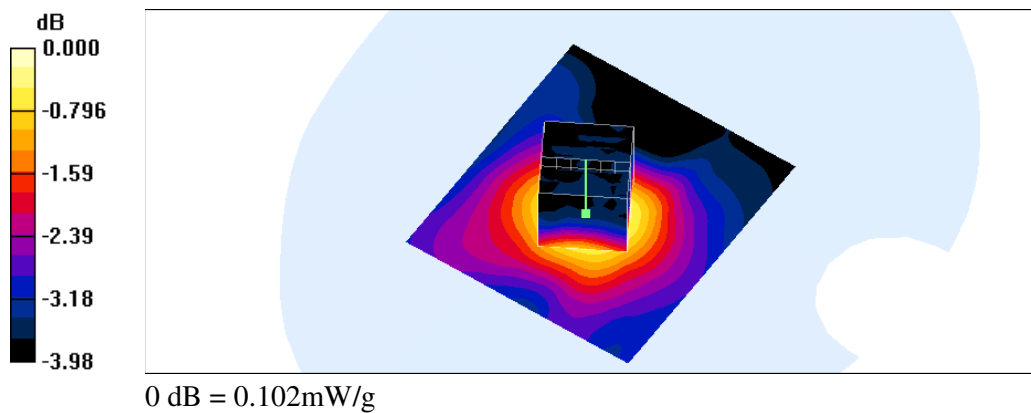
Measurement grid: dx=5mm, dy=5mm, dz=5mm

Reference Value = 5.93 V/m; Power Drift = -0.014 dB

Peak SAR (extrapolated) = 0.130 W/kg

**SAR(1 g) = 0.096 mW/g; SAR(10 g) = 0.072 mW/g**

Maximum value of SAR (measured) = 0.102 mW/g





Test Laboratory: A Test Lab Techno Corp. Date/Time: 3/18/2008 3:22:58 PM

### **Flat\_Bluetooth CH39\_Bottom Close Body\_NB1**

**DUT: A335W; Type: Bluetooth class 1 plug and play dongle ; FCC ID: BCE-A335W**

Communication System: Bluetooth; Frequency: 2441 MHz; Duty Cycle: 1:1

Medium parameters used:  $f = 2441$  MHz;  $\sigma = 1.96$  mho/m;  $\epsilon_r = 52.2$ ;  $\rho = 1000$  kg/m<sup>3</sup>

Phantom section: Flat Section

Measurement Standard: DASY4 (High Precision Assessment)

DASY4 Configuration:

- Probe: ET3DV6 - SN1530; ConvF(3.84, 3.84, 3.84); Calibrated: 9/26/2007
- Sensor-Surface: 4mm (Mechanical Surface Detection)
- Electronics: DAE3 Sn393; Calibrated: 8/29/2007
- Phantom: SAM 12; Type: SAM v4.0; Serial: TP:1009
- Measurement SW: DASY4, V4.7 Build 55; Postprocessing SW: SEMCAD, V1.8 Build 176

### **Flat/Area Scan (91x101x1):**

Measurement grid: dx=10mm, dy=10mm

Maximum value of SAR (interpolated) = 0.055 mW/g

### **Flat/Zoom Scan (7x7x7)/Cube 0:**

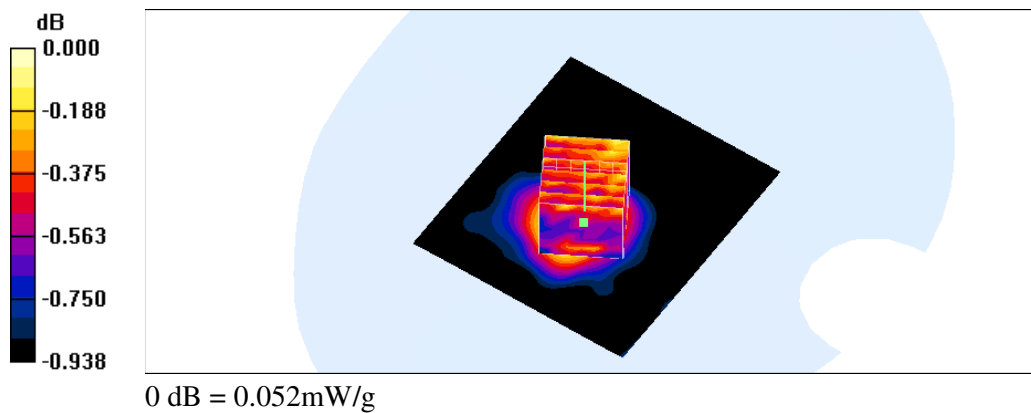
Measurement grid: dx=5mm, dy=5mm, dz=5mm

Reference Value = 5.45 V/m; Power Drift = -0.172 dB

Peak SAR (extrapolated) = 0.052 W/kg

**SAR(1 g) = 0.051 mW/g; SAR(10 g) = 0.048 mW/g**

Maximum value of SAR (measured) = 0.052 mW/g





Test Laboratory: A Test Lab Techno Corp. Date/Time: 3/18/2008 4:15:00 PM

### Flat\_Bluetooth CH78\_Bottom Close Body\_NB1

**DUT: A335W; Type: Bluetooth class 1 plug and play dongle ; FCC ID: BCE-A335W**

Communication System: Bluetooth; Frequency: 2480 MHz; Duty Cycle: 1:1

Medium parameters used:  $f = 2480$  MHz;  $\sigma = 2.02$  mho/m;  $\epsilon_r = 52.2$ ;  $\rho = 1000$  kg/m<sup>3</sup>

Phantom section: Flat Section

Measurement Standard: DASY4 (High Precision Assessment)

DASY4 Configuration:

- Probe: ET3DV6 - SN1530; ConvF(3.84, 3.84, 3.84); Calibrated: 9/26/2007
- Sensor-Surface: 4mm (Mechanical Surface Detection)
- Electronics: DAE3 Sn393; Calibrated: 8/29/2007
- Phantom: SAM 12; Type: SAM v4.0; Serial: TP:1009
- Measurement SW: DASY4, V4.7 Build 55; Postprocessing SW: SEMCAD, V1.8 Build 176

### Flat/Area Scan (91x101x1):

Measurement grid: dx=10mm, dy=10mm

Maximum value of SAR (interpolated) = 0.192 mW/g

### Flat/Zoom Scan (7x7x7)/Cube 0:

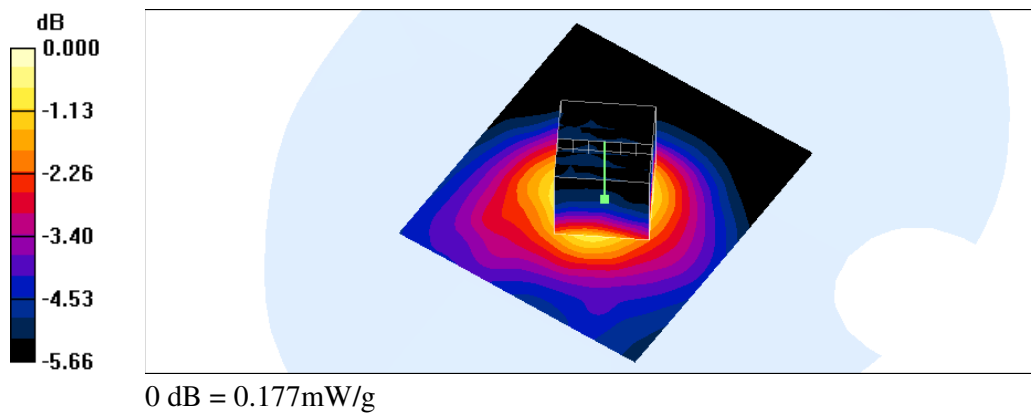
Measurement grid: dx=5mm, dy=5mm, dz=5mm

Reference Value = 6.50 V/m; Power Drift = -0.084 dB

Peak SAR (extrapolated) = 0.252 W/kg

**SAR(1 g) = 0.166 mW/g; SAR(10 g) = 0.112 mW/g**

Maximum value of SAR (measured) = 0.177 mW/g





Test Laboratory: A Test Lab Techno Corp. Date/Time: 3/18/2008 6:02:00 PM

## Flat\_Bluetooth CH0\_Bottom Close Body\_NB2

**DUT: A335W; Type: Bluetooth class 1 plug and play dongle ; FCC ID: BCE-A335W**

Communication System: Bluetooth; Frequency: 2402 MHz; Duty Cycle: 1:1

Medium parameters used:  $f = 2402$  MHz;  $\sigma = 1.91$  mho/m;  $\epsilon_r = 52.5$ ;  $\rho = 1000$  kg/m<sup>3</sup>

Phantom section: Flat Section

Measurement Standard: DASY4 (High Precision Assessment)

DASY4 Configuration:

- Probe: ET3DV6 - SN1530; ConvF(3.84, 3.84, 3.84); Calibrated: 9/26/2007
- Sensor-Surface: 4mm (Mechanical Surface Detection)
- Electronics: DAE3 Sn393; Calibrated: 8/29/2007
- Phantom: SAM 12; Type: SAM v4.0; Serial: TP:1009
- Measurement SW: DASY4, V4.7 Build 55; Postprocessing SW: SEMCAD, V1.8 Build 176

### Flat/Area Scan (91x101x1):

Measurement grid: dx=10mm, dy=10mm

Maximum value of SAR (interpolated) = 0.133 mW/g

### Flat/Zoom Scan (7x7x7)/Cube 0:

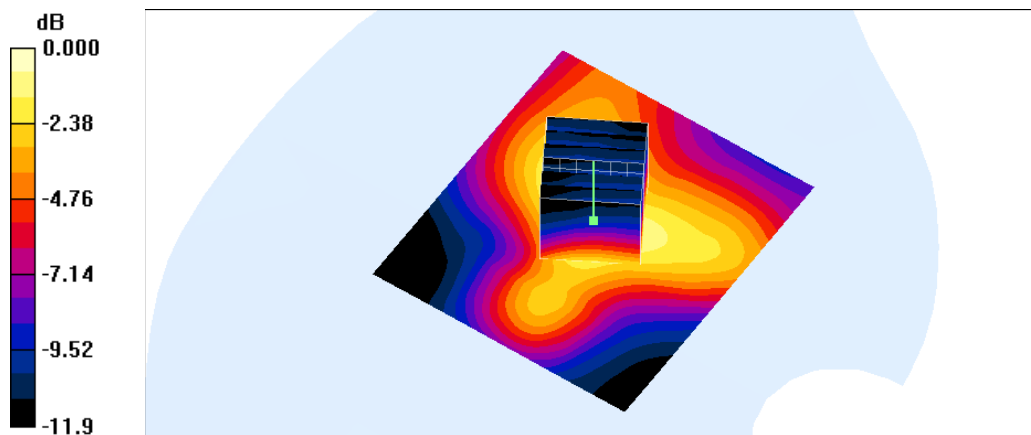
Measurement grid: dx=5mm, dy=5mm, dz=5mm

Reference Value = 6.44 V/m; Power Drift = -0.019 dB

Peak SAR (extrapolated) = 0.228 W/kg

**SAR(1 g) = 0.121 mW/g; SAR(10 g) = 0.070 mW/g**

Maximum value of SAR (measured) = 0.132 mW/g





Test Laboratory: A Test Lab Techno Corp. Date/Time: 3/18/2008 6:30:32 PM

### Flat\_Bluetooth CH39\_Bottom Close Body\_NB2

**DUT: A335W; Type: Bluetooth class 1 plug and play dongle ; FCC ID: BCE-A335W**

Communication System: Bluetooth; Frequency: 2441 MHz; Duty Cycle: 1:1

Medium parameters used:  $f = 2441$  MHz;  $\sigma = 1.96$  mho/m;  $\epsilon_r = 52.2$ ;  $\rho = 1000$  kg/m<sup>3</sup>

Phantom section: Flat Section

Measurement Standard: DASY4 (High Precision Assessment)

DASY4 Configuration:

- Probe: ET3DV6 - SN1530; ConvF(3.84, 3.84, 3.84); Calibrated: 9/26/2007
- Sensor-Surface: 4mm (Mechanical Surface Detection)
- Electronics: DAE3 Sn393; Calibrated: 8/29/2007
- Phantom: SAM 12; Type: SAM v4.0; Serial: TP:1009
- Measurement SW: DASY4, V4.7 Build 55; Postprocessing SW: SEMCAD, V1.8 Build 176

### Flat/Area Scan (91x101x1):

Measurement grid: dx=10mm, dy=10mm

Maximum value of SAR (interpolated) = 0.268 mW/g

### Flat/Zoom Scan (7x7x7)/Cube 0:

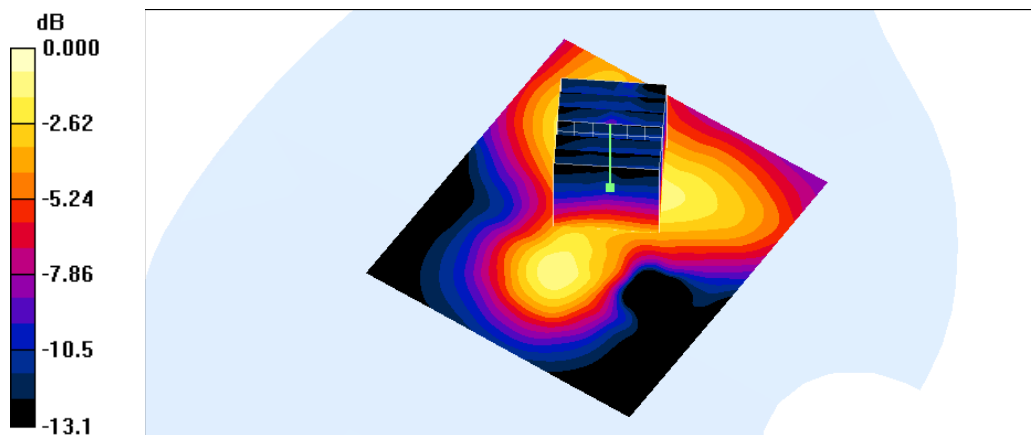
Measurement grid: dx=5mm, dy=5mm, dz=5mm

Reference Value = 11.4 V/m; Power Drift = -0.007 dB

Peak SAR (extrapolated) = 0.511 W/kg

**SAR(1 g) = 0.241 mW/g; SAR(10 g) = 0.134 mW/g**

Maximum value of SAR (measured) = 0.268 mW/g





Test Laboratory: A Test Lab Techno Corp. Date/Time: 3/18/2008 7:01:45 PM

## Flat\_Bluetooth CH78\_Bottom Close Body\_NB2

**DUT: A335W; Type: Bluetooth class 1 plug and play dongle ; FCC ID: BCE-A335W**

Communication System: Bluetooth; Frequency: 2480 MHz; Duty Cycle: 1:1

Medium parameters used:  $f = 2480 \text{ MHz}$ ;  $\sigma = 2.02 \text{ mho/m}$ ;  $\epsilon_r = 52.2$ ;  $\rho = 1000 \text{ kg/m}^3$

Phantom section: Flat Section

Measurement Standard: DASY4 (High Precision Assessment)

DASY4 Configuration:

- Probe: ET3DV6 - SN1530; ConvF(3.84, 3.84, 3.84); Calibrated: 9/26/2007
- Sensor-Surface: 4mm (Mechanical Surface Detection)
- Electronics: DAE3 Sn393; Calibrated: 8/29/2007
- Phantom: SAM 12; Type: SAM v4.0; Serial: TP:1009
- Measurement SW: DASY4, V4.7 Build 55; Postprocessing SW: SEMCAD, V1.8 Build 176

### Flat/Area Scan (91x101x1):

Measurement grid:  $dx=10\text{mm}$ ,  $dy=10\text{mm}$

Maximum value of SAR (interpolated) = 0.282 mW/g

### Flat/Zoom Scan (7x7x7)/Cube 0:

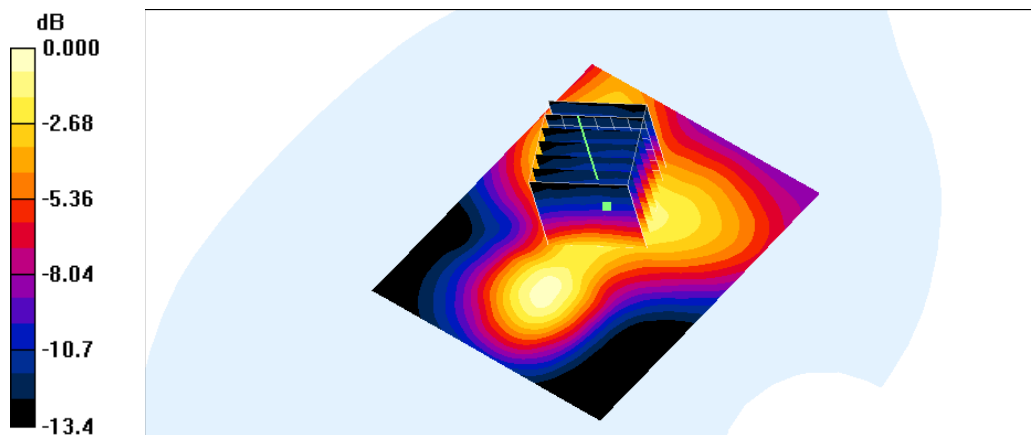
Measurement grid:  $dx=5\text{mm}$ ,  $dy=5\text{mm}$ ,  $dz=5\text{mm}$

Reference Value = 12.8 V/m; Power Drift = -0.071 dB

Peak SAR (extrapolated) = 0.519 W/kg

**SAR(1 g) = 0.275 mW/g; SAR(10 g) = 0.154 mW/g**

Maximum value of SAR (measured) = 0.299 mW/g



0 dB = 0.299mW/g



Test Laboratory: A Test Lab Techno Corp. Date/Time: 3/18/2008 9:30:06 PM

### Flat\_Bluetooth CH0\_Bottom Close Body\_NB3

**DUT: A335W; Type: Bluetooth class 1 plug and play dongle ; FCC ID: BCE-A335W**

Communication System: Bluetooth; Frequency: 2402 MHz; Duty Cycle: 1:1

Medium parameters used:  $f = 2402$  MHz;  $\sigma = 1.91$  mho/m;  $\epsilon_r = 52.5$ ;  $\rho = 1000$  kg/m<sup>3</sup>

Phantom section: Flat Section

Measurement Standard: DASY4 (High Precision Assessment)

DASY4 Configuration:

- Probe: ET3DV6 - SN1530; ConvF(3.84, 3.84, 3.84); Calibrated: 9/26/2007
- Sensor-Surface: 4mm (Mechanical Surface Detection)
- Electronics: DAE3 Sn393; Calibrated: 8/29/2007
- Phantom: SAM 12; Type: SAM v4.0; Serial: TP:1009
- Measurement SW: DASY4, V4.7 Build 55; Postprocessing SW: SEMCAD, V1.8 Build 176

### Flat/Area Scan (91x101x1):

Measurement grid: dx=10mm, dy=10mm

Maximum value of SAR (interpolated) = 0.199 mW/g

### Flat/Zoom Scan (7x7x7)/Cube 0:

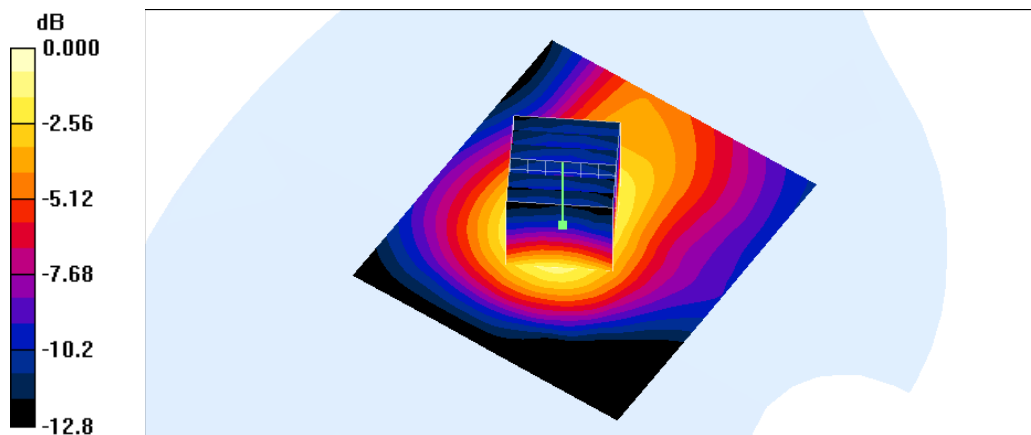
Measurement grid: dx=5mm, dy=5mm, dz=5mm

Reference Value = 8.48 V/m; Power Drift = -0.011 dB

Peak SAR (extrapolated) = 0.340 W/kg

**SAR(1 g) = 0.189 mW/g; SAR(10 g) = 0.112 mW/g**

Maximum value of SAR (measured) = 0.201 mW/g



0 dB = 0.201mW/g





Test Laboratory: A Test Lab Techno Corp. Date/Time: 3/18/2008 10:01:36 PM

### Flat\_Bluetooth CH39\_Bottom Close Body\_NB3

**DUT: A335W; Type: Bluetooth class 1 plug and play dongle ; FCC ID: BCE-A335W**

Communication System: Bluetooth; Frequency: 2441 MHz; Duty Cycle: 1:1

Medium parameters used:  $f = 2441$  MHz;  $\sigma = 1.96$  mho/m;  $\epsilon_r = 52.2$ ;  $\rho = 1000$  kg/m<sup>3</sup>

Phantom section: Flat Section

Measurement Standard: DASY4 (High Precision Assessment)

DASY4 Configuration:

- Probe: ET3DV6 - SN1530; ConvF(3.84, 3.84, 3.84); Calibrated: 9/26/2007
- Sensor-Surface: 4mm (Mechanical Surface Detection)
- Electronics: DAE3 Sn393; Calibrated: 8/29/2007
- Phantom: SAM 12; Type: SAM v4.0; Serial: TP:1009
- Measurement SW: DASY4, V4.7 Build 55; Postprocessing SW: SEMCAD, V1.8 Build 176

### Flat/Area Scan (91x101x1):

Measurement grid: dx=10mm, dy=10mm

Maximum value of SAR (interpolated) = 0.279 mW/g

### Flat/Zoom Scan (7x7x7)/Cube 0:

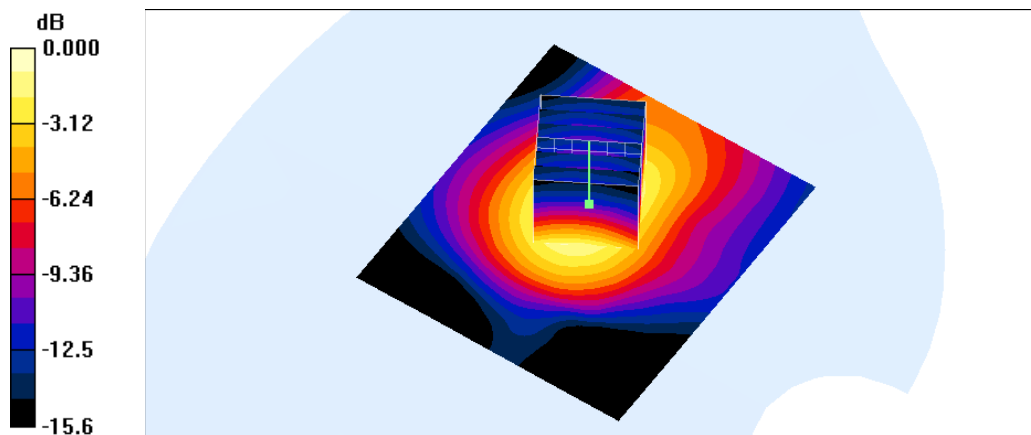
Measurement grid: dx=5mm, dy=5mm, dz=5mm

Reference Value = 6.97 V/m; Power Drift = -0.027 dB

Peak SAR (extrapolated) = 0.449 W/kg

**SAR(1 g) = 0.255 mW/g; SAR(10 g) = 0.147 mW/g**

Maximum value of SAR (measured) = 0.276 mW/g





Test Laboratory: A Test Lab Techno Corp. Date/Time: 3/18/2008 10:33:23 PM

### Flat\_Bluetooth CH78\_Bottom Close Body\_NB3

**DUT: A335W; Type: Bluetooth class 1 plug and play dongle ; FCC ID: BCE-A335W**

Communication System: Bluetooth; Frequency: 2480 MHz; Duty Cycle: 1:1

Medium parameters used:  $f = 2480 \text{ MHz}$ ;  $\sigma = 2.02 \text{ mho/m}$ ;  $\epsilon_r = 52.2$ ;  $\rho = 1000 \text{ kg/m}^3$

Phantom section: Flat Section

Measurement Standard: DASY4 (High Precision Assessment)

DASY4 Configuration:

- Probe: ET3DV6 - SN1530; ConvF(3.84, 3.84, 3.84); Calibrated: 9/26/2007
- Sensor-Surface: 4mm (Mechanical Surface Detection)
- Electronics: DAE3 Sn393; Calibrated: 8/29/2007
- Phantom: SAM 12; Type: SAM v4.0; Serial: TP:1009
- Measurement SW: DASY4, V4.7 Build 55; Postprocessing SW: SEMCAD, V1.8 Build 176

### Flat/Area Scan (91x101x1):

Measurement grid:  $dx=10\text{mm}$ ,  $dy=10\text{mm}$

Maximum value of SAR (interpolated) = 0.220 mW/g

### Flat/Zoom Scan (7x7x7)/Cube 0:

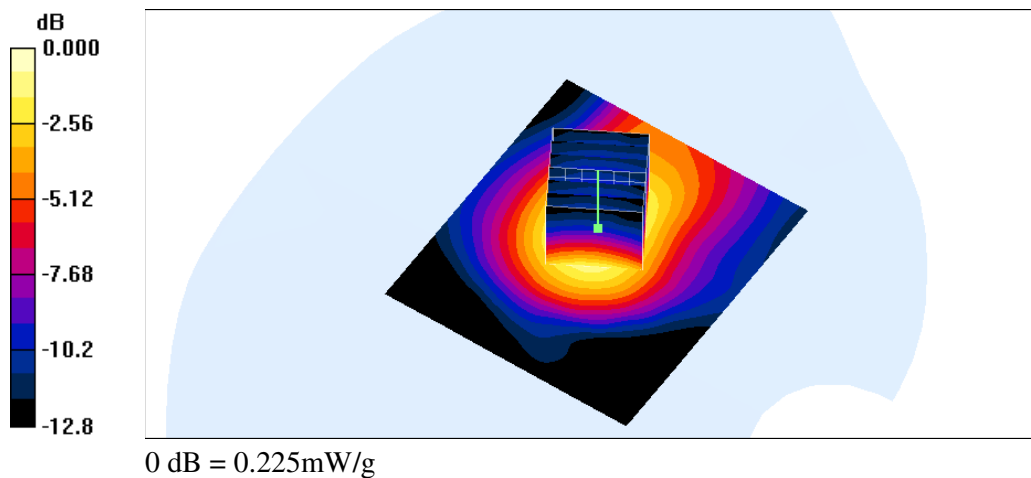
Measurement grid:  $dx=5\text{mm}$ ,  $dy=5\text{mm}$ ,  $dz=5\text{mm}$

Reference Value = 6.35 V/m; Power Drift = 0.016 dB

Peak SAR (extrapolated) = 0.382 W/kg

**SAR(1 g) = 0.212 mW/g; SAR(10 g) = 0.124 mW/g**

Maximum value of SAR (measured) = 0.225 mW/g





Test Laboratory: A Test Lab Techno Corp. Date/Time: 3/18/2008 4:40:52 PM

### Flat\_Bluetooth CH0\_Tip Close Body\_NB1

**DUT: A335W; Type: Bluetooth class 1 plug and play dongle ; FCC ID: BCE-A335W**

Communication System: Bluetooth; Frequency: 2402 MHz; Duty Cycle: 1:1

Medium parameters used:  $f = 2402$  MHz;  $\sigma = 1.91$  mho/m;  $\epsilon_r = 52.5$ ;  $\rho = 1000$  kg/m<sup>3</sup>

Phantom section: Flat Section

Measurement Standard: DASY4 (High Precision Assessment)

DASY4 Configuration:

- Probe: ET3DV6 - SN1530; ConvF(3.84, 3.84, 3.84); Calibrated: 9/26/2007
- Sensor-Surface: 4mm (Mechanical Surface Detection)
- Electronics: DAE3 Sn393; Calibrated: 8/29/2007
- Phantom: SAM 12; Type: SAM v4.0; Serial: TP:1009
- Measurement SW: DASY4, V4.7 Build 55; Postprocessing SW: SEMCAD, V1.8 Build 176

### Flat/Area Scan (71x101x1):

Measurement grid: dx=10mm, dy=10mm

Maximum value of SAR (interpolated) = 0.021 mW/g

### Flat/Zoom Scan (7x7x7)/Cube 0:

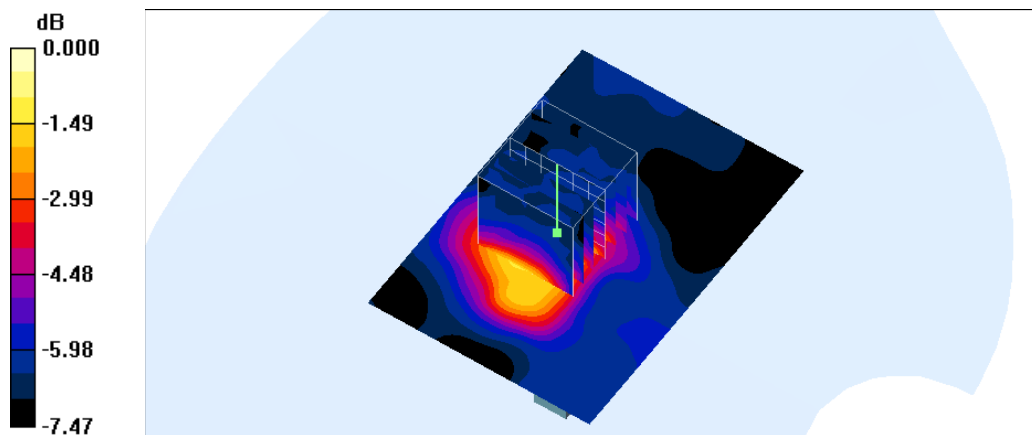
Measurement grid: dx=5mm, dy=5mm, dz=5mm

Reference Value = 2.48 V/m; Power Drift = -0.037 dB

Peak SAR (extrapolated) = 0.043 W/kg

**SAR(1 g) = 0.019 mW/g; SAR(10 g) = 0.011 mW/g**

Maximum value of SAR (measured) = 0.020 mW/g



0 dB = 0.020mW/g



Test Laboratory: A Test Lab Techno Corp. Date/Time: 3/18/2008 5:08:21 PM

## Flat\_Bluetooth CH39\_Tip Close Body\_NB1

**DUT: A335W; Type: Bluetooth class 1 plug and play dongle ; FCC ID: BCE-A335W**

Communication System: Bluetooth; Frequency: 2441 MHz; Duty Cycle: 1:1

Medium parameters used:  $f = 2441$  MHz;  $\sigma = 1.96$  mho/m;  $\epsilon_r = 52.2$ ;  $\rho = 1000$  kg/m<sup>3</sup>

Phantom section: Flat Section

Measurement Standard: DASY4 (High Precision Assessment)

DASY4 Configuration:

- Probe: ET3DV6 - SN1530; ConvF(3.84, 3.84, 3.84); Calibrated: 9/26/2007
- Sensor-Surface: 4mm (Mechanical Surface Detection)
- Electronics: DAE3 Sn393; Calibrated: 8/29/2007
- Phantom: SAM 12; Type: SAM v4.0; Serial: TP:1009
- Measurement SW: DASY4, V4.7 Build 55; Postprocessing SW: SEMCAD, V1.8 Build 176

### Flat/Area Scan (71x101x1):

Measurement grid: dx=10mm, dy=10mm

Maximum value of SAR (interpolated) = 0.025 mW/g

### Flat/Zoom Scan (7x7x7)/Cube 0:

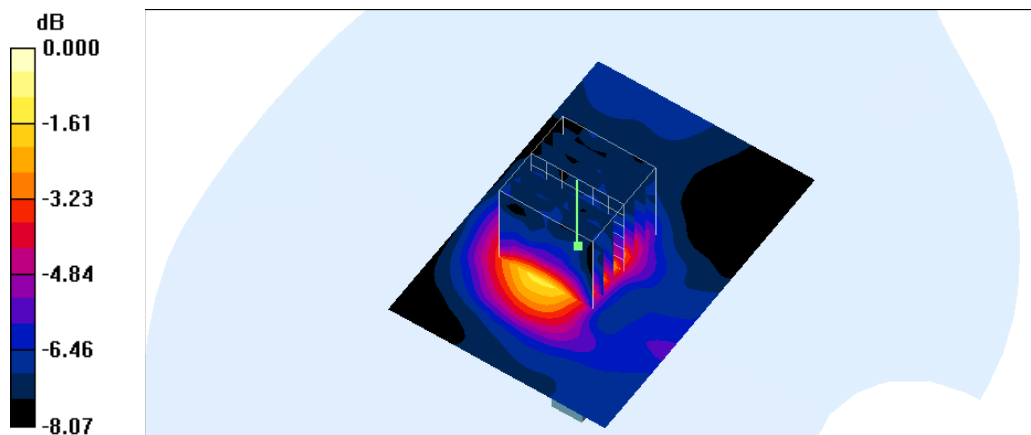
Measurement grid: dx=5mm, dy=5mm, dz=5mm

Reference Value = 2.96 V/m; Power Drift = -0.047 dB

Peak SAR (extrapolated) = 0.044 W/kg

**SAR(1 g) = 0.022 mW/g; SAR(10 g) = 0.012 mW/g**

Maximum value of SAR (measured) = 0.024 mW/g



0 dB = 0.024mW/g



Test Laboratory: A Test Lab Techno Corp. Date/Time: 3/18/2008 5:33:01 PM

### Flat\_Bluetooth CH78\_Tip Close Body\_NB1

**DUT: A335W; Type: Bluetooth class 1 plug and play dongle ; FCC ID: BCE-A335W**

Communication System: Bluetooth; Frequency: 2480 MHz; Duty Cycle: 1:1

Medium parameters used:  $f = 2480$  MHz;  $\sigma = 2.02$  mho/m;  $\epsilon_r = 52.2$ ;  $\rho = 1000$  kg/m<sup>3</sup>

Phantom section: Flat Section

Measurement Standard: DASY4 (High Precision Assessment)

DASY4 Configuration:

- Probe: ET3DV6 - SN1530; ConvF(3.84, 3.84, 3.84); Calibrated: 9/26/2007
- Sensor-Surface: 4mm (Mechanical Surface Detection)
- Electronics: DAE3 Sn393; Calibrated: 8/29/2007
- Phantom: SAM 12; Type: SAM v4.0; Serial: TP:1009
- Measurement SW: DASY4, V4.7 Build 55; Postprocessing SW: SEMCAD, V1.8 Build 176

### Flat/Area Scan (71x101x1):

Measurement grid: dx=10mm, dy=10mm

Maximum value of SAR (interpolated) = 0.041 mW/g

### Flat/Zoom Scan (7x7x7)/Cube 0:

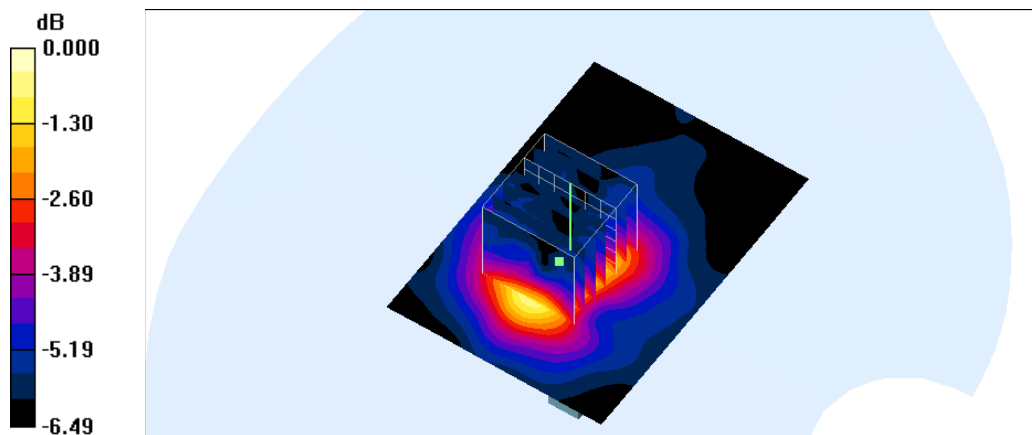
Measurement grid: dx=5mm, dy=5mm, dz=5mm

Reference Value = 4.18 V/m; Power Drift = 0.004 dB

Peak SAR (extrapolated) = 0.085 W/kg

**SAR(1 g) = 0.038 mW/g; SAR(10 g) = 0.023 mW/g**

Maximum value of SAR (measured) = 0.040 mW/g





Test Laboratory: A Test Lab Techno Corp. Date/Time: 3/18/2008 7:32:52 PM

## Flat\_Bluetooth CH0\_Tip Close Body\_NB2

**DUT: A335W; Type: Bluetooth class 1 plug and play dongle ; FCC ID: BCE-A335W**

Communication System: Bluetooth; Frequency: 2402 MHz; Duty Cycle: 1:1

Medium parameters used:  $f = 2402$  MHz;  $\sigma = 1.91$  mho/m;  $\epsilon_r = 52.5$ ;  $\rho = 1000$  kg/m<sup>3</sup>

Phantom section: Flat Section

Measurement Standard: DASY4 (High Precision Assessment)

DASY4 Configuration:

- Probe: ET3DV6 - SN1530; ConvF(3.84, 3.84, 3.84); Calibrated: 9/26/2007
- Sensor-Surface: 4mm (Mechanical Surface Detection)
- Electronics: DAE3 Sn393; Calibrated: 8/29/2007
- Phantom: SAM 12; Type: SAM v4.0; Serial: TP:1009
- Measurement SW: DASY4, V4.7 Build 55; Postprocessing SW: SEMCAD, V1.8 Build 176

### Flat/Area Scan (81x121x1):

Measurement grid: dx=10mm, dy=10mm

Maximum value of SAR (interpolated) = 0.021 mW/g

### Flat/Zoom Scan (7x7x7)/Cube 0:

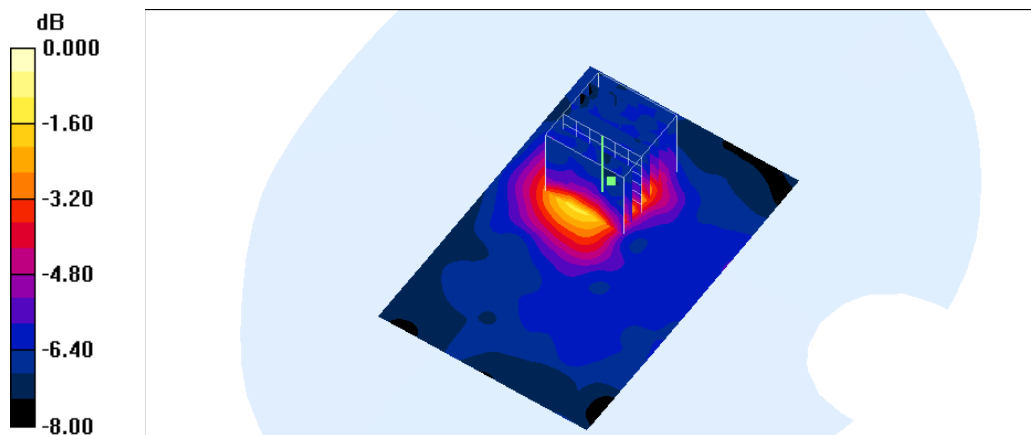
Measurement grid: dx=5mm, dy=5mm, dz=5mm

Reference Value = 2.83 V/m; Power Drift = -0.058 dB

Peak SAR (extrapolated) = 0.041 W/kg

**SAR(1 g) = 0.019 mW/g; SAR(10 g) = 0.011 mW/g**

Maximum value of SAR (measured) = 0.020 mW/g





Test Laboratory: A Test Lab Techno Corp. Date/Time: 3/18/2008 8:03:18 PM

### Flat\_Bluetooth CH39\_Tip Close Body\_NB2

**DUT: A335W; Type: Bluetooth class 1 plug and play dongle ; FCC ID: BCE-A335W**

Communication System: Bluetooth; Frequency: 2441 MHz; Duty Cycle: 1:1

Medium parameters used:  $f = 2441$  MHz;  $\sigma = 1.96$  mho/m;  $\epsilon_r = 52.2$ ;  $\rho = 1000$  kg/m<sup>3</sup>

Phantom section: Flat Section

Measurement Standard: DASY4 (High Precision Assessment)

DASY4 Configuration:

- Probe: ET3DV6 - SN1530; ConvF(3.84, 3.84, 3.84); Calibrated: 9/26/2007
- Sensor-Surface: 4mm (Mechanical Surface Detection)
- Electronics: DAE3 Sn393; Calibrated: 8/29/2007
- Phantom: SAM 12; Type: SAM v4.0; Serial: TP:1009
- Measurement SW: DASY4, V4.7 Build 55; Postprocessing SW: SEMCAD, V1.8 Build 176

### Flat/Area Scan (71x101x1):

Measurement grid: dx=10mm, dy=10mm

Maximum value of SAR (interpolated) = 0.025 mW/g

### Flat/Zoom Scan (7x7x7)/Cube 0:

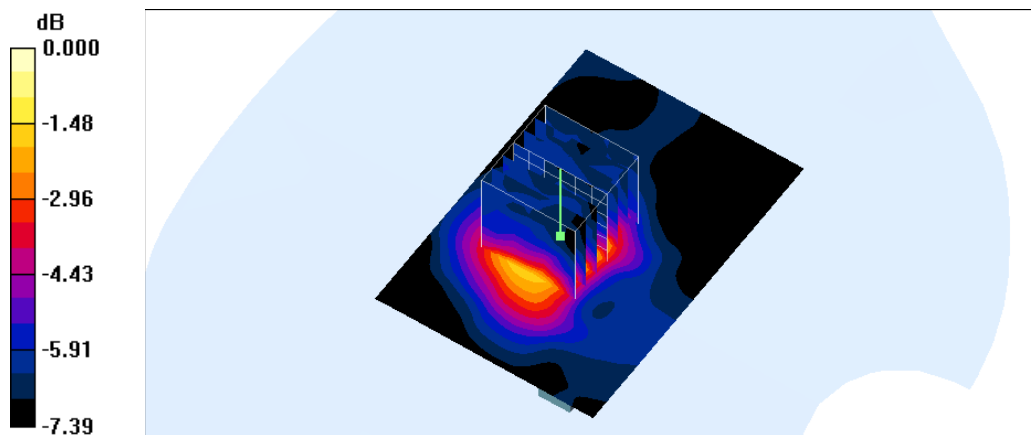
Measurement grid: dx=5mm, dy=5mm, dz=5mm

Reference Value = 3.05 V/m; Power Drift = -0.064 dB

Peak SAR (extrapolated) = 0.051 W/kg

**SAR(1 g) = 0.023 mW/g; SAR(10 g) = 0.013 mW/g**

Maximum value of SAR (measured) = 0.025 mW/g



0 dB = 0.025mW/g



Test Laboratory: A Test Lab Techno Corp. Date/Time: 3/18/2008 8:35:47 PM

### Flat\_Bluetooth CH78\_Tip Close Body\_NB2

**DUT: A335W; Type: Bluetooth class 1 plug and play dongle ; FCC ID: BCE-A335W**

Communication System: Bluetooth; Frequency: 2480 MHz; Duty Cycle: 1:1

Medium parameters used:  $f = 2480 \text{ MHz}$ ;  $\sigma = 2.02 \text{ mho/m}$ ;  $\epsilon_r = 52.2$ ;  $\rho = 1000 \text{ kg/m}^3$

Phantom section: Flat Section

Measurement Standard: DASY4 (High Precision Assessment)

DASY4 Configuration:

- Probe: ET3DV6 - SN1530; ConvF(3.84, 3.84, 3.84); Calibrated: 9/26/2007
- Sensor-Surface: 4mm (Mechanical Surface Detection)
- Electronics: DAE3 Sn393; Calibrated: 8/29/2007
- Phantom: SAM 12; Type: SAM v4.0; Serial: TP:1009
- Measurement SW: DASY4, V4.7 Build 55; Postprocessing SW: SEMCAD, V1.8 Build 176

### Flat/Area Scan (71x101x1):

Measurement grid:  $dx=10\text{mm}$ ,  $dy=10\text{mm}$

Maximum value of SAR (interpolated) = 0.043 mW/g

### Flat/Zoom Scan (7x7x7)/Cube 0:

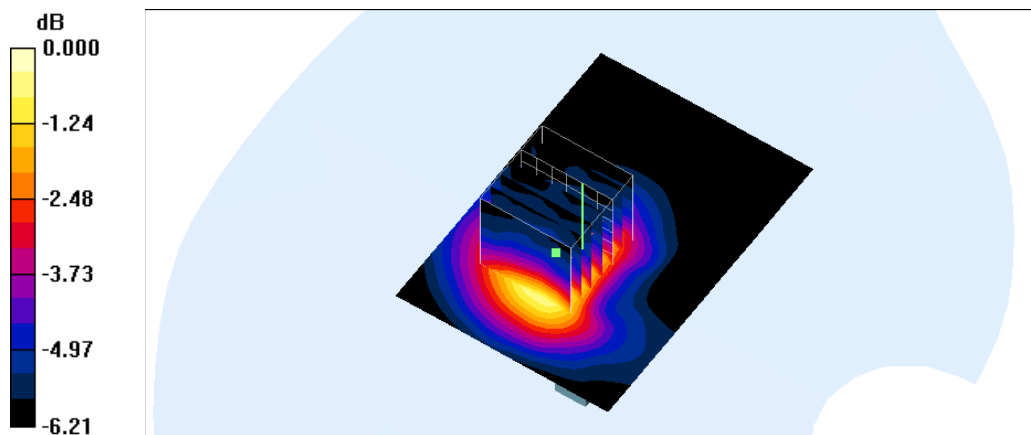
Measurement grid:  $dx=5\text{mm}$ ,  $dy=5\text{mm}$ ,  $dz=5\text{mm}$

Reference Value = 4.03 V/m; Power Drift = 0.044 dB

Peak SAR (extrapolated) = 0.082 W/kg

**SAR(1 g) = 0.040 mW/g; SAR(10 g) = 0.026 mW/g**

Maximum value of SAR (measured) = 0.042 mW/g







Test Laboratory: A Test Lab Techno Corp. Date/Time: 3/18/2008 11:02:00 PM

### Flat\_Bluetooth CH0\_Tip Close Body\_NB3

**DUT: A335W; Type: Bluetooth class 1 plug and play dongle ; FCC ID: BCE-A335W**

Communication System: Bluetooth; Frequency: 2402 MHz; Duty Cycle: 1:1

Medium parameters used:  $f = 2402$  MHz;  $\sigma = 1.91$  mho/m;  $\epsilon_r = 52.5$ ;  $\rho = 1000$  kg/m<sup>3</sup>

Phantom section: Flat Section

Measurement Standard: DASY4 (High Precision Assessment)

DASY4 Configuration:

- Probe: ET3DV6 - SN1530; ConvF(3.84, 3.84, 3.84); Calibrated: 9/26/2007
- Sensor-Surface: 4mm (Mechanical Surface Detection)
- Electronics: DAE3 Sn393; Calibrated: 8/29/2007
- Phantom: SAM 12; Type: SAM v4.0; Serial: TP:1009
- Measurement SW: DASY4, V4.7 Build 55; Postprocessing SW: SEMCAD, V1.8 Build 176

### Flat/Area Scan (91x101x1):

Measurement grid: dx=10mm, dy=10mm

Maximum value of SAR (interpolated) = 0.019 mW/g

### Flat/Zoom Scan (7x7x7)/Cube 0:

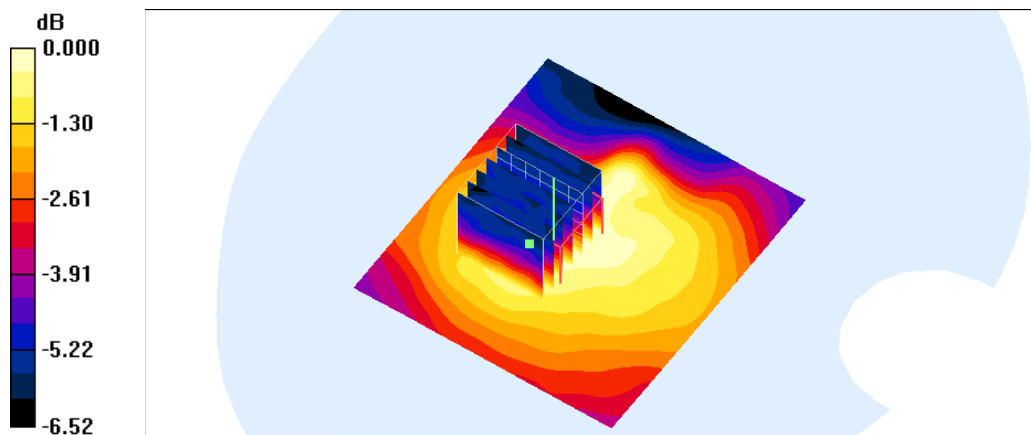
Measurement grid: dx=5mm, dy=5mm, dz=5mm

Reference Value = 3.22 V/m; Power Drift = -0.175 dB

Peak SAR (extrapolated) = 0.029 W/kg

**SAR(1 g) = 0.018 mW/g; SAR(10 g) = 0.013 mW/g**

Maximum value of SAR (measured) = 0.019 mW/g



0 dB = 0.019mW/g



Test Laboratory: A Test Lab Techno Corp. Date/Time: 3/18/2008 11:32:22 PM

### Flat\_Bluetooth CH39\_Tip Close Body\_NB3

**DUT: A335W; Type: Bluetooth class 1 plug and play dongle ; FCC ID: BCE-A335W**

Communication System: Bluetooth; Frequency: 2441 MHz; Duty Cycle: 1:1

Medium parameters used:  $f = 2441$  MHz;  $\sigma = 1.96$  mho/m;  $\epsilon_r = 52.2$ ;  $\rho = 1000$  kg/m<sup>3</sup>

Phantom section: Flat Section

Measurement Standard: DASY4 (High Precision Assessment)

DASY4 Configuration:

- Probe: ET3DV6 - SN1530; ConvF(3.84, 3.84, 3.84); Calibrated: 9/26/2007
- Sensor-Surface: 4mm (Mechanical Surface Detection)
- Electronics: DAE3 Sn393; Calibrated: 8/29/2007
- Phantom: SAM 12; Type: SAM v4.0; Serial: TP:1009
- Measurement SW: DASY4, V4.7 Build 55; Postprocessing SW: SEMCAD, V1.8 Build 176

### Flat/Area Scan (61x81x1):

Measurement grid: dx=15mm, dy=15mm

Maximum value of SAR (interpolated) = 0.019 mW/g

### Flat/Zoom Scan (7x7x7)/Cube 0:

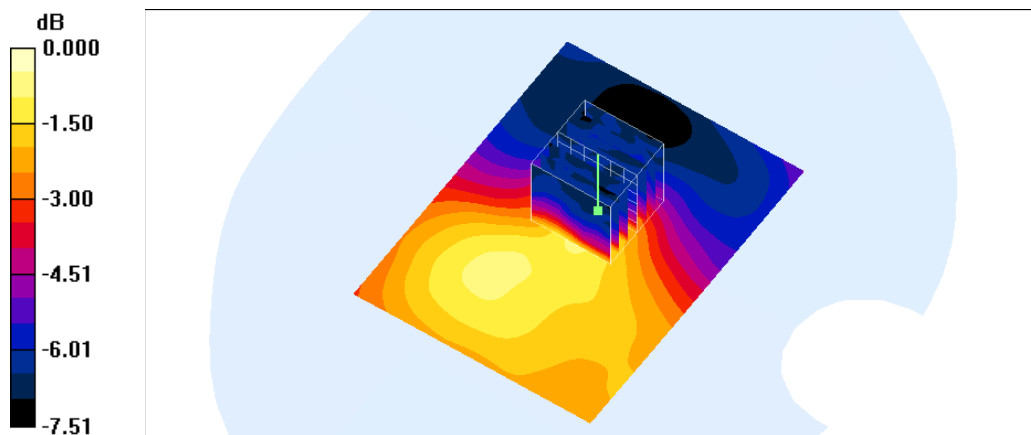
Measurement grid: dx=5mm, dy=5mm, dz=5mm

Reference Value = 3.27 V/m; Power Drift = -0.183 dB

Peak SAR (extrapolated) = 0.064 W/kg

**SAR(1 g) = 0.018 mW/g; SAR(10 g) = 0.010 mW/g**

Maximum value of SAR (measured) = 0.018 mW/g





Test Laboratory: A Test Lab Techno Corp. Date/Time: 3/19/2008 12:06:34 AM

### Flat\_Bluetooth CH78\_Tip Close Body\_NB3

**DUT: A335W; Type: Bluetooth class 1 plug and play dongle ; FCC ID: BCE-A335W**

Communication System: Bluetooth; Frequency: 2480 MHz; Duty Cycle: 1:1

Medium parameters used:  $f = 2480$  MHz;  $\sigma = 2.02$  mho/m;  $\epsilon_r = 52.2$ ;  $\rho = 1000$  kg/m<sup>3</sup>

Phantom section: Flat Section

Measurement Standard: DASY4 (High Precision Assessment)

DASY4 Configuration:

- Probe: ET3DV6 - SN1530; ConvF(3.84, 3.84, 3.84); Calibrated: 9/26/2007
- Sensor-Surface: 4mm (Mechanical Surface Detection)
- Electronics: DAE3 Sn393; Calibrated: 8/29/2007
- Phantom: SAM 12; Type: SAM v4.0; Serial: TP:1009
- Measurement SW: DASY4, V4.7 Build 55; Postprocessing SW: SEMCAD, V1.8 Build 176

### Flat/Area Scan (81x121x1):

Measurement grid: dx=10mm, dy=10mm

Maximum value of SAR (interpolated) = 0.016 mW/g

### Flat/Zoom Scan (7x7x7)/Cube 0:

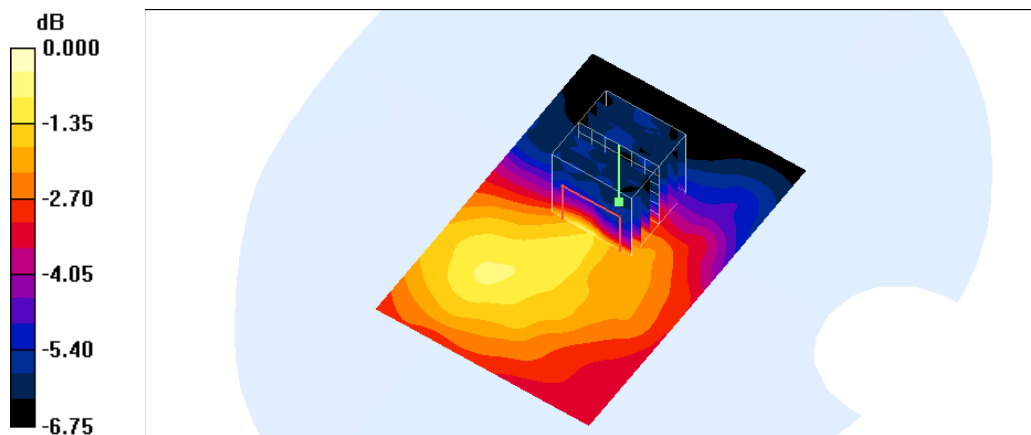
Measurement grid: dx=5mm, dy=5mm, dz=5mm

Reference Value = 2.95 V/m; Power Drift = 0.006 dB

Peak SAR (extrapolated) = 0.080 W/kg

**SAR(1 g) = 0.019 mW/g; SAR(10 g) = 0.011 mW/g**

Maximum value of SAR (measured) = 0.019 mW/g



0 dB = 0.019mW/g



## ***Appendix C - Calibration***

All of the instruments Calibration information are listed below.

- Dipole \_ D2450V2 SN:712 Calibration No.D2450V2-712\_Feb07
- Probe \_ ET3DV6 SN:1530 Calibration No.ET3-1530\_Sep07
- DAE \_ DAE4 SN:541 Calibration No.DAE4-541\_Oct06