

TPL COMMUNICATIONS

671 R5X
0442 MEX100

671 R5X
0442 MEX100

671 R5X
0442 MEX100

543C
5062 V

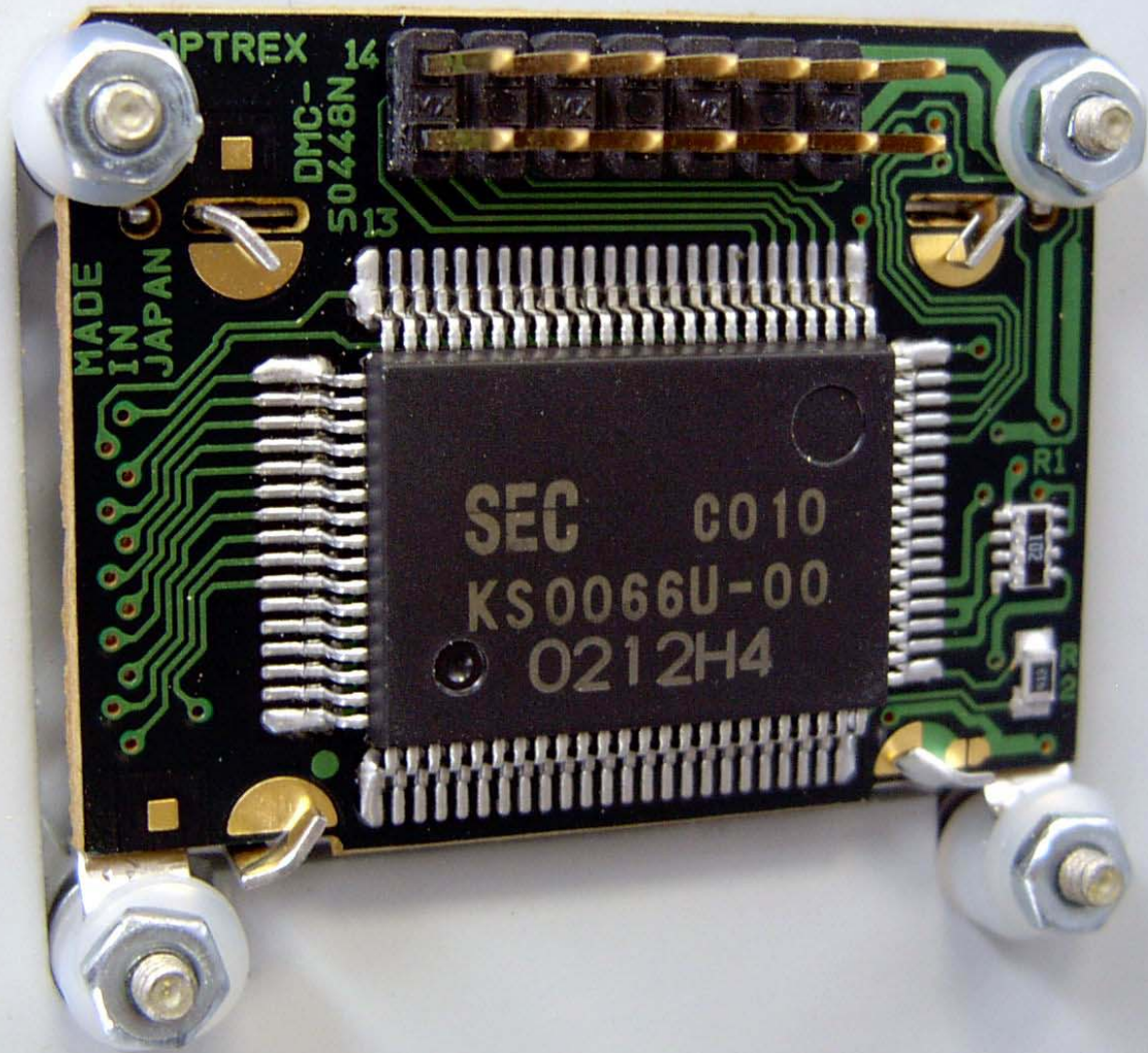
543C
5062 V

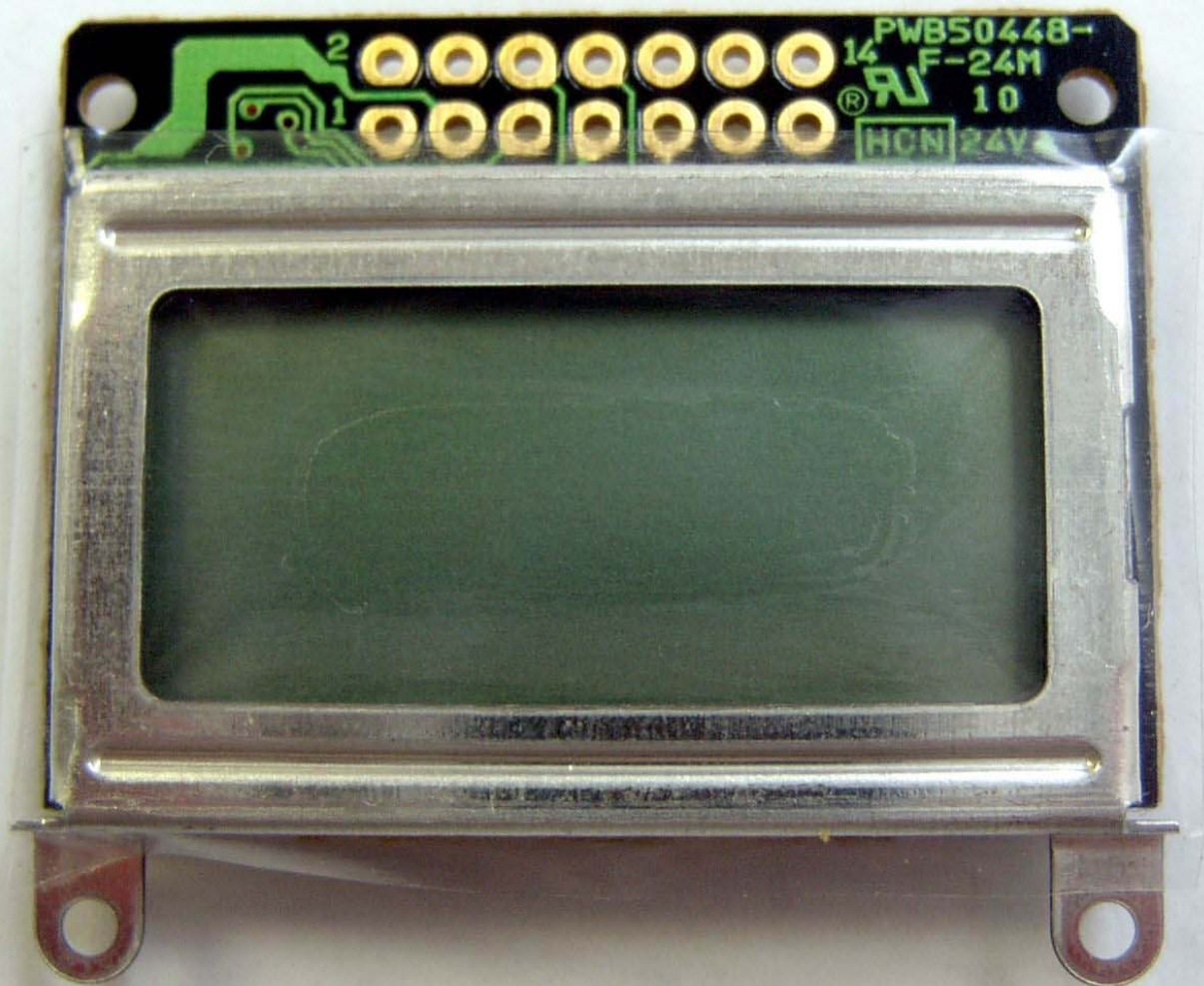
The central area of the PCB is populated with a variety of surface-mount components. Key components include:

- Resistors: R1 through R60, with values ranging from 100Ω to 10kΩ.
- Capacitors: C1 through C28, including electrolytic capacitors (C23, C24) and ceramic capacitors.
- Diodes: D1 through D8, likely Schottky or signal diodes.
- ICs: U1 through U9, including several 477-series ICs and a 74VHC04 hex inverters.
- Other components: Q1, Q2 (transistors), and various small surface-mount components.

A gold-plated edge connector strip is attached to the bottom edge of the PCB. It features 22 pins, with labels 1, 5, 10, 15, and 22 indicating specific pin positions.

P1





PWB50448-

F-24M

10

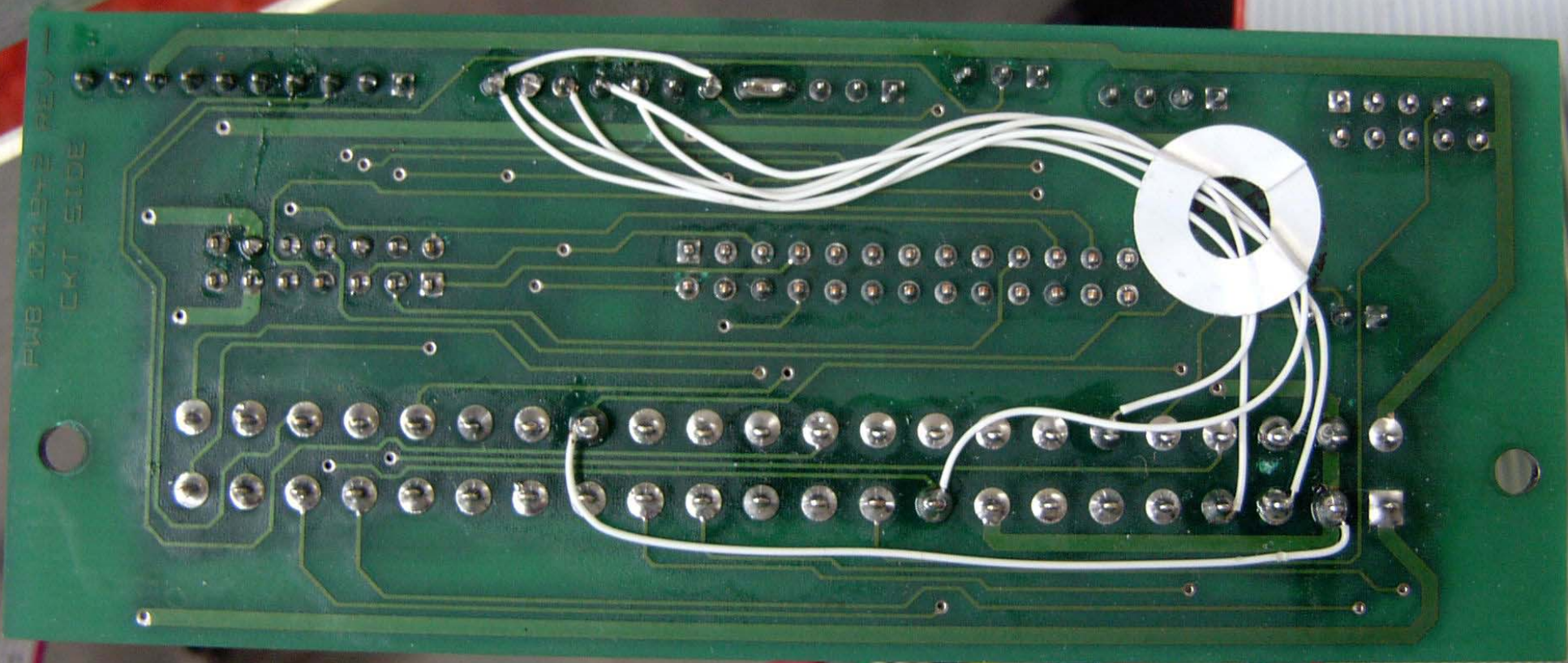
HCN 24V

2

1

14

®



PWB 101572 REV 1
CKT SIDE

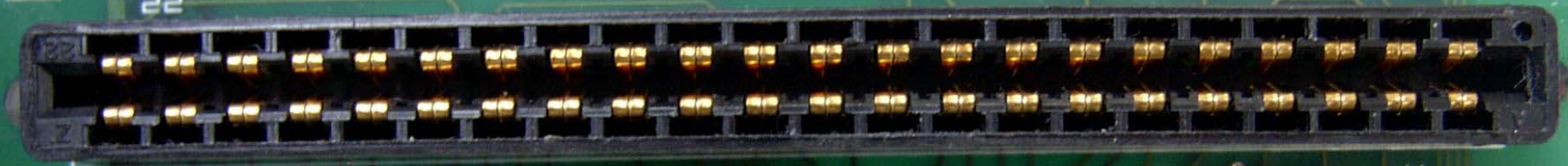
102700 ERC 06/10

ASSY 101943
HMS MOTHERBOARD

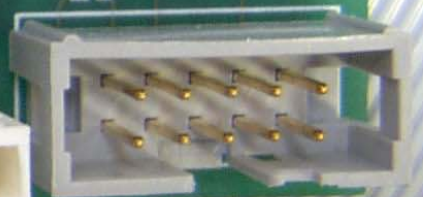
A

22

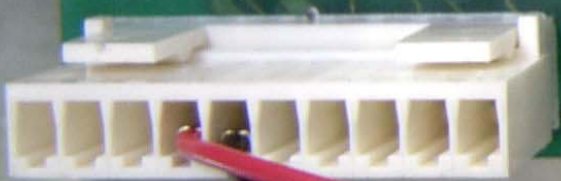
J4



J2



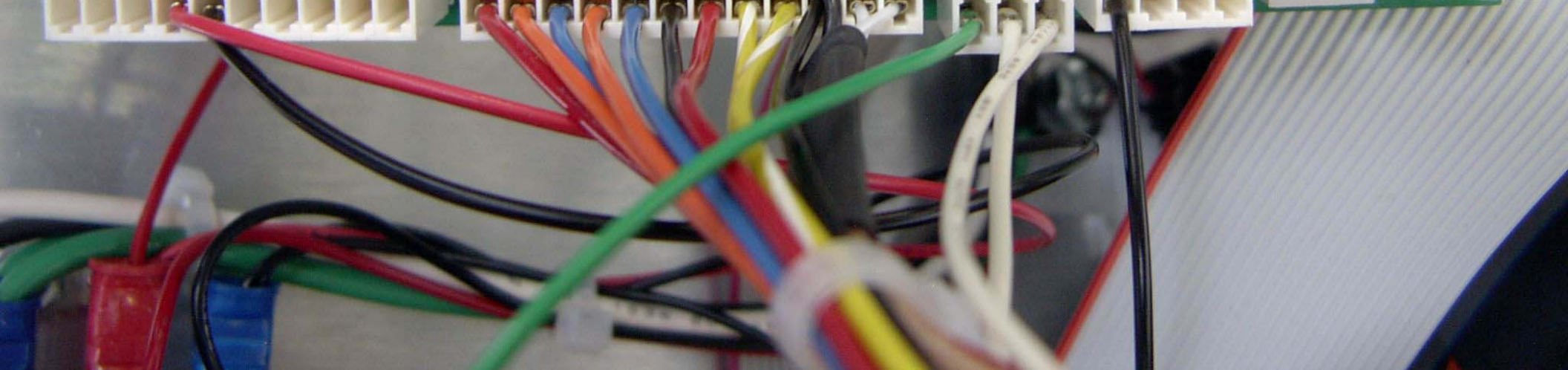
J3

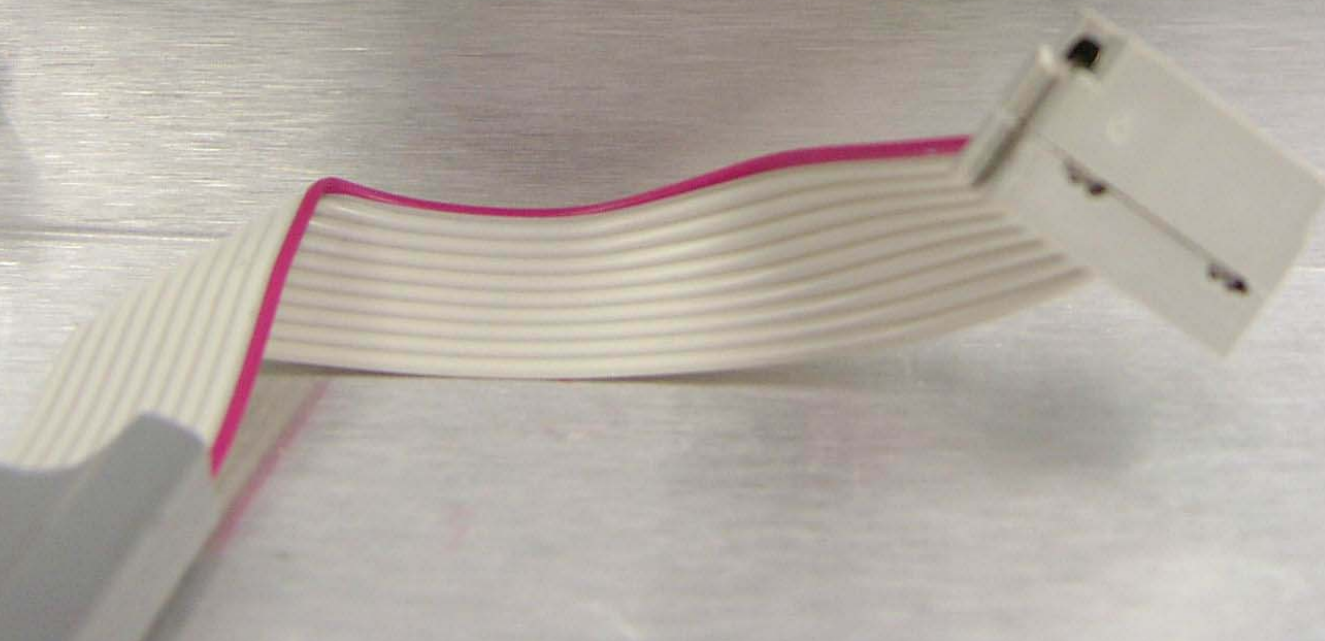
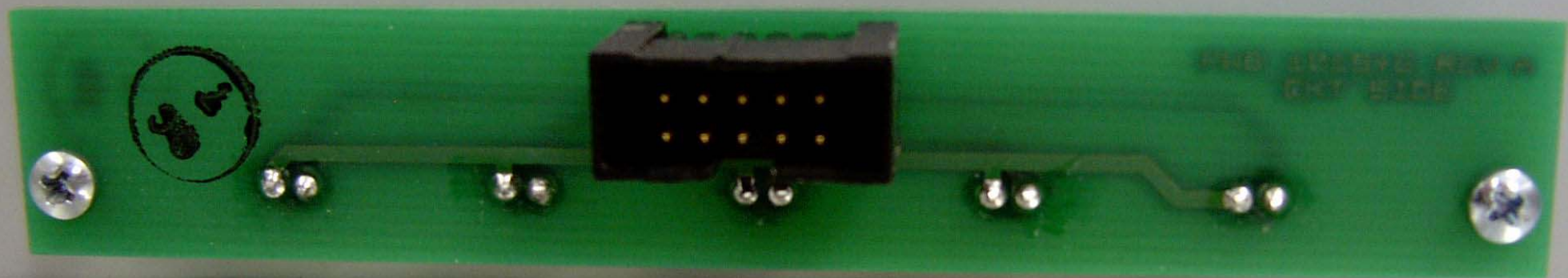


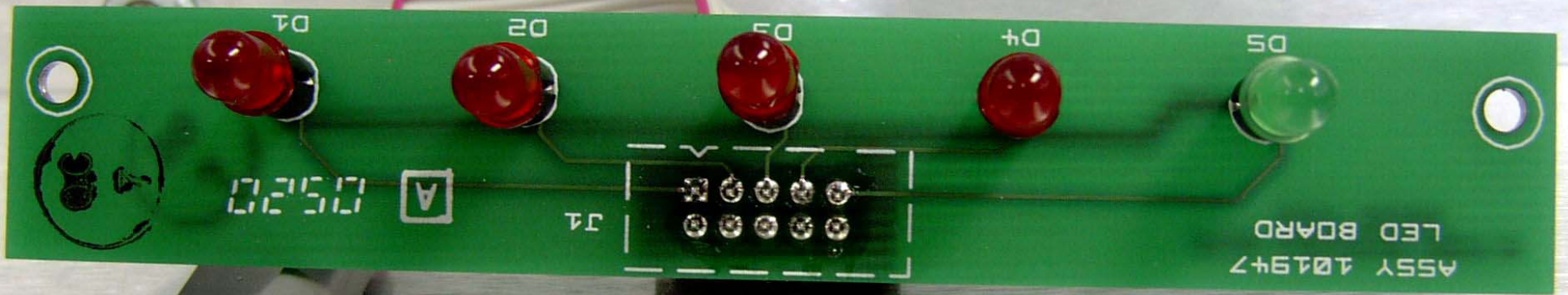
J7



J1







ASSY 1019+7
LED BOARD

J1

0520

A

D5

D4

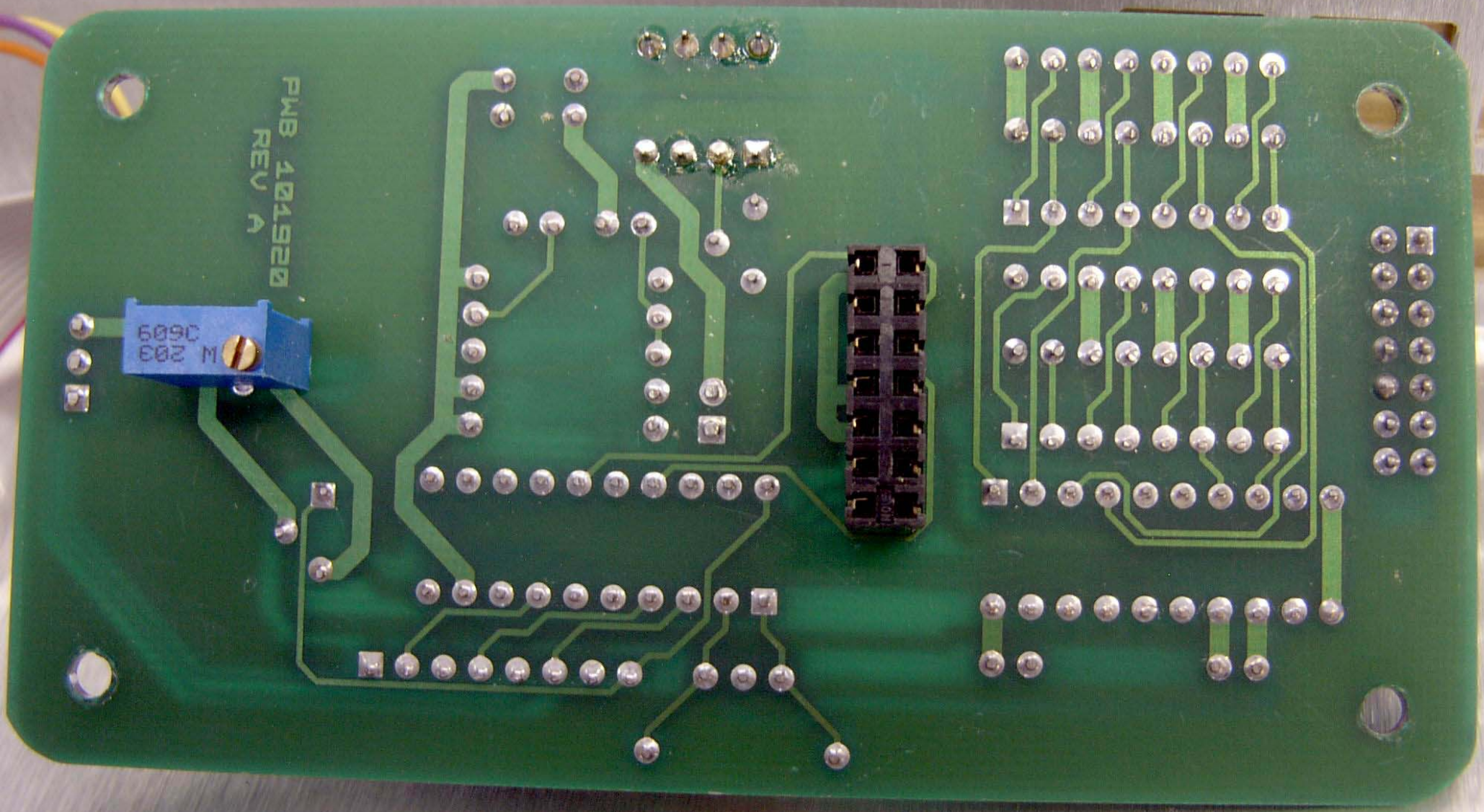
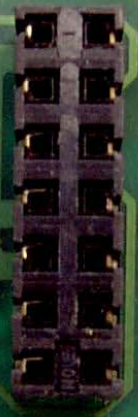
D3

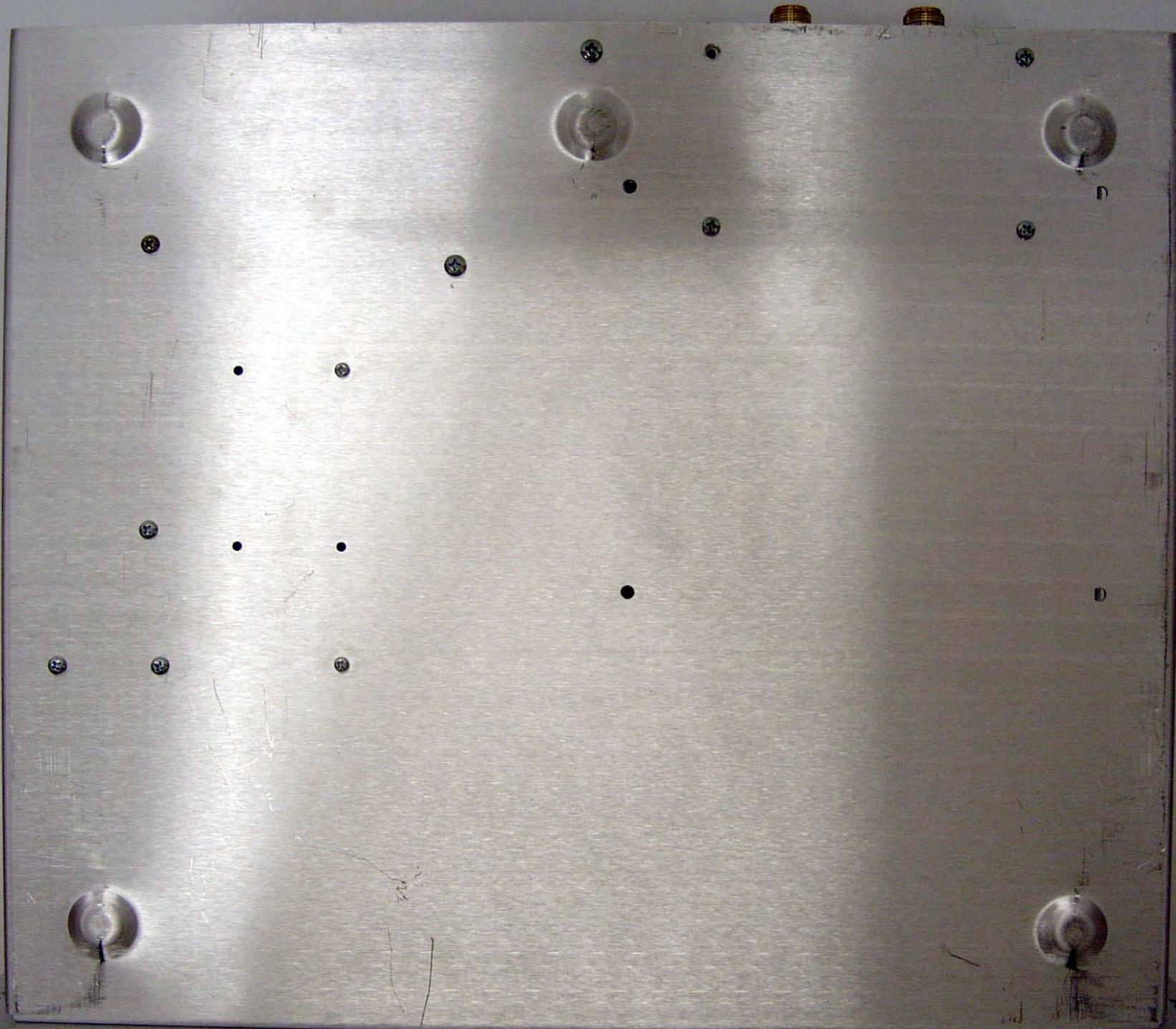
D2

D1

PWB 101920
REV A

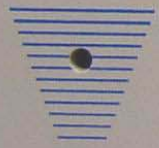
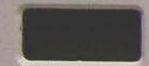
609C
E02 M





TPL
COMMUNICATIONS

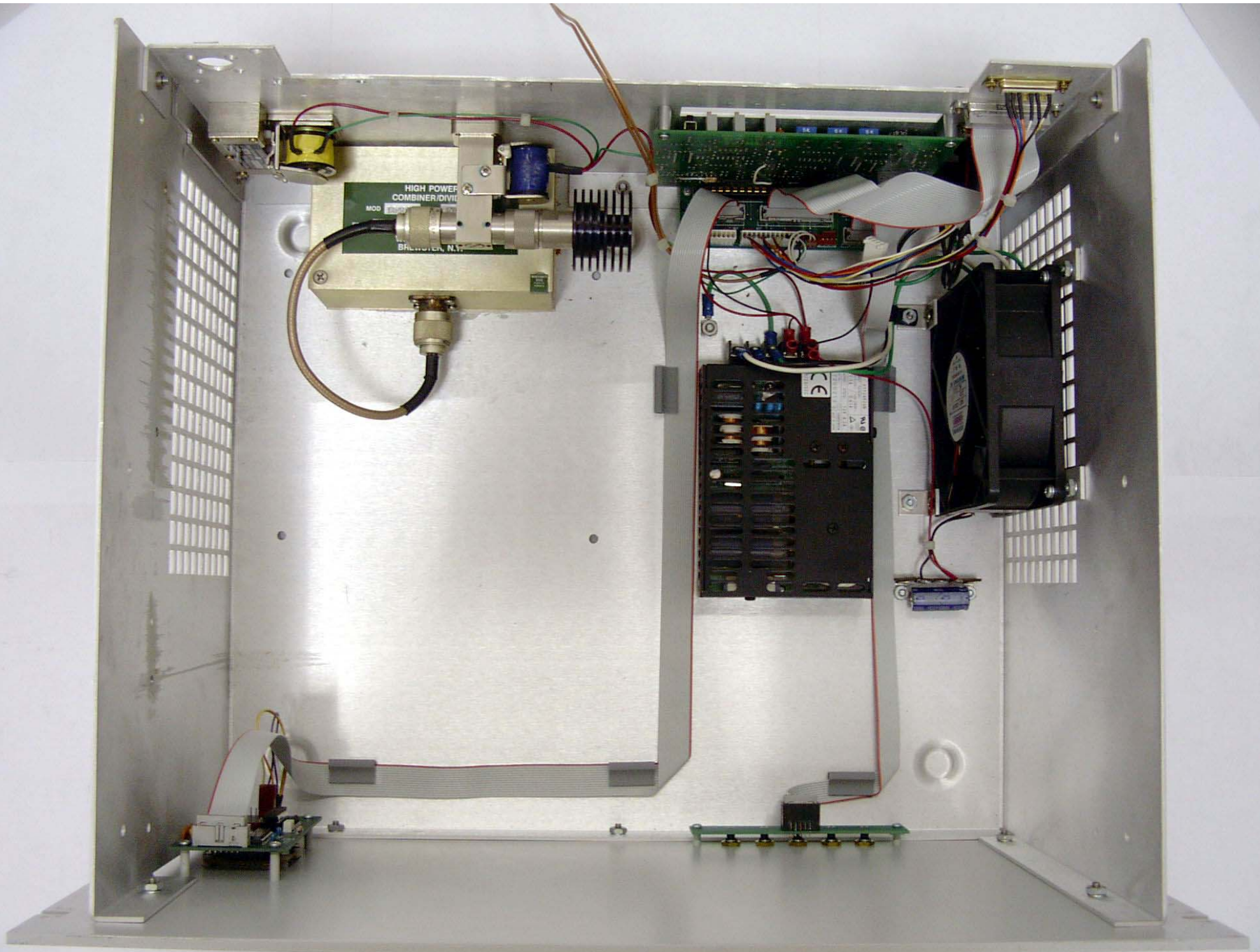
AIR BAND
AMPLIFIER CONTROLLER



ALARMS

DC ON SWR OTEMP LOPWR FANS

Five indicator lights are arranged horizontally. The first light is labeled "DC ON". The remaining four lights are grouped under a bracket labeled "ALARMS" and are individually labeled "SWR", "OTEMP", "LOPWR", and "FANS".







FACTORY ADJ. TO 132.65 MHz

RF POWER AMPLIFIER			
MODEL NO.	CON-1AR-AIR	MODE	AM
FREQ.	118-136	MHZ	
VOLTAGE	240 VAC	INPUT PWR	10-20W
		OUTPUT PWR	500W
F.C.C. TYPE ACCEPTANCE NO.		SERIAL NO.	
TPL COMMUNICATIONS 3370 San Fernando Rd., Los Angeles, CA 90065 USA			

WARNING
THIS AMPLIFIER GENERATES
DANGEROUSLY HIGH LEVELS OF RF
EXTERNALLY AND DC CURRENT
INTERNALLY. USE EXTREME CARE
WHEN OPERATING OR SERVICING.