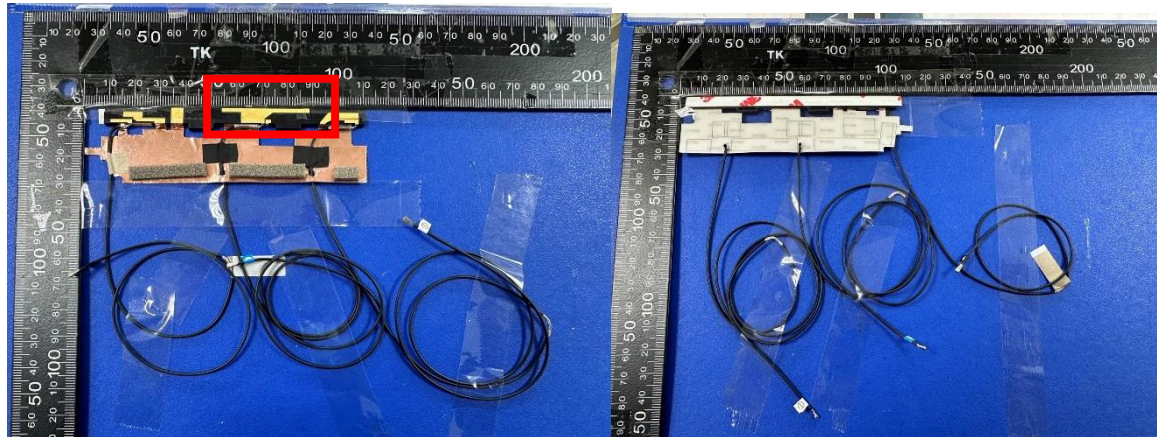


	Ant supplier	Part number	Drawing	Photo
Ant5	6036B0313201	0-3302700850	V	V
Ant6	6036B0313101	00-3302700950	V	V
Ant7	6036B0313301	00-2602750650	V	V
Ant8	6036B0313201	0-3302700850	V	V

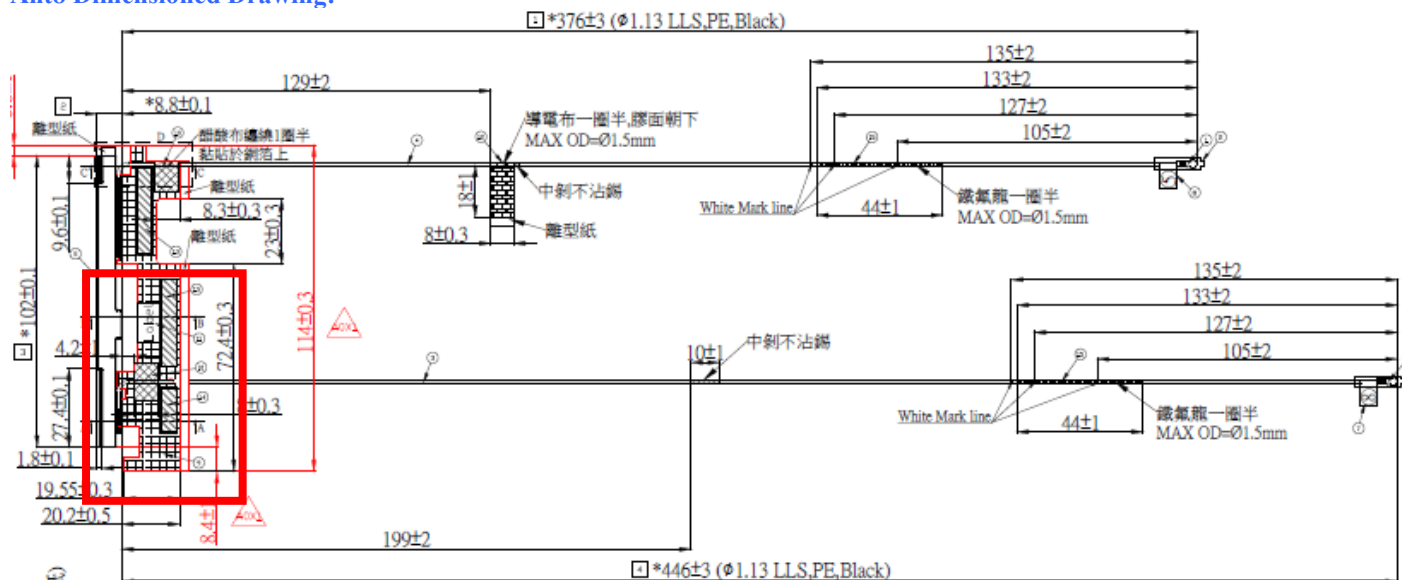
[illegible]



Technical drawing of the assembly showing dimensions and components. The drawing includes a side view of the assembly with dimensions: 2 \* 61 ± 0.1, 1 \* 187 ± 2 (Ø1.37 LLS, PE, Black), and 35.5 ± 0.3. Components are labeled with numbers 1 through 11. A label is attached to the assembly. The drawing also shows a cross-section of the assembly with a black Mylar layer and a powder layer.



# Ant8 Dimensioned Drawing:



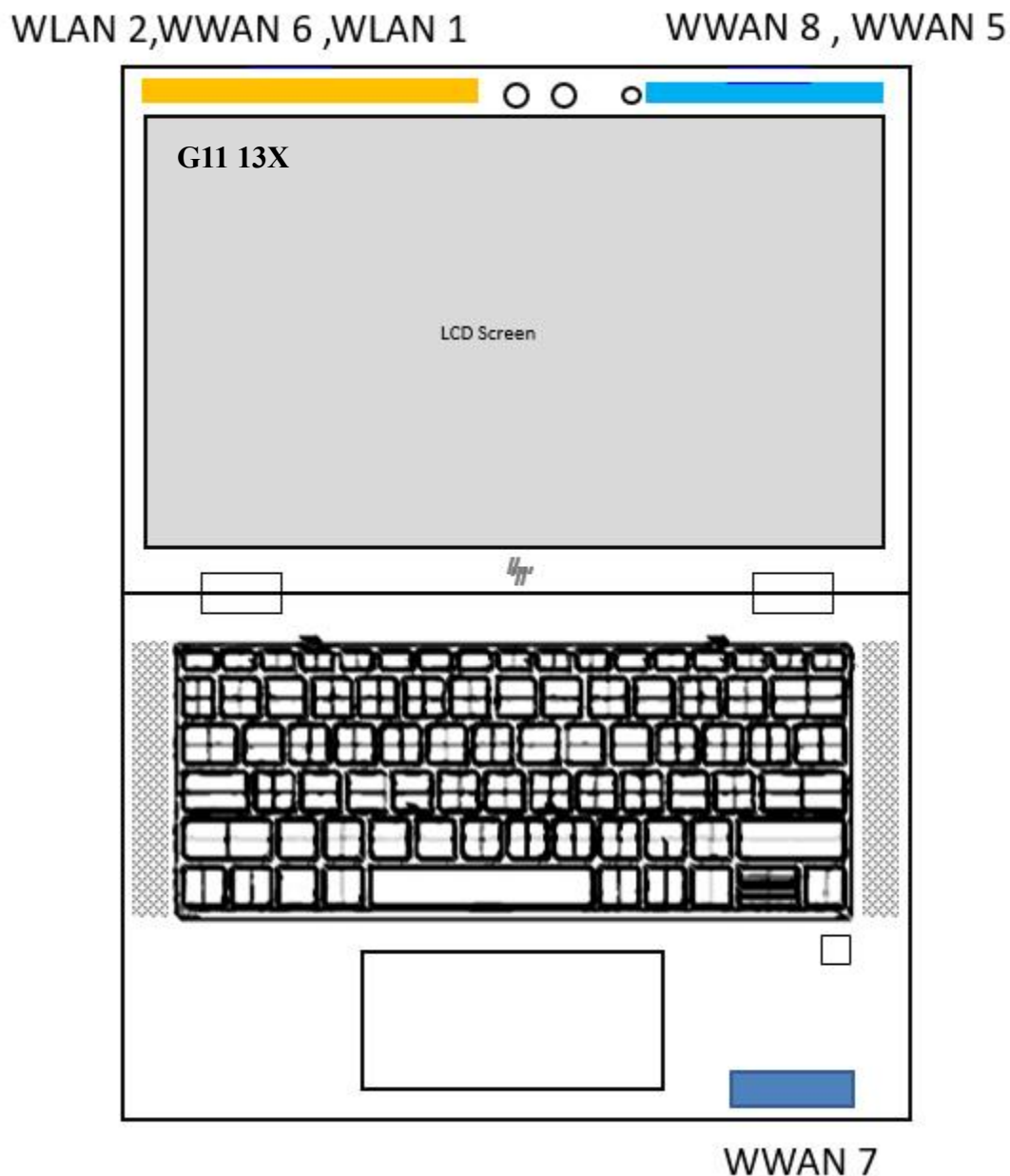
## Ant8 Photo:



## Section 4. Antenna Host Platform Location Information

Include a **dimensioned photo(s) or dimensioned drawing(s)** of Main and Aux antenna placements (measurements are not required for receive-only antenna).

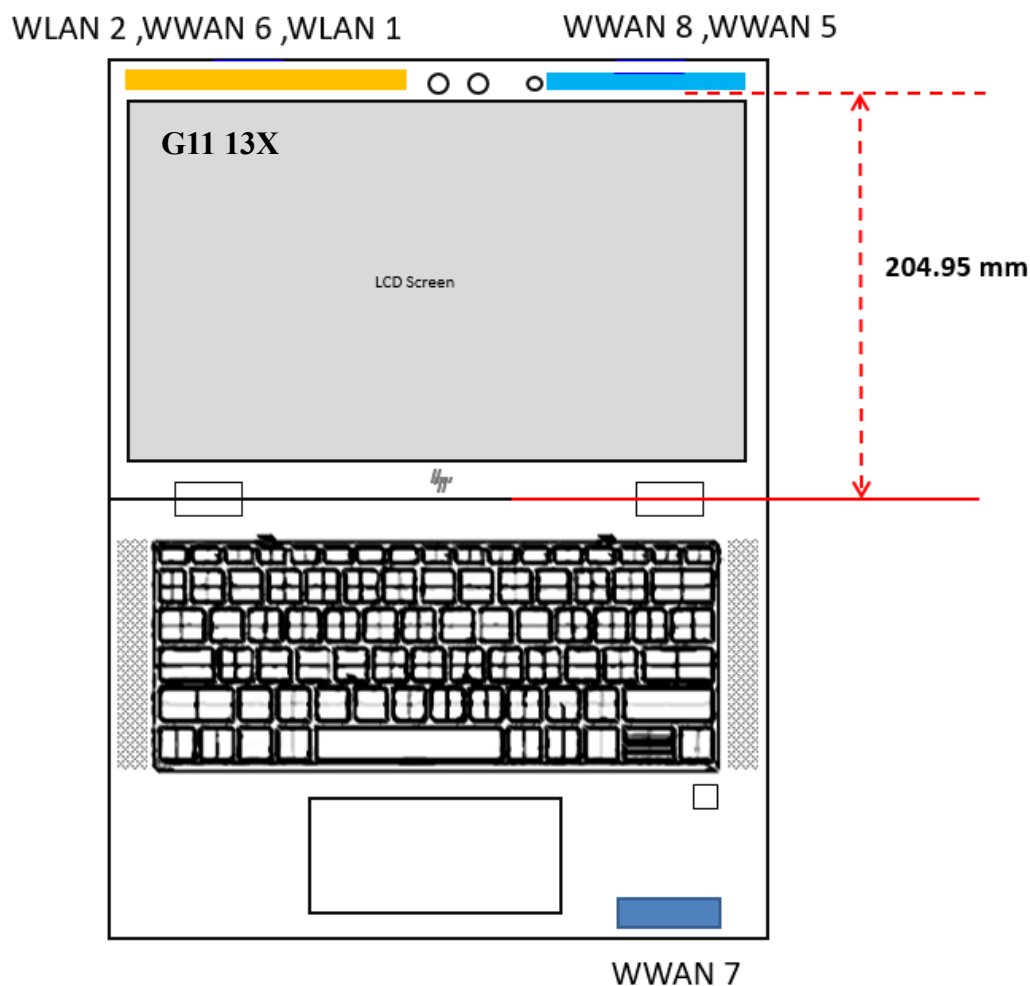
Any antenna that transmits must show dimensions to bottom of laptop. Provide a description of the materials that are used for supporting or surrounding transmit antennas; for example, non-conductive plastics vs. conductive coated plastic or metallic materials.

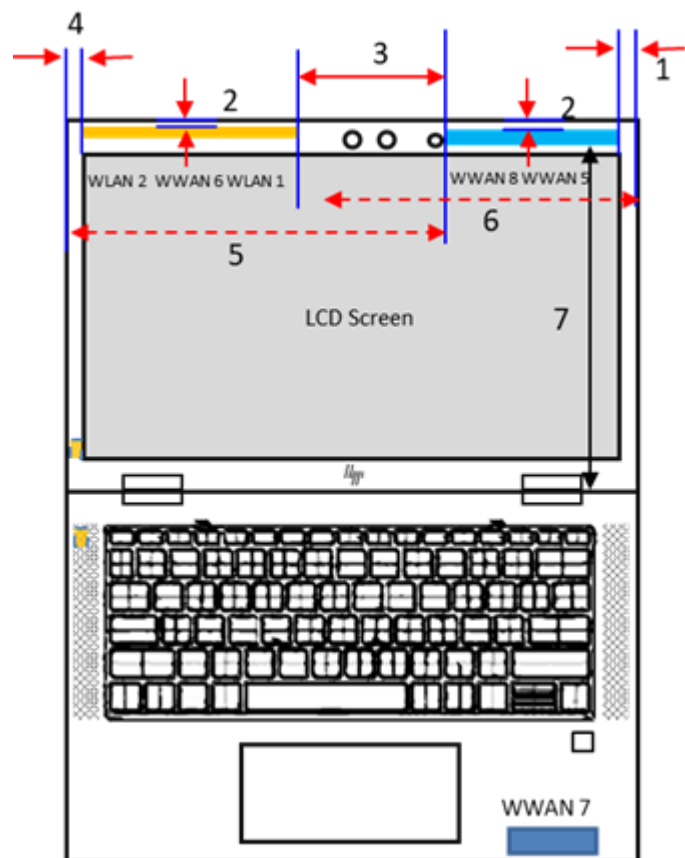


## Section 5. Antenna Host Platform Location Information

Include a **dimensioned photo(s) or dimensioned drawing(s)** of Ant5,Ant6,Ant7,Ant8 placements (measurements are not required for receive-only antenna).

Any antenna that transmits must show dimensions to bottom of laptop. Provide a description of the materials that are used for supporting or surrounding transmit antennas; for example, non-conductive plastics vs. conductive coated plastic or metallic materials.

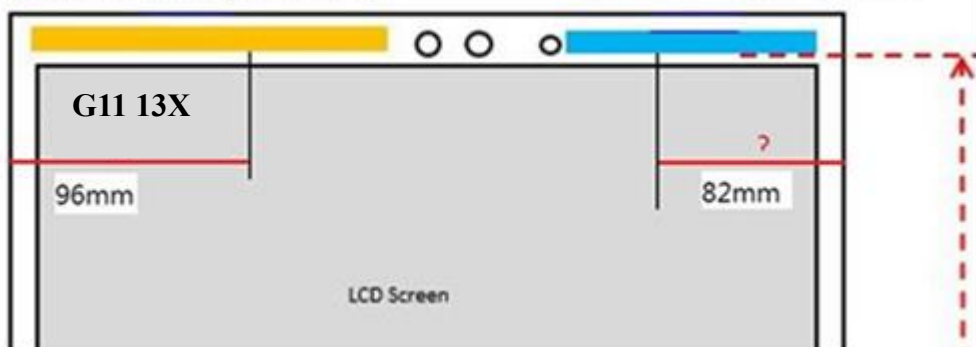




Plot	(mm)
1	14.146
2	2.05
3	75.825
4	11.796
5	184.05
6	186.375
7	204.95

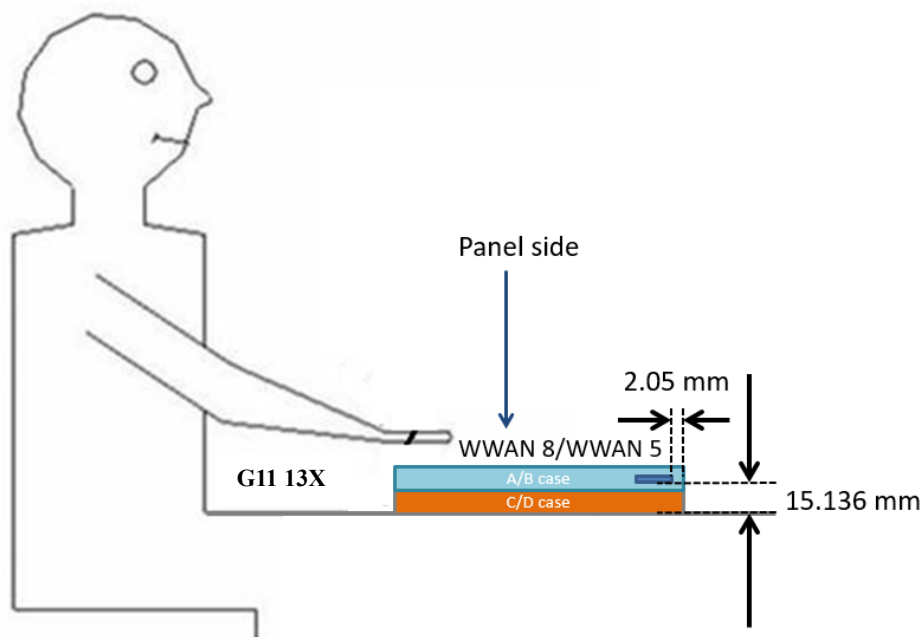
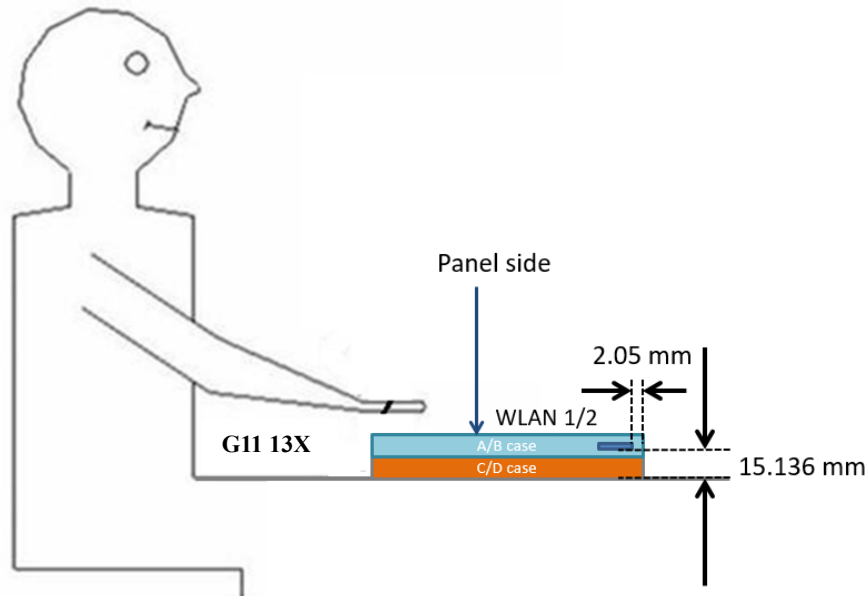
WLAN 2 ,WWAN 6 ,WLAN 1

WWAN 8 ,WWAN 5



## Section 6. Antenna dimensional information for SAR evaluation

Include a **dimensioned photo(s) or dimensioned drawing(s)** showing the distance (mm) between the transmit antennas and the user. For notebook/laptop hosts show lapheld position (example below). For tablet hosts show all orientations including lapheld, primary & secondary portrait, primary & secondary landscape positions. Include a description of any proximity sensors or power throttling implementations that limit or exclude use of any host orientation.



## Section 7. Diagram Example of Co-Location Antenna Separation

Include a **dimensioned photo or dimensioned drawing** showing the distance (mm) between all WLAN transmit antennas and other co-located radiator transmit antenna such as Bluetooth, WWAN,..

(Note: Due to the evolving rules regarding co-location, each platform will need to be reviewed on a case by case basis)

