

US Tech Test Report:  
FCC ID:  
Test Report Number:  
Issue Date:  
Customer:  
Model:

Part 90.242  
B7MTR-6000TIS-WB  
15-0297  
February 4, 2015  
RADIO SYSTEMS INC  
TR-6000

---

## EXTERNAL PHOTOGRAPHS



**Figure 1. Top of EUT (TR-6000)**

US Tech Test Report:  
FCC ID:  
Test Report Number:  
Issue Date:  
Customer:  
Model:

Part 90.242  
B7MTR-6000TIS-WB  
15-0297  
February 4, 2015  
RADIO SYSTEMS INC  
TR-6000



Figure 2. Back of EUT

US Tech Test Report:  
FCC ID:  
Test Report Number:  
Issue Date:  
Customer:  
Model:

Part 90.242  
B7MTR-6000TIS-WB  
15-0297  
February 4, 2015  
RADIO SYSTEMS INC  
TR-6000



**Figure 3. Front Panel**

US Tech Test Report:  
FCC ID:  
Test Report Number:  
Issue Date:  
Customer:  
Model:

Part 90.242  
B7MTR-6000TIS-WB  
15-0297  
February 4, 2015  
RADIO SYSTEMS INC  
TR-6000



**Figure 4. Side 1**

US Tech Test Report:  
FCC ID:  
Test Report Number:  
Issue Date:  
Customer:  
Model:

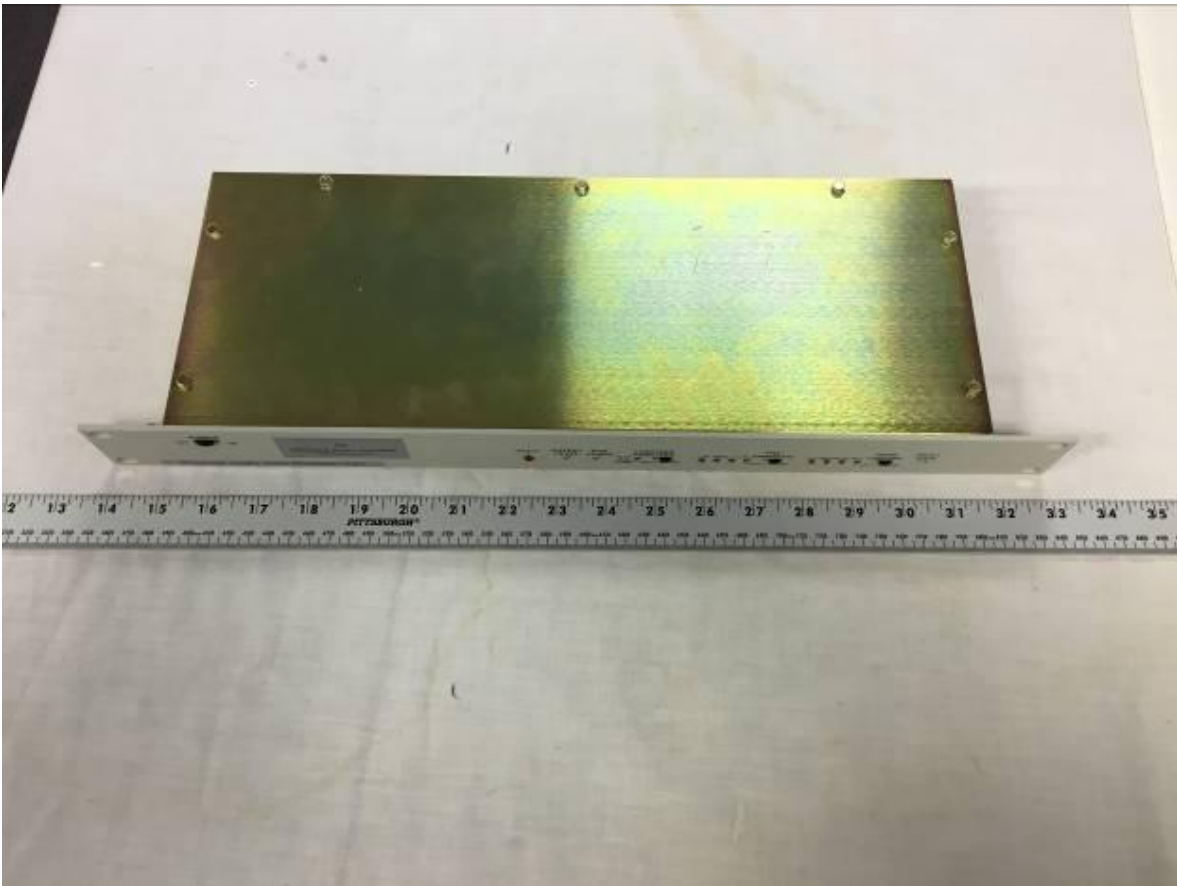
Part 90.242  
B7MTR-6000TIS-WB  
15-0297  
February 4, 2015  
RADIO SYSTEMS INC  
TR-6000



**Figure 5. Side 2**

US Tech Test Report:  
FCC ID:  
Test Report Number:  
Issue Date:  
Customer:  
Model:

Part 90.242  
B7MTR-6000TIS-WB  
15-0297  
February 4, 2015  
RADIO SYSTEMS INC  
TR-6000



**Figure 6. Filter #1 (Active) Top**

US Tech Test Report:  
FCC ID:  
Test Report Number:  
Issue Date:  
Customer:  
Model:

Part 90.242  
B7MTR-6000TIS-WB  
15-0297  
February 4, 2015  
RADIO SYSTEMS INC  
TR-6000



**Figure 7. Side 1 of Filter #1**

US Tech Test Report:  
FCC ID:  
Test Report Number:  
Issue Date:  
Customer:  
Model:

Part 90.242  
B7MTR-6000TIS-WB  
15-0297  
February 4, 2015  
RADIO SYSTEMS INC  
TR-6000

---



**Figure 8. Back of Filter #1**



US Tech Test Report:  
FCC ID:  
Test Report Number:  
Issue Date:  
Customer:  
Model:

Part 90.242  
B7MTR-6000TIS-WB  
15-0297  
February 4, 2015  
RADIO SYSTEMS INC  
TR-6000



**Figure 9. Side 2 of Filter #1**



Figure 10. Top of Filter #2 (Passive)

US Tech Test Report:  
FCC ID:  
Test Report Number:  
Issue Date:  
Customer:  
Model:

Part 90.242  
B7MTR-6000TIS-WB  
15-0297  
February 4, 2015  
RADIO SYSTEMS INC  
TR-6000



**Figure 11. Side 1 of Filter #2**

US Tech Test Report:  
FCC ID:  
Test Report Number:  
Issue Date:  
Customer:  
Model:

Part 90.242  
B7MTR-6000TIS-WB  
15-0297  
February 4, 2015  
RADIO SYSTEMS INC  
TR-6000



**Figure 12. Side 2 of Filter #2**

US Tech Test Report:  
FCC ID:  
Test Report Number:  
Issue Date:  
Customer:  
Model:

Part 90.242  
B7MTR-6000TIS-WB  
15-0297  
February 4, 2015  
RADIO SYSTEMS INC  
TR-6000



**Figure 13. Side 3 of Filter #2**

US Tech Test Report:  
FCC ID:  
Test Report Number:  
Issue Date:  
Customer:  
Model:

Part 90.242  
B7MTR-6000TIS-WB  
15-0297  
February 4, 2015  
RADIO SYSTEMS INC  
TR-6000



**Figure 14. Side 4 of Filter #2**

US Tech Test Report:  
FCC ID:  
Test Report Number:  
Issue Date:  
Customer:  
Model:

Part 90.242  
B7MTR-6000TIS-WB  
15-0297  
February 4, 2015  
RADIO SYSTEMS INC  
TR-6000



**Figure 15. Bottom of Filter #2**