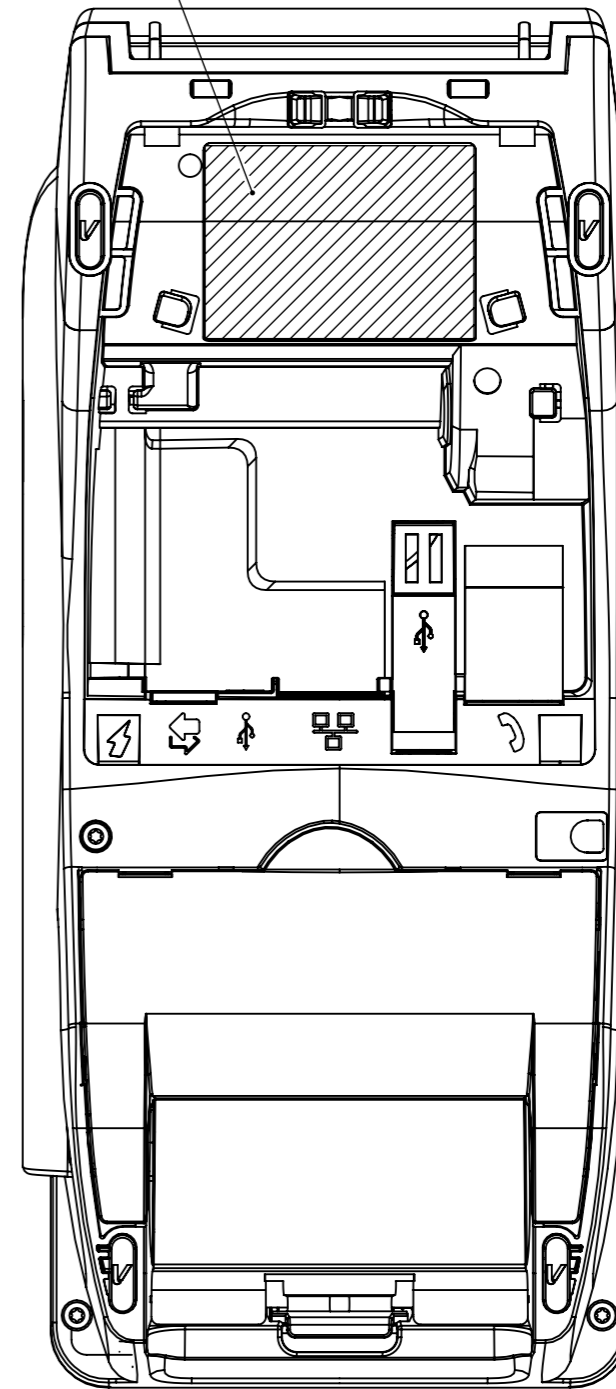


PRODUCT LABEL ID



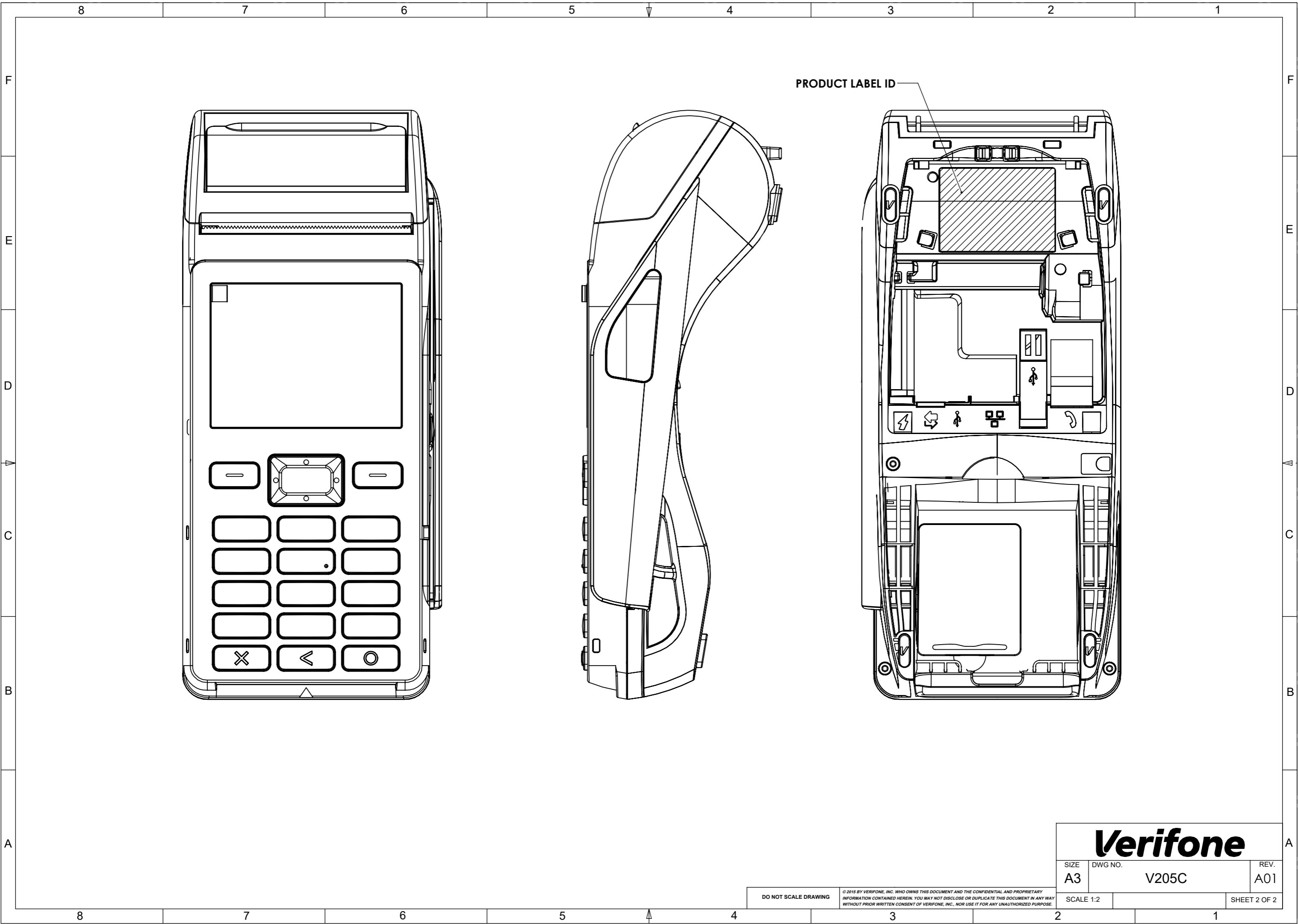
The FCC ID is not on the exterior of the device but labelling meets the conditions allowed in KDB 784748 for the label to be placed in a user accessible area:

1. The device is handheld
2. The user does not require any special tools to access the FCC label
3. The label is not removable
4. The FCC ID is on the Product ID label. This is the same label as the Model Number, and location is shown in the Installation Guide
5. FCC15.19(a) statement is on the Certification and Regulations guide due to device size
6. The FCC ID is found under the cable cover (Product Label ID in graphic) and the cover must be removed to make required connections. At this time, the FCC ID will be visible to the user.

Verifone		
SIZE A3	DWG NO. V200T	REV. A01
SCALE 2:1		SHEET 1 OF 2

DO NOT SCALE DRAWING

© 2016 BY VERIFONE, INC. WHO OWNS THIS DOCUMENT AND THE CONFIDENTIAL AND PROPRIETARY INFORMATION CONTAINED HEREIN. YOU MAY NOT DISCLOSE OR DUPLICATE THIS DOCUMENT IN ANY WAY WITHOUT PRIOR WRITTEN CONSENT OF VERIFONE, INC., NOR USE IT FOR ANY UNAUTHORIZED PURPOSE.



PRODUCT LABEL ID

Verifone		
SIZE A3	DWG NO. V205C	REV. A01
SCALE 1:2		SHEET 2 OF 2

DO NOT SCALE DRAWING © 2015 BY VERIFONE, INC. WHO OWNS THIS DOCUMENT AND THE CONFIDENTIAL AND PROPRIETARY INFORMATION CONTAINED HEREIN. YOU MAY NOT DISCLOSE OR DUPLICATE THIS DOCUMENT IN ANY WAY WITHOUT PRIOR WRITTEN CONSENT OF VERIFONE, INC., NOR USE IT FOR ANY UNAUTHORIZED PURPOSE.