

**EXHIBIT 9****Internal Photographs**

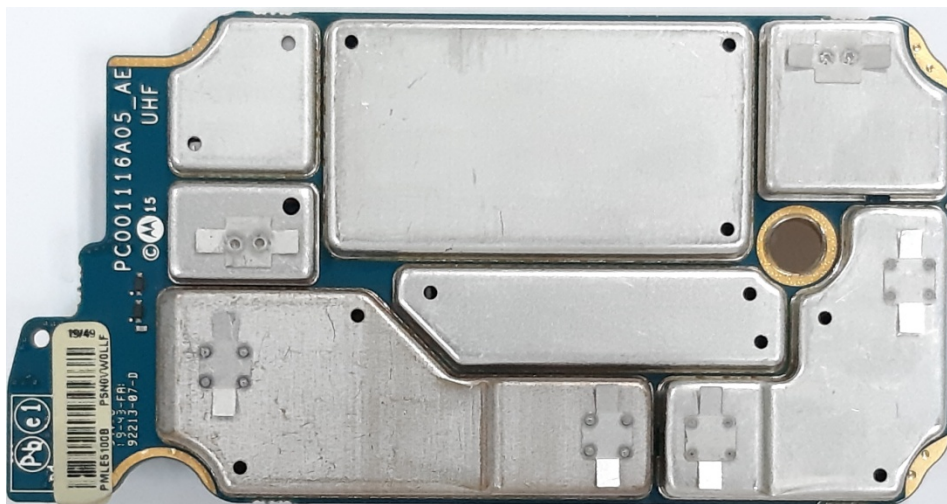
(Pursuant to FCC Part 2.1033(b)(7) and 2.1033(c)(12))

The following photographs are attached.

**Exhibit**

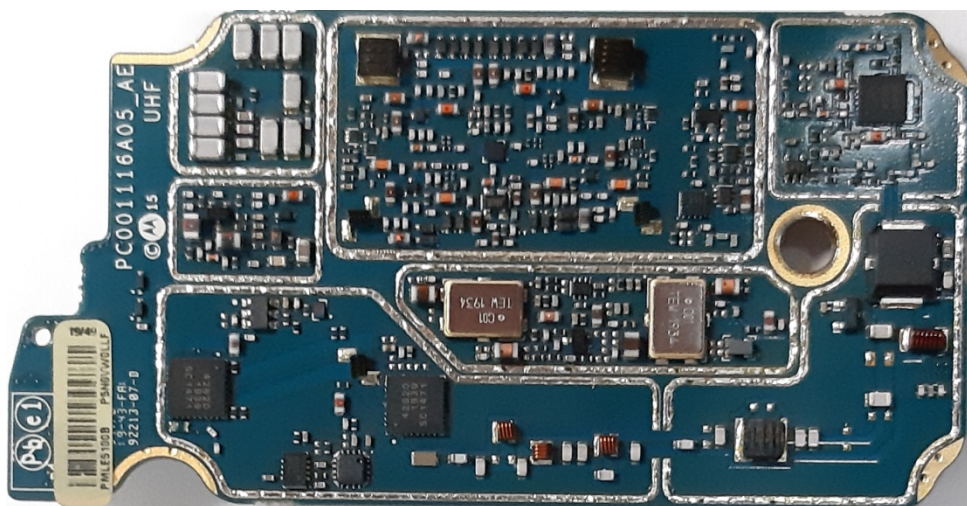
1. RF board <u>with</u> Shields (Top) (APX6000/APX5000/APX6000XE/APX6000Li)	9A
2. RF board <u>without</u> Shields (Top) (APX6000/APX5000/APX6000XE/APX6000Li)	9B
3. RF board <u>with</u> Shields (Bottom) (APX6000/APX5000/APX6000XE/APX6000Li)	9C
4. RF board <u>without</u> Shields (Bottom) (APX6000/APX5000/APX6000XE/APX6000Li)	9D
5. Expansion board <u>with</u> shields (Top) (APX6000/APX5000/APX6000XE/APX6000Li)	9E
6. Expansion board <u>without</u> shields (Top) (APX6000/APX5000/APX6000XE/APX6000Li)	9F
7. Expansion board <u>with</u> shields (Bottom) (APX6000/APX5000/APX6000XE/APX6000Li)	9G
8. Expansion board <u>without</u> shields (Bottom) (APX6000/APX5000/APX6000XE/APX6000Li)	9H
9. Vocon board <u>with</u> shields (Top) (APX6000/APX5000/APX6000XE/APX6000Li)	9I
10. Vocon board <u>without</u> shields (Top) (APX6000/APX5000/APX6000XE/APX6000Li)	9J
11. Vocon board <u>with</u> shields (Bottom) (APX6000/APX5000/APX6000XE/APX6000Li)	9K
12. Vocon board <u>without</u> shields (Bottom) (APX6000/APX5000/APX6000XE/APX6000Li)	9L
13. RF and Vocon boards <u>with</u> chassis and housing (APX6000/APX6000Li/APX5000 Model 1.5) (Front side)	9M
14. Expansion board <u>with</u> chassis and housing (APX6000/APX6000Li/APX5000 Model 1.5) (Back side)	9N
15. RF and Vocon boards <u>with</u> chassis and housing (APX6000/APX6000Li/APX5000 Model 2.5) (Front side)	9O
16. Expansion board <u>with</u> chassis and housing (APX6000/APX6000Li/APX5000 Model 2.5) (Back side)	9P
17. RF and Vocon boards <u>with</u> chassis and housing (APX6000/ APX6000Li /APX5000 Model 3.5) (Front side)	9Q
18. Expansion board <u>with</u> chassis and housing (APX6000/ APX6000Li /APX5000 Model 3.5) (Back side)	9R
19. RF and Vocon boards <u>with</u> chassis and housing of APX6000XE Model 1.5 (Front side)	9S
20. Expansion board <u>with</u> chassis and housing of APX6000XE Model 1.5 (Back side)	9T
21. RF and Vocon boards <u>with</u> chassis and housing of APX6000XE Model 2.5 (Front side)	9U
22. Expansion board <u>with</u> chassis and housing of APX6000XE Model 2.5 (Back side)	9V
23. RF and Vocon boards <u>with</u> chassis and housing of APX6000XE Model 3.5 (Front side)	9W
24. Expansion board <u>with</u> chassis and housing of APX6000XE Model 3.5 (Back side)	9X
25. Exploded view of APX6000/APX6000Li/APX5000/SRX2200 Model 1.5	9Y
26. Exploded view of APX6000/APX6000Li/APX5000/SRX2200 Model 2.5	9Z
27. Exploded view of APX6000/APX6000Li/APX5000/SRX2200 Model 3.5	9AA
28. Exploded view of APX6000XE Model 1.5	9AB
29. Exploded view of APX6000XE Model 2.5	9AC
30. Exploded view of APX6000XE Model 3.5	9AD

**Exhibits 9A**



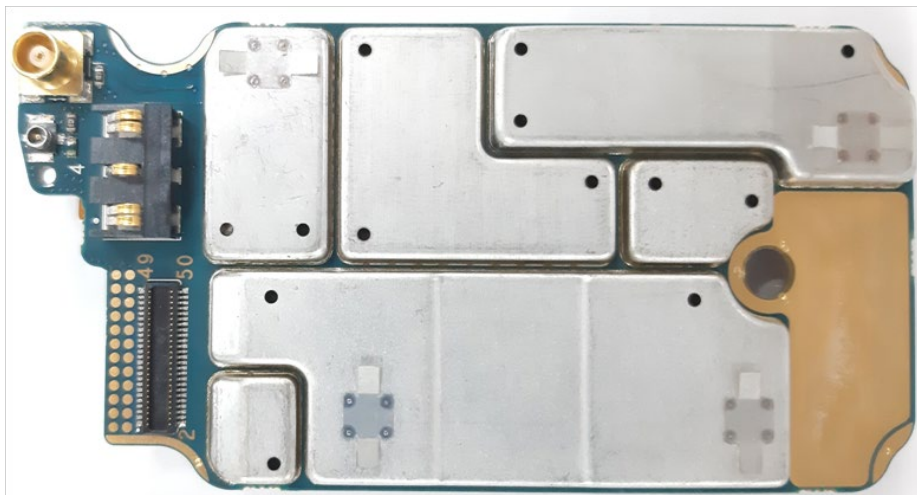
RF board with Shields (Top)  
(APX6000/APX5000/APX6000XE/APX6000Li)

**Exhibit 9B**



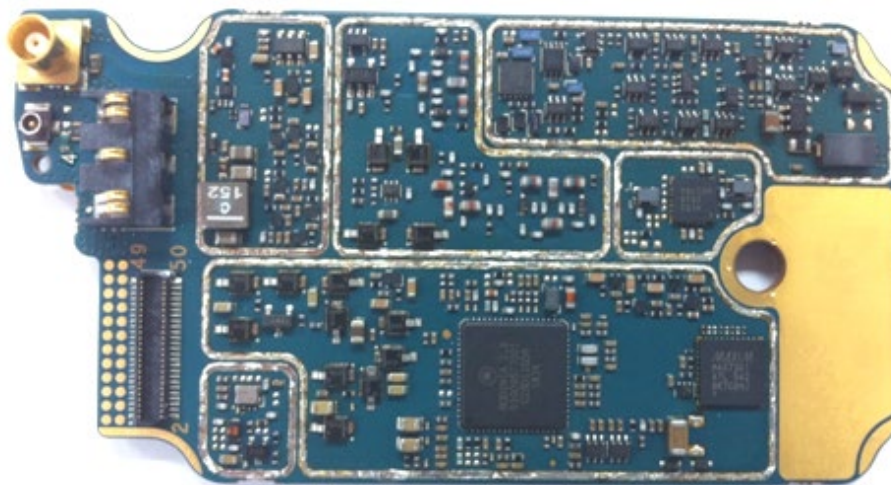
RF board without Shields (Top)  
(APX6000/APX5000/APX6000XE/APX6000Li)

**Exhibit 9C**



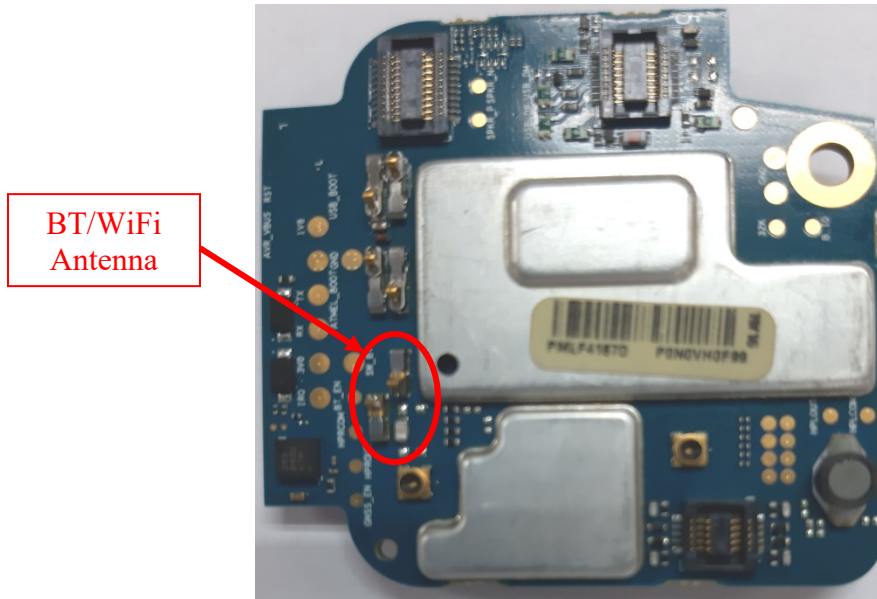
RF board with Shields (Bottom)  
(APX6000/APX5000/APX6000XE/APX6000Li)

**Exhibit 9D**



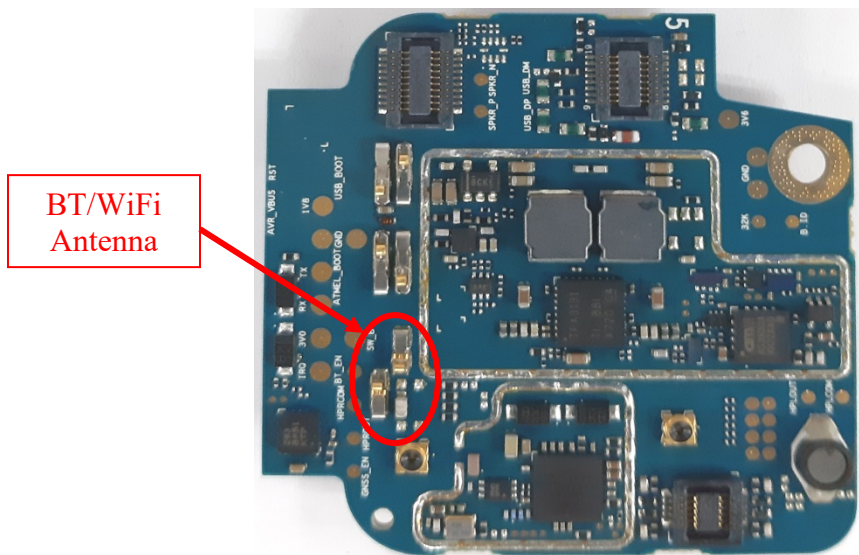
RF board without Shields (Bottom)  
(APX6000/APX5000/APX6000XE/APX6000Li)

**Exhibit 9E**



Expansion board with shields (Top)  
(APX6000/APX5000/APX6000XE/APX6000Li)

**Exhibit 9F**



Expansion board without shields (Top)  
(APX6000/APX5000/APX6000XE/APX6000Li)

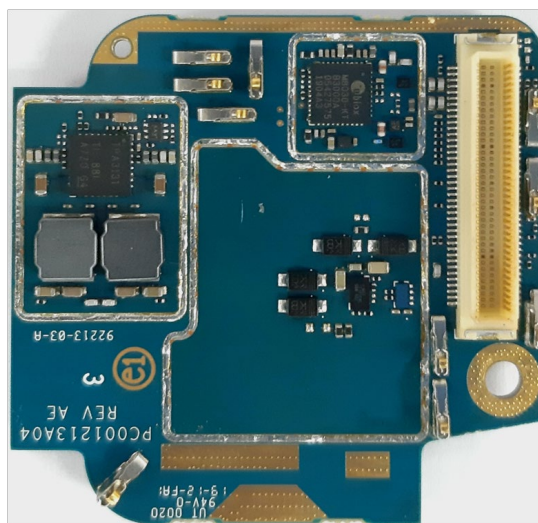


**Exhibit 9G**



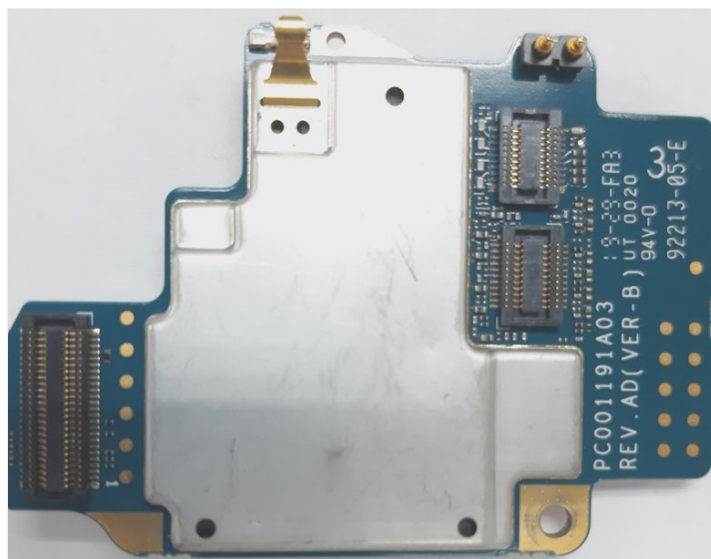
Expansion board with shields (Bottom)  
(APX6000/APX5000/APX6000XE/APX6000Li)

**Exhibit 9H**



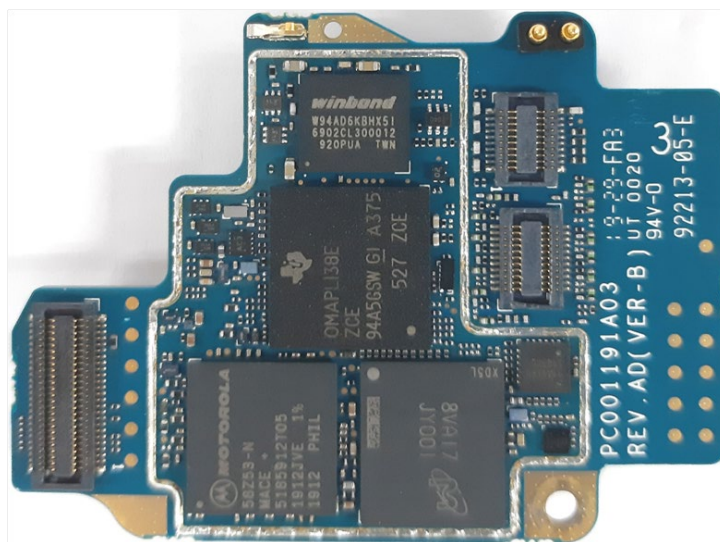
Expansion board without shields (Bottom)  
(APX6000/APX5000/APX6000XE/APX6000Li)

**Exhibit 9I**



Vocon board with shields (Top)  
(APX6000/APX5000/APX6000XE/APX6000Li)

**Exhibit 9J**



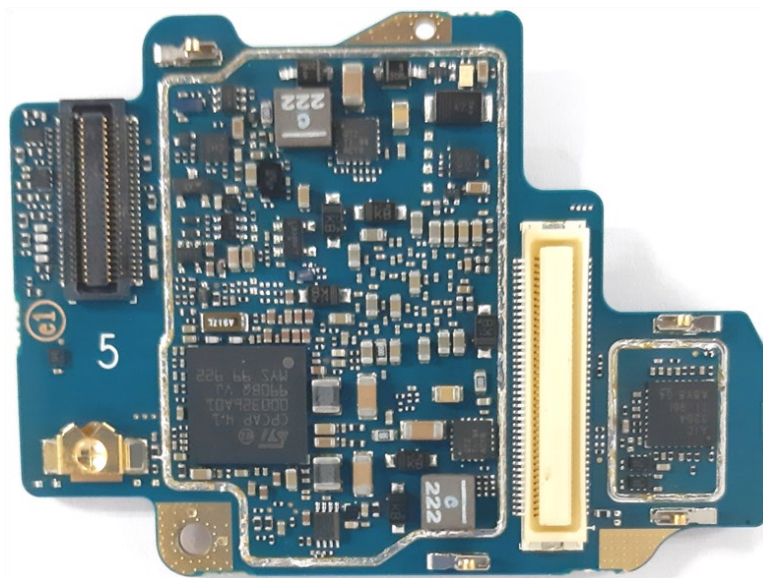
Vocon board without shields (Top)  
(APX6000/APX5000/APX6000XE/APX6000Li)

**Exhibit 9K**



Vocon board with shields (Bottom)  
(APX6000/APX5000/APX6000XE/APX6000Li)

**Exhibit 9L**



Vocon board without shields (Bottom)  
(APX6000/APX5000/APX6000XE/APX6000Li)



**Exhibit 9M**



RF and Vocon boards with chassis and housing of APX6000/APX6000Li/APX5000 Model 1.5 (Front side)



**Exhibit 9N**



Expansion board with chassis and housing of APX6000/APX6000Li/APX5000 Model 1.5 (Back side)

**Exhibit 9Q**



RF and Vocon boards with chassis and housing of APX6000/APX6000Li/APX5000 Model 2.5 (Front side)



**Exhibit 9P**



Expansion board with chassis and housing of APX6000/APX6000Li/APX5000 Model 2.5 (Back side)



**Exhibit 9Q**



RF and Vocon boards with chassis and housing of APX6000/APX6000Li/APX5000 Model 3.5 (Front side)

**Exhibit 9R**



Expansion board with chassis and housing of APX6000/APX6000Li/APX5000 Model 3.5 (Back side)

**Exhibit 9S**



RF and Vocon boards with chassis and housing of APX6000XE Model 1.5 (Front side)



**Exhibit 9T**



Expansion board with chassis and housing of APX6000XE Model 1.5 (Back side)

**Exhibit 9U**



RF and Vocon boards with chassis and housing of APX6000XE Model 2.5 (Front side)

**Exhibit 9V**



Expansion board with chassis and housing of APX6000XE Model 2.5 (Back side)



**Exhibit 9W**



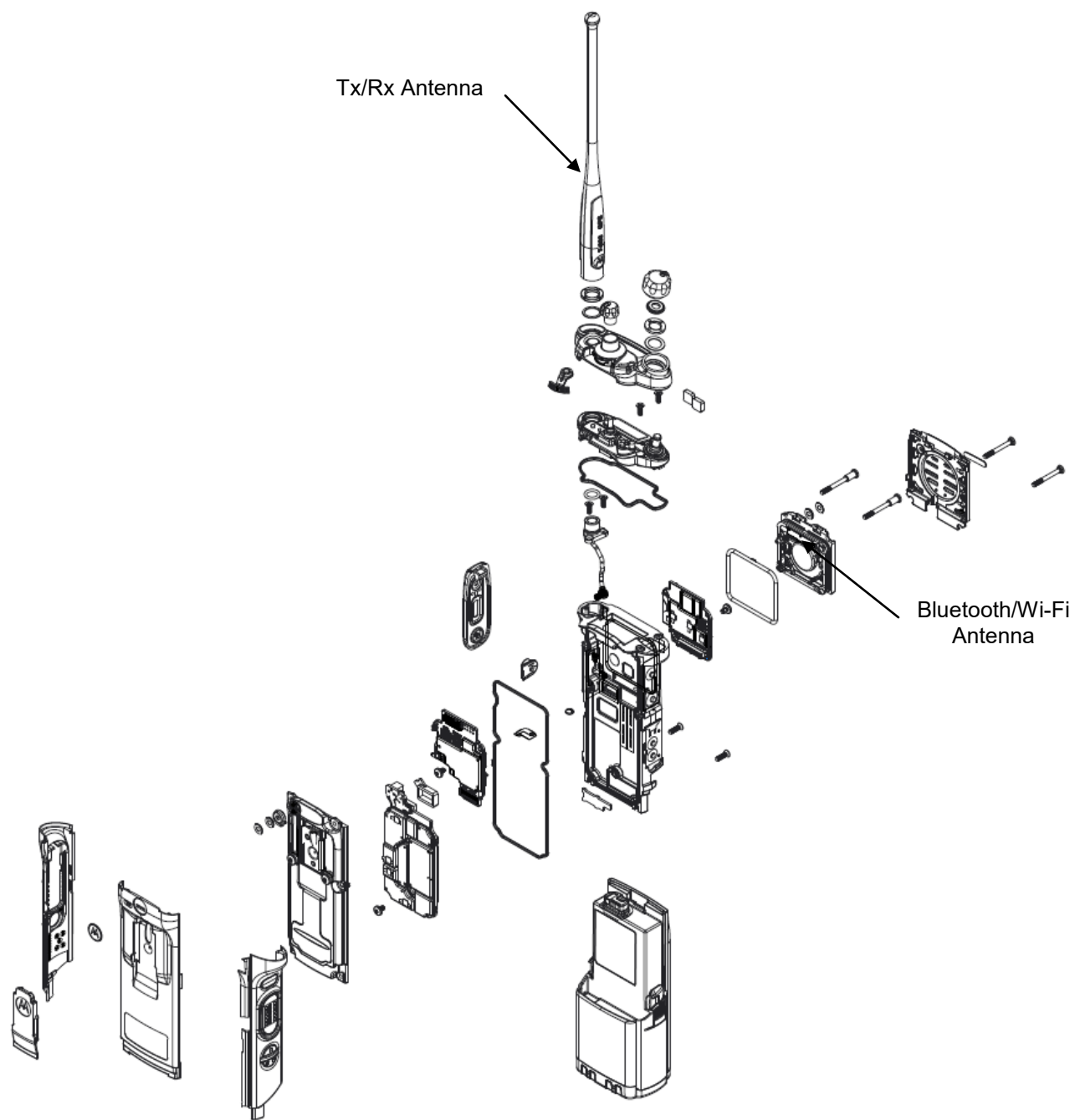
RF and Vocon boards with chassis and housing of APX6000XE Model 3.5 (Front side)

**Exhibit 9X**



Expansion board with chassis and housing of APX6000XE Model 3.5 (Back side)

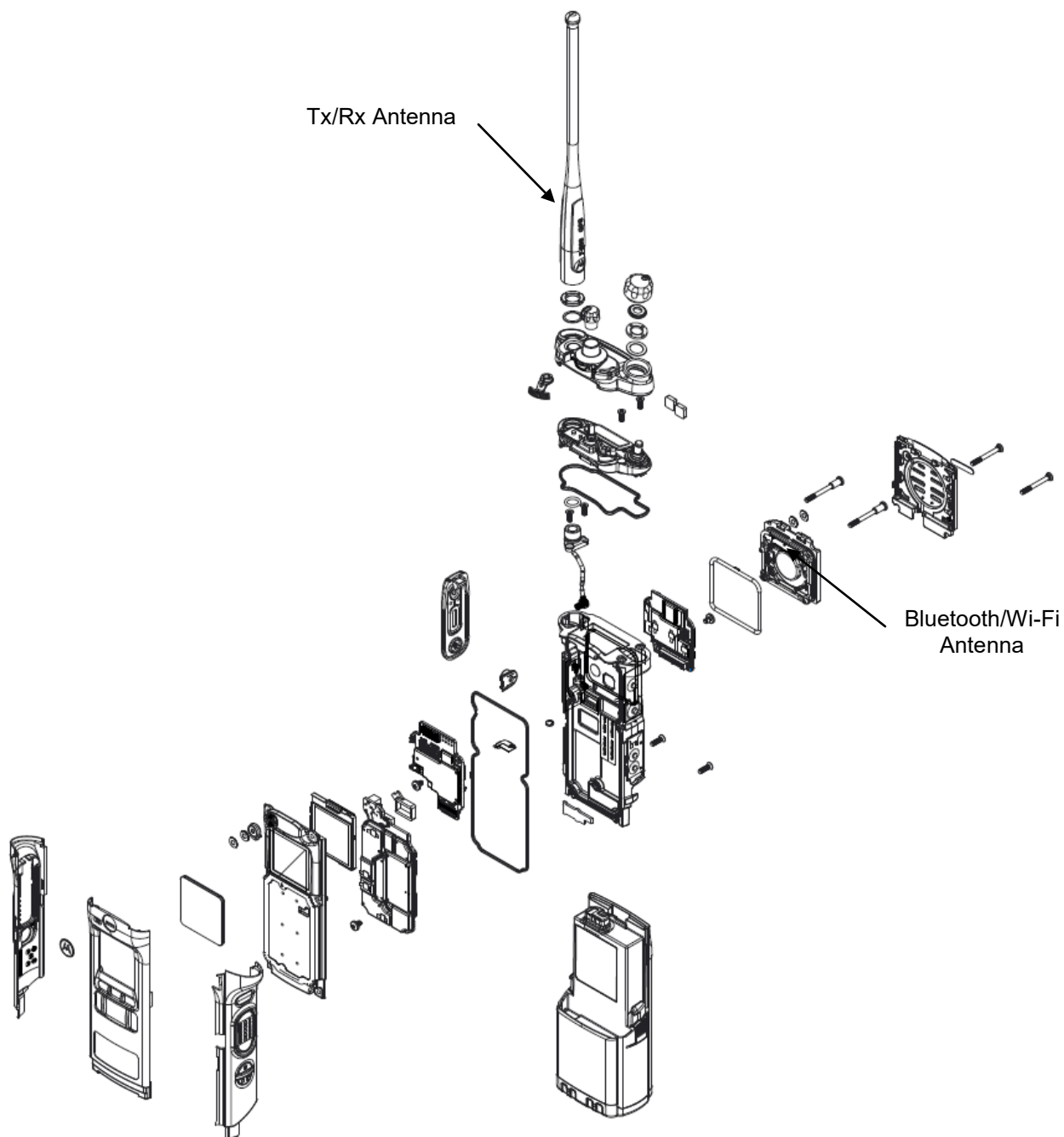
**Exhibit 9Y**



Exploded view of APX6000/ APX6000Li/APX5000 Model 1.5

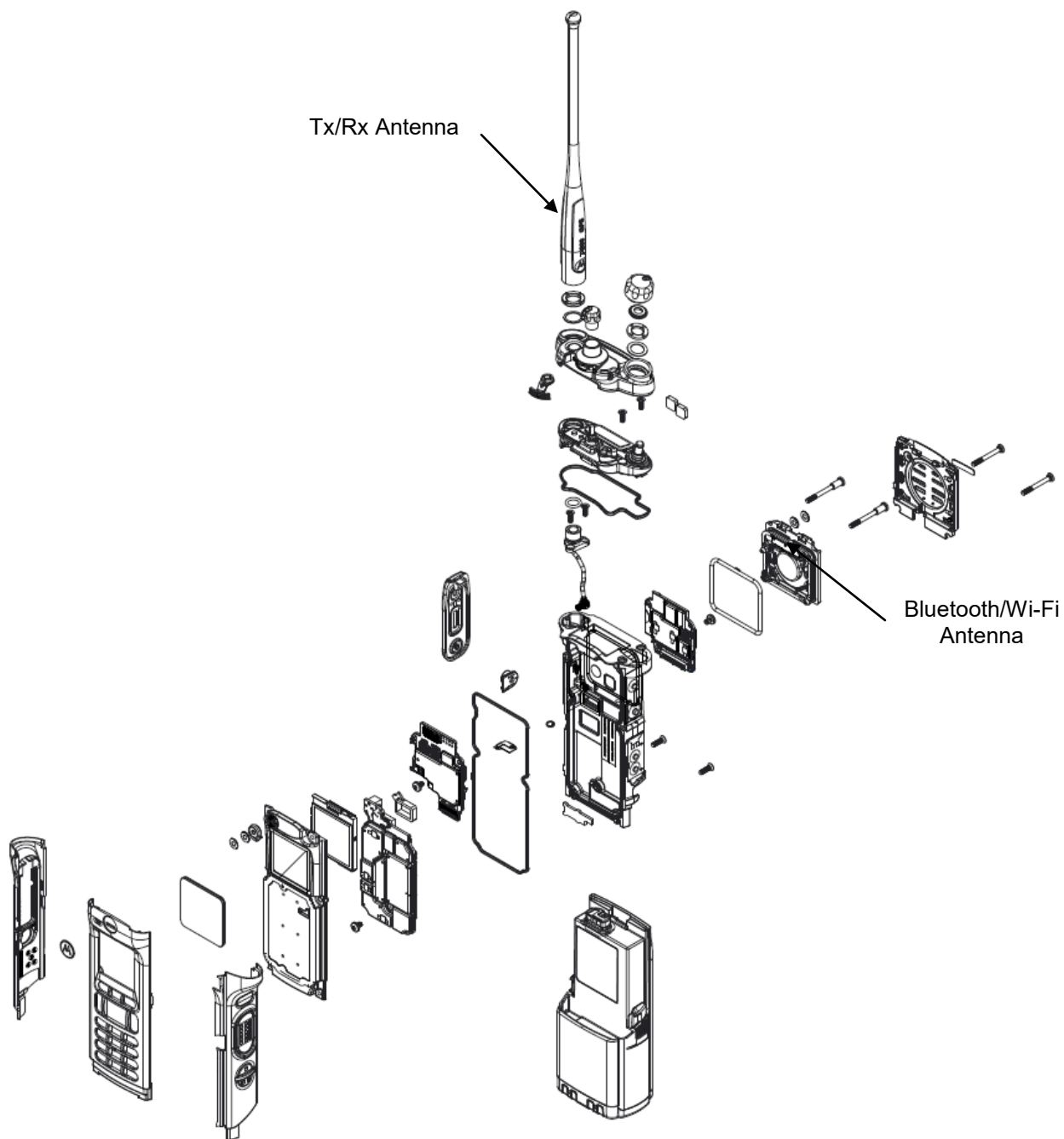


**Exhibit 9Z**



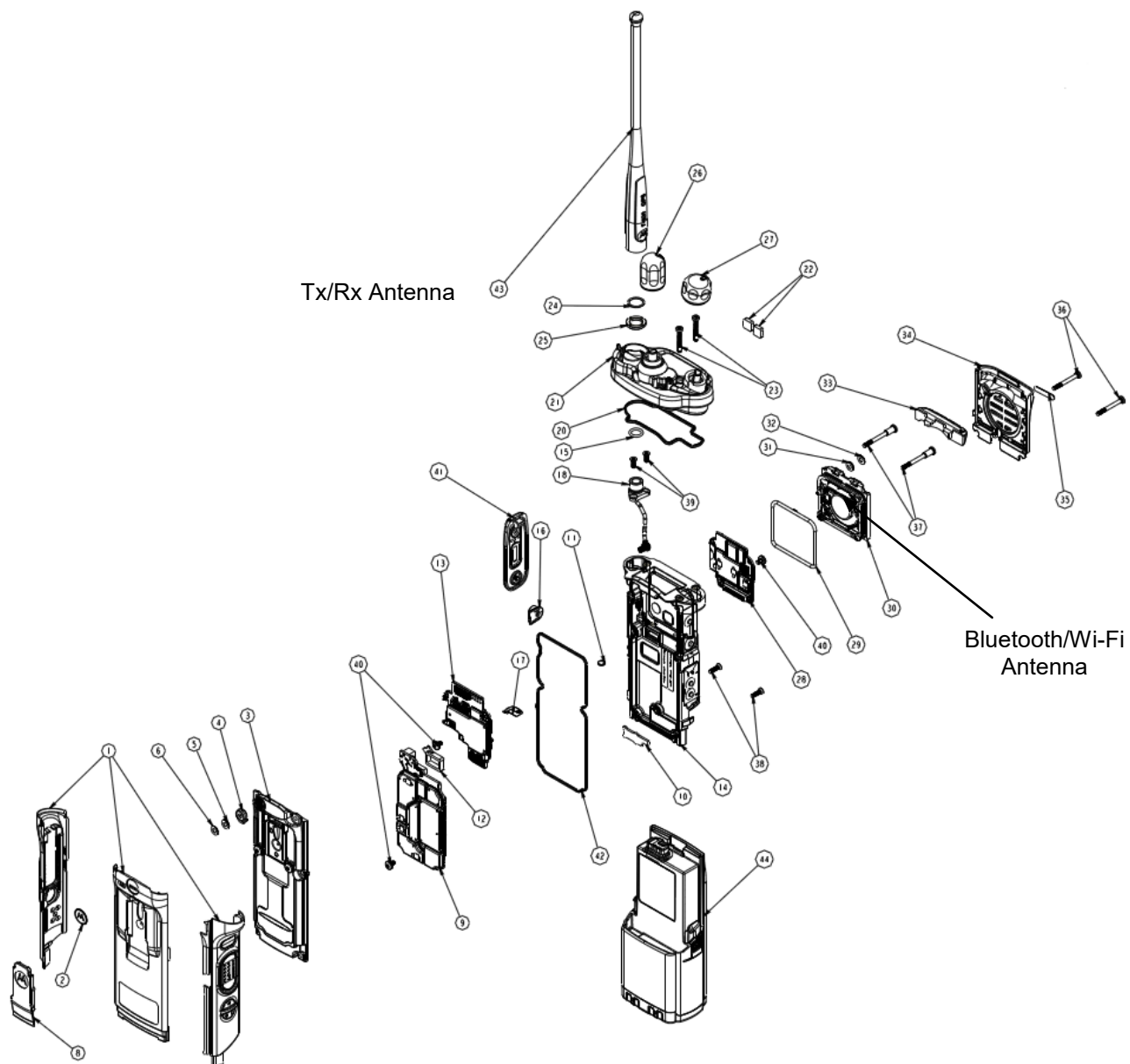
Exploded view of APX6000/APX6000Li/APX5000 Model 2.5

**Exhibit 9AA**



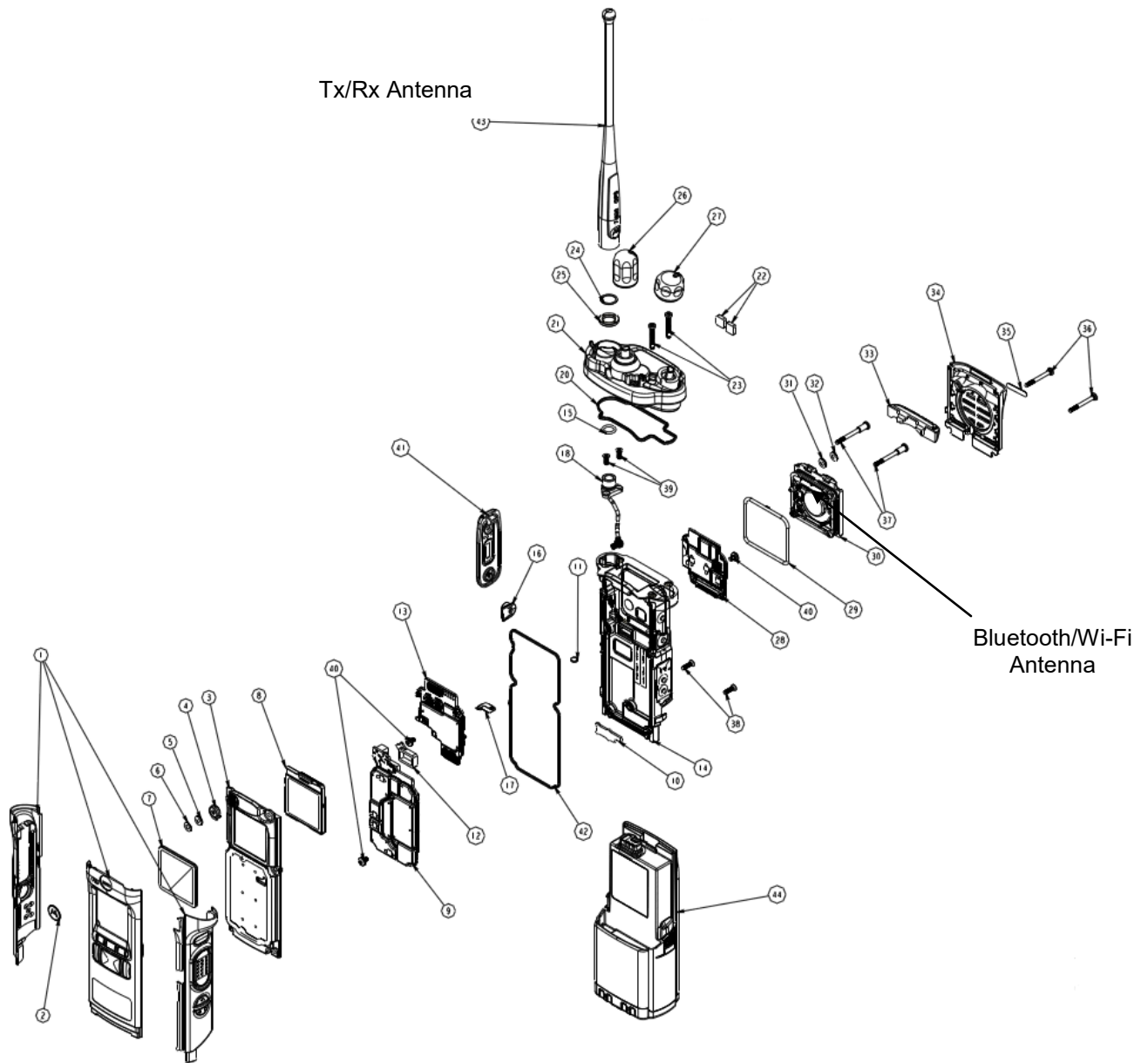
Exploded view of APX6000/ APX6000Li/APX5000 Model 3.5

**Exhibit 9AB**



Exploded view of APX6000XE Model 1.5

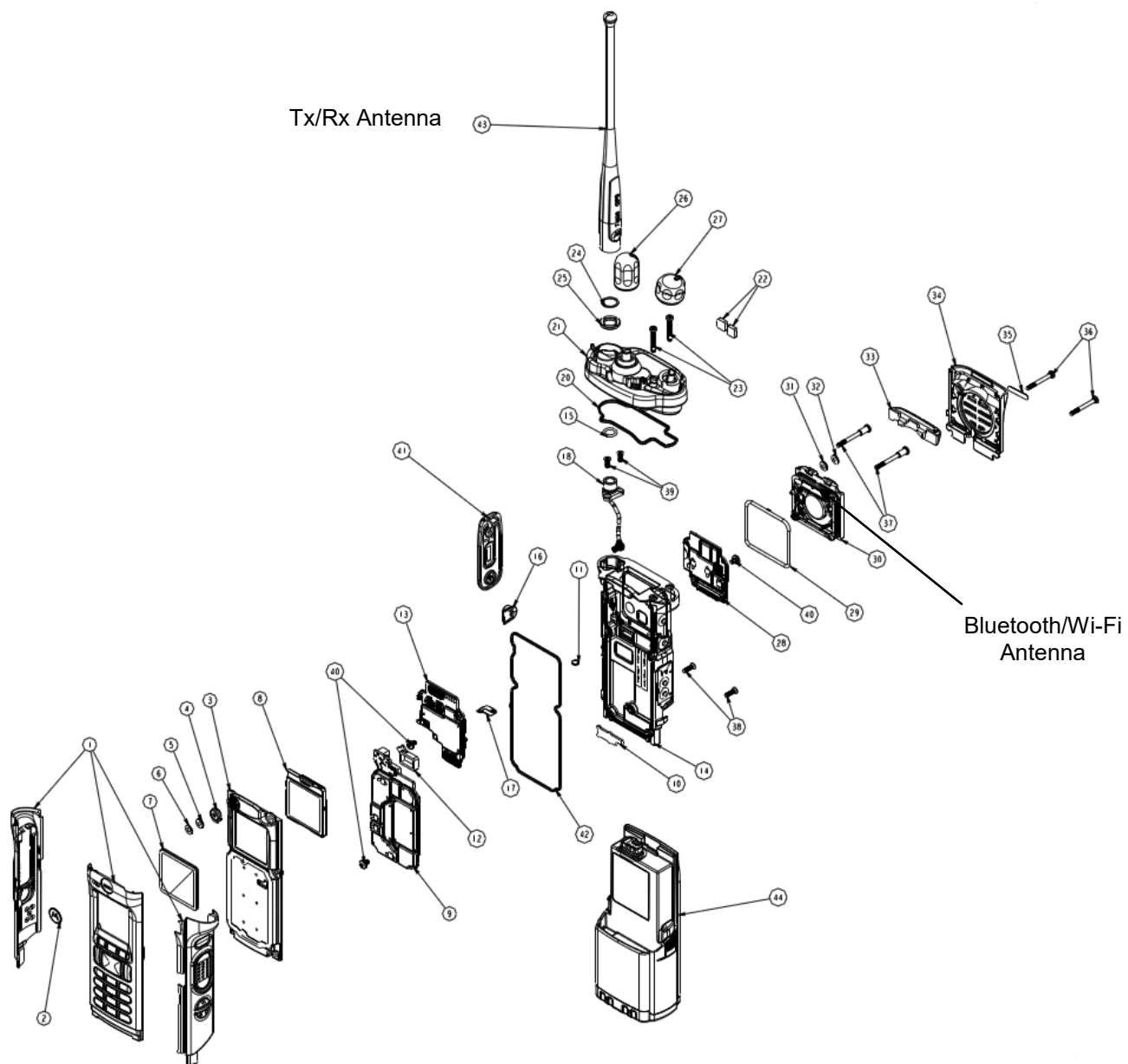
**Exhibit 9AC**



Exploded view of APX6000XE Model 2.5



**Exhibit 9AD**



Exploded view of APX6000XE Model 3.5