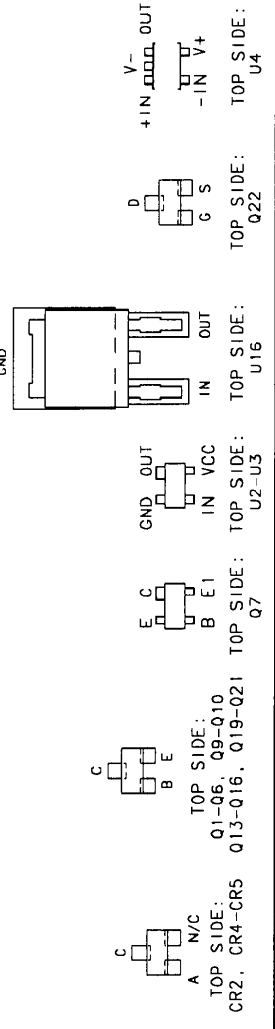


NOTES FOR SHEET 1:

1. PRIOR TO POST COATING BOTH SIDES OF P.C. BOARD WITH KPN 016-01040-0000. MASK OFF THE FOLLOWING:  
 MTG 1 THRU MTG 8 (BOTH SIDES), TP1 THRU TP8, C4, C151, C18, C19, L24, L25, T2 THRU T6, P4, R156, R157, R217 AND FL1. FENCES AND COVER TO BE FREE OF POST COATING (BOTH SIDES).
2. SEE SHEET 3 FOR ASSEMBLY OF FENCES, SHIELDS, COVERS, AND SCREWS.
3. NOTE DELETED.
4. L17, L18, C147, AND C146 ARE IMPEDANCE MATCHING ELEMENTS FOR Q8 INPUT AND Q7 INPUT AND OUTPUT. THEY ARE POSITION SENSITIVE AND ARE SHOWN IN THEIR NOMINAL POSITIONS. DIFFERING LOTS OF Q7 AND Q8 MAY REQUIRE CHANGES TO THESE NOMINAL POSITIONS.
5. PLACE FL1 INTO SLOTS ON PCB AND SLIDE DOWN TOWARD EDGE OF BOARD AWAY FROM C26. SOLDER IN PLACE. LOCATOR TABS ARE TO BE SOLDERED ON FAR SIDE OF PCB. A COMPLETE SOLDER SEAM IS REQUIRED BETWEEN FL1'S BRACKET AND PCB. (CARE SHOULD BE USED NOT TO BUILD UP SOLDER ON BRACKET NEAR FENCE 047-09585-0001). USING BUS WIRE (026-00029-0000) CONNECT INPUT AND OUTPUT OF FL1 TO PCB.
6. NOTE DELETED.
7. NOTE DELETED.
8. NOTE DELETED.
9. FILL ALL GROUND VIAS WITH SOLDER THIS AREA.
10. NOTE DELETED.
11. NOTE DELETED.
12. PRINTED CIRCUIT ASSEMBLY IDENTIFICATION MUST BE IN ACCORDANCE WITH SPEC. 001-01101-0000.
13. WHERE APPLICABLE, LIQUID STAKE ALL FASTENERS PER SPEC. 001-01080-0000.
14. INSTALL C.J1, C.J2 AND C.J3 ON FAR SIDE OF BOARD.

THIS DRAWING IS NOT COMPLETE WITHOUT PARTS LIST 200-08273-0020

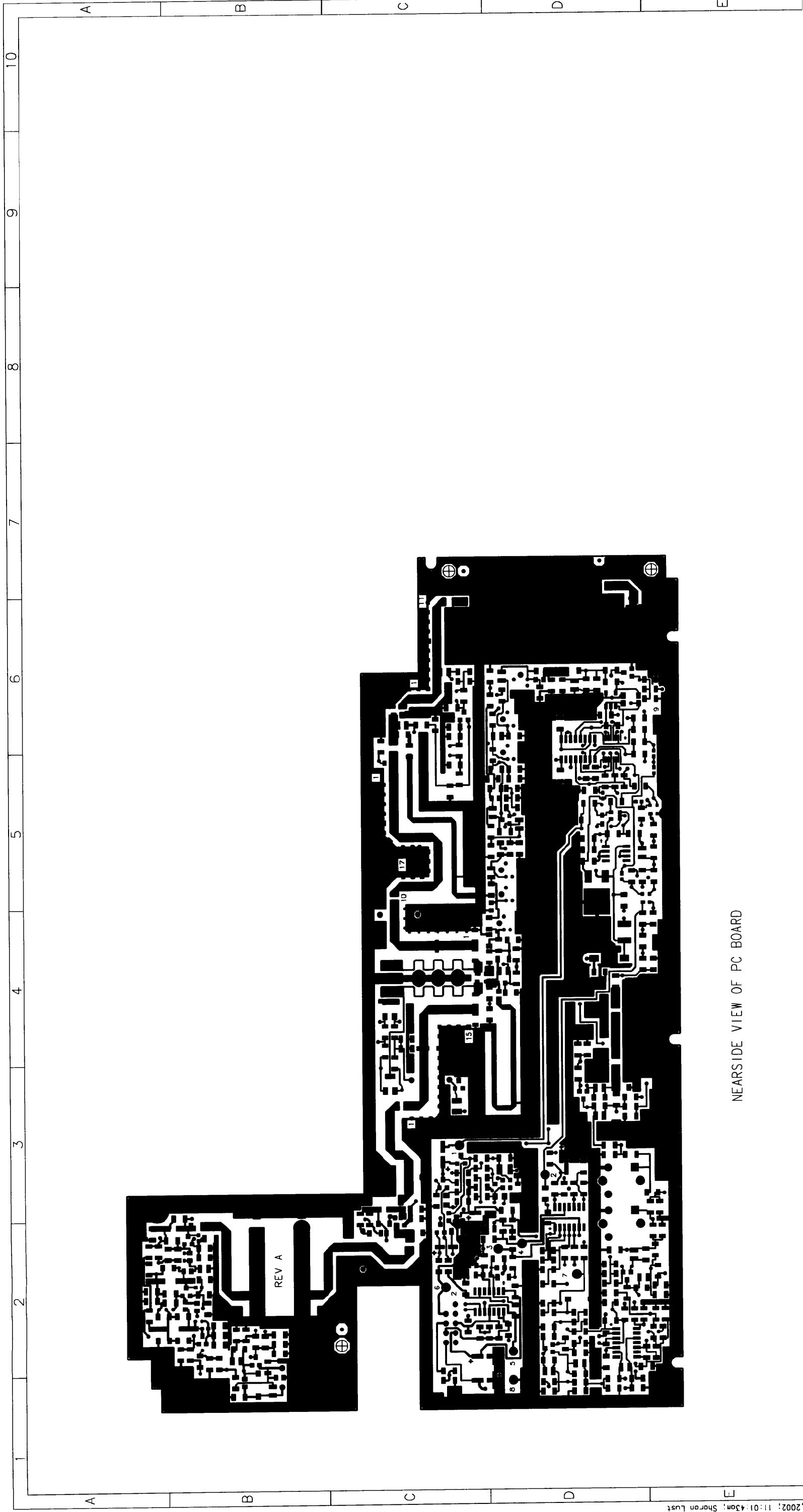
NEXT ASSY.		UNIT	
KT 73			
REV	DATE	REV	DATE
1	17/00	1	17/00
2	09/02	2	09/02
3	07/02	3	07/02
4	04/02	4	04/02
5	02/01	5	02/01



Proprietary Notice  
 This document and all information contained herein are the property of Honeywell International Inc. and are provided in confidence, and may not be used, duplicated or disclosed to a third party, in whole or in part, without the prior written permission of Honeywell International Inc. Copyright 2000-2002 Honeywell International Inc. All rights reserved.

SHEET 3 OF 3 MAINTAINED ON VENDOR BY CVA DEPT.  
 SHEET 3 OF 3 MAINTAINED ON RVE BY ECO DEPT.

SIZE	D	Honeywell International Inc
ELEC ENG		Olathe, Kansas USA
DATE	17/00	CAGE 22273
NAME		RECEIVER BOARD
TOL.	UNLESS NOTED OTHERWISE	
XX1	INCHES	
XX2	0.10 INCHES	
XX3	0.010 INCHES	
ANGLES	UNLESS OTHERWISE SPECIFIED	



NEAR SIDE VIEW OF PC BOARD

MENTOR GRAPHICS DRAWING: TO BE MAINTAINED BY P. C. DESIGN

REV	1	2	3	4	5	6	7	8	9	10
DATE	12/00									
BY	KNOTT									
SIZE	D	Honeywell International Inc Olathe, Kansas USA CAGE: 22373								
TELEC. ENG.		NAME								
MECH. ENG.		RECEIVER BOARD								
TOOL. UNLESS NOTED		DRAWN BY: JOD								
XX.1 # INCHES		DATE								
XX.2 .010 INCHES		P/W RANGE								
ANGLES: #		NONE								
DOCUMENT NUMBER	300-08273-0020									
SHT 2	of 3									

