

6. PHOTOGRAPHS

6.1. Photos of Powerline Conducted Measurement

Test Mode 1~2 & 7~8 : Cable: D-Sub or DVI, Adapter: Delta, Panel Angle-0°



FRONT VIEW OF CONDUCTED TEST



BACK VIEW OF CONDUCTED TEST

Test Mode 3~6 : Cable: D-Sub, Adapter: Delta or LSE, Panel Angle-90°



FRONT VIEW OF CONDUCTED TEST

6.2. Photos of Radiated Measurement at Open Field Test Site

Test Mode 1~ 4 : Cable: D-Sub or DVI, Adapter: Delta, Panel Angle-0°



FRONT VIEW OF RADIATED TEST



FRONT VIEW OF RADIATED TEST

Test Mode 5~8 : Cable: DVI, Adapter: Delta or LSE, Panel Angle-90°

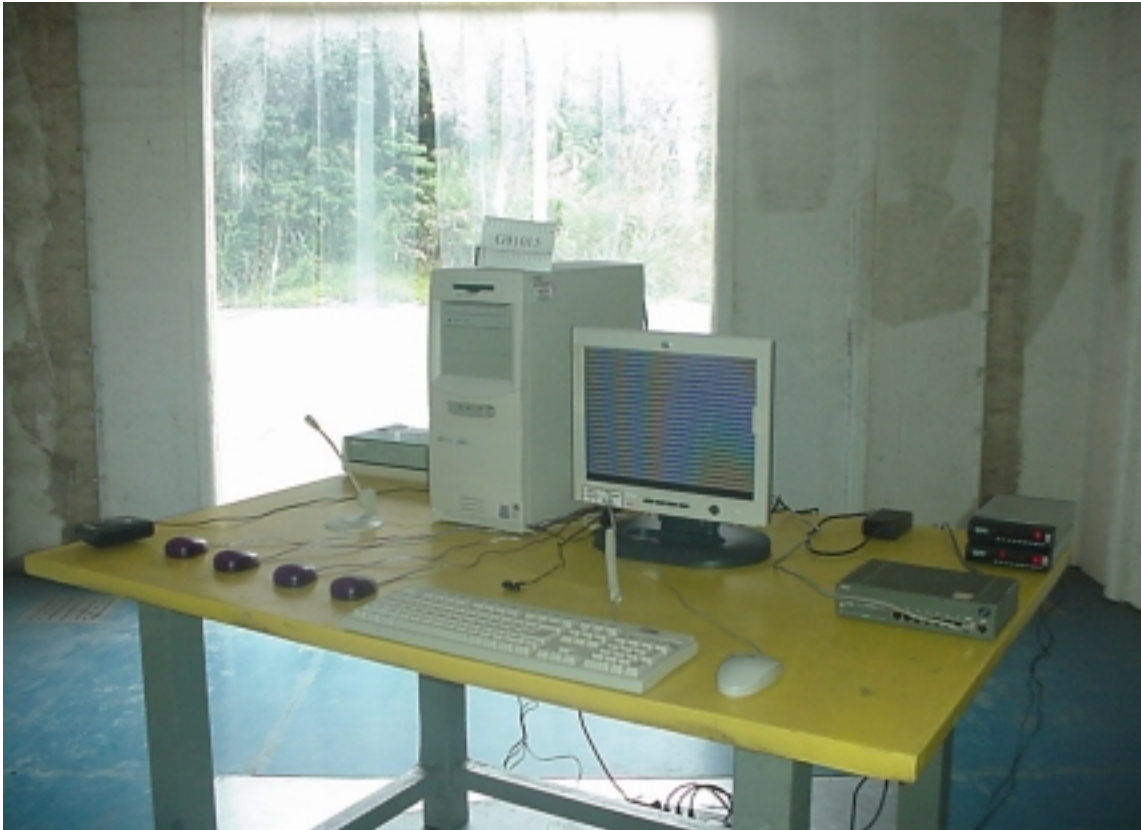


FRONT VIEW OF RADIATED TEST



FRONT VIEW OF RADIATED TEST

Test Mode 3 : 800*600/75Hz, 48kHz, Cable: DVI, Adapter: Delta, Panel Angle-0°



SETUP WITH MAXIMUM DETECTED EMISSION AT HORIZONTAL POLARIZATION



SETUP WITH MAXIMUM DETECTED EMISSION AT VERTICAL POLARIZATION

Test Mode 5 : 800*600/75Hz, 48kHz, Cable: DVI, Adapter: Delta, Panel Angle-90°



SETUP WITH MAXIMUM DETECTED EMISSION AT HORIZONTAL POLARIZATION



SETUP WITH MAXIMUM DETECTED EMISSION AT VERTICAL POLARIZATION