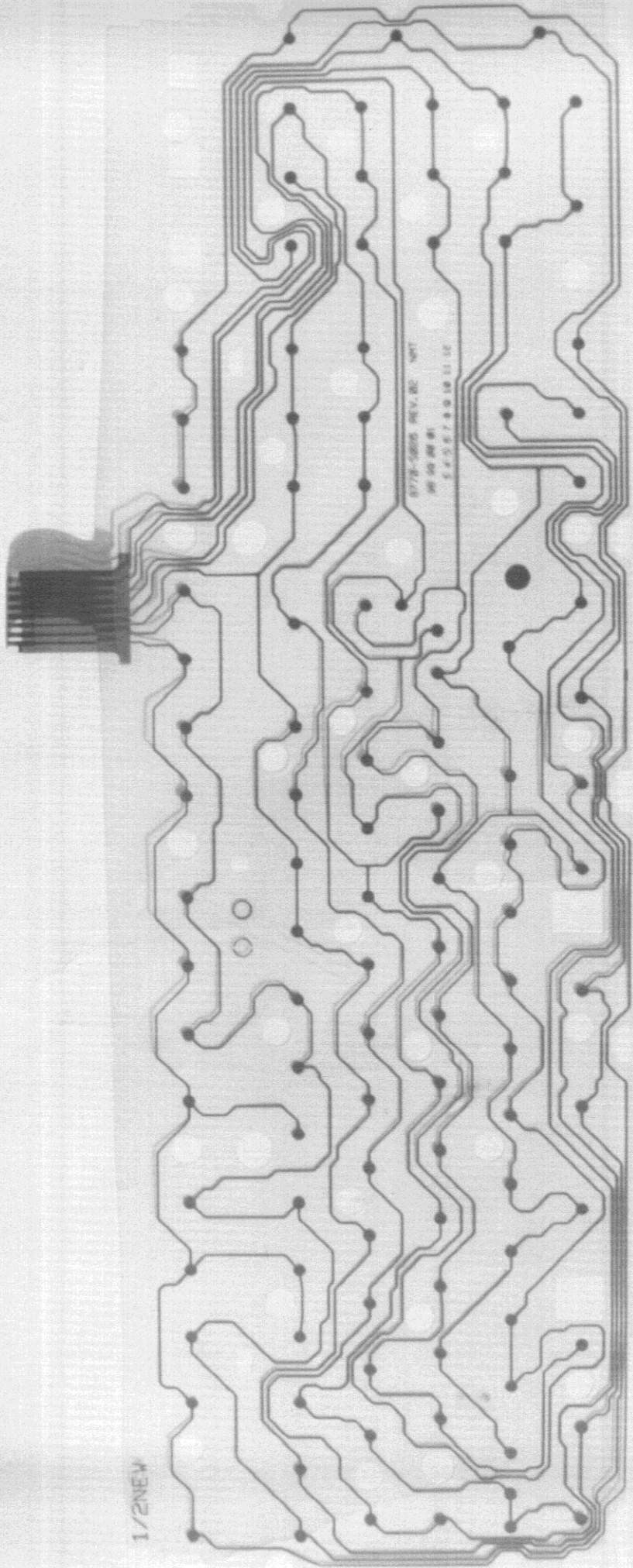
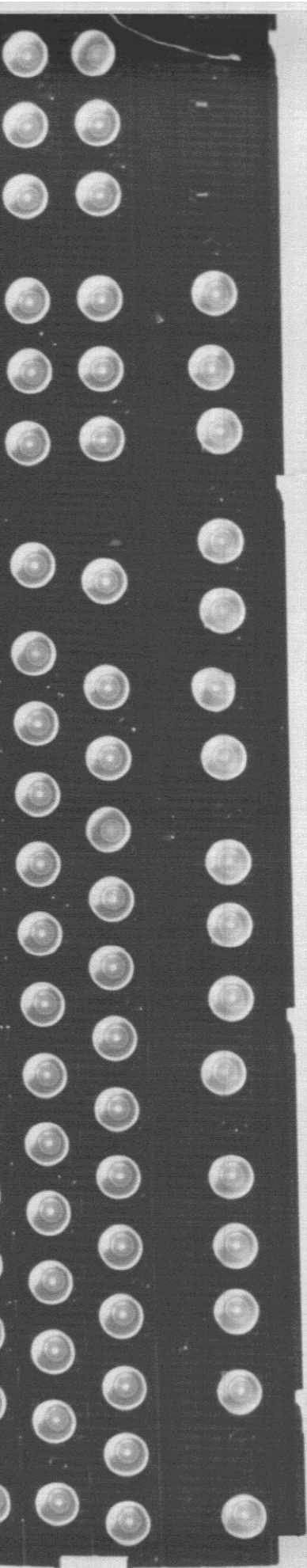
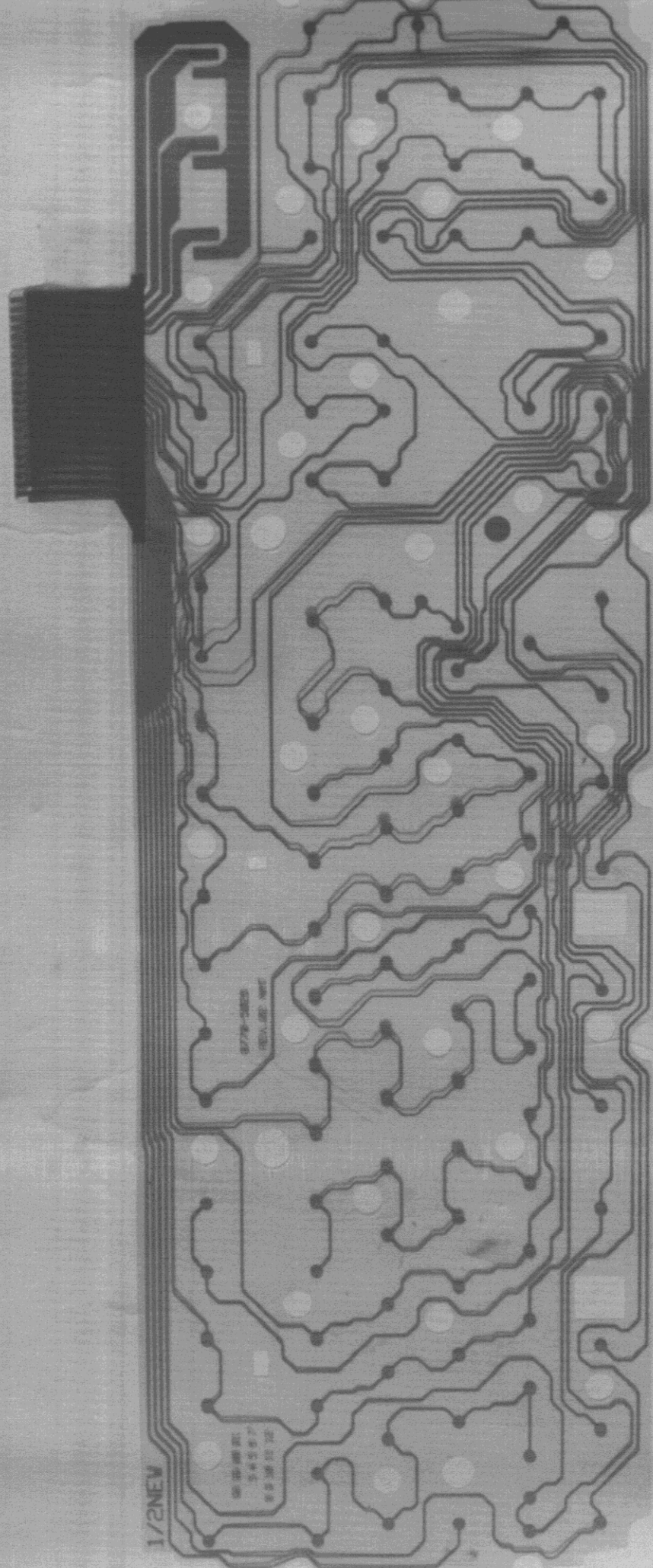


1585



1/778-78805 REV. B2 NPT
08 08 81
5 4 5 6 7 8 9 10 11 12

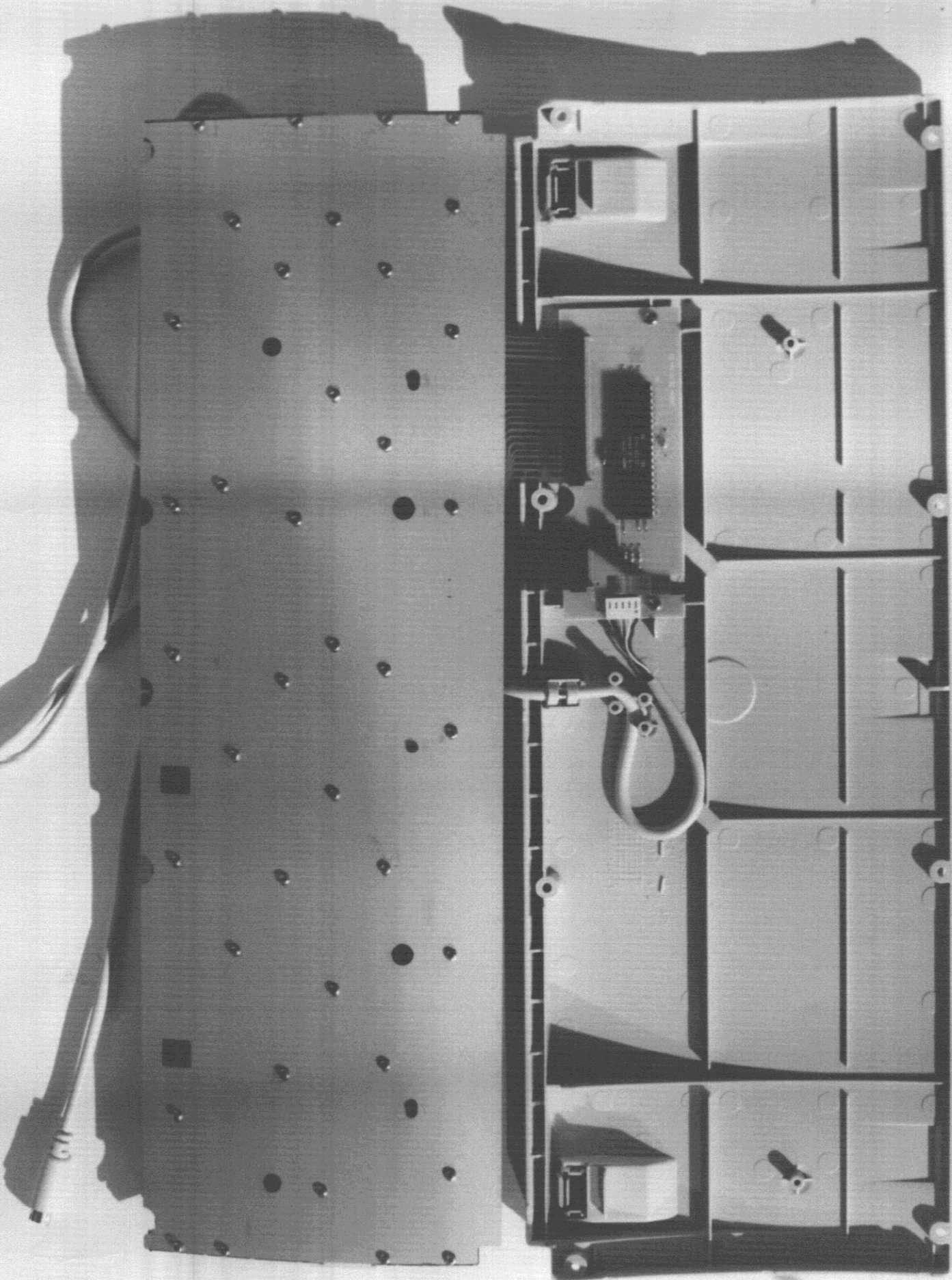
1/2NEW

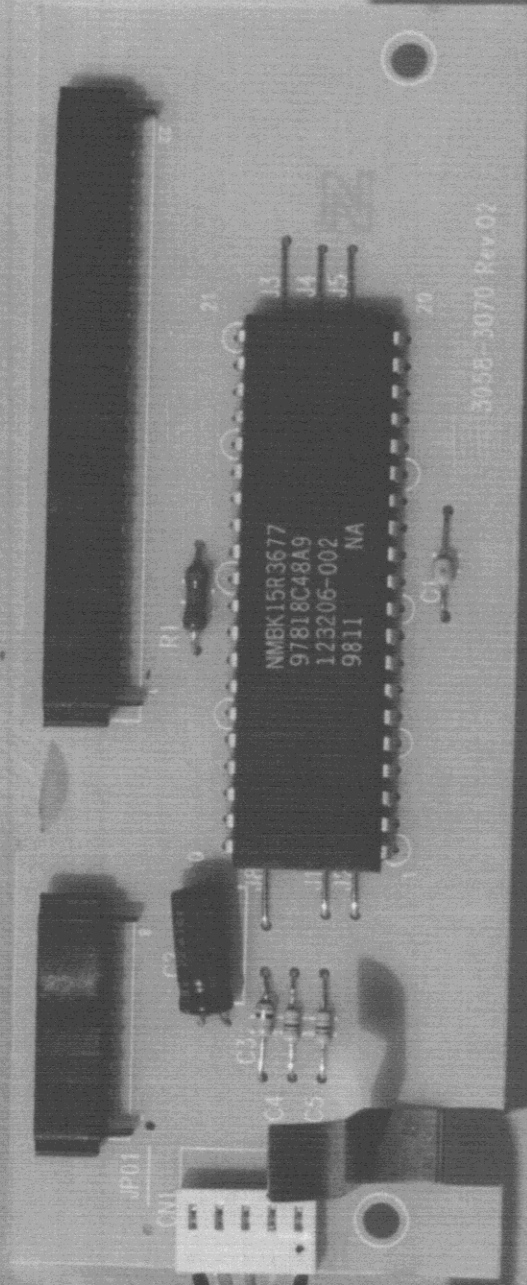


1/2NEV

9779-2825
REVISED 1962

08 10 1962
3 4 5 6 7
0 2 3 4 5 6 7





MMBK15R3677
97818C48A9
123206-002
9811 NA

3058-3070 Rev 02

JP01

OM

C2

C3

C4

C5

R1

21

13

14

15

20

C1

