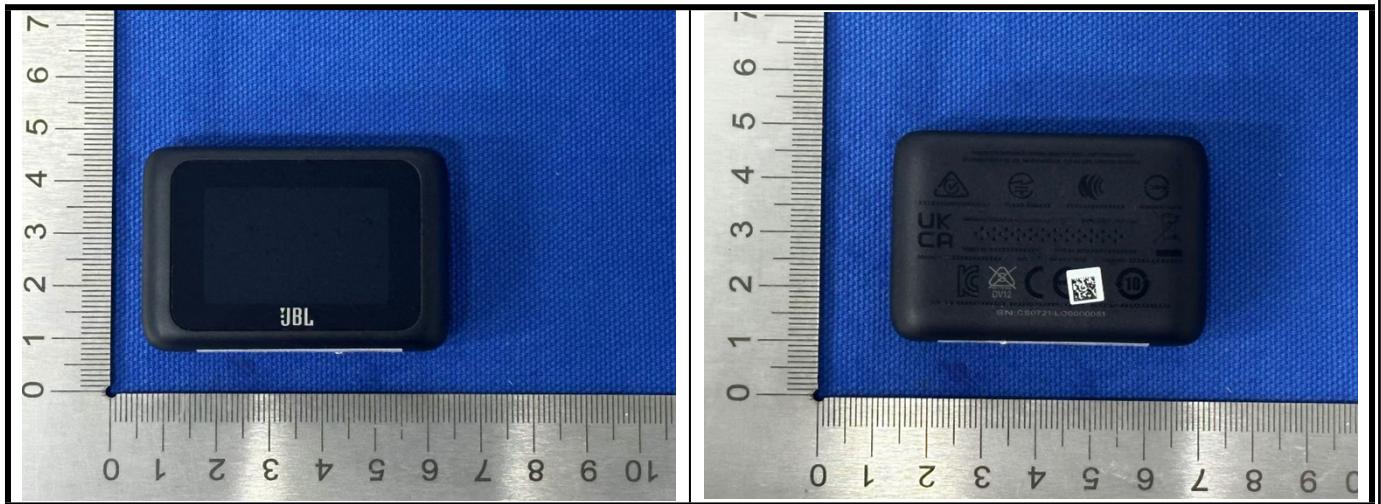
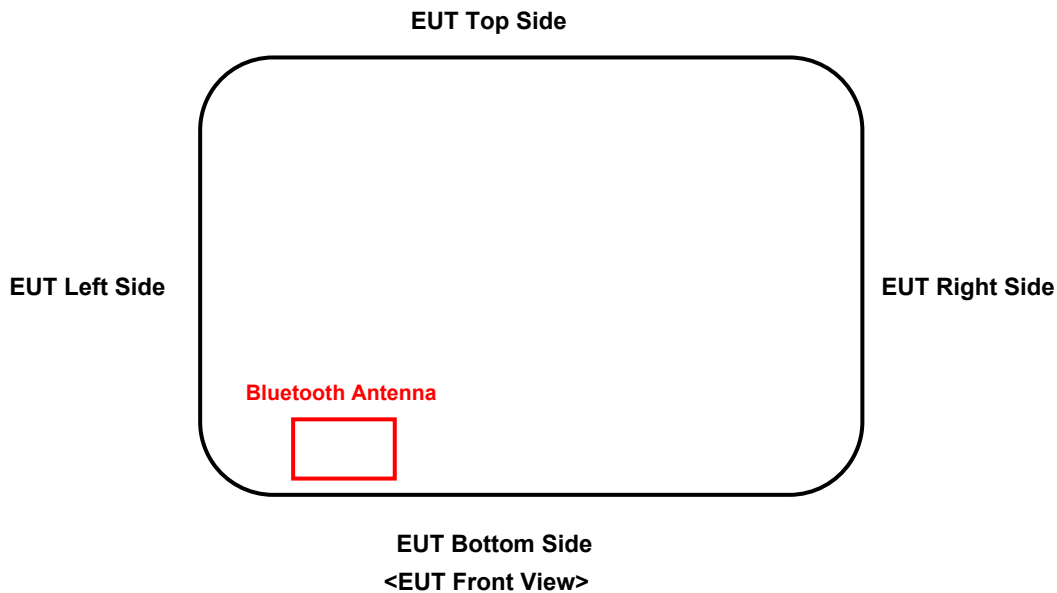


Photographs of EUT>



<Antenna Location>



The separation distance for antenna to edge:

Antenna	To Left Side (mm)	To Right Side (mm)	To Top Side (mm)	To Bottom Side (mm)	To Front Side (mm)	To Rear Side (mm)
Bluetooth	15.01	42.68	35.09	3.43	14.36	2.13

<Photographs of SAR Setup>



Front Face of EUT with 0 cm Gap



Rear Face of EUT with 0 cm Gap



Left Side of EUT with 0 cm Gap



Bottom Side of EUT with 0 cm Gap