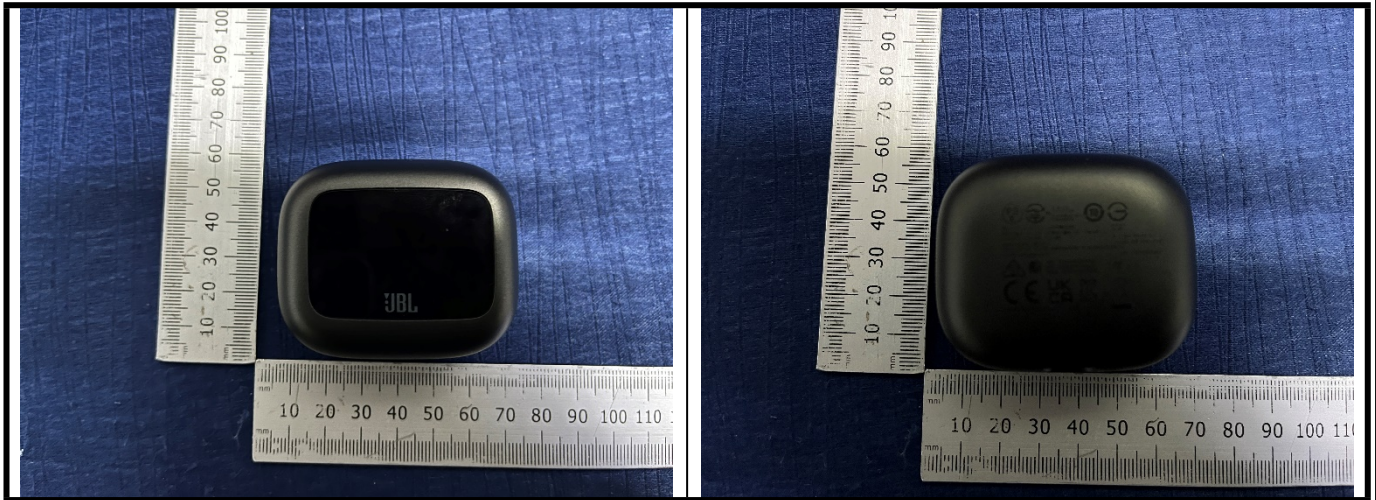
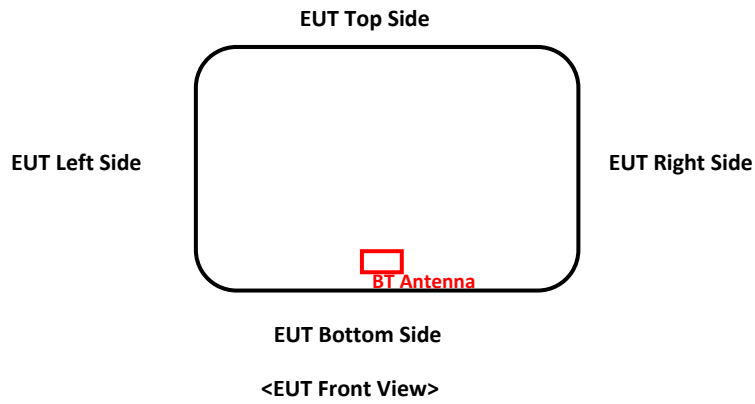


Photographs of EUT>



<Antenna Location>



The separation distance for antenna to edge:

Antenna	To Left Side (mm)	To Right Side (mm)	To Top Side (mm)	To Bottom Side (mm)
BT Antenna	30	30	50	5

<Photographs of SAR Setup>



Front Face with 0 cm Gap



Rear Face with 0 cm Gap



Left Side with 0 cm Gap



Right Side with 0 cm Gap



Top Side with 0 cm Gap



Bottom Side with 0 cm Gap