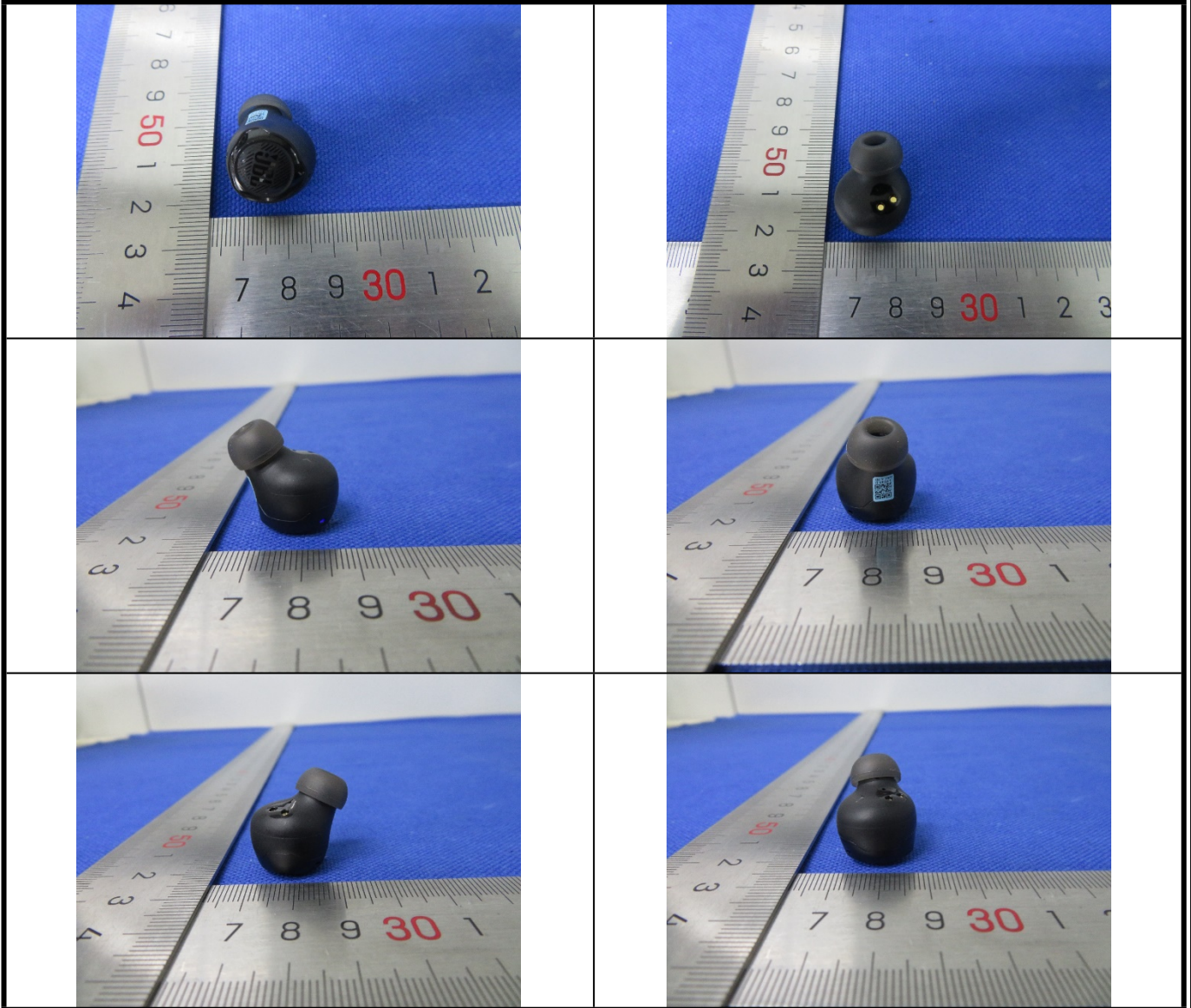
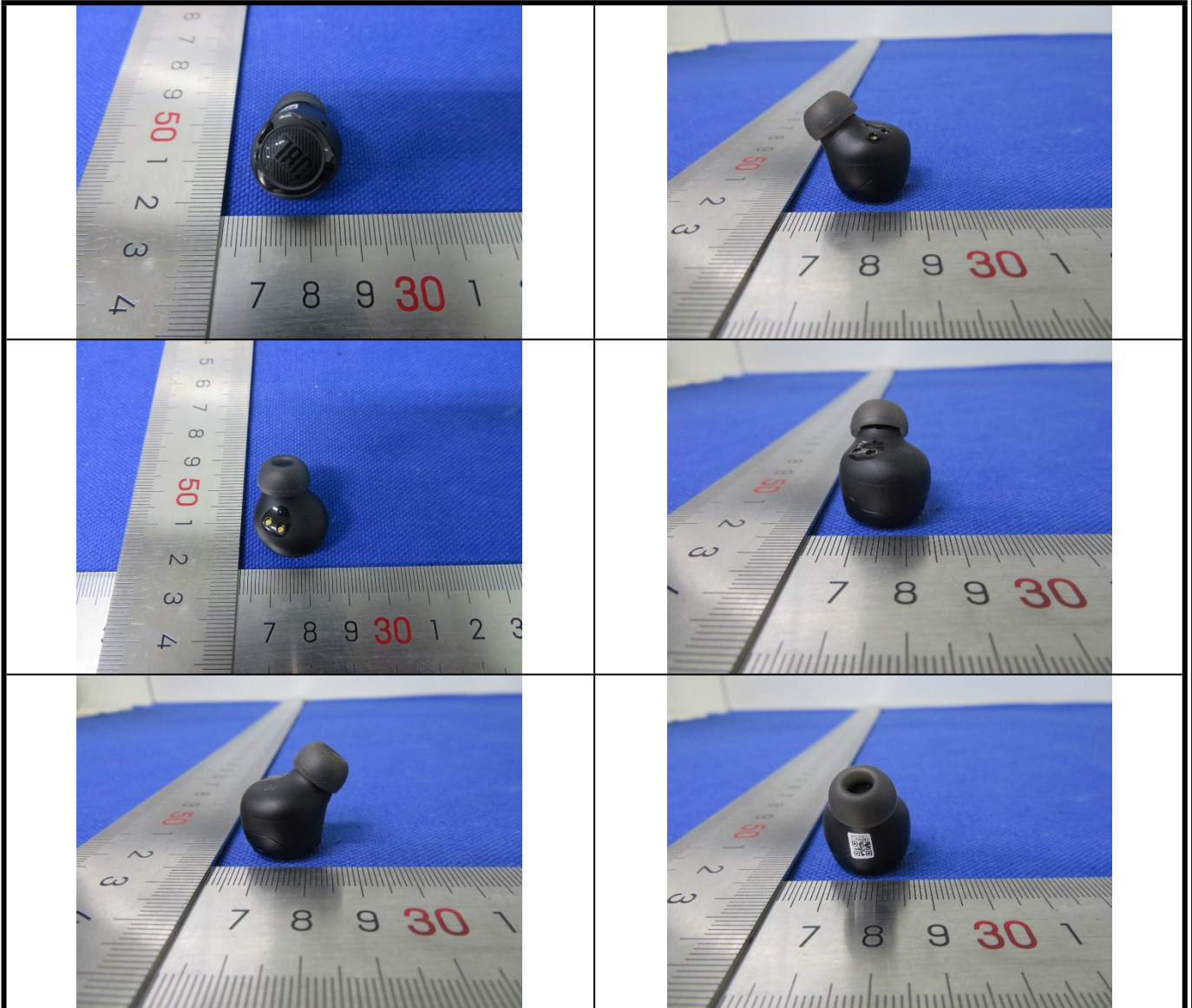


Photographs of EUT>

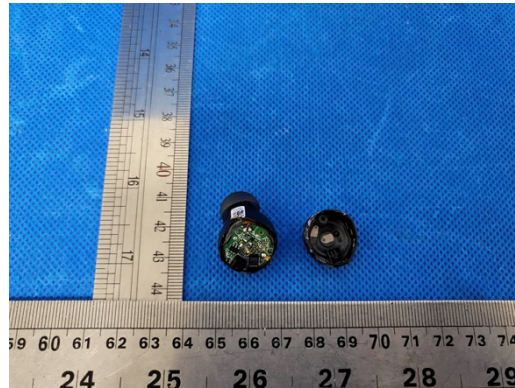
For Left earbud



For Right earbud



<Antenna Location>



The separation distance for antenna to edge:

Antenna	To Front Side (mm)	To Rear Side (mm)	To Top Side (mm)	To Bottom Side (mm)	To Left Side (mm)	To Right Side (mm)
BT	0	0	0	23.8	0	0

<Photographs of SAR Setup>

For Left earbud



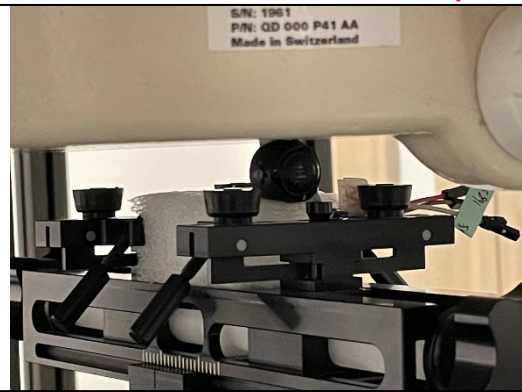
Front Face of EUT with 0 cm Gap



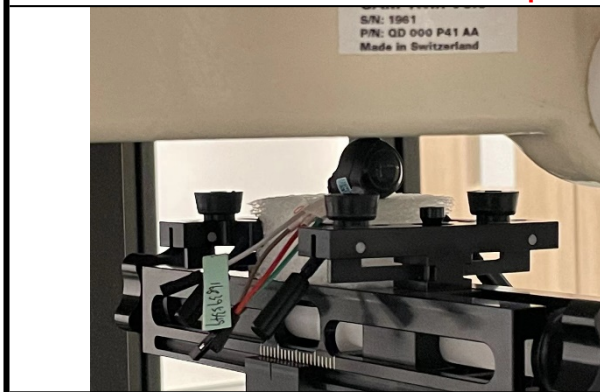
Rear Face of EUT with 0 cm Gap



Left Side of EUT with 0 cm Gap



Right Side of EUT with 0 cm Gap



Top Side of EUT with 0 cm Gap



Bottom Side of EUT with 0 cm Gap

For Right earbud



Front Face of EUT with 0 cm Gap



Rear Face of EUT with 0 cm Gap



Left Side of EUT with 0 cm Gap



Right Side of EUT with 0 cm Gap



Top Side of EUT with 0 cm Gap



Bottom Side of EUT with 0 cm Gap