

# Antenna Test Report

Customer	巨大	Project	哈曼---Bixby
Report Version	V6.0	Report Date	2023-03-08
Prepared by	沈川	Checked by	张磊



# 无源波形图

## WIFI 0



# 天线无源效率:

## WIFI 0 无源效率

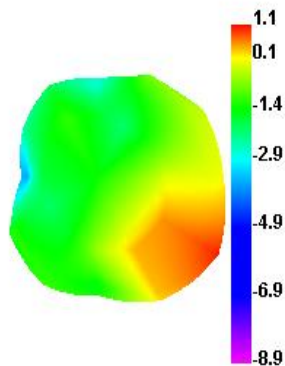
	Efficiency (%)	Efficiency (dB)	Gain (dBi)
2400	47.47	-3.24	1.29
2450	48.74	-3.12	1.22
2500	47.95	-3.19	1.37
5150	48.14	-3.17	2.16
5300	48.29	-3.16	2.46
5500	49.37	-3.07	2.53
5700	48.34	-3.16	2.85
5850	47.88	-3.20	2.78



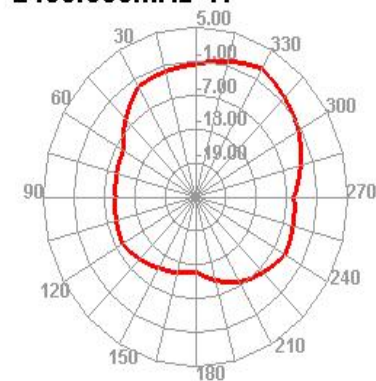
# 天线无源效率场形图:

## WIFI 0 无源效率场形图

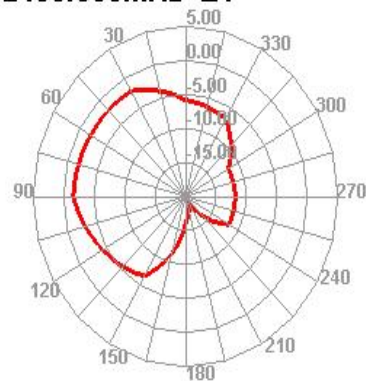
2450.000MHz



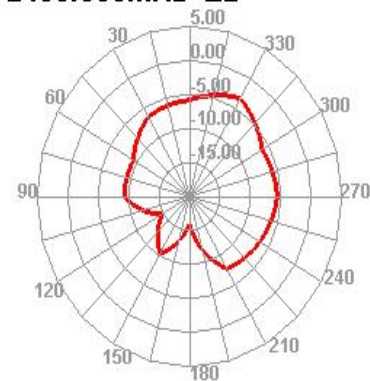
2450.000MHz H



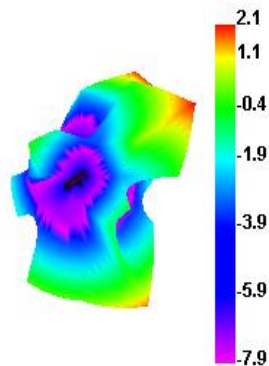
2450.000MHz E1



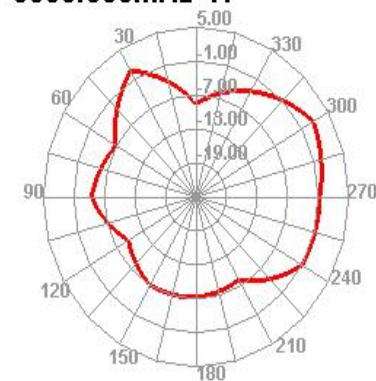
2450.000MHz E2



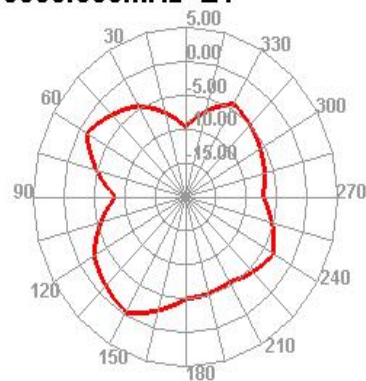
5500.000MHz



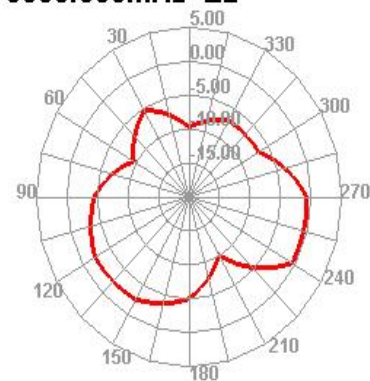
5500.000MHz H



5500.000MHz E1

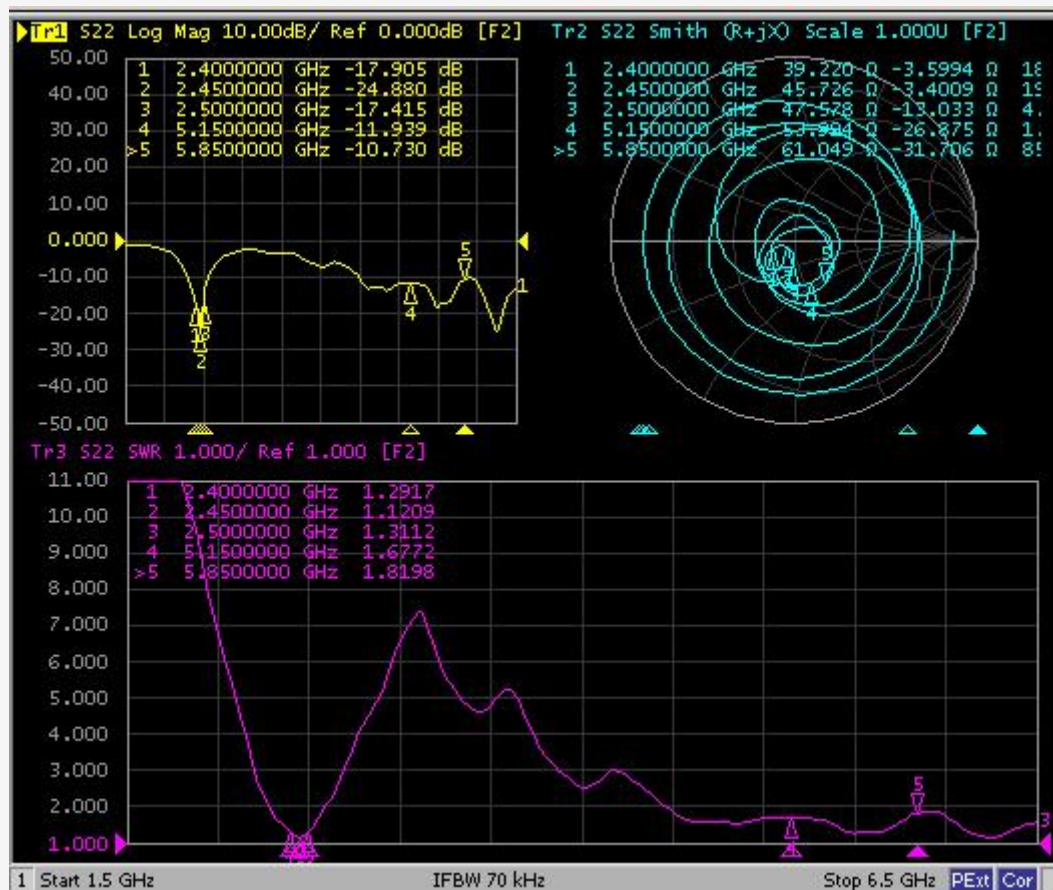


5500.000MHz E2



# 无源波形图

## WIFI 1



# 天线无源效率:

## WIFI 1 无源效率

	Efficiency (%)	Efficiency (dB)	Gain (dBi)
2400	48.49	-3.14	1.21
2450	48.99	-3.10	1.46
2500	48.29	-3.16	1.63
5150	48.85	-3.11	2.82
5300	49.95	-3.01	2.92
5500	50.99	-2.93	2.18
5700	48.78	-3.12	2.33
5850	49.88	-3.02	2.37

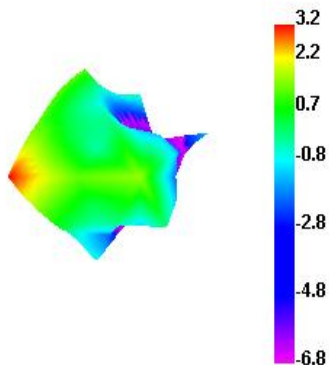




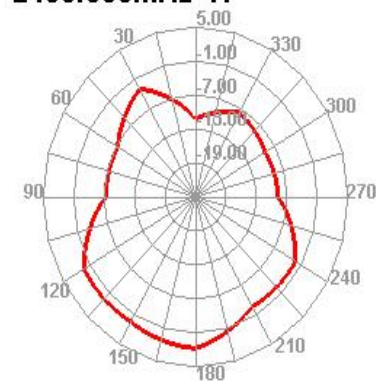
# 天线无源效率场形图:

## WIFI 1 无源效率场形图

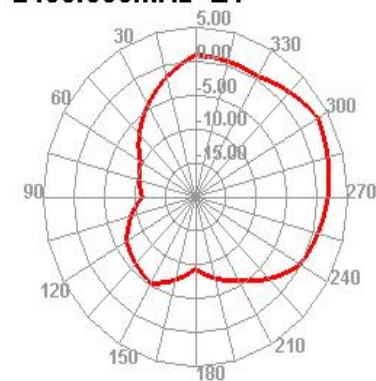
2450.000MHz



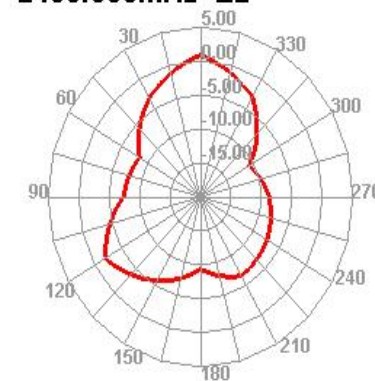
2450.000MHz H



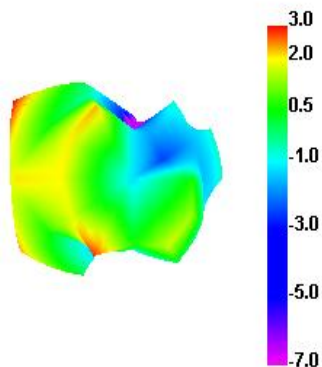
2450.000MHz E1



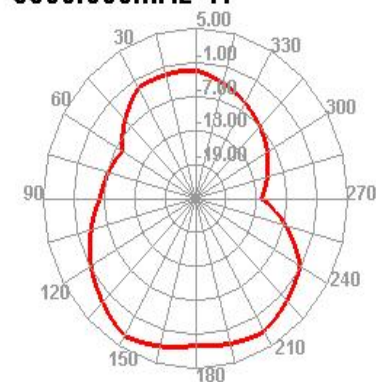
2450.000MHz E2



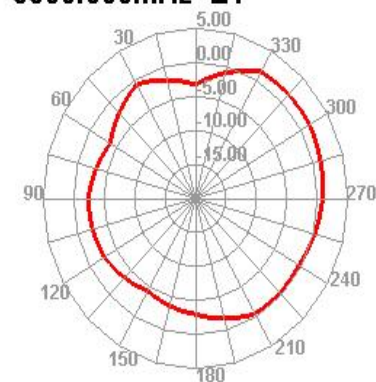
5500.000MHz



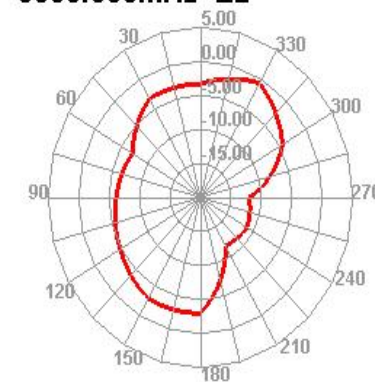
5500.000MHz H



5500.000MHz E1

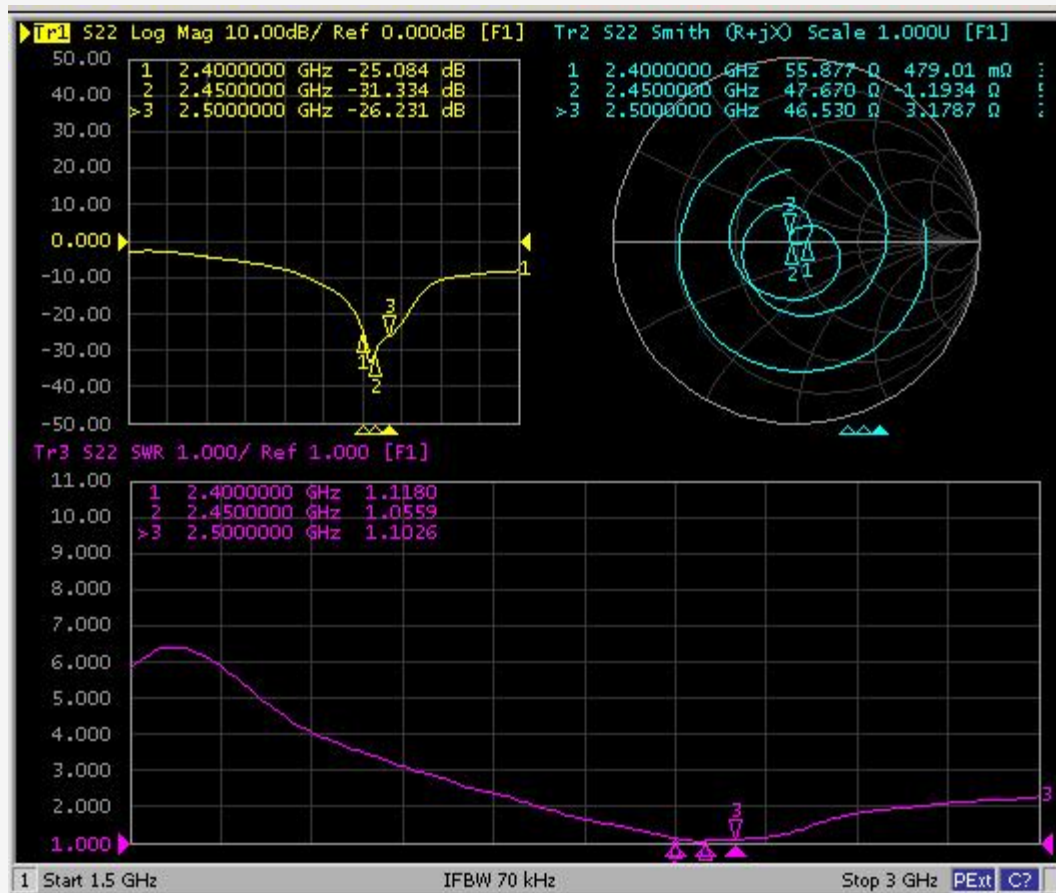


5500.000MHz E2



# 无源波形图

BT





# 天线无源效率:

## BT 无源效率

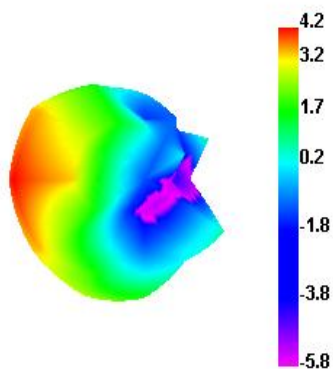
Freq (MHz)	Effi (%)	Effi (dB)	Gain (dBi)
2400	49.27	-3.07	1.76
2410	49.14	-3.09	1.04
2420	48.91	-3.11	1.34
2430	48.89	-3.11	1.68
2440	48.94	-3.10	1.86
2450	49.75	-3.03	1.16
2460	49.99	-3.01	1.16
2470	50.11	-3.00	1.42
2480	50.03	-3.01	1.23
2490	49.52	-3.05	1.32
2500	49.64	-3.04	1.43



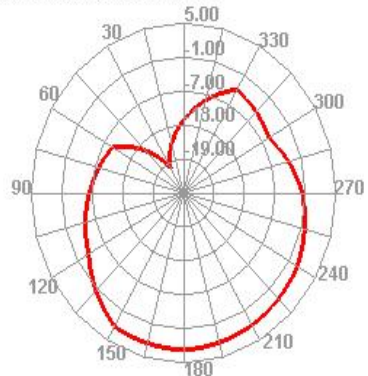
# 天线无源效率场形图:

## BT 无源效率场形图

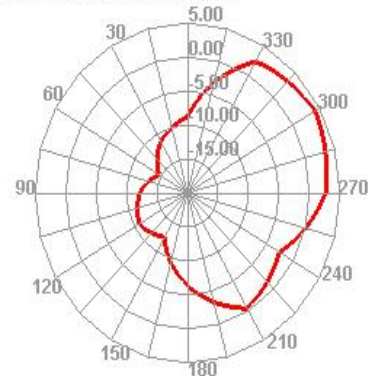
2450.000MHz



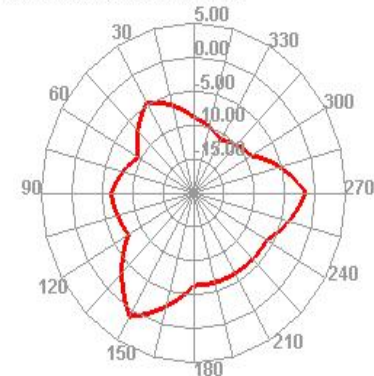
2450.000MHz H



2450.000MHz E1

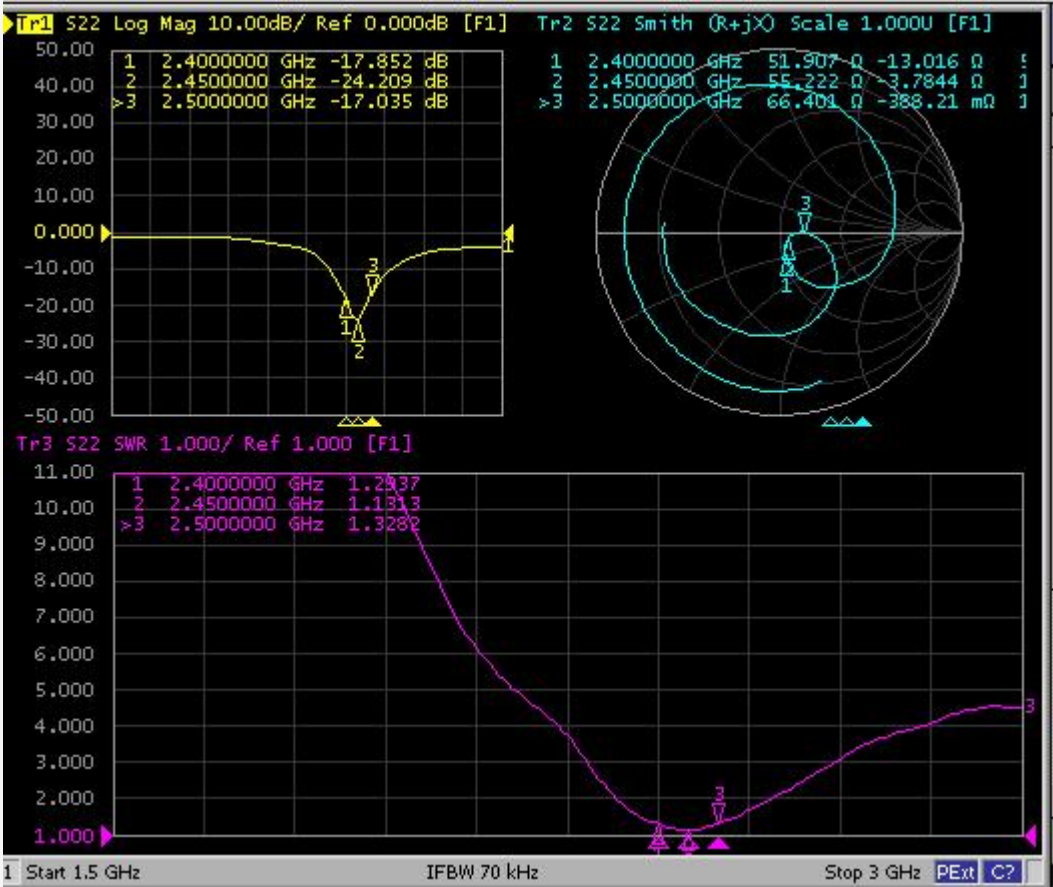


2450.000MHz E2



# 无源波形图

Zigbee



# 天线无源效率:

## Zigbee 无源效率

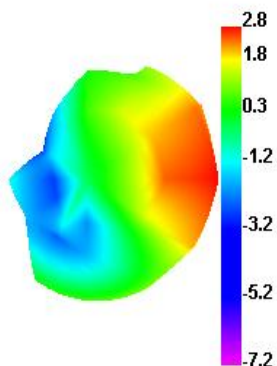
Freq (MHz)	Effi (%)	Effi (dB)	Gain (dBi)
2400	47.57	-3.23	1.75
2410	46.04	-3.37	1.63
2420	46.59	-3.32	1.51
2430	47.42	-3.24	1.65
2440	46.78	-3.30	1.87
2450	47.35	-3.25	1.82
2460	47.54	-3.23	1.96
2470	47.48	-3.23	1.95
2480	46.75	-3.30	1.04
2490	47.55	-3.23	1.99
2500	46.78	-3.30	1.16



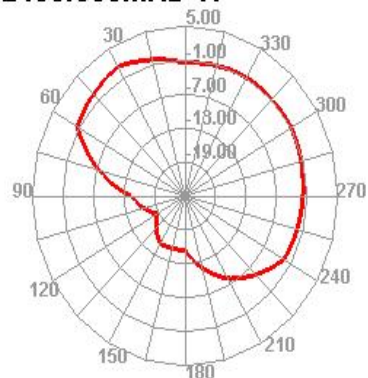
# 天线无源效率场形图:

## Zigbee 无源效率场形图

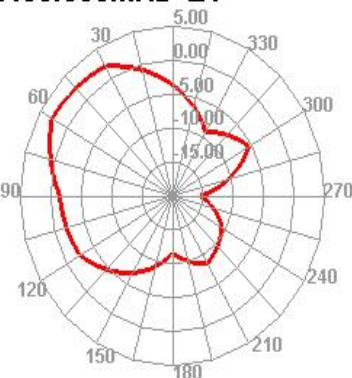
2450.000MHz



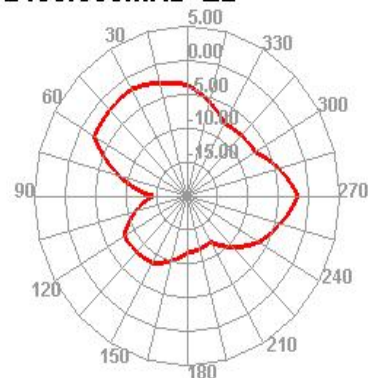
2450.000MHz H



2450.000MHz E1

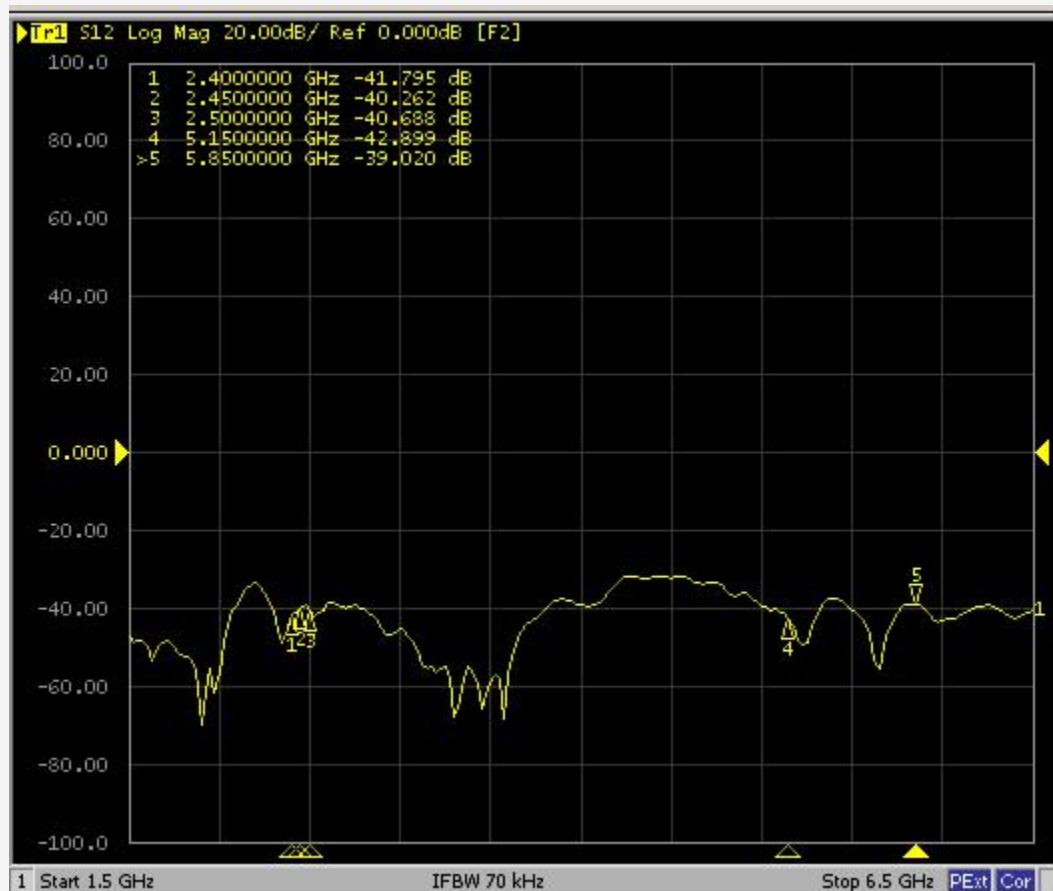


2450.000MHz E2



# 天线隔离度:

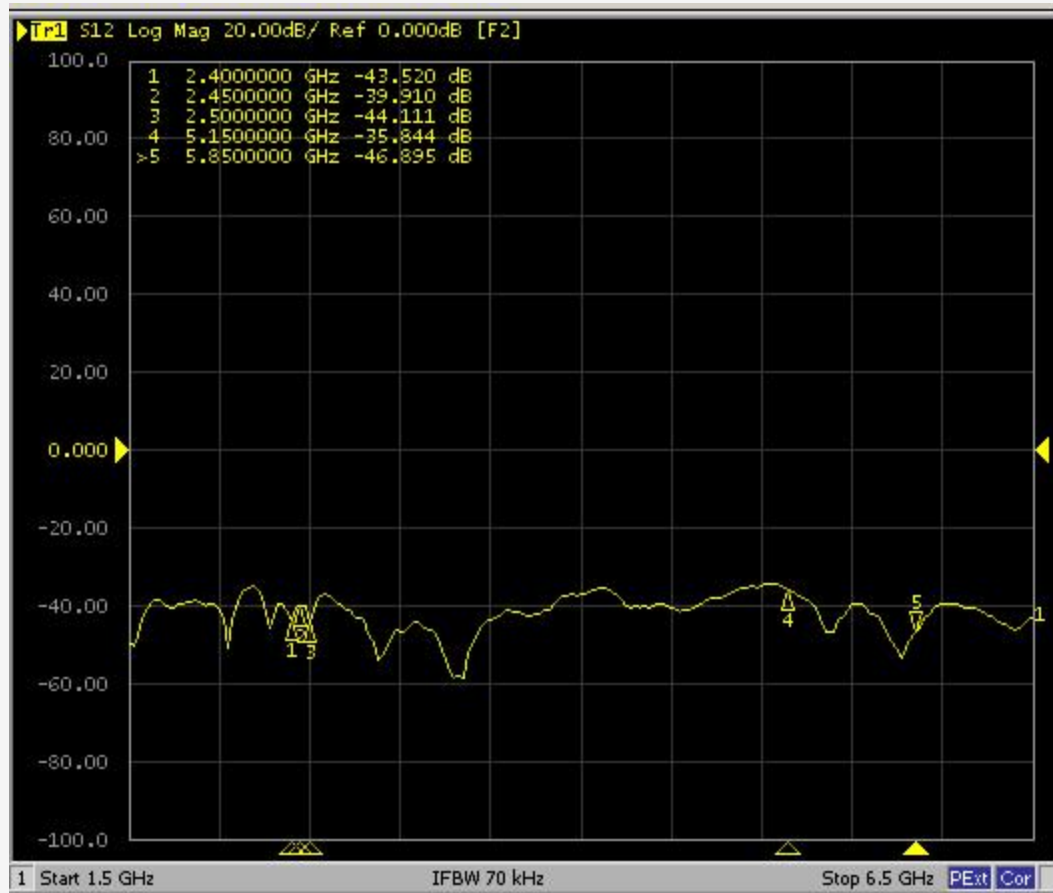
## WIFI 0 和 WIFI 1





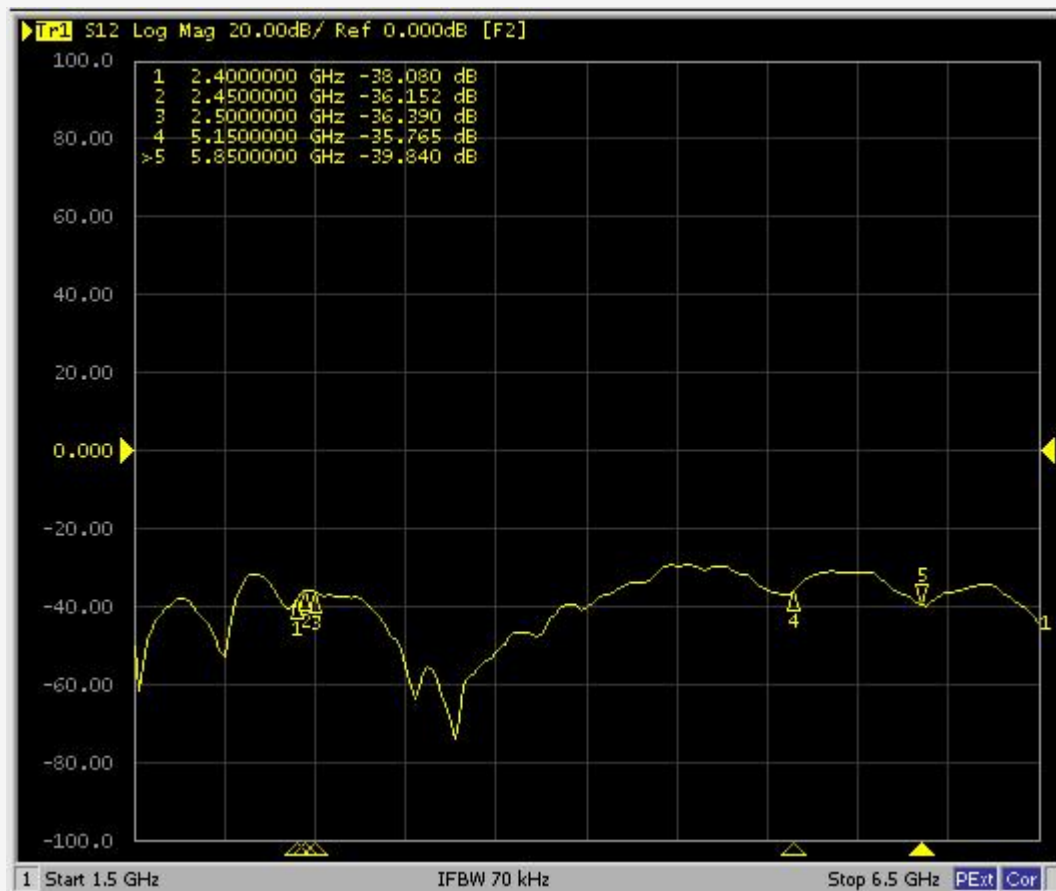
# 天线隔离度:

## WIFI 0 和 BT



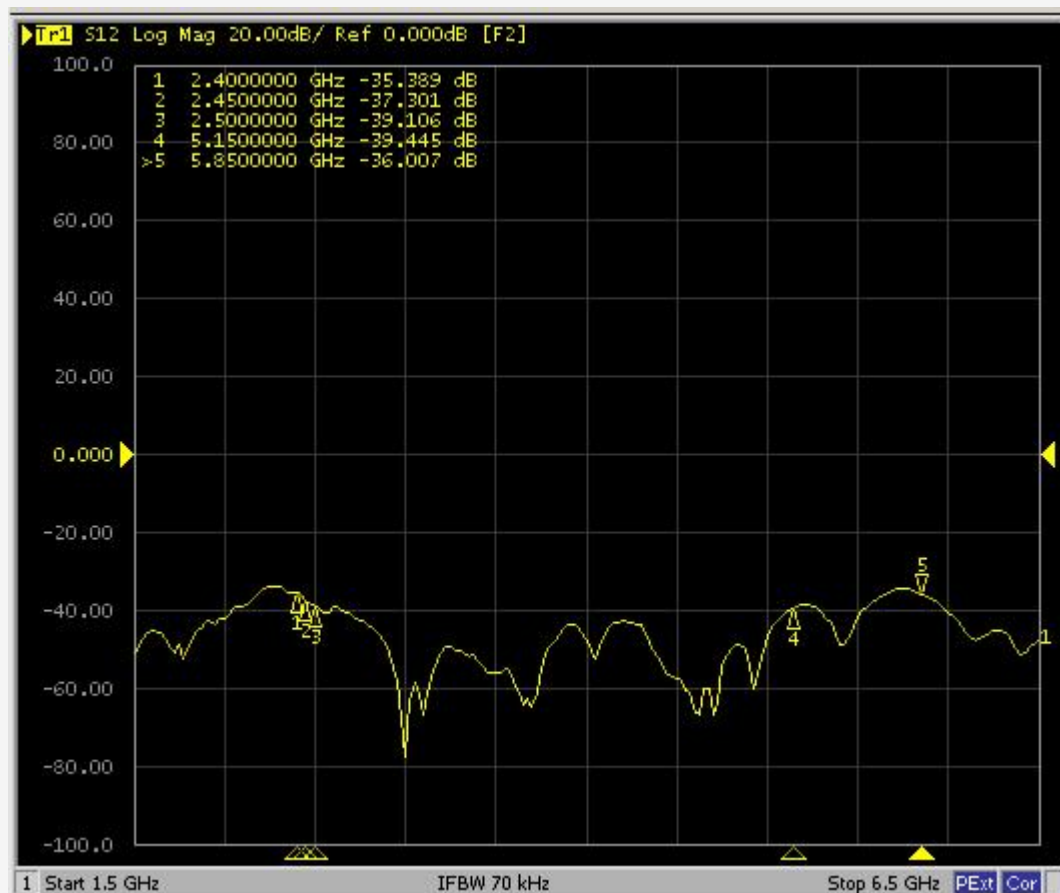
# 天线隔离度:

## WIFI 0 和 Zigbee



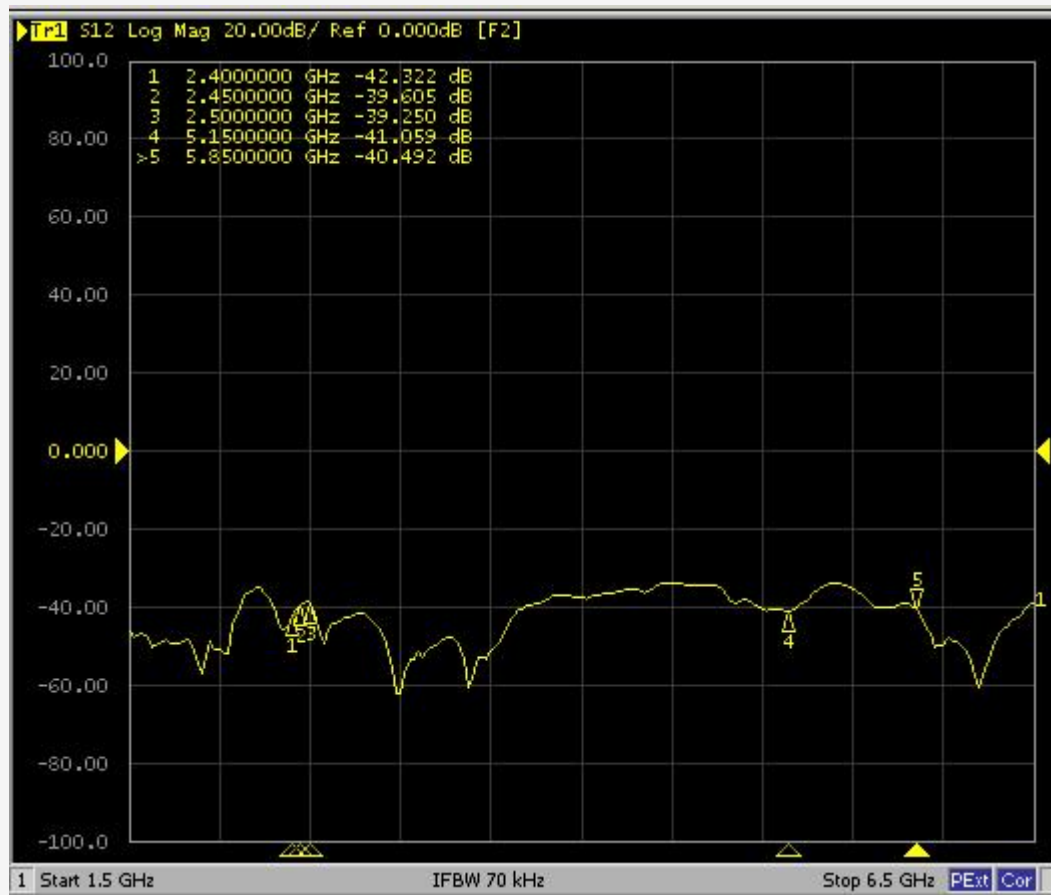
# 天线隔离度:

## WIFI 1 和 BT



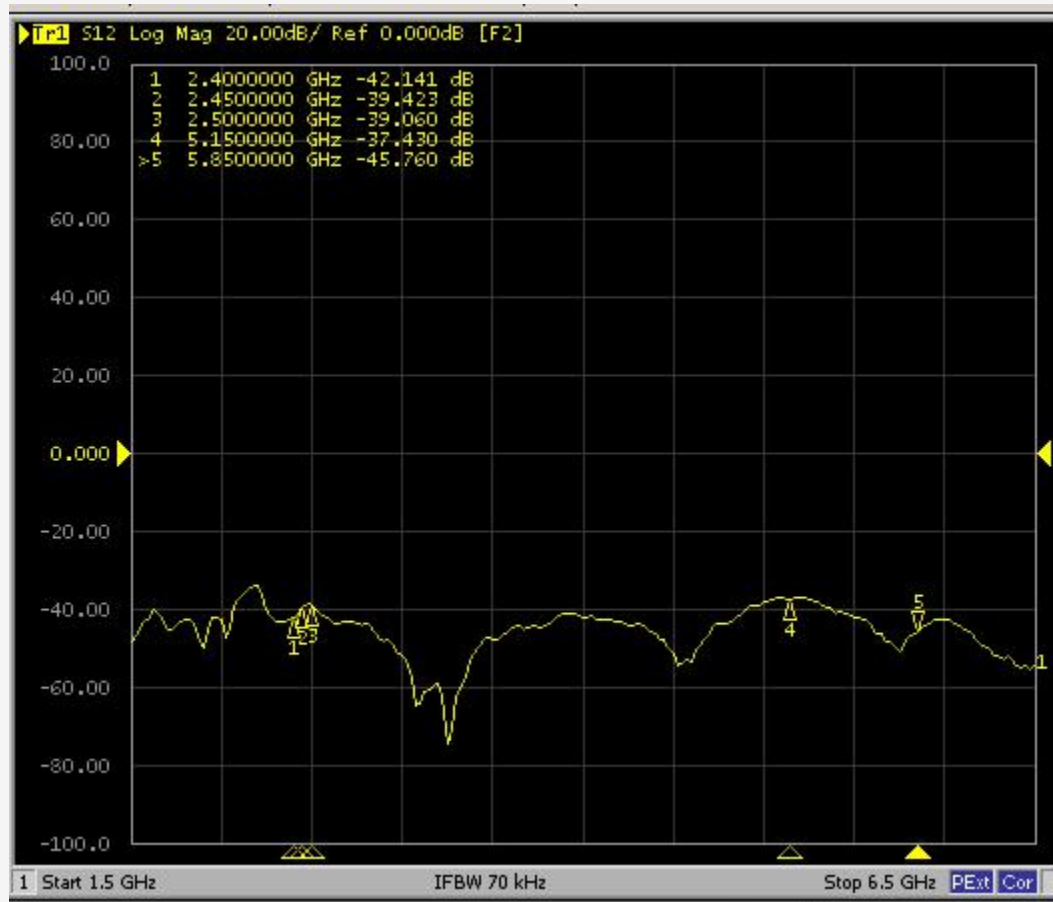
# 天线隔离度:

## WIFI 1 和 Zigbee



# 天线隔离度:

## BT 和 Zigbee



# OTA有源数据

		TPR	TIS
802.11b 11M	1	16.37	-83.15
	6	16.52	-83.47
	11	16.23	-83.71
802.11g 54M	1	15.18	-72.67
	6	15.32	-73.09
	11	14.89	-72.74
802.11n MCS7	1	14.78	-69.65
	6	15.08	-70.02
	11	14.81	-69.47
802.11a 54M	36	7.87	-73.25
	149	8.23	-73.16
	161	7.98	-73.04
BT	0	6.11	-86.40
	36	6.49	-86.88
	78	6.54	-86.64





谢谢观看

-----

