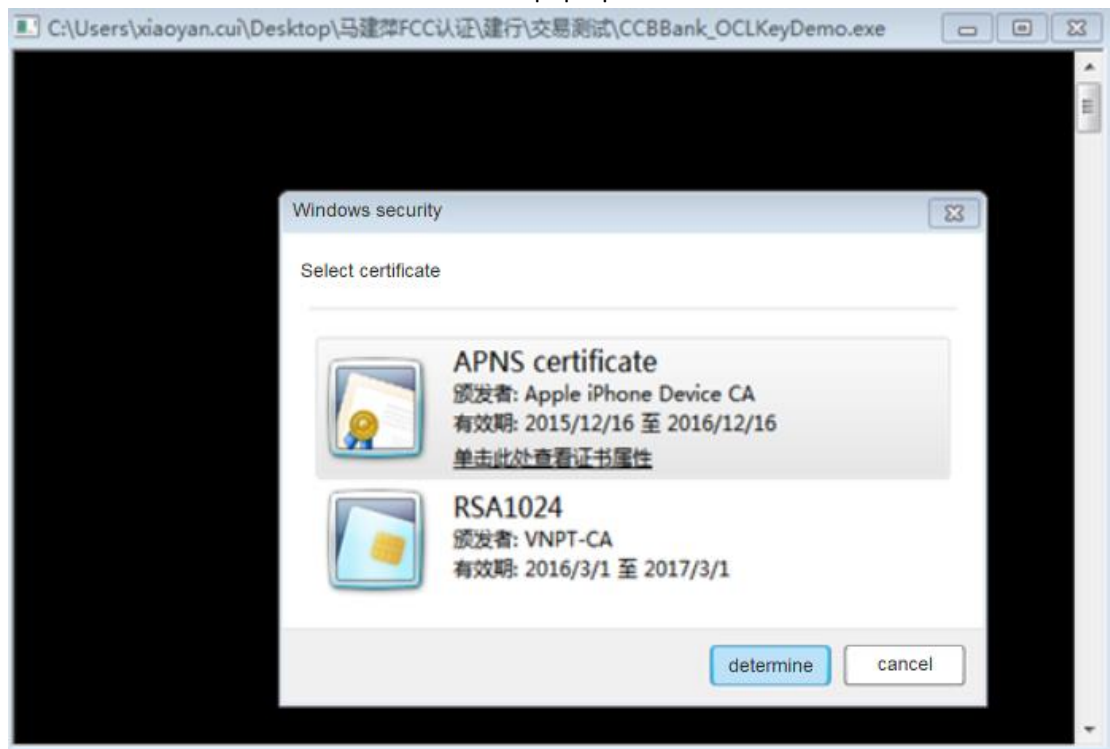


# WatchKeyPro User Manual

1. first inserted key installation Construction Bank net shield driving:
2. The folder "/ package / CCB\_E\_Setup\_WATCHDATA\_3.4.0\_20130925\_x32".
3. running transaction testing /CCBBank\_OCLKeyDemo.exe, select the RSA1024 certificate  
certificate pop-up list.



4. pop-up transaction message message and prompt input password Yindun (wa1111), enter the correct password to determine the point of network shield.



5. return to the following window to show the success of the transaction.

```
C:\Users\xiaoyan.cui\Desktop\马建萍FCC认证\建行\交易测试\CCBBank_OCLKeyDemo.exe
69B1E91C0A8B449849277566271DECC277D2038A48BD51C048C709C4FAED84B442A0A1C3D26F9175
8F5772183D9CF622C6E30C9A7BE10C41B4AB3ED0BA70DA9B6EAB04B305BD7F948D6926BAB433E543
E606D40DEC95C22A9E4D5F57585FBBF19D34E6BB504F28B5E0F5043C985A1E383F6920EE0822D9AA5
1A686A59A0752B90
CryptSignHash successful!
Use Microsoft csp to verifysign
CSP context acquired.
The key has been imported.
The hash object has been recreated.
The new has been created.
Hash Data:
9F53960B08130E0C2EFA7AEC718663786A46E3E9
CryptVerifySignature successful.
Use watchdata CSP to verifysign
CSP context acquired.
The key has been imported.
The hash object has been recreated.
The new has been created.
Hash Data:
9F53960B08130E0C2EFA7AEC718663786A46E3E9
CryptVerifySignature successful.

Please input any char to end!
```

## **FCC Caution.**

### **§ 15.19 Labelling requirements.**

This device complies with part 15 of the FCC Rules. Operation is subject to the following two conditions: (1) This device may not cause harmful interference, and (2) this device must accept any interference received, including interference that may cause undesired operation.

### **§ 15.21 Information to user.**

Any Changes or modifications not expressly approved by the party responsible for compliance could void the user's authority to operate the equipment.

### **§ 15.105 Information to the user.**

**Note:** This equipment has been tested and found to comply with the limits for a Class B digital device, pursuant to part 15 of the FCC Rules. These limits are designed to provide reasonable protection against harmful interference in a residential installation. This equipment generates uses and can radiate radio frequency energy and, if not installed and used in accordance with the instructions, may cause harmful interference to radio communications. However, there is no guarantee that interference will not occur in a particular installation. If this equipment does cause harmful interference to radio or television reception, which can be determined by turning the equipment off and on, the user is encouraged to try to correct the interference by one or more of the following measures:

- Reorient or relocate the receiving antenna.
- Increase the separation between the equipment and receiver.
- Connect the equipment into an outlet on a circuit different from that to which the receiver is connected.
- Consult the dealer or an experienced radio/TV technician for help.