

SPECIFICATION

SHEET FOR APPROVAL

(Revision: R: A0)

CUSTOMER(客户名称)	通力
CS P/N(客户机种)	YY2085C
PART NAME(品名)	WSM_1#天线组件
MODEL NAME(型号名称)	
FREQUENCY(频率)	2400~2500/5150~5975MHz 6025~6975/7025~7125MHz
ZTX NO.(物料编号)	2.00006594
DATE(日期)	2024-06-24

CUSTOMER			
QA CHECKED	ME CHECKED	RF CHECKED	MANAGER CHECKED

Remark(备注):

Sign(客户确认签字盖章):

Shenzhen ZTX Communication Technology Co., Ltd				
MANAGER CHECKED	MANAGER CHECKED	ME CHECKED	RF CHECKED	LISTER
		覃乐	韦进	

ZTX 中天迅

Shenzhen ZTX Communication Technology Co., Ltd

地址: 深圳市宝安区石岩镇石龙大道 34 号(腾达工业园)

邮编: 518000

电话: 0755-27588320

传真: 0755-27588045

<http://www.chinaztx.com>

ANTENNA SPECIFICATION

CUS P/N :YY2085C_WSM_1#天线组件

Application Date:Jun,24,2024

Rev: R:A0

ZTX P/N :YY2085C_WSM_1#天线组件

Editor:

Page 1 of 10

Revision history

版本	日期	状态
A0	2024-06-24	初版

ANTENNA SPECIFICATION

CUS P/N :YY2085C_WSM_1#天线组件
ZTX P/N :YY2085C_WSM_1#天线组件

Application Date:Jun,24,2024
Editor:

Rev: R:A0
Page 2 of 10

Index

		Revision history	1
		Index	2
1		Mechanical Specification	3
	1-1	Mechanical Specification (WSM_1#天线组件)	3
2		Test equipment	4
	2-1	Active Test	5
	2-2	VSWR&S11	6
	2-3	Passive Test	6
	2-4	2D/3D Radiation Pattern Results	7~8
	2-5	insulation	8~9
	2-6	Environment treatment	10

ANTENNA SPECIFICATION

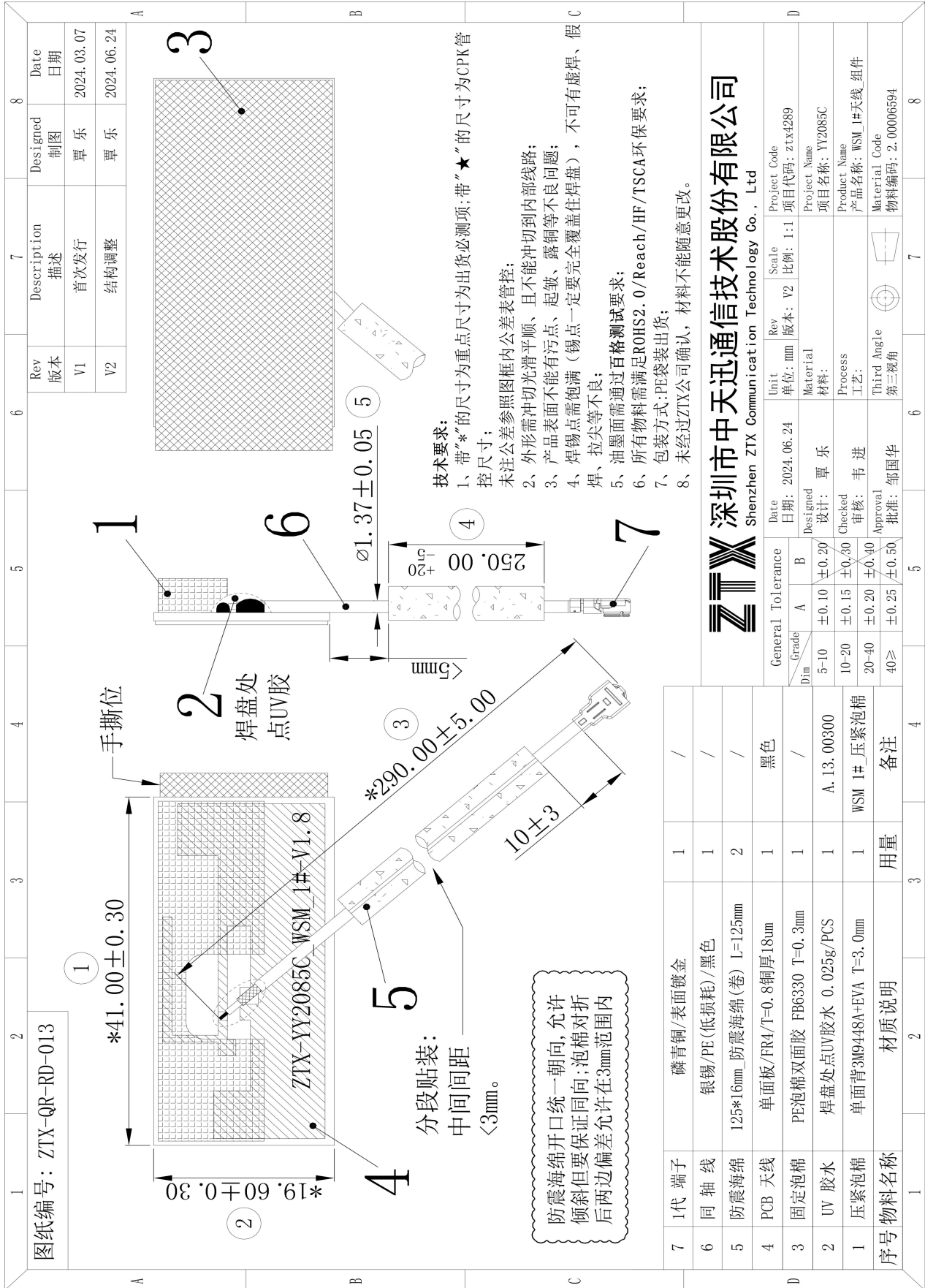
CUS P/N :YY2085C_WSM_1#天线组件
ZTX P/N :YY2085C_WSM_1#天线组件

Application Date:Jun,24,2024
Editor:

Rev: R:A0
Page 3 of 10

1. Mechanical Specification

1-1 Mechanical Configuration (WSM_1#天线组件)



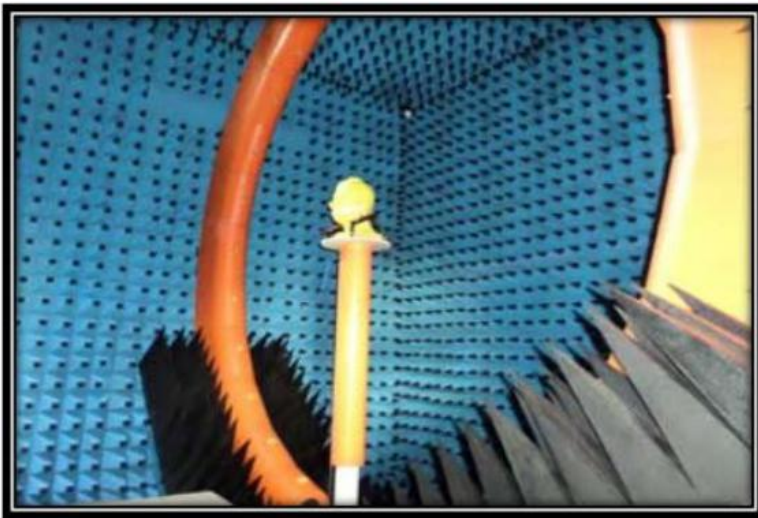
ANTENNA SPECIFICATION

CUS P/N :YY2085C_WSM_1#天线组件
ZTX P/N :YY2085C_WSM_1#天线组件

Application Date:Jun,24,2024
Editor:

Rev: R:A0
Page 4 of 10

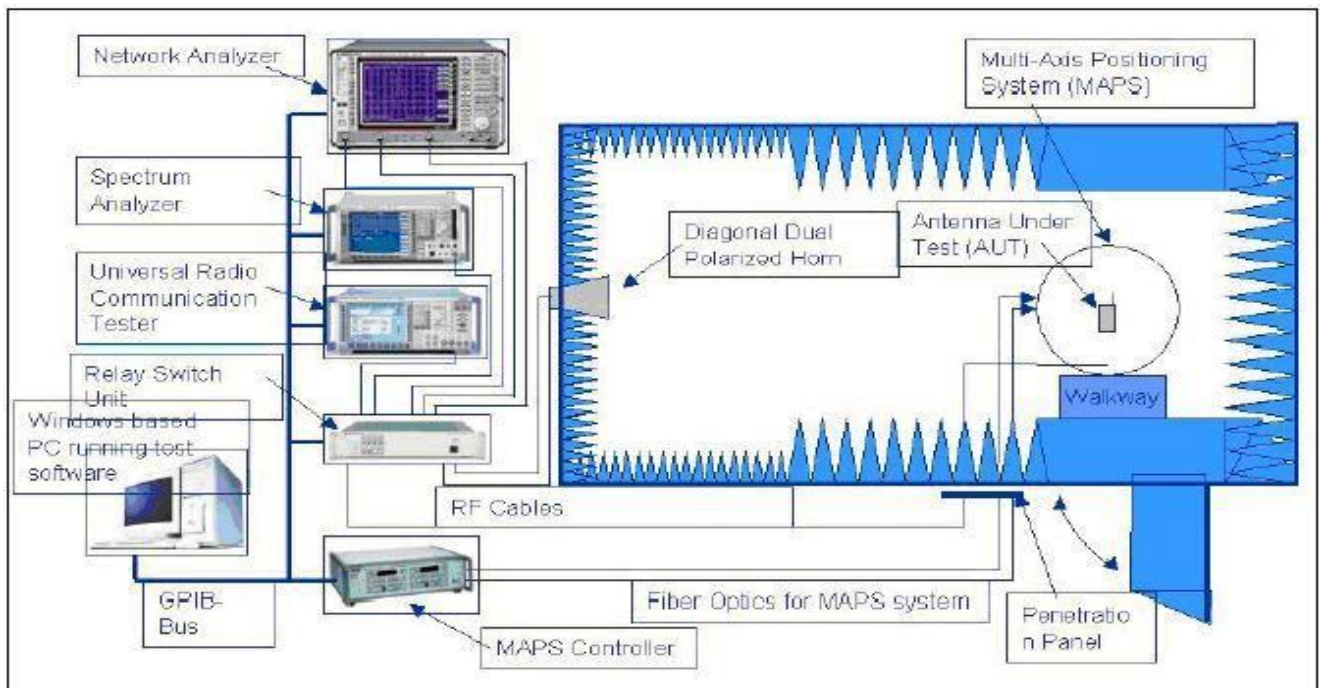
2.Test equipment



Owned 6 microwave dark room, equipped 2 sets world leading France Satimo SG24 OTA certification test systems (one in SHENZHEN, another one in Shanghai), ETS OTA Standard test system, Blue test reverberation test system which is High repeatability, high accuracy and high resolution. It can quickly provide accurate test reports, fully meet the CTIA standards.

Testing range:

Support active, passive testing of GSM/CDMA/WCDMA/TD-SCDMA/LTE/WIFI/WLAN/WiMax/BT/GPS/MIMO/UWB within 0.4-6G.



ANTENNA SPECIFICATION

CUS P/N :YY2085C_WSM_1#天线组件

Application Date:Jun,24,2024

Rev: R:A0

ZTX P/N :YY2085C_WSM_1#天线组件

Editor:

Page 5 of 10

2-1 Active Test

WIFI传导数据				
频段	模式	CH	功率	灵敏度
2.4G	11b (1M)	1	9.4	-94
		6	9.4	-94
		11	9.3	-94
2.4G	11g (6M)	1	9.5	-92
		6	9.6	-92
		11	9.6	-92
2.4G	11n (6.5M)	1	9.5	-88
		6	9.6	-88
		11	9.6	-88
5G	11a(6M)	36	11.5	-92
		100	12.0	-92
		165	12.0	-92
5G	11n(6.5M)	36	11.5	-89
		100	11.8	-89
		165	11.8	-89

OTA数据 (WIFI ANT1)					
频段	模式	CH	TRP	MAX	TIS
2.4G	11b (1M)	1	6.18	11.68	-92.13
		6	6.06	11.43	-92.35
		11	6.25	11.72	-92.21
2.4G	11g (6M)	1	6.18	11.66	-89.96
		6	6.22	11.70	-90.22
		11	6.41	11.89	-90.05
2.4G	11n (6.5M)	1	6.06	11.32	-87.21
		6	6.33	11.83	-86.76
		11	6.16	11.65	-86.83
5G	11a(6M)	36	8.72	14.78	-89.64
		100	8.49	15.13	-89.43
		165	8.39	15.02	-89.36
5G	11n(6.5M)	36	8.69	14.86	-87.11
		100	8.77	15.33	-86.76
		165	8.59	15.26	-86.82

OTA数据 (WIFI ANT3)					
频段	模式	CH	TRP	MAX	TIS
2.4G	11b (1M)	1	6.43	11.92	-92.03
		6	6.46	11.99	-92.12
		11	6.62	12.03	-92.18
2.4G	11g (6M)	1	6.23	11.68	-90.01
		6	6.26	11.71	-89.91
		11	6.38	11.88	-89.86
2.4G	11n (6.5M)	1	6.31	11.82	-86.89
		6	6.26	11.79	-87.02
		11	6.11	11.66	-86.68
5G	11a(6M)	36	8.32	15.25	-89.72
		100	8.41	15.86	-90.08
		165	8.55	16.02	-89.64
5G	11n(6.5M)	36	8.42	15.31	-86.87
		100	8.55	16.01	-86.62
		165	8.56	15.98	-86.78

ANTENNA SPECIFICATION

CUS P/N :YY2085C_WSM_1#天线组件

Application Date:Jun,24,2024

Rev: R:A0

ZTX P/N :YY2085C_WSM_1#天线组件

Editor:

Page 6 of 10

2-2 VSWR&S11



2-3 Passive Test

Freq (MHz)	Efficiency (%)	Efficiency (dB)	Gain (dBi)	Freq (MHz)	Efficiency (%)	Efficiency (dB)	Gain (dBi)
2400	49%	-3.10	2.88	5925	40%	-3.98	2.21
2410	49%	-3.10	2.67	5975	39%	-4.09	2.43
2420	49%	-3.10	2.72	6025	40%	-3.98	2.14
2430	50%	-3.01	2.63	6075	42%	-3.77	2.75
2440	51%	-2.92	2.73	6125	42%	-3.77	2.73
2450	50%	-3.01	2.81	6175	41%	-3.87	2.81
2460	51%	-2.92	2.76	6225	40%	-3.98	2.33
2470	50%	-3.01	2.52	6275	39%	-4.09	2.68
2480	49%	-3.10	2.53	6325	43%	-3.67	2.51
2490	49%	-3.10	2.56	6375	44%	-3.57	2.81
2500	49%	-3.10	2.49	6425	43%	-3.67	3.16
5150	42%	-3.77	2.36	6475	43%	-3.67	3.11
5200	43%	-3.67	2.22	6525	42%	-3.77	3.28
5250	43%	-3.67	2.64	6575	43%	-3.67	2.96
5300	44%	-3.57	2.88	6625	43%	-3.67	2.56
5350	43%	-3.67	2.71	6675	42%	-3.77	2.98
5400	44%	-3.57	2.89	6725	42%	-3.77	2.88
5450	45%	-3.47	2.71	6775	43%	-3.67	2.19
5500	44%	-3.57	2.91	6825	43%	-3.67	2.59
5550	43%	-3.67	2.81	6875	44%	-3.57	2.43
5600	44%	-3.57	2.79	6925	42%	-3.77	2.74
5650	43%	-3.67	3.09	6975	44%	-3.57	2.69
5700	42%	-3.77	3.22	7025	41%	-3.87	2.59
5750	41%	-3.87	3.31	7075	43%	-3.67	2.99
5800	42%	-3.77	3.22	7125	41%	-3.87	2.48
5850	43%	-3.67	2.89				

ANTENNA SPECIFICATION

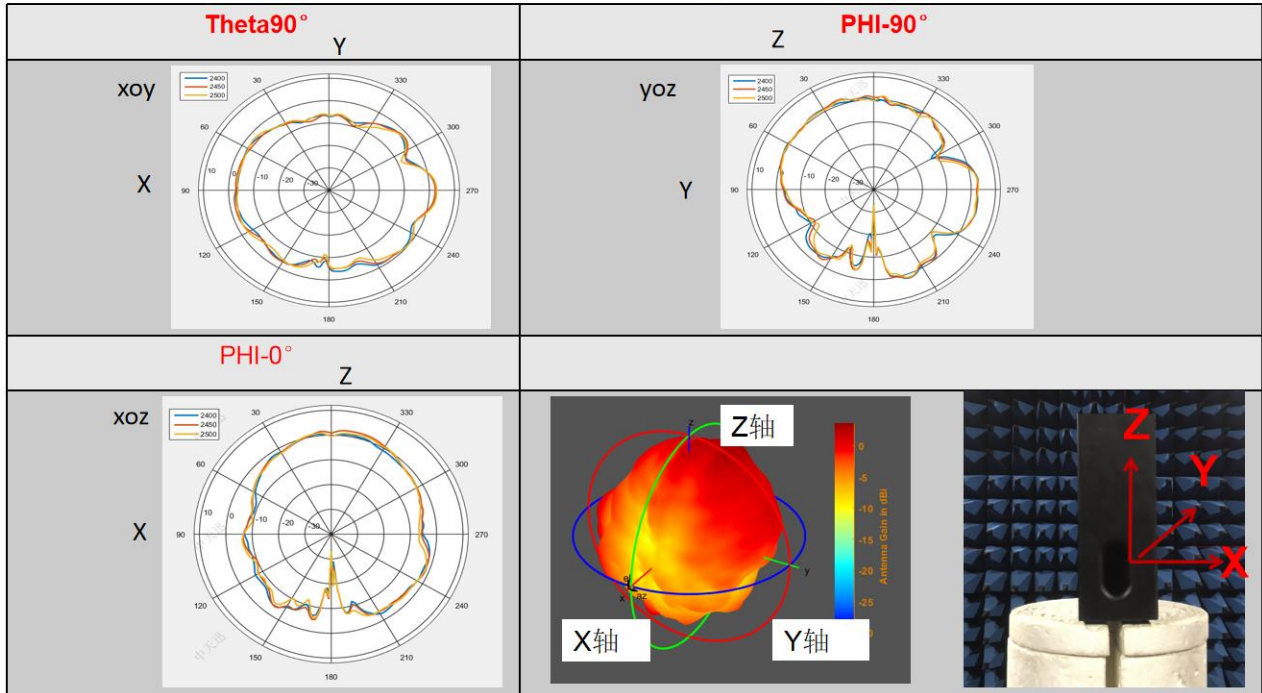
CUS P/N :YY2085C_WSM_1#天线组件
ZTX P/N :YY2085C_WSM_1#天线组件

Application Date:Jun,24,2024
Editor:

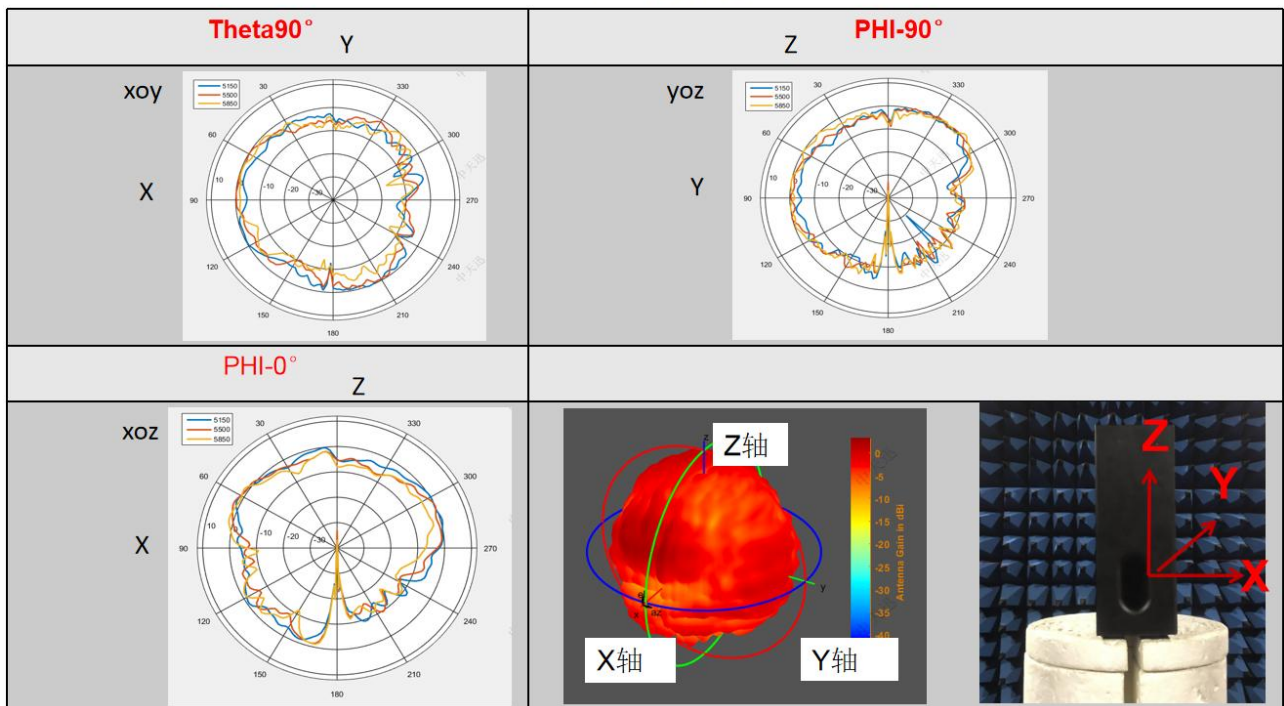
Rev: R:A0
Page 7 of 10

2-4 2D/3D Radiation Pattern Results

ANT 1# (2G方向图)



ANT 1# (5G方向图)



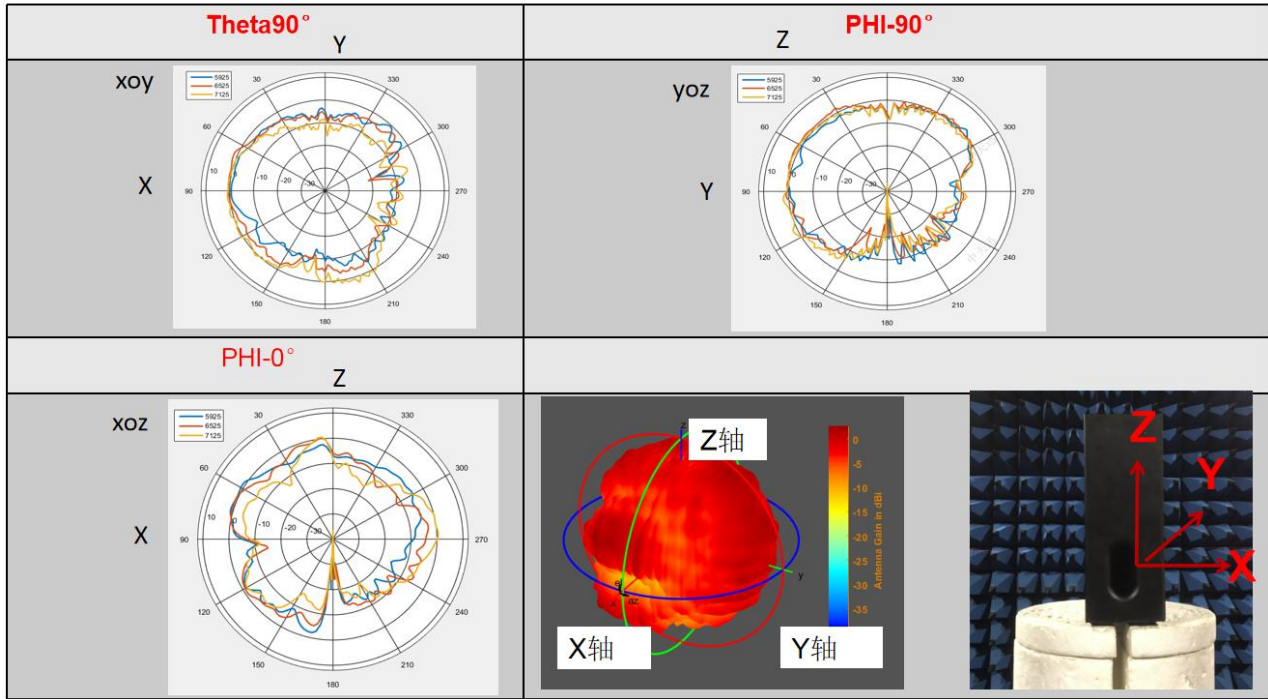
ANTENNA SPECIFICATION

CUS P/N :YY2085C_WSM_1#天线组件
ZTX P/N :YY2085C_WSM_1#天线组件

Application Date:Jun,24,2024
Editor:

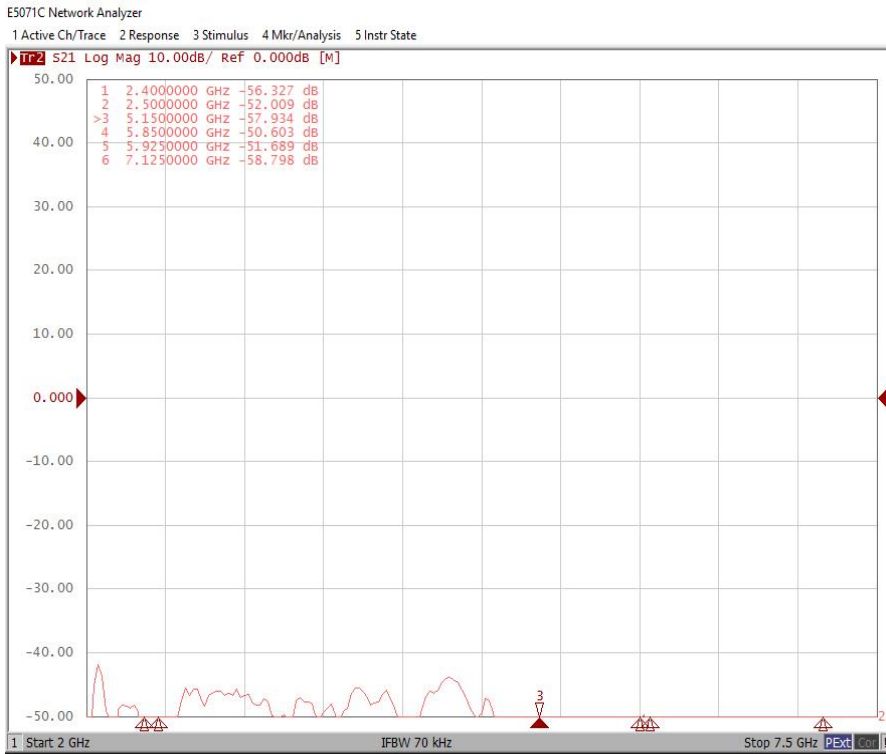
Rev: R:A0
Page 8 of 10

ANT 1# (6G方向图)



2-5 insulation

ANT1&ANT2



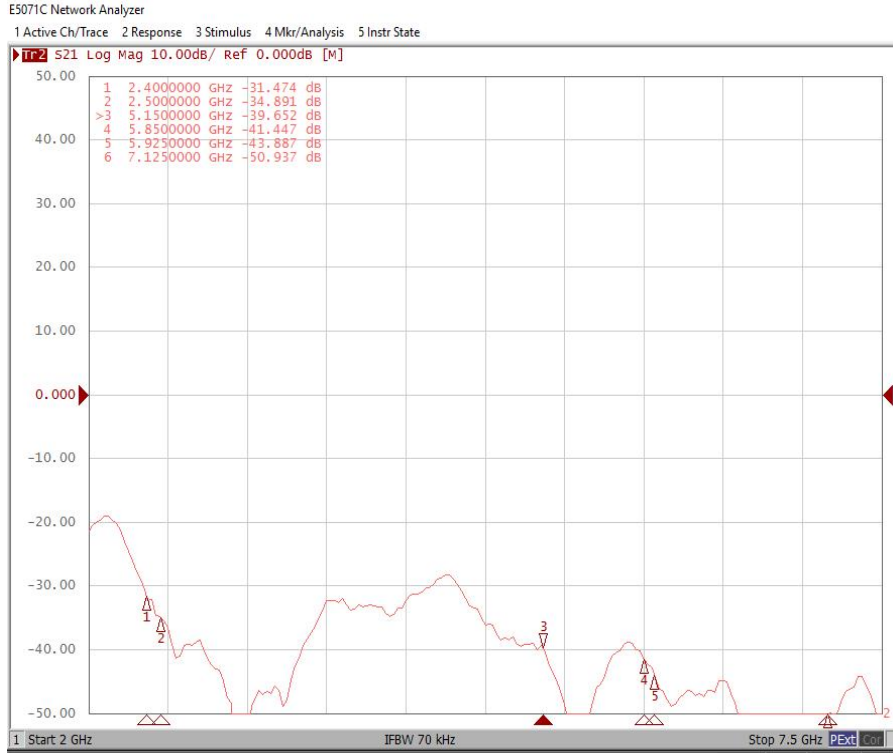
ANTENNA SPECIFICATION

CUS P/N :YY2085C_WSM_1#天线组件
ZTX P/N :YY2085C_WSM_1#天线组件

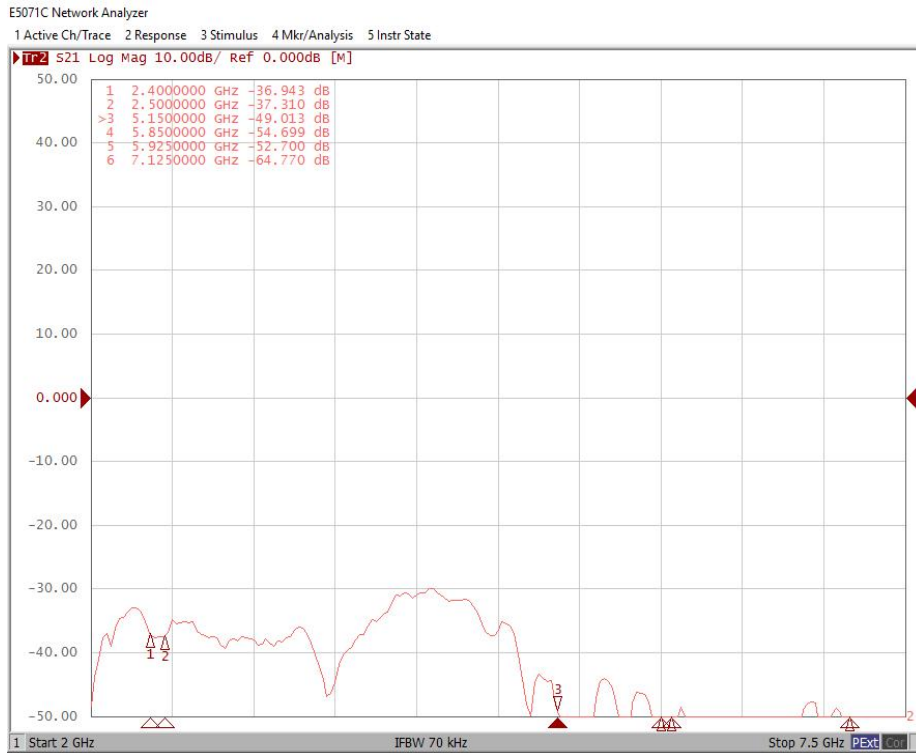
Application Date:Jun,24,2024
Editor:

Rev: R:A0
Page 9 of 10

ANT1&ANT3



Ant2&Ant3



ANTENNA SPECIFICATION

CUS P/N :YY2085C_WSM_1#天线组件

Application Date:Jun,24,2024

Rev: R:A0

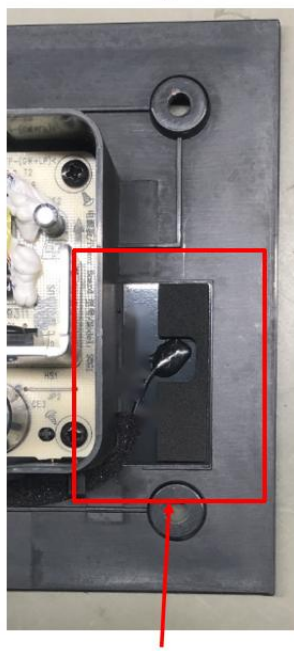
ZTX P/N :YY2085C_WSM_1#天线组件

Editor:

Page 10 of 10

2-6 Environment treatment

Ant-1: WIFI (2.4G/5G/6E)



Size: 41X19.6mm