

TYPE OF EXHIBIT: INTERNAL PHOTOGRAPHS
FCC PART: 2.1033 (b)(7)

MANUFACTURER: RITRON, INC.
505 West Carmel Drive
Carmel, IN 46032

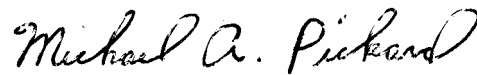
FCC ID: AIERIT27-450
MODELS: LM-U450, LPA-U450
DATE: September 17, 2007

IC STANDARDS:	RSP-100, Issue 9, Section 5.1(f) RSP-100, Issue 9, Section 7.2(d)
INDUSTRY CANADA:	1084A-RIT27450
MODELS:	LM-U450-CANADA, LPA-U450-CANADA

Included in this exhibit are photographs of the RITRON Models LM-U450 and LPA-U450 UHF-FM Receiver printed circuit board assembly and installation.

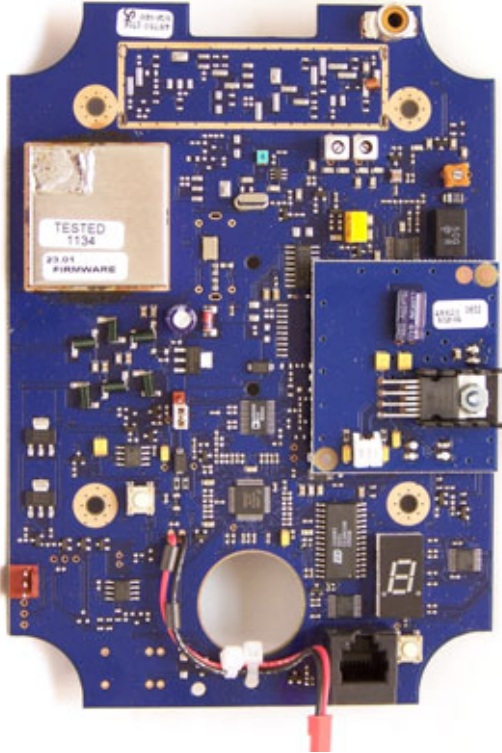
Additional photographs of the equipment of sufficient clarity to reveal equipment construction and layout, labels for controls and meters, and chassis assembly are included with this Certification request as separate exhibits.

Signed:

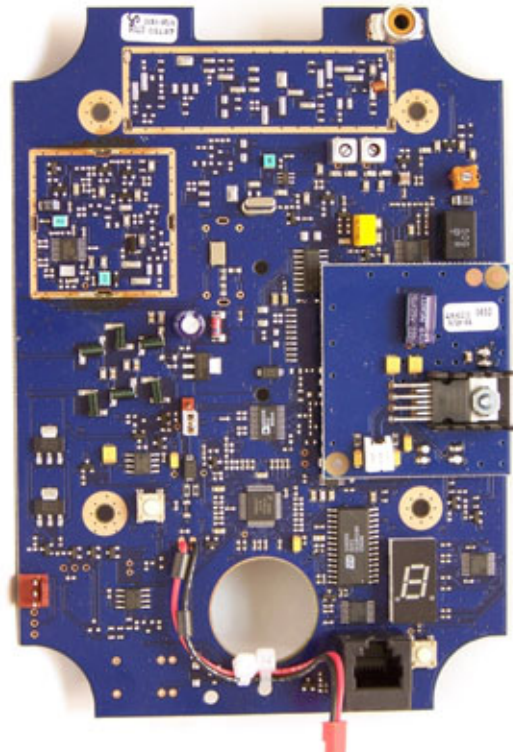


Michael A. Pickard - Project Engineer

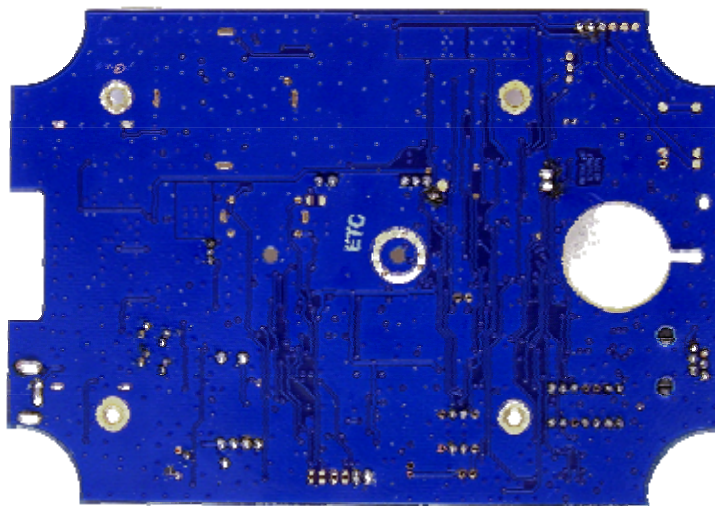
EXHIBIT: INTERNAL PHOTOGRAPHS
FCC ID: AIERIT27-450
CANADA: 1084A-RIT27450
MODELS: LM-U450, LM-U450-CANADA



PCB topside

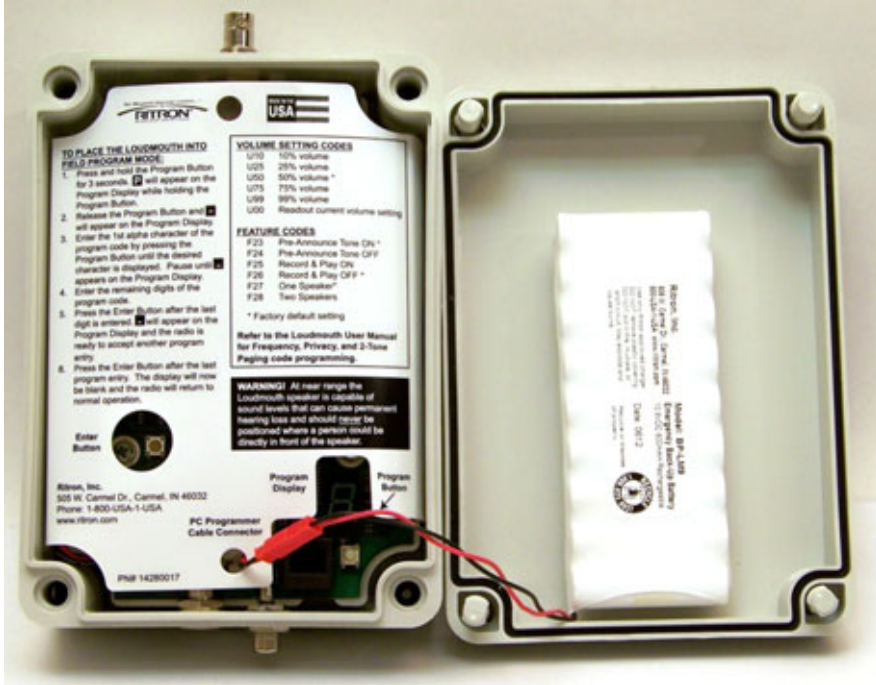


PCB topside with RF shield removed

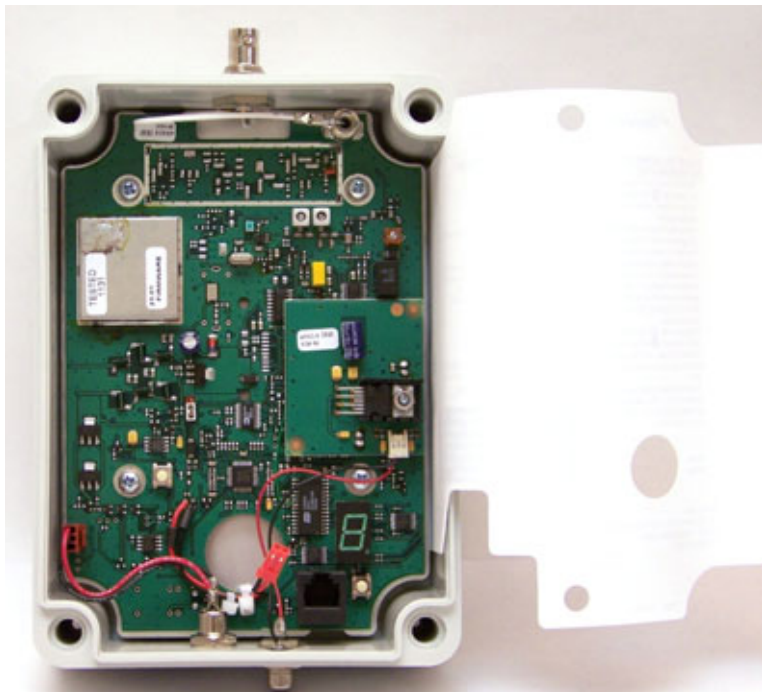


PCB bottom side

EXHIBIT: INTERNAL PHOTOGRAPHS
FCC ID: AIERIT27-450
CANADA: 1084A-RIT27450
MODELS: LM-U450, LM-U450-CANADA

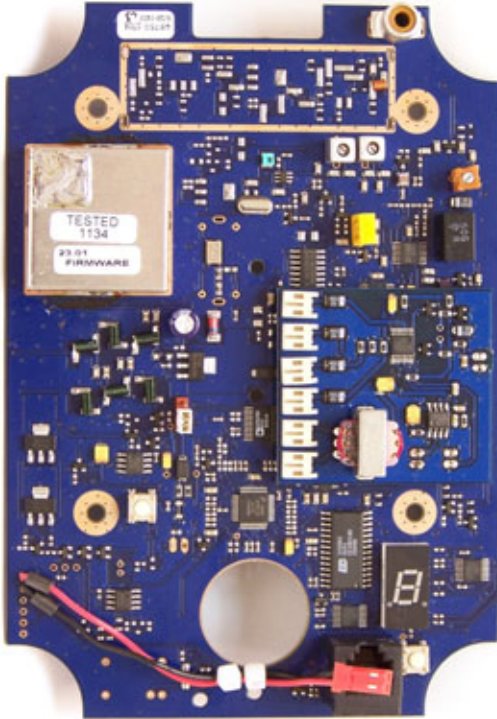


Case top removed showing back-up battery

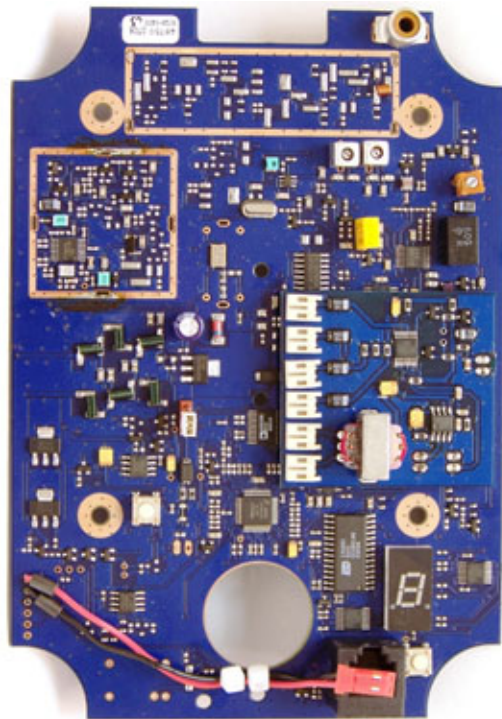


Case top removed and inlay pulled back to show
pcb installation

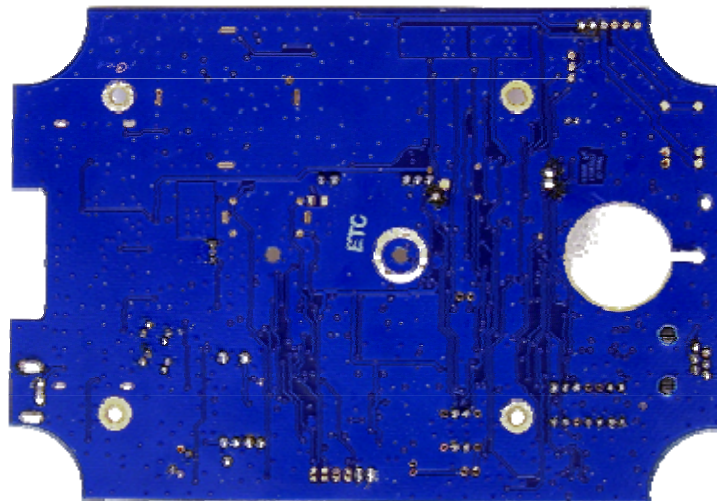
EXHIBIT: INTERNAL PHOTOGRAPHS
FCC ID: AIERIT27-450
CANADA: 1084A-RIT27450
MODELS: LPA-U450, LPA-U450-CANADA



PCB topside

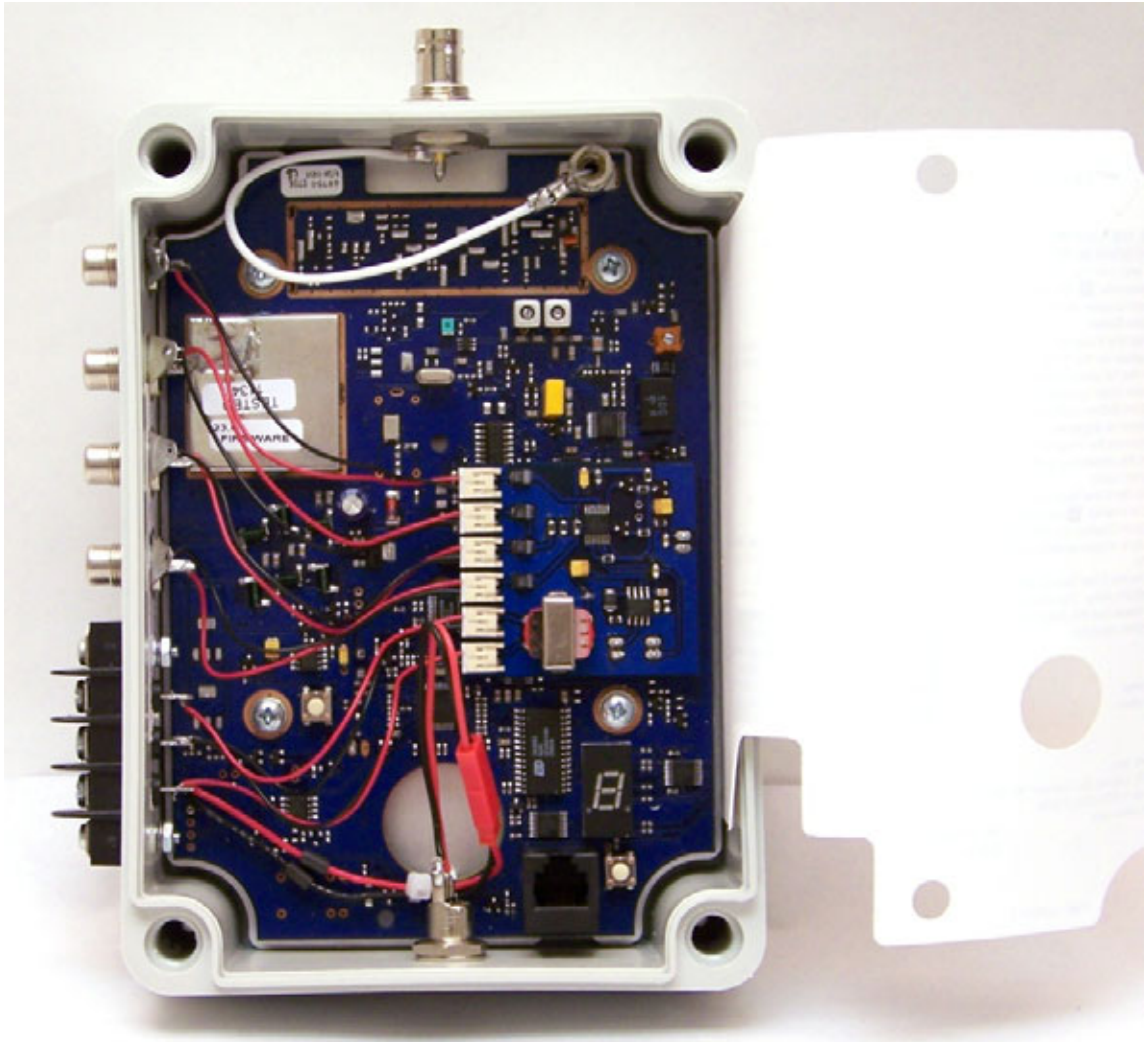


PCB topside with RF shield removed



PCB bottom side

EXHIBIT: INTERNAL PHOTOGRAPHS
FCC ID: AIERIT27-450
CANADA: 1084A-RIT27450
MODELS: LPA-U450, LPA-U450-CANADA



Case top removed and inlay pulled back to show pcb installation