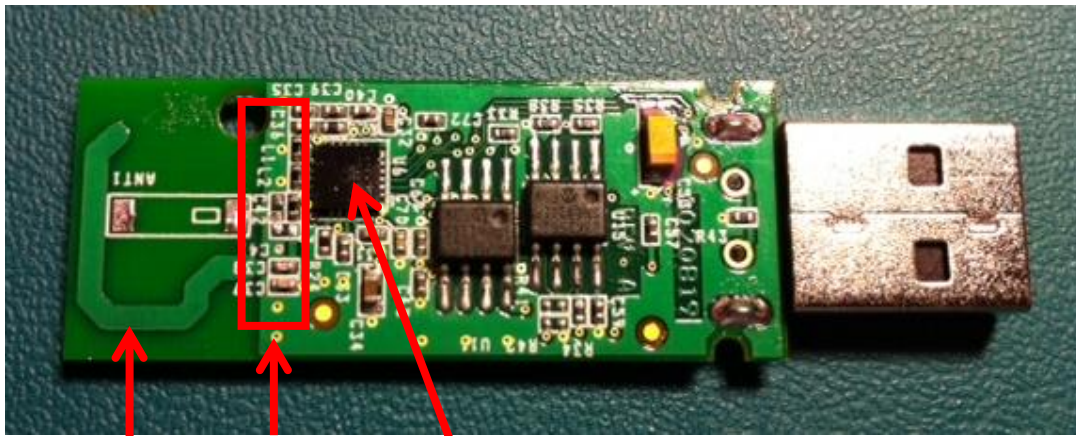


Antenna information

The only antenna used is a quarterwave monopole pcb antenna. The maximum antenna gain is 2 dBi.

No external connectors are available to the user.

Front side of PCB

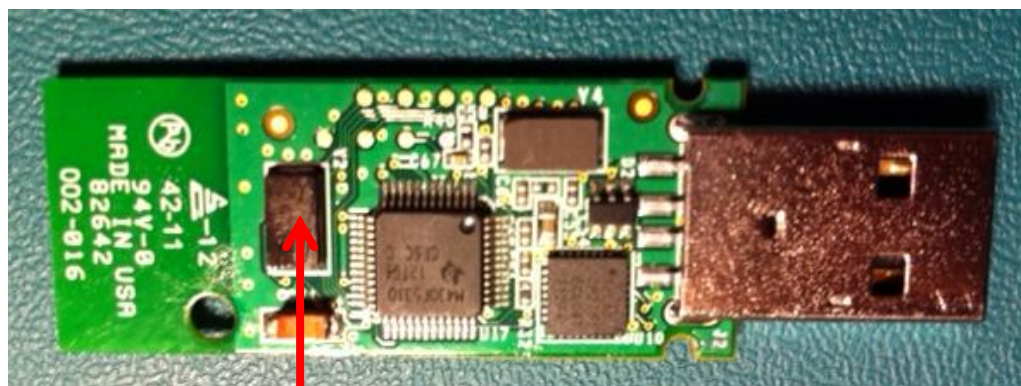


Quarterwave
Monopole
PCB Antenna

Single ended
50 ohm
Matching
Network

nRF24L01
Single Chip
radio

Backside of PCB



16MHz
Crystal