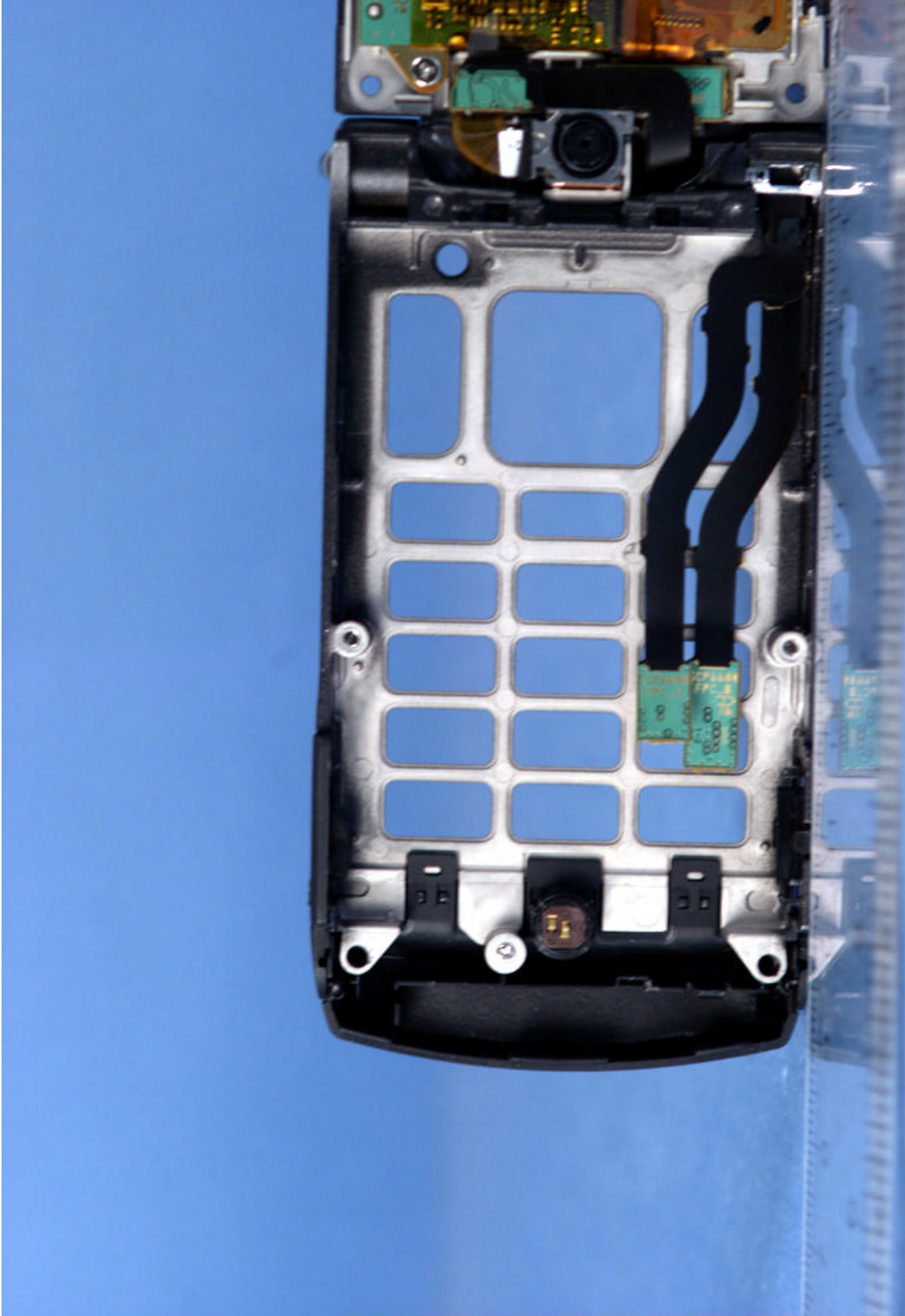

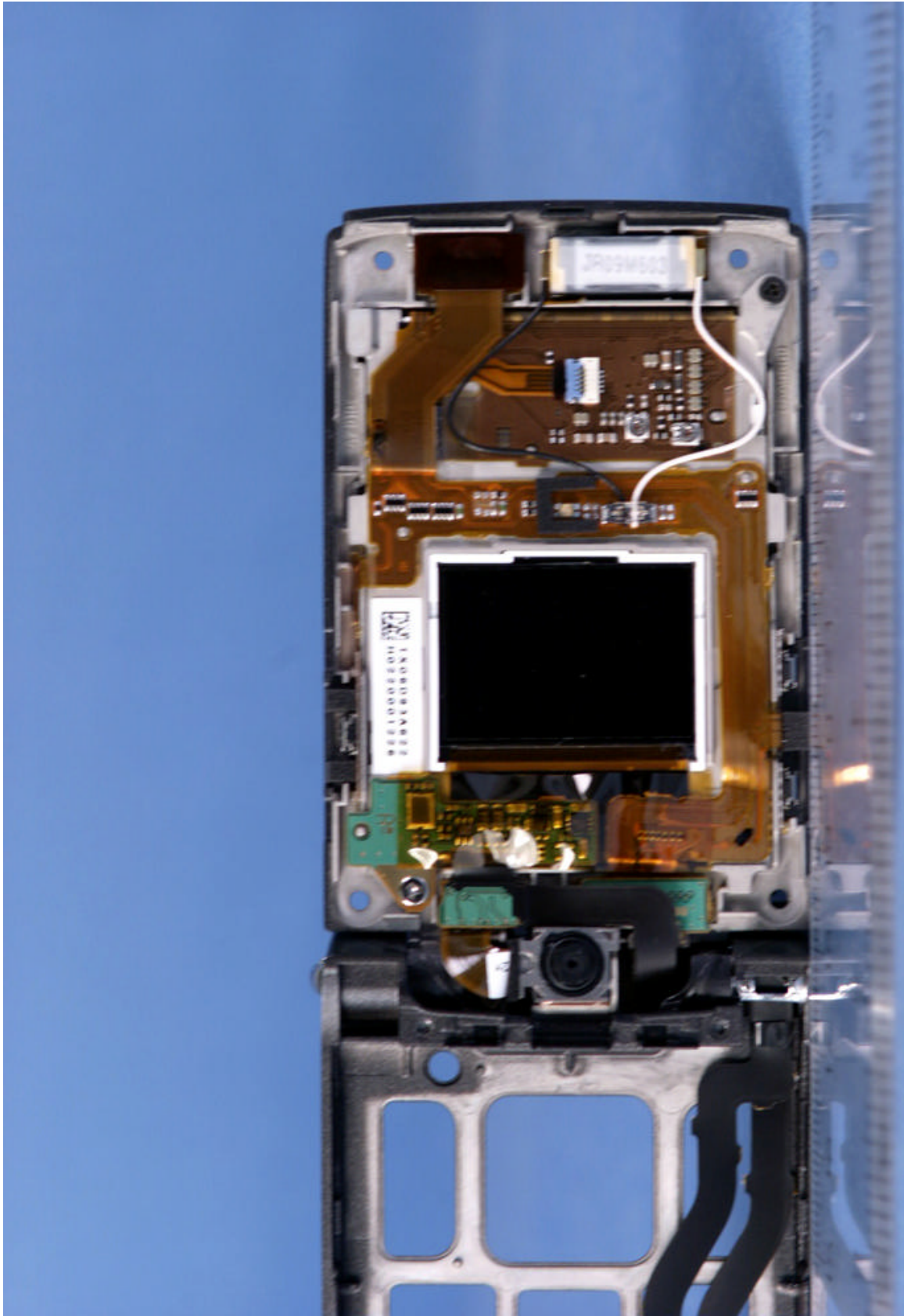

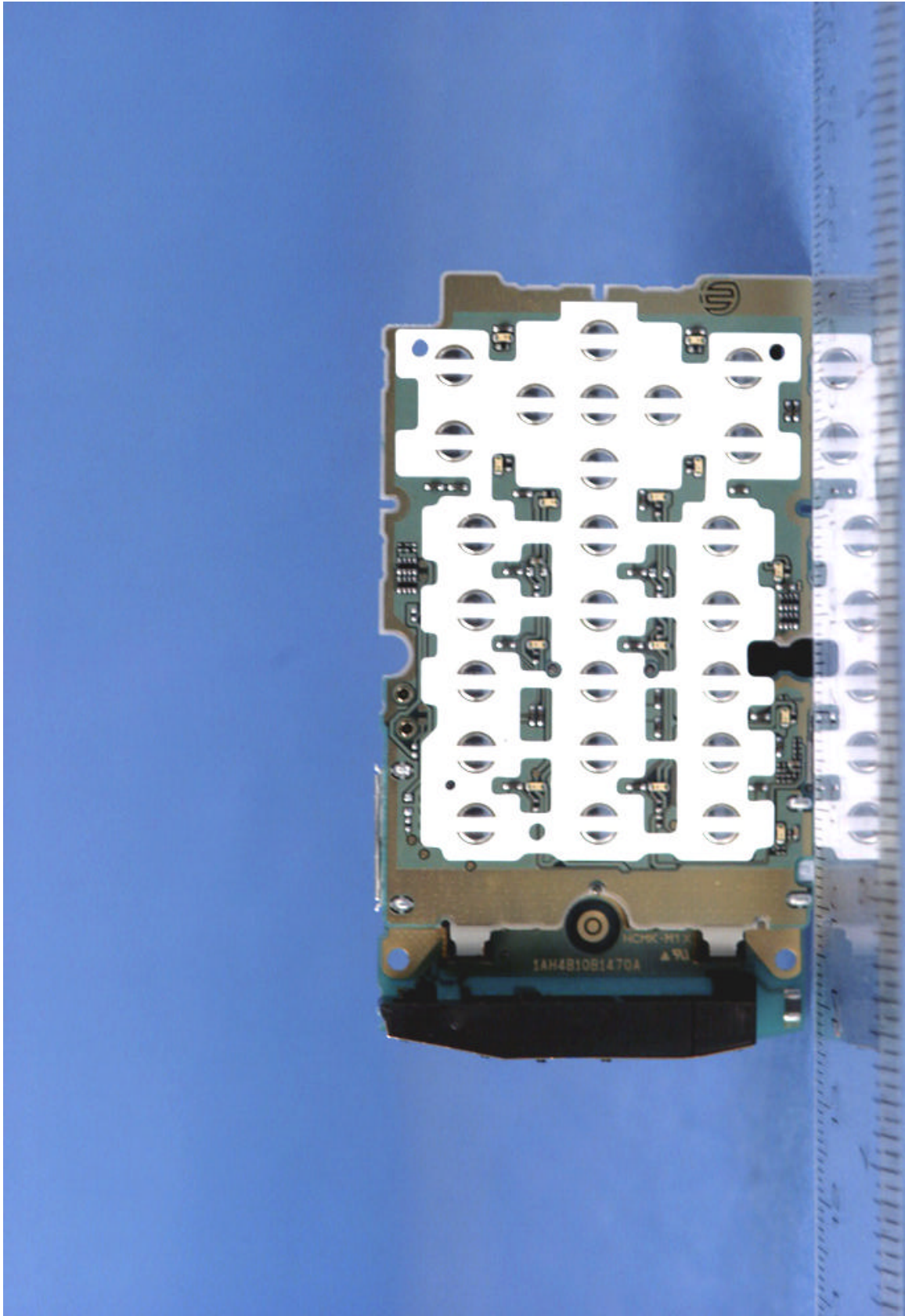
 Complete Wireless Labs	SANYO FCC ID: AEZSCP-66H	EUT Photographs
© 2006 PCTEST Lab.	Tri-Mode Dual-Band Phone w/ Bluetooth	Model: SCP-6600




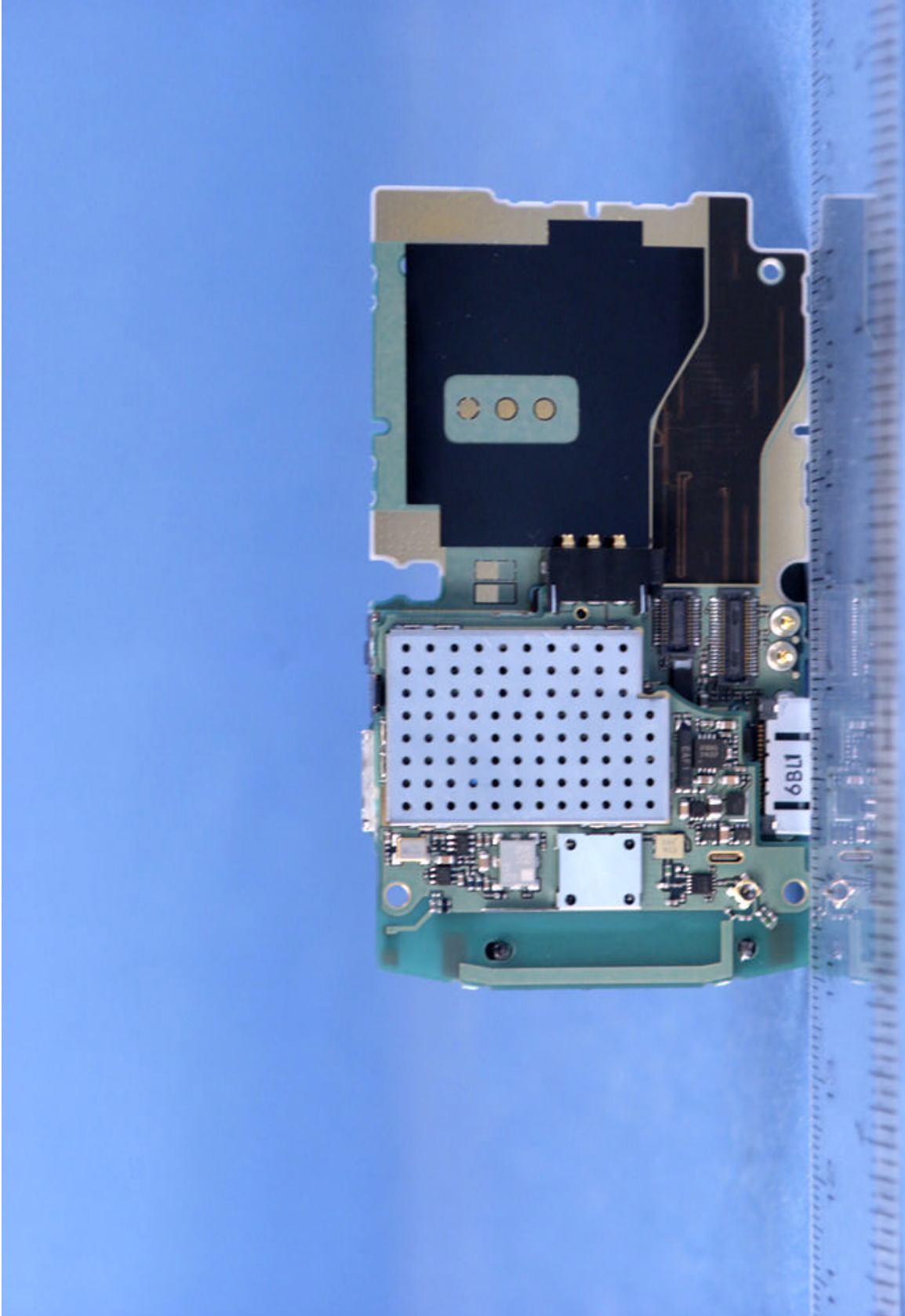
 <b>PCTEST</b> Complete Wireless Lab	SANYO FCC ID: AEZSCP-66H	EUT Photographs
© 2006 PCTEST Lab.	Tri-Mode Dual-Band Phone w/ Bluetooth	Model: SCP-6600




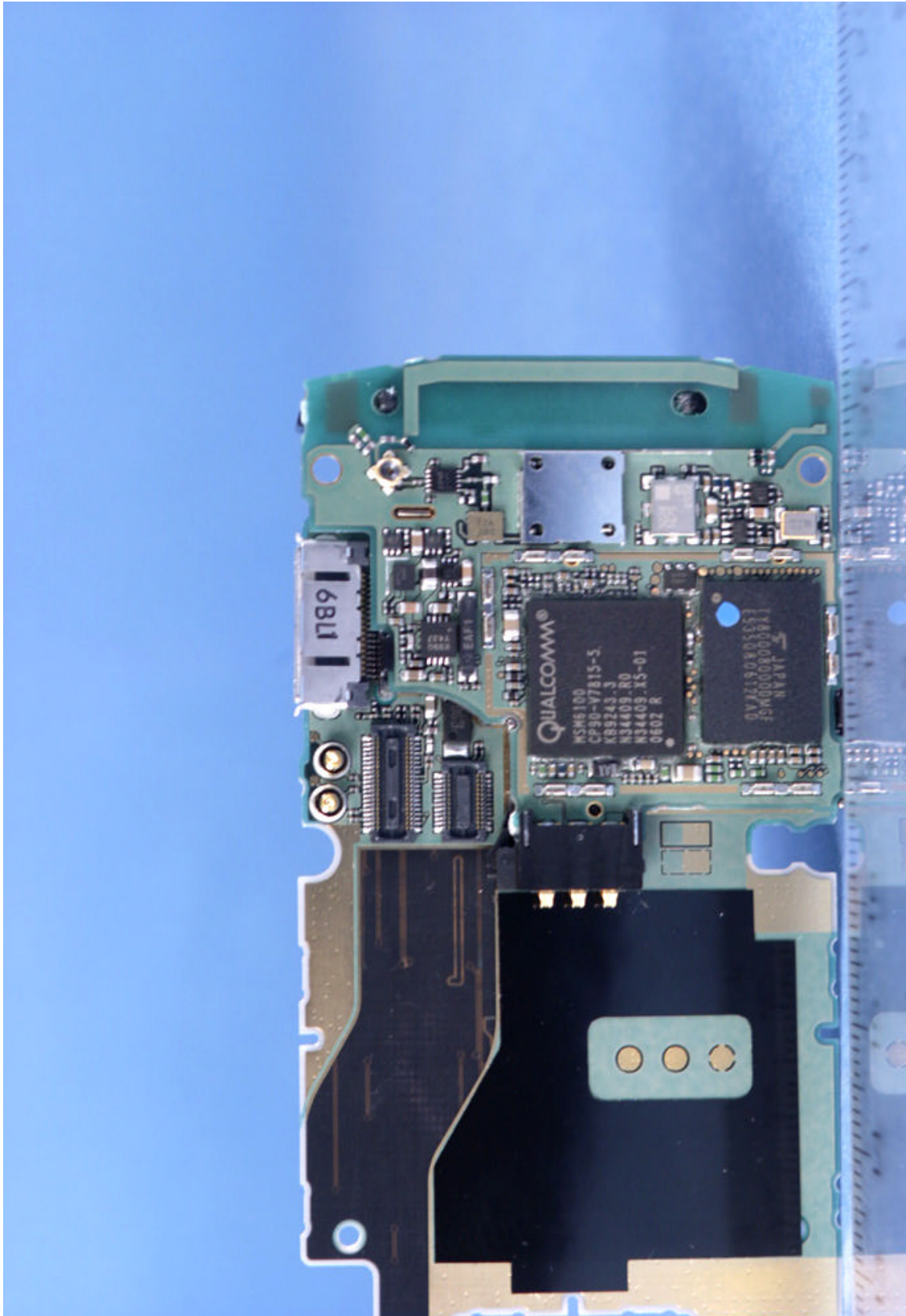
 <b>PCTEST</b> Complete Wireless Lab	SANYO FCC ID: AEZSCP-66H	EUT Photographs
© 2006 PCTEST Lab.	Tri-Mode Dual-Band Phone w/ Bluetooth	Model: SCP-6600




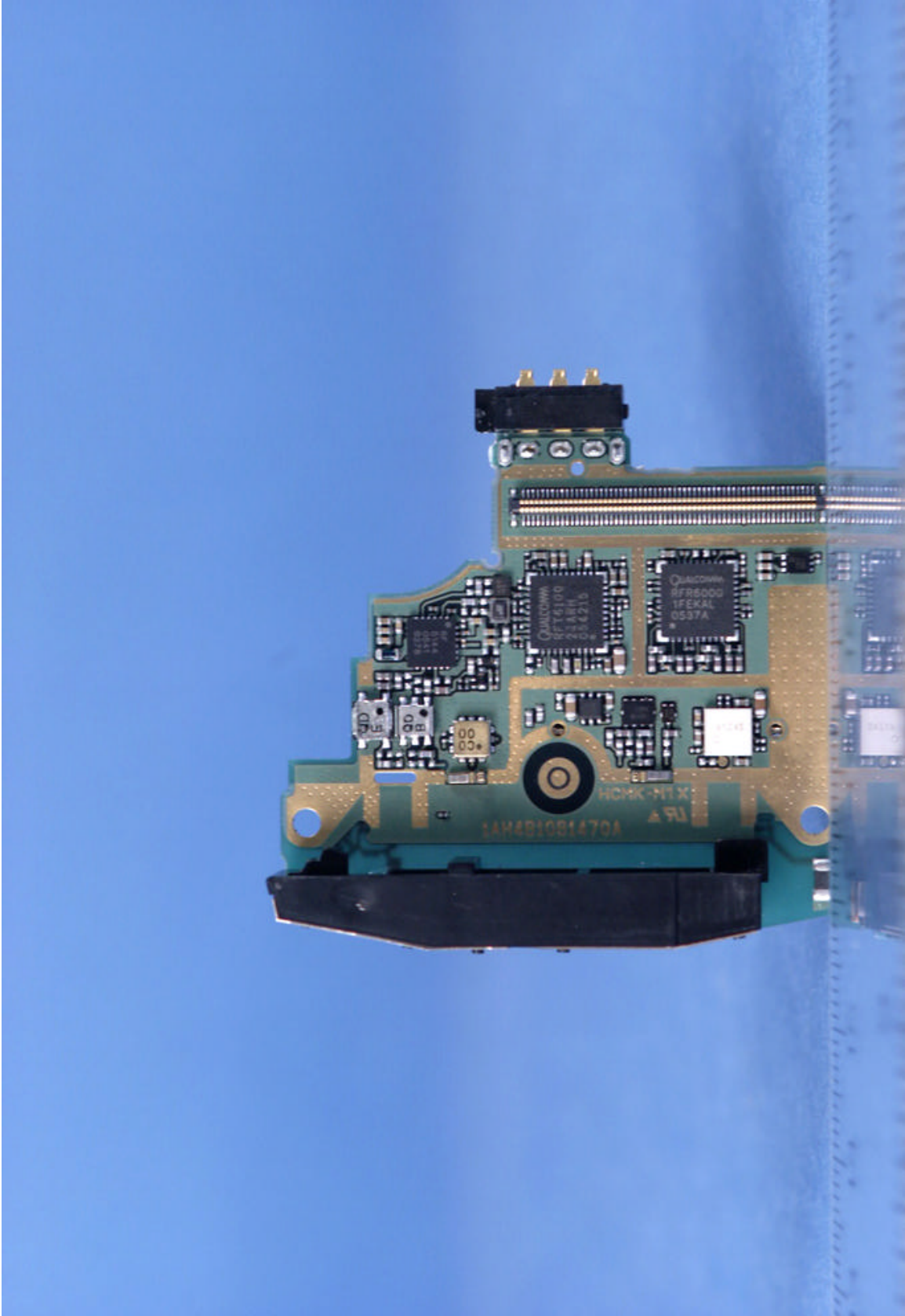
 Complete Wireless Lab	SANYO FCC ID: AEZSCP-66H	EUT Photographs
© 2006 PCTEST Lab.	Tri-Mode Dual-Band Phone w/ Bluetooth	Model: SCP-6600




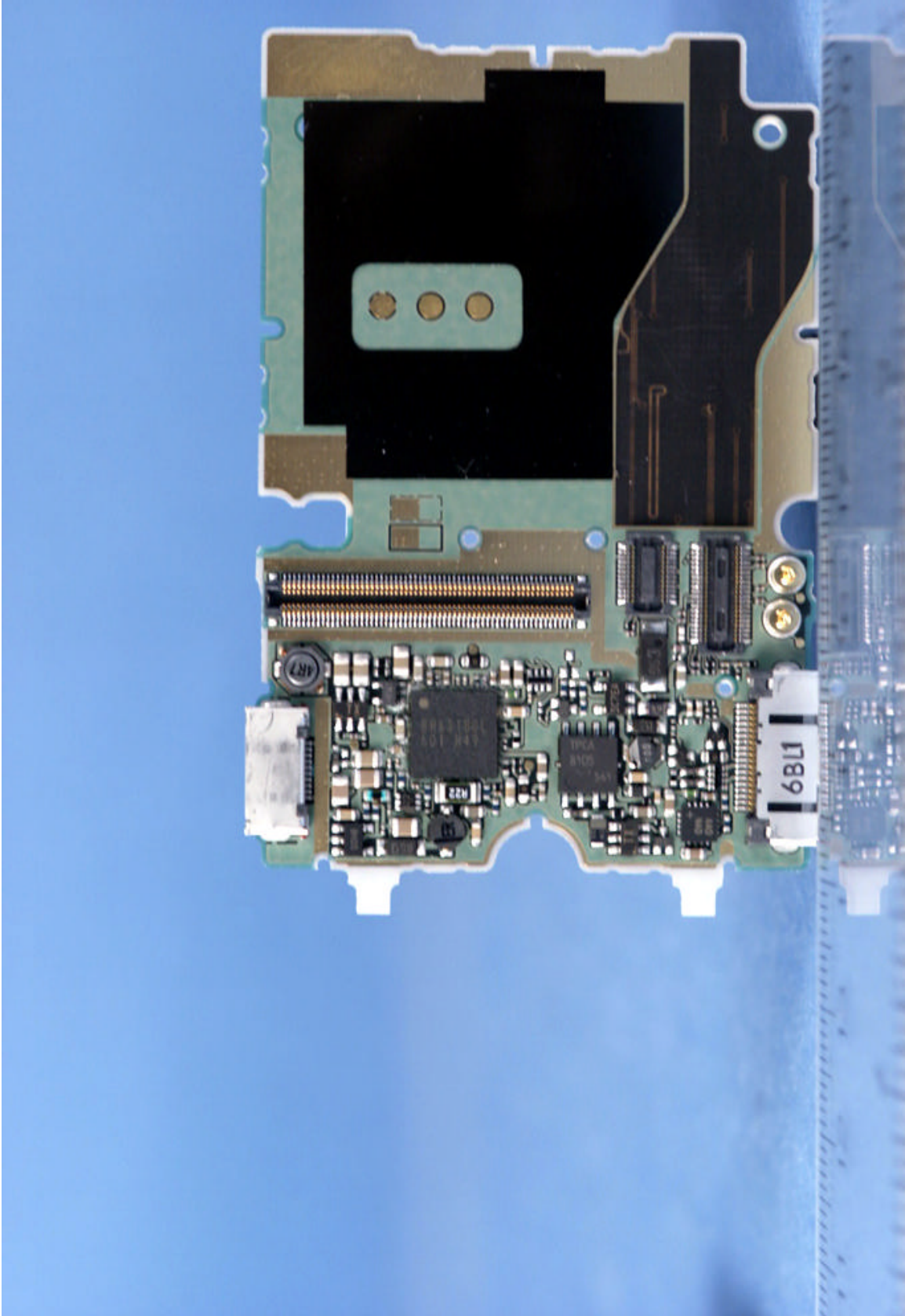
 Complete Wireless Lab	SANYO FCC ID: AEZSCP-66H	EUT Photographs
© 2006 PCTEST Lab.	Tri-Mode Dual-Band Phone w/ Bluetooth	Model: SCP-6600




 Complete Wireless Lab	SANYO FCC ID: AEZSCP-66H	EUT Photographs
© 2006 PCTEST Lab.	Tri-Mode Dual-Band Phone w/ Bluetooth	Model: SCP-6600

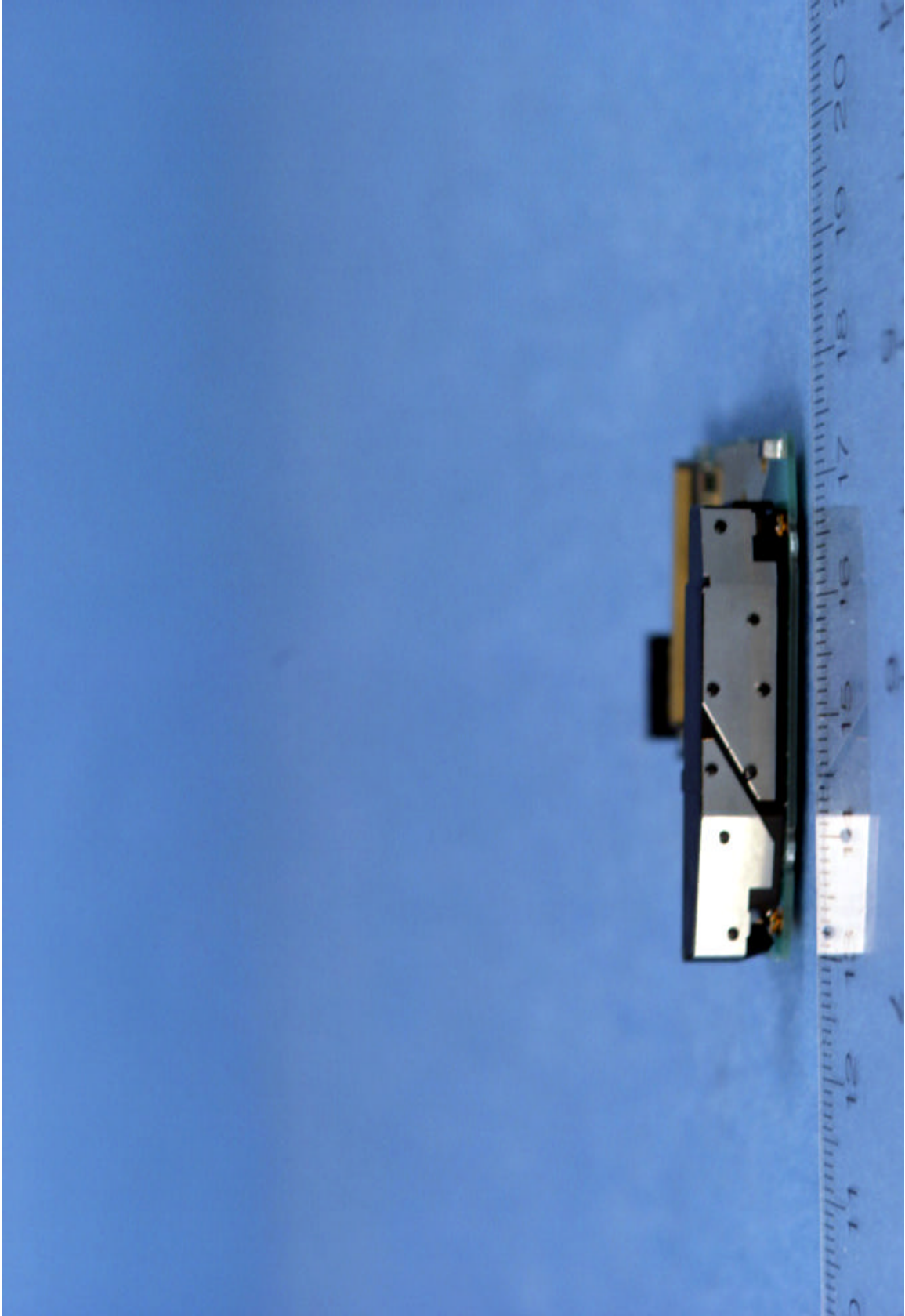



 Complete Wireless Lab	SANYO FCC ID: AEZSCP-66H	EUT Photographs
© 2006 PCTEST Lab.	Tri-Mode Dual-Band Phone w/ Bluetooth	Model: SCP-6600

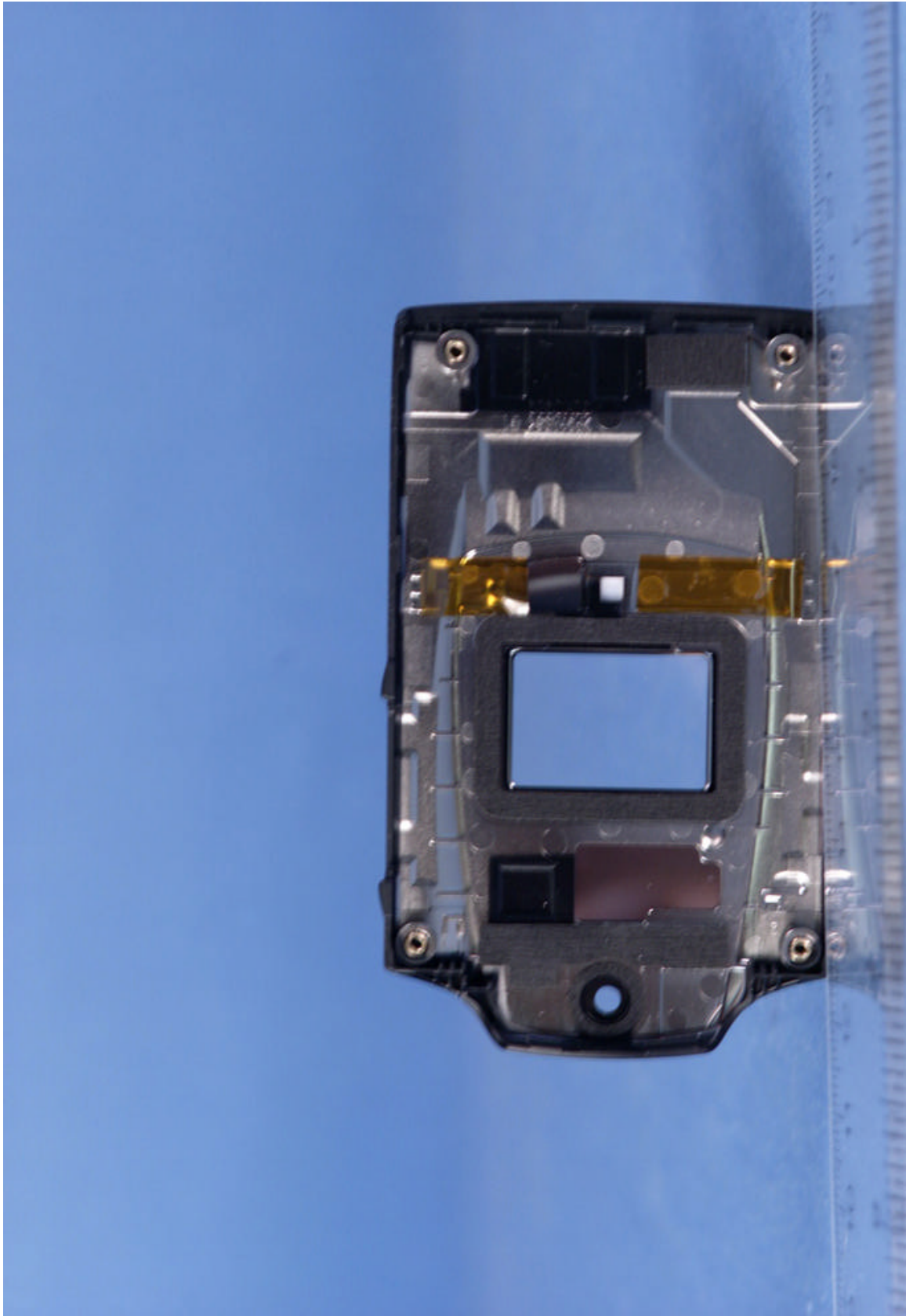



 Complete Wireless Lab	SANYO FCC ID: AEZSCP-66H	EUT Photographs
© 2006 PCTEST Lab.	Tri-Mode Dual-Band Phone w/ Bluetooth	Model: SCP-6600






 Complete Wireless Lab	SANYO FCC ID: AEZSCP-66H	EUT Photographs
© 2006 PCTEST Lab.	Tri-Mode Dual-Band Phone w/ Bluetooth	Model: SCP-6600



 Complete Wireless Lab	SANYO FCC ID: AEZSCP-66H	EUT Photographs
© 2006 PCTEST Lab.	Tri-Mode Dual-Band Phone w/ Bluetooth	Model: SCP-6600



 <b>PCTEST</b> Complete Wireless Lab	SANYO FCC ID: AEZSCP-66H	EUT Photographs
© 2006 PCTEST Lab.	Tri-Mode Dual-Band Phone w/ Bluetooth	Model: SCP-6600