

ADSL2+ 1 Port Bridge/Router

Model : 8012-B1 ADSL2+ Router / Enkom A1103

Quick Installation Guide Enkom

1 Package contents

2 Connect the voice splitter

3 Connect the Modem to the computer and power it on

4 LED Indicator specifications

LED Indicator	Power Indicator	Description
Power	Power Indicator	Power on
ADSL	ADSL	Indicates the connection is established
ACT	ACT	Flashing: Indicates the connection is being established
ADSL	ADSL	Flashing: Indicates the ADSL is receiving or transmitting data
ADSL	ADSL	Flashing: Indicates the modem has been connected with the computer via RJ45
LAN	LAN	Flashing: Indicates the computer is receiving or transmitting data

5 A) Dialup connection: for example, Under Windows XP

Select "Start" -> "Program" -> "Accessories" -> "Communications" -> "New Connection Wizard"

Click "Next" on the new connection wizard dialogue

5 B

Select "Connect to the Internet", and then click "Next"

Select "Set up my connection manually", and then click "Next"

5 C

Select "Connect" using a broadband connection that requires a user name and password, and then click "Next"

Type your ISP name or other names, and then click "Next"

5 D

Type the user name and password provided by your ISP and click "Next"

Select "Add a shortcut to this connection to my desktop", and click "Finish" after completing the new connection wizard.

5 E

Run adsl connection on the desktop and click "Connect". The system will establish the connection automatically.

If the above picture appears, it indicates you have successfully completed the setting and you can access Internet now.

ADSL2+ 1 Port Bridge/Router

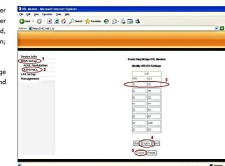
Model : 8012-B1 ADSL2+ Router / Enkom A1103

Quick Installation Guide Enkom

supports VPI/VCI auto matching technology, and is integrated with most VPI/VCI and it usually works with most of ISPs without configuration. If the cable has been correctly connected, your broadband account and password are correct, and the ADSL indicator is always on, but you can not dial up successfully, Please inquire your local ISP to obtain the correct VPI/VCI value. Follow the operating steps below.

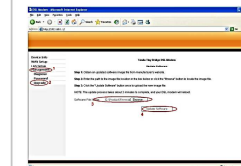
Please set the IP address of your computer as 192.168.1.XXX(XXX is any number between 2-254),and the Subnet Mask as 255.255.255.0. Open any Web browser (for example, Internet Explorer) and enter <http://192.168.1.1> in the address field, then press "Enter". Input the login information in the box: User Name: admin; Password: admin; then click "OK"

Click "WAN Setup" button---->"SetM PVCs" to enter the setting interface. Please change the VPI/VCI value to your local VPI/VCI value. Click "Apply" and "Save" buttons, and then reboot the device to activate the settings as shown in the right figure.



Software upgrade:

1. Download the latest software from manufacturer's website.
2. Upgrade the system software.



Note:

1. The Modem adopts lightning-proof technology. For your safety, however, you are highly recommended to disconnect power supply and telephone line in thunderstorm-affected weather.
2. The above operations are only applicable to a FCC dialup implementation using an ADSL2+ modem. If you are using a Router, please refer to the Router's user guide.

FCC STATEMENT

This device complies with Part 15 of the FCC Rules. Operation is subject to the following two conditions: (1) This device may not cause harmful interference, and (2) this device must accept any interference received, including interference that may cause undesired operation.

This equipment has been tested and found to comply with the limits for a Class B digital device, pursuant to Part 15 of the FCC Rules. These limits are designed to provide reasonable protection against harmful interference in a residential installation. This equipment generates, uses and can radiate radio frequency energy and, if not installed and used in accordance with the instructions, may cause harmful interference to radio communications.

However, there is no guarantee that interference will not occur in a particular installation. If this equipment does cause harmful interference to radio or television reception, which can be determined by turning the equipment off and on, the user is encouraged to try to correct the interference by one of the following measures:

- Reorient or relocate the receiving antenna.
- Increase the separation between the equipment and receiver.
- Connect the equipment into an outlet on a circuit different from that to which the receiver is connected.
- Consult the dealer or an experienced radio/TV technician for help.

F.L. Caution: any changes or modifications not expressly approved by the party responsible for compliance could void the user's authority to operate this equipment.

This transmitter must not be co-located or operating in conjunction with any other antenna or transmitter.

TENDA is the registered trademark of Shenzhen Tenda Technology Co., Ltd. All the products and product names mentioned herein are the trademarks or registered trademarks of their respective owners. ©2011 TENDA All Rights Reserved.

Manufacturer: SHENZHEN TENDA TECHNOLOGY CO., LTD.
Address: Tenda Industrial Park, No. 36-1, Shiling Rd, Shiyuan Town, Bao'an District, Shenzhen, P.R. China 518108
Telephone: 0755-27705718
E-mail: sales@tenda.com.cn
Tenda Website: <http://www.tenda.com.cn>