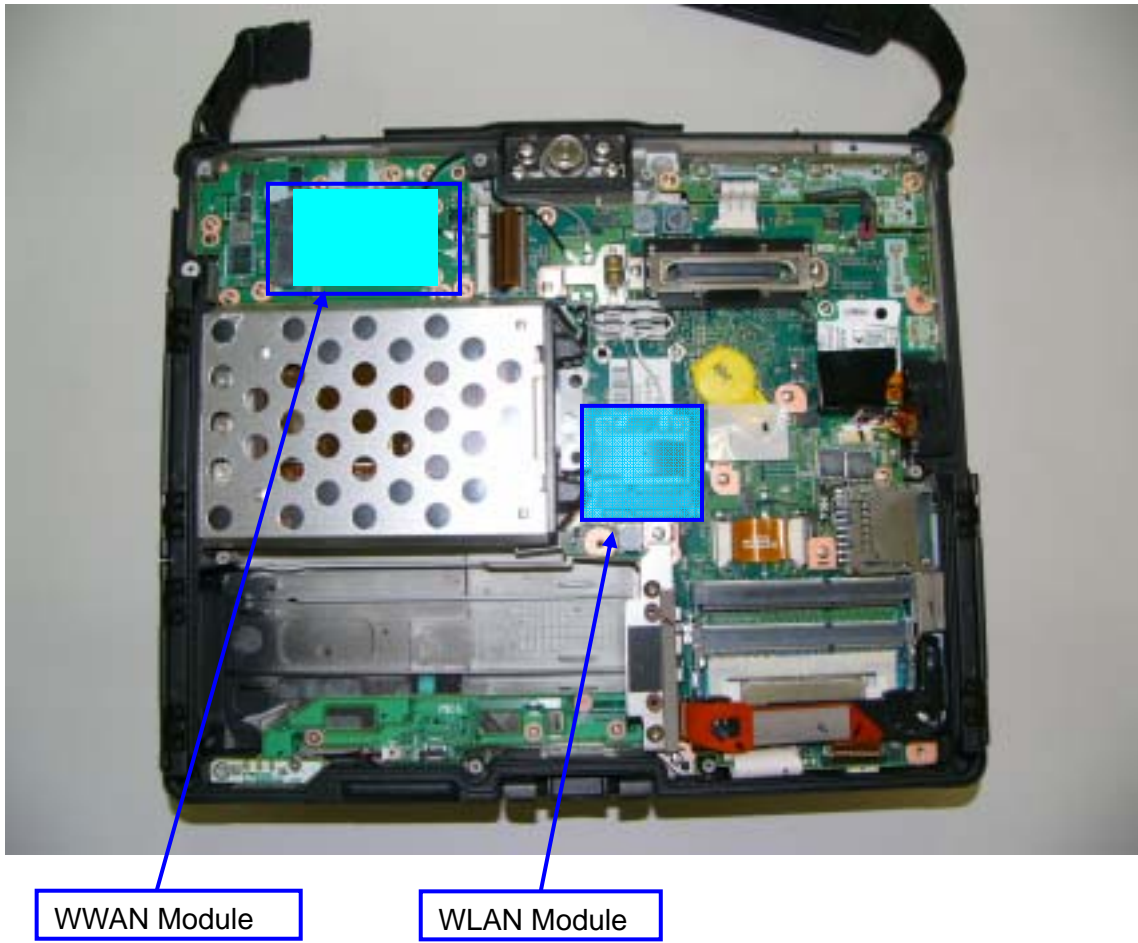


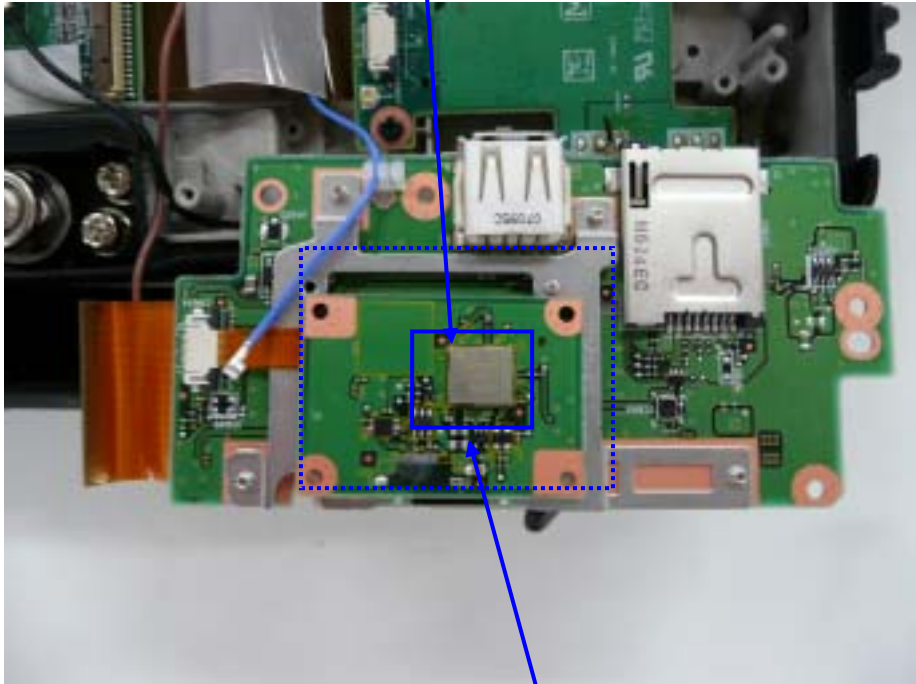
## 2. Module Position





Reverse Side

Reverse side of RF PWB



Bluetooth Module

### 3. Module Photo

1) WLAN: Model N5HZC0000054 (Azurewave Technologies Inc. AW-NE126H).  
This module has no own FCC ID.



WLAN Exterior Top View



WLAN Exterior Bottom View



WLAN inside Top View



WLAN inside Bottom View

## 2) Bluetooth



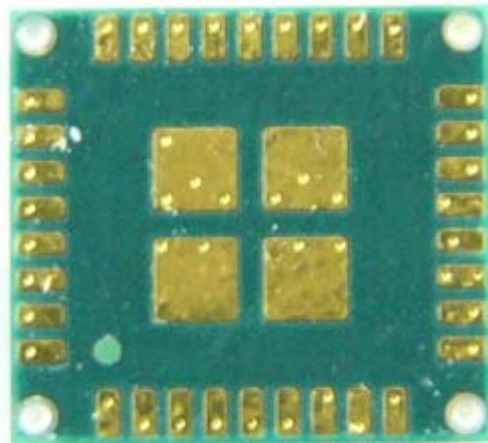
Bluetooth Card Top View



Bluetooth Card Bottom View



Bluetooth Module inside Top View



Bluetooth Module inside Bottom View

3) WWAN (Gobi2000) Photo



WWAN Top View



WWAN Bottom View



WWAN Inside Top View

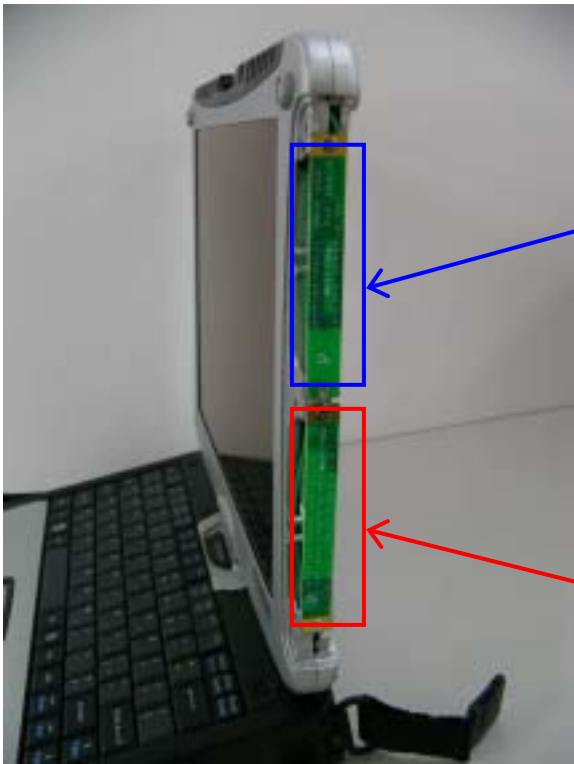


WWAN Inside Bottom View



#### 4. CF-19mk4 Antenna Position





WWAN Aux RX Antenna

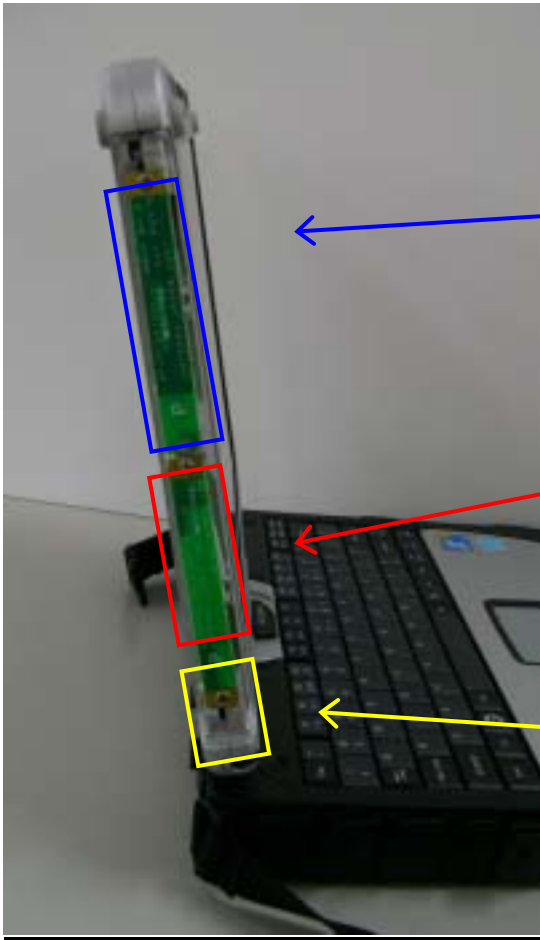
WLAN Main TX/RX Antenna



WWAN Aux RX Antenna



WLAN Main TX/RX Antenna



← WWAN Main TX/RX Antenna

← WLAN Aux TX/RX Antenna

← Bluetooth TX/RX Antenna



WWAN Main TX/RX Antenna



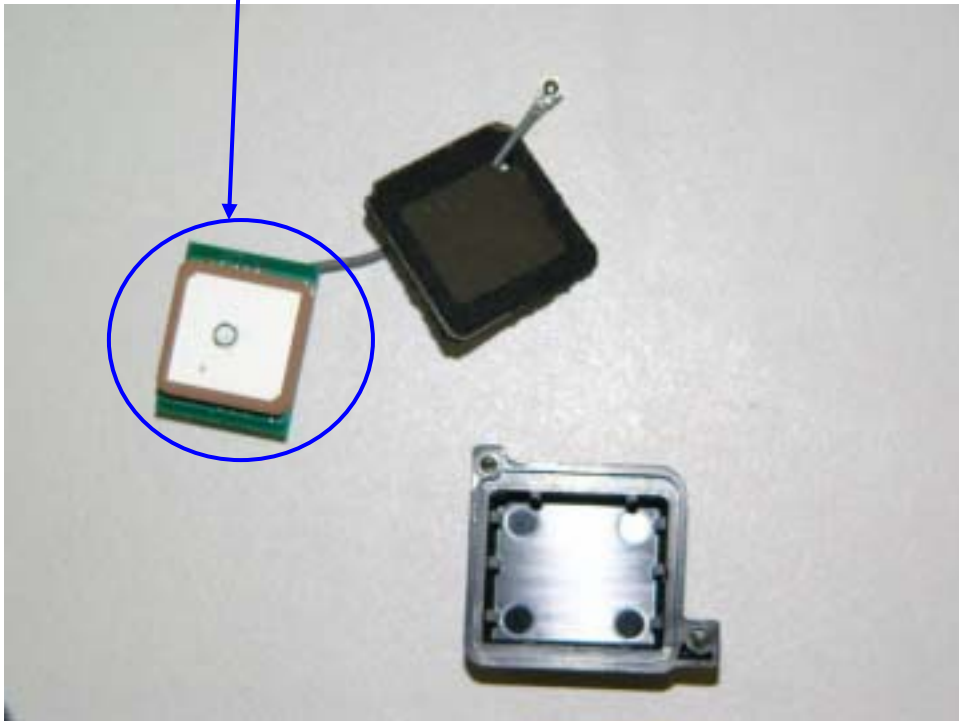
WLAN Aux TX/RX Antenna



Bluetooth TX/RX Antenna



Remove Cover



GPS Module Antenna

## 5. Antenna Specification

WLAN Main TX/RX Antenna: Pattern Antenna

(Inverted-F type: 0.86dBi max 2.4GHz)

WLAN Aux TX/RX Antenna: Pattern Antenna

(Inverted-F type: 2.93dBi max 2.4GHz)

Bluetooth TX/RX Antenna: Pattern Antenna

(Inverted-F type: 0.80dBi max)

WWAN Main TX/RX Antenna: Pattern Antenna

(Inverted-F type: -0.46dBi max 850MHz)

(Inverted-F type: 1.96dBi max 1900MHz)

WWAN Aux RX Antenna: Pattern Antenna (Inverted-F type RX only)

GPS RX Antenna: Module Antenna