

**EXHIBIT 9****INTERNAL PHOTOGRAPHS**

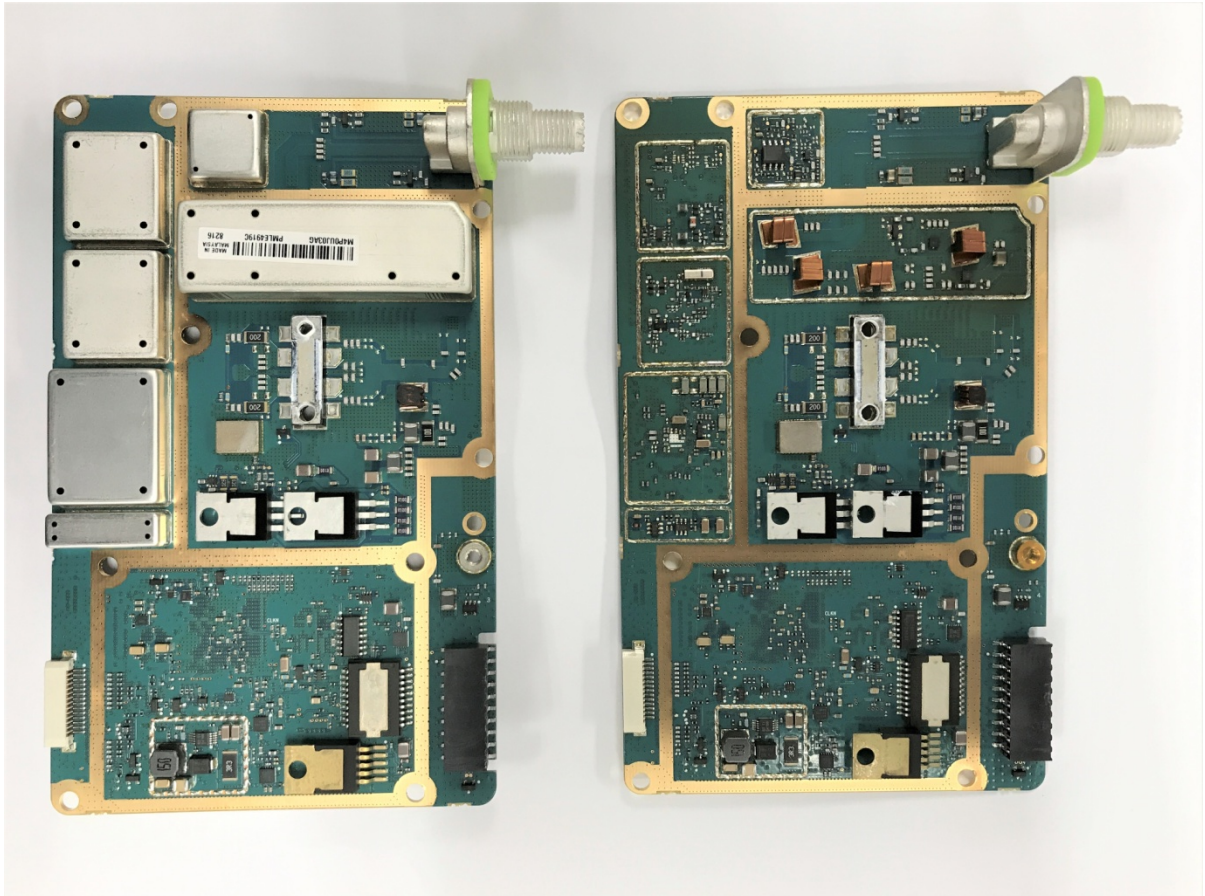
(Pursuant to FCC Part 2.1033(b)(7), 2.1033(c)(12) and RSP 100 Sec 8.3)

The following photographs are attached.

Exhibit

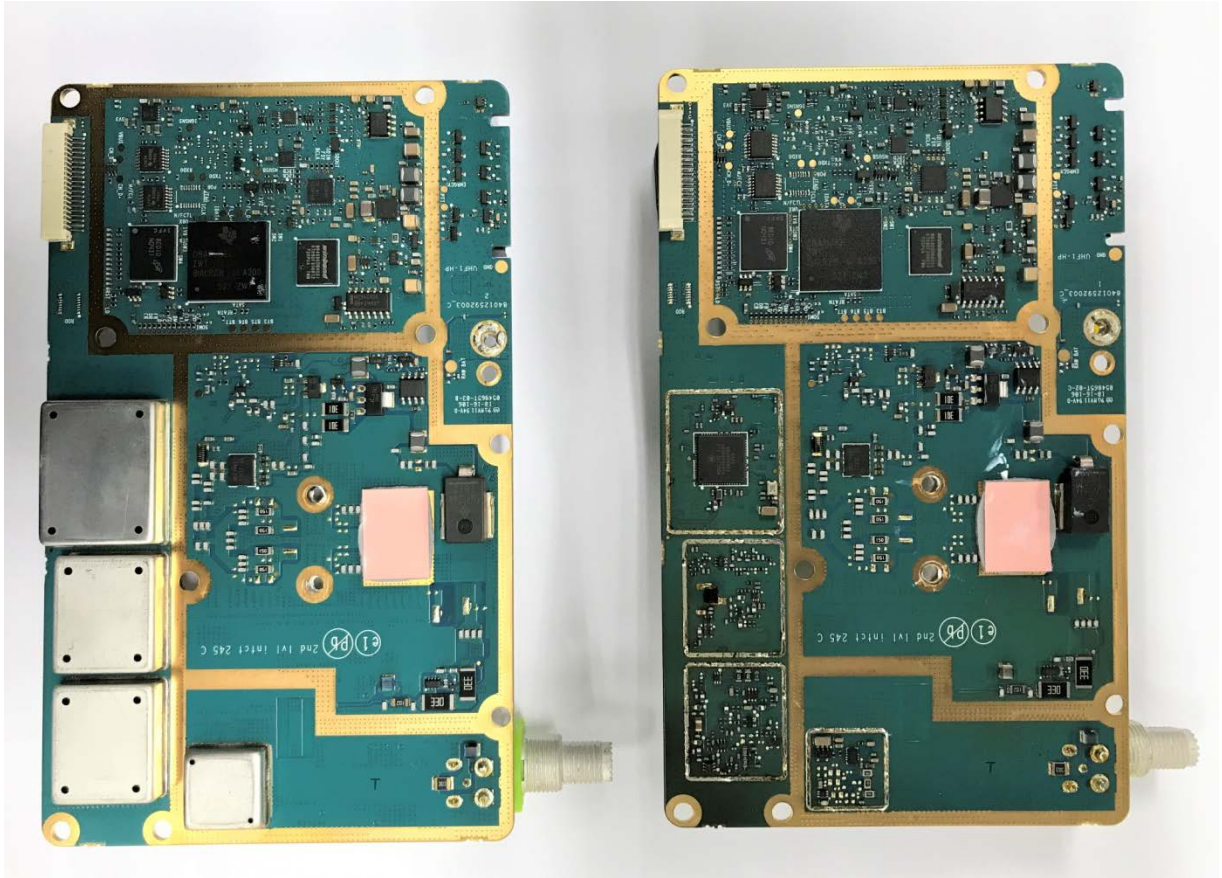
- |    |   |    |
|----|---|----|
| 1. | RF board with and without shields (Top)         | 9A |
| 2. | RF board with and without shields (Bottom)      | 9B |
| 3. | RF Board with Chassis and control head (Top)    | 9C |
| 4. | RF Board with Chassis and control head (Bottom) | 9D |
| 5. | GOB board (Top)                                 | 9E |
| 6. | GOB Board with shield (Bottom)                  | 9F |
| 7. | GOB Board without shields (Bottom)              | 9G |
| 8. | Exploded View                                   | 9H |

**Exhibits 9A**



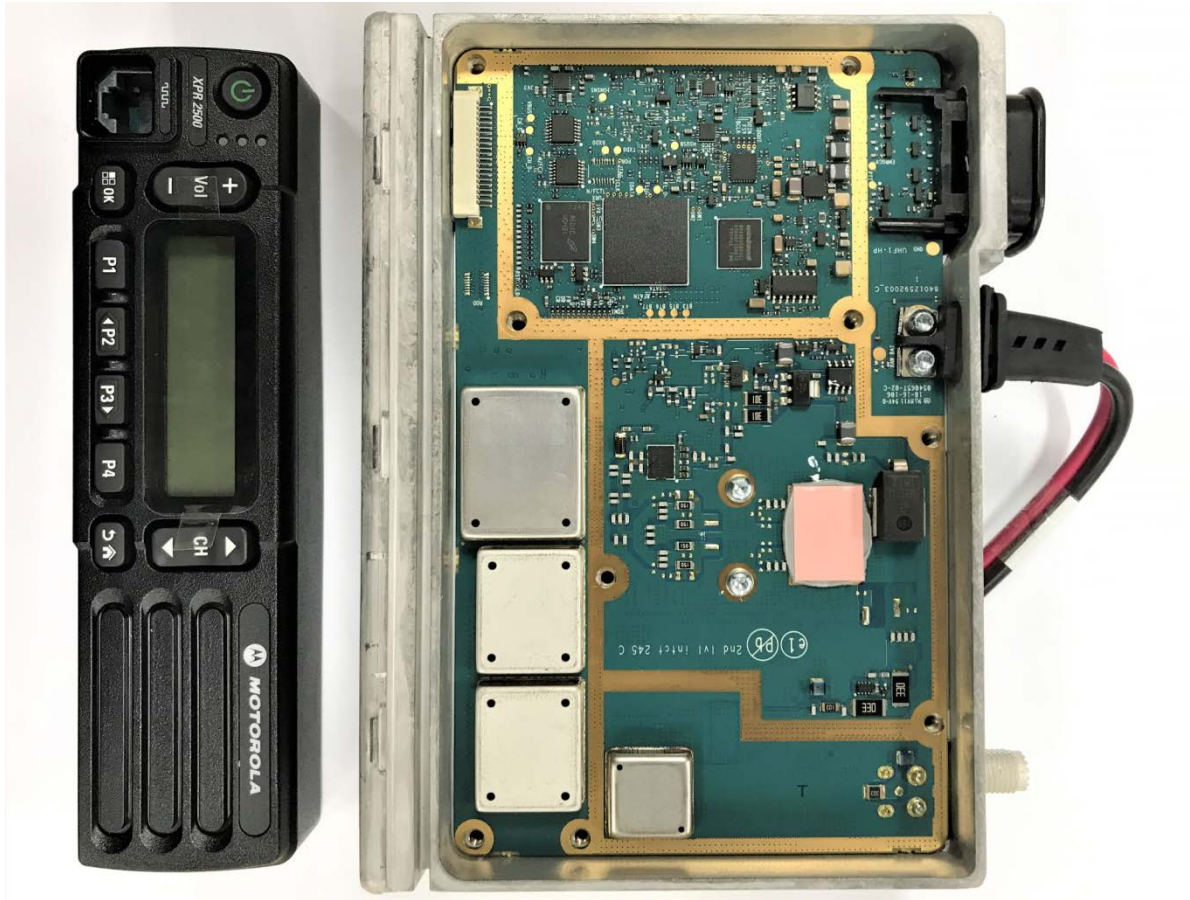
**RF board with and without shields (Top)**

**Exhibits 9B**



**RF board with and without shields (Bottom)**

**Exhibits 9C**



**RF board with chassis and control head (Top)**

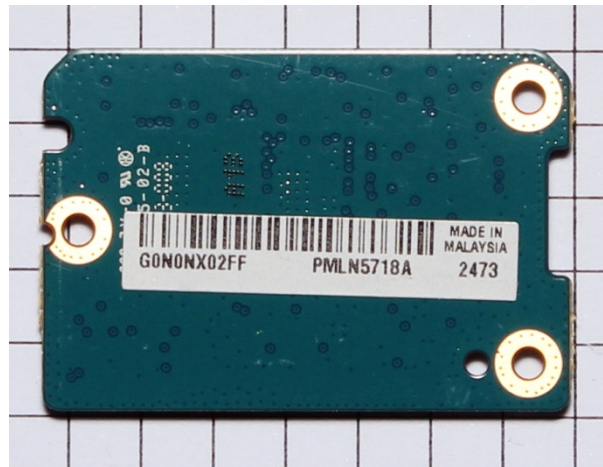


Exhibits 9D



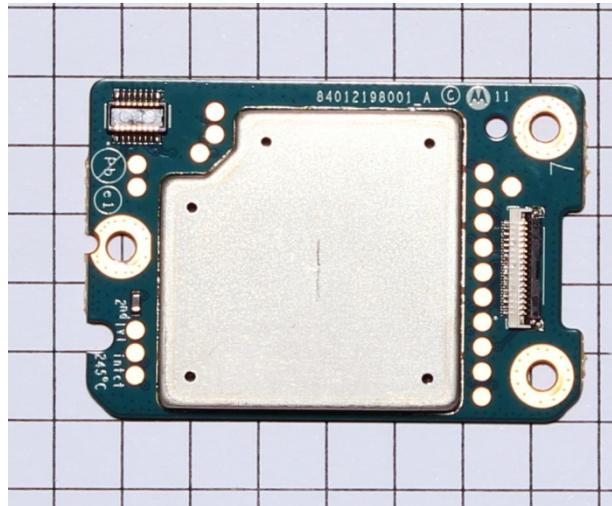
RF board with chassis and control head (Bottom)

## Exhibits 9E

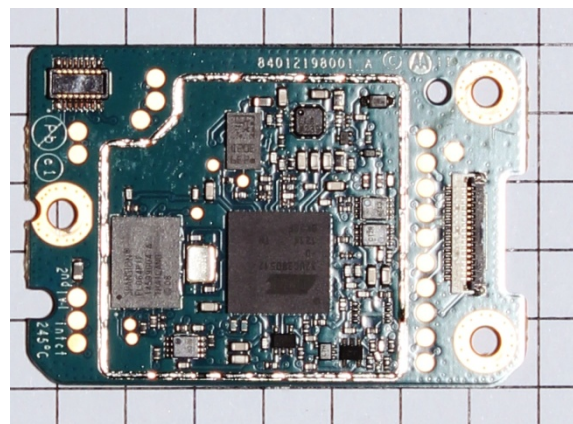


## GOB board (Top)

## Exhibits 9F

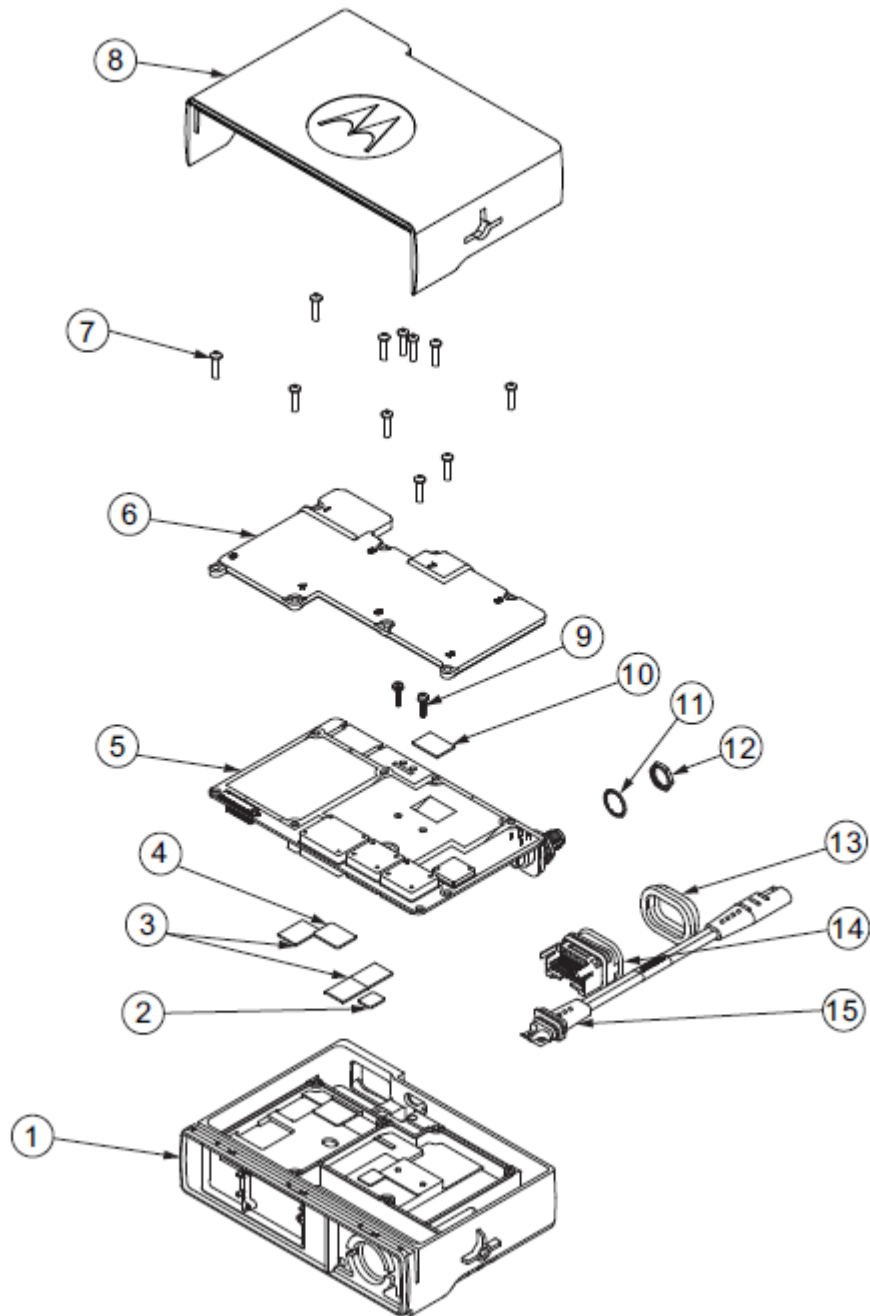


### GOB board with shield (Bottom)

**Exhibits 9G**

**GOB board without shield (Bottom)**

**Exhibits 9H**



**Exploded View**