

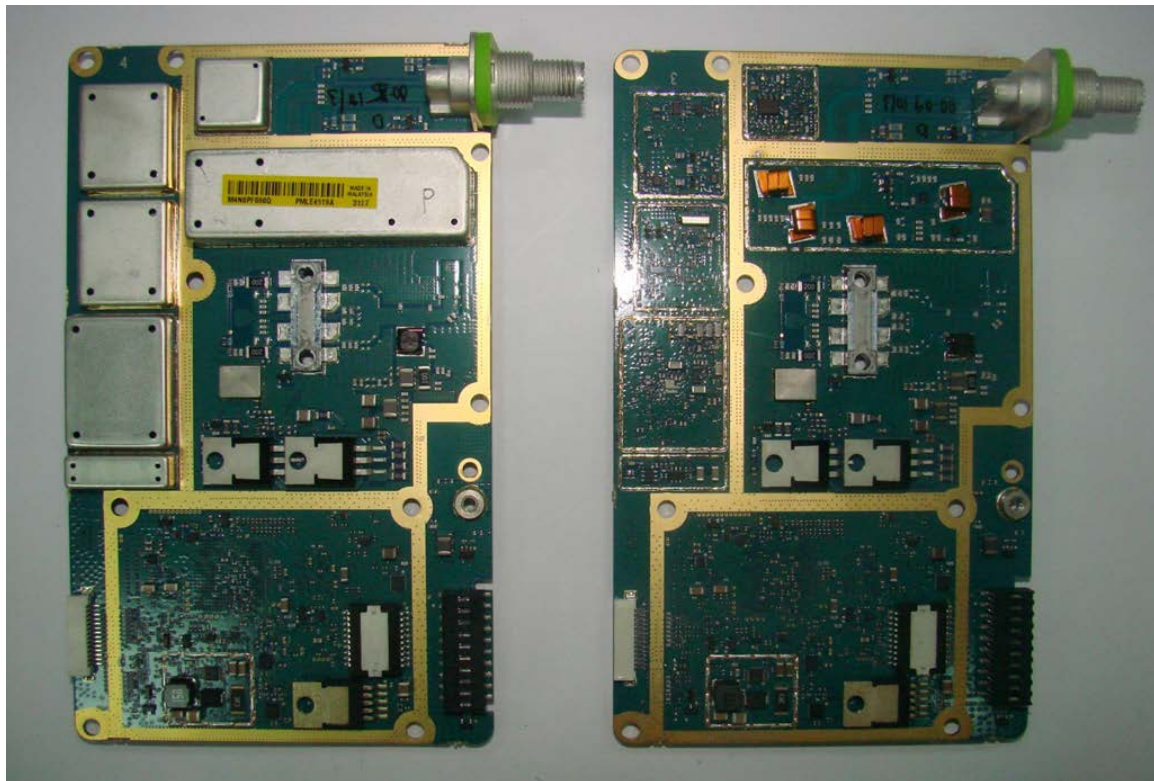
EXHIBIT 9**INTERNAL PHOTOGRAPHS**

The following photographs are attached.

Exhibit

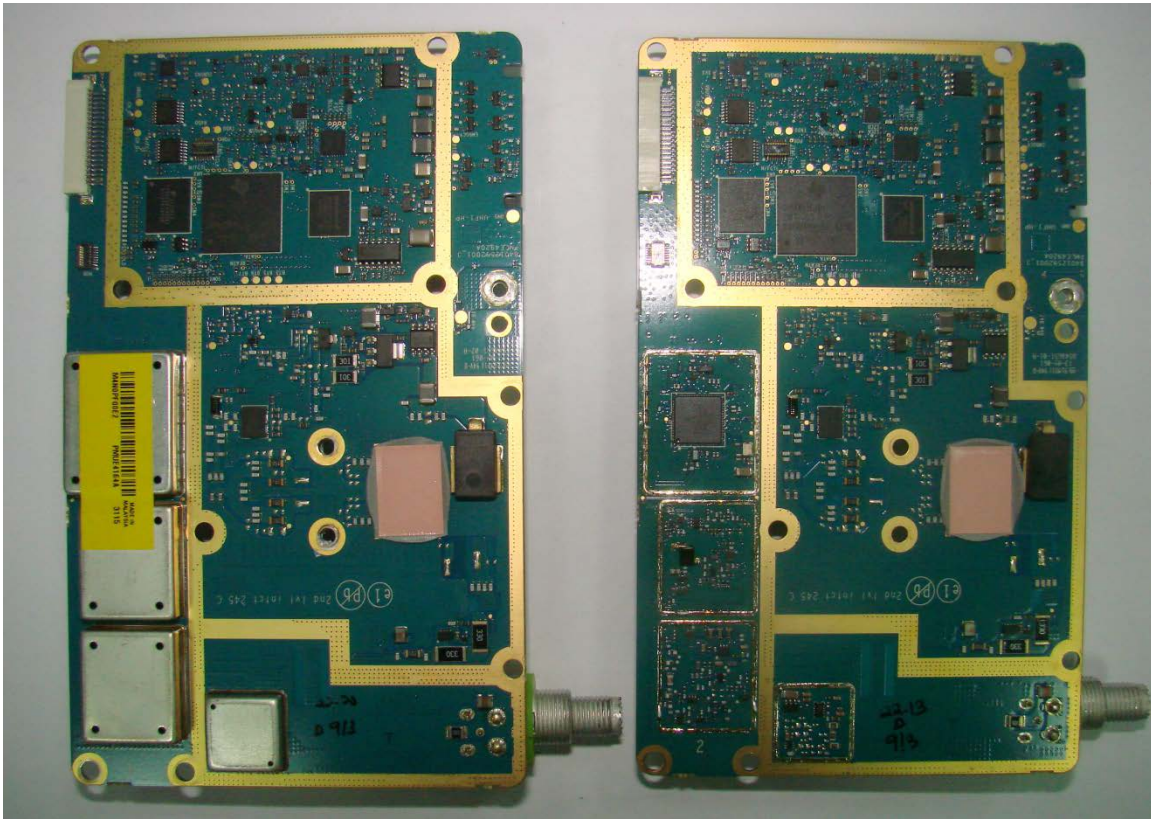
- | | | |
|----|--|----|
| 1. | RF board with and without shields (Top) | 9A |
| 2. | RF board with and without shields (Bottom) | 9B |
| 3. | Chassis and control head (Top) | 9C |
| 4. | Chassis and control head (Bottom) | 9D |
| 5. | GOB board with and without shields | 9E |

Exhibits 9A



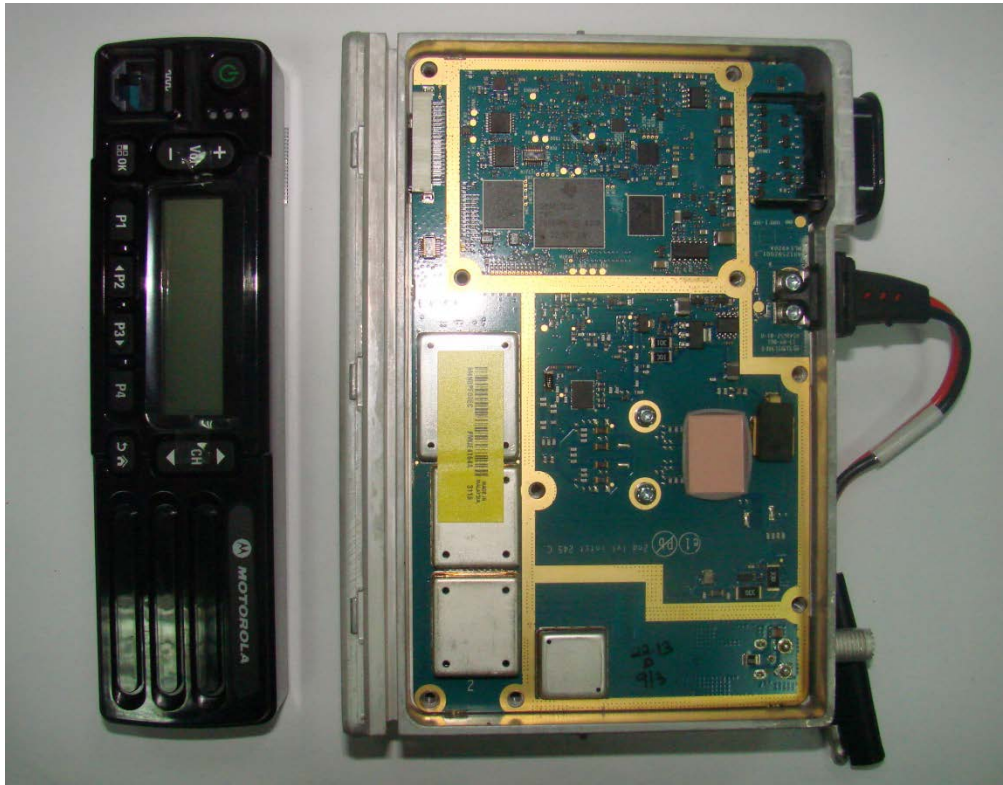
RF board with and without shields (Top)

Exhibits 9B



RF board with and without shields (Bottom)

Exhibits 9C



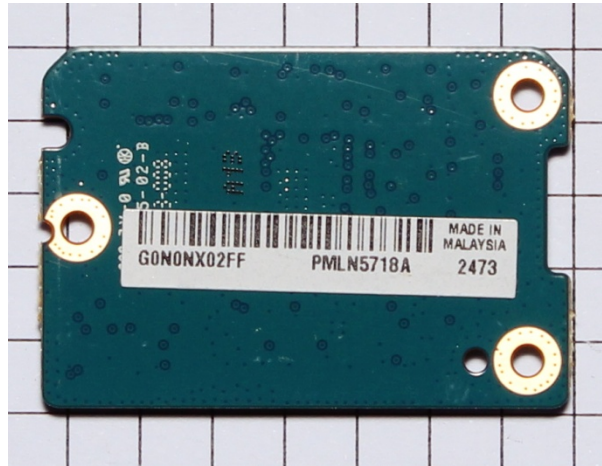
RF board with chassis and control head (Top)

Exhibits 9D

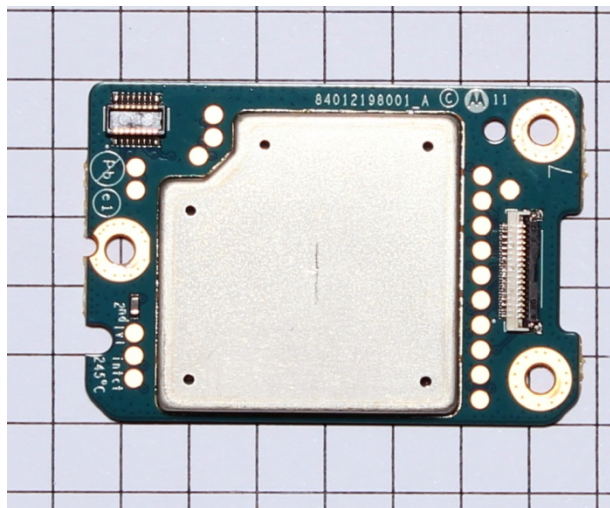


RF board with chassis and control head (Bottom)

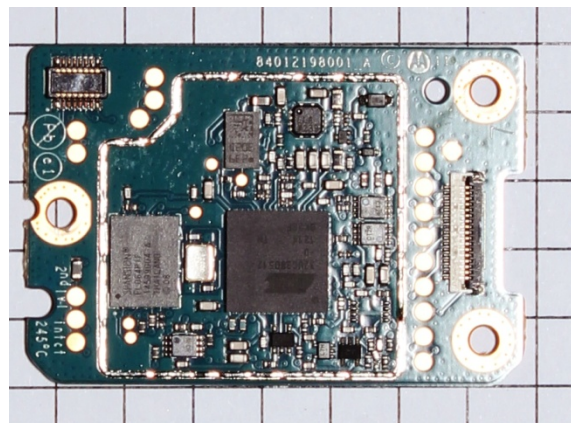
Exhibits 9E



GOB board (Top)



GOB board with shield (Bottom)



GOB board without shield (Bottom)