

Internal Photographs

The following photographs are attached.

Exhibit

- | | |
|--|----|
| 1. MOTOTRBO UHF complete internal open up view | 9A |
| 2. MOTOTRBO UHF Chassis and RF Board | 9B |
| 3. MOTOTRBO UHF RF Board with shields (Top) | 9C |
| 4. MOTOTRBO UHF RF Board without shield (Top) | 9D |
| 5. MOTOTRBO UHF RF Board with shield (Bottom) | 9E |
| 6. MOTOTRBO UHF RF Board without shield (Bottom) | 9F |

Exhibits 9A



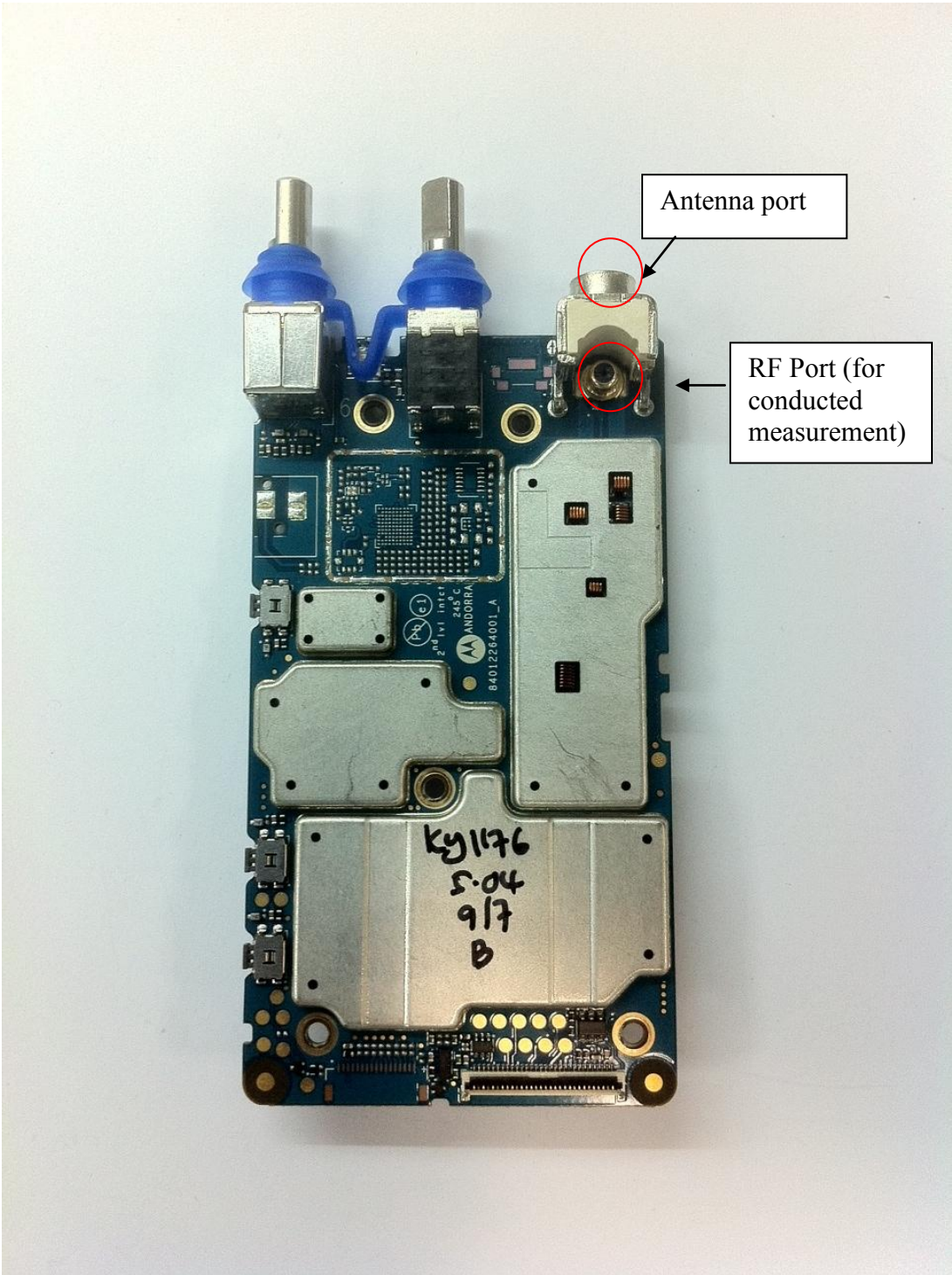
MOTOTRBO UHF complete internal open up view

Exhibit 9B



MOTOTRBO UHF Chassis and RF Board

Exhibit 9C



MOTOTRBO UHF RF Board with shields (Top)

Exhibit 9D



MOTOTRBO UHF RF Board without shield (Top)

Exhibit 9E



MOTOTRBO UHF RF Board with shield (Bottom)

Exhibit 9F



MOTOTRBO UHF RF Board without shield (Bottom)