

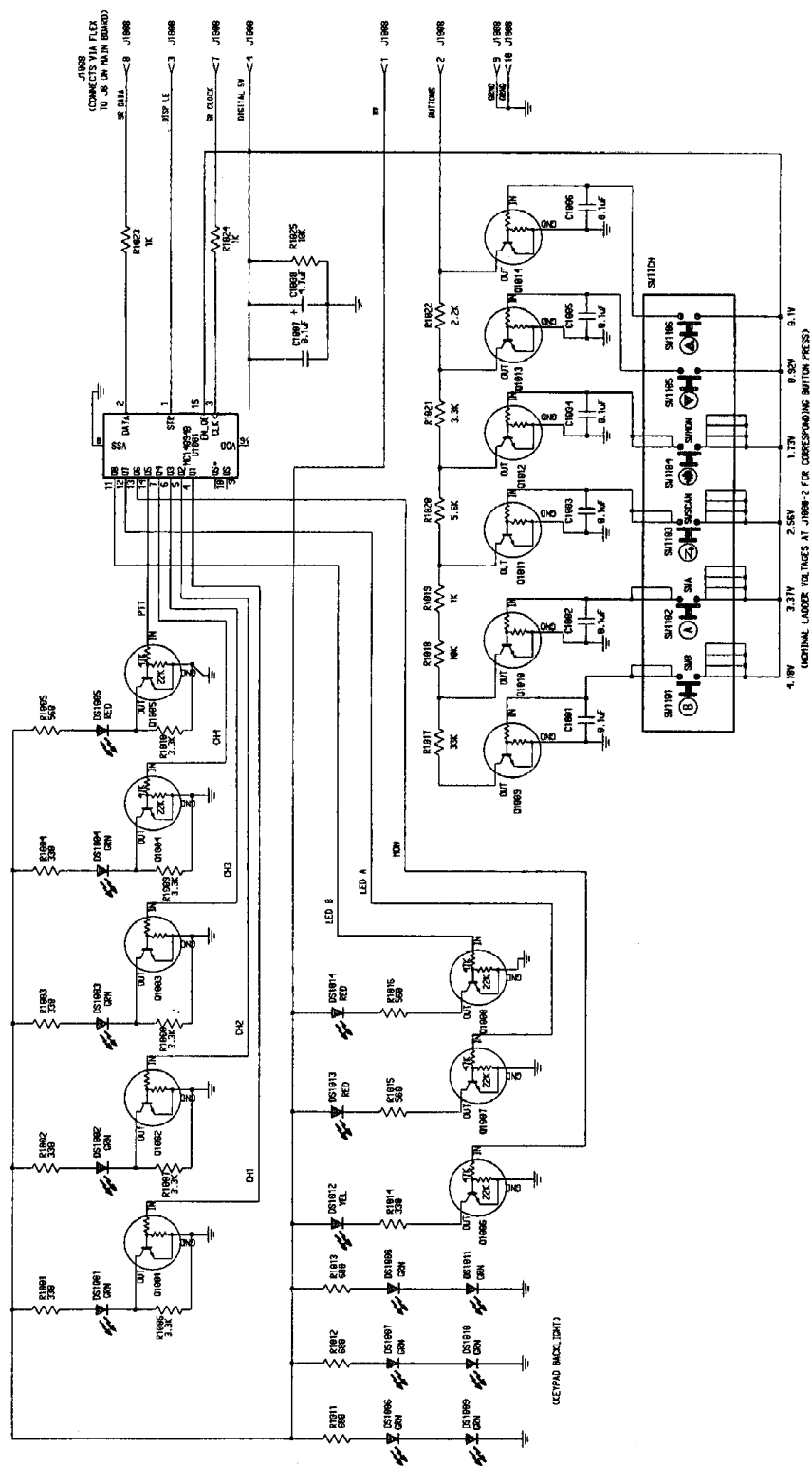
### **Circuit Diagrams**

This exhibit contains schematic diagrams of the transmitter in the same general format that will appear in the service manual. These diagrams show the entire transmitter system from the microphone push-to-talk switch to the antenna.

<b>EXHIBIT 5A-1</b>	Keypad/Display Circuit Board (4 Channel)
<b>EXHIBIT 5A-2</b>	Keypad/Display Circuit Board (24 Channel)
<b>EXHIBIT 5B-1</b>	Main Circuit Board, Sheet 1 of 2 (RF Section),
<b>EXHIBIT 5B-2</b>	Main Circuit Board, Sheet 2 of 2 (Audio/Logic Section)
<b>EXHIBIT 5C</b>	Conventional Hand Held Microphone
<b>EXHIBIT 5D</b>	DTMF Hand Held Microphone
<b>EXHIBIT 5E</b>	Control Station Microphone
<b>EXHIBIT 5F</b>	AC-DC Converter
<b>EXHIBIT 5G</b>	Handset Microphone

**Applicant:** Motorola, Inc.

**Equipment Type:** ABZ99FT4046

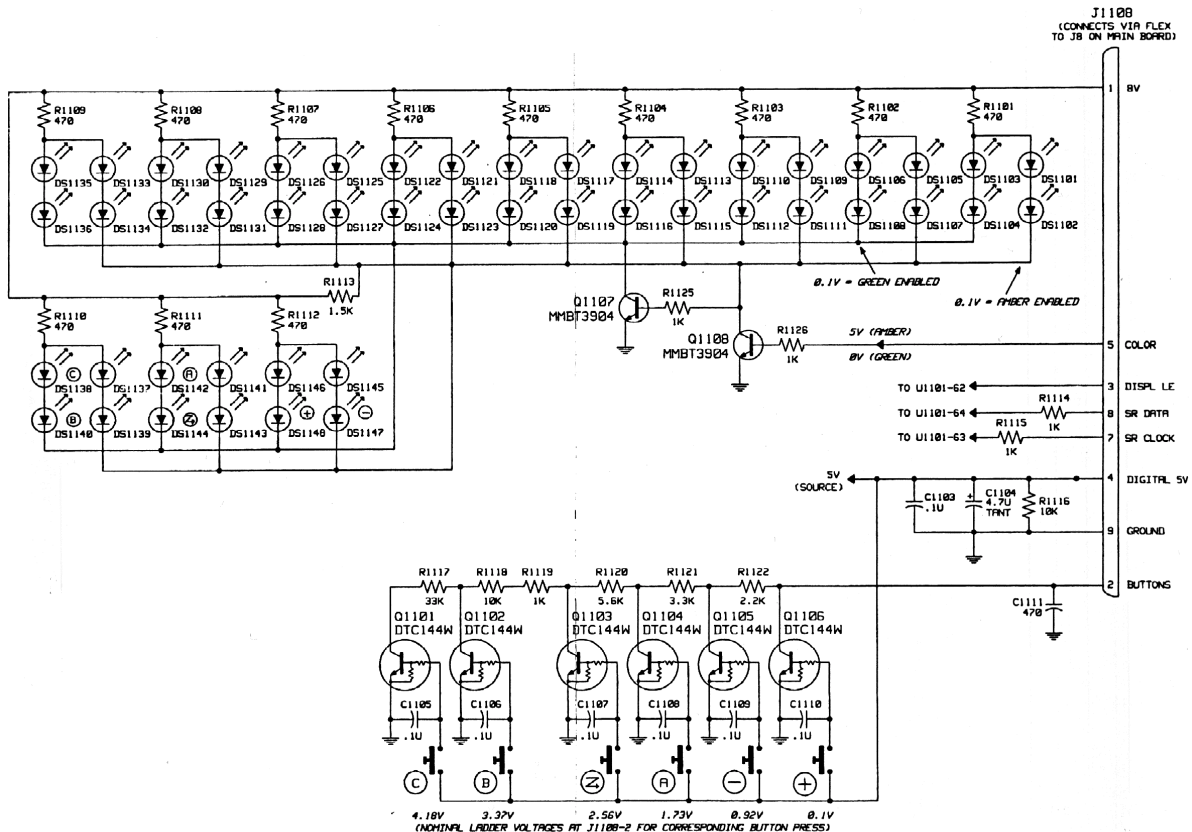
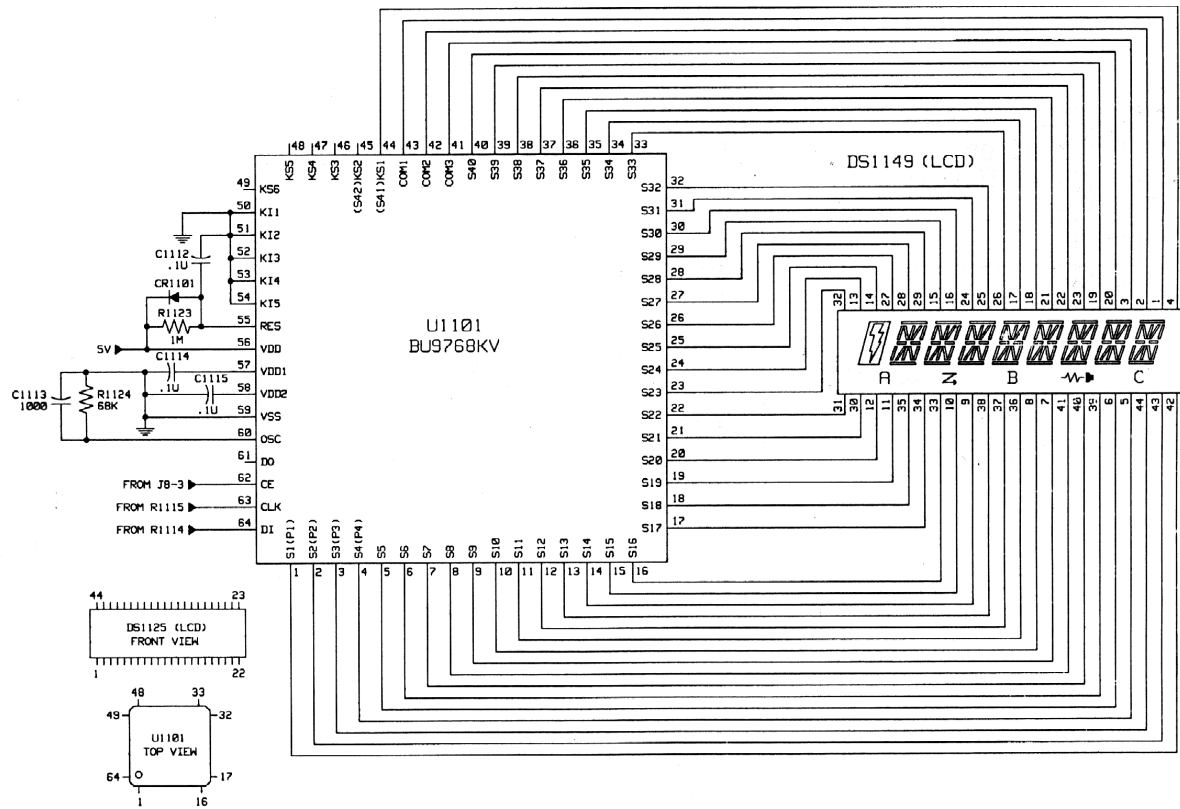


### Display Board (4 Channel)

## Exhibit 5A-1

Applicant: Motorola, Inc.

Equipment Type: ABZ99FT4046



Display Board (24 Channel)

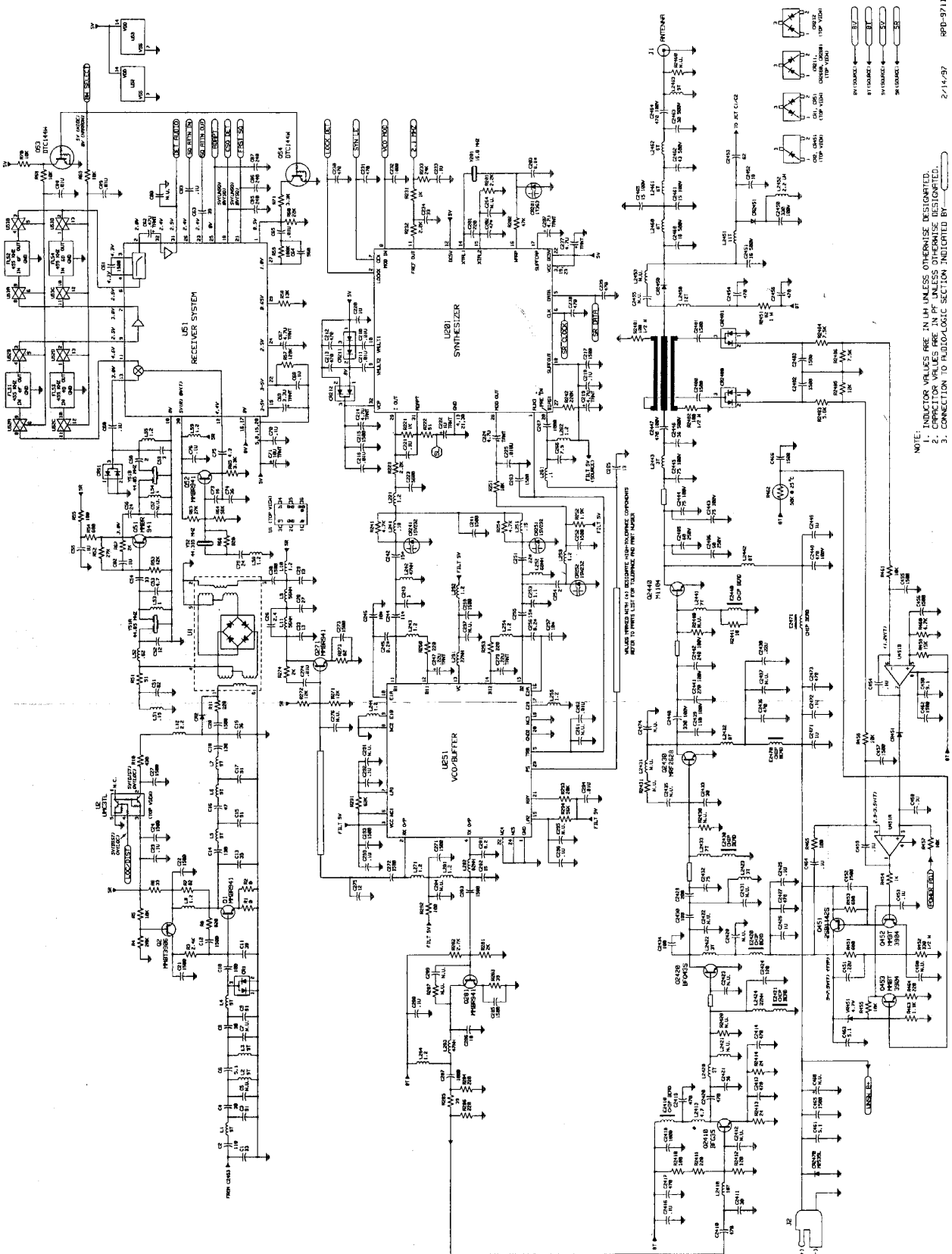
Exhibit 5A-2

1/21/97

RPD-97116-

Applicant: Motorola, Inc.

Equipment Type: ABZ99FT4046

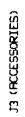


MAIN BOARD (RF Section)

Exhibit 5B-1

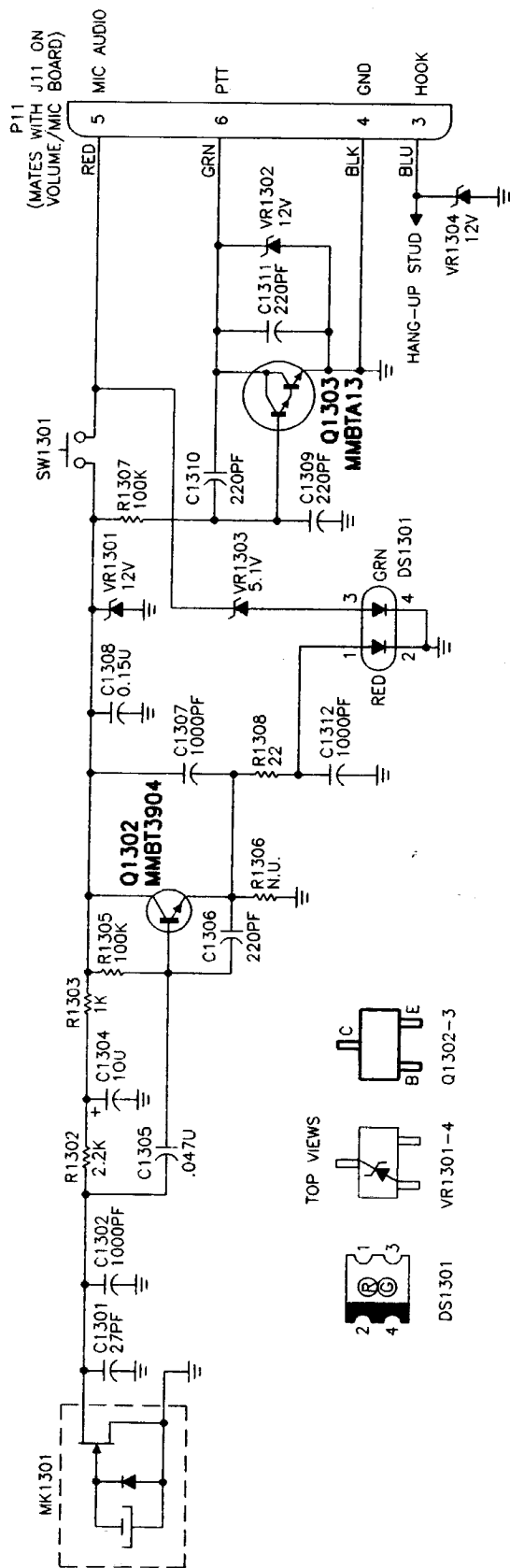
14  
3V

J9  
INT SPKR  
22 046  
3 WRTTS  
7.8 V RMS

**Exhibit 5B-2**

Applicant: Motorola, Inc.

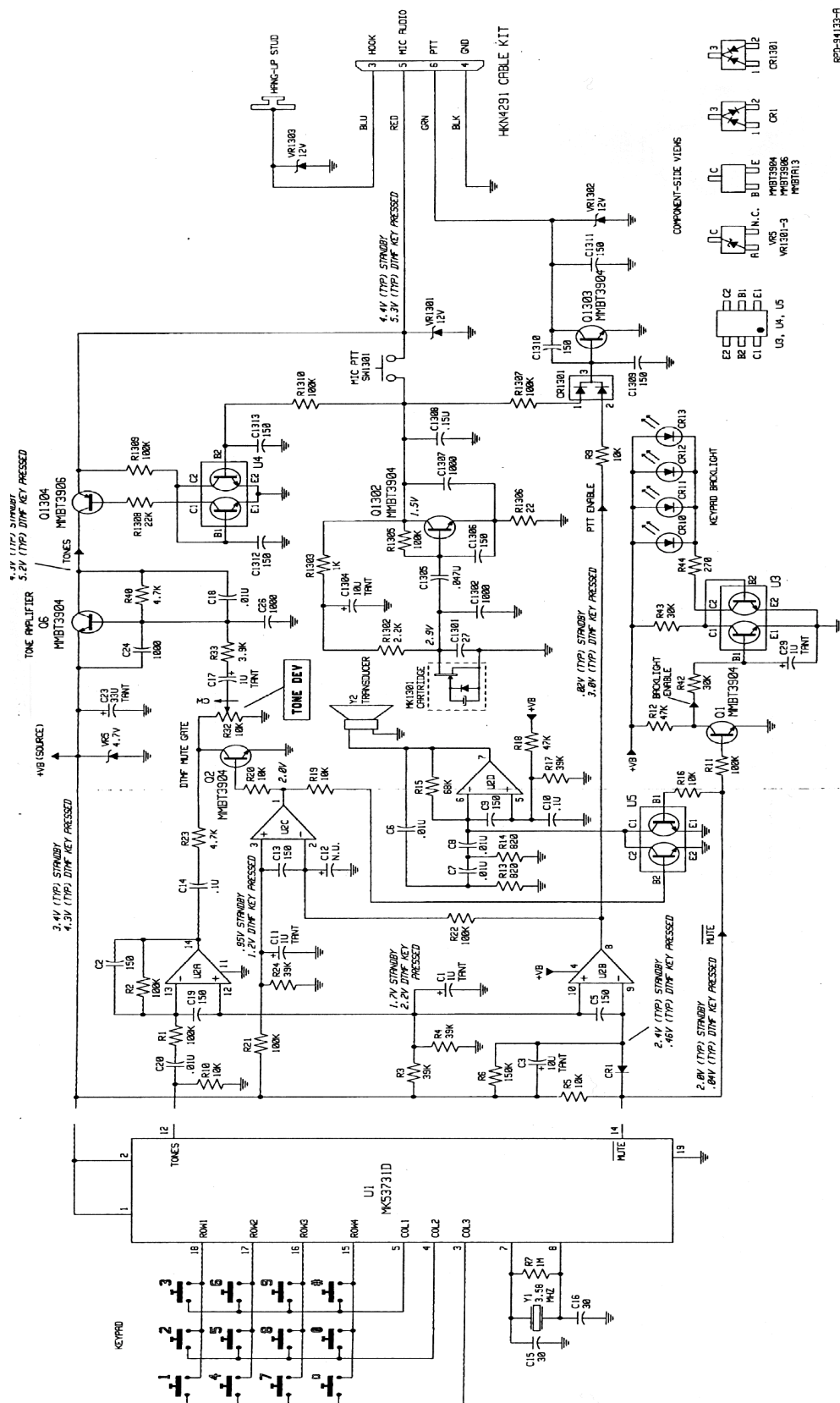
Equipment Type: ABZ99FT4046



Conventional Hand Mic

EXHIBIT 5C

**Equipment Type:** ABZ99FT4046

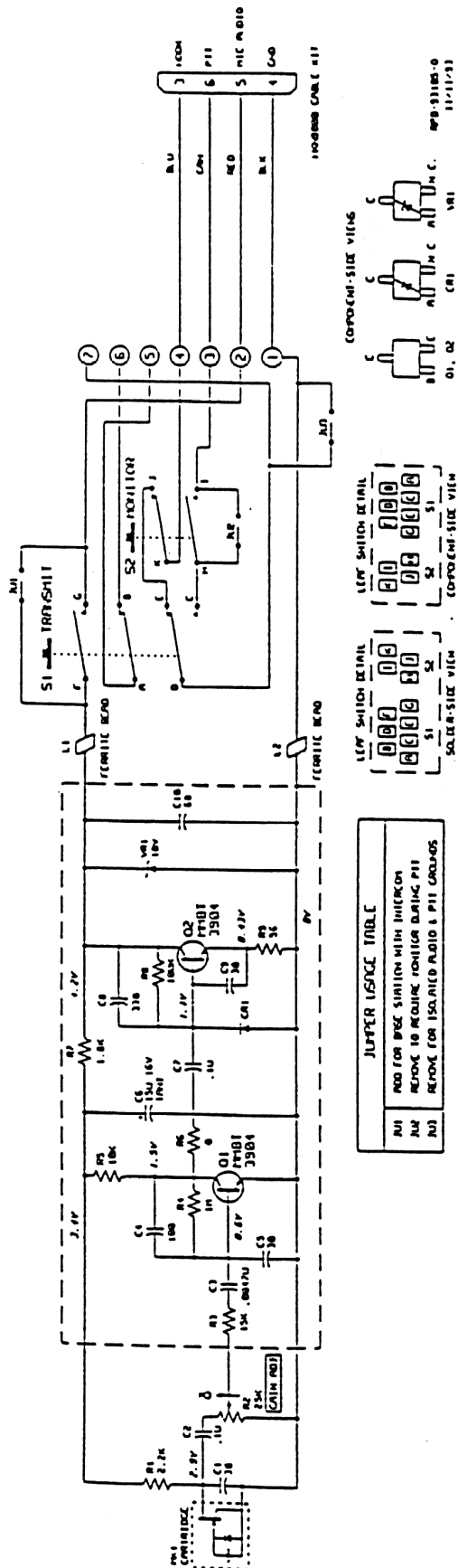


200-94133-A  
9/25/95

## Exhibit 5D

**Applicant:** Motorola, Inc.

**Equipment Type:** ABZ99FT4046



## Desk Mic

Exhibit 5E



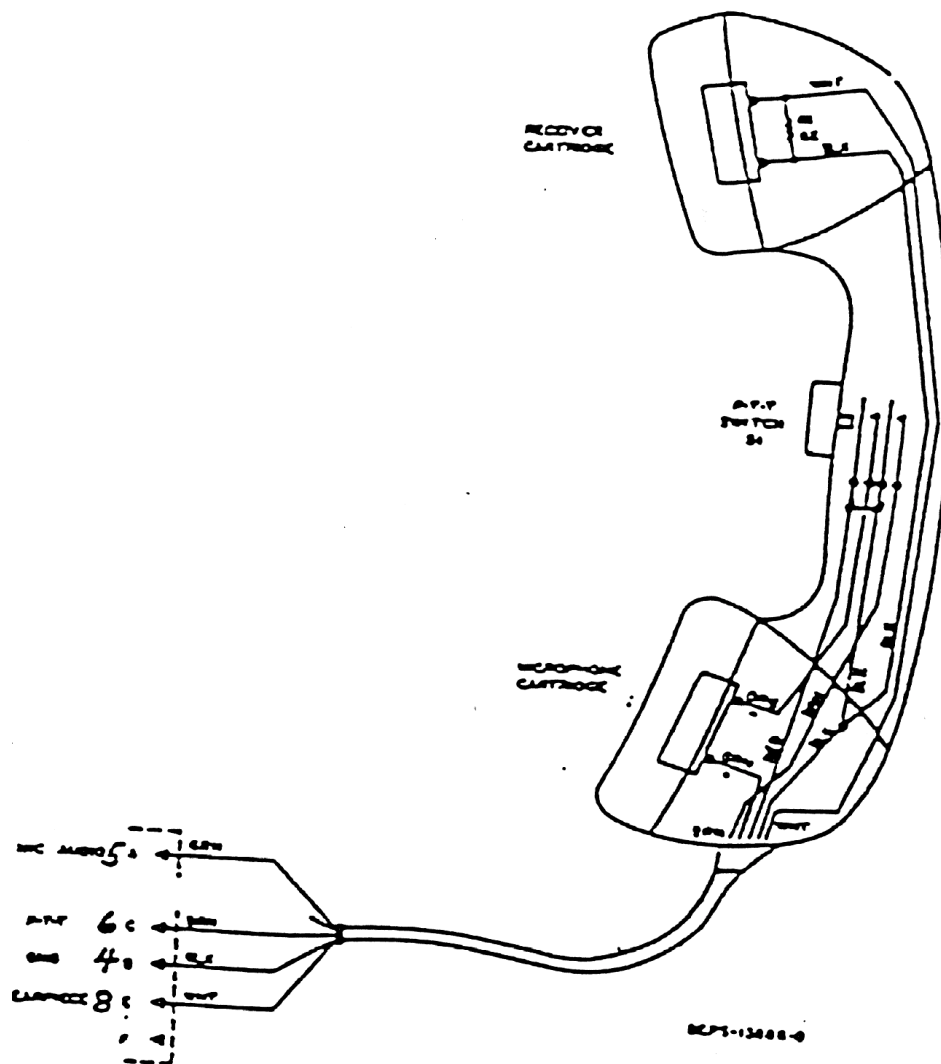
**Equipment Type:** ABZ99FT4046



Exhibit 5F

Applicant: Motorola, Inc.

Equipment Type: ABZ99FT4046



Handset

Exhibit 5G