

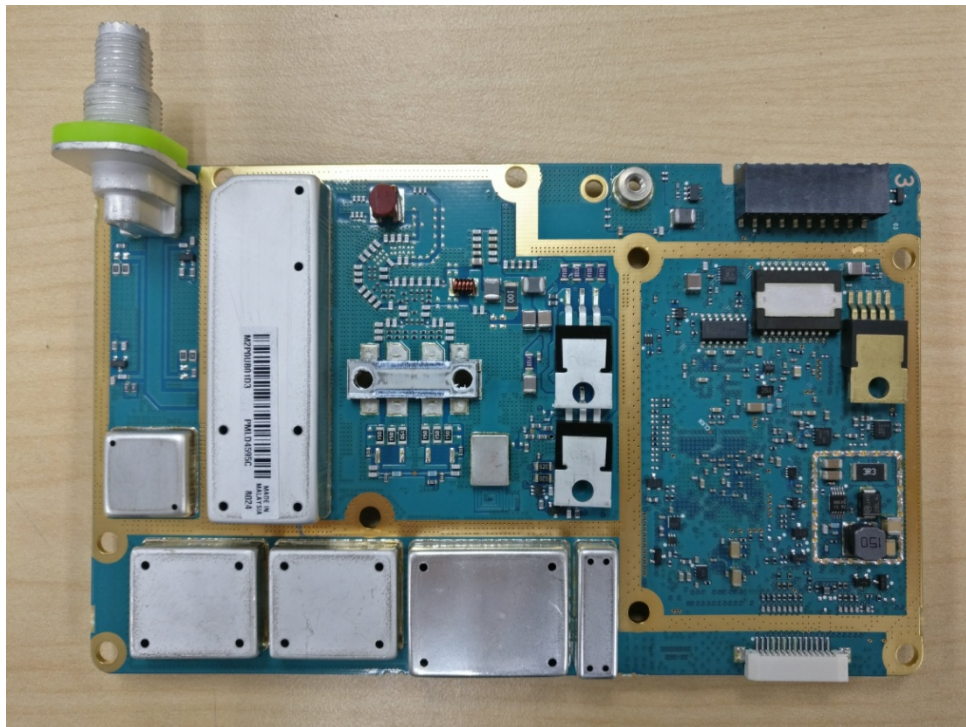
EXHIBIT 9**INTERNAL PHOTOGRAPHS**

(Pursuant to FCC Part 2.1033(b)(7), 2.1033(c)(14) and RSP 100 Sec 4)

The following photographs are attached.

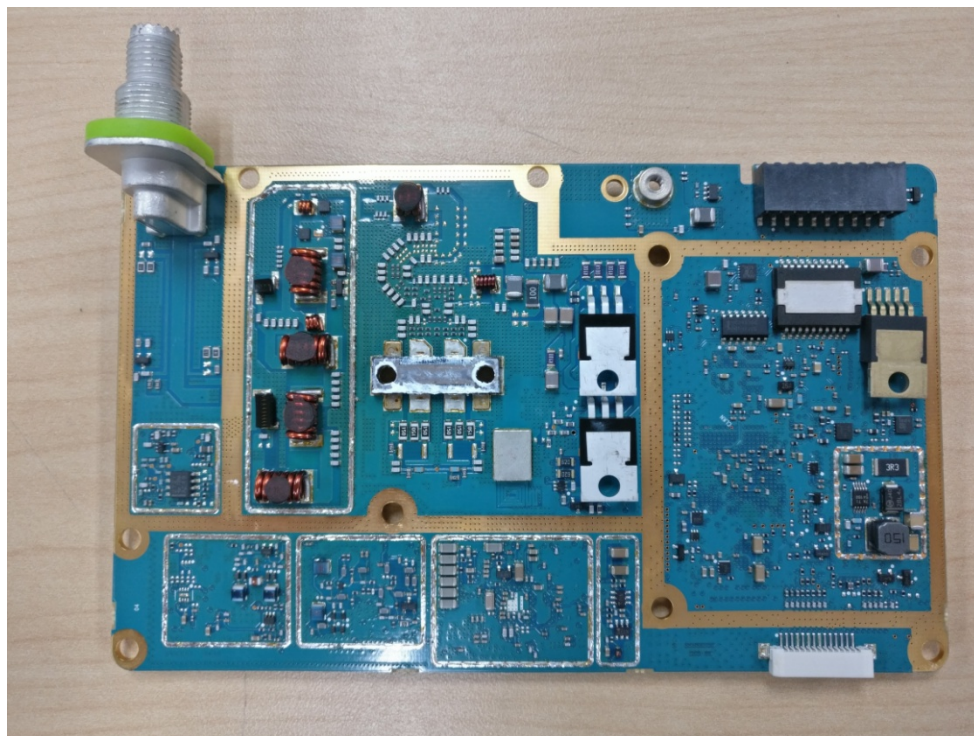
	<u>Exhibit</u>
1. RF board <u>with</u> Shields (Top)	9A
2. RF board <u>without</u> Shields (Top)	9B
3. RF board <u>with</u> Shields (Bottom)	9C
4. RF board <u>without</u> Shields (Bottom)	9D
5. RF boards <u>with</u> chassis and control head (Top), Model 1	9E
6. Chassis and control head (Bottom), Model 1	9F
7. RF boards <u>with</u> chassis and control head (Top), Model 2	9G
8. Chassis and control head (Bottom), Model 2	9H
9. RF boards <u>with</u> chassis and control head (Top), Model 3	9I
10. Chassis and control head (Bottom), Model 3	9J
11. GOB board (Top)	9K
12. GOB board <u>with</u> Shield (Bottom)	9L
13. GOB board <u>without</u> Shield (Bottom)	9M
14. Exploded view of radio	9N
15. Exploded view of alphanumeric display control head	9O
16. Exploded view of numeric display control head	9P

Exhibits 9A



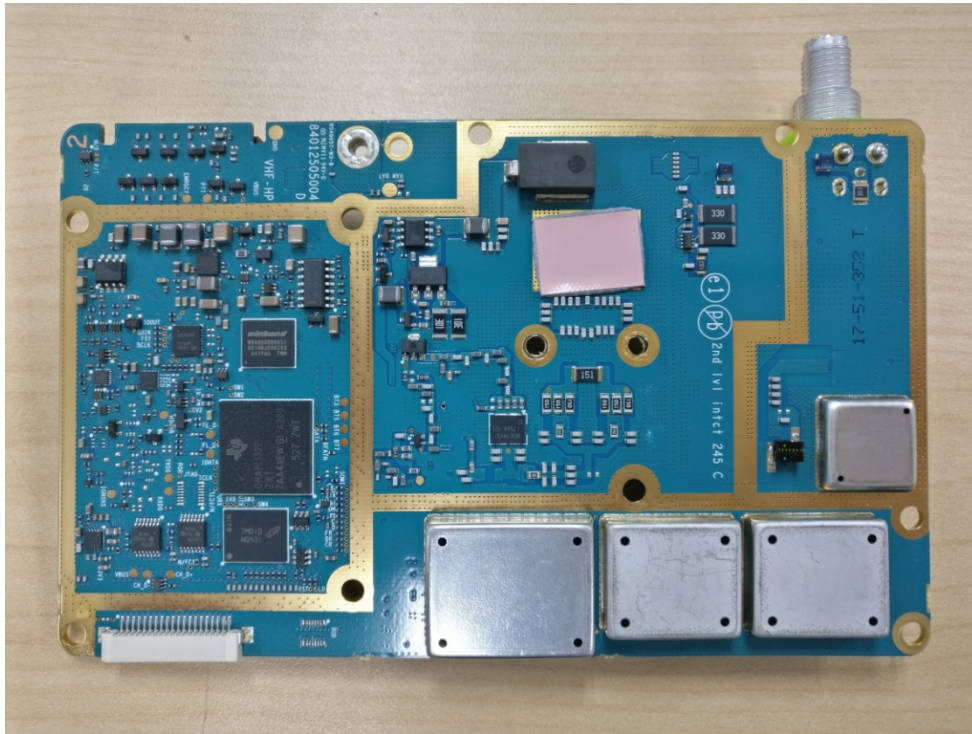
RF board with Shields (Top)

Exhibit 9B



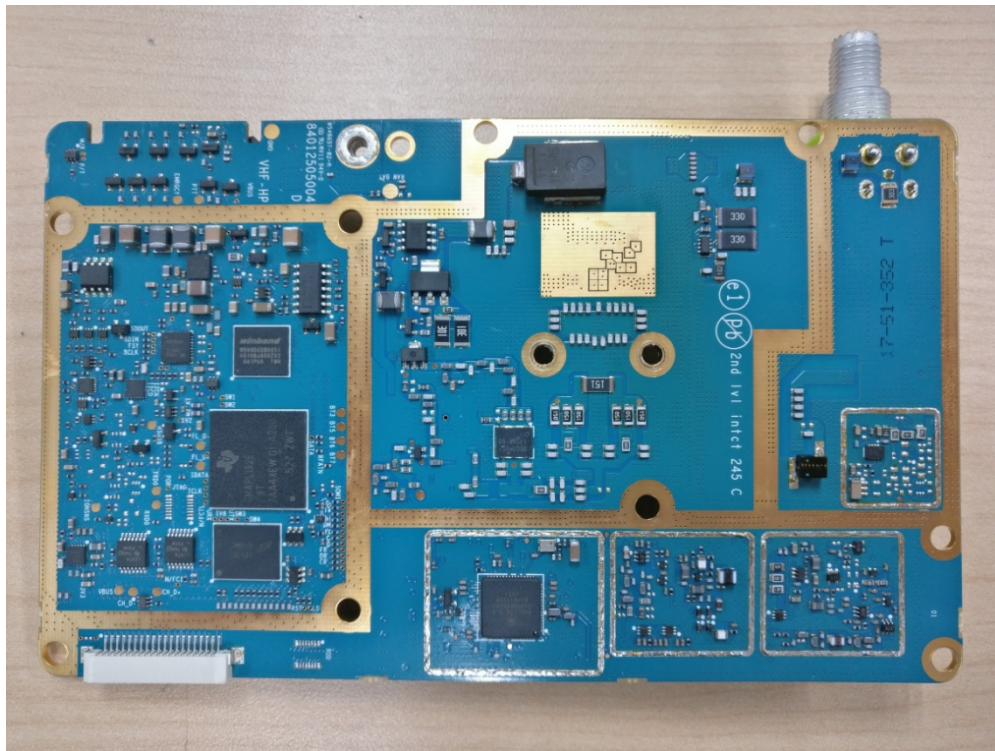
RF board without Shields (Top)

Exhibit 9C



RF board with Shields (Bottom)

Exhibit 9D



RF board without Shields (Bottom)

Exhibit 9E



RF boards with chassis and control head (Top)
(XPR2500)

Exhibit 9F



Chassis and control head (Bottom)
(XPR2500)

Exhibit 9G



RF boards with chassis and control head (Top)
(CM300d)

Exhibit 9H



Chassis and control head (Bottom)
(CM300d)

Exhibit 9I



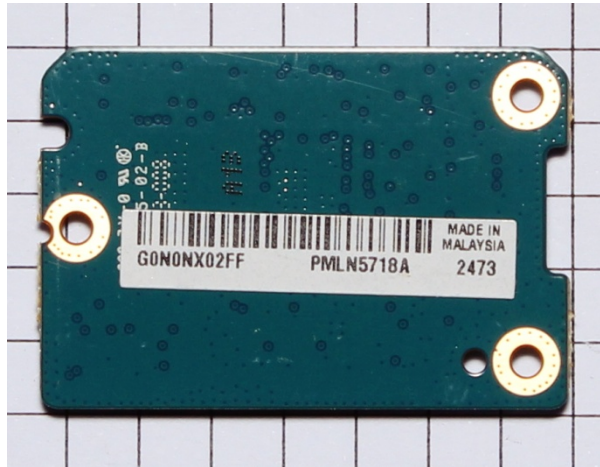
RF boards with chassis and control head (Top)
(CM200d)

Exhibit 9J



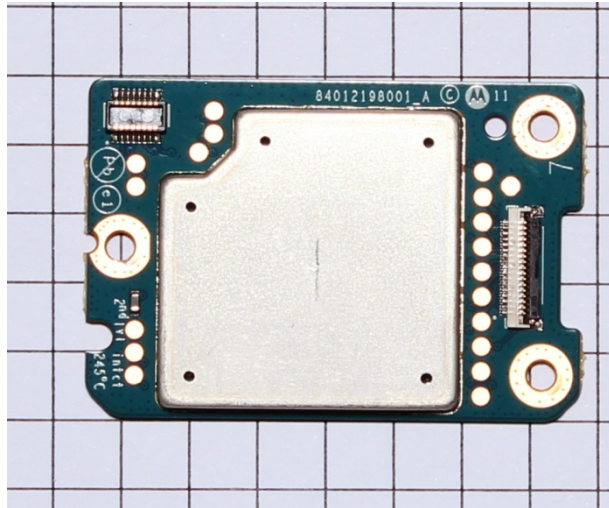
Chassis and control head (Bottom)
(CM200d)

Exhibit 9K



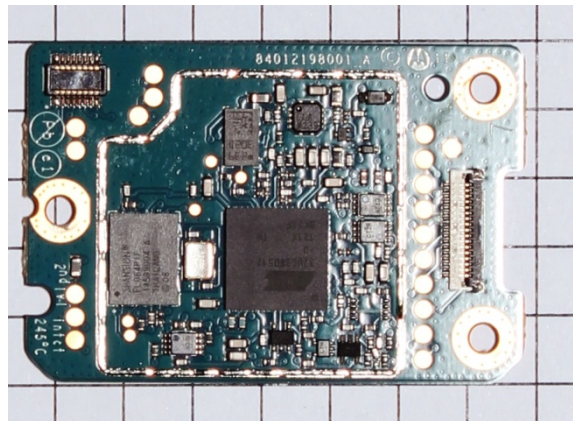
GOB board (Top)

Exhibit 9L



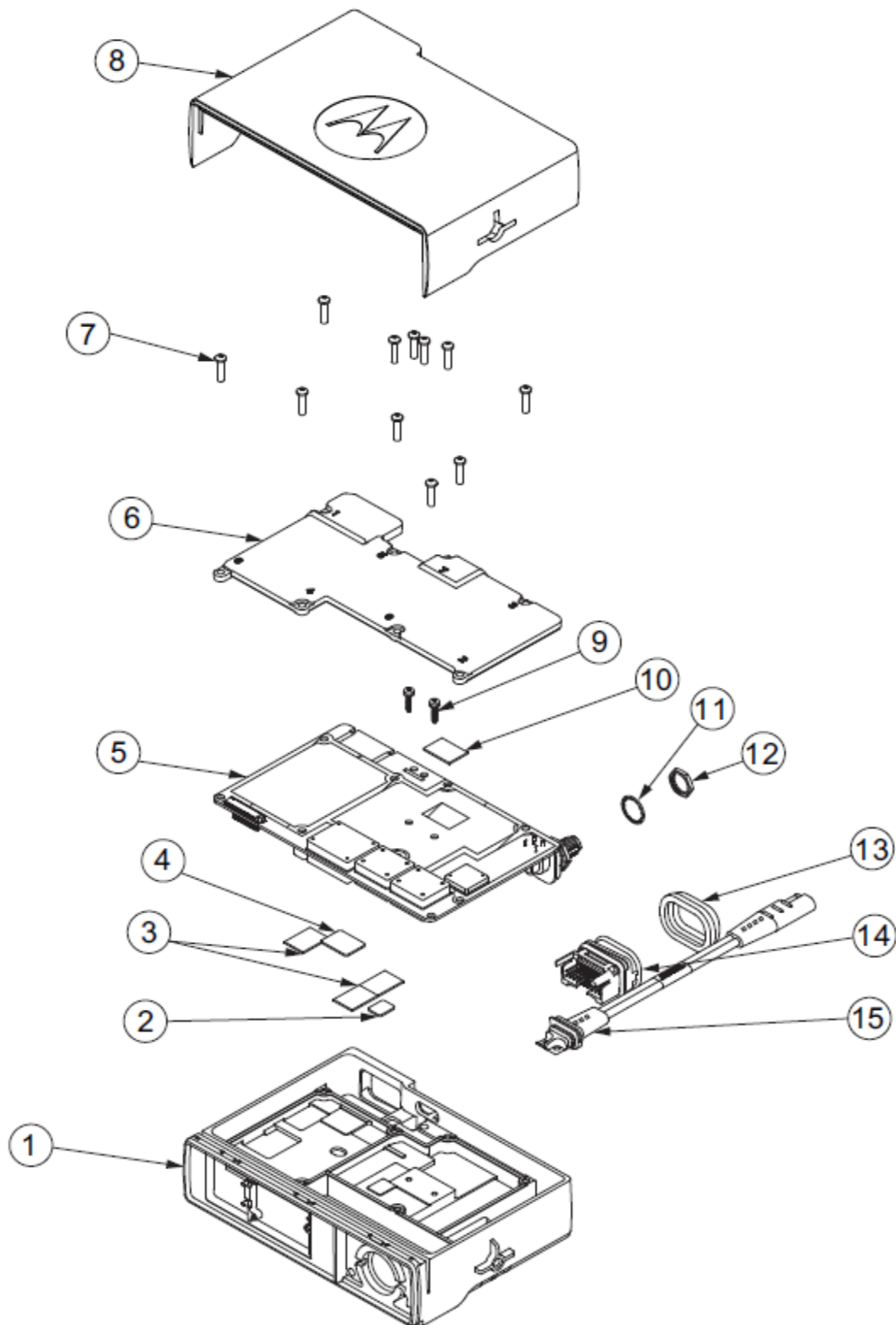
GOB board with Shield (Bottom)

Exhibit 9M



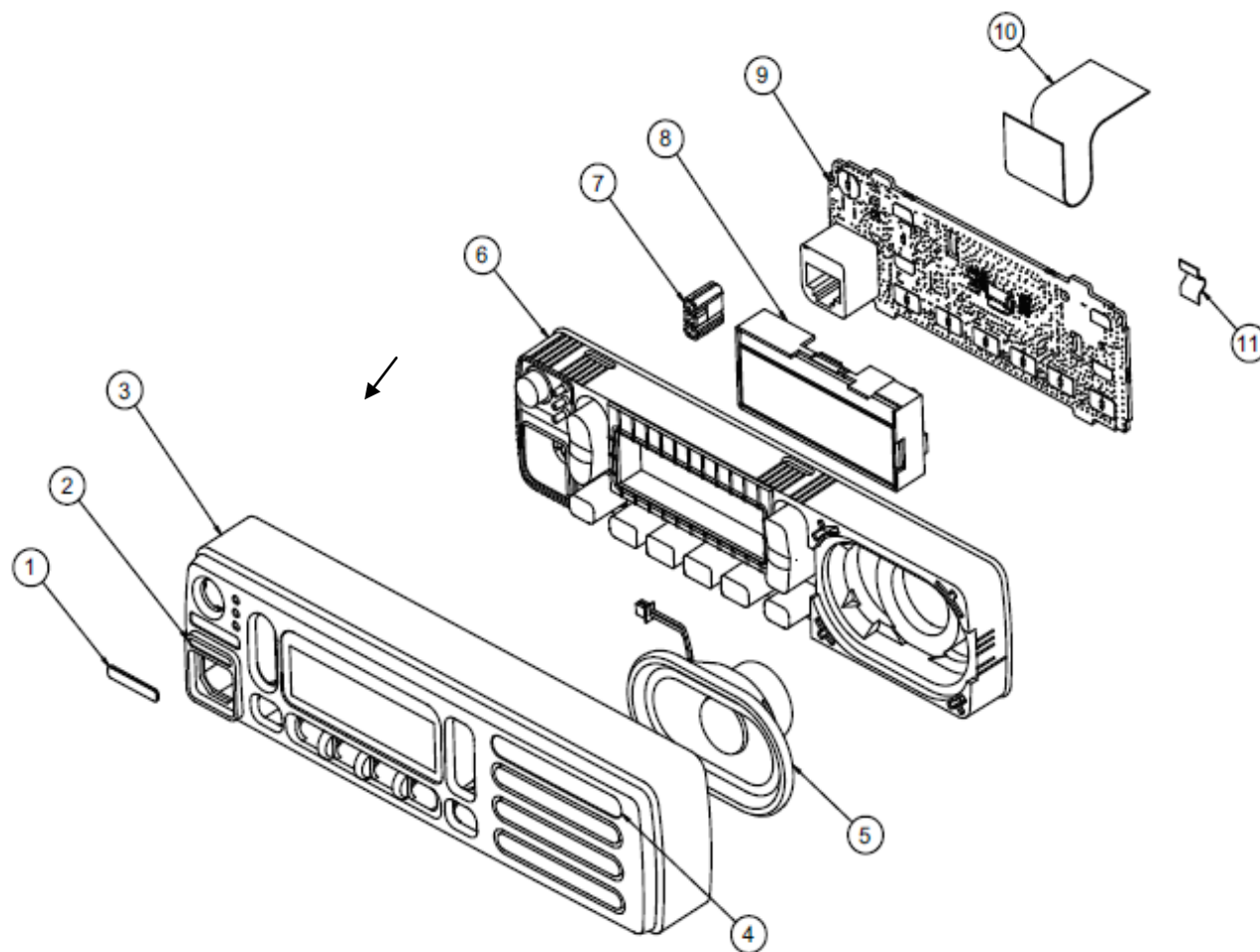
GOB board without Shield (Bottom)

Exhibit 9N



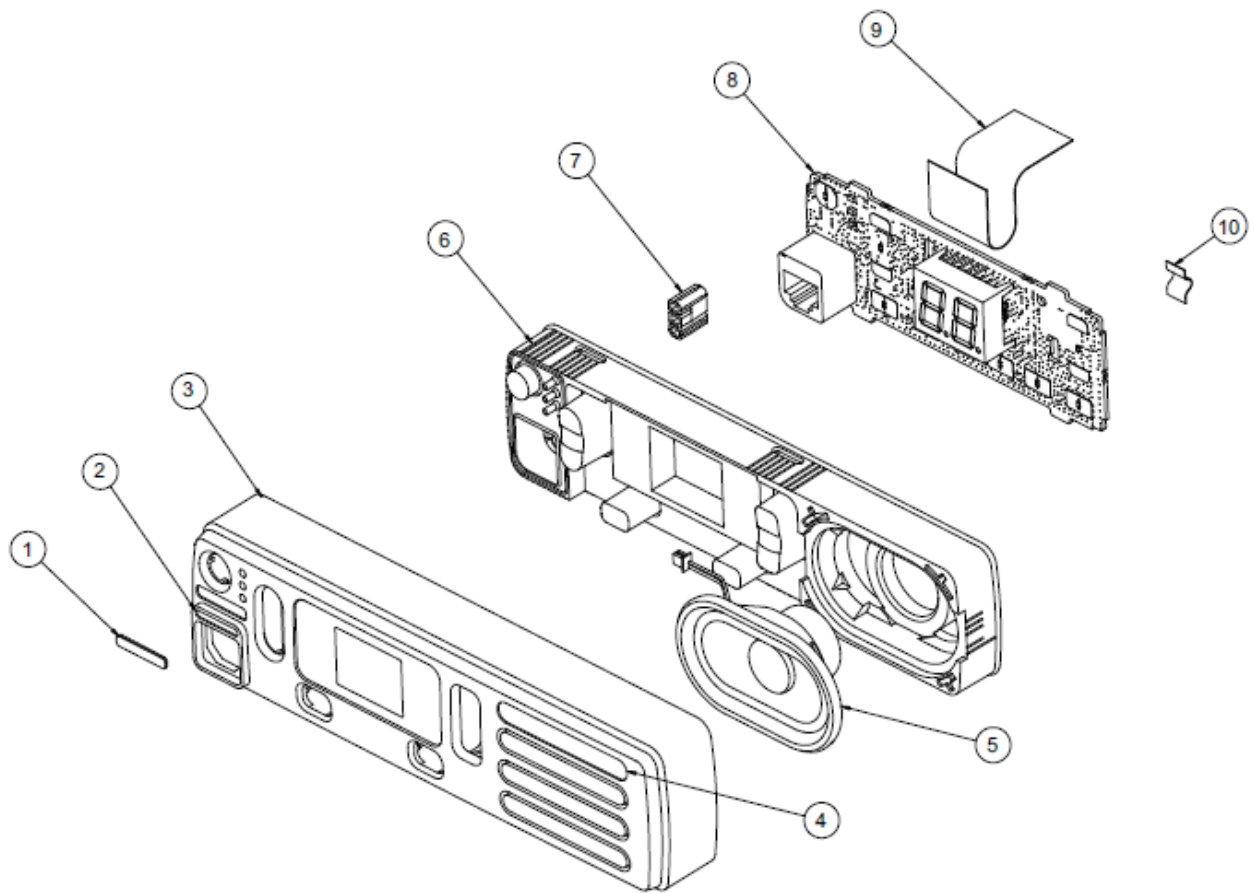
Exploded View of Radio

Exhibit 90



Exploded view of alphanumeric display control head

Exhibit 9P



Exploded view of numeric display control head