

Internal Photographs

The following photographs are attached.

Exhibit

- | | | |
|----|---|----|
| 1. | MOTOTRBO VHF complete internal open up view | 9A |
| 2. | MOTOTRBO VHF Chassis and RF board | 9B |
| 3. | MOTOTRBO VHF RF board <u>with</u> Shields (Top) | 9c |
| 4. | MOTOTRBO VHF RF board <u>without</u> Shields (Top) | 9D |
| 5. | MOTOTRBO VHF RF board <u>with</u> Shields (Bottom) | 9E |
| 6. | MOTOTRBO VHF RF board <u>without</u> Shields (Bottom) | 9F |

Exhibits 9A



MOTOTRBO VHF complete internal open up view

Exhibits 9B

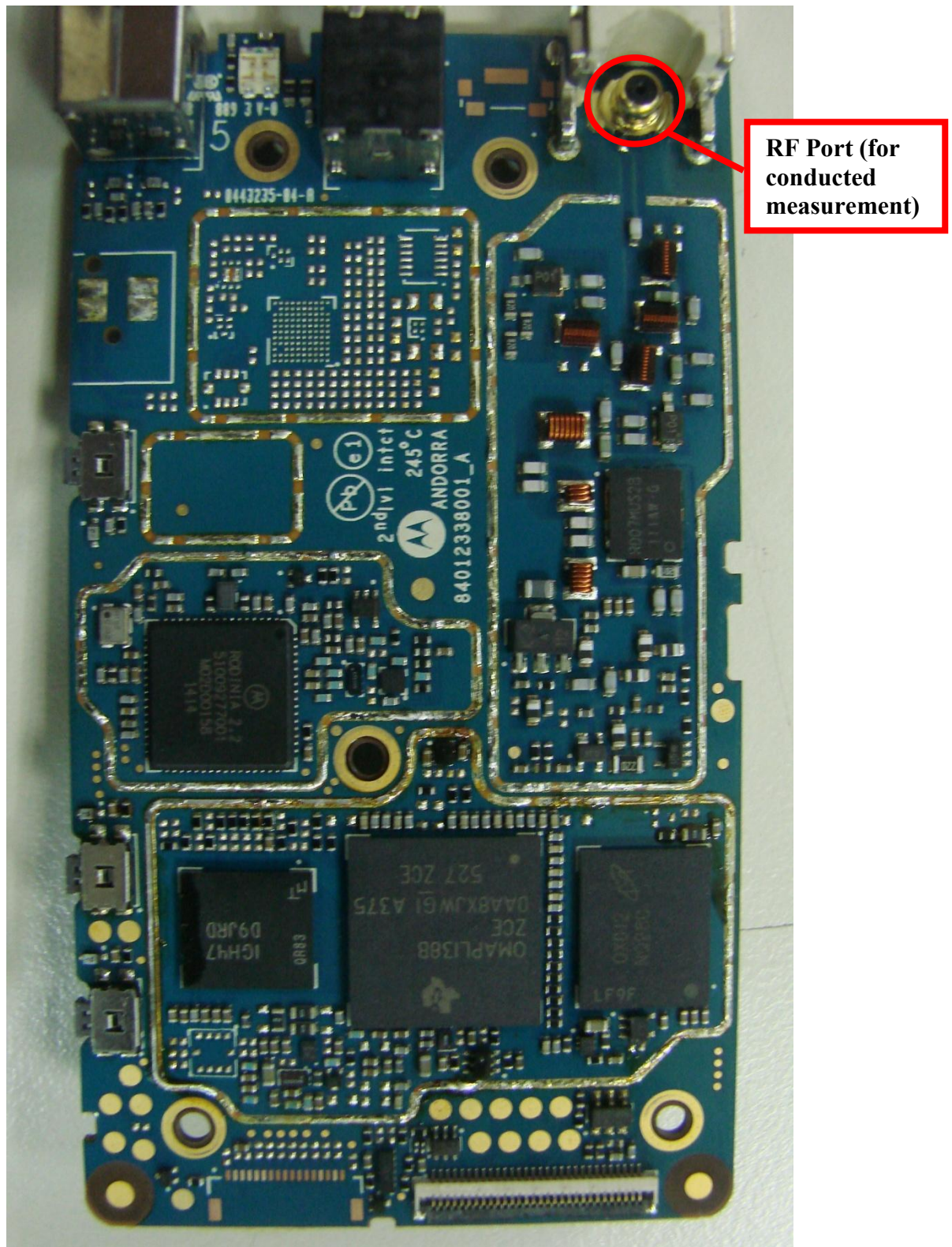


MOTOTRBO VHF Chassis and RF board

Exhibits 9C



MOTOTRBO VHF RF board with Shields (Top)

Exhibits 9D

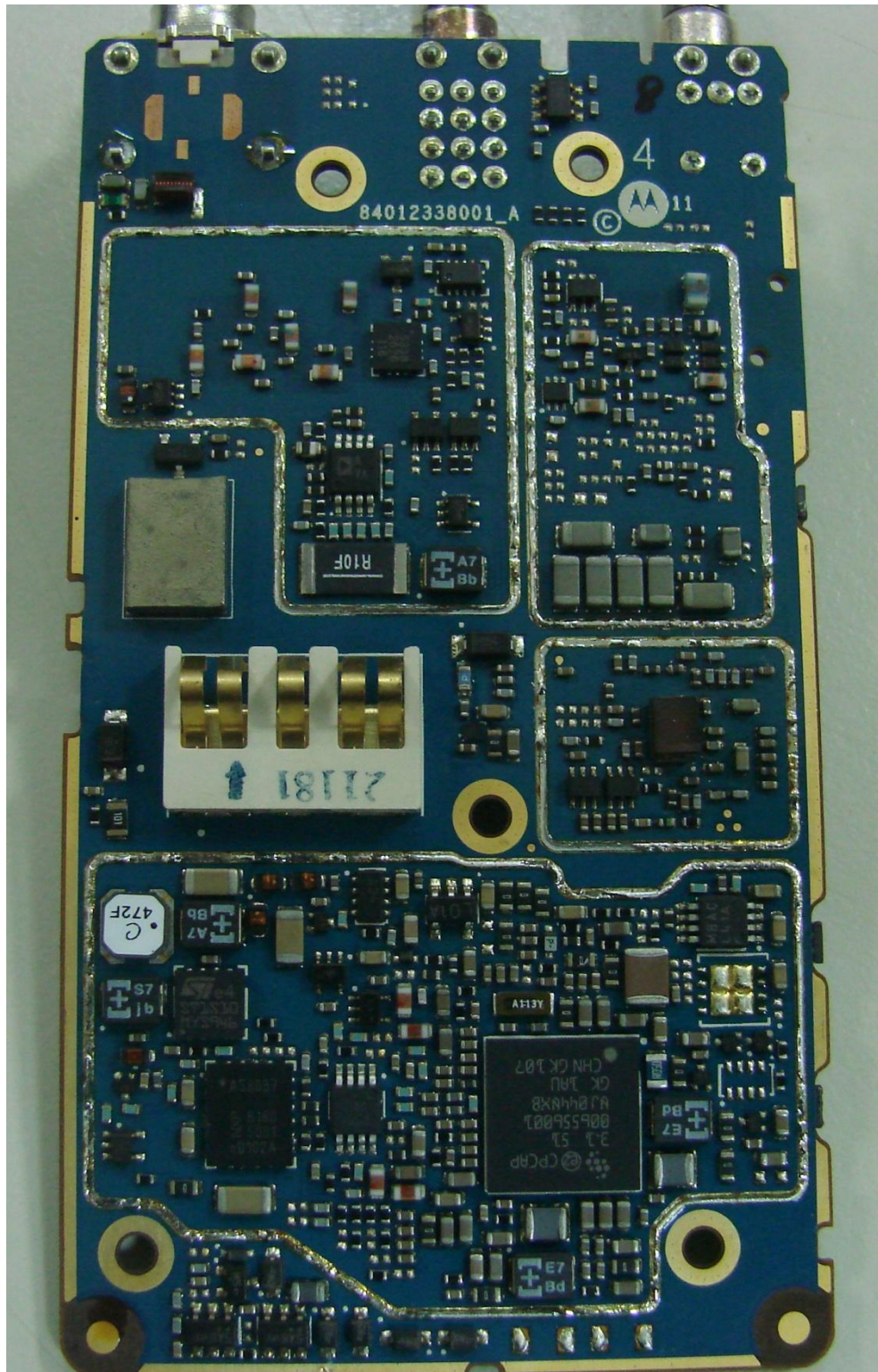
MOTOTRBO VHF RF board without Shields (Top)

Exhibits 9E



MOTOTRBO VHF RF board with Shields (Bottom)

Exhibits 9F



MOTOTRBO VHF RF board without Shields (Bottom)