

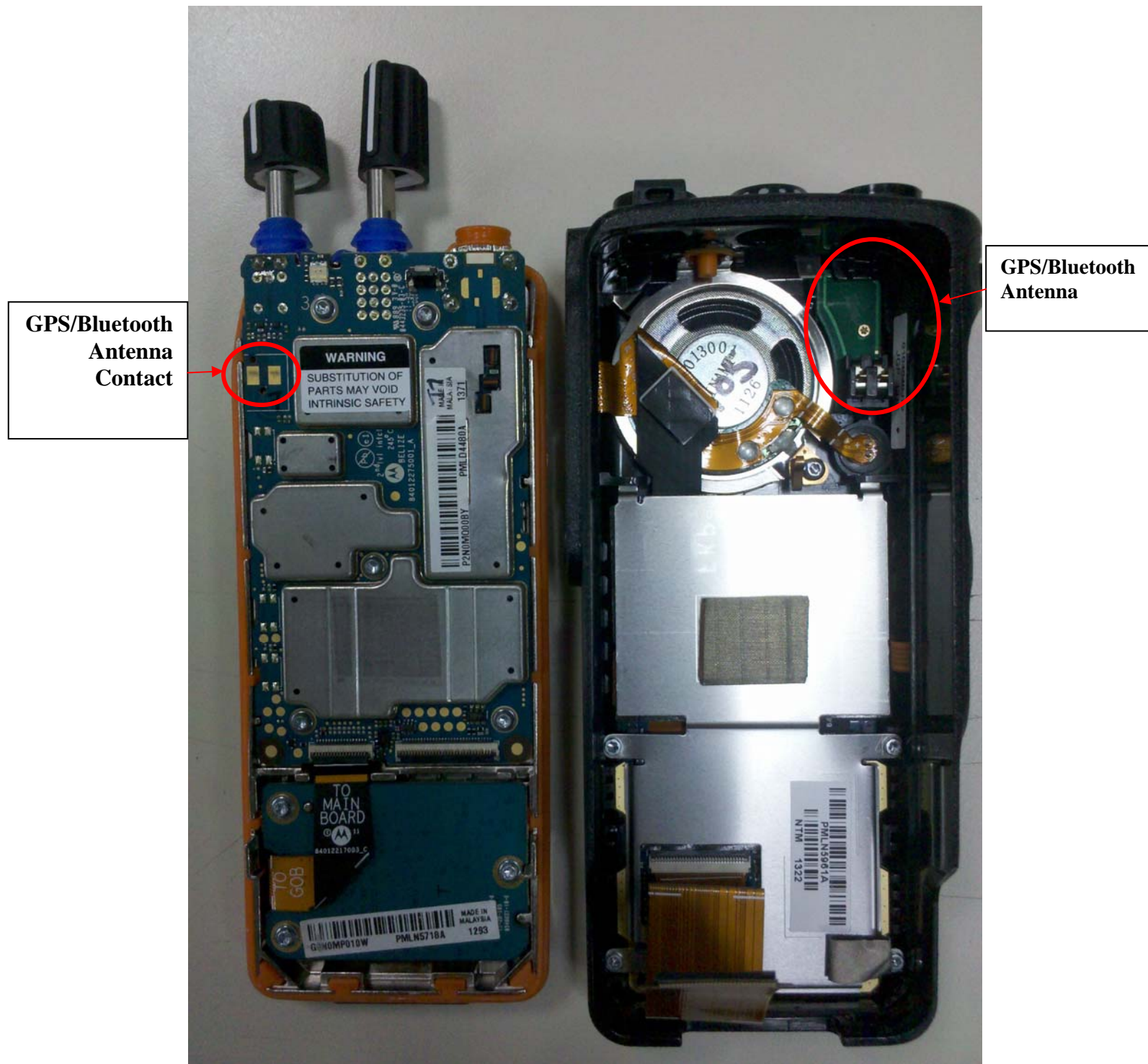
Internal Photographs

The following photographs are attached.

Exhibit

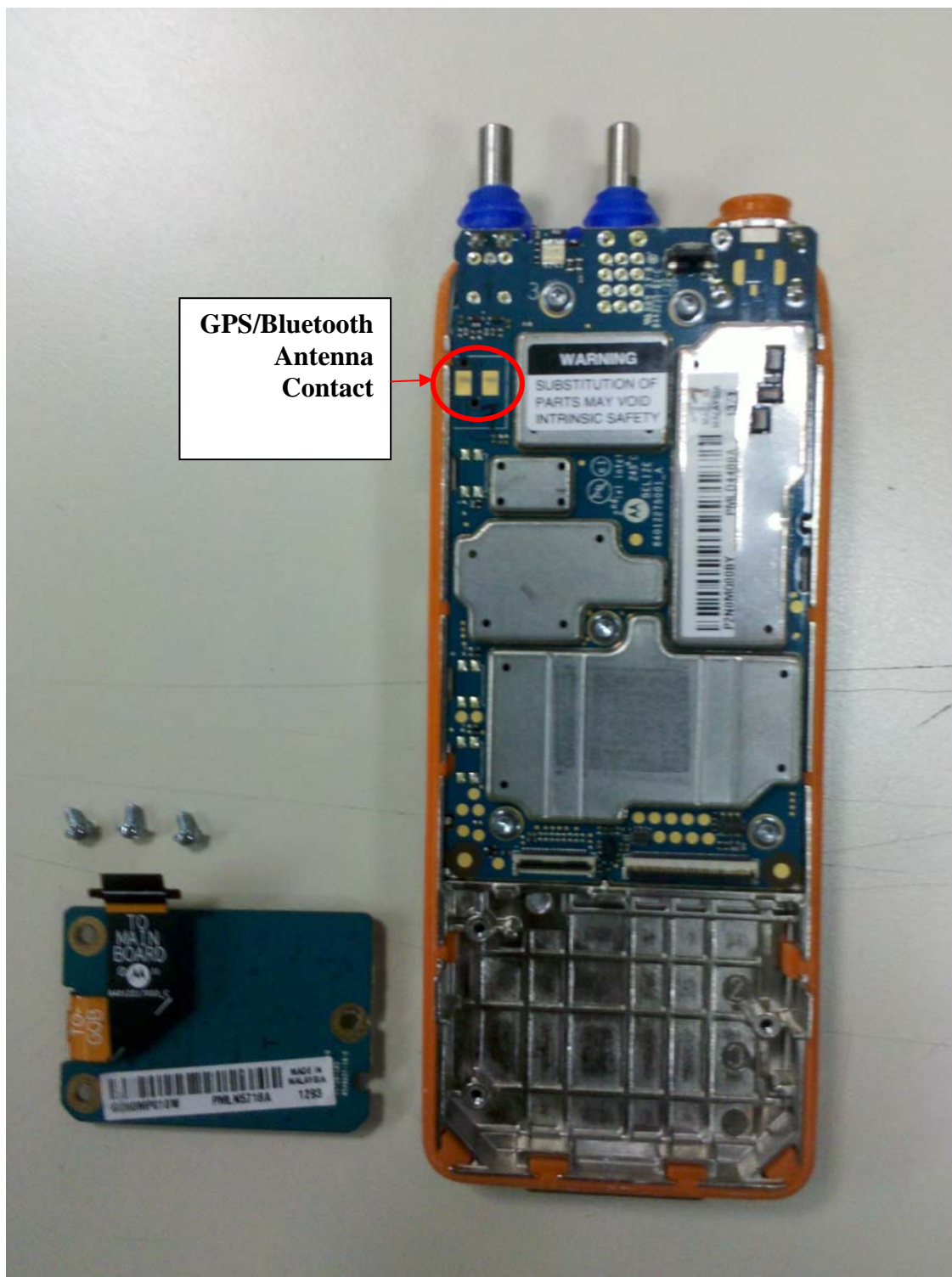
- | | | |
|-----|--|----|
| 1. | MOTOTRBO VHF complete internal open up view. | 9A |
| 2. | MOTOTRBO VHF with option board | 9B |
| 3. | MOTOTRBO VHF Chassis and RF Board | 9C |
| 4. | MOTOTRBO VHF RF board <u>with</u> Shields (Top). | 9D |
| 5. | MOTOTRBO VHF RF board <u>without</u> Shields (Top). | 9E |
| 6. | MOTOTRBO VHF RF board <u>with</u> Shields (Bottom). | 9F |
| 7. | MOTOTRBO VHF RF board <u>without</u> Shields (Bottom). | 9G |
| 8. | MOTOTRBO VHF GOB board <u>with</u> Shields (Top). | 9H |
| 9. | MOTOTRBO VHF GOB board <u>without</u> Shields (Top). | 9I |
| 10. | MOTOTRBO VHF GOB board (Bottom). | 9J |

Exhibit 9A



MOTOTRBO VHF complete internal open up view.

Exhibit 9B



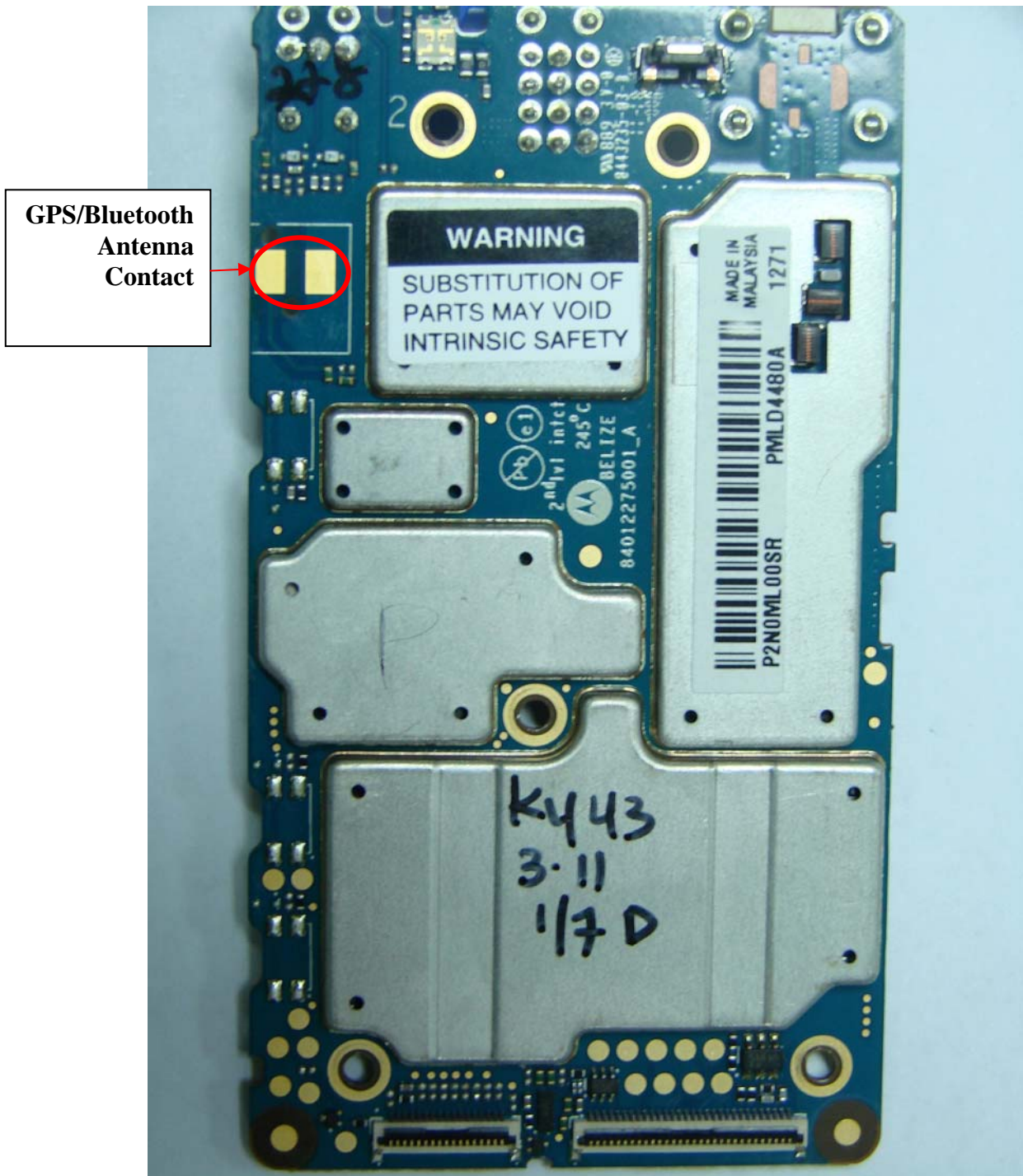
MOTOTRBO VHF with option board

Exhibit 9C



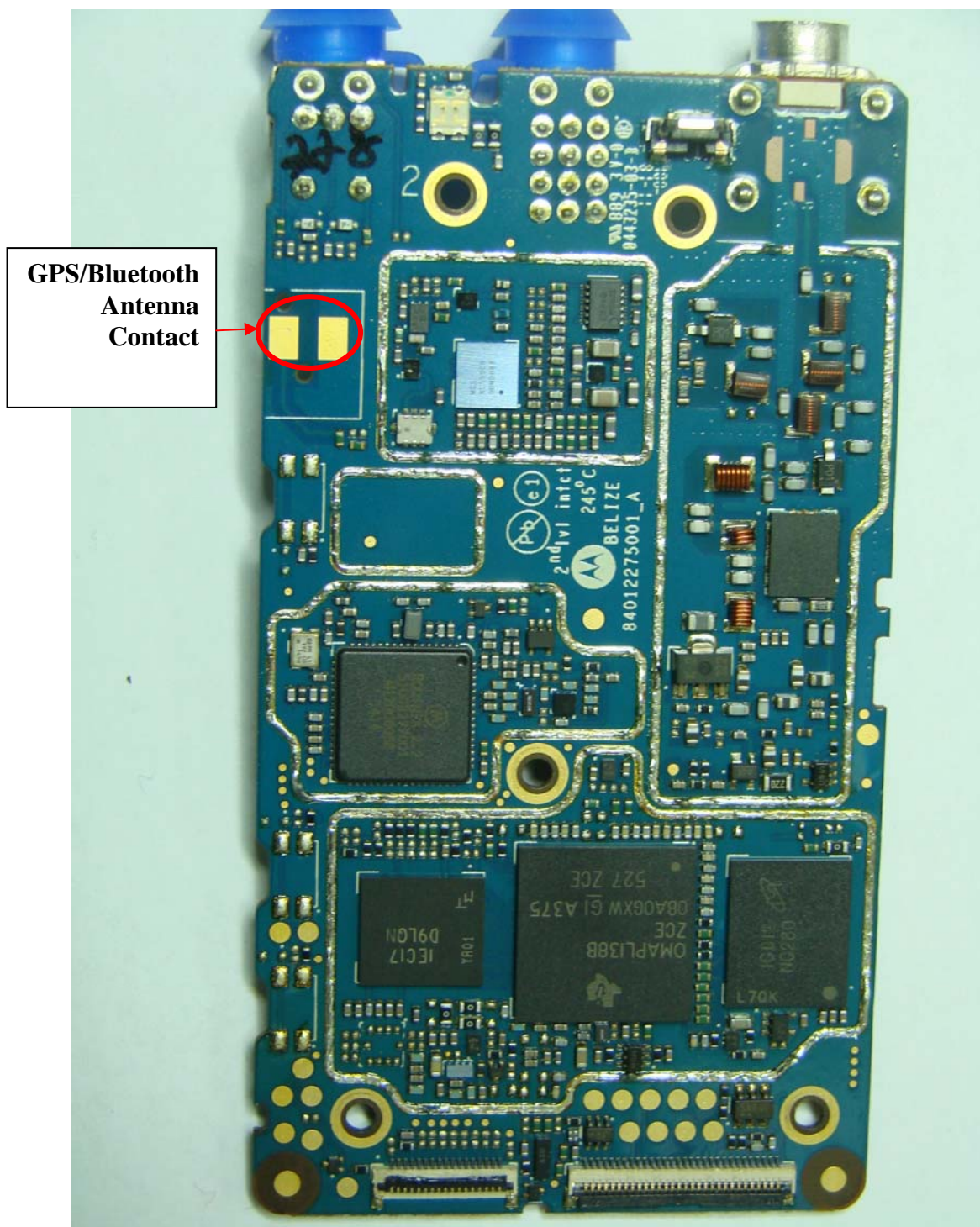
MOTOTRBO VHF Chassis and RF Board

Exhibit 9D



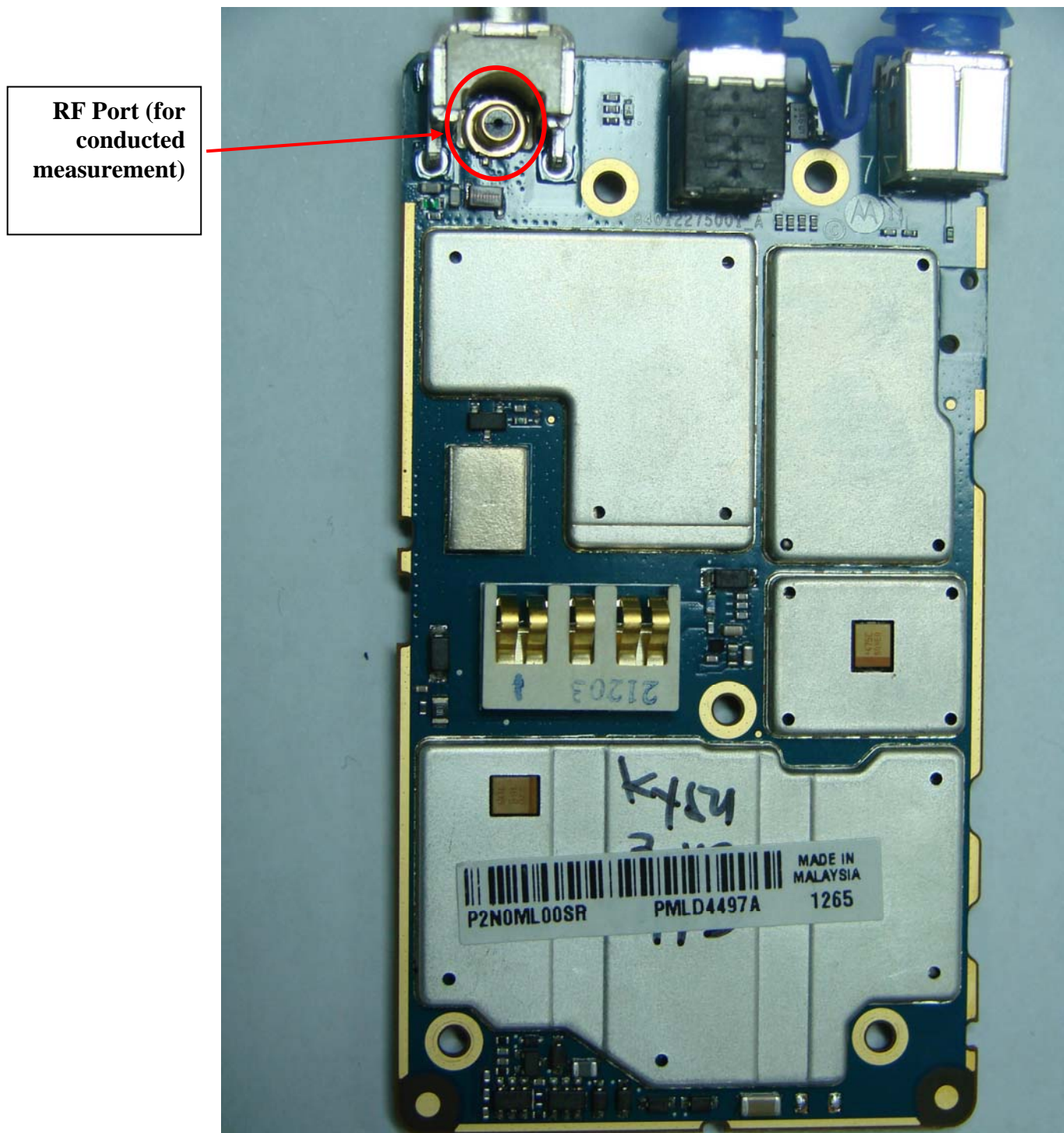
MOTOTRBO VHF RF board with Shields (Top)

Exhibit 9E



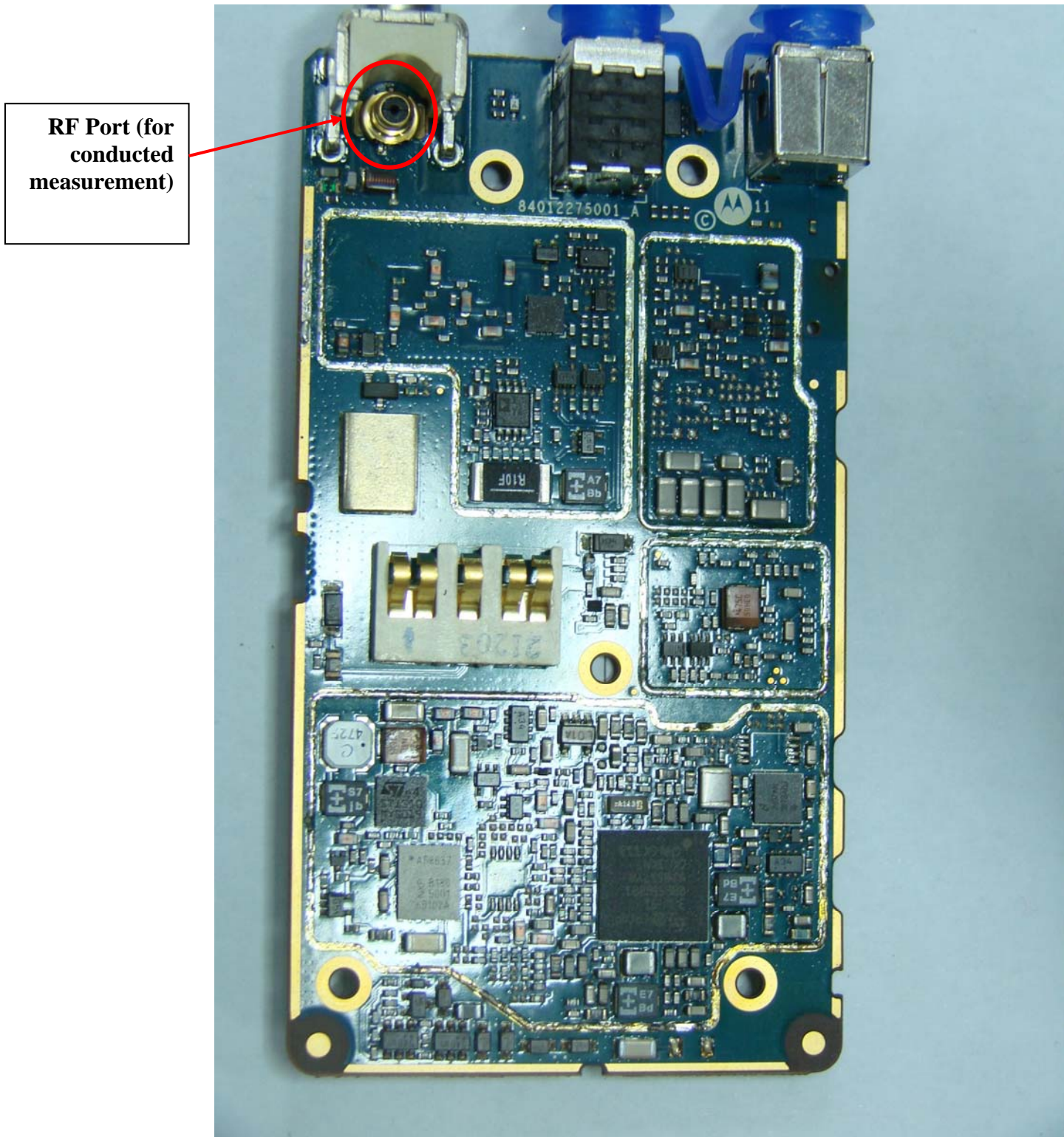
MOTOTRBO VHF RF board without Shields (Top)

Exhibit 9F



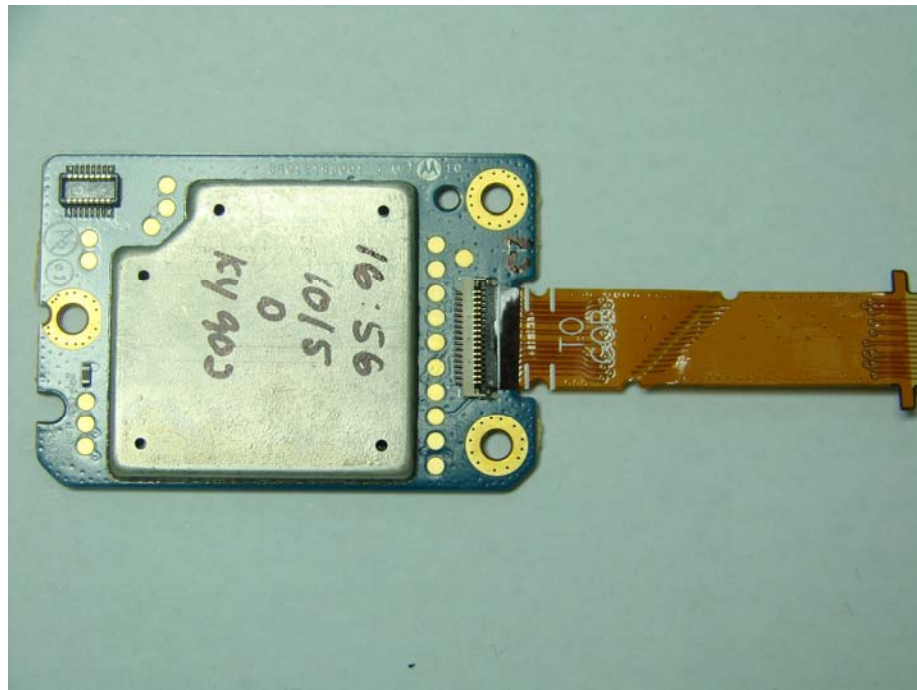
MOTOTRBO VHF RF board with Shields (Bottom)

Exhibit 9G



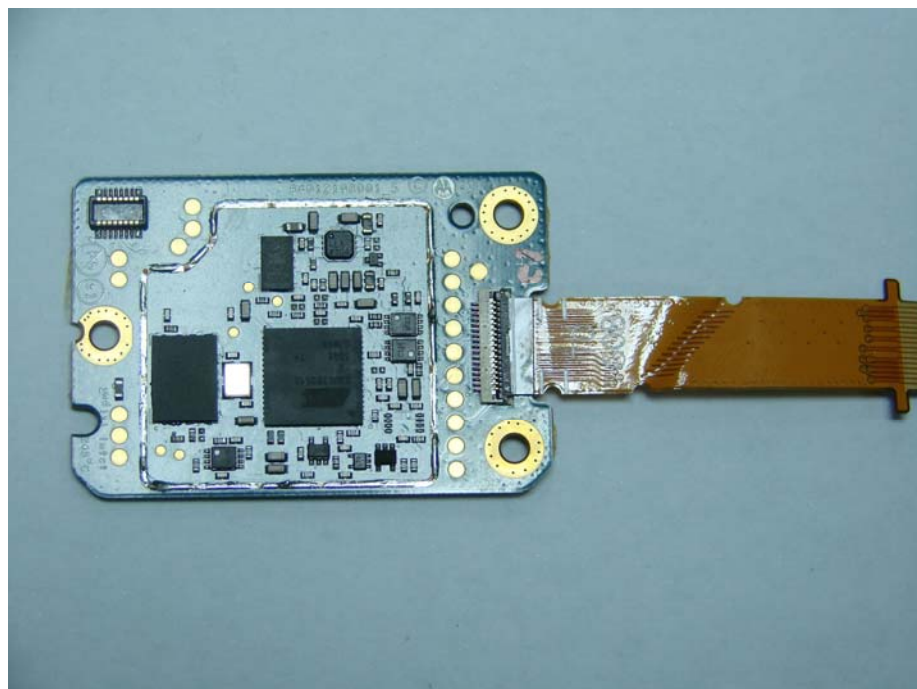
MOTOTRBO VHF RF board without Shields (Bottom)

Exhibit 9H



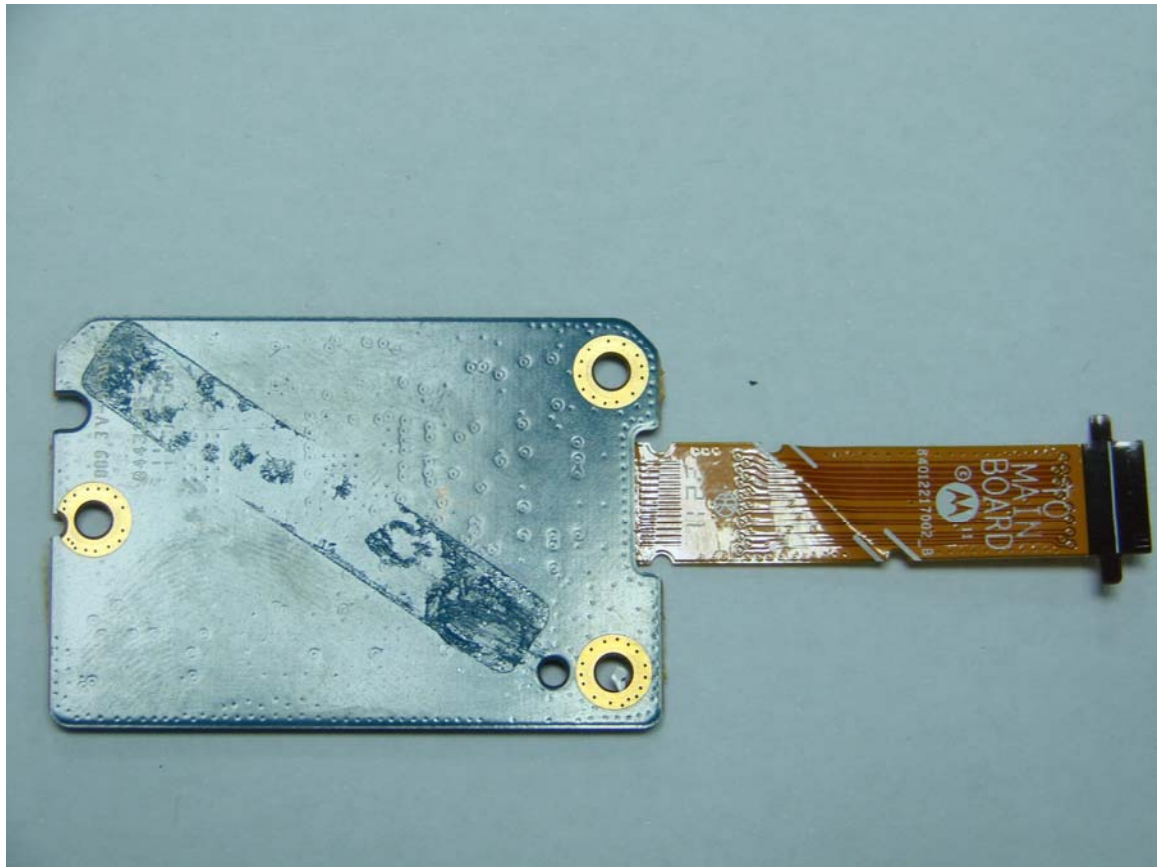
MOTOTRBO VHF GOB board with Shields (Top)

Exhibit 9I



MOTOTRBO VHF GOB board without Shields (TOP)

Exhibit 9J



MOTOTRBO VHF GOB board (Bottom)