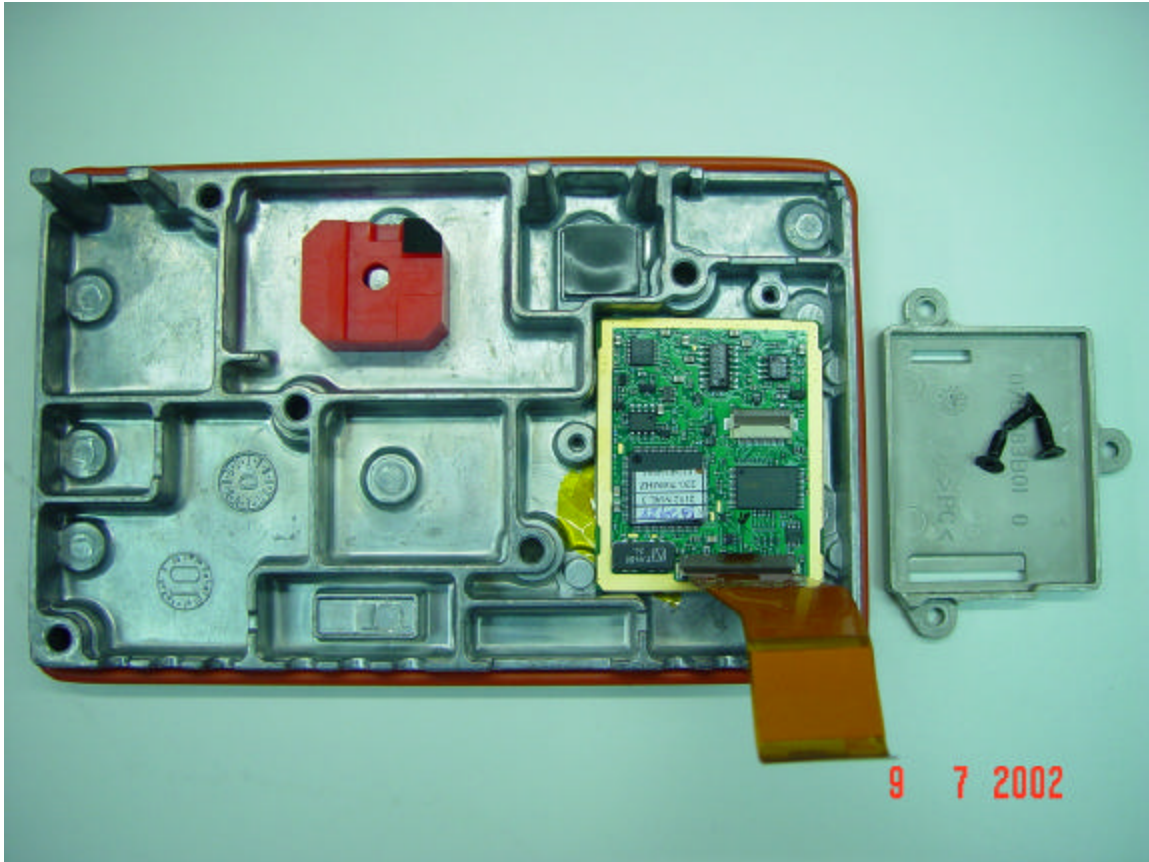


TOP VIEW OF CIRCUIT BOARD WITH SHIELDS REMOVED
(AS SHOWN IN ORIGINAL EXHIBIT 9 SHEET 2 OF 2)



INSIDE VIEW OF TOP COVER WITH SHIELD REMOVED
AND OPTION BOARD VISIBLE
(AS SHOWN IN ORIGINAL EXHIBIT 9 SHEET 1 OF 2)