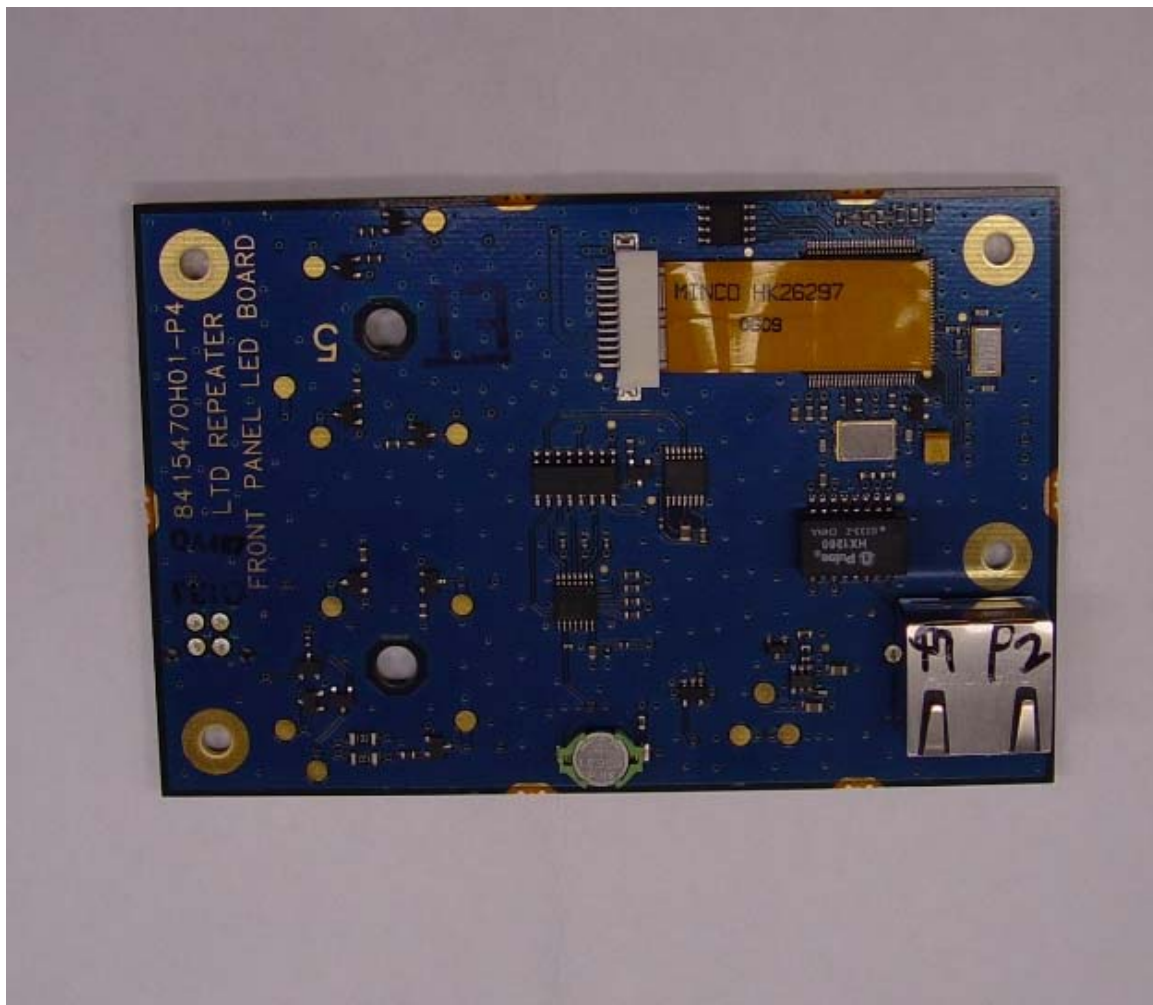




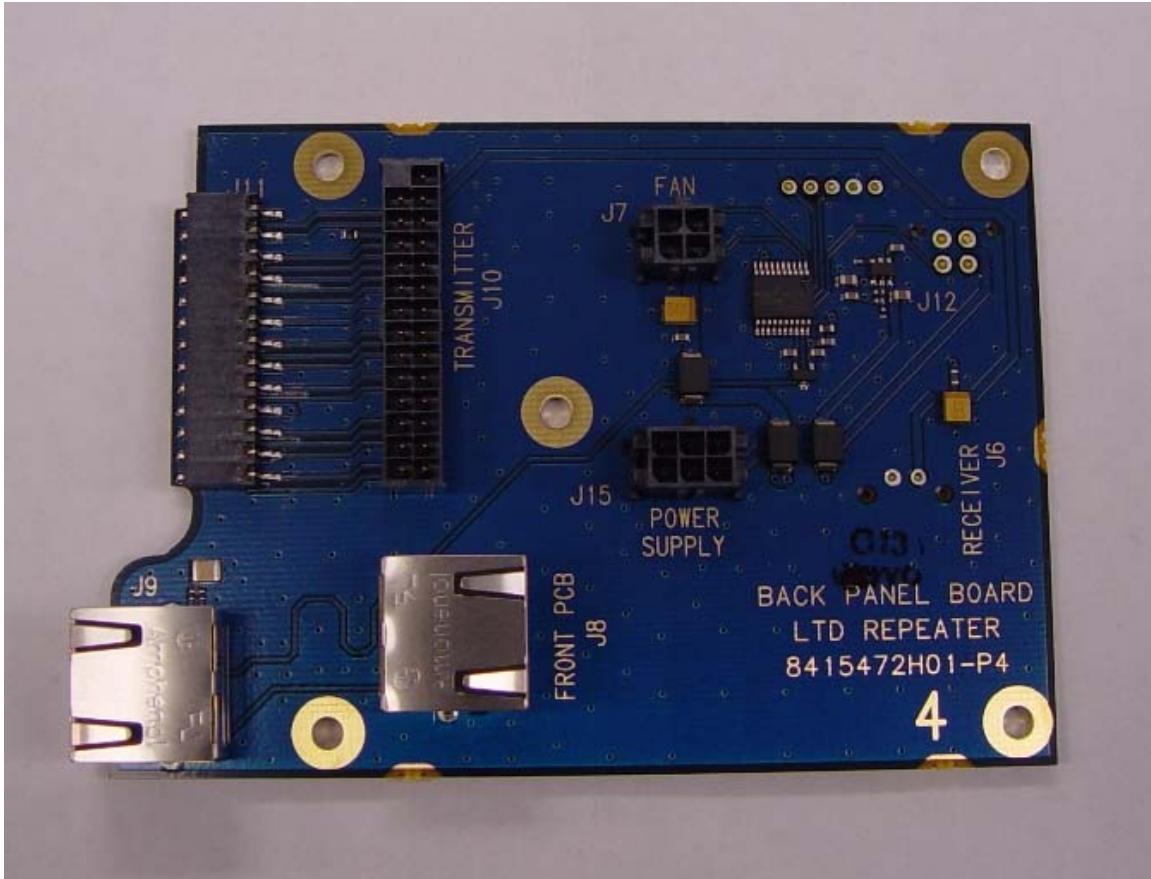
TOP VIEW OF WITH TOP COVER REMOVED



**TOP VIEW WITH RADIO CIRCUIT BOARD REMOVED FROM CHASSIS  
(MATING SURFACES OF CIRCUIT BOARD AND CHASSIS ARE SHOWN)**



TOP VIEW OF FRONT PANEL LED BOARD



TOP VIEW OF BACK PANEL BOARD