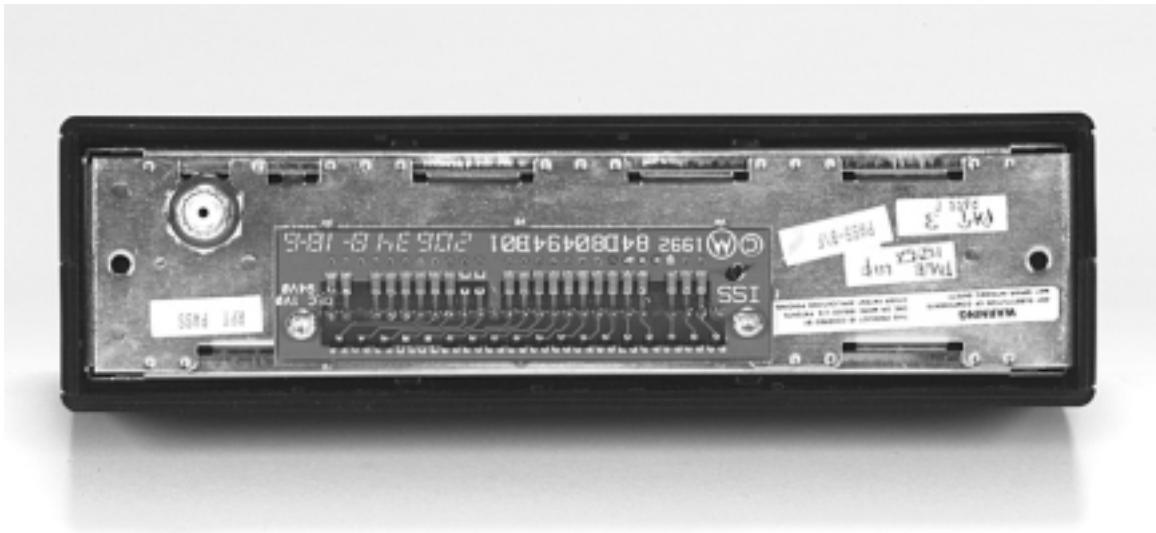


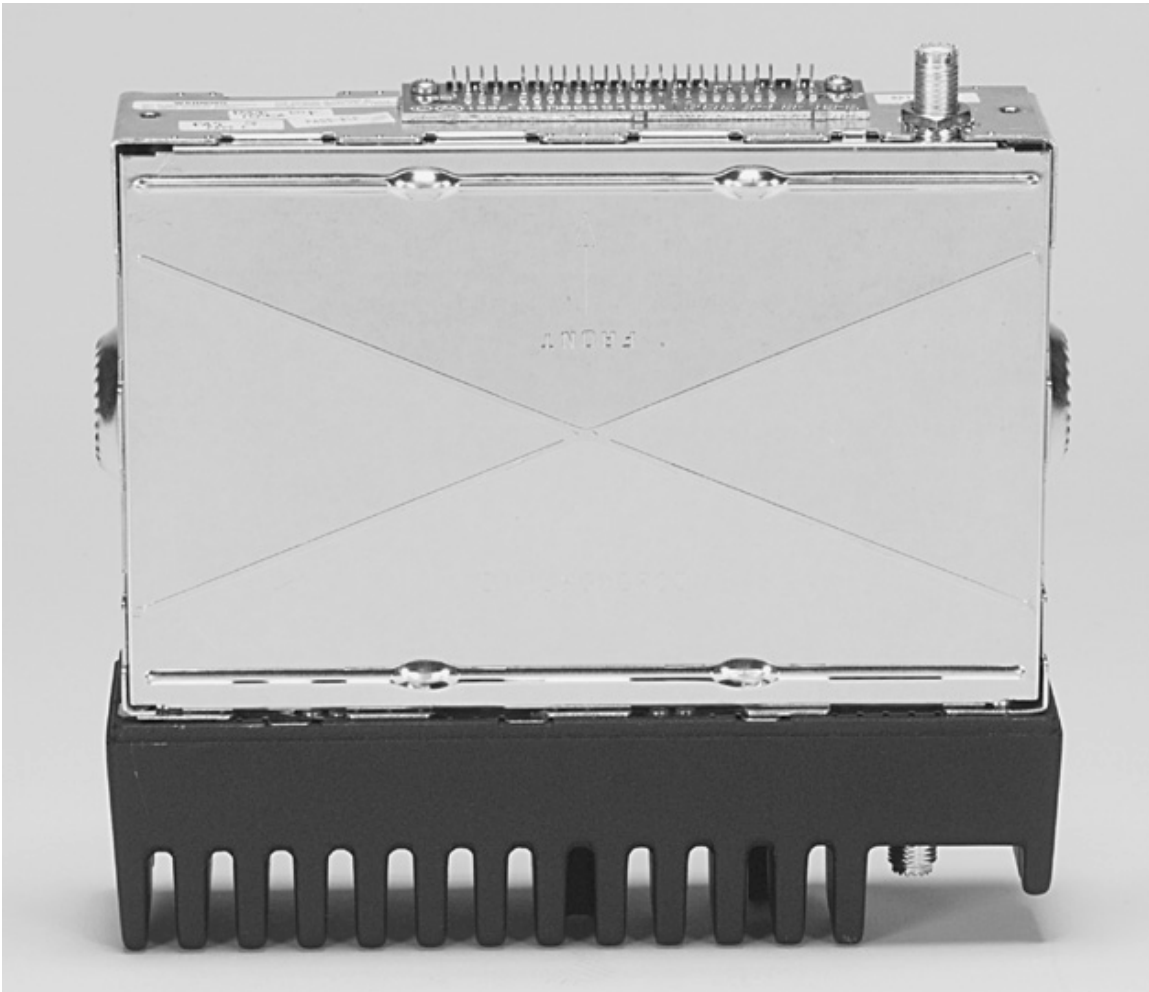
INTERNAL PHOTOGRAPHS

The following photographs showing the internal construction of the transceiver and the optional repeater are in this exhibit:

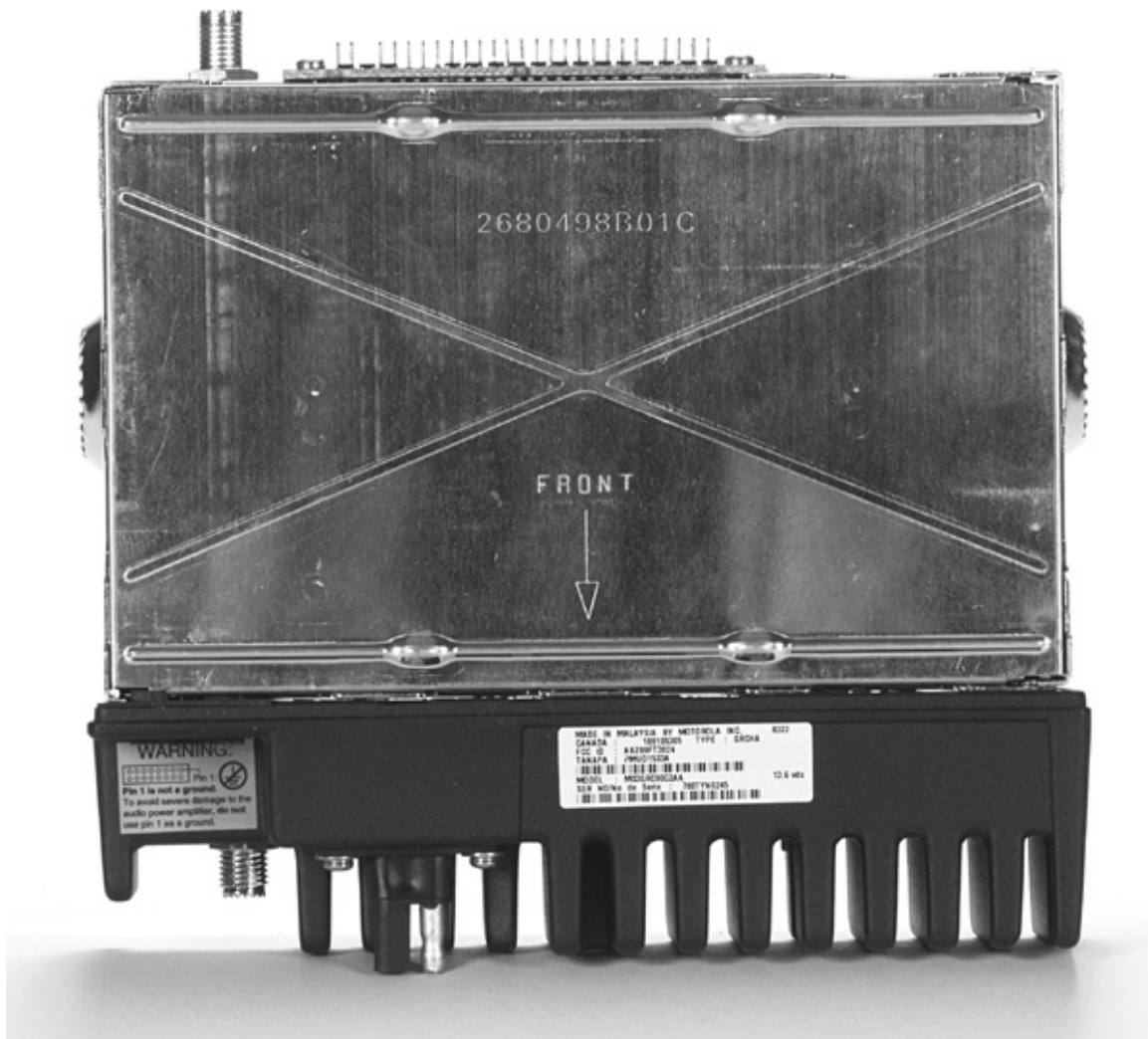
- | | |
|-----------------|---|
| Sheet 2 | Transceiver front view without cover. |
| Sheet 3 | Transceiver top view without top cover. |
| Sheet 4 | Transceiver bottom view without bottom cover. |
| Sheet 5 | Transceiver bottom view without cover and shield. |
| Sheet 6 | Transceiver top view without cover and shield. |
| Sheet 7 | RF PA front view with shield. |
| Sheet 8 | RF PA front view without shield. |
| Sheet 9 | Front view of disassembled optional housing with desk microphone. |
| Sheet 10 | Rear view of disassembled optional housing with transceiver. |
| Sheet 11 | Optional front cover attached to transceiver and desk microphone. |



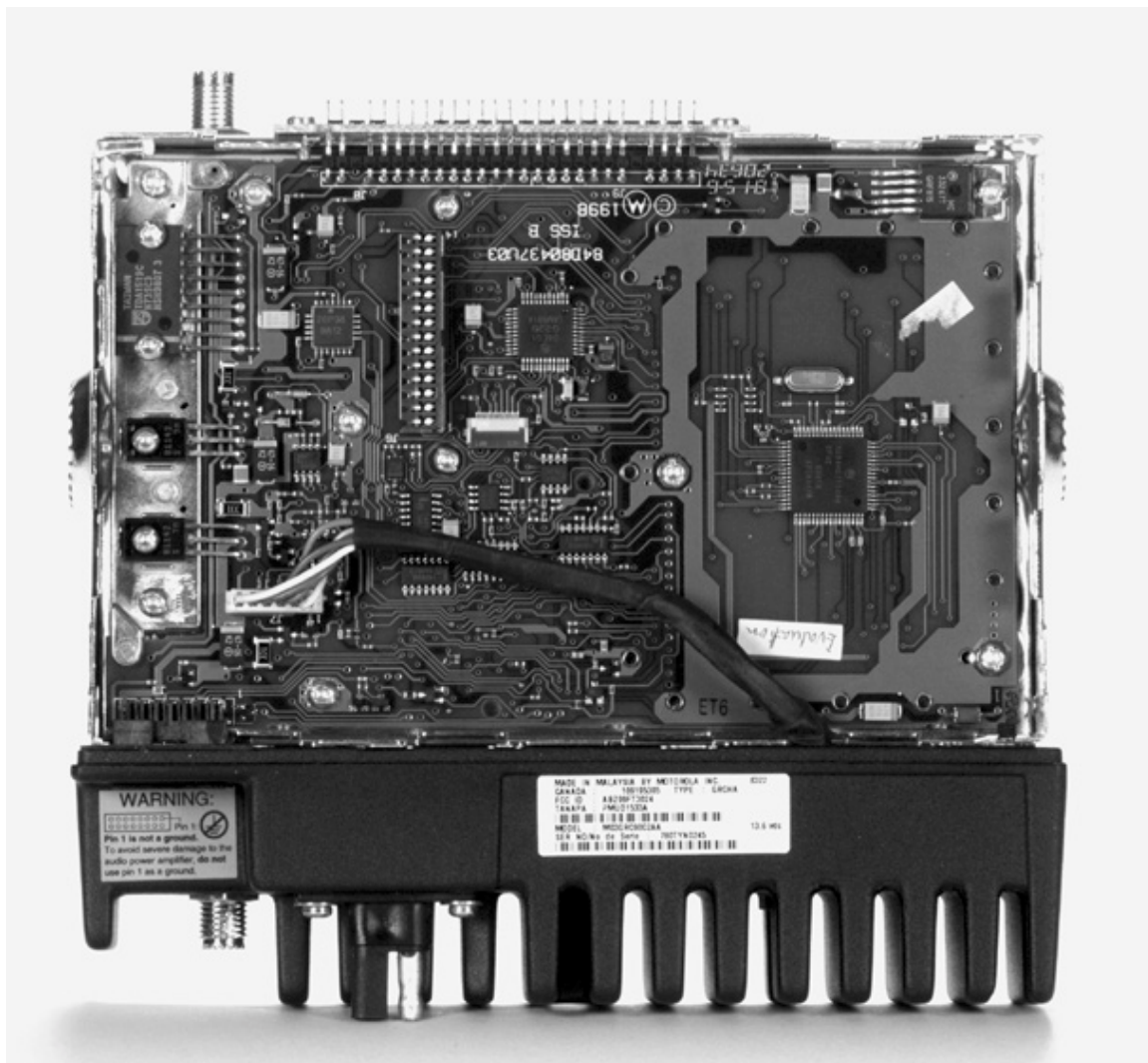
TRANSCIVER FRONT VIEW WITHOUT COVER



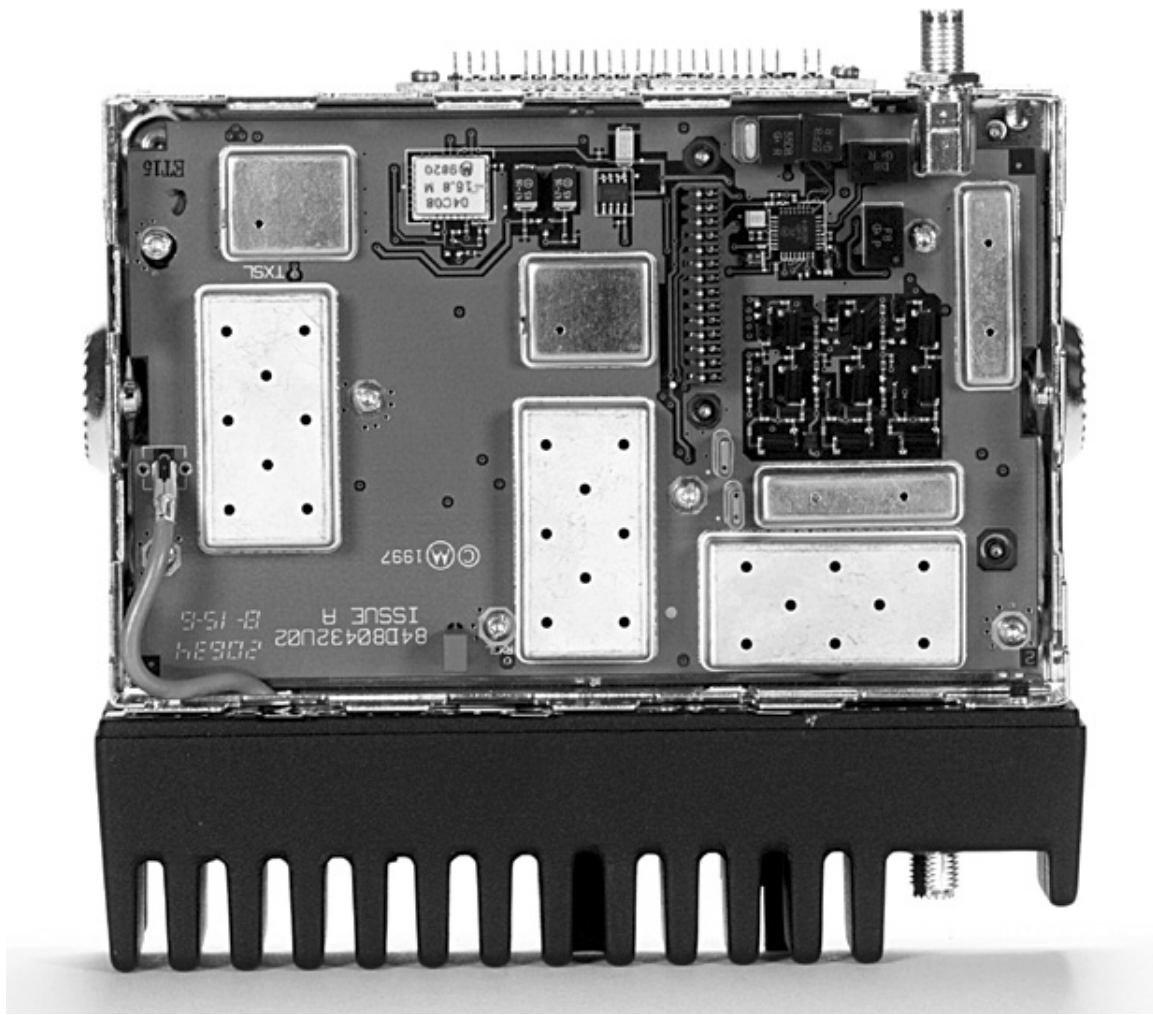
TRANSCEIVER TOP VIEW WITHOUT TOP COVER



TRANSCIVER BOTTOM VIEW WITHOUT BOTTOM COVER



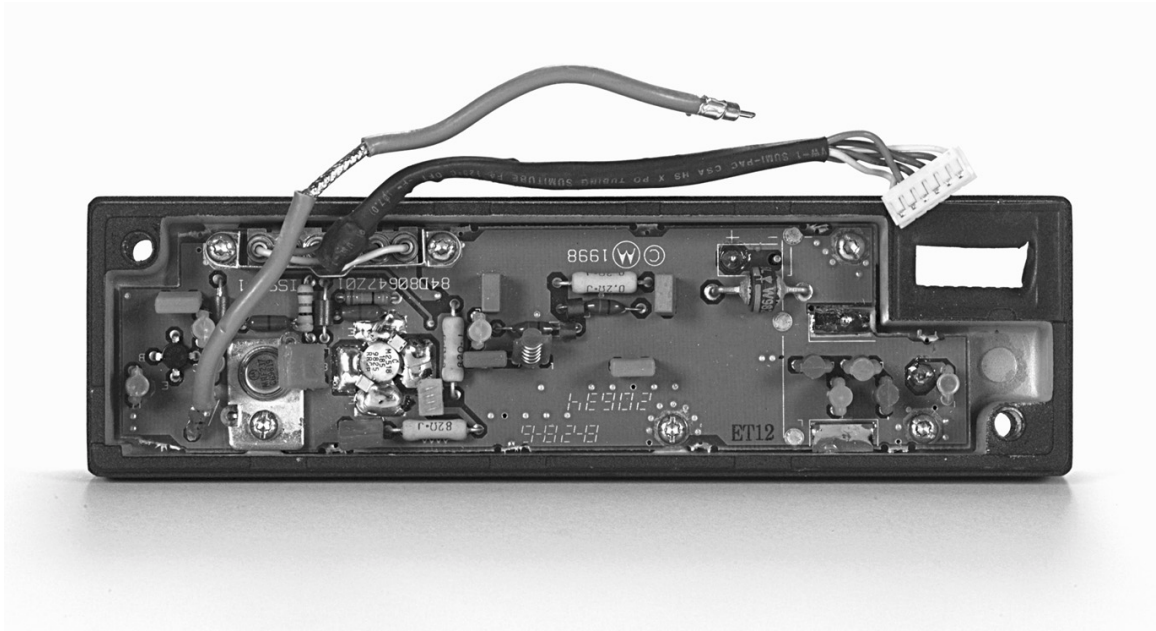
TRANSCEIVER BOTTOM VIEW WITHOUT COVER AND SHIELD



TRANSCIVER TOP VIEW WITHOUT COVER AND SHIELD



RF PA FRONT VIEW WITH SHIELD



RF PA FRONT VIEW WITHOUT SHIELD



FRONT VIEW OF DISASSEMBLED OPTIONAL HOUSING WITH DESK MICROPHONE



REAR VIEW OF DISASSEMBLED OPTIONAL HOUSING WITH TRANSCEIVER



OPTIONAL FRONT COVER ATTACHED TO TRANSCEIVER AND DESK MICROPHONE