

**PHOTOGRAPHS -- INDEX**

<b><u>EXHIBIT</u></b>	<b><u>DESCRIPTION</u></b>
12A-1	Rear of Station Including Location of the FCC ID Label
12A-2	FCC Identification Label
12B	Linear Simulcast Station Base Radio -- Front View
12C	Exciter Module, Component Side **
12D-1	Power Amplifier Module, Top View, Shields Removed
12D-2	Power Amplifier Module, Heat Sink View
12E-1	Power Supply Module, Cover Removed
12E-2	Power Supply Module, Sub Board Removed **
12E-3	Power Supply Module, Sub Board Top Side
12E-4	Power Supply Module, Sub Board Bottom Side
12F	Base Radio Control Module, Component Side **
12G-1	Backplane Board, Front Side
12G-2	Backplane Board, Back Side
12H	Transmit Combiner, 2:1

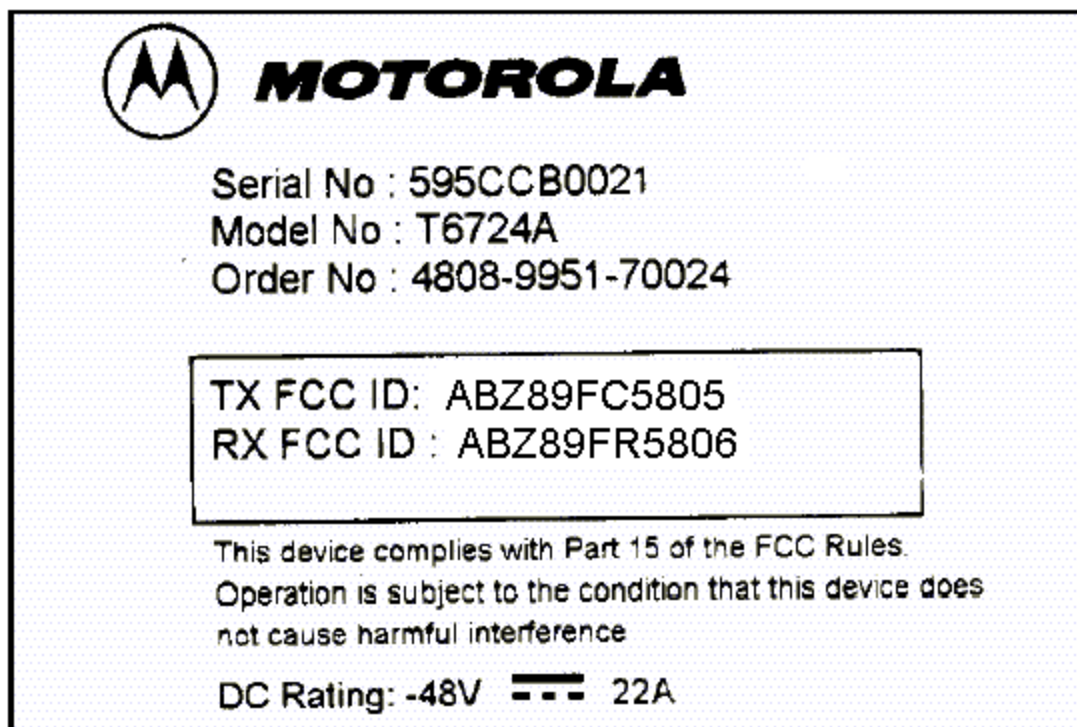
\*\* Indicates that there are no components and/or there is no significant circuitry on the backside of the board, therefore there is not a photo of the back side of the board included in this package.

APPLICANT: MOTOROLA INC.

EQUIPMENT TYPE: ABZ89FC5805



Rear of Station Including Location of the FCC ID Label



FCC Identification Label

APPLICANT: MOTOROLA INC.

EQUIPMENT TYPE: ABZ89FC5805



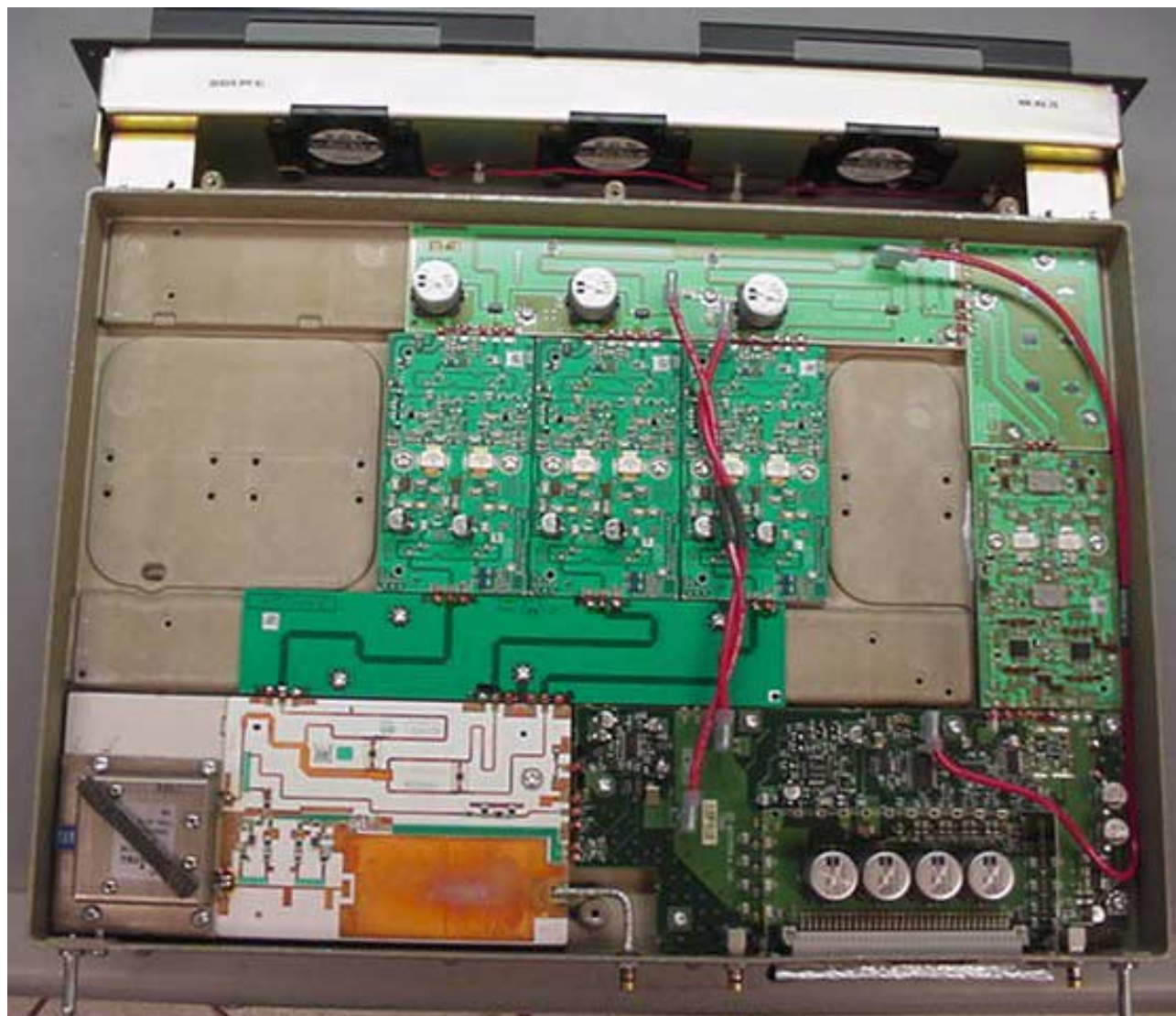
Linear Simulcast Station Base Radio -- Front View

EXHIBIT 12B



Exciter Module, Component Side





Power Amplifier Module, Top View, Shields Removed



Power Amplifier Module, Heat Sink View

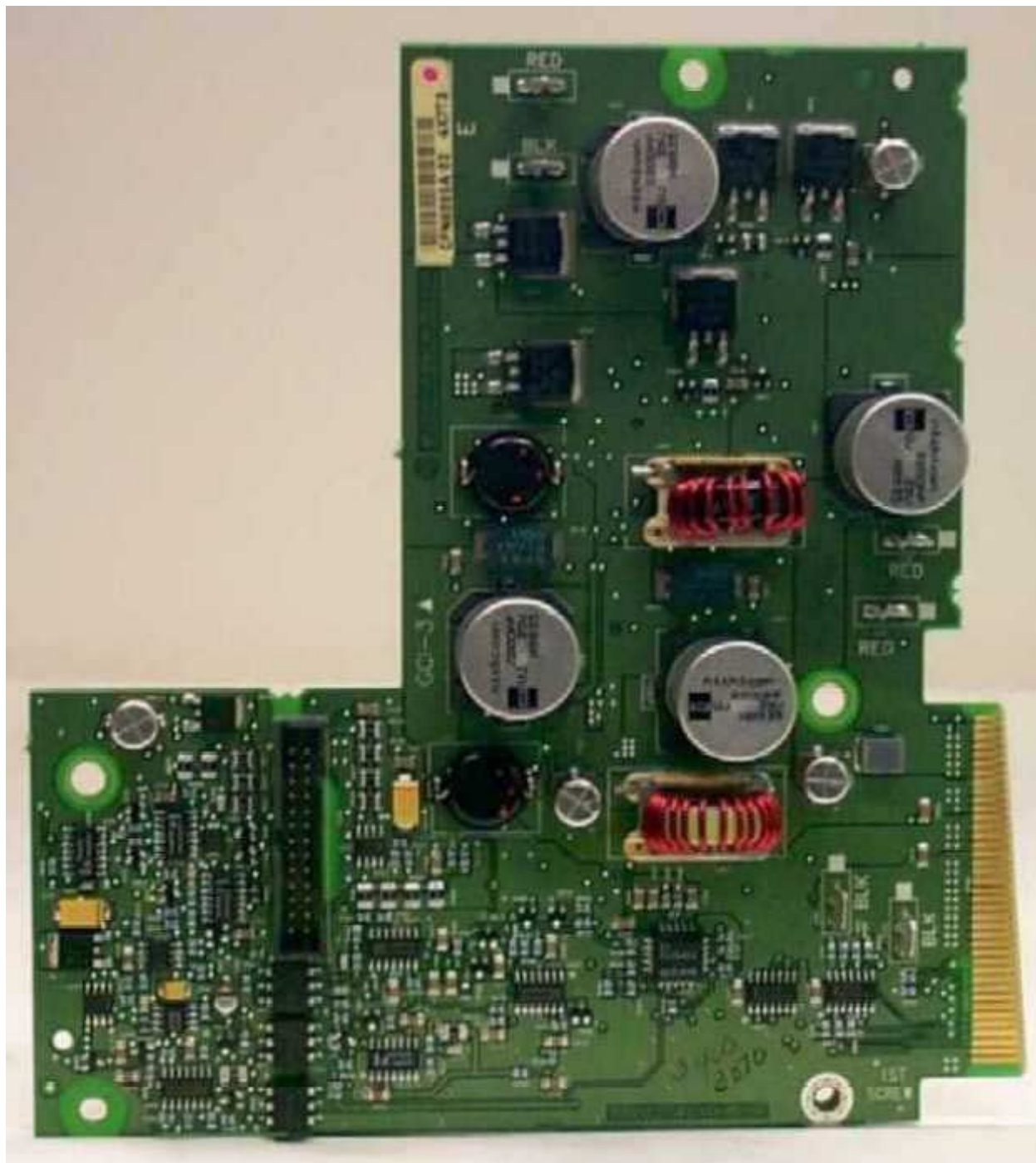


Power Supply Module, Cover Removed

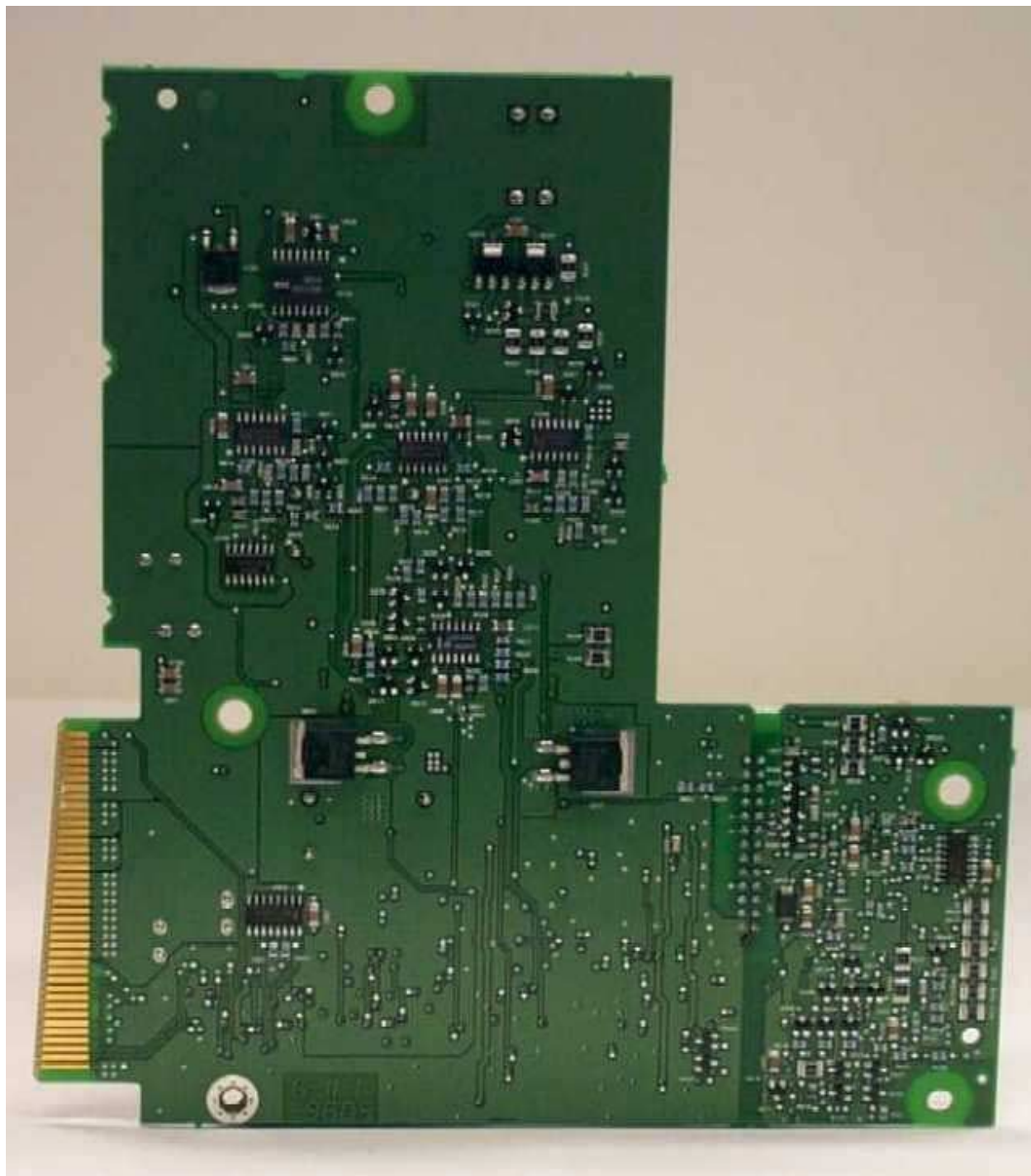




Power Supply Module, Component Side, Sub Board Removed



Power Supply Module, Sub Board Top Side



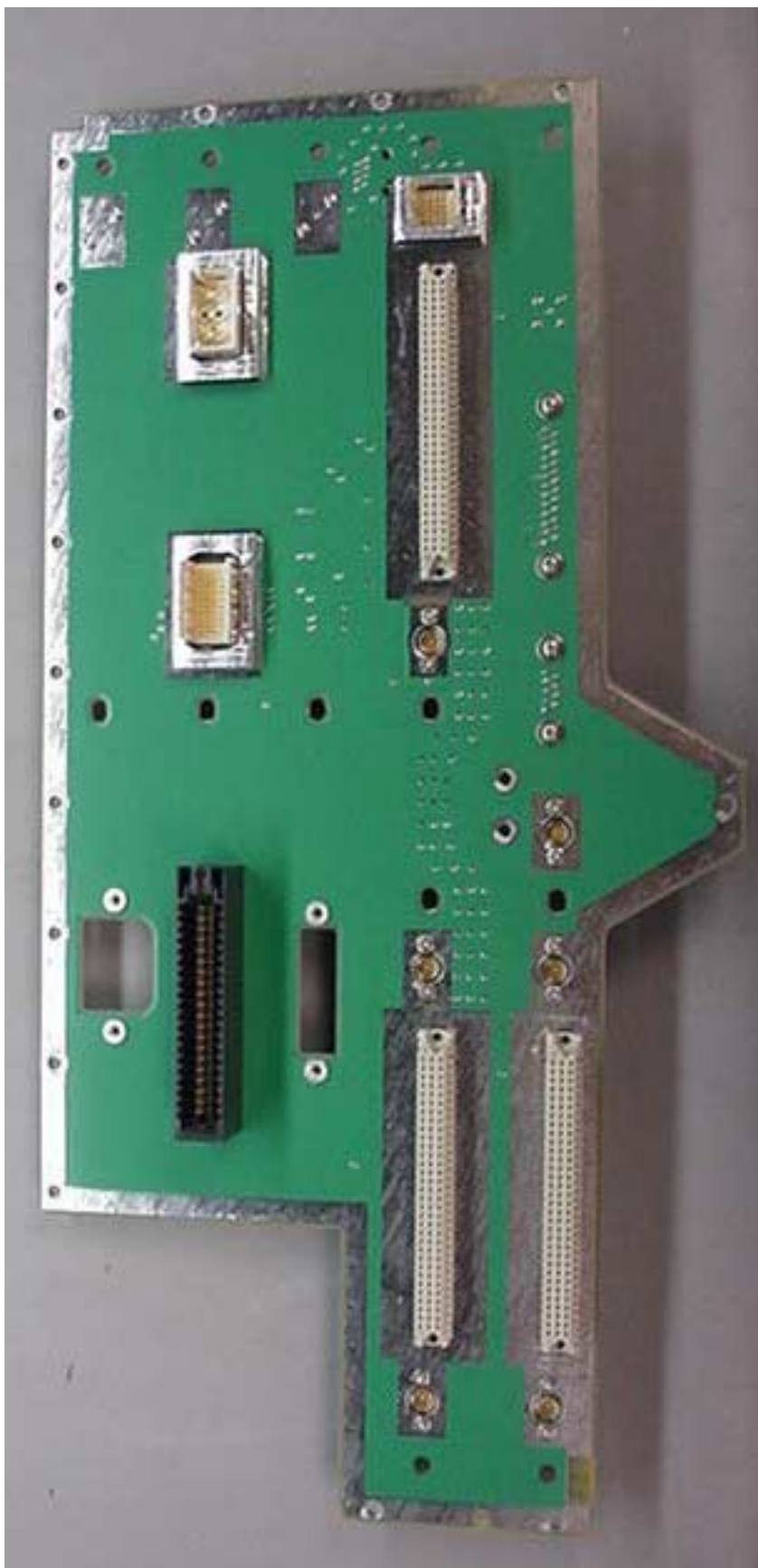
Power Supply Module, Sub Board Bottom Side



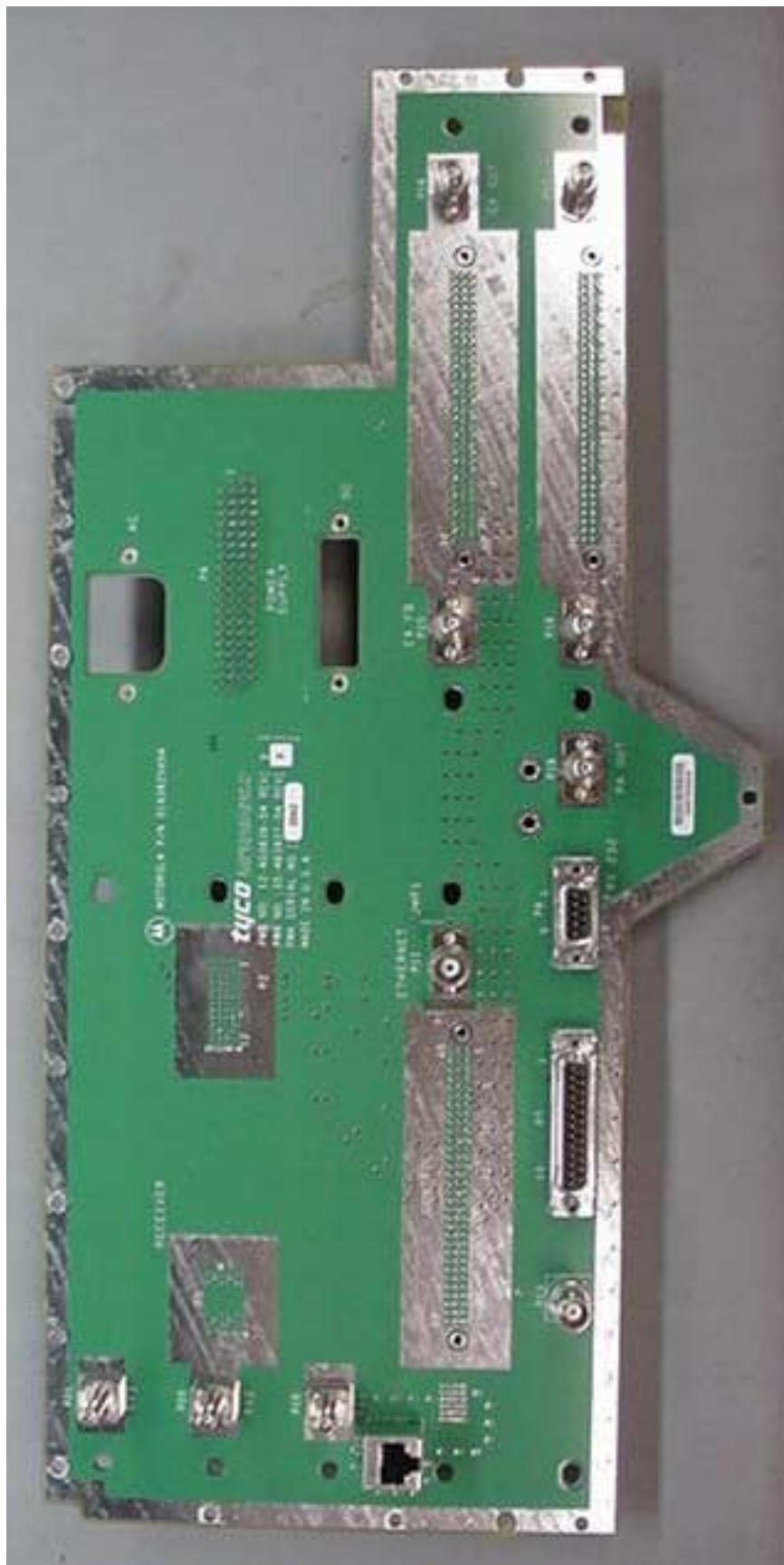


Base Radio Control Module, Component Side





Backplane Board, Front Side



Backplane Board, Back Side



Transmit Combiner: (2:1 Shown)