

Photographs of the Device

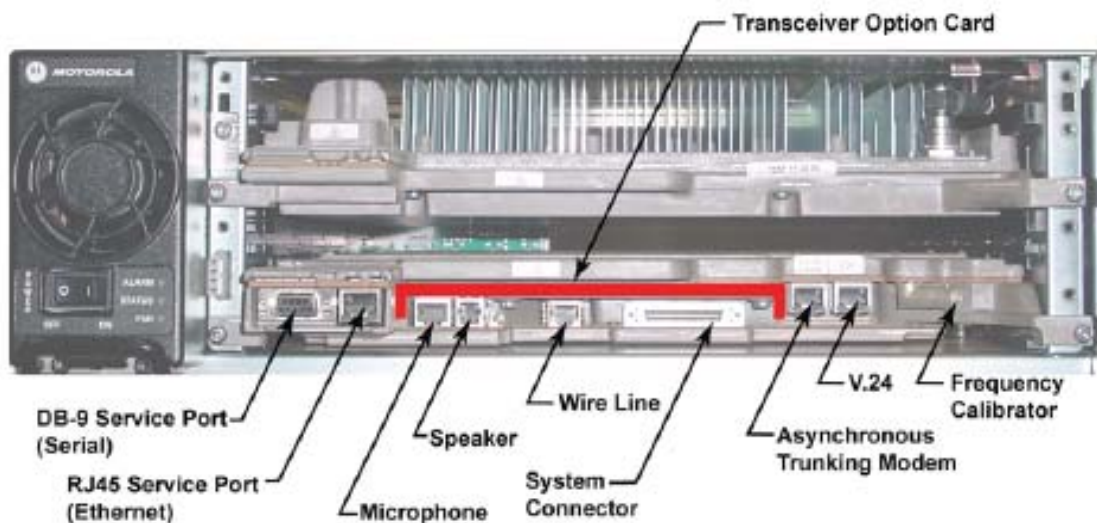
Internal Front View – Transceiver Module



Transceiver Module without the Transceiver Option Card (TOC)



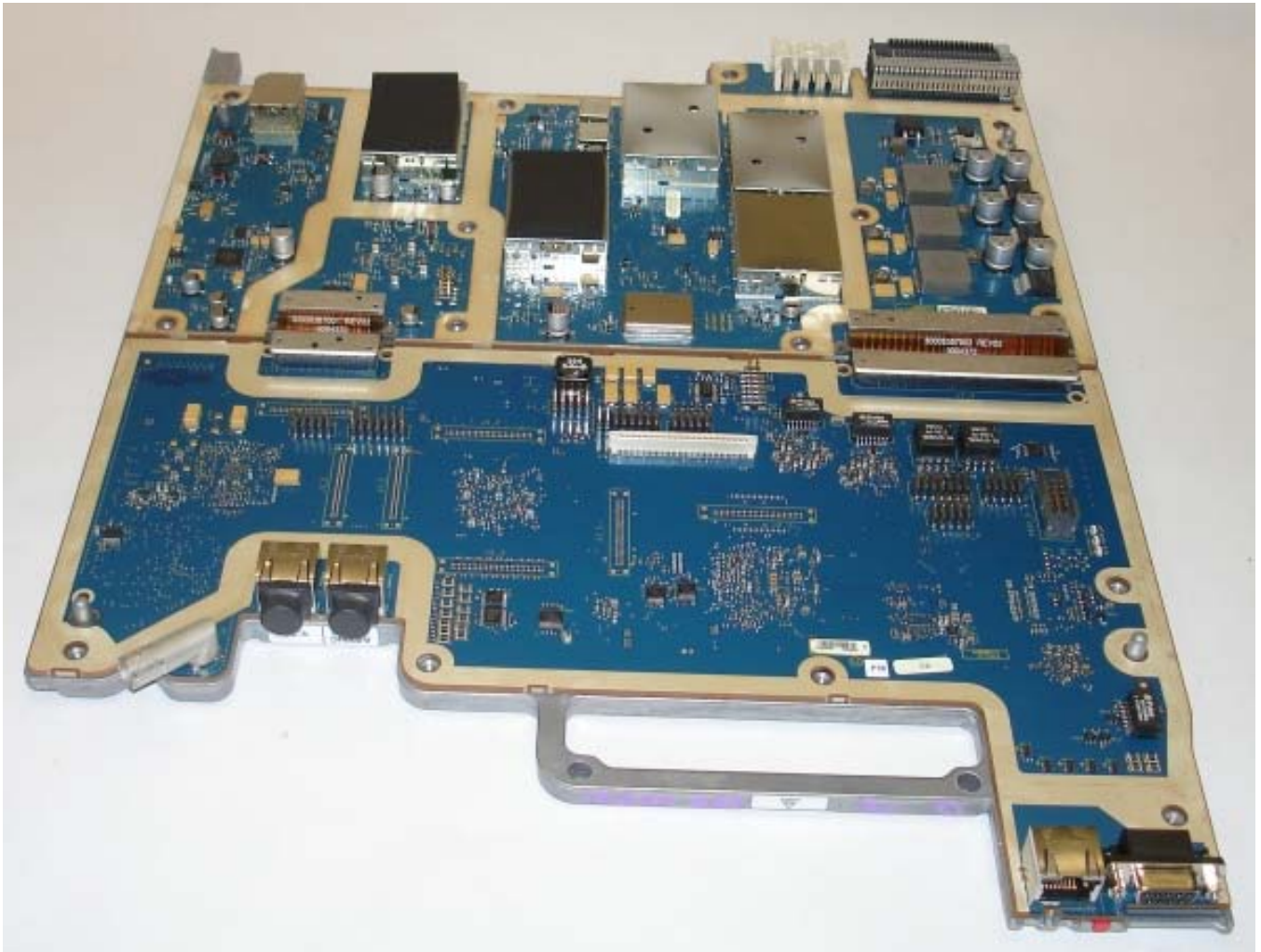
Transceiver Module with the Transceiver Option Card (TOC) Installed



Front View of Base Radio Showing Transceiver Module with TOC Installed and Identifying Connections

Photographs of the Device

Internal Front View – Transceiver Module Circuit Board Top View

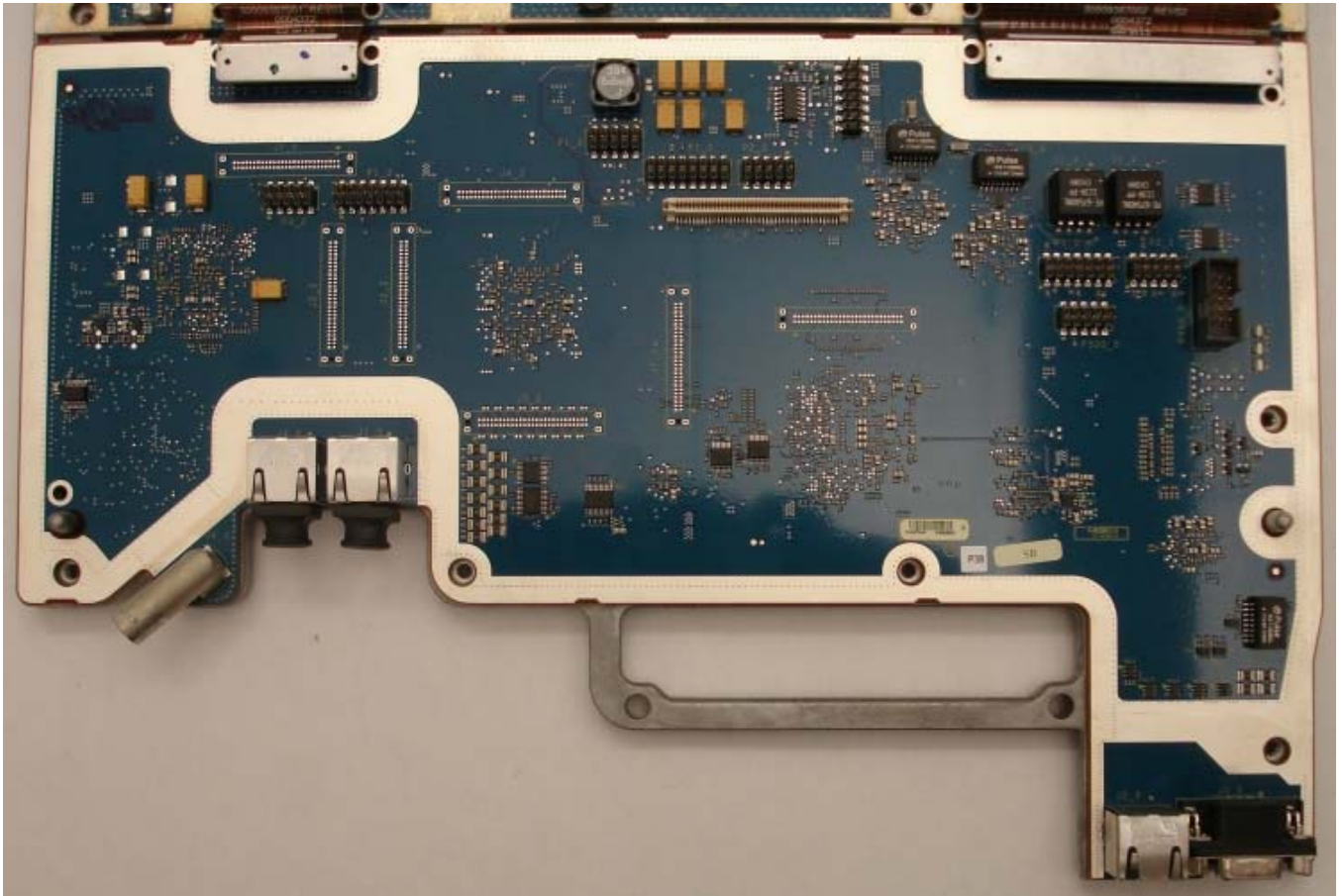


APPLICANT: MOTOROLA SOLUTIONS

**EQUIPMENT TYPE: ABZ89FC4821B
109AB-4821B**

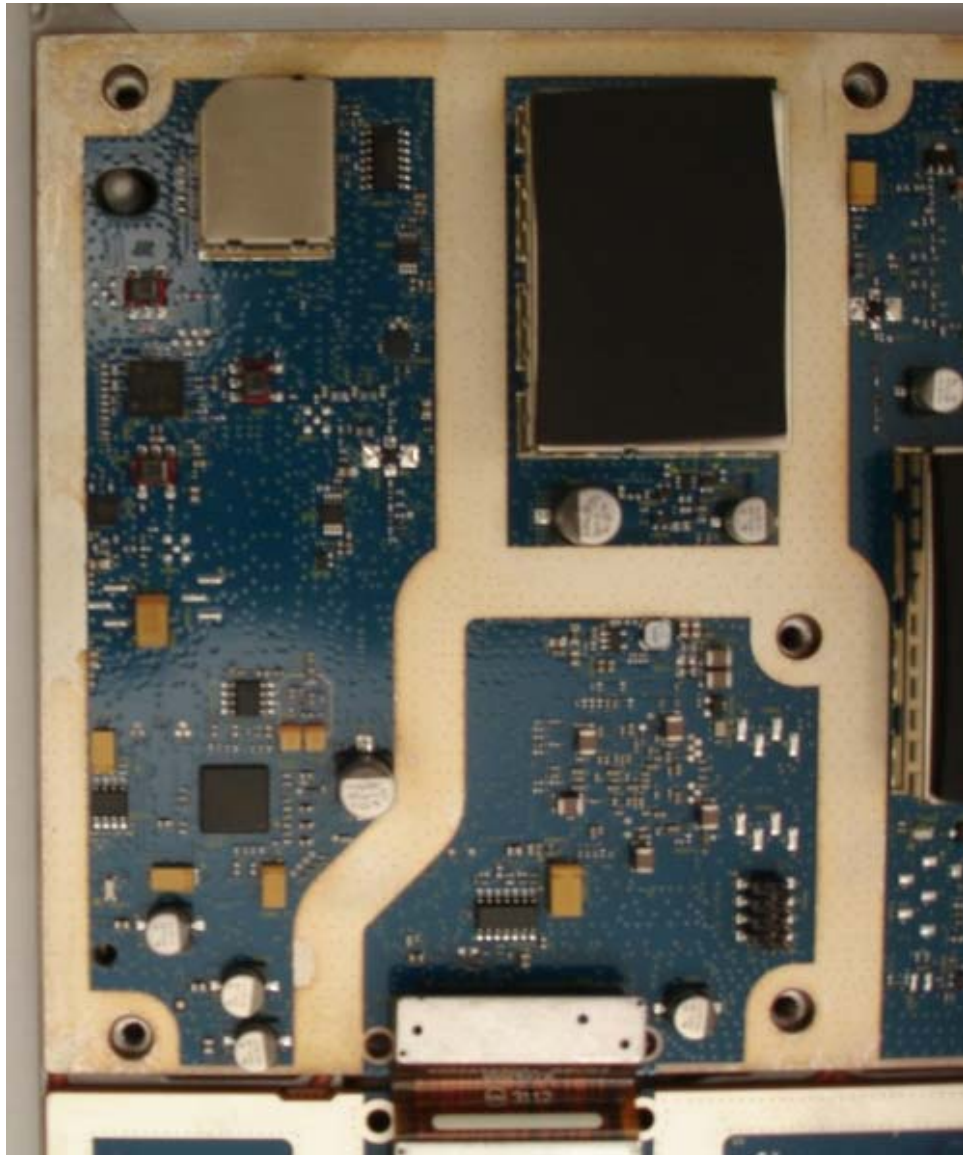
Photographs of the Device

Internal Front View – Transceiver Module, Control Section



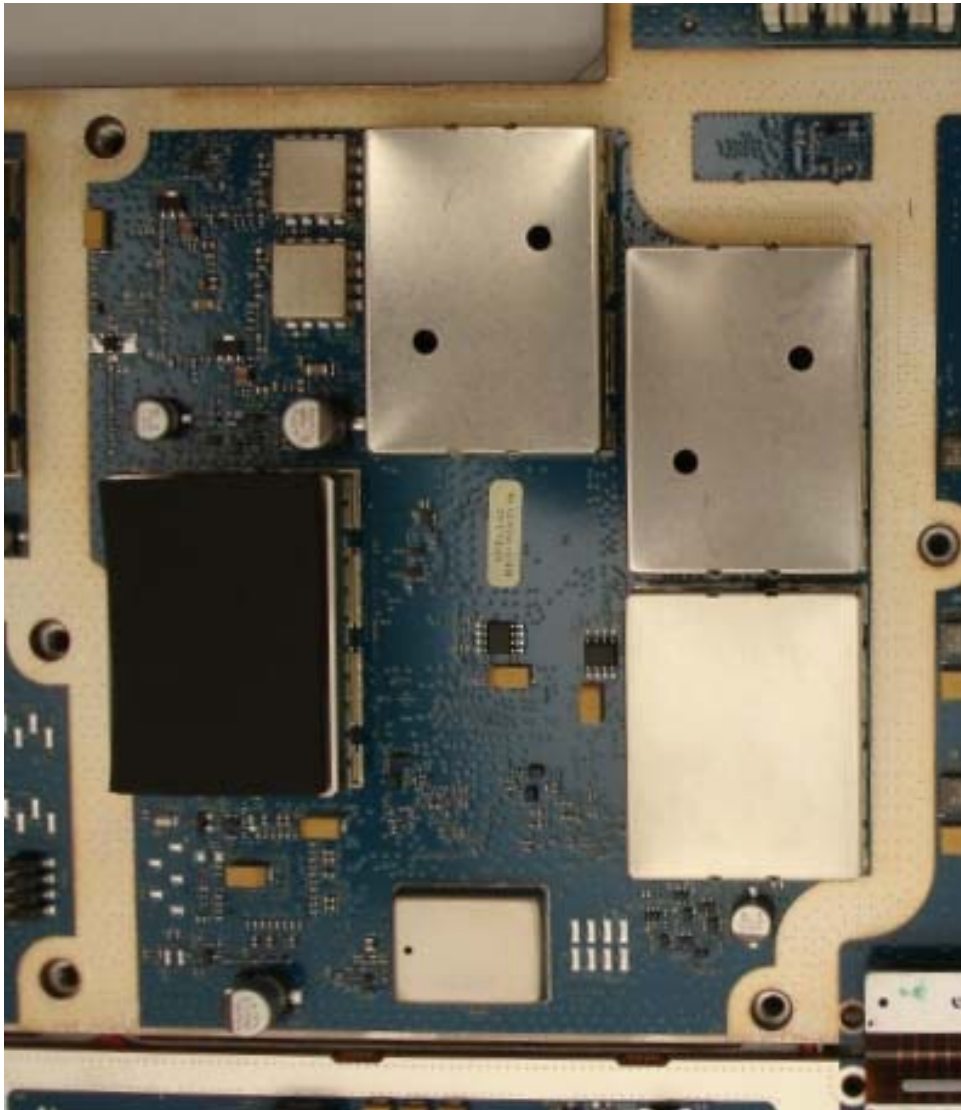
Photographs of the Device

Internal Front View – Transceiver Module, Exciter Section



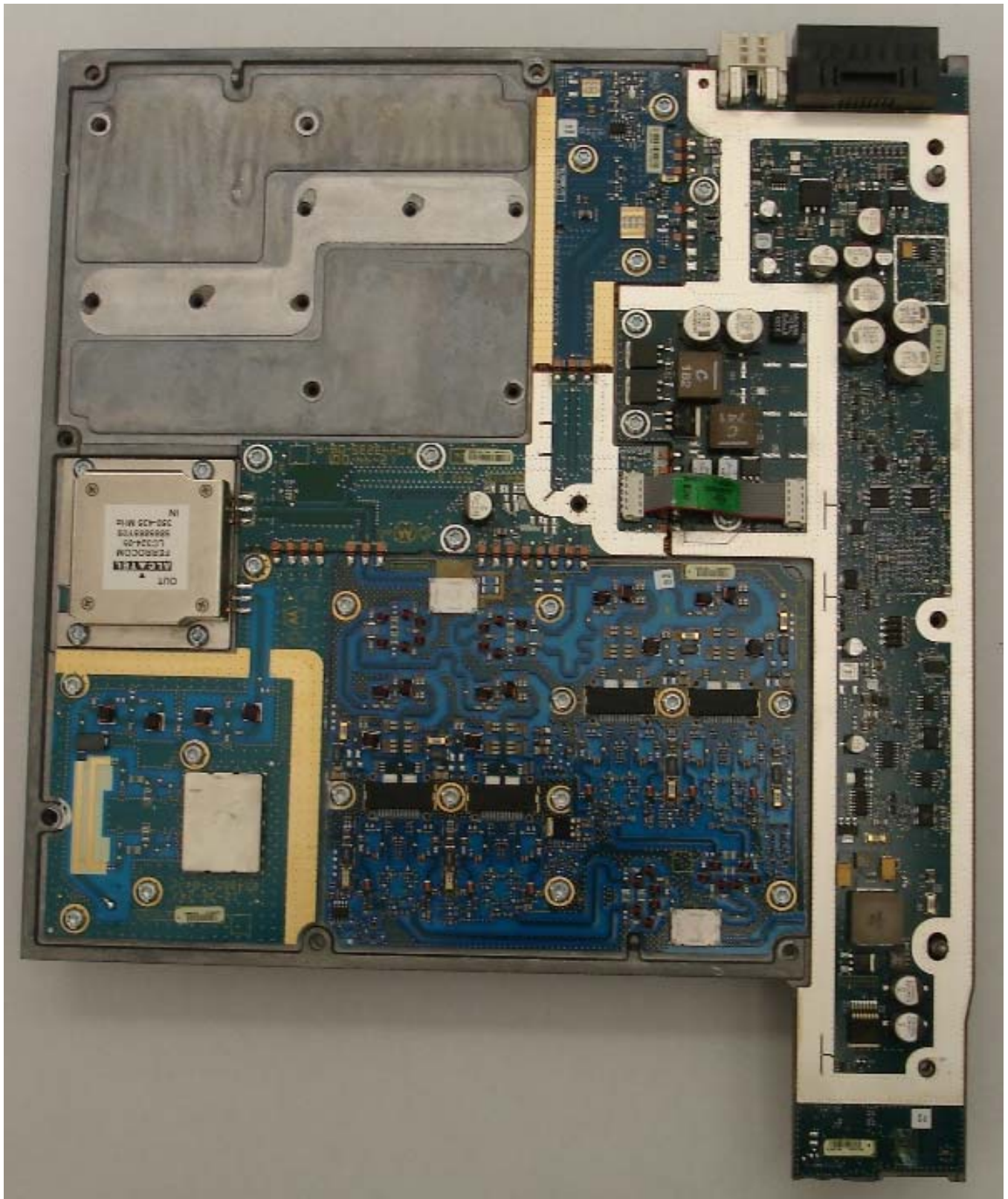
Photographs of the Device

Internal Front View – Transceiver Module, Receiver Section



Photographs of the Device

Internal Front View – Power Amplifier Module, Cover Removed



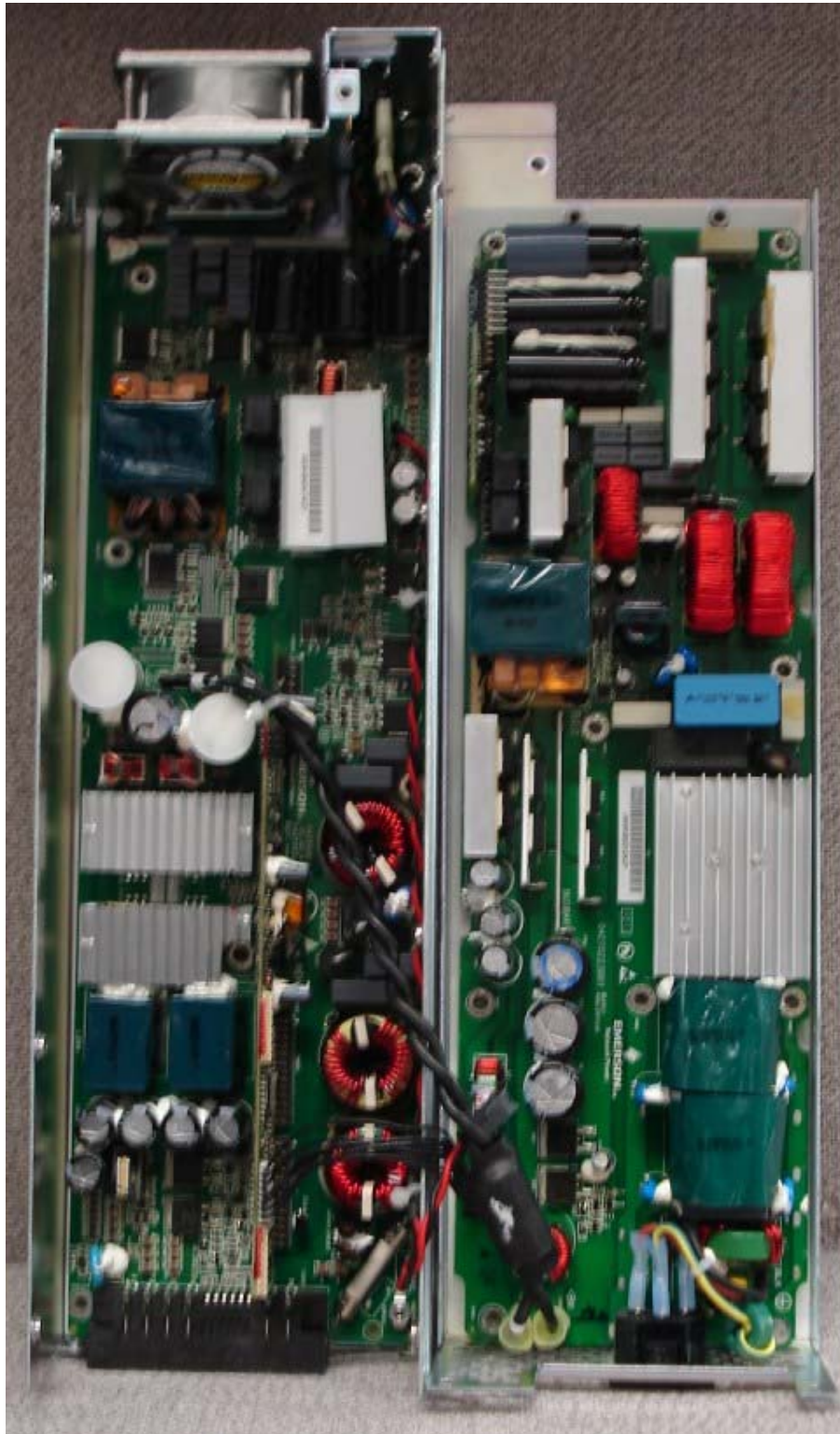
Photographs of the Device

Internal Front View – Power Supply Module



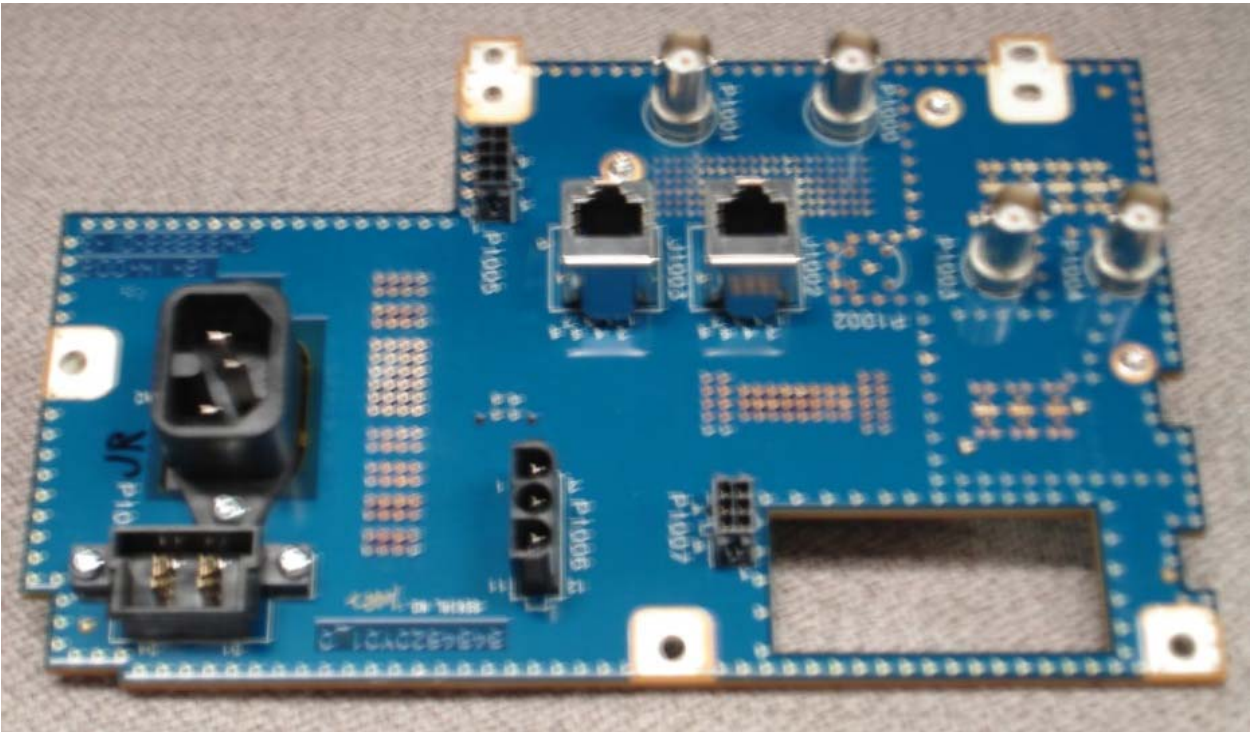
Photographs of the Device

Internal Front View – Power Supply Module, Circuit Boards, Top View



Photographs of the Device

Internal Front View – Backplane



Photographs of the Device

Internal Front View – Transceiver Option Card (TOC)

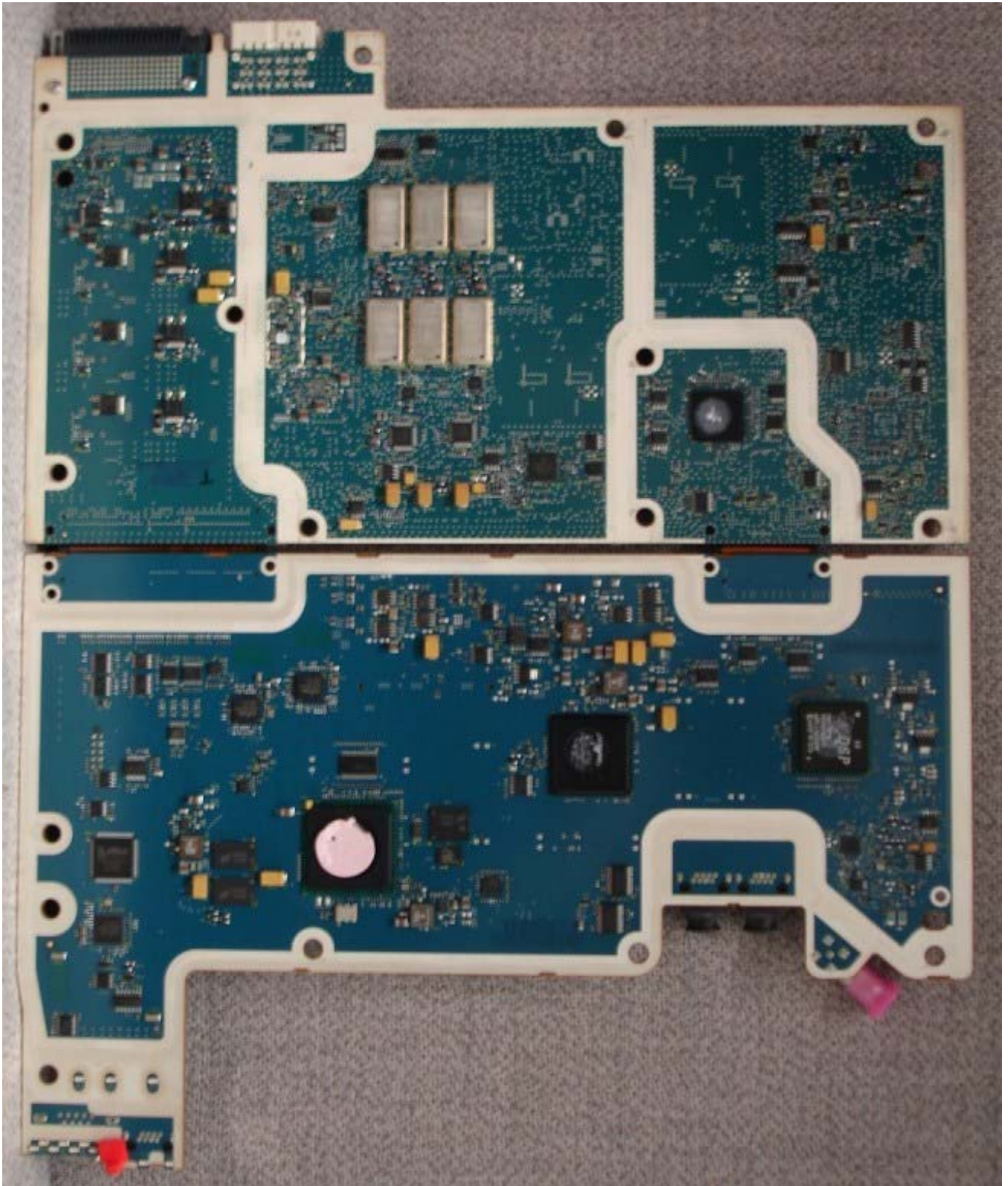


APPLICANT: MOTOROLA SOLUTIONS

EQUIPMENT TYPE: ABZ89FC4821B
109AB-4821B

Photographs of the Device

Internal Back View – Transceiver Module



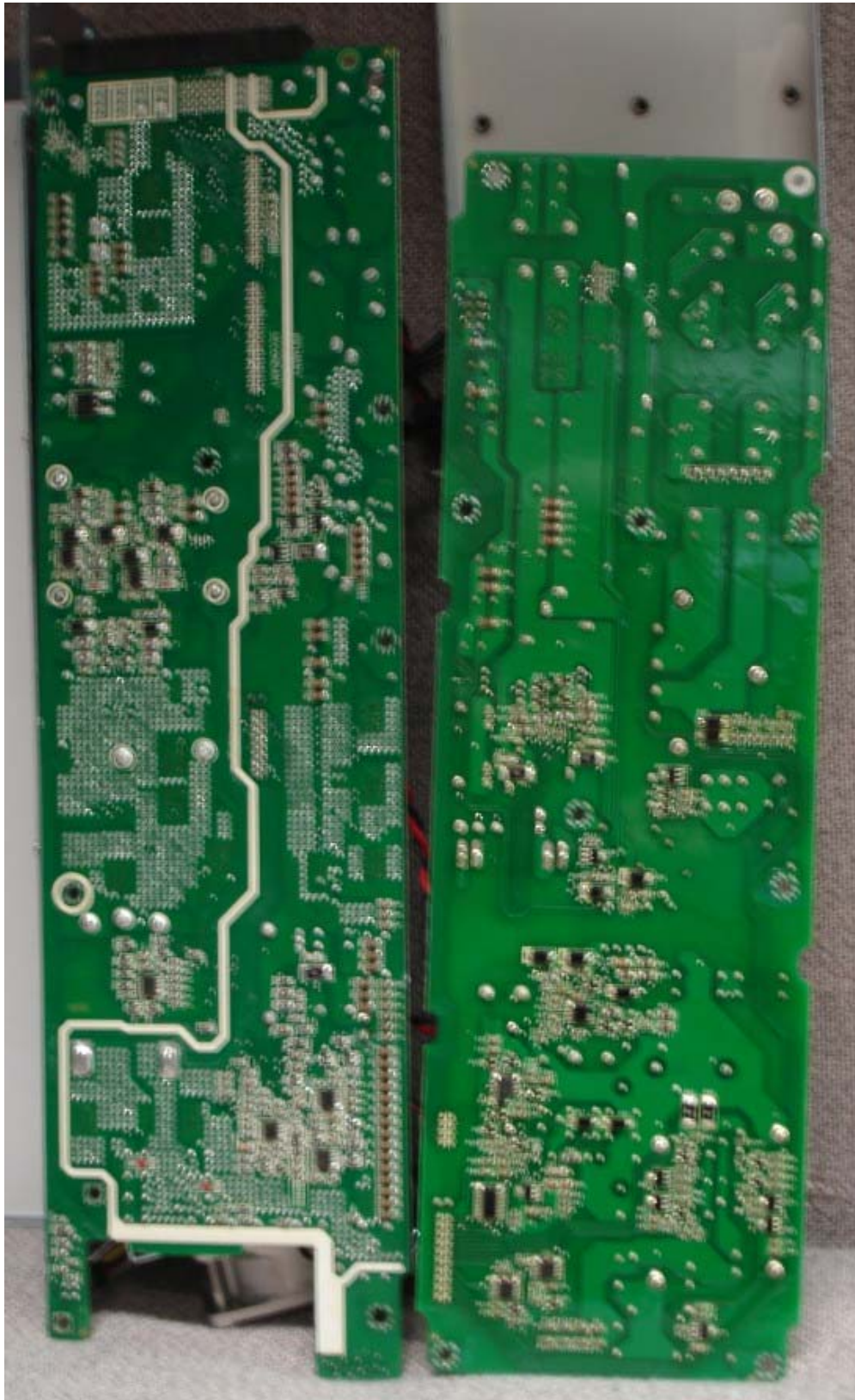
Photographs of the Device

Internal Back View – Power Amplifier Module



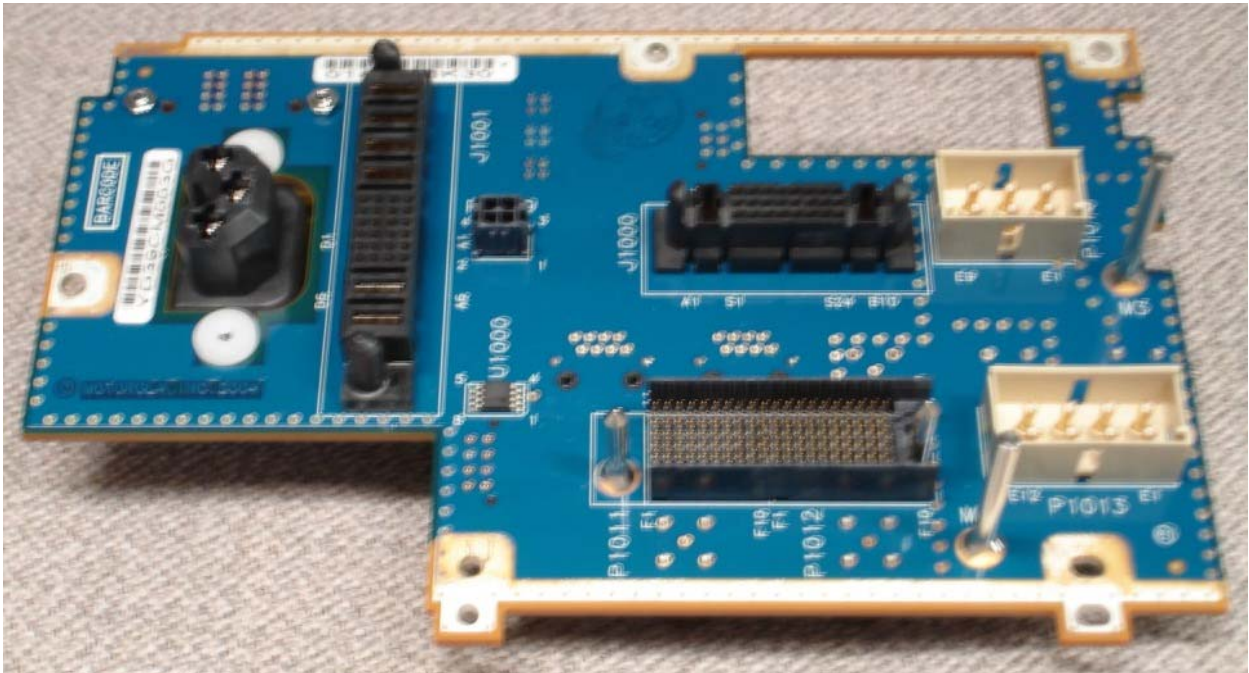
Photographs of the Device

Internal Back View – Power Supply Module, Circuit Boards, Back View



Photographs of the Device

Internal Back View – Backplane



Photographs of the Device

Internal Back View – Transceiver Option Card (TOC)

