

Photographs of the Device

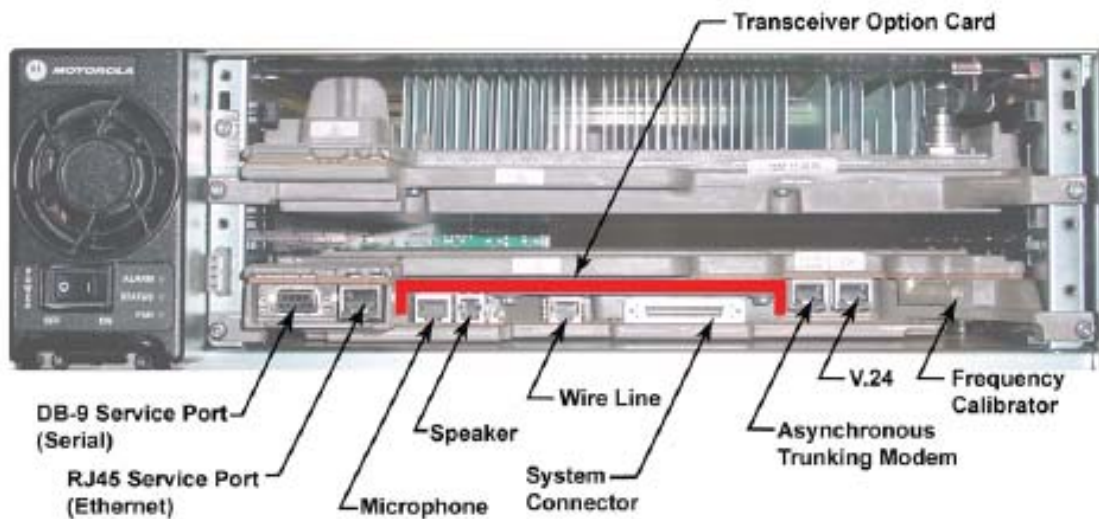
Internal Front View – Transceiver Module



Transceiver Module without the Supplementary Audio Card (SAC)



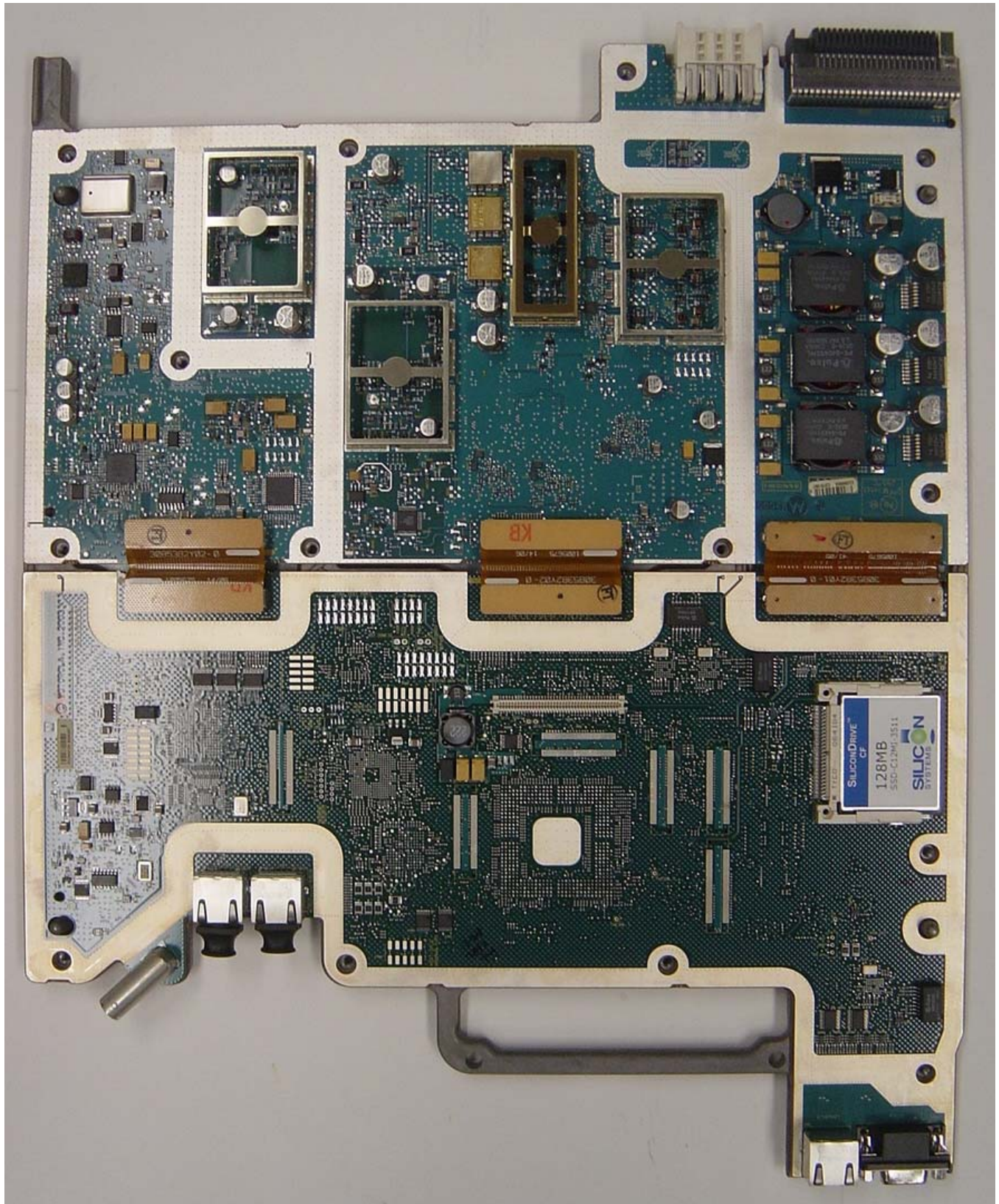
Transceiver Module with the Supplementary Audio Card (SAC) Installed



Front View of Base Radio Showing Transceiver Module with SAC Installed and Identifying Connections

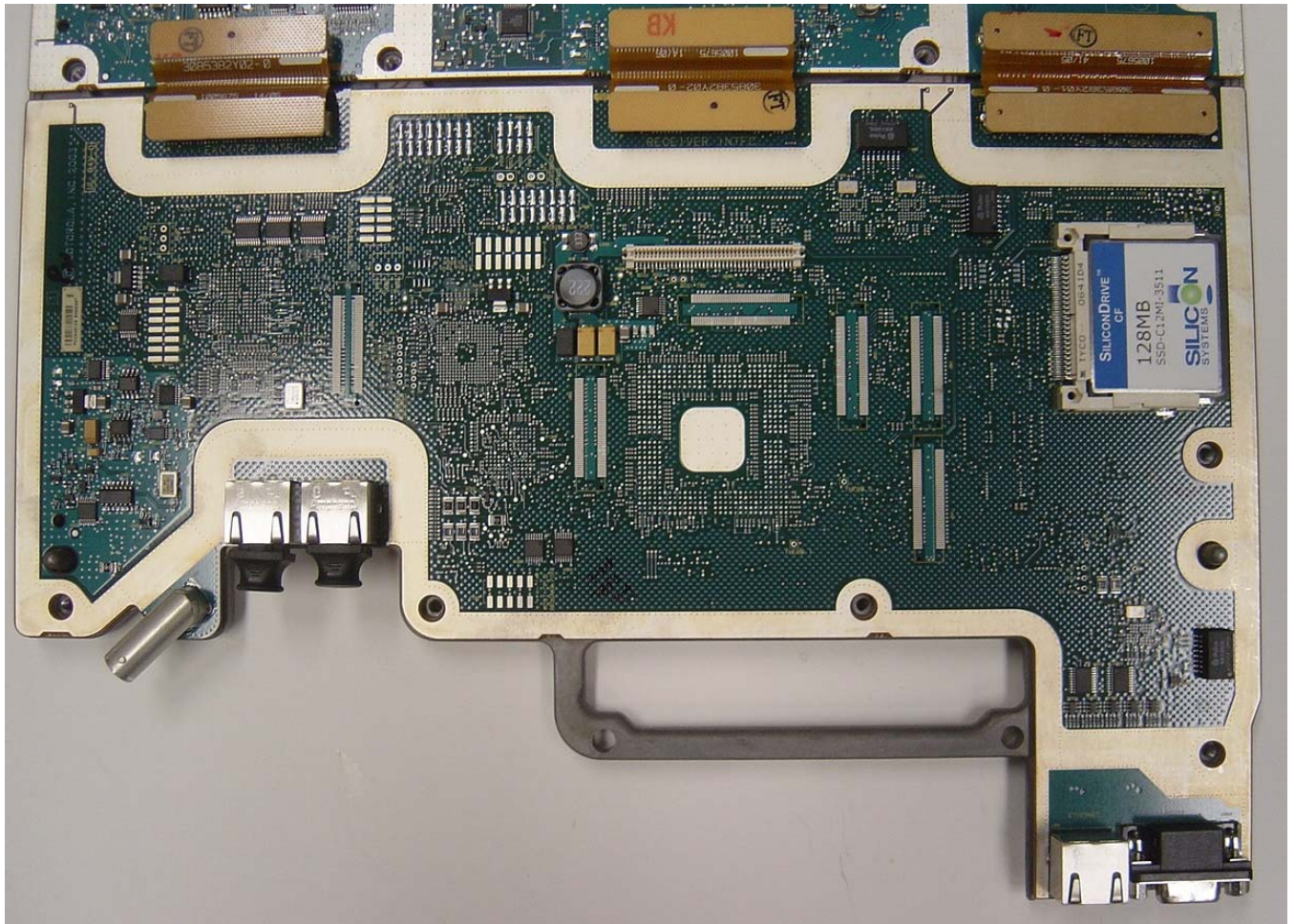
Photographs of the Device

Internal Front View – Transceiver Module Circuit Board Top View



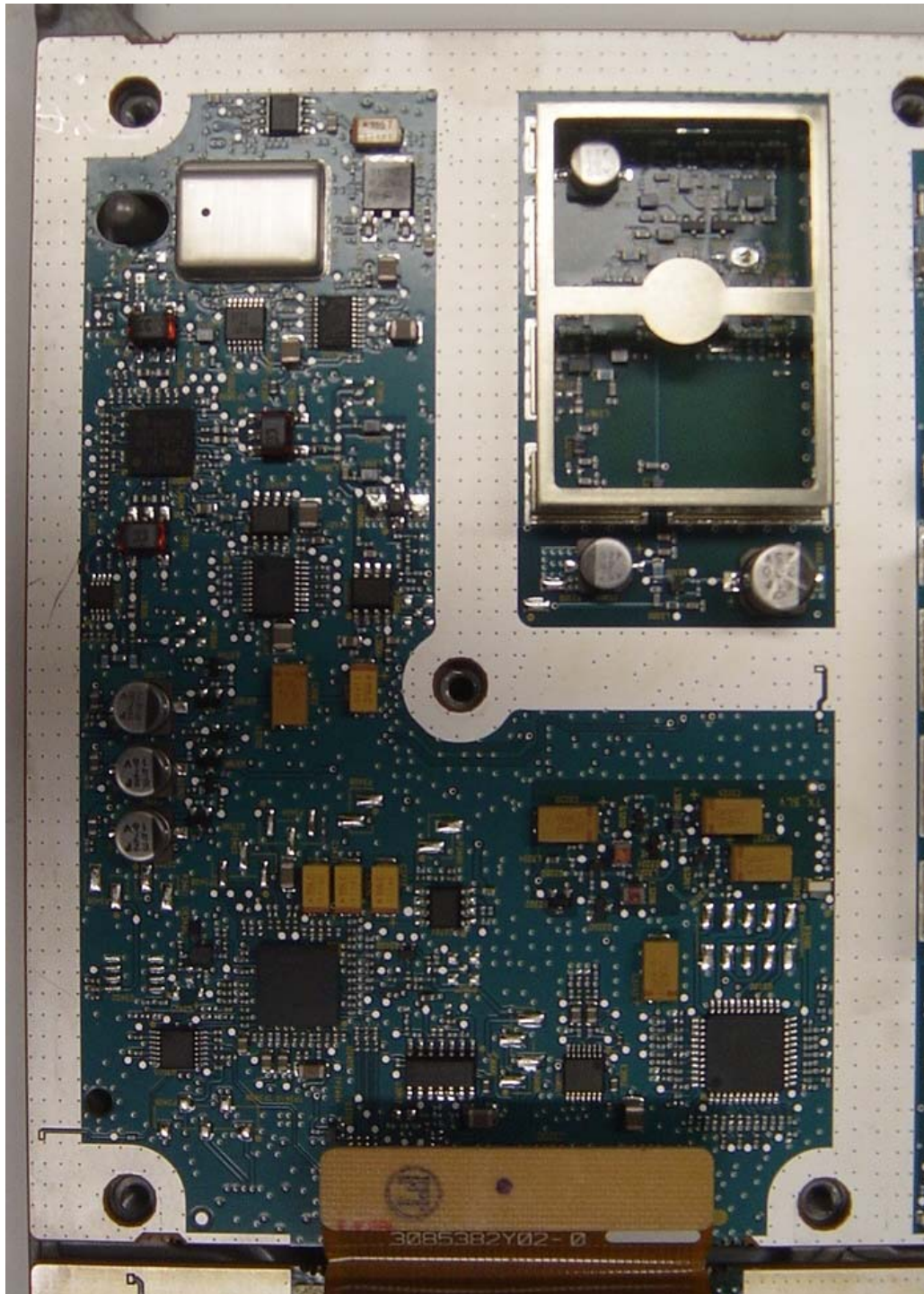
Photographs of the Device

Internal Front View – Transceiver Module, Control Section



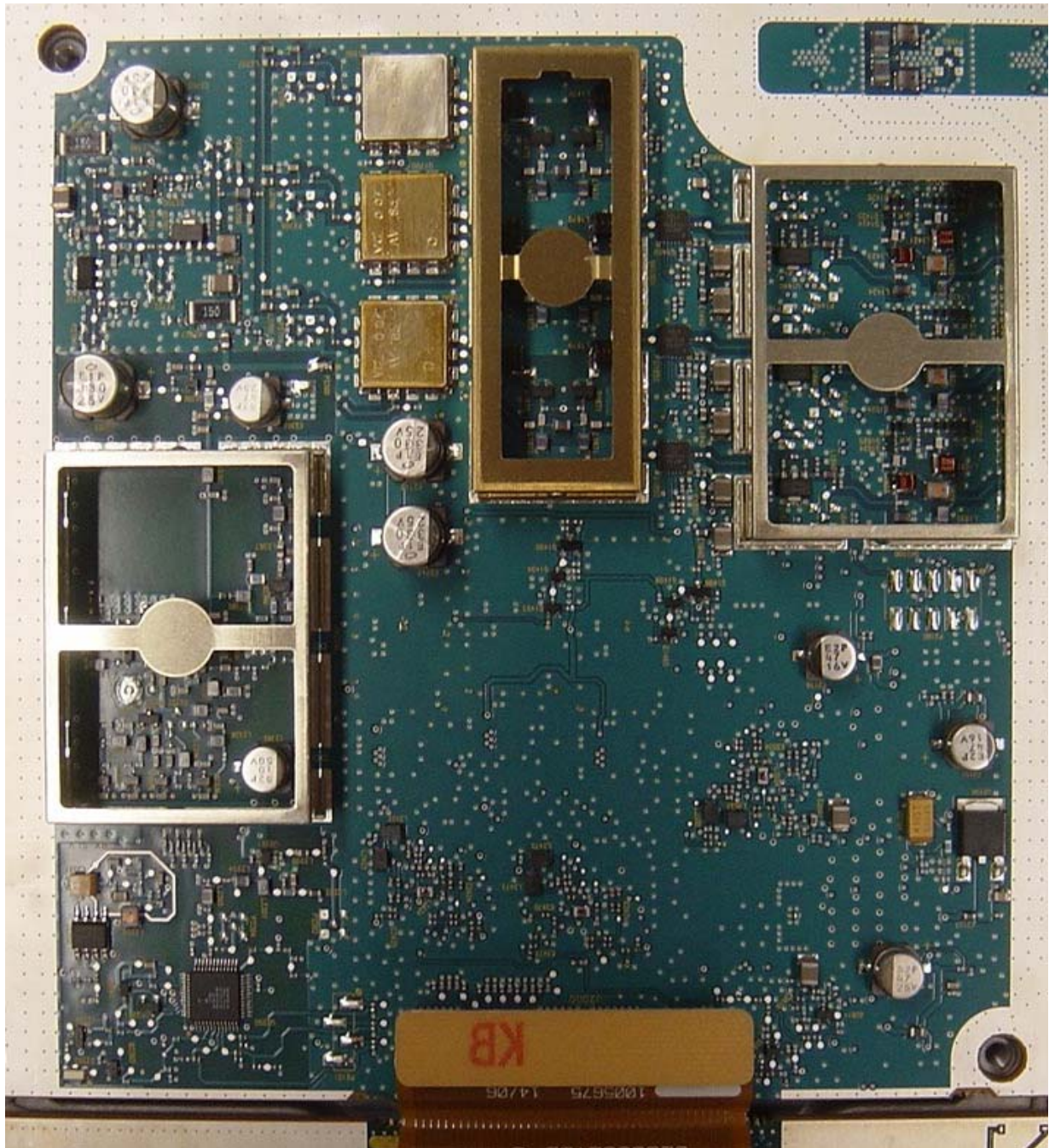
Photographs of the Device

*Internal Front View – Transceiver Module, Exciter Section*



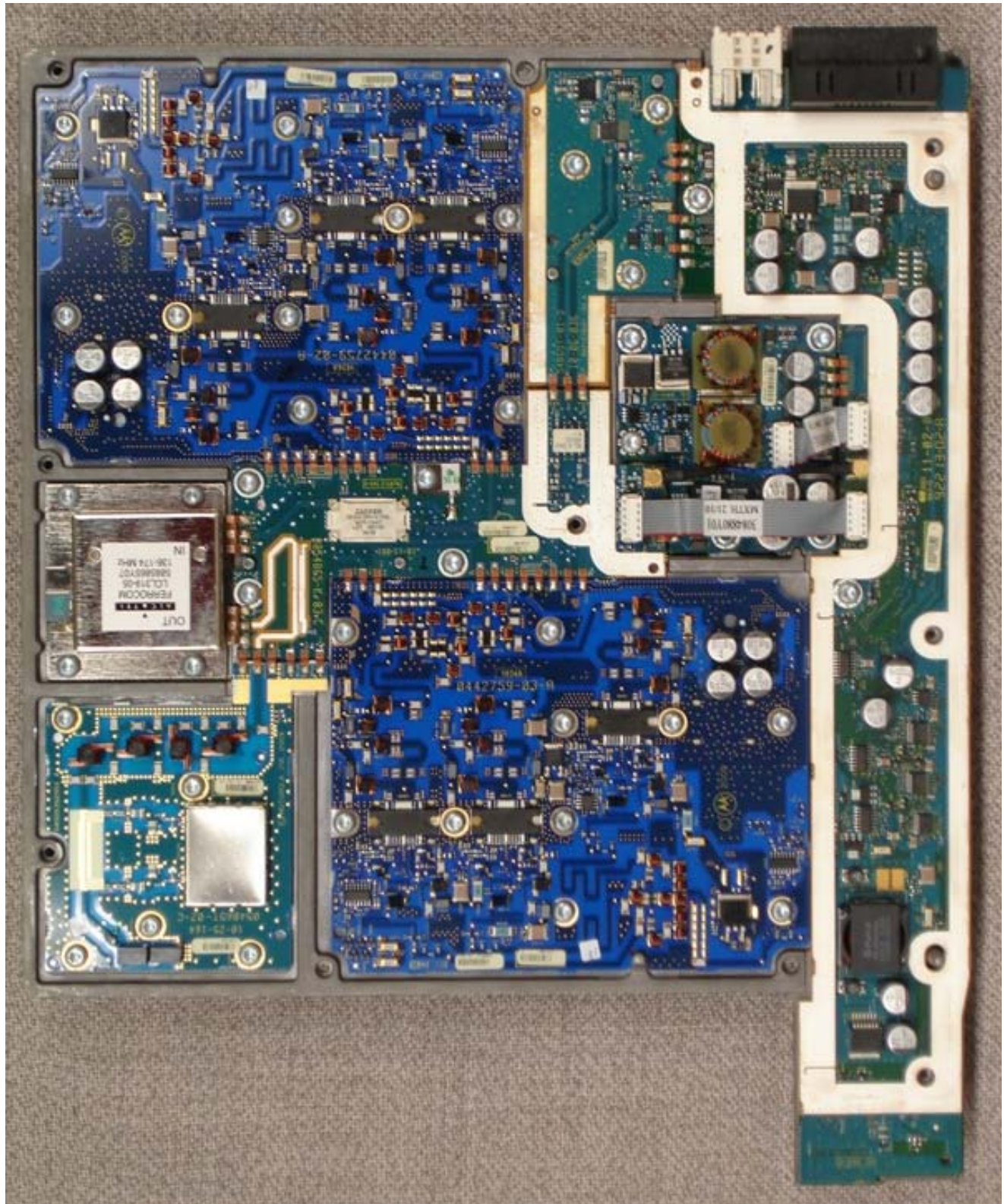
Photographs of the Device

Internal Front View – Transceiver Module, Receiver Section



Photographs of the Device

Internal Front View – Power Amplifier Module, Cover Removed



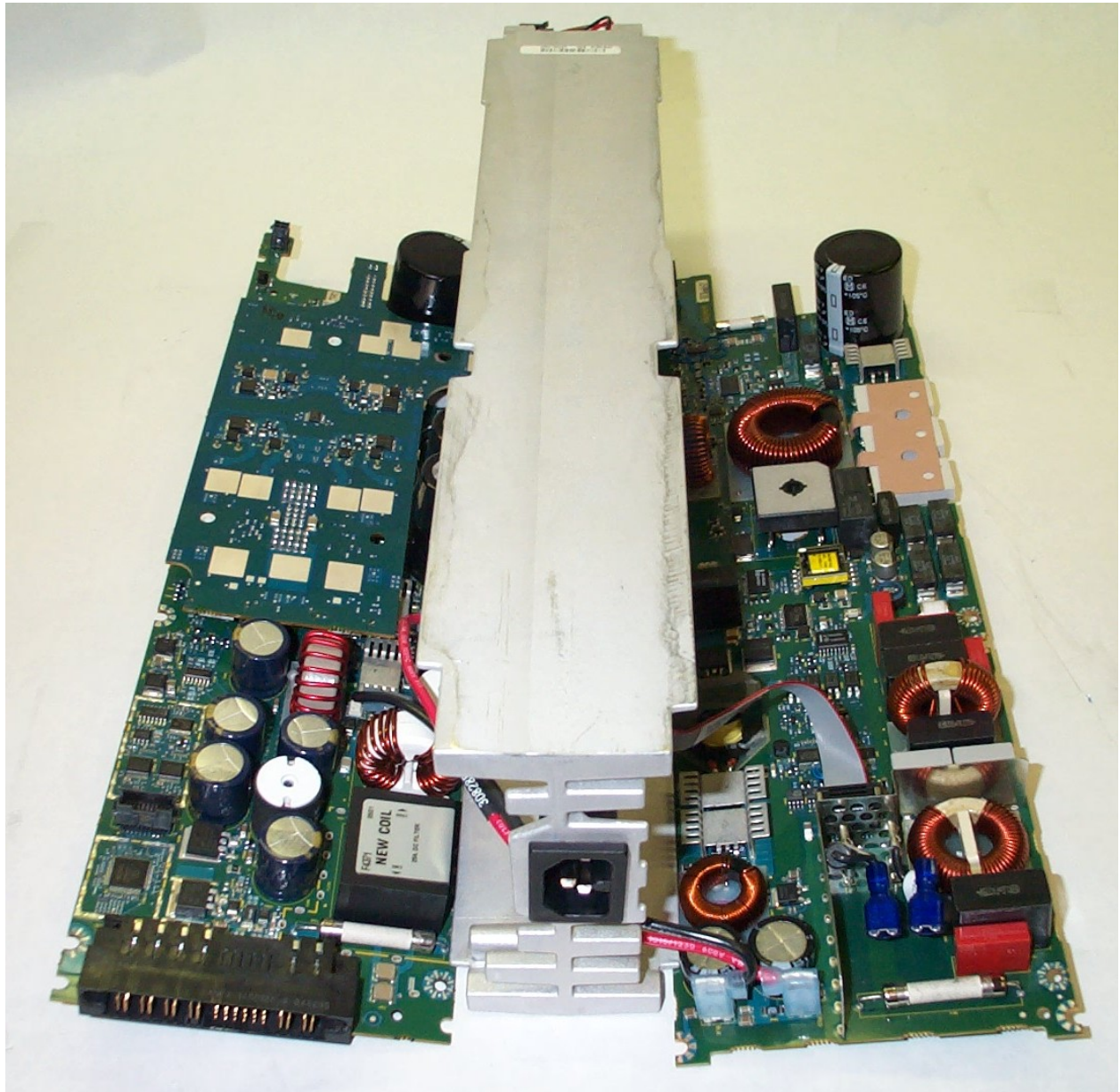
Photographs of the Device

*Internal Front View – Power Supply Module*



Photographs of the Device

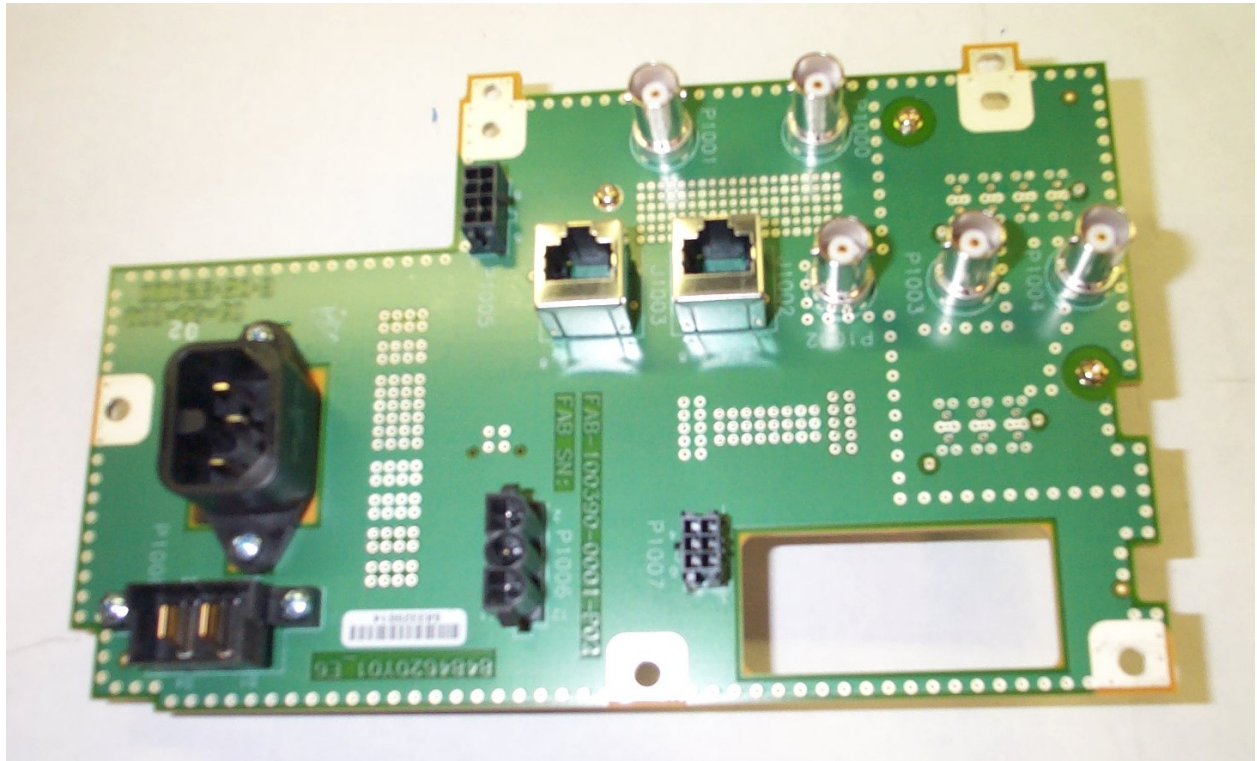
Internal Front View – Power Supply Module, Circuit Boards, Top View





Photographs of the Device

Internal Front View – Backplane



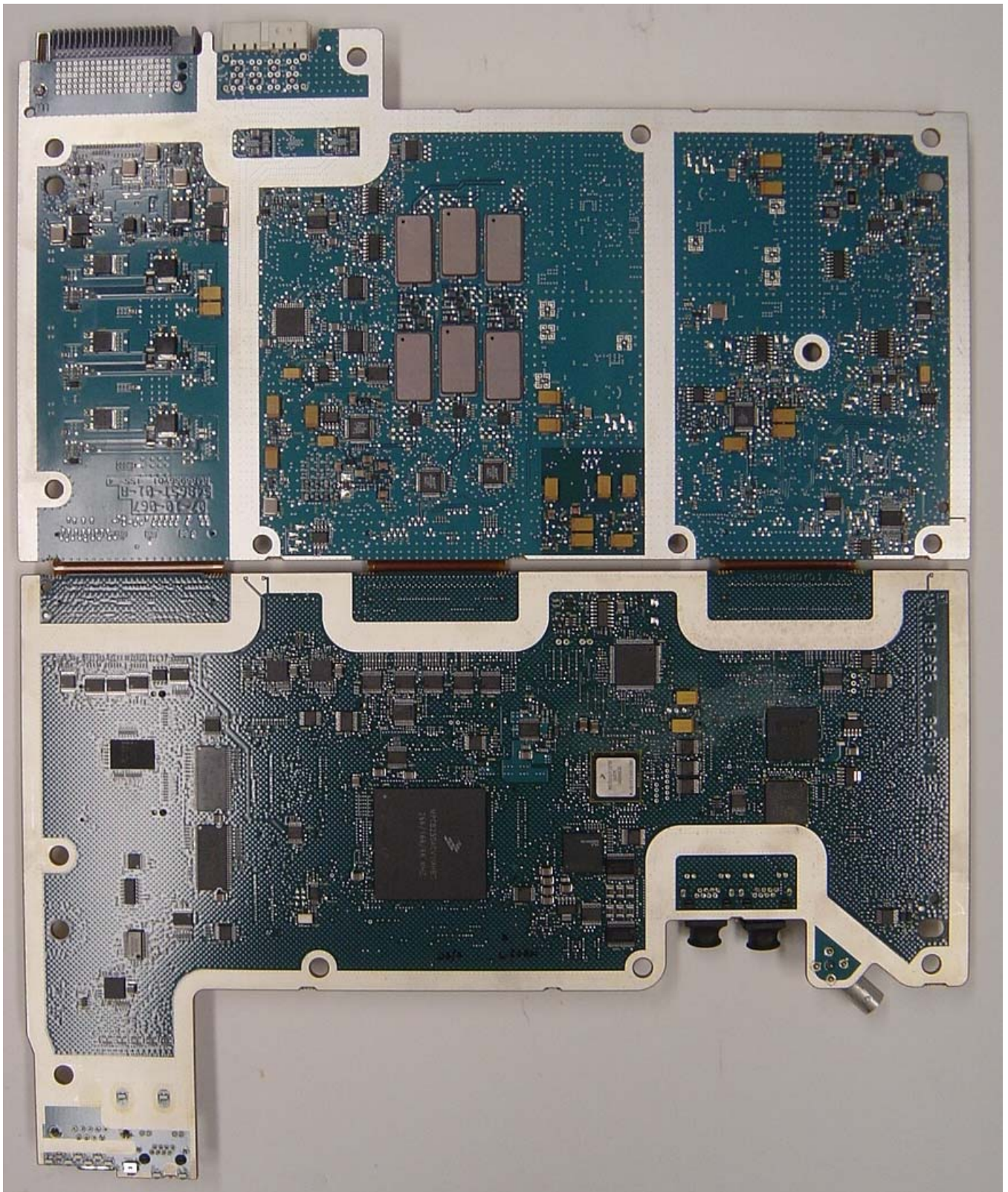
Photographs of the Device

*Internal Front View – Supplementary Audio Card (SAC)*



Photographs of the Device

*Internal Back View – Transceiver Module*



Photographs of the Device

*Internal Back View – Power Amplifier Module*



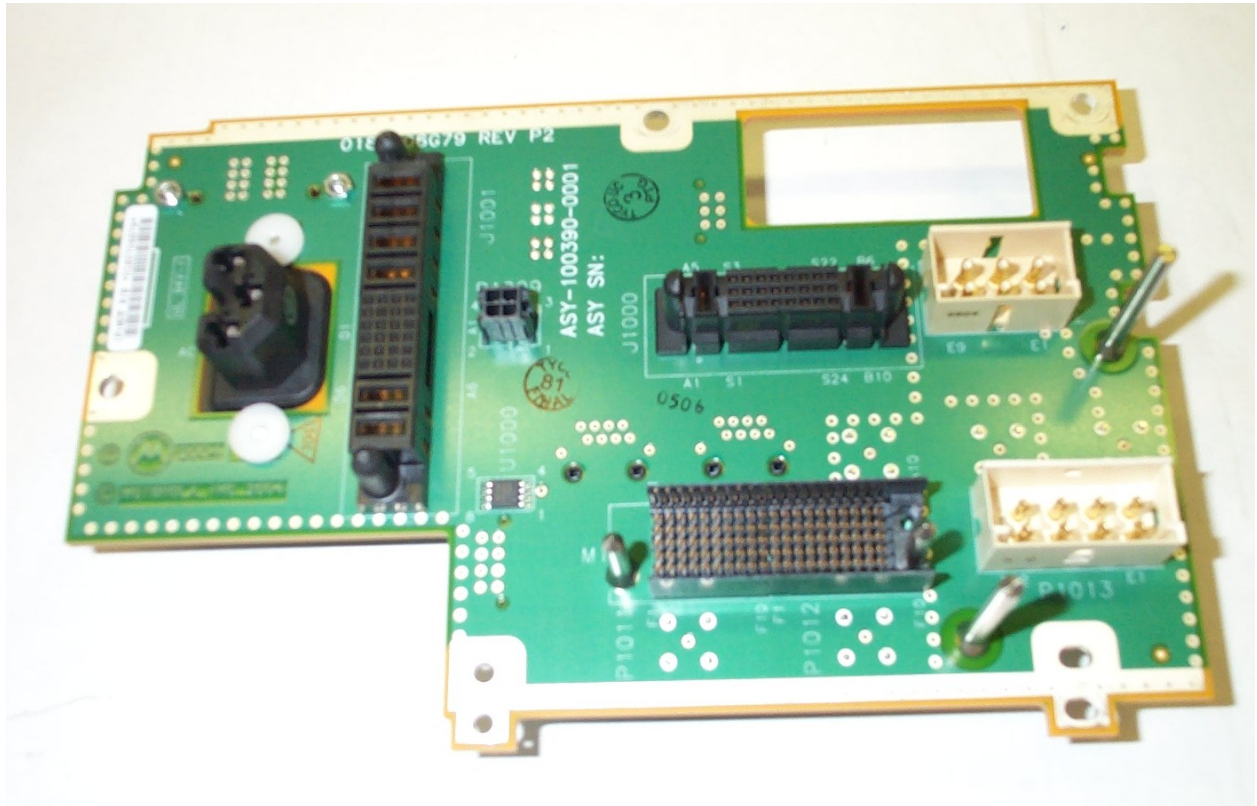
Photographs of the Device

Internal Back View – Power Supply Module, Circuit Boards, Back View



Photographs of the Device

Internal Back View – Backplane



Photographs of the Device

*Internal Back View – Supplementary Audio Card (SAC)*

