

Photographs of the Device

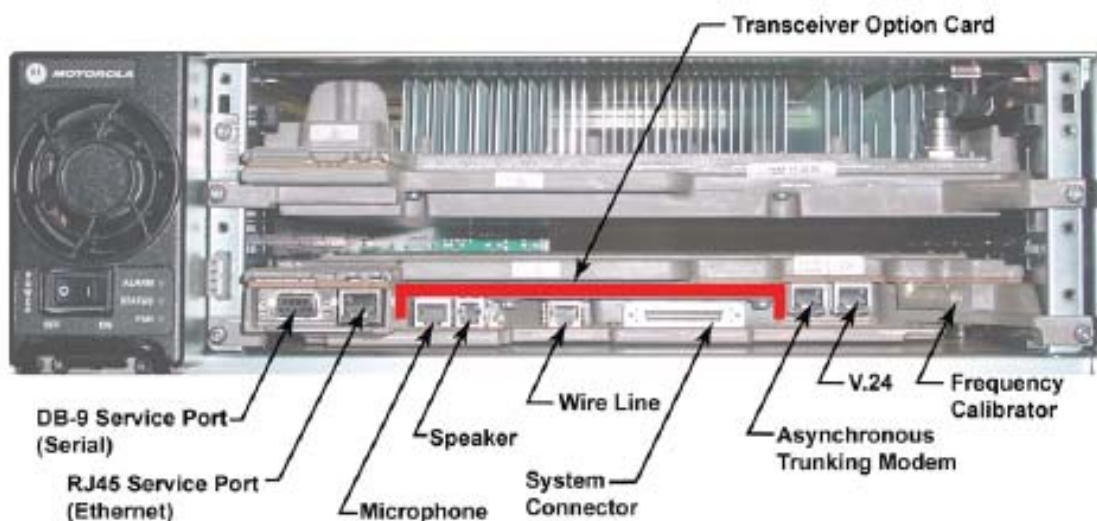
Internal Front View – Transceiver Module



Transceiver Module without the Transceiver Option Card (TOC)



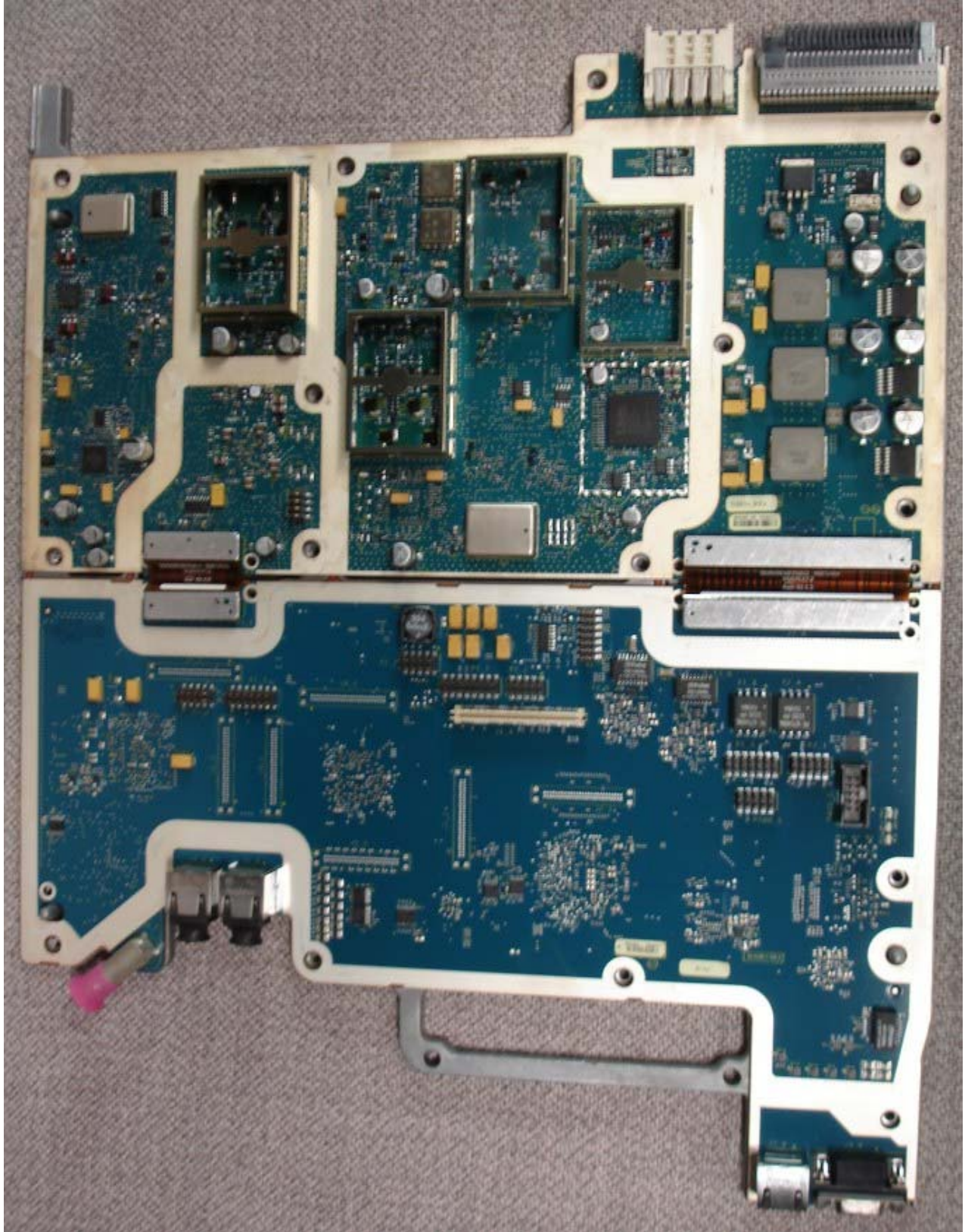
Transceiver Module with the Transceiver Option Card (TOC) Installed



Front View of Base Radio Showing Transceiver Module with TOC Installed and Identifying Connections

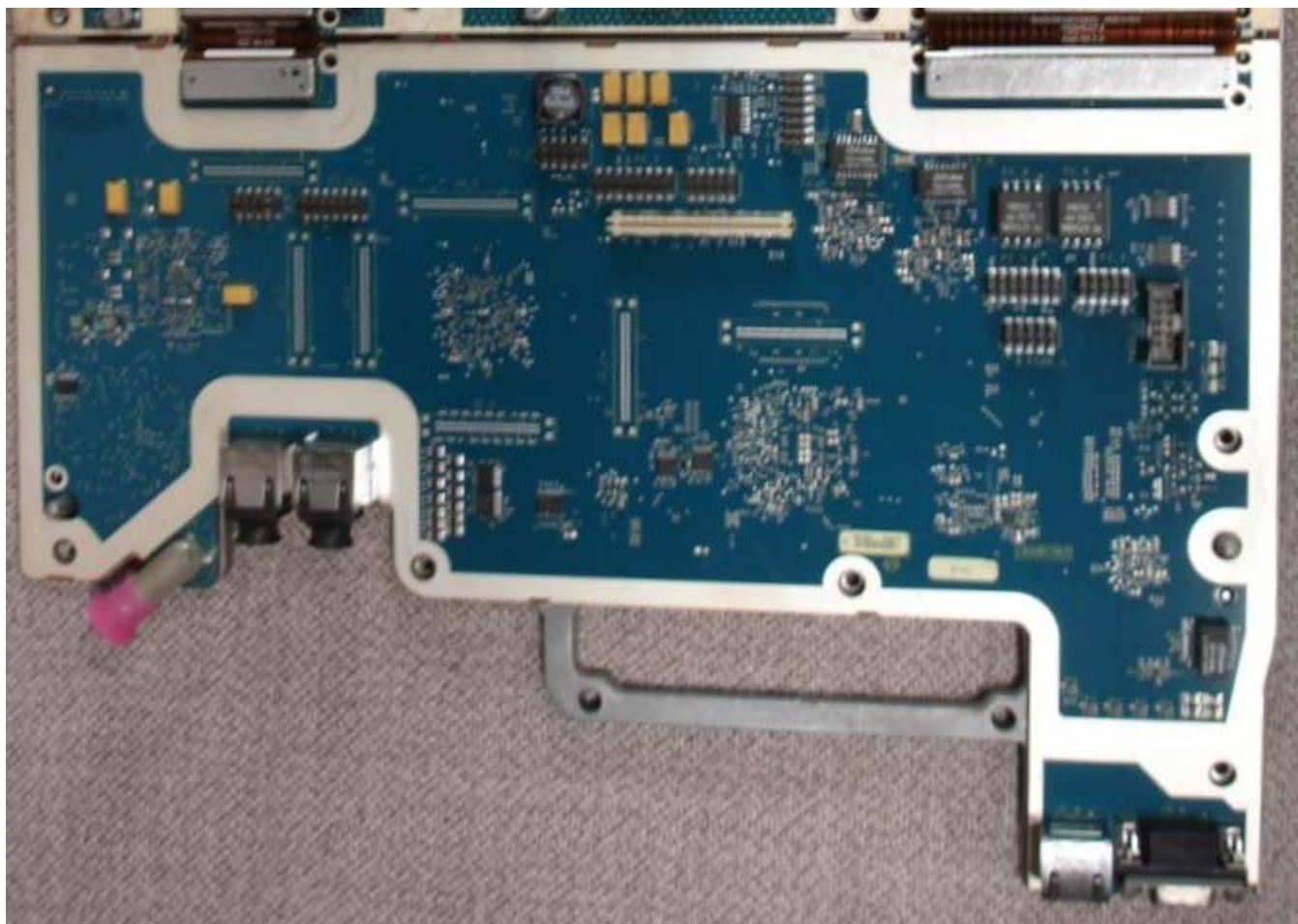
Photographs of the Device

Internal Front View – Transceiver Module Circuit Board Top View



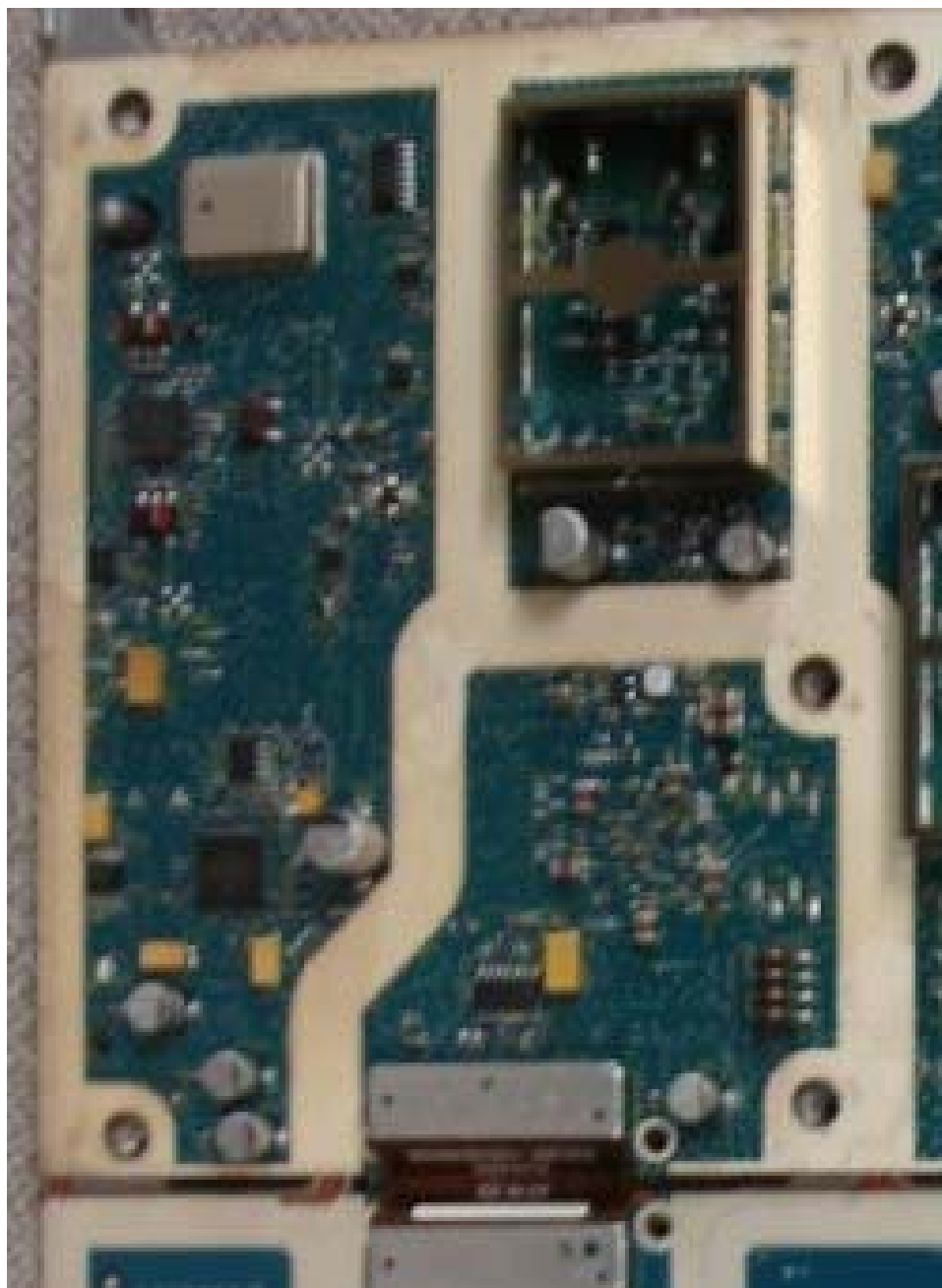
Photographs of the Device

Internal Front View – Transceiver Module, Control Section



Photographs of the Device

Internal Front View – Transceiver Module, Exciter Section



Photographs of the Device

Internal Front View – Transceiver Module, Receiver Section



APPLICANT: MOTOROLA

EQUIPMENT TYPE: ABZ89FC3790B

Photographs of the Device

Internal Front View – Power Amplifier Module, Cover Removed

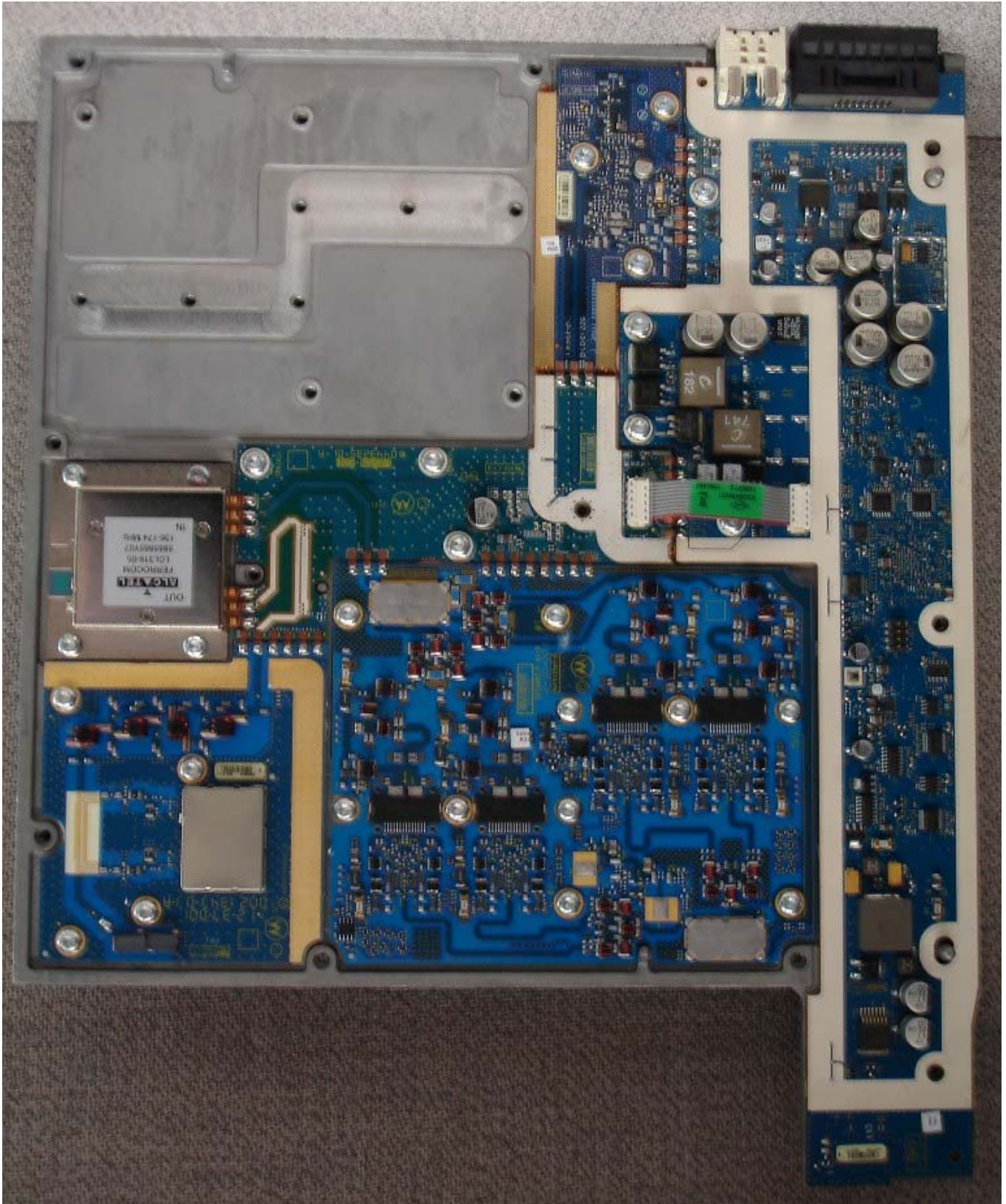


EXHIBIT C3-2

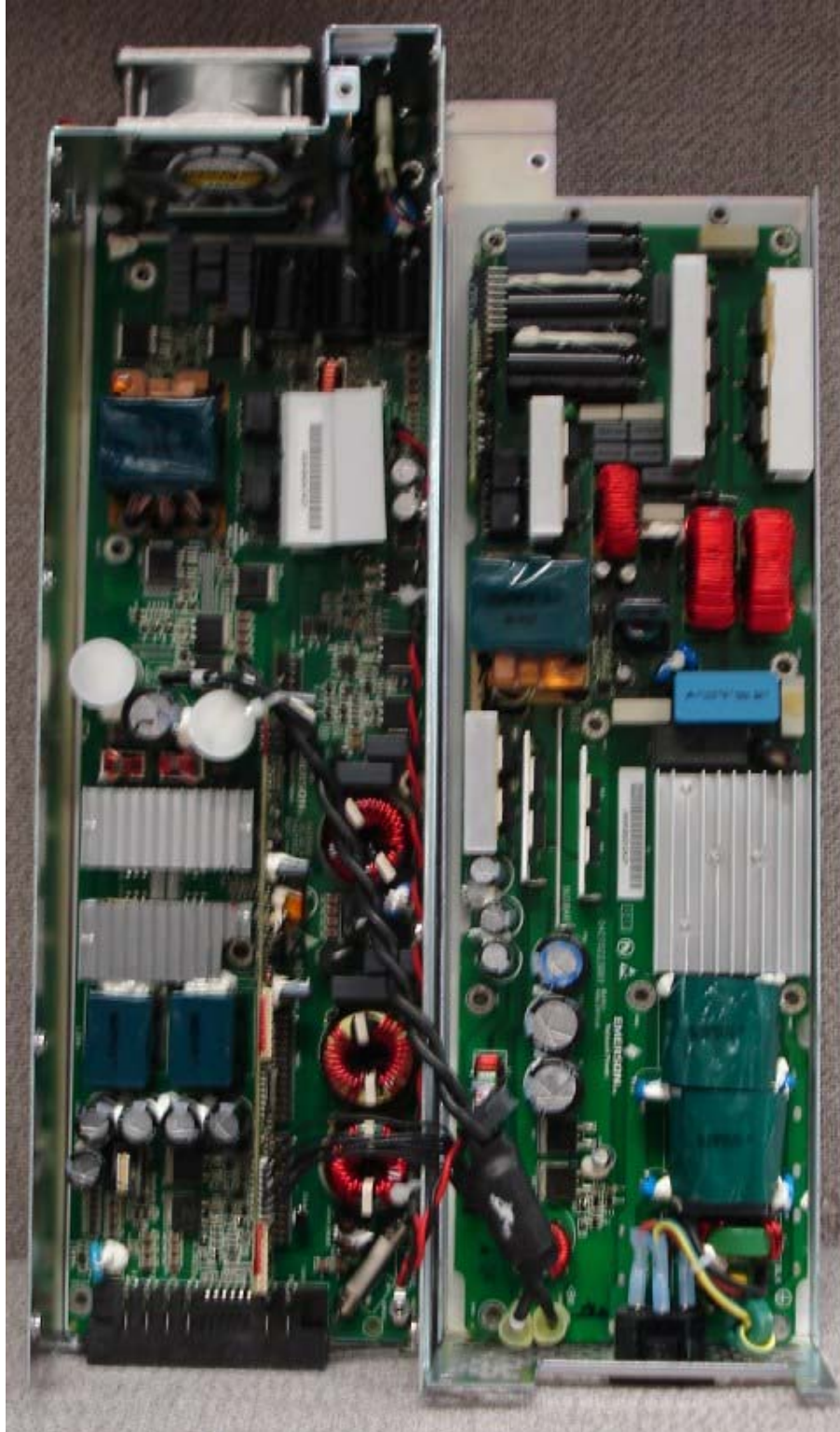
Photographs of the Device

Internal Front View – Power Supply Module



Photographs of the Device

Internal Front View – Power Supply Module, Circuit Boards, Top View

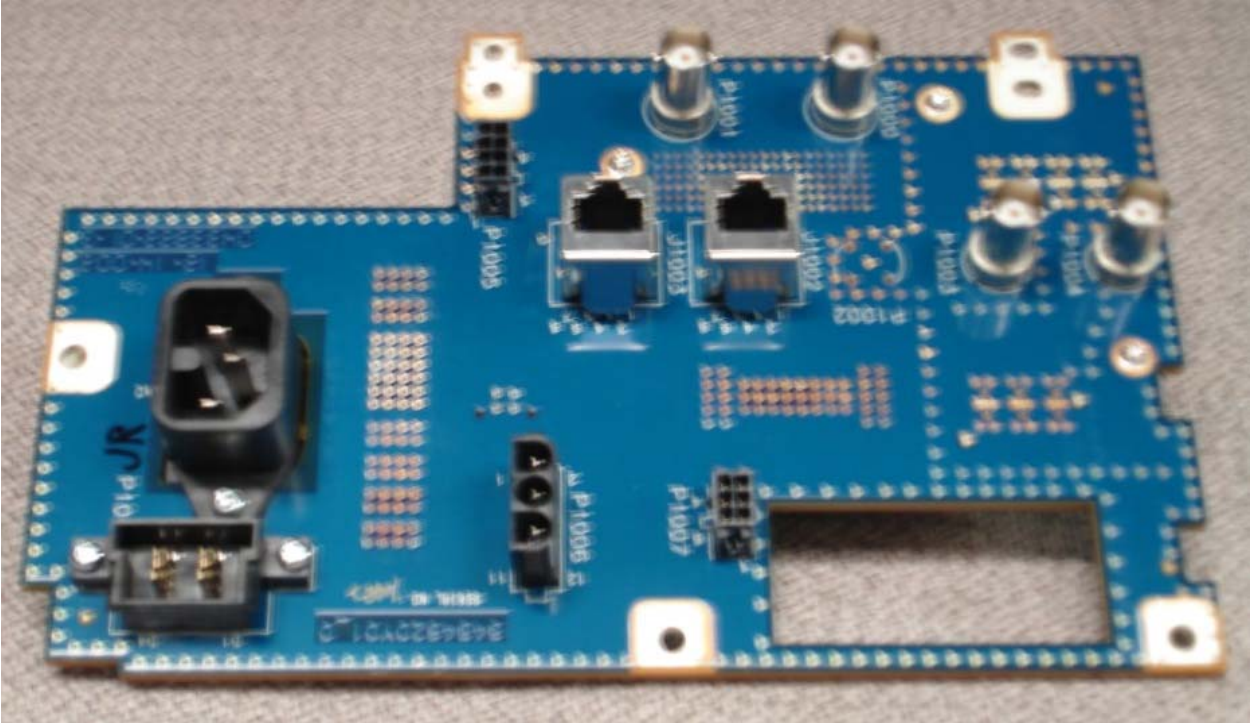


APPLICANT: MOTOROLA

EQUIPMENT TYPE: ABZ89FC3790B

Photographs of the Device

Internal Front View – Backplane



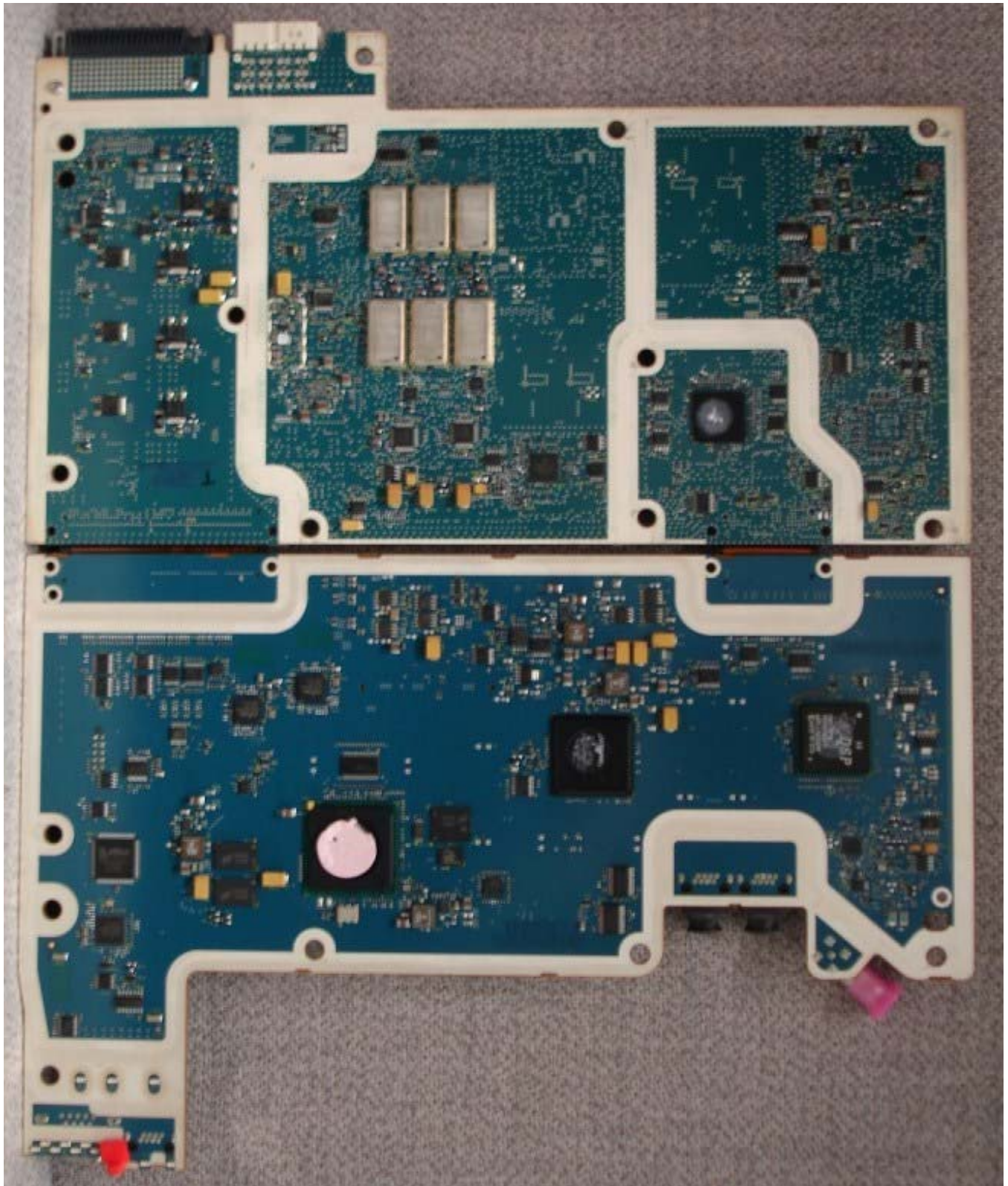
Photographs of the Device

Internal Front View – Transceiver Option Card (TOC)



Photographs of the Device

Internal Back View – Transceiver Module



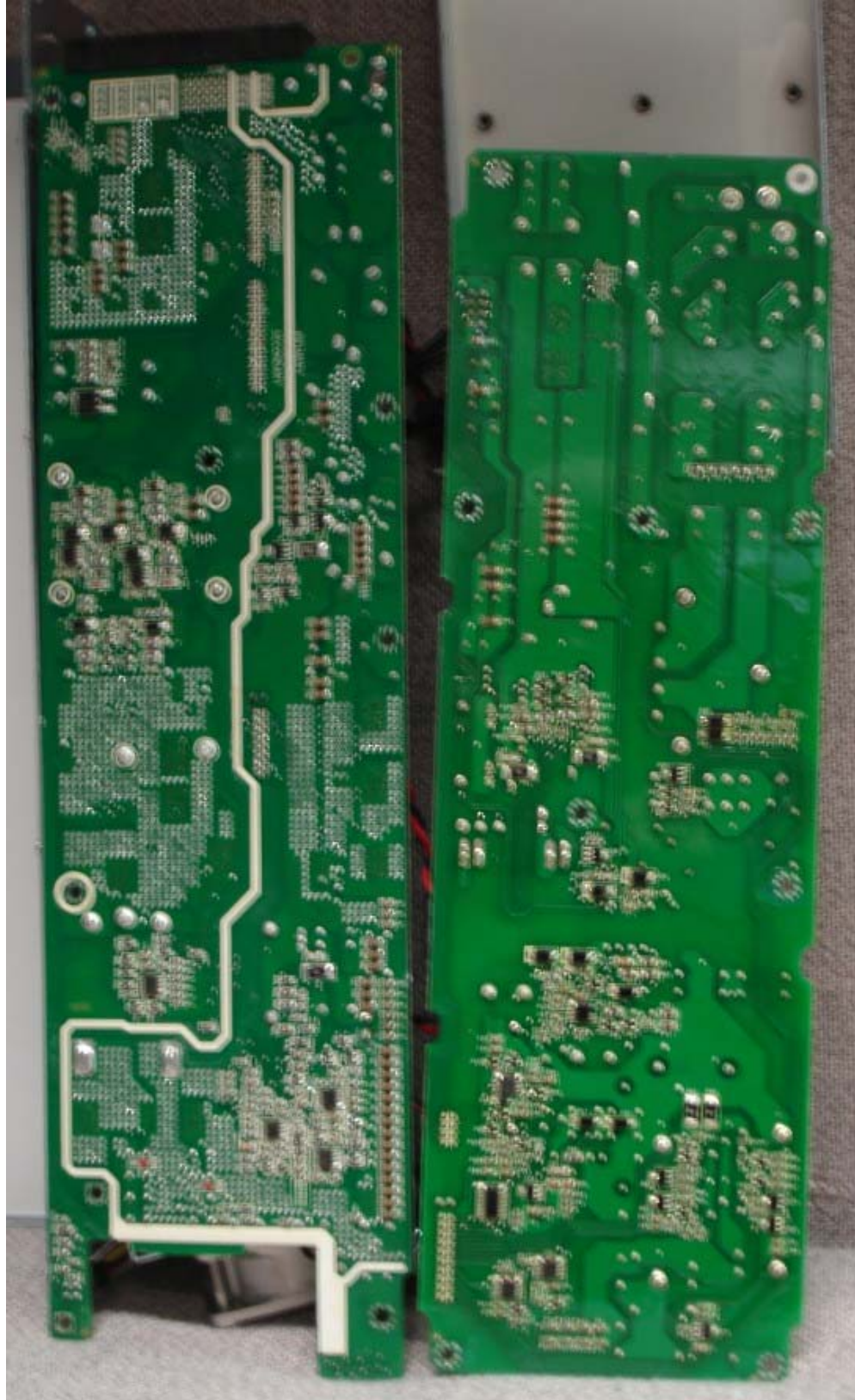
Photographs of the Device

Internal Back View – Power Amplifier Module



Photographs of the Device

Internal Back View – Power Supply Module, Circuit Boards, Back View

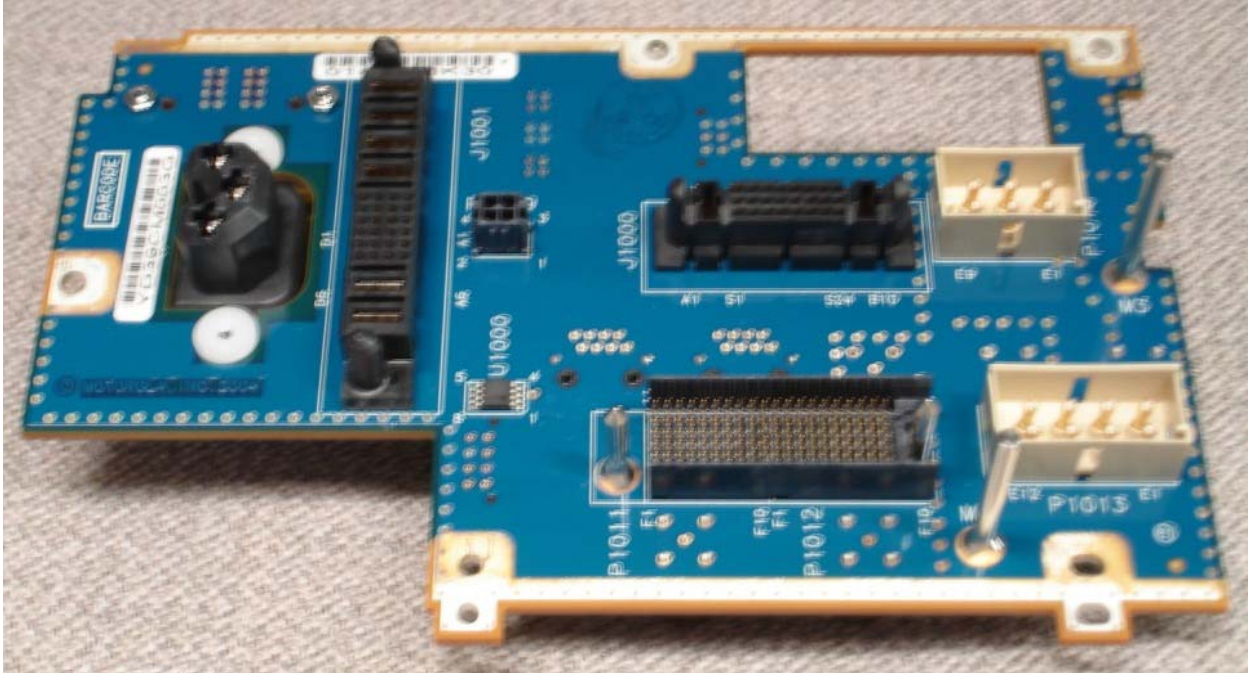


APPLICANT: MOTOROLA

EQUIPMENT TYPE: ABZ89FC3790B

Photographs of the Device

Internal Back View – Backplane



Photographs of the Device

Internal Back View – Transceiver Option Card (TOC)

