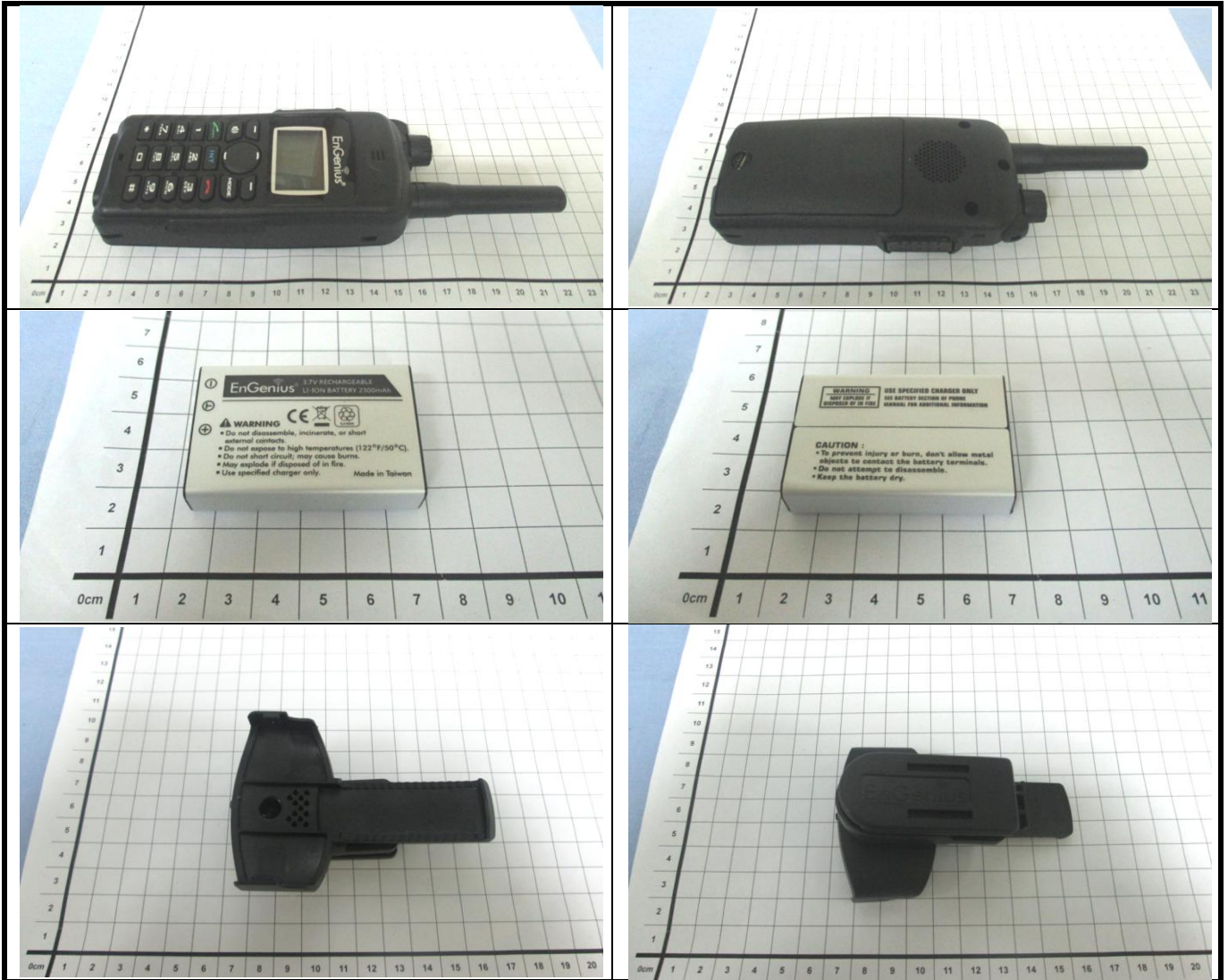


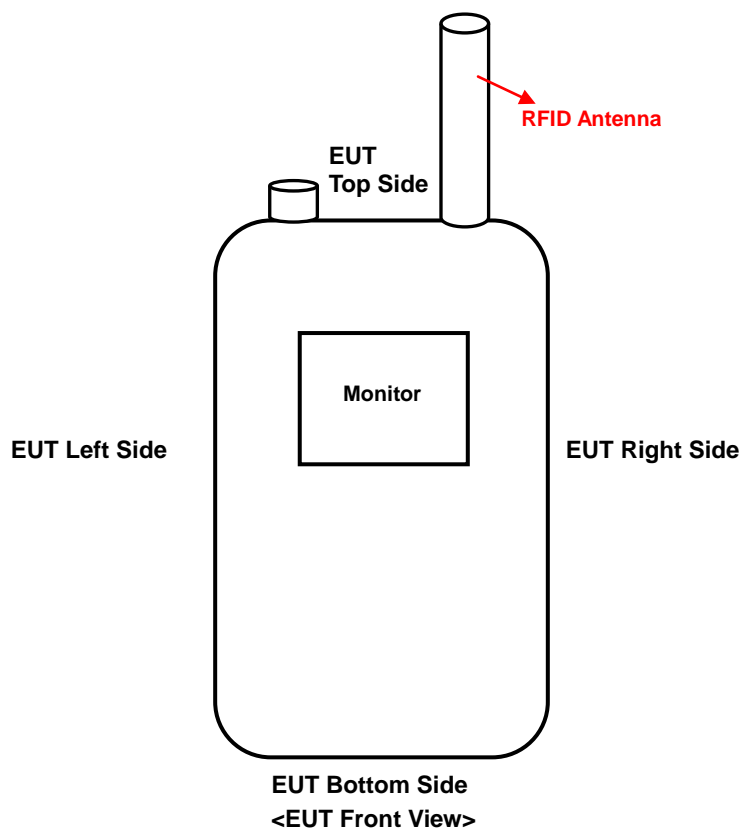
Appendix D. Photographs of EUT and Setup

FCC SAR Test Report

<Photographs of EUT>



<Antenna Location>



The separation distance for antenna to edge:

Antenna	To Top Side (mm)	To Bottom Side (mm)	To Left Side (mm)	To Right Side (mm)
RFID	0	133	37	8

<Photographs of SAR Setup>



Right Cheek



Right Tilted



Left Cheek



Left Tilted

	
<p>Front Face of EUT with 1.5 cm Gap</p>	<p>Rear Face of EUT with 1.5 cm Gap <w/o Belt Clip></p>
	
<p>Rear Face of EUT with 0 cm Gap <w/ Belt Clip></p>	