

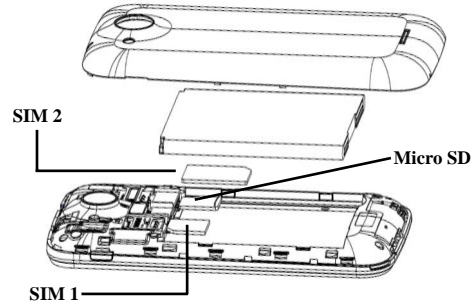
Get started	1
Key and parts	3
Lock and Unlock the screen	4
Make it yours	5
Add Widgets and more icons	6
to Home Screen.....	6
Enter launcher.....	7
Make a call	9
Call log	10
Reject a call by SMS	10
Add a contact	11
Send and Receive message(s)	12
Browser the Web.....	15
Enjoy music.....	16
Download applications.....	17
From android market	17
Manage Applications	18
Important Safety Information	19

Insert SIM card

The phone is a Dual SIM mobile phone allowing you to use two different carriers.

To insert SIM card(s):

1. Turn off the mobile phone and remove the rear cover and battery.
2. Insert the SIM card correctly in the card slot(s) (See figure below)



3. Finally insert the battery and replace the rear cover of the mobile phone.

Insert Memory card

1. Turn off the mobile phone and remove the rear cover and battery.

2. Insert the Micro SD card into the slot.

3. Finally insert the battery and the rear cover of the mobile phone.

Note: Use only compatible memory cards for this device. Incompatible memory cards may damage the card or the device and corrupt the data stored in the card.

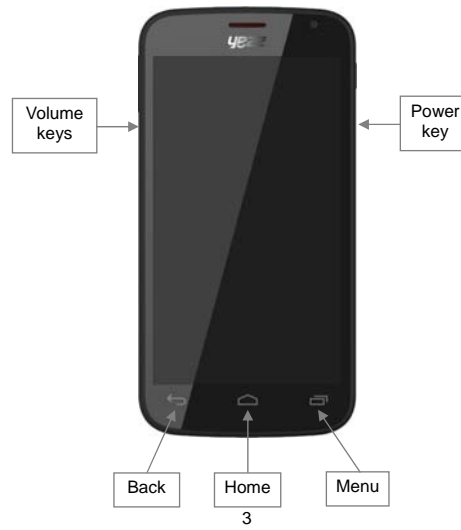
Charge the Battery or Connect to a computer

You can charge your battery using the charger or connect the USB cable (supplied with this phone) to the computer.

Note: Please use the specific battery, otherwise it may cause explosion.

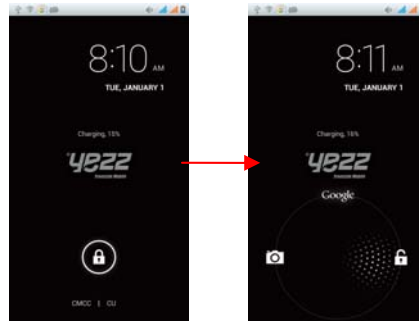
Key and parts

The smart phone gives you a great experience on Camera, Video recorder, FM radio, Music and Sound recorder. Let you install various APPs, games, and more (supports APK format) by downloading it from Google Play Store.



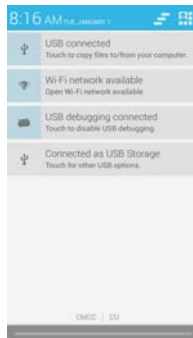
Lock and Unlock the screen

Press power button to enter Sleep mode and meanwhile the screen will be locked; press power button again to turn on the mobile phone and then drag the icon to the right side to unlock the screen.



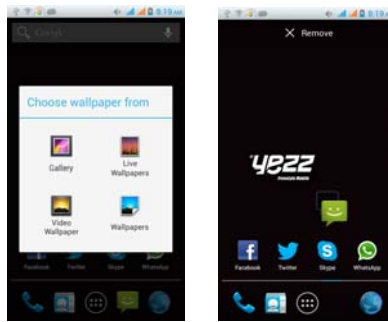
1. Home screen: It is your starting point to access all the features on your phone. It displays application icons, widgets, shortcuts, and other features. Press and hold home screen to modify wallpaper.

2. Notification Bar: At the top of the screen, the Status Bar displays the time, status, and notifications. If there is a new message, missed call or any new notification, you can drag it down to open the notification panel and click the desired one to look at it. When you finished, you can close it by dragging the panel up or pressing "Back".



Add Widgets and more icons to Home Screen

Press and hold Home Screen to modify wallpaper, or enter Launcher and press and hold an application till the screen vibrates, and then release your finger.

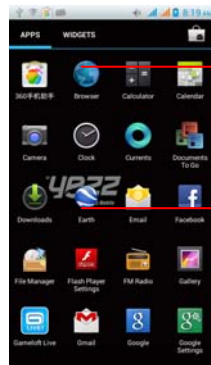


Press and hold the widget or icon you want to move. Once the phone vibrates, don't release your hold on the icon. Drag the widget or icon to a new location on the screen. Press and hold on an icon till the phone vibrates, and drag the widgets or icon to the trash to remove!

Open and Switch Applications

At idle screen touch  enter launcher.

The Launcher holds icons for all of the applications on your phone, including any application that you downloaded from Android Market or other sources



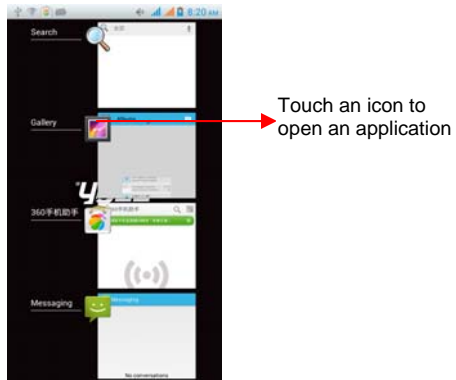
Slide the Launcher
left or right to bring
more icons

Touch an application
to open it


Press Home icon or Back icon to close the Launcher.

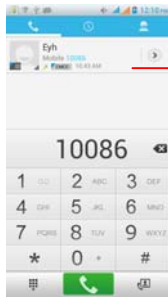
Switch to Recently Used Application

Press home key and hold the icon for a few seconds.





Make a call

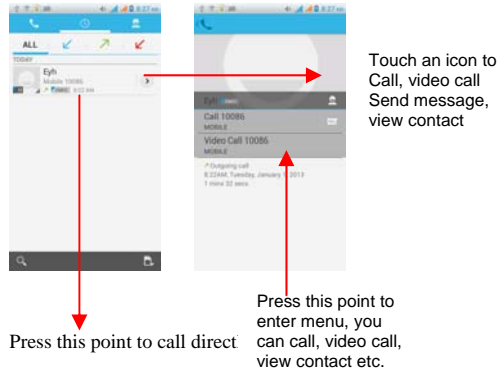
Choose  and enter a complete phone number to make a call. Your phone supports smart search.



Touch to view 2 more contacts with digit number "10086".

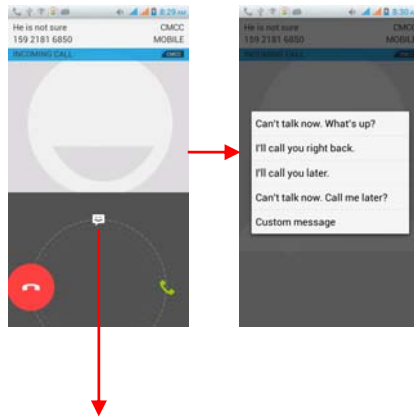
Touch  to view call log, touch  to enter phonebook

Call log



Reject a call by SMS


While there is an incoming call, and you are not able to accept the call, therefore you can send a message for rejecting the call.

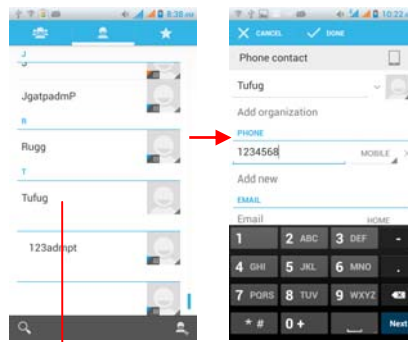


Drag this icon to select and send a SMS




Touch  enter contact.

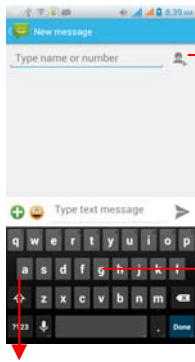
Touch  to add new contact.



Click here for a contact and press menu key to enter menu view, edit, delete contact, print contact, share contact, associate SIM card.

Send and Receive message(s)

Touch  enter messaging, touch compose new message




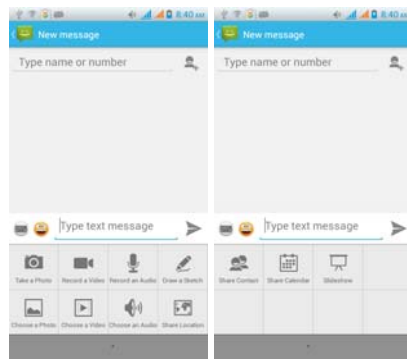
Tap this icon to select desired contact from phonebook.

Press space or a punctuation mark to enter the highlighted suggestion.

Touch once to capitalize the next letter you type. Touch and hold for caps.

When you are composing a new text message, you can select text to cut or copy. The selected text is highlighted in blue.

Tap  to add an attachment, including Pictures, Videos, Audios, to be send as a MMS.

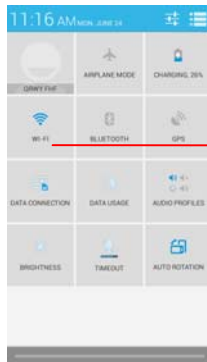


When a new message comes, you can read it by dragging the notification panel and clicking the message, or entering to Message to read it directly.
 Long press one of the all message thread, you can delete thread".

a. Set up Internet/Data connection

Enter Settings > More..., scroll down to find out Mobile network, and then enter "Access Points Names", choose the desired WAP account.

b. Switch on Data connection or WiFi

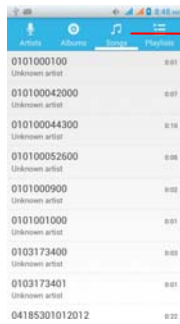


Touch the icon in the notifications bar to switch on or off Data connection

To browse the web, you need to switch on Data connection. If there is WiFi around, you can switch on WiFi to browse the web.

Enjoy music

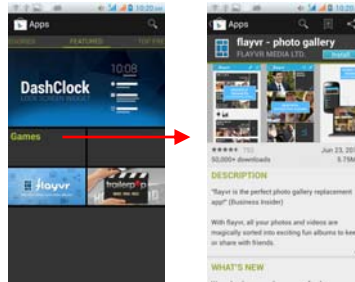
When you copy music to your SD card, the Music player searches the card for music files and builds a catalog of your music, based on information about each file that is stored in the file itself.



Touch a tab to view your library in one of four ways

Download applications from Google Play Store

1. Add Google account
2. Enter Play Store (Android Market) and download apps

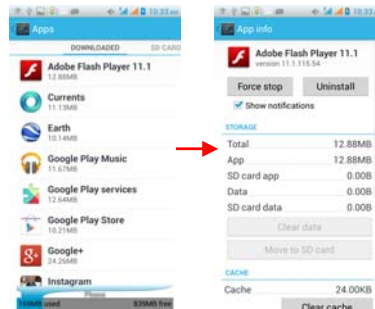


Manage Applications

Enter Setting > App.

As you install downloaded Apps, you need to switch on "Unknown sources" in application settings.

Select one app, you can uninstall, clear data, move to phone/sd card



Important Safety Information

Access Codes

PIN code

The Personal Identification Number (PIN code) protects your SIM card against unauthorized use. Your SIM card usually supplies the PIN code. The password can be obtained from your service provider. If the incorrect PIN code occurred three times in succession, you may need to key in PUK code.

PUK code

The Personal Unlocking Key (PUK code) is required to change a blocked PIN code. The PUK2 code is required to change a blocked PIN2 code. The password can be obtained from your service provider. If you key in an incorrect PIN2 code three times in succession, you may need to key in the PUK2 code. If an incorrect PUK or PUK2 code is used, the SIM card cannot be used anymore and you might need to contact your service provider for a new card.

Radio frequency energy

Your mobile phone is a radio transmitter and receiver. When the phone is turned on, it receives and transmits radio frequency (RF) energy. Depending on the type of mobile phone you possess, it operates on different frequency ranges and employs commonly used modulation techniques. The system handles your call when you are using your phone and it also controls the power level at which your phone transmits.

Specific Absorption Rate (SAR) information.

Your phone has been designed to comply with applicable safety requirements for exposure to radio waves. These requirements are based on scientific organizations through periodic and thorough evaluation of scientific studies. These guidelines include safety margins designed to assure the safety of all persons, regardless of age and health.

- The radio wave exposure guidelines employ a unit of measurement known as the Specific Absorption Rate, or SAR. Tests for SAR are conducted by using standardized method with the phone transmitting at its highest certified power level in all used frequency bands.
- This phone is designed to meet the relevant guidelines for exposure to radio waves.
- The SAR limit recommended by the international Commission on Non-Ionizing Radiation Protection (ICNIRP) is 2W/kg averaged over ten (10) grams of tissue.

SAR data information for residents in countries/regions that have adopted the SAR limit recommended by the Institute of Electrical and Electronics Engineers (IEEE) is 1.6 W/kg averaged over one (1) gram of tissue.

Electronic devices

Most modern electronic equipment is shielded from RF energy. However, certain electronic equipment may not be shielded against the RF signals from your wireless phone, therefore:

- Do not use your mobile phone near medical equipment without requesting permission.

Pacemaker

Mobile phones may affect the operation of some implanted cardiac pacemakers and other medically implanted equipments. Pacemaker manufacturers recommend that a minimum separation of 20 cm. (6 inches) should be maintained between a hand-held wireless phone and a pacemaker to avoid potential interference with the pacemaker. These recommendations are consistent with independent research by the Wireless Technology Research Association.

Persons with pacemakers

- Should always keep the phone more than 20 cm. (6 inches) from their pacemakers when the phone is switched on
- Should not carry the phone in a breast pocket.
- Should use the ear opposite to the pacemaker to minimize the potential for interference.
- If you have any reason to suspect that interference is taking place, switch off your phone immediately

Hearing aids

- Some hearing aids might be disturbed by mobile phones. In the event of such disturbance, you may want to consult your service provider, or call the customer service line to discuss alternatives.

Aircraft

- Turn off your mobile phone before boarding any aircraft.
- Do not use it on the ground without crew permission. To prevent interference with communication systems, you must not use your mobile phone while the plane is in the air.

Potentially explosive atmospheres

Switch off your phone when in any area with a potentially explosive atmosphere and obey all signs and instructions. It is rare, but your phone or its accessories could generate sparks. Sparks in such areas could cause an explosion or fire resulting in bodily injury or even death. Areas with a potentially explosive atmosphere are often, but not always, clearly marked. They include fuelling areas, such as petrol station, below deck on boats, fuel or chemical transfer or storage facilities, and areas where the air contains chemicals or particles, such as grain, dust, or metal powders, and any other area where you would normally be advised to turn off your vehicle engine.

Driving

Check the laws and regulations on the use of mobile phones in the areas where you drive. If you are going to use your phone while driving, please:

- Give full attention to driving.
- Use the **"handsfree"** setting. (Required by law in many countries).
- Pull off the road and park before making or answering a call if driving conditions so require.

RF energy may affect some electronic systems in motor vehicles such as the car stereo, safety equipment etc .In addition, some vehicle manufacturers do not allow use of mobile phones, unless the installation is supported by a handsfree kit with an external antenna in their vehicles.

Check with your vehicle manufacturer's representative to be sure that your mobile phone will not affect the electronic systems.

Emergency calls

Important:

This phone, like any wireless phone, operates using radio signals, wireless and landline networks as well as user programmed functions. Because of this connections in all conditions cannot be guaranteed. Therefore, you should never rely solely upon any wireless phone for essential communications (e.g. medical emergencies).

Emergency calls may not be possible on all wireless phone networks or when certain network services and/or phone features are in

FCC Caution.

§ 15.19 Labelling requirements.

This device complies with part 15 of the FCC Rules. Operation is subject to the following two conditions: (1) This device may not cause harmful interference, and (2) this device must accept any interference received, including interference that may cause undesired operation.

§ 15.21 Information to user.

Any Changes or modifications not expressly approved by the party responsible for compliance could void the user's authority to operate the equipment.

§ 15.105 Information to the user.

Note: This equipment has been tested and found to comply with the limits for a Class B digital device, pursuant to part 15 of the FCC

Rules. These limits are designed to provide reasonable protection against harmful interference in a residential installation. This equipment generates uses and can radiate radio frequency energy and, if not installed and used in accordance with the instructions, may cause harmful interference to radio communications. However, there is no guarantee that interference will not occur in a particular installation. If this equipment does cause harmful interference to radio or television reception, which can be determined by turning the equipment off and on, the user is encouraged to try to correct the interference by one or more of the following measures:

- Reorient or relocate the receiving antenna.
- Increase the separation between the equipment and receiver.
- Connect the equipment into an outlet on a circuit different from that to which the receiver is connected.
- Consult the dealer or an experienced radio/TV technician for help.

Specific Absorption Rate (SAR) information:

This GSM Mobile Phone meets the government's requirements for exposure to radio waves. The guidelines are based on standards that were developed by independent scientific organizations through periodic and thorough evaluation of scientific studies. The standards include a substantial safety margin designed to assure the safety of all persons regardless of age or health.

FCC RF Exposure Information and Statement The SAR limit of USA (FCC) is 1.6 W/kg averaged over one gram of tissue. Device types: A5 (A4JANDYA5) has also been tested against this SAR limit. The highest SAR value reported under this standard during product certification for use at the ear is 0.47W/kg and when properly worn on the body is 0.89W/kg. This device was tested for typical body-worn operations with the back of the handset kept **1.5cm** from the body. To maintain compliance with FCC RF exposure requirements, use accessories that maintain a **1.5cm** separation distance between the user's body and the back of the

handset. The use of belt clips, holsters and similar accessories should not contain metallic components in its assembly. The use of accessories that do not satisfy these requirements may not comply with FCC RF exposure requirements, and should be avoided.

Body-worn Operation

This device was tested for typical body-worn operations. To comply with RF exposure requirements, a minimum separation distance of **1.5 cm** must be maintained between the user's body and the handset, including the antenna. Third-party belt-clips, holsters, and similar accessories used by this device should not contain any metallic components. Body-worn accessories that do not meet these requirements may not comply with RF exposure requirements and should be avoided. Use only the supplied or an approved antenna.