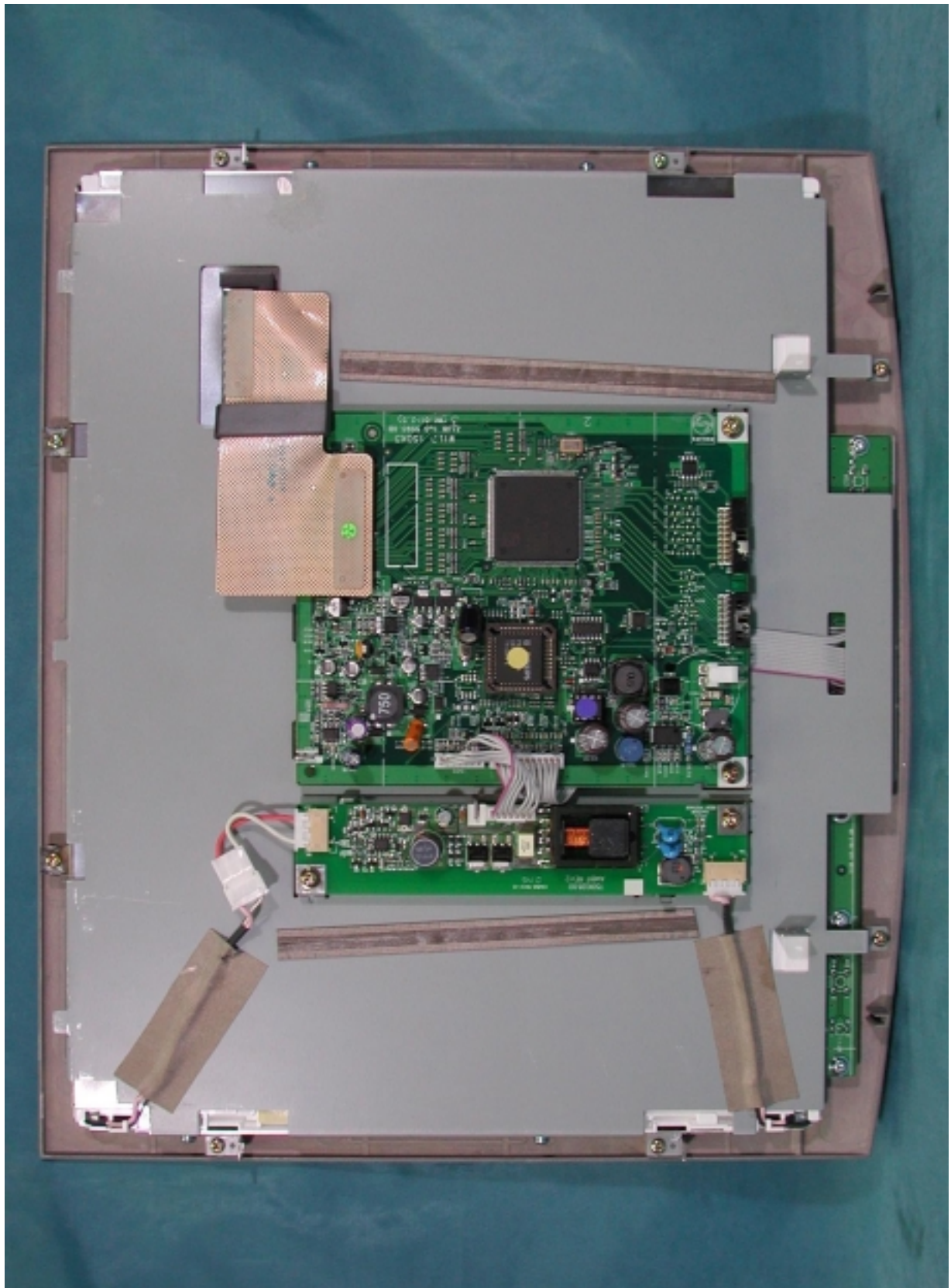


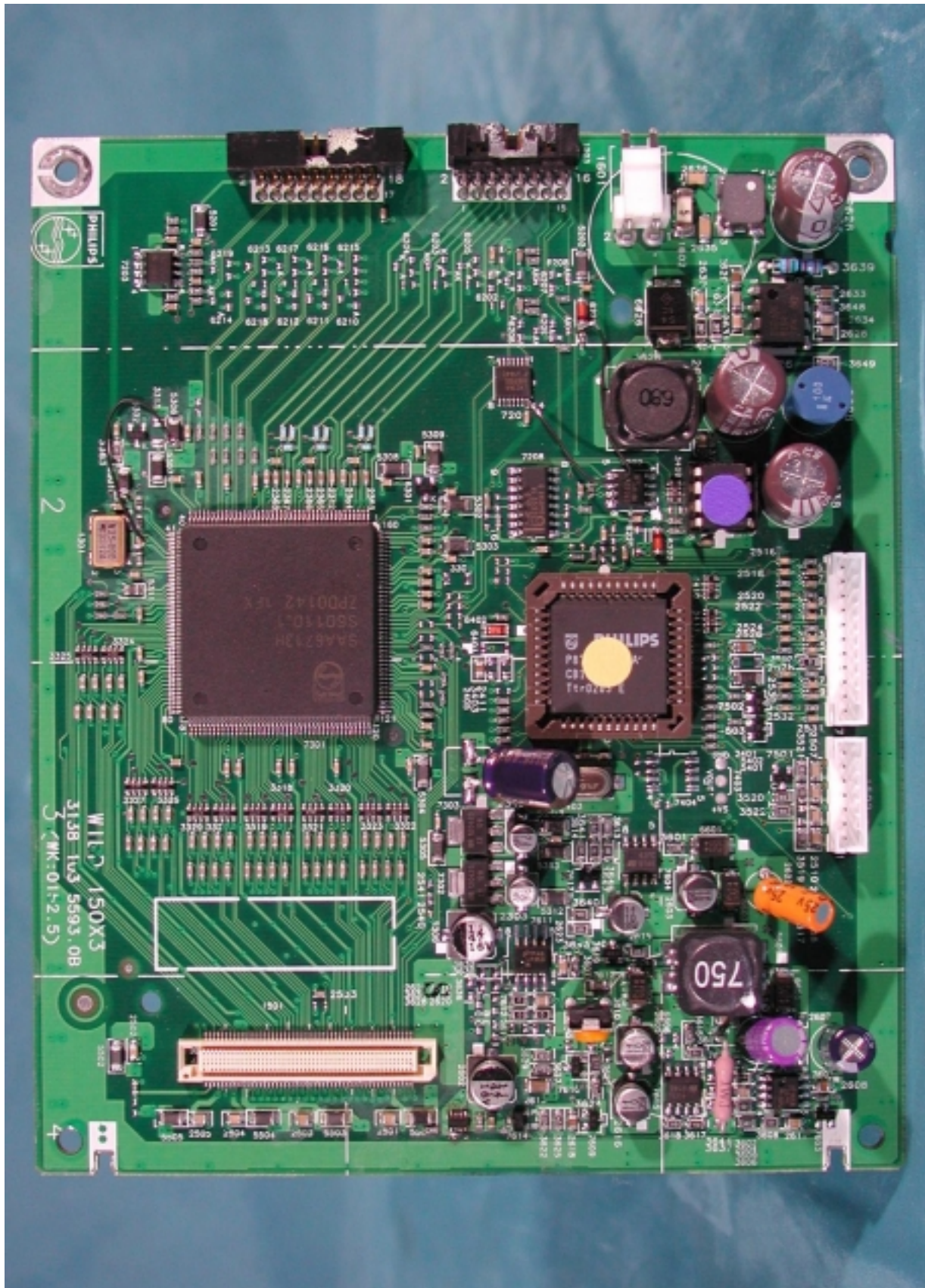
Assembly w/o Base Cover



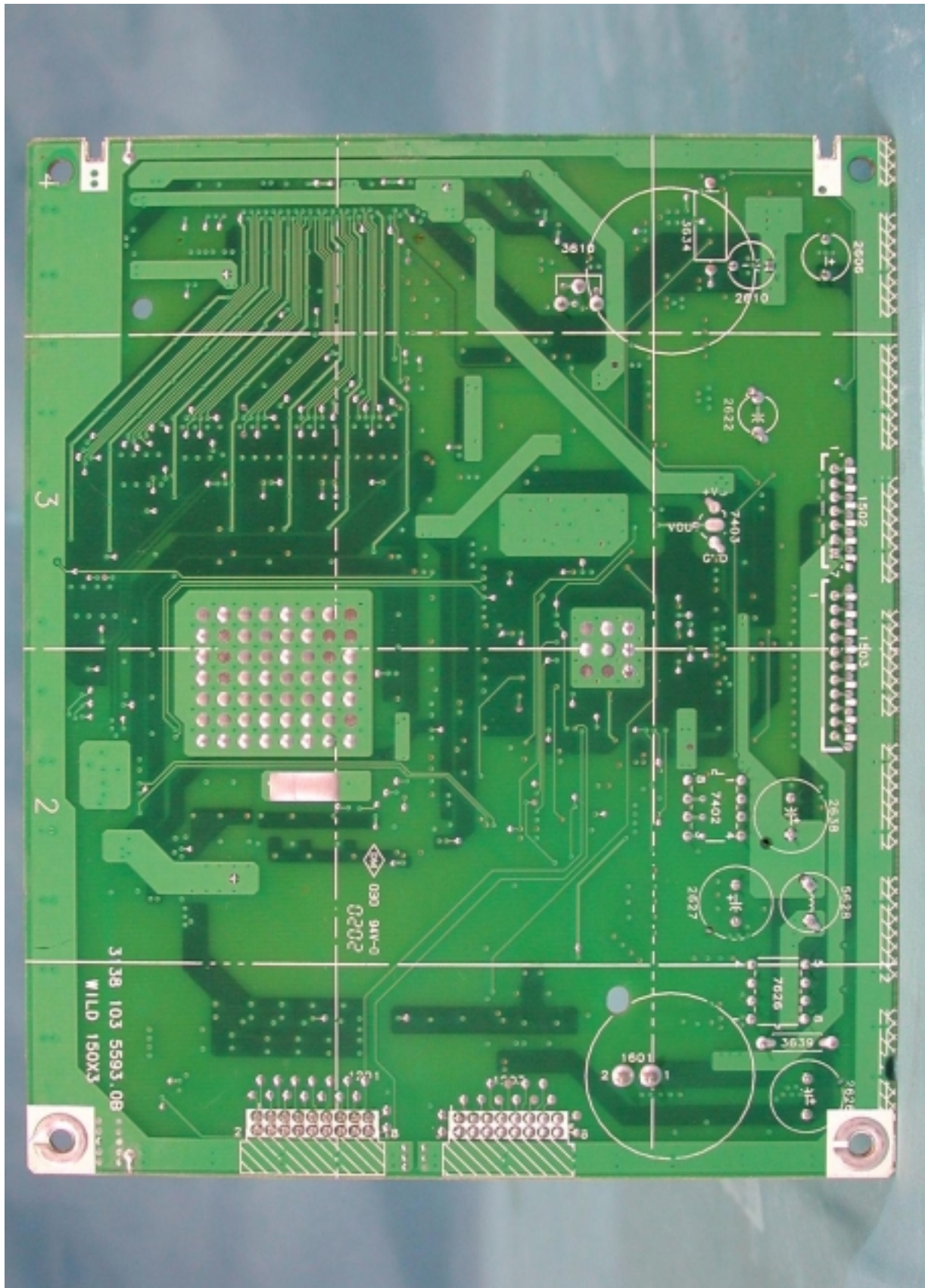
Assembly w/o Back Cover



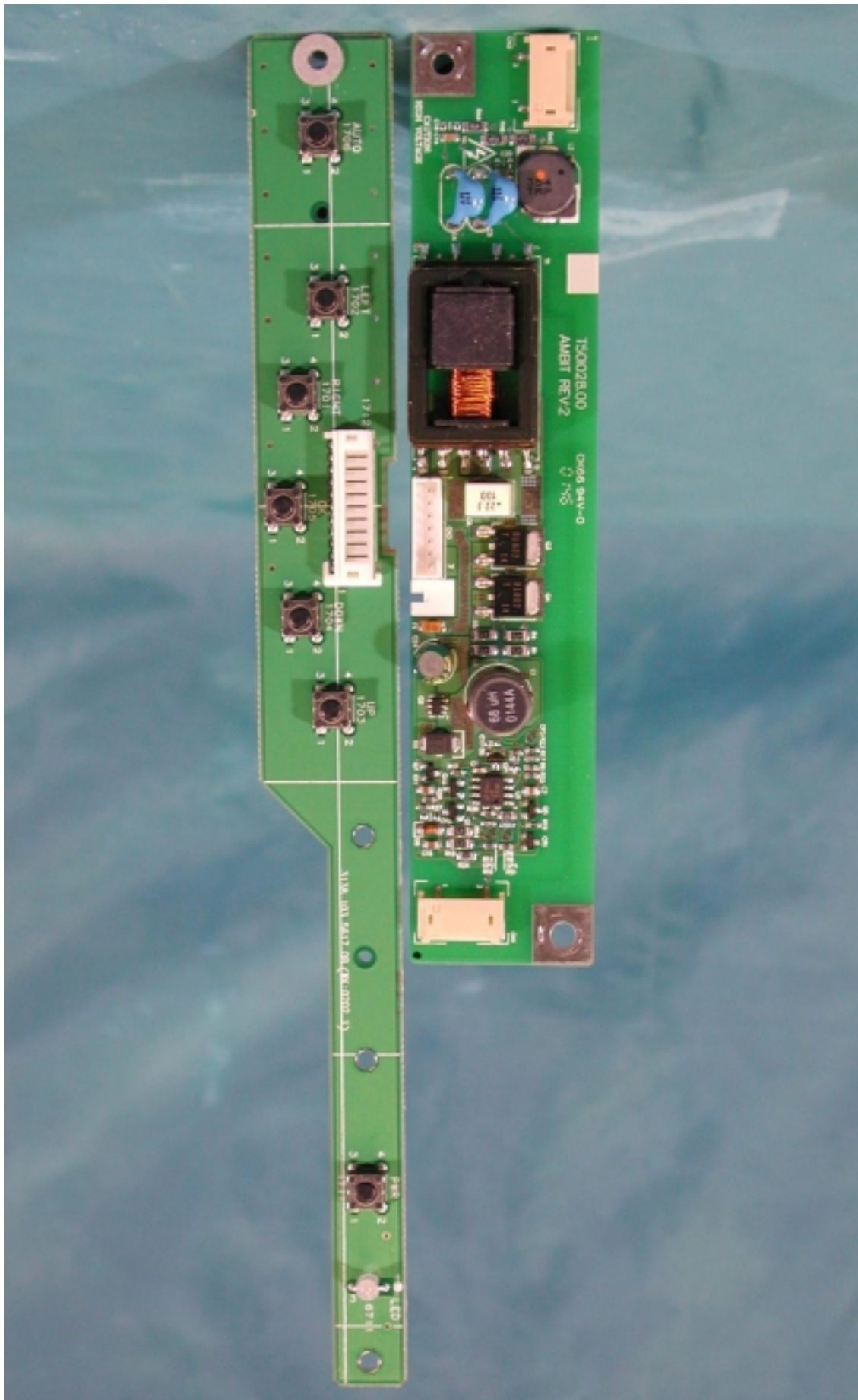
PCB Layout



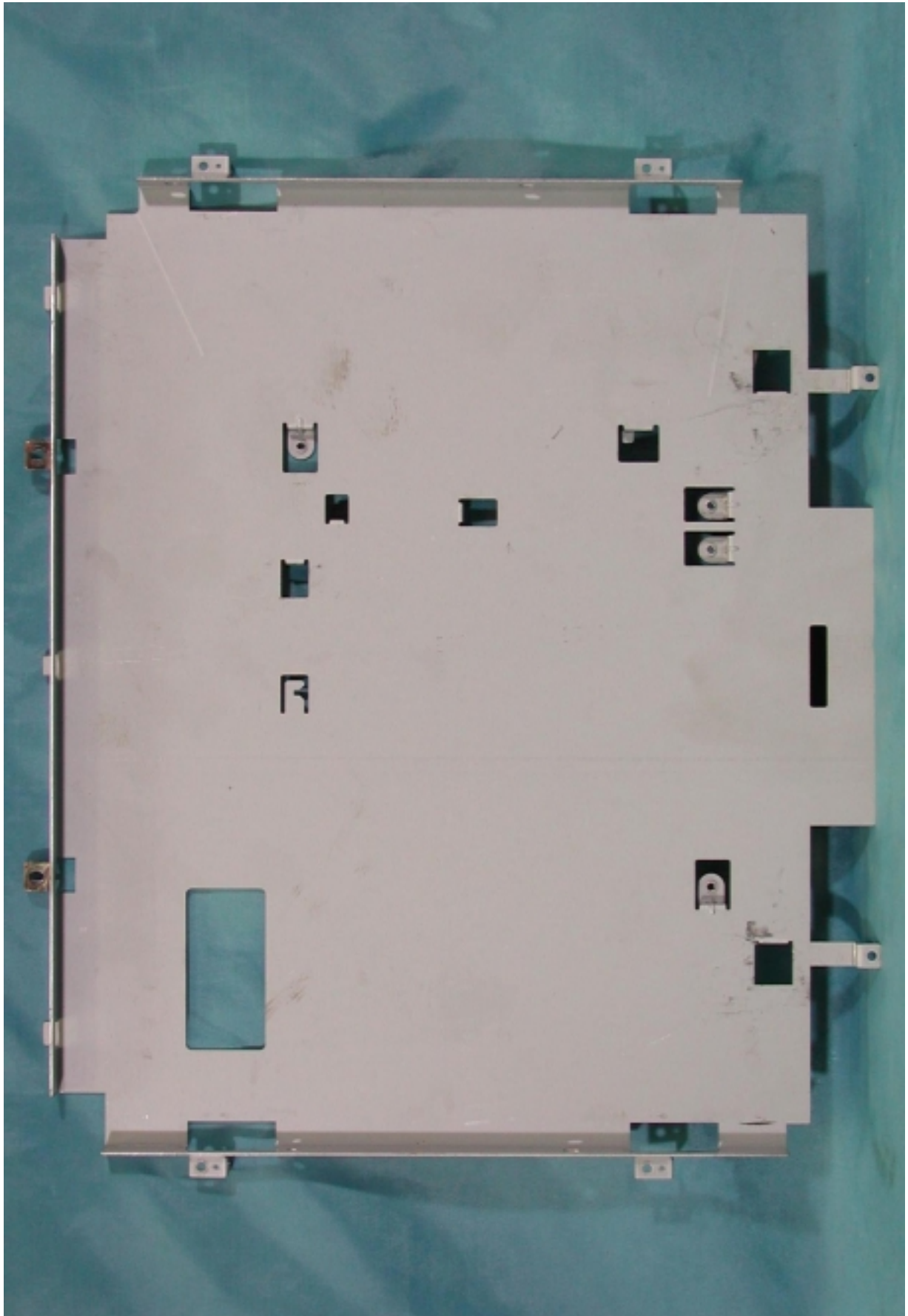
PCB Layout



PCB Layout



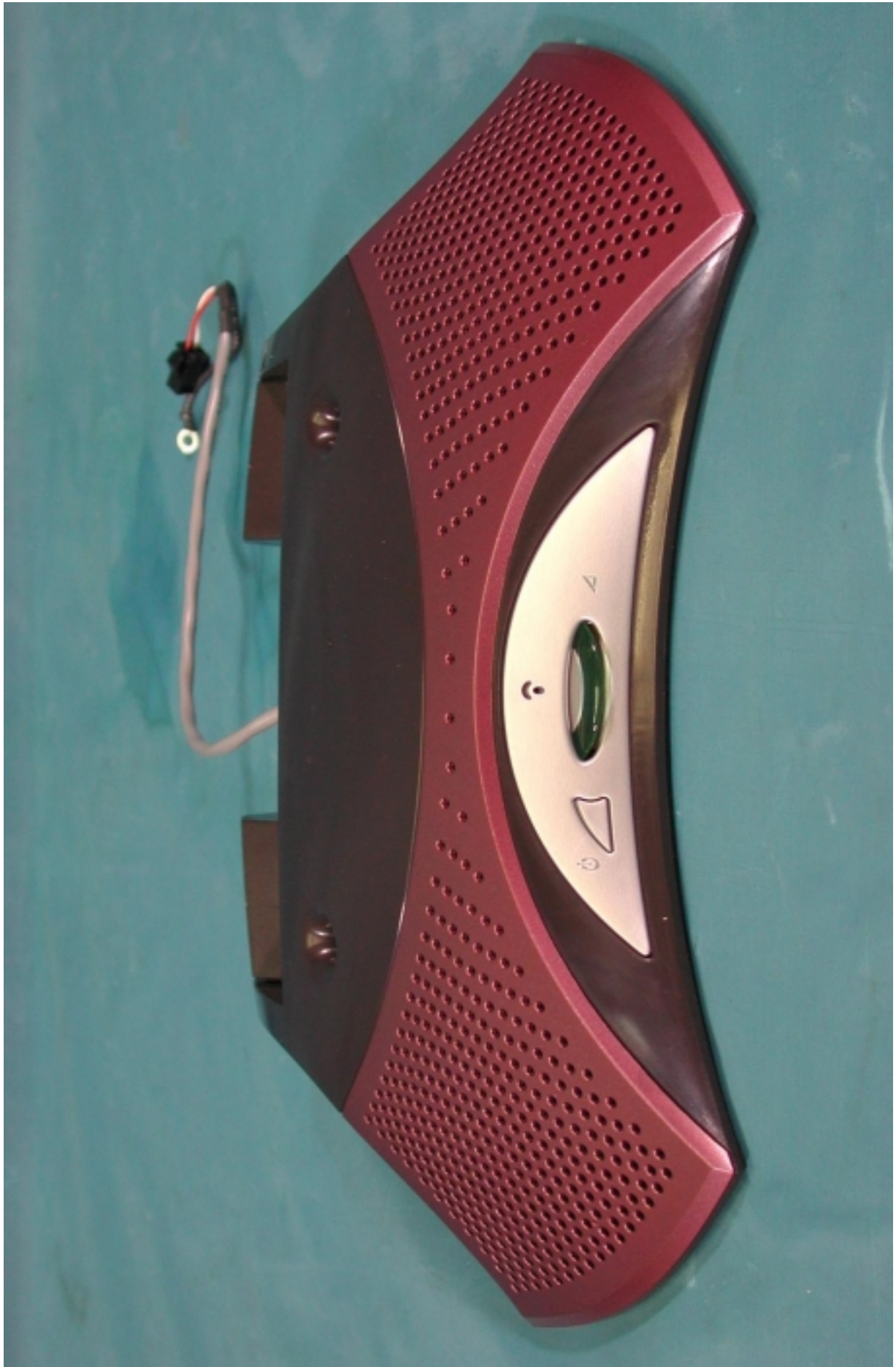
Plate



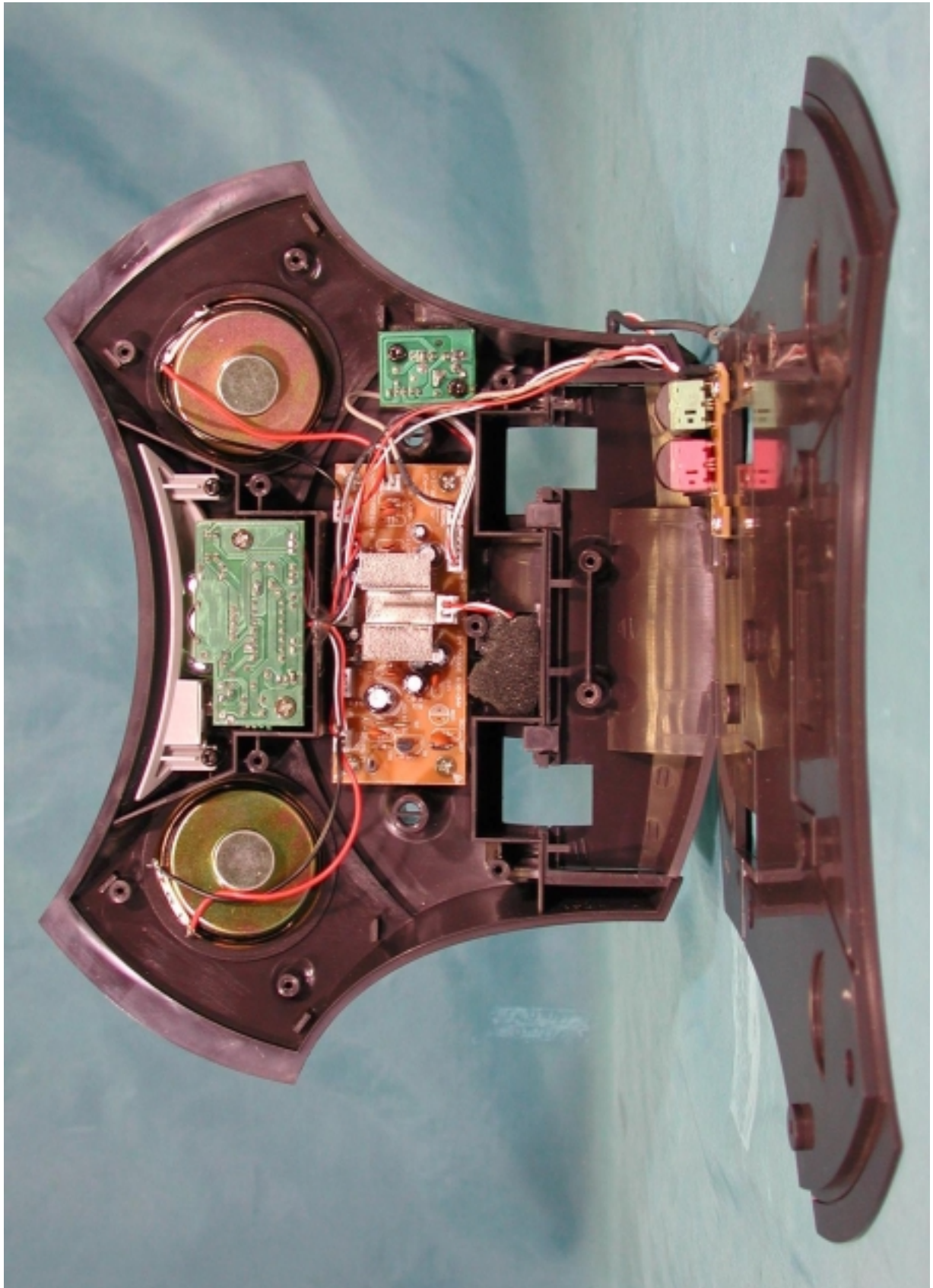
LCD Panel



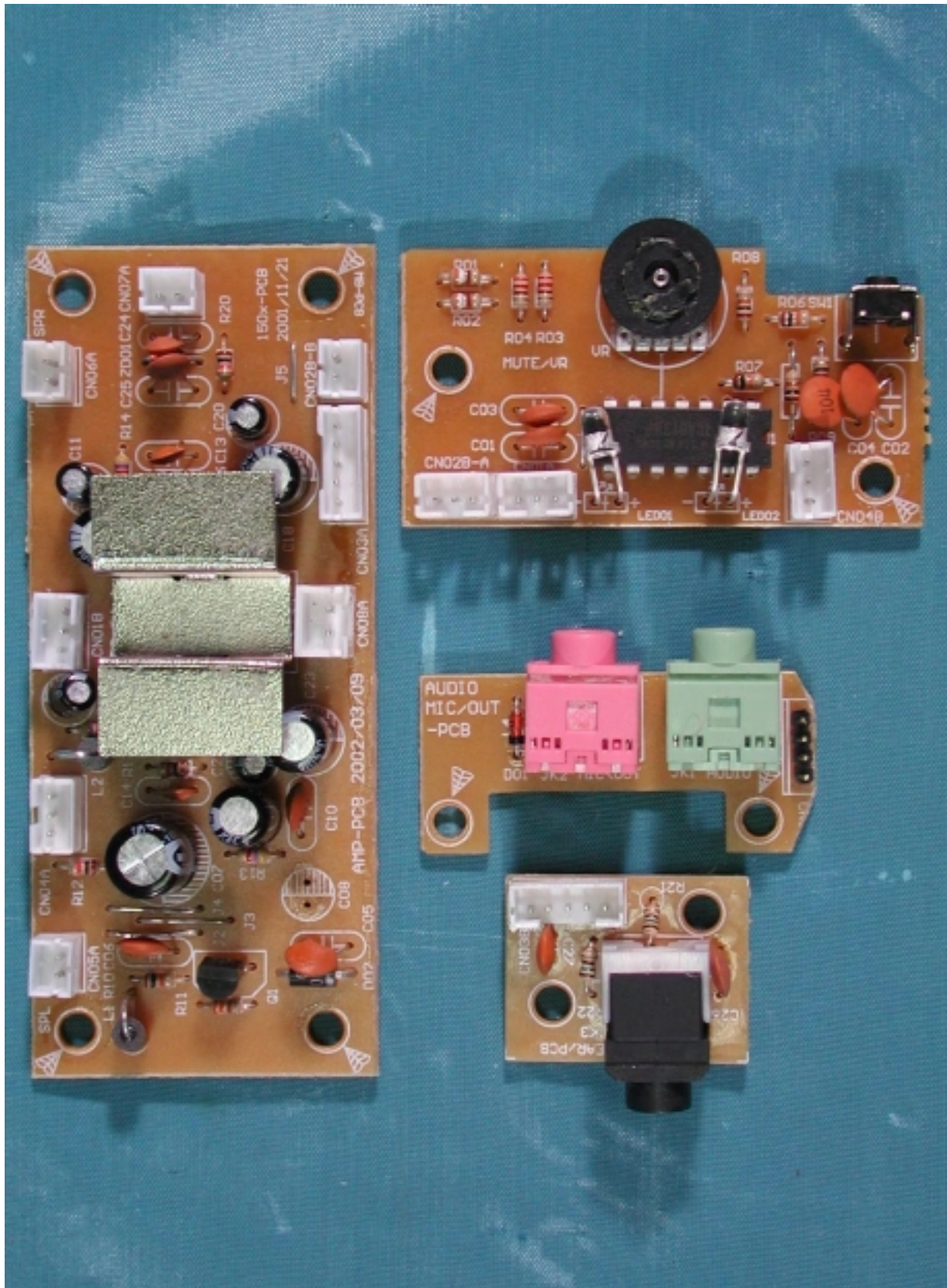
Base View



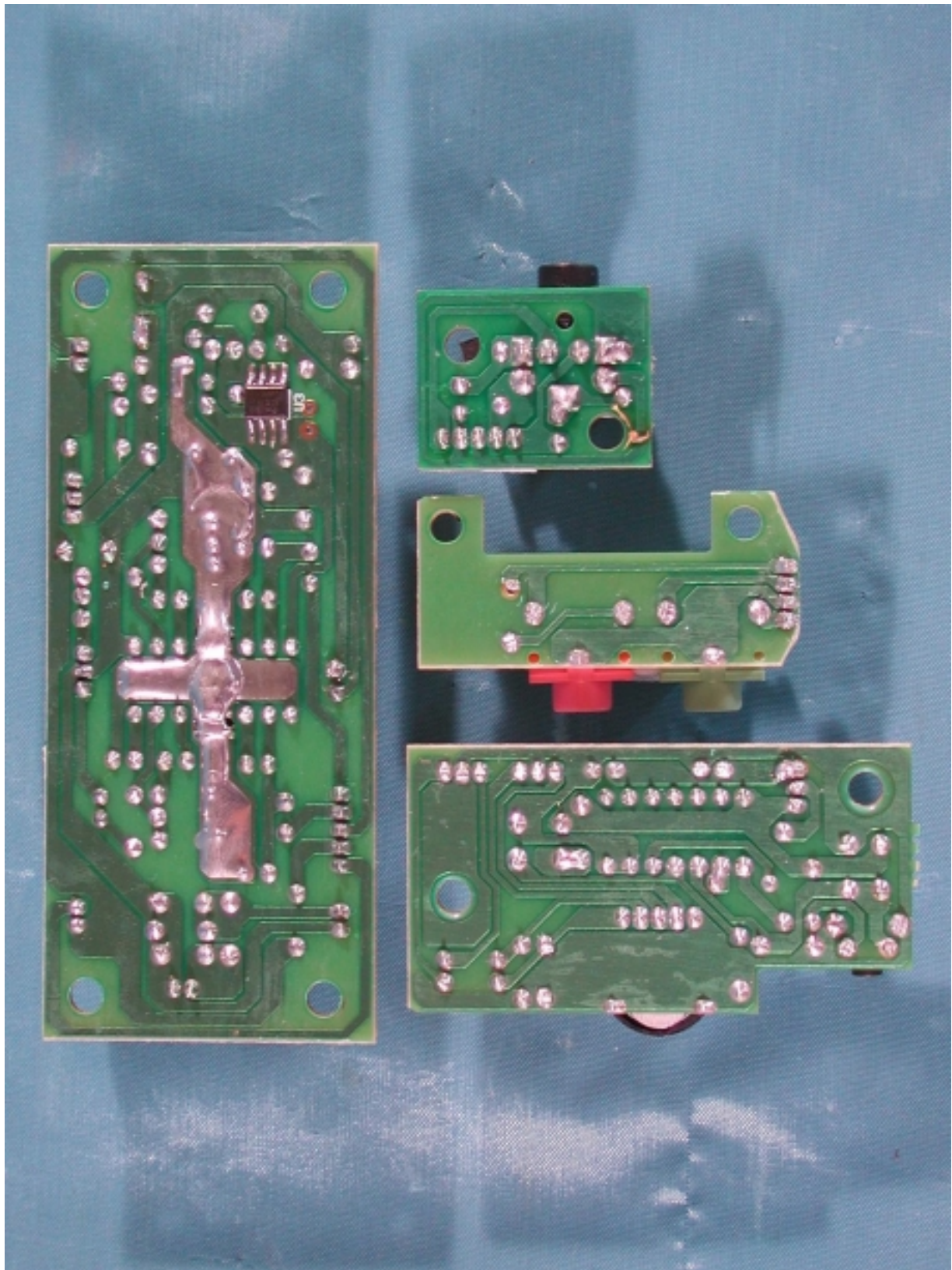
Base Assembly



PCB Layout



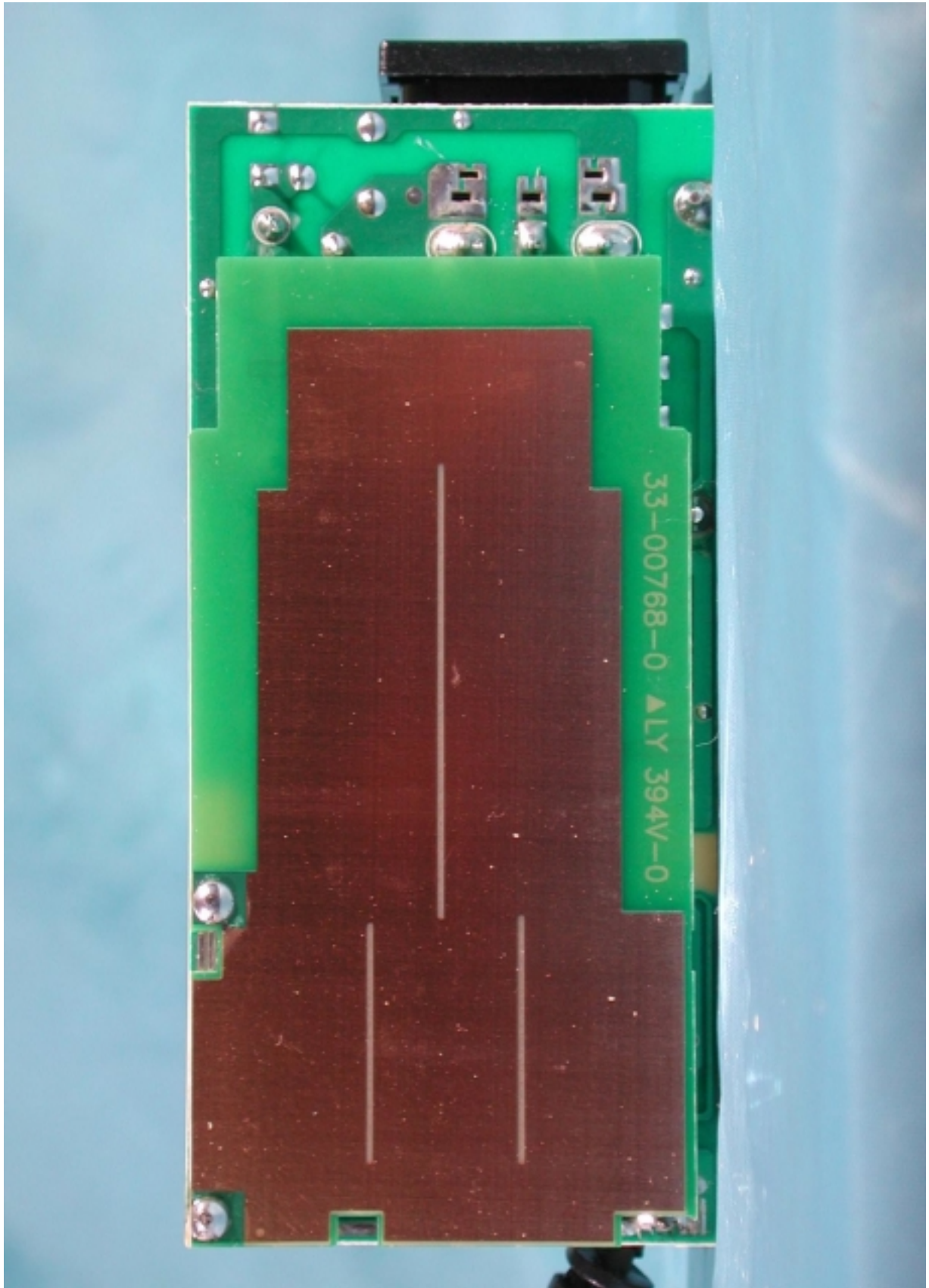
PCB Layout



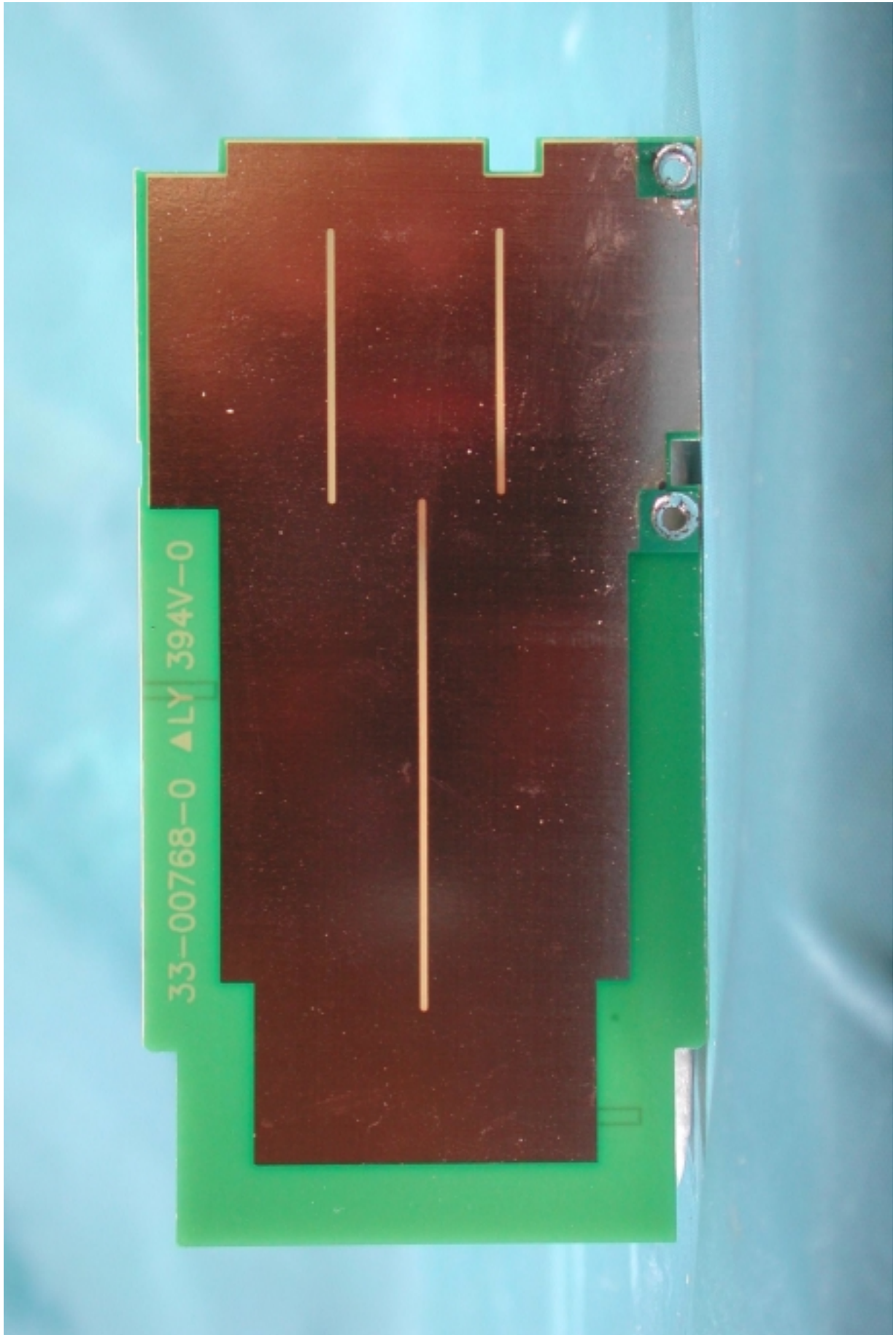
AC Adapter



Assembly W/O Cabinet

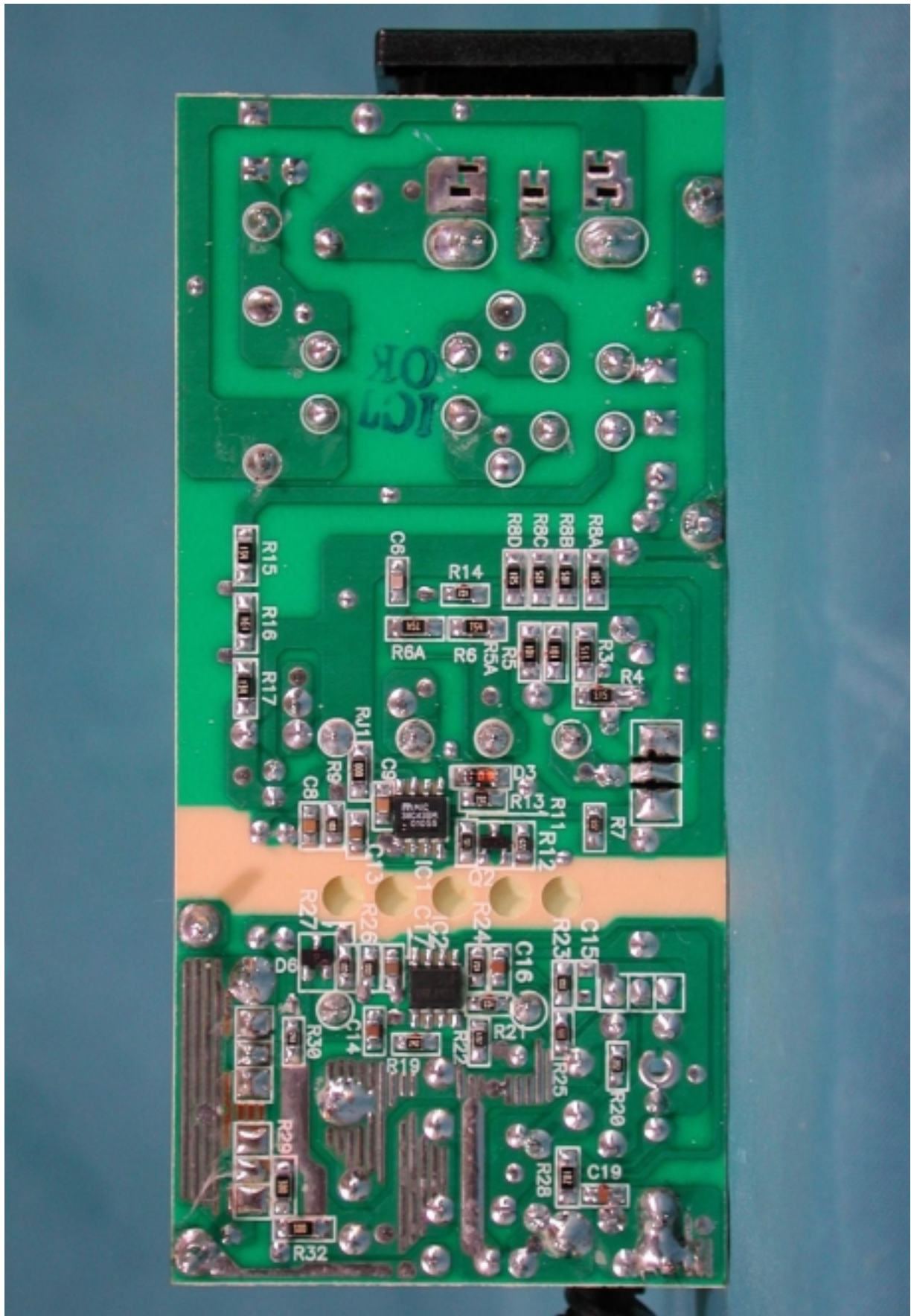


Shielding



PCB Layout





Power Cord and I/F Cables

