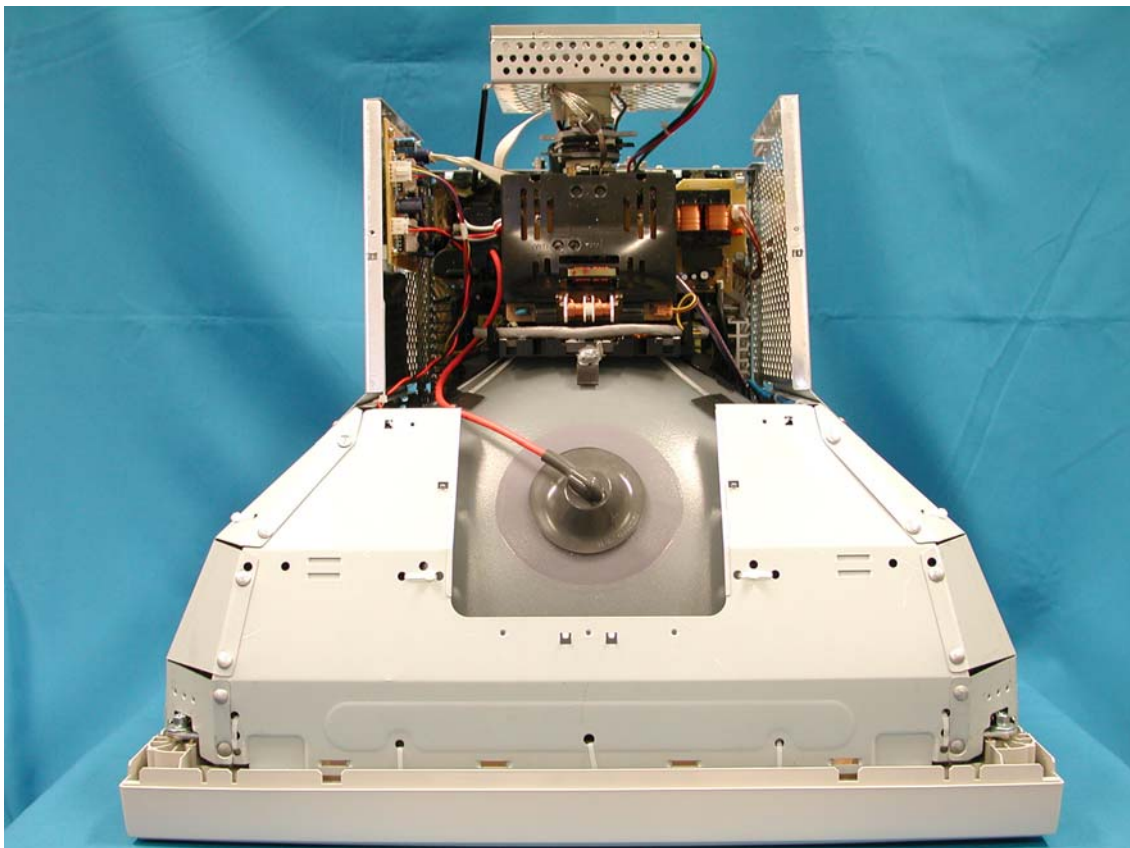


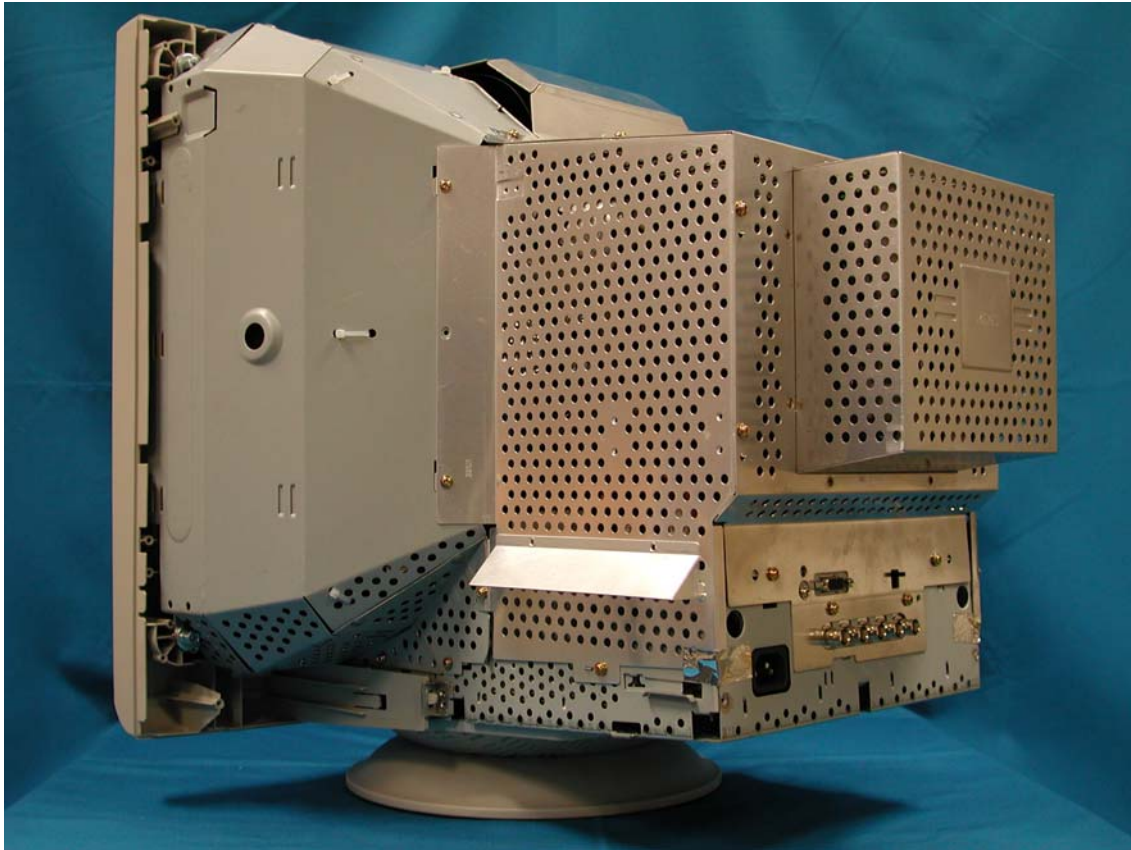
## Label



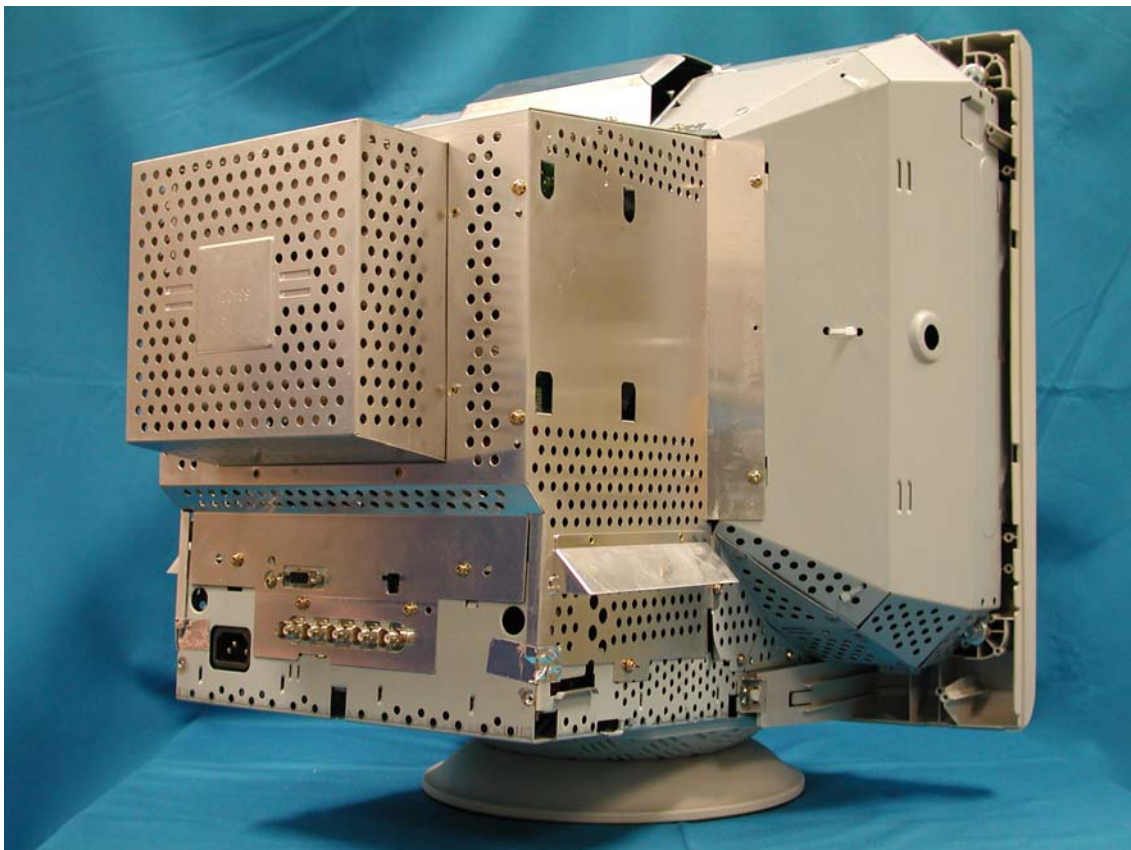
Top View w/o Back cover



Left View w/o Back cover

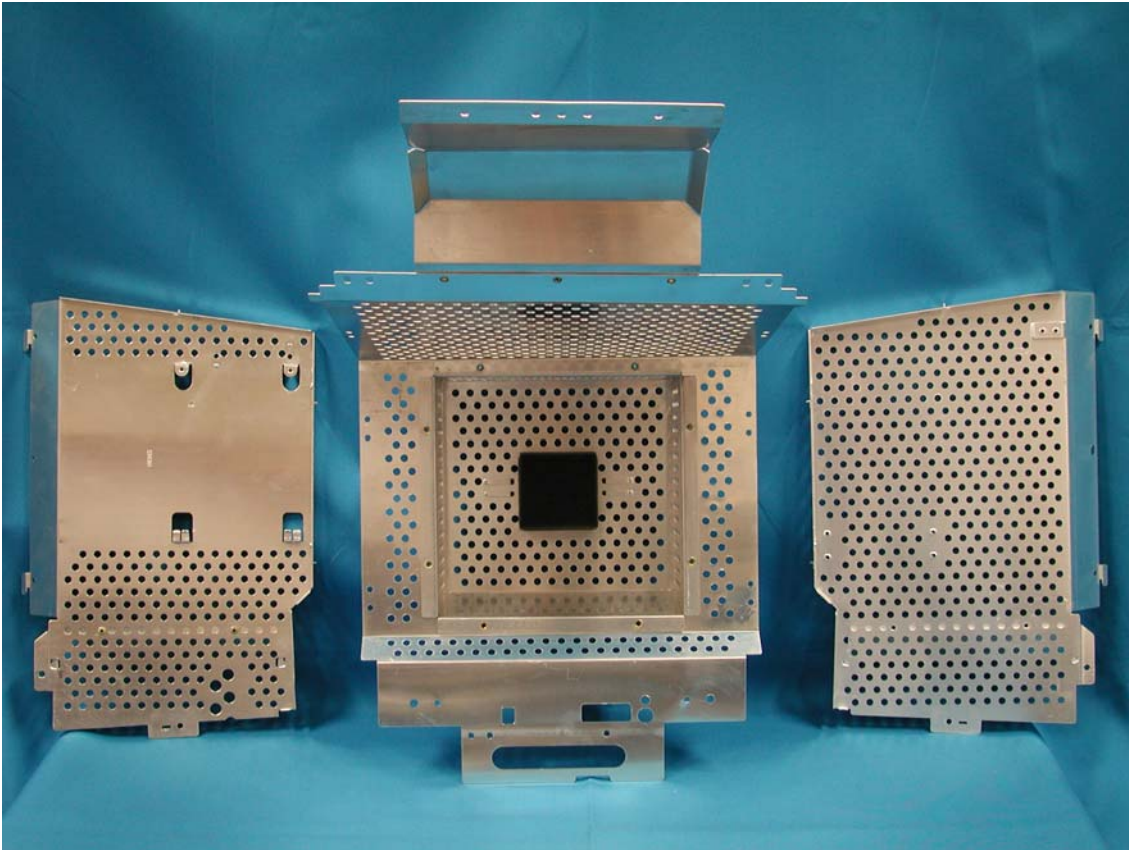


Right View w/o Back cover

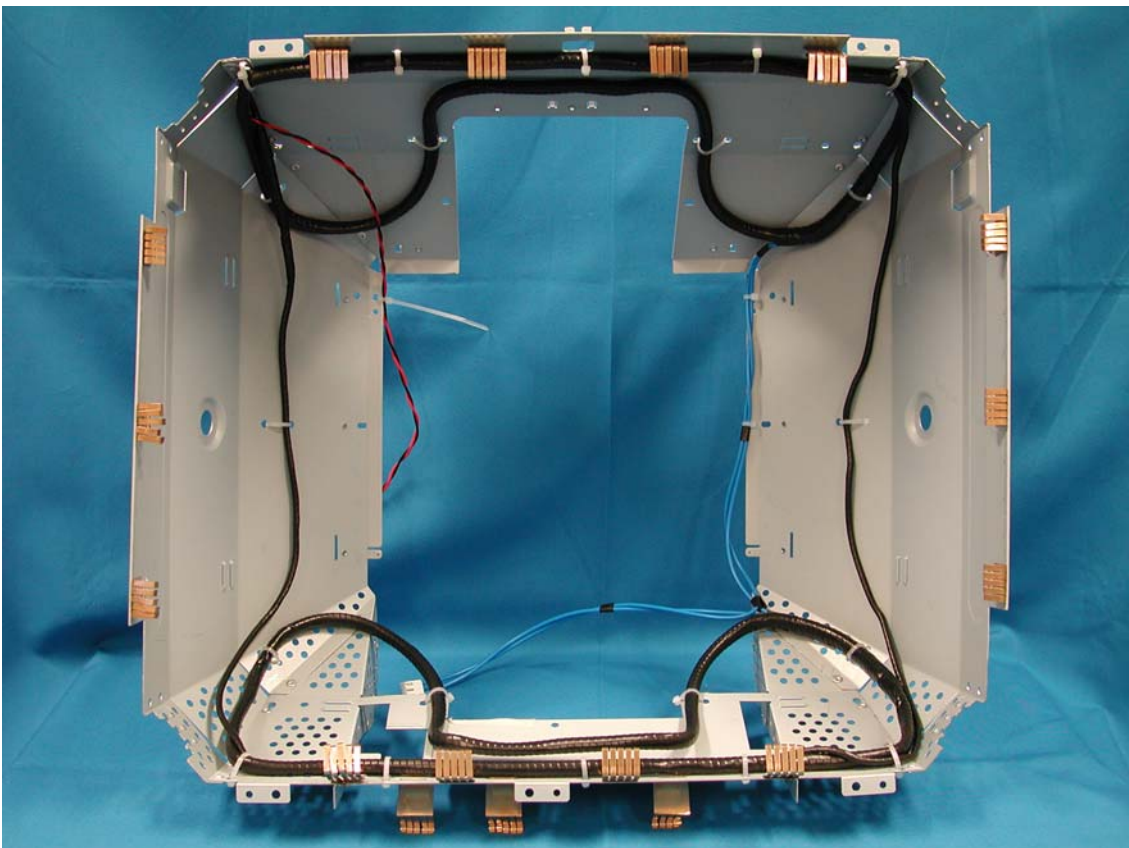




Shielding Cover

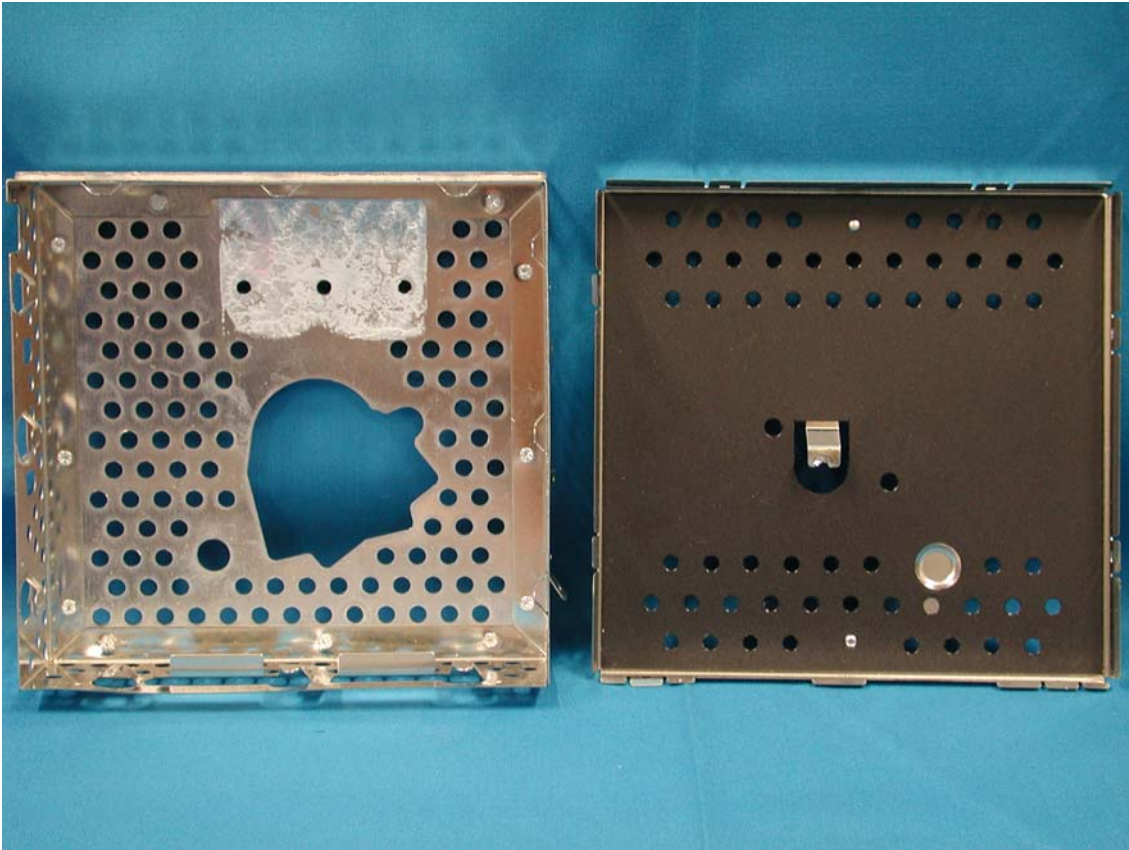


Shielding Cover

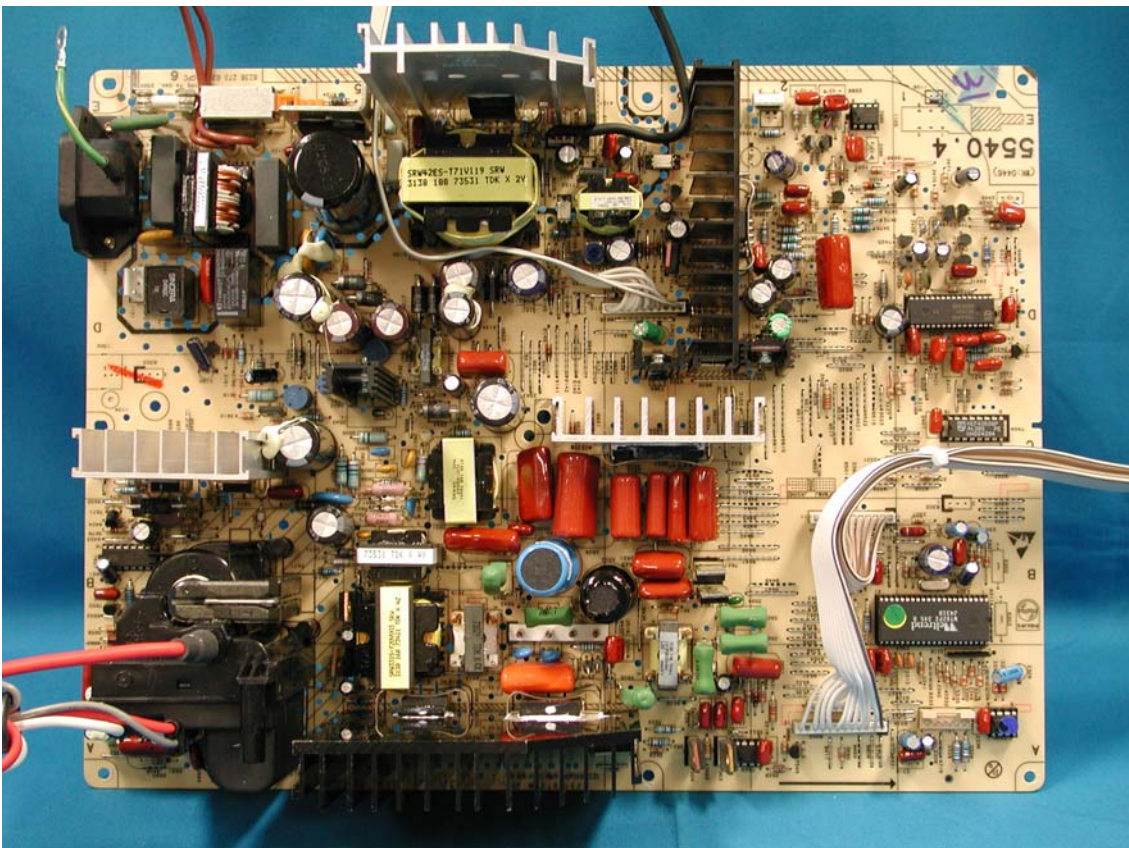




## Shielding Cover

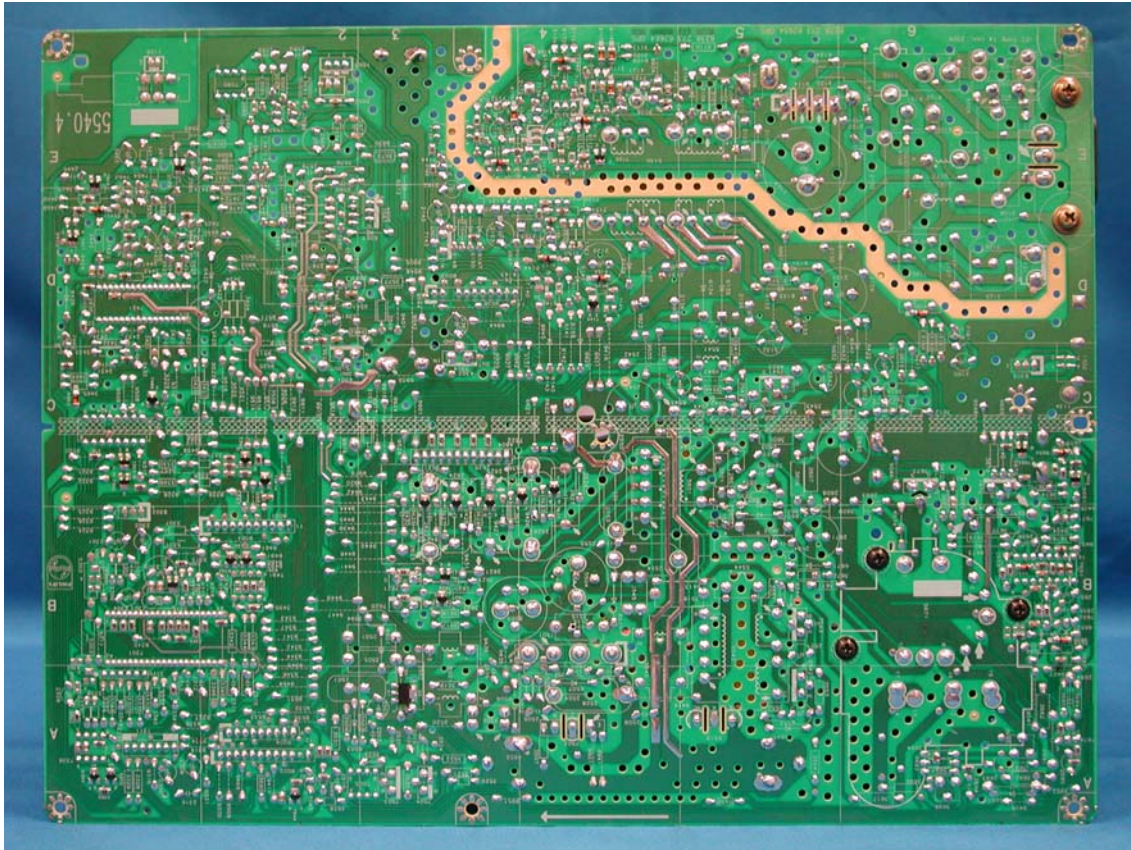


## PCB Layout

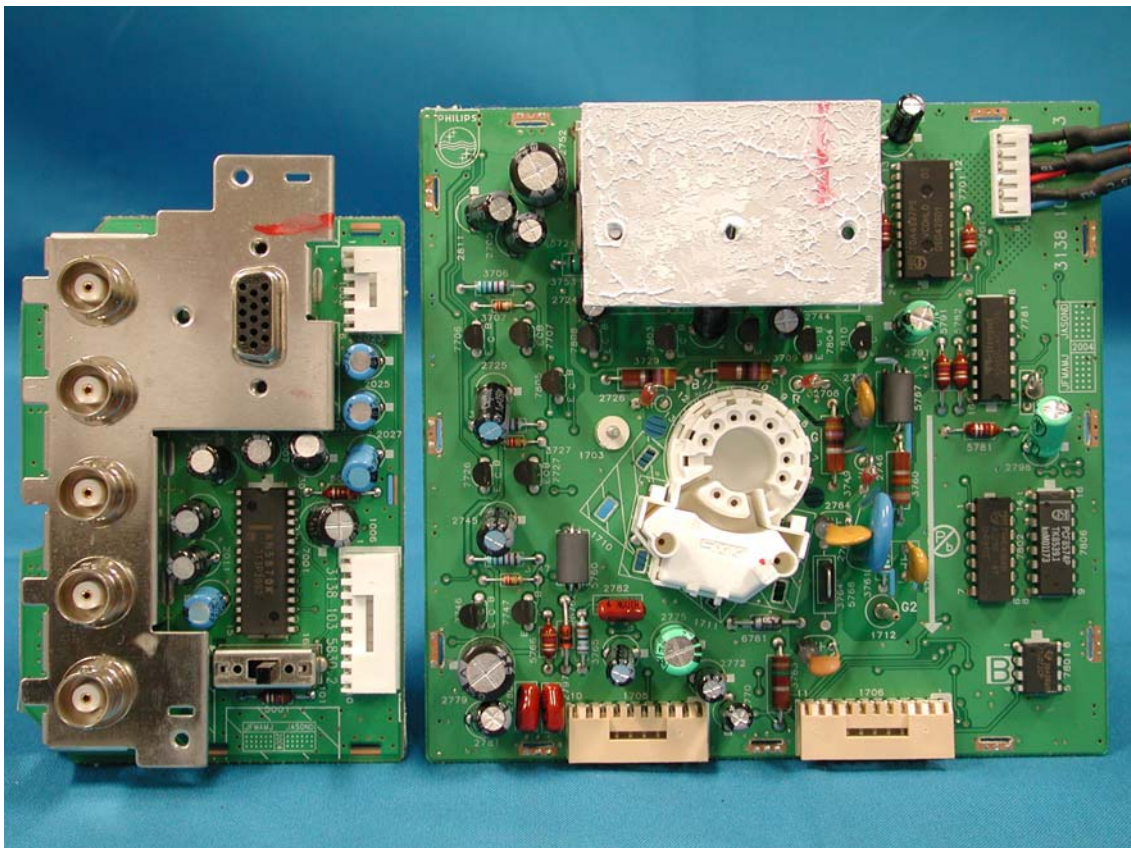




PCB Layout

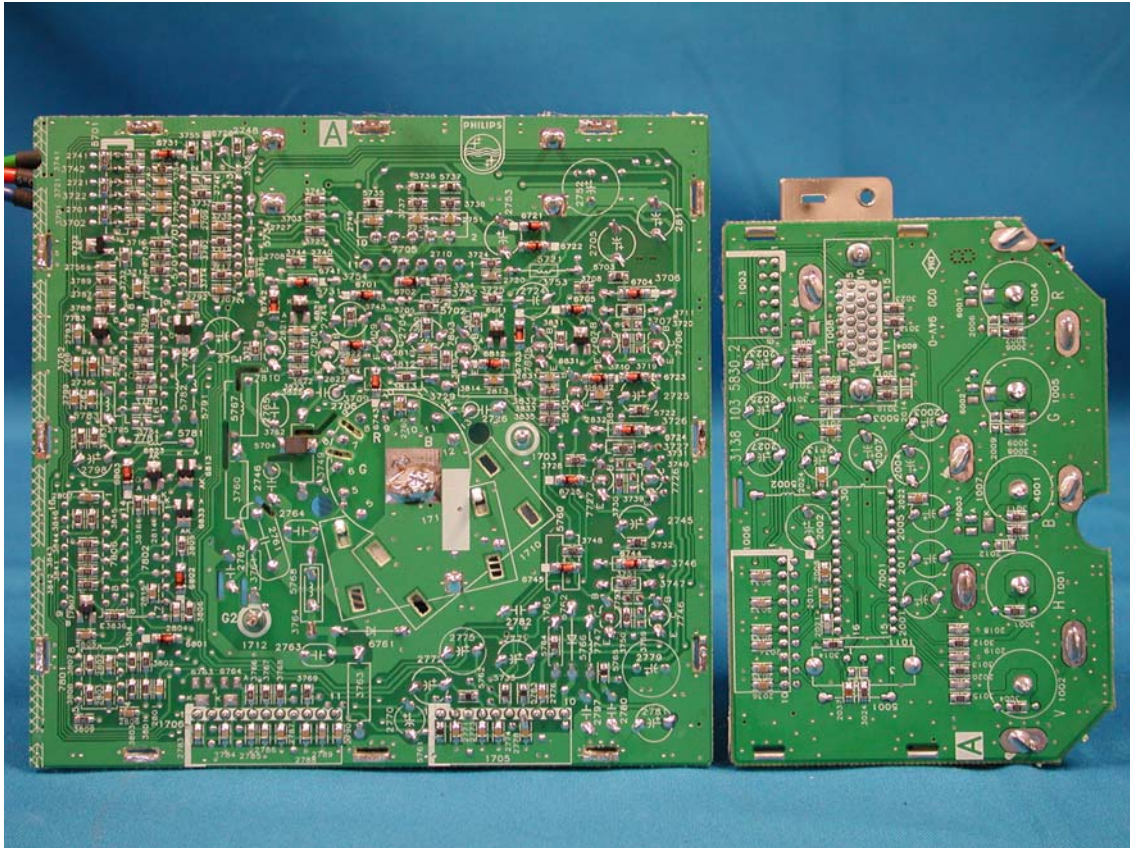


PCB Layout

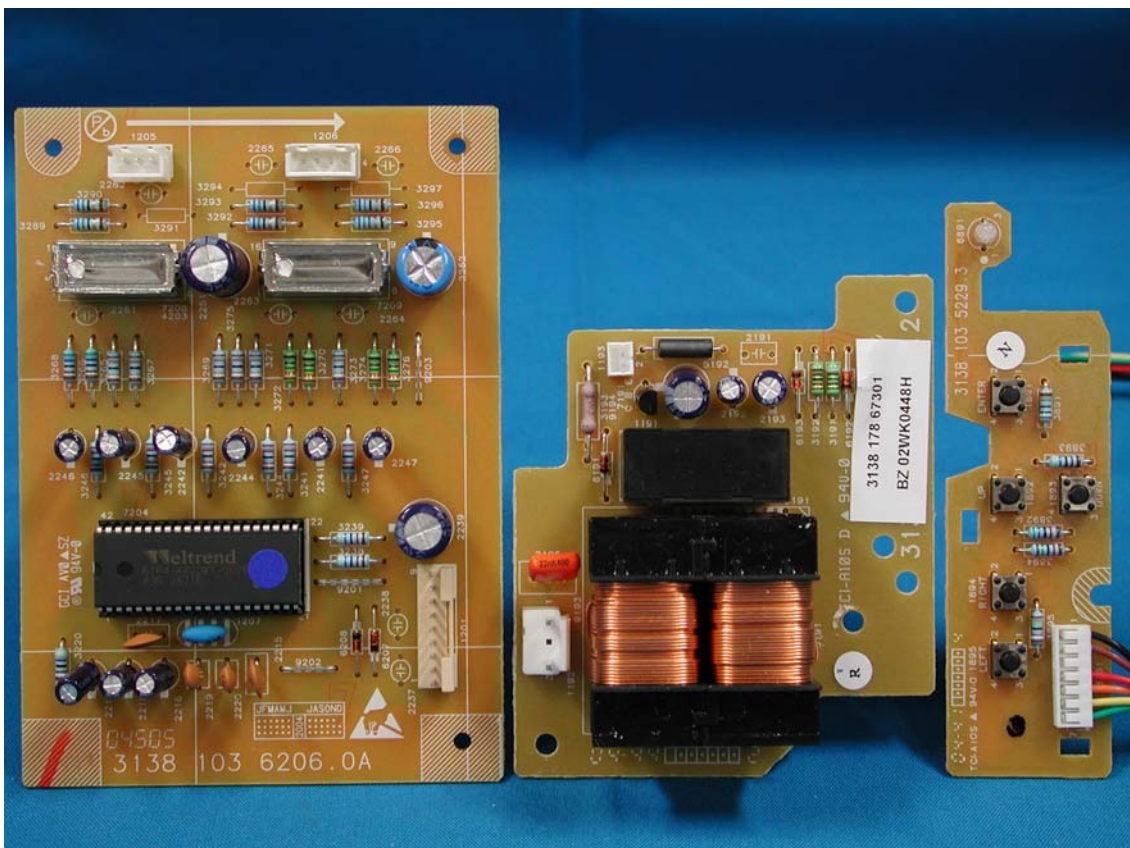




## PCB Layout



## PCB Layout

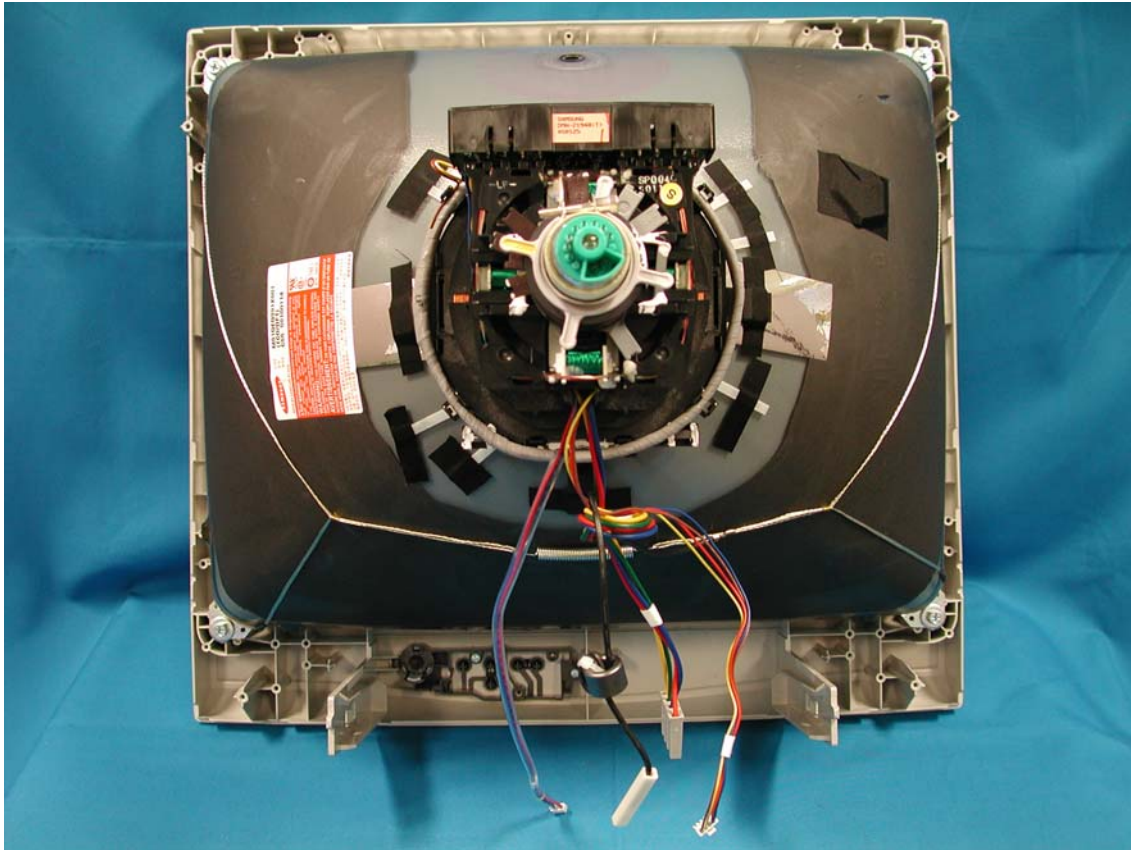




## The image shows the rear of a silver metal server chassis. The back panel is perforated with a grid of small circular holes for ventilation. There are several mounting brackets and screws visible along the edges. A large, rectangular, light-colored component is attached to the bottom left corner. The chassis is set against a blue background.



CRT assembly



Power Cord and I/F Cables

