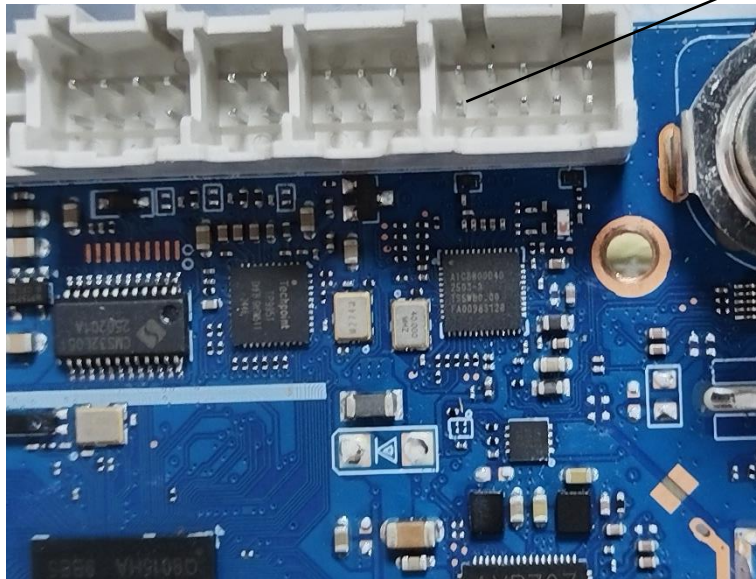


1. Antenna Description:

Antenna type	Internal antenna
Model	GDC269-87-0052-WIFI
Frequency range	2400-2500MHz, 5180-5240MHz, 5745-5825MHz
Manufacturer	Zhejiang New Lianyu Electronics Co., Ltd.
Address	Room 4818, Youquan Road, Nanhu District, Jiaxing City, Zhejiang Province, China
ANT Peak Gain	1.5 dBi for 2400-2500MHz 1.45 dBi for 5180-5240MHz 1.42 dBi for 5745-5825MHz

2. Antenna Photo:



Length:4.5mm

3. Test Equipment & Conditions

3.1 Test instrument

VSWR is tested using Agilent E5071B connected to a hand mechanism, and the status is free space.

3.2 Test environment and methods

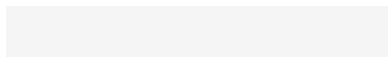
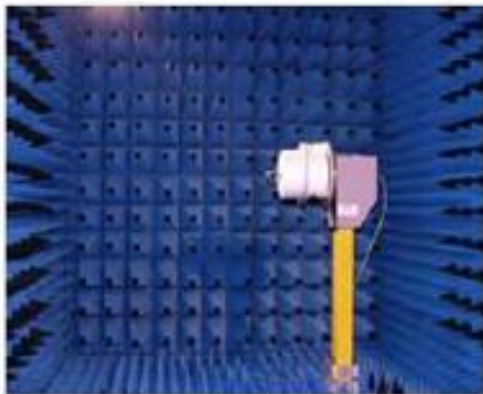
Dark room specifications: ETS-743

TD-SCDMA test equipment: StarPoint SP6010/Agilent 8960

LTE-TDD/FDD-SCDMA test equipment: StarPoint SP8011/CMW500

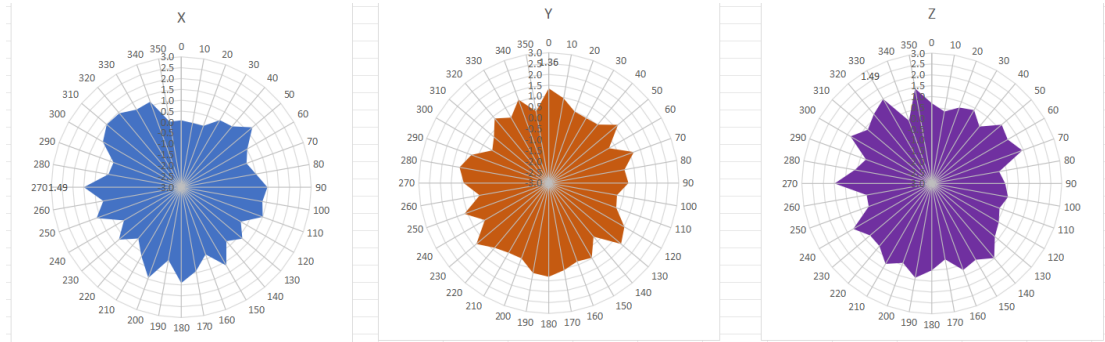
WCDMA/GSM/CDMA test equipment: Agilent 8960

Passive efficiency testing equipment: Agilent Technologies E5071B

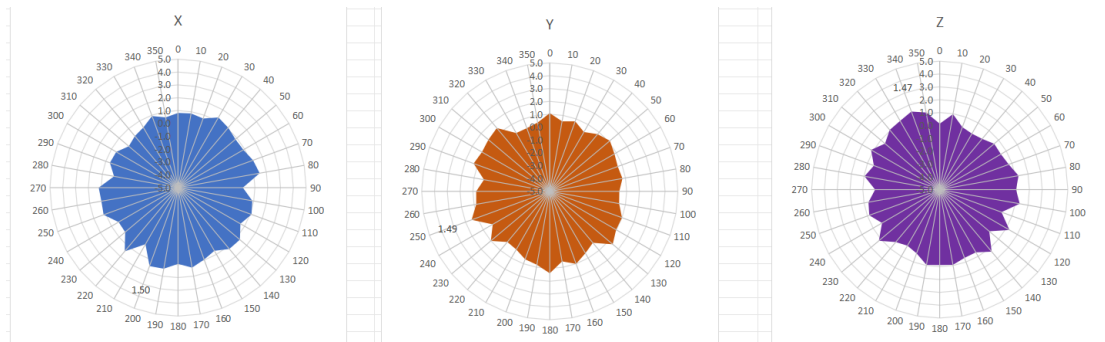


4 . Antenna Radiation Pattern

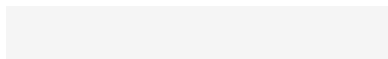
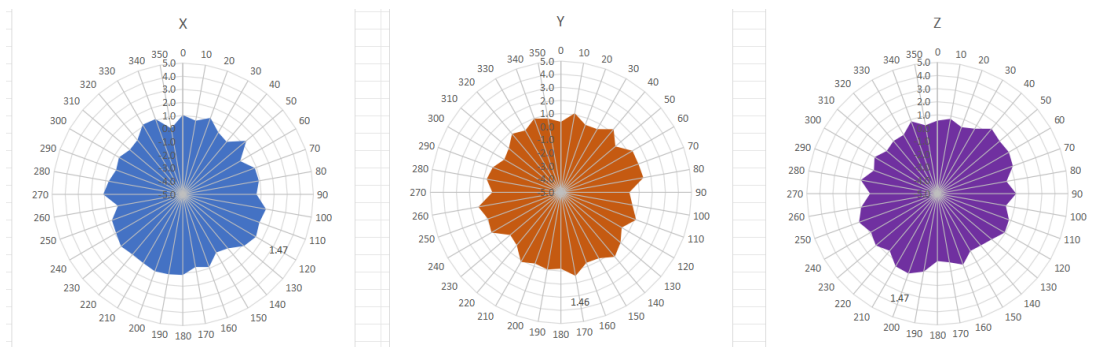
2400MHz



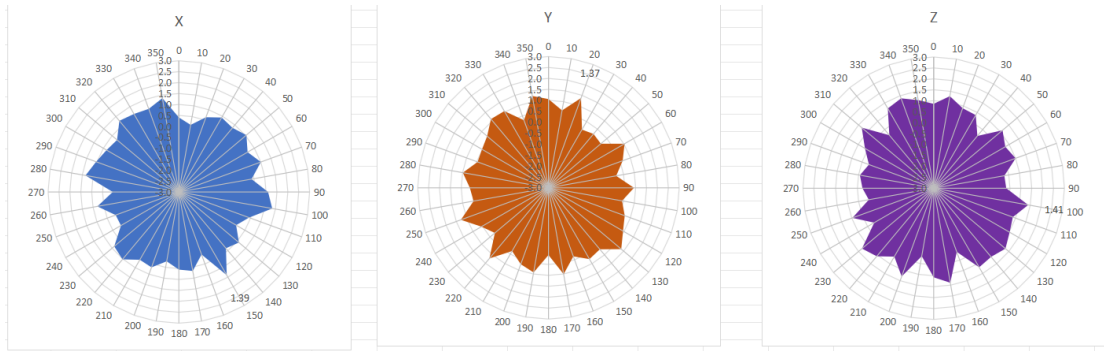
2450MHz



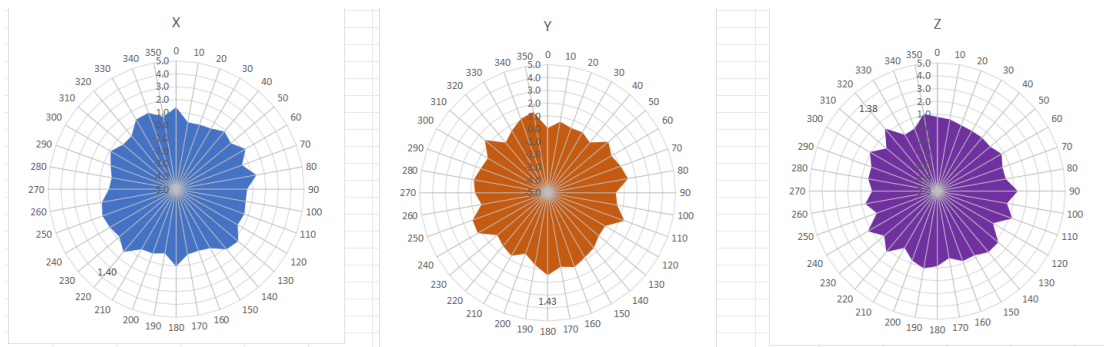
2500MHz



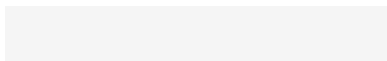
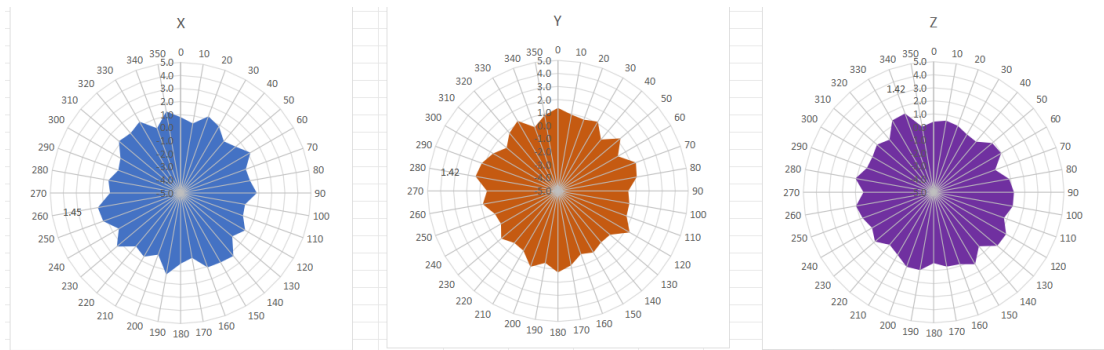
5180MHz



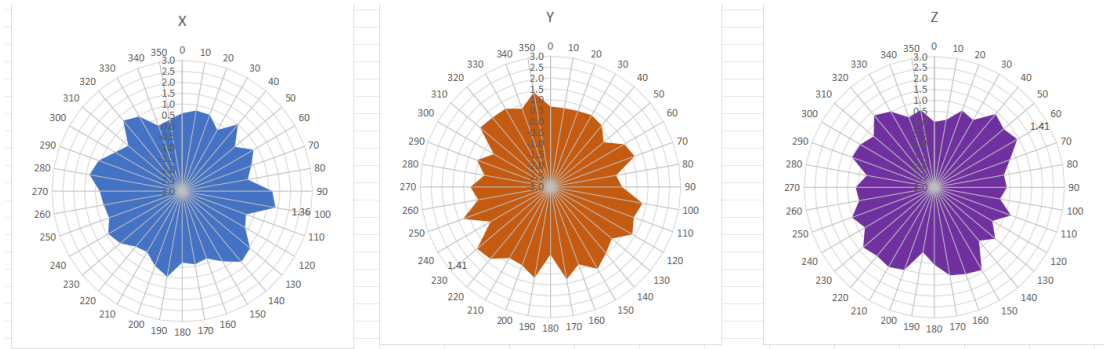
5220MHz



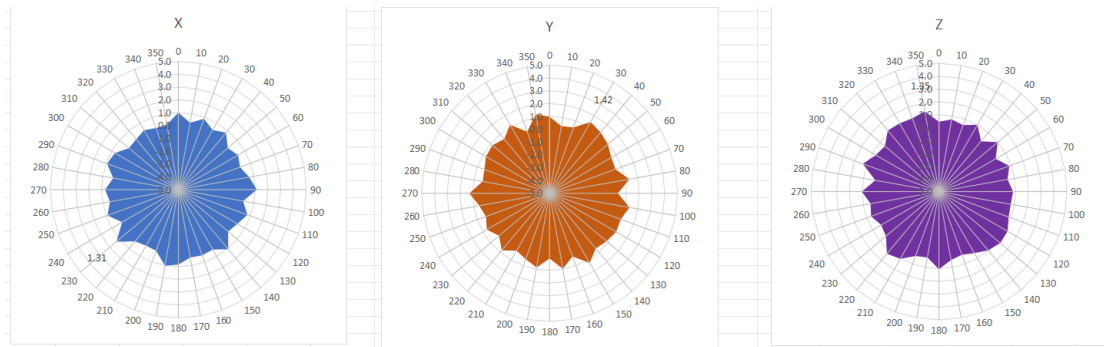
5240MHz



5745MHz



5785MHz



5825MHz

