

User Manual

Carplay & Android Auto

-Original Car Wired To Wireless-

Compatibility Note

- ◆ Please make sure your car supports wired Carplay or Android Auto functions.
- ◆ Required iPhone 6 or later iPhone models with IOS 10 or above for wireless Carplay function.
- ◆ Required an Android smartphone that support latest Android Auto function and with Android 11 or higher for wireless Android Auto function.

How to confirm if your car has Apple wired CarPlay or Android Auto function.

Method 1:

Connect your iPhone or Android smartphone to your car by USB data cable and see connection interface logo on your car display.

Method 2:

Check the compatible list below or check with your car manufacturer to see if your car has this capability.

Check out the website for supported car models



<https://www.apple.com/ios/carplay/available-models/>



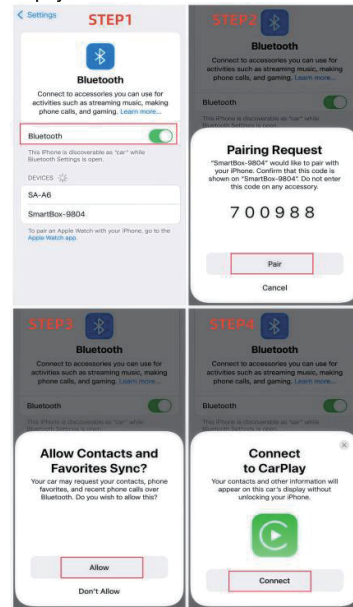
<https://www.android.com/autor/>

Please read the manual carefully before use.
Recommend keeping this manual for future reference.

How to use

1. Start the car and wait for the car head until system to be loaded.
2. Connect the Wireless Carplay & Android auto adapter to the USB-A or Type-C port in your car. Please be sure plug the adapter into the port that is for wired apple Carplay or android auto.
3. After the device is successfully linked to the vehicle, there will be a Bluetooth prompt screen, and the Bluetooth name will be prompted as: smartBox-xxxx.
4. Turn on the Bluetooth of your mobile phone, search and pair the Bluetooth 'smartBox-xxxx', and continue to agree to use it, then you can use the Carplay or android auto function normally.
5. Some models linked to Android Auto will not display the Bluetooth prompt interface. But it doesn't matter, you can directly search for Bluetooth smartBox-xxxx on your mobile phone, pair it and use Android auto normally.
6. Please note that you should keep your phone Bluetooth turned on, so that you can automatically link Carplay or android auto next time.
7. **LED status indicator**
 - ▶Power on:
CP Model: Red and green lights flicker.
AA Model: Red and blue lights flicker.
 - ▶Waiting for Bluetooth pairing:
CP Model: Green light flashing.
AA Model: Blue light flashing.
 - ▶Linked:
CP/AA Same: Colorful changes every 12 seconds.

Carplay Connection



Android Auto Connection

