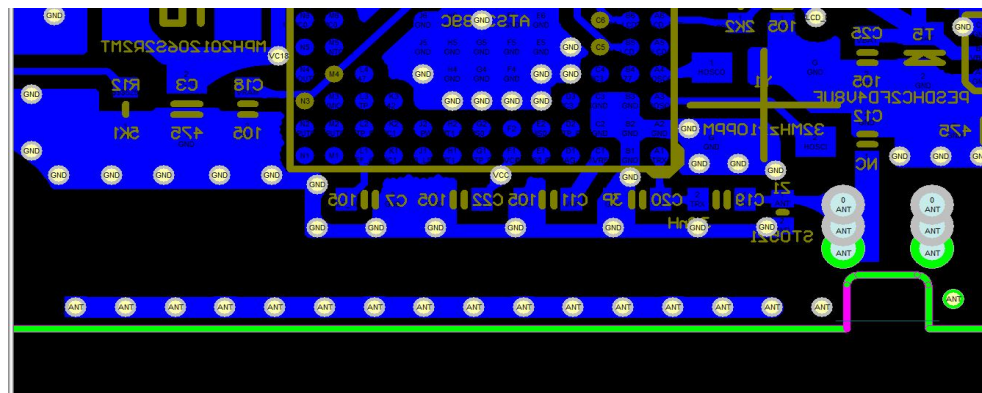
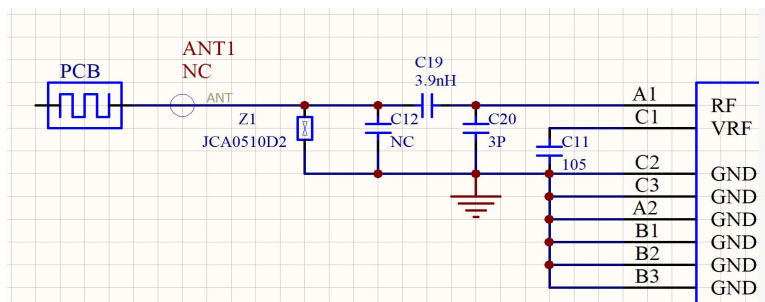


Antenna Specification

specifications

	specification
manufacturer	Shenzhen Xinlianxin Times Technology Co., LTD
address	Room 601, Block A, Building 1, Xingzhan Plaza, No. 446, Shajing South Ring Road, Shatou Community, Shajing Sub-district, Bao 'an District, Shenzhen China
model	C01-V1
Antenna type	onboard antenna
Working Frequency Range	2400-2500 MHz
Gain	(-2dBi) Typical
VSWR	≤3
Polarization	Linear
Azimuth Beamwidth	Omni-directional
Impedance	50 Ω
Operation Temperature	(-40°C~+85°C)



Properties

Width: 12mil

Layer: Bottom

Net: ANT

Locked:

Selection:

Start - X: 591mil

Start - Y: 12.5mil

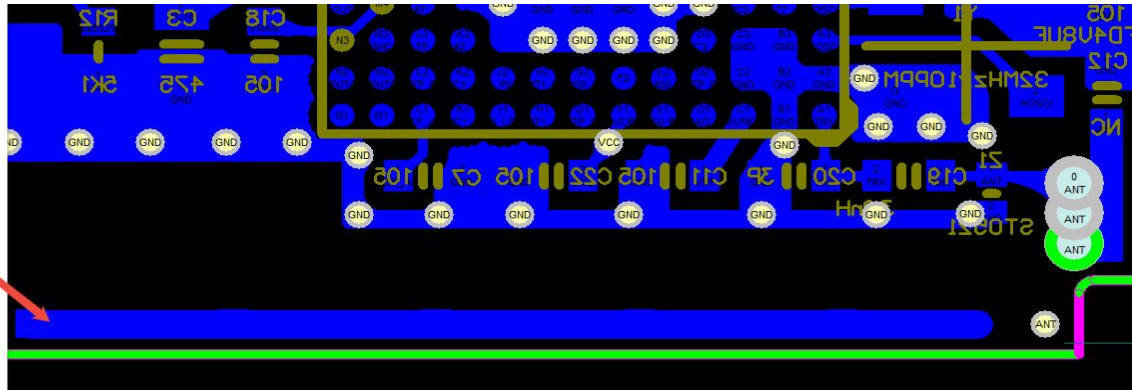
End - X: 962mil

End - Y: 12.5mil

Keepout:

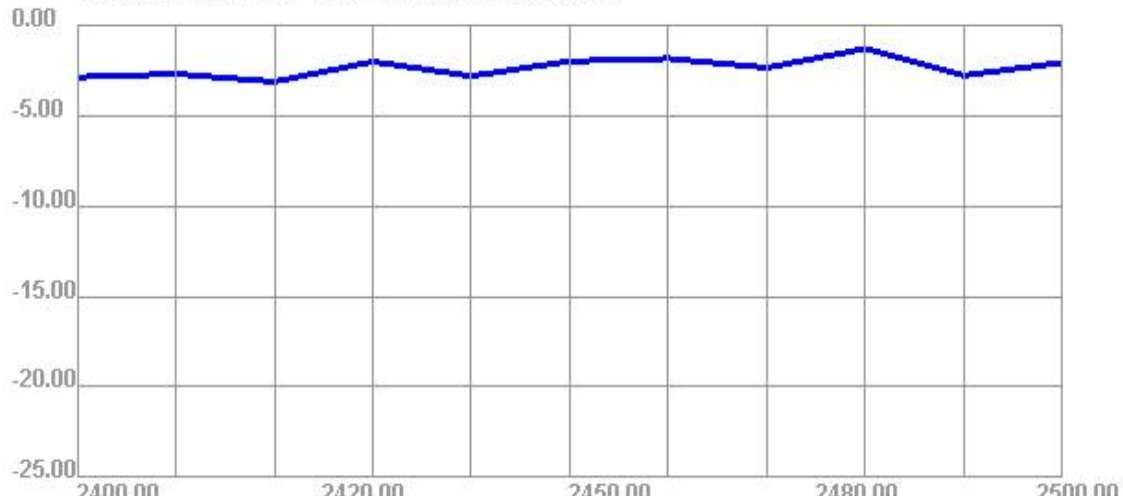
OK Help

Cancel Global >>



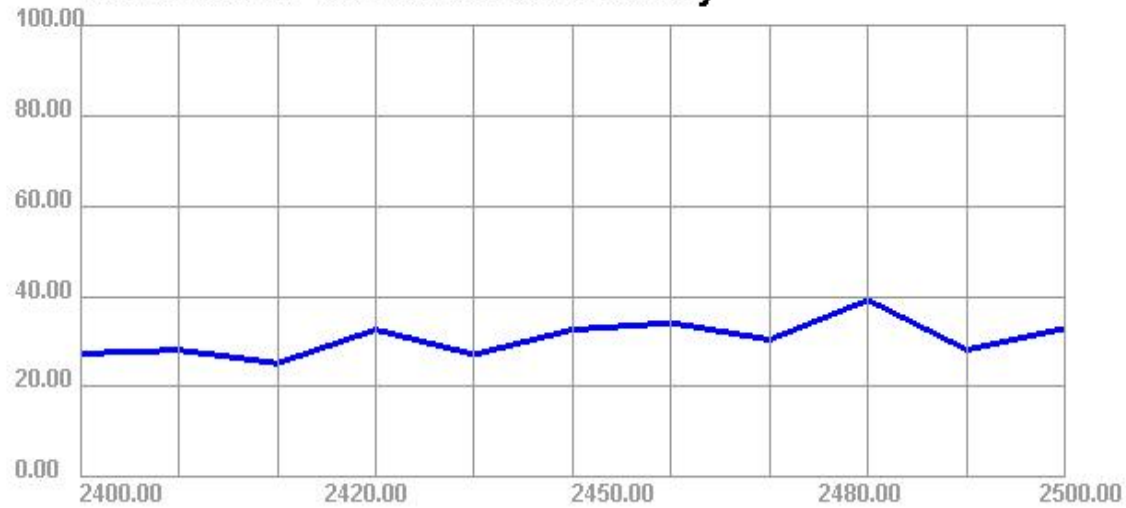
Passive Test For BT2.4			
Freq (MHz)	Effi (%)	Gain (dBi)	Directivity (dBi)
2400	27.38	-2.88	5.63
2450	32.67	-2	4.86
2500	32.96	-2.08	4.82

2400.00MHz - 2500.00MHz Gain

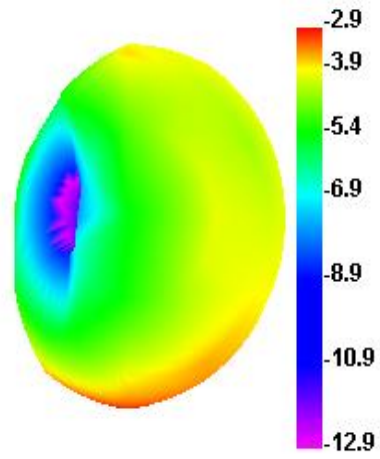


2400.00 2420.00 2450.00 2480.00 2500.00

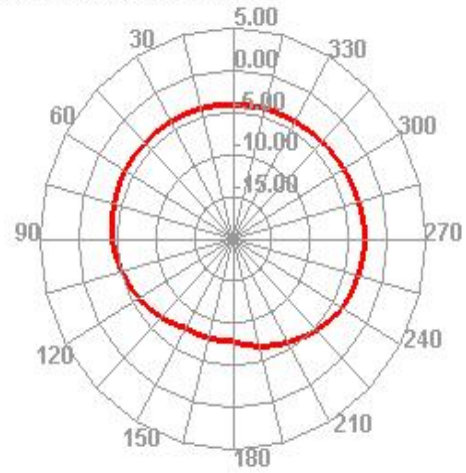
2400.00MHz - 2500.00MHz Efficiency



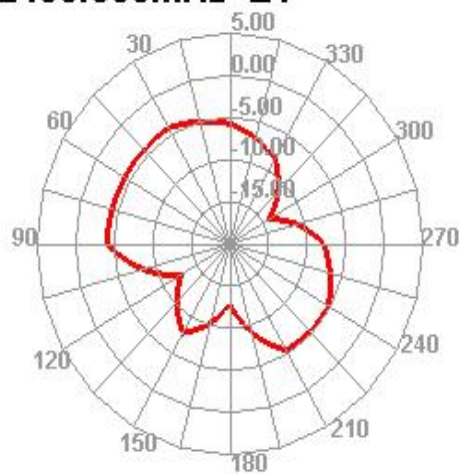
2400.000MHz



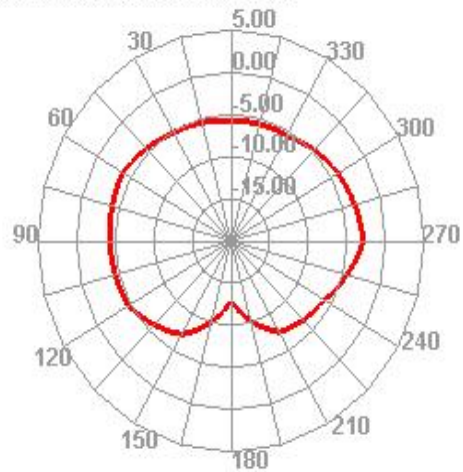
2400.000MHz H



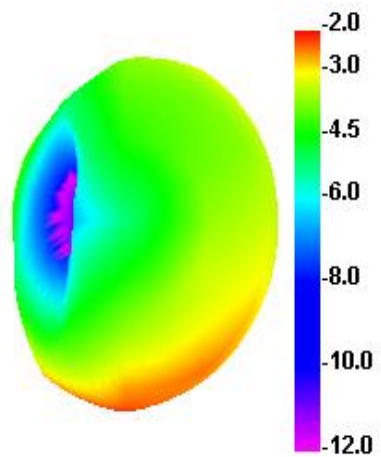
2400.000MHz E1



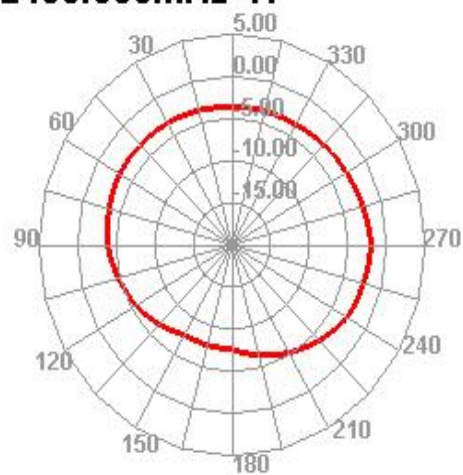
2400.000MHz E2



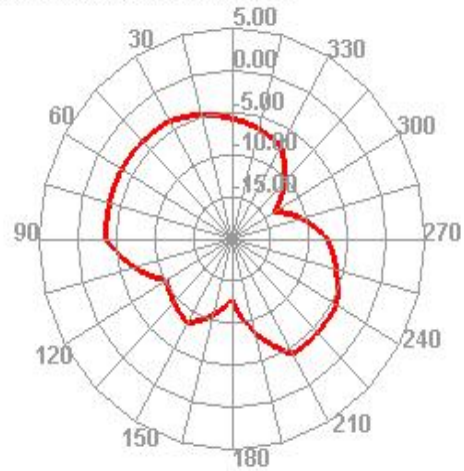
2450.000MHz



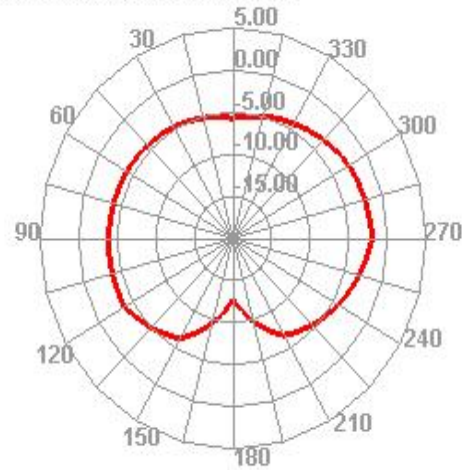
2450.000MHz H



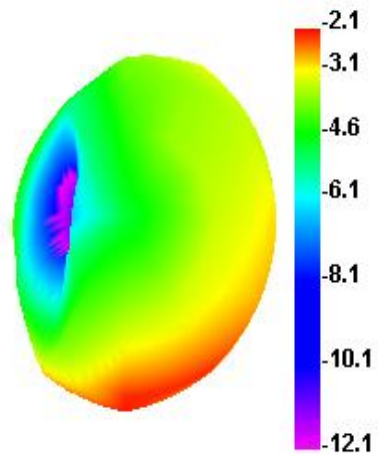
2450.000MHz E1



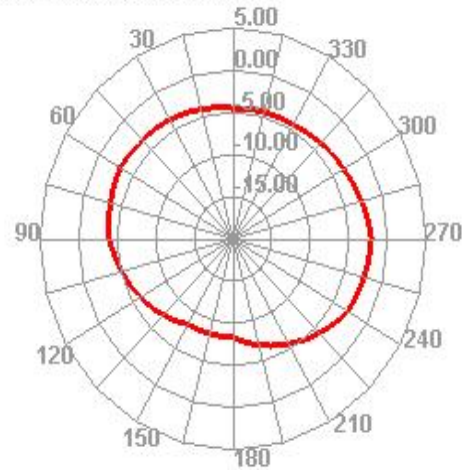
2450.000MHz E2



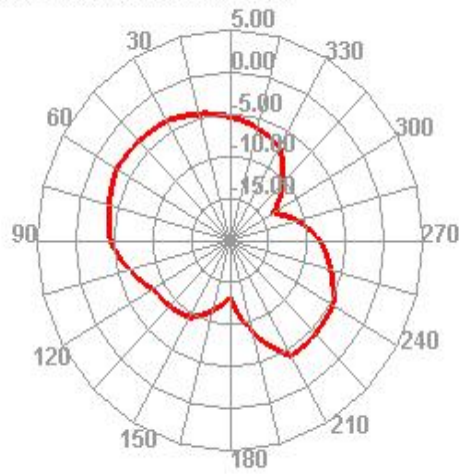
2500.000MHz



2500.000MHz H



2500.000MHz E1



2500.000MHz E2

