



Test Graphs:

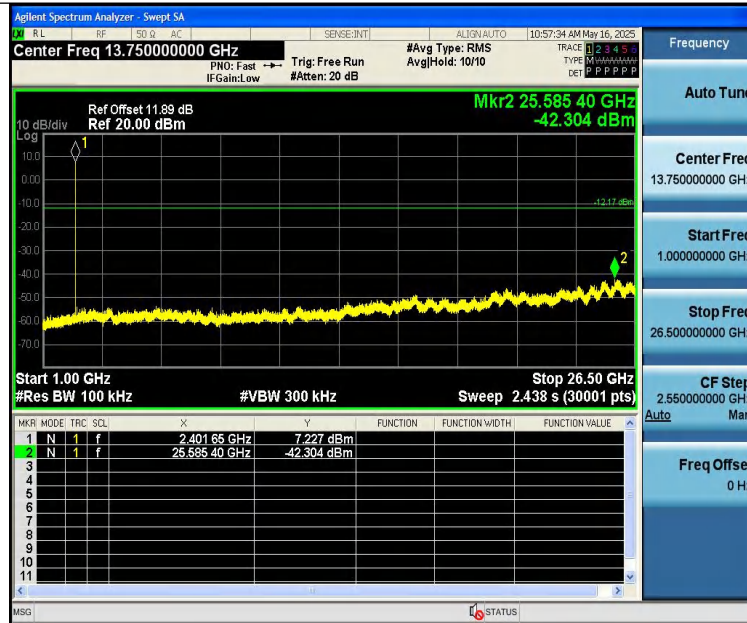
DH5-Ant1-2402-0~Reference-PASS



DH5-Ant1-2402-30~1000-PASS



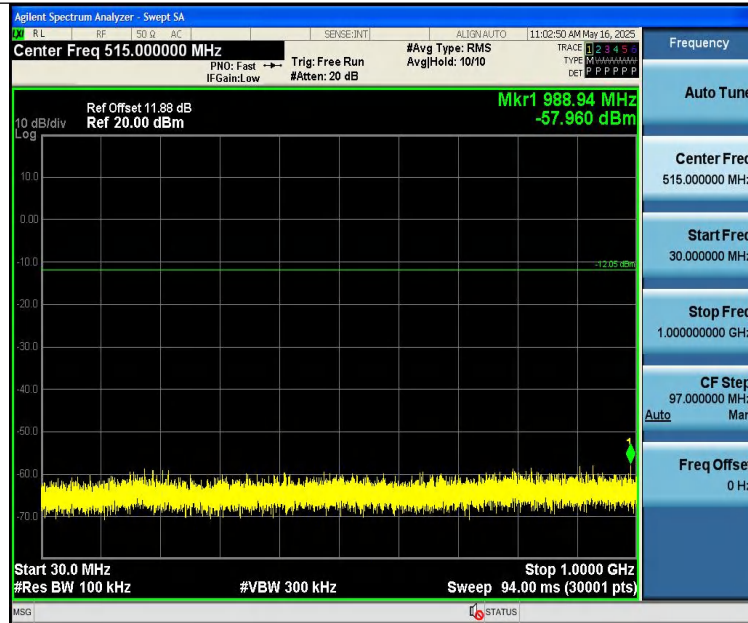
DH5-Ant1-2402-1000~26500-PASS



DH5-Ant1-2441-0~Reference-PASS



DH5-Ant1-2441-30~1000-PASS



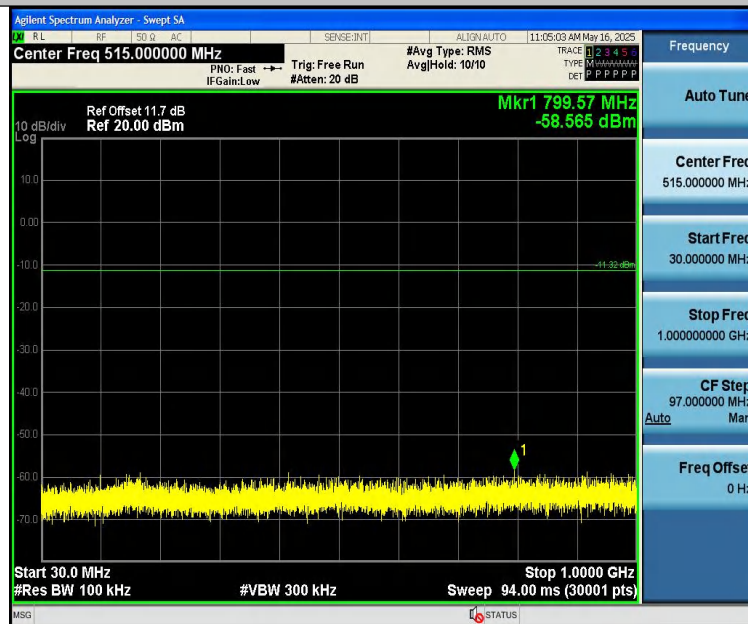
DH5-Ant1-2441-1000~26500-PASS



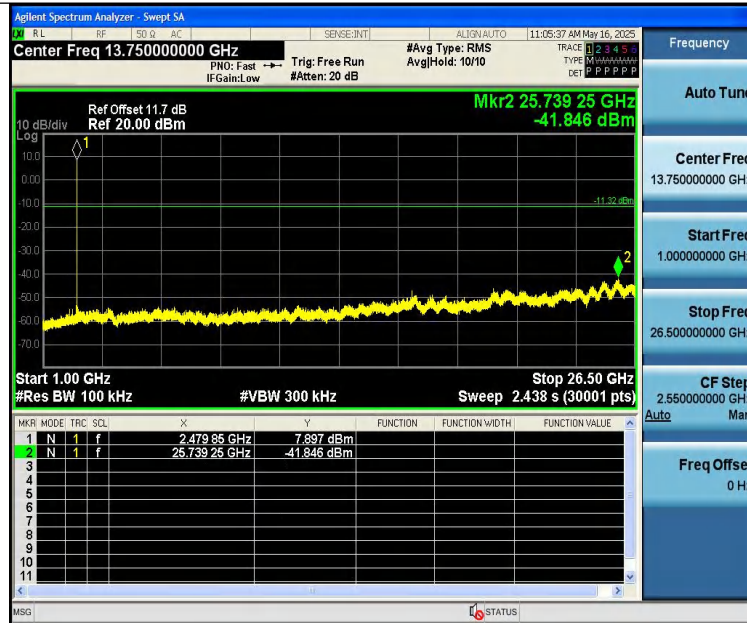
DH5-Ant1-2480-0~Reference-PASS



DH5-Ant1-2480-30~1000-PASS



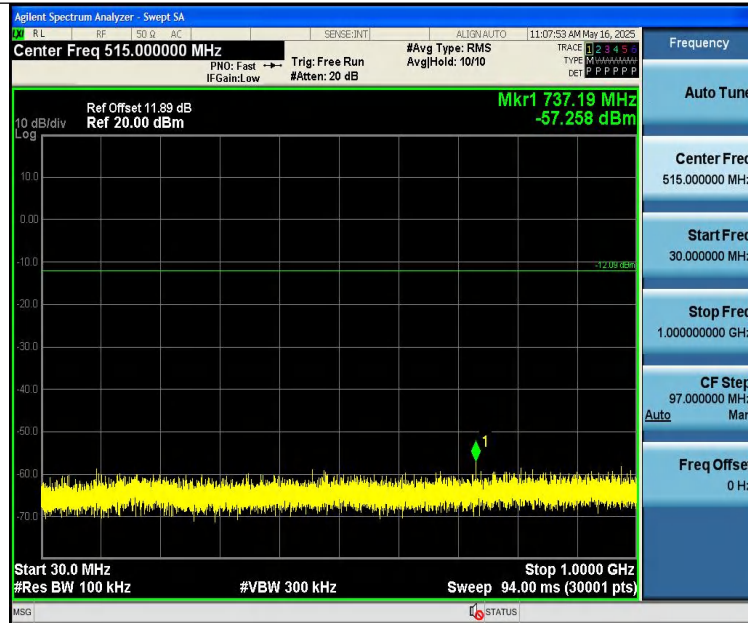
DH5-Ant1-2480-1000~26500-PASS



2DH5-Ant1-2402-0~Reference-PASS



2DH5-Ant1-2402-30~1000-PASS



2DH5-Ant1-2402-1000~26500-PASS



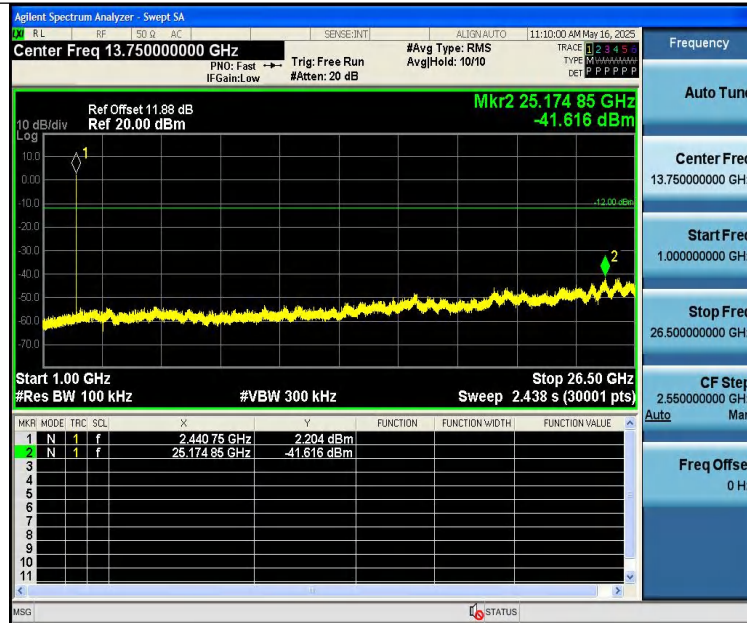
2DH5-Ant1-2441-0~Reference-PASS



2DH5-Ant1-2441-30~1000-PASS



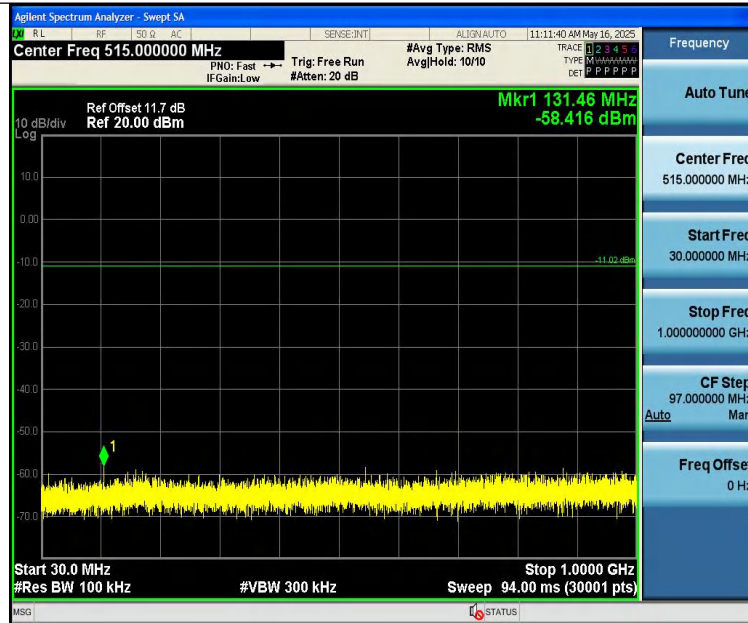
2DH5-Ant1-2441-1000~26500-PASS



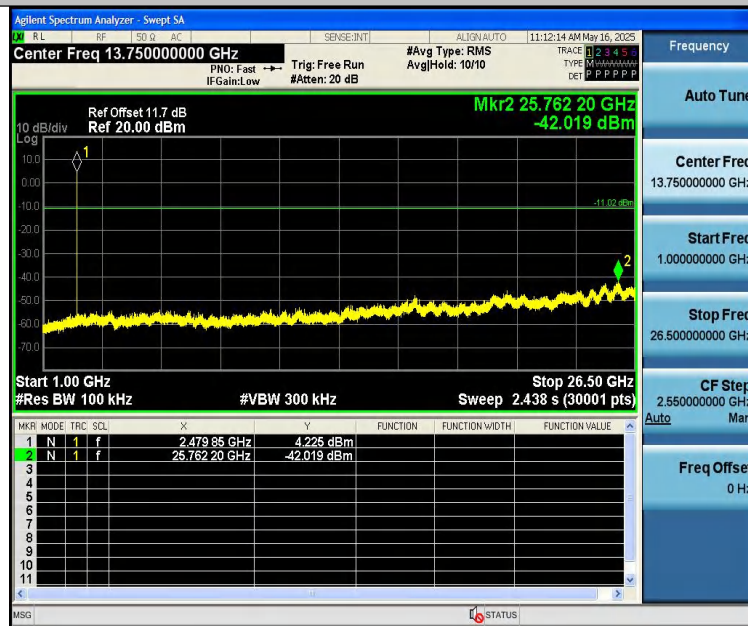
2DH5-Ant1-2480-0~Reference-PASS



2DH5-Ant1-2480-30~1000-PASS



2DH5-Ant1-2480-1000~26500-PASS



3DH5-Ant1-2402-0~Reference-PASS



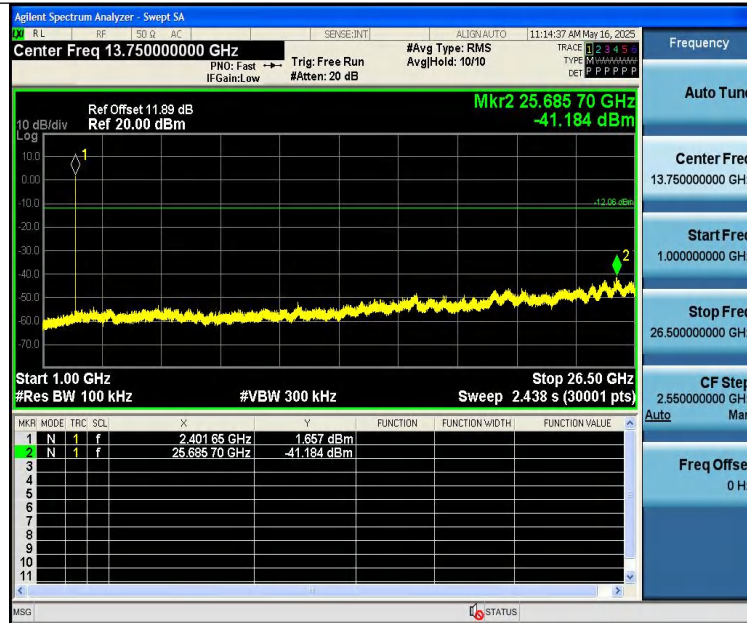
Report No.: PTC25042308101E-FC01



3DH5-Ant1-2402-30~1000-PASS



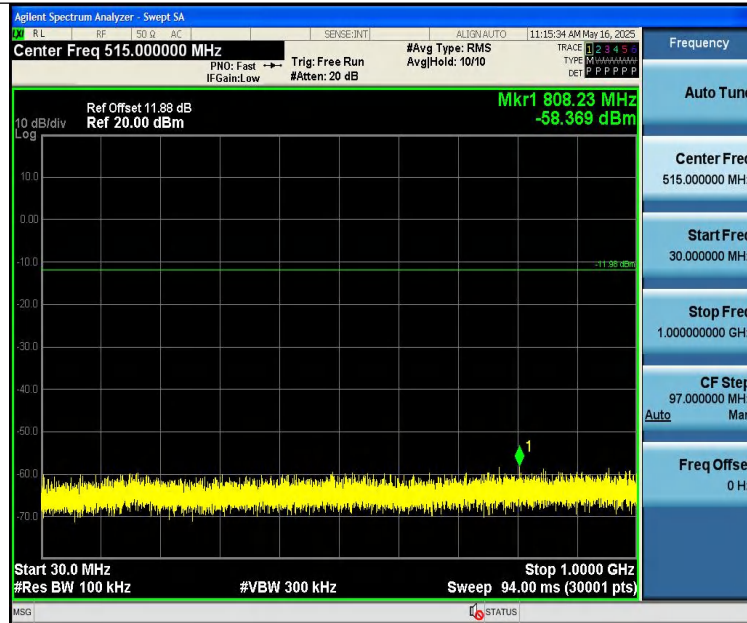
3DH5-Ant1-2402-1000~26500-PASS



3DH5-Ant1-2441-0~Reference-PASS



3DH5-Ant1-2441-30~1000-PASS



3DH5-Ant1-2441-1000~26500-PASS



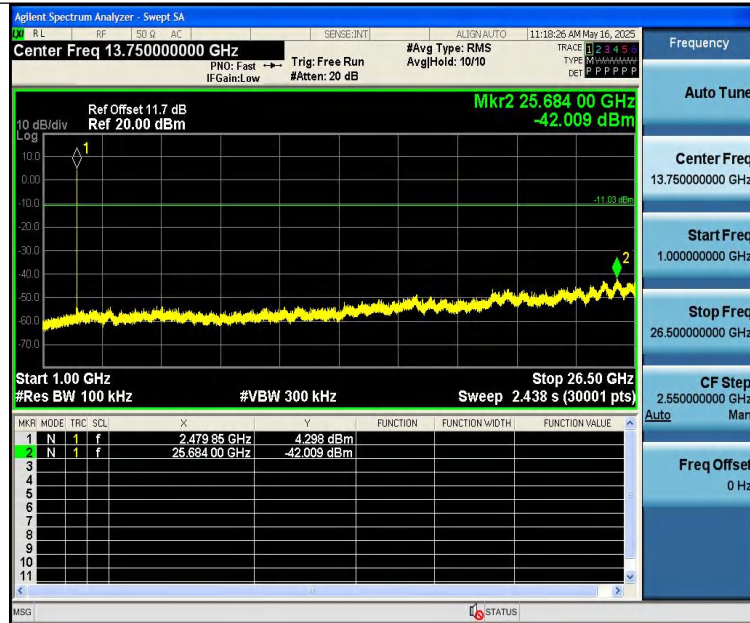
3DH5-Ant1-2480-0~Reference-PASS



3DH5-Ant1-2480-30~1000-PASS



3DH5-Ant1-2480-1000~26500-PASS





14 Antenna Requirement

14.1 Test Standard and Requirement

Test Standard	FCC Part15 Section 15.203 /247(c)
Requirement	<p>1) 15.203 requirement:</p> <p>An intentional radiator shall be designed to ensure that no antenna other than that furnished by the responsible party shall be used with the device. The use of a permanently attached antenna or of an antenna that uses a unique coupling to the intentional radiator, the manufacturer may design the unit so that a broken antenna can be replaced by the user, but the use of a standard antenna jack or electrical connector is prohibited.</p> <p>2) 15.247(c) (1)(i) requirement:</p> <p>Systems operating in the 2400-2483.5 MHz band that is used exclusively for fixed. Point-to-point operations may employ transmitting antennas with directional gain greater than 6dBi provided the maximum conducted output power of the intentional radiator is reduced by 1 dB for every 3 dB that the directional gain of the antenna exceeds 6 dBi.</p>

14.2 Antenna Connected Construction

The antenna is Integrated Antenna which permanently attached, and the best case gain of the antenna is 2.49 dBi. It complies with the standard requirement.

15 APPENDIX I -- TEST SETUP PHOTOGRAPH

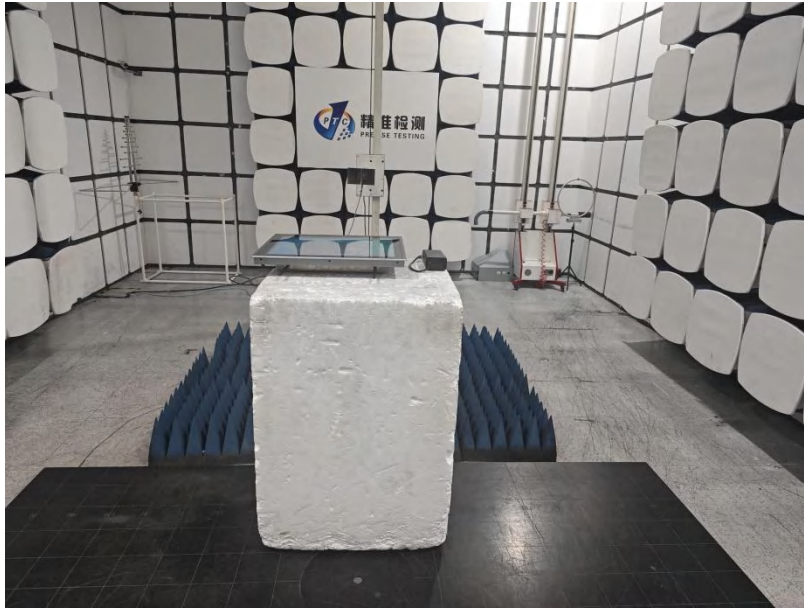
Conducted Emissions



Radiated Emissions
From 30M-1GHz



Above 1GHz

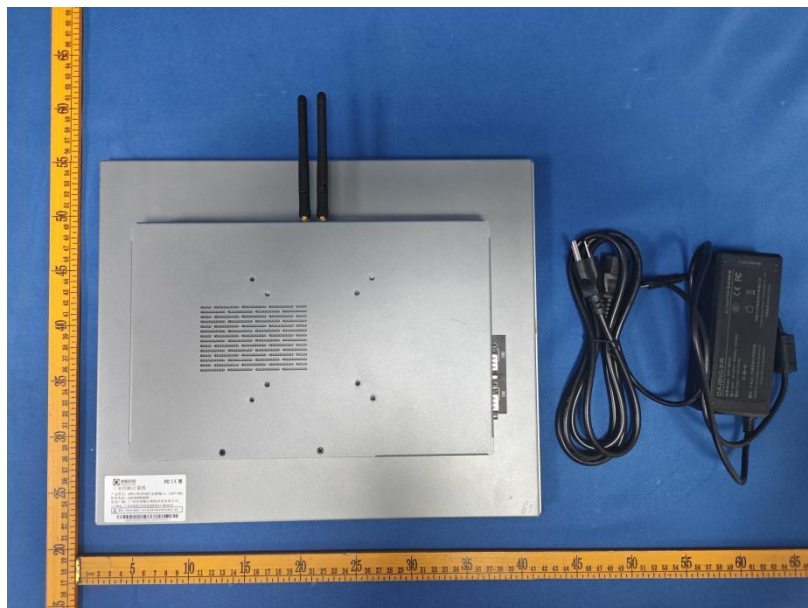


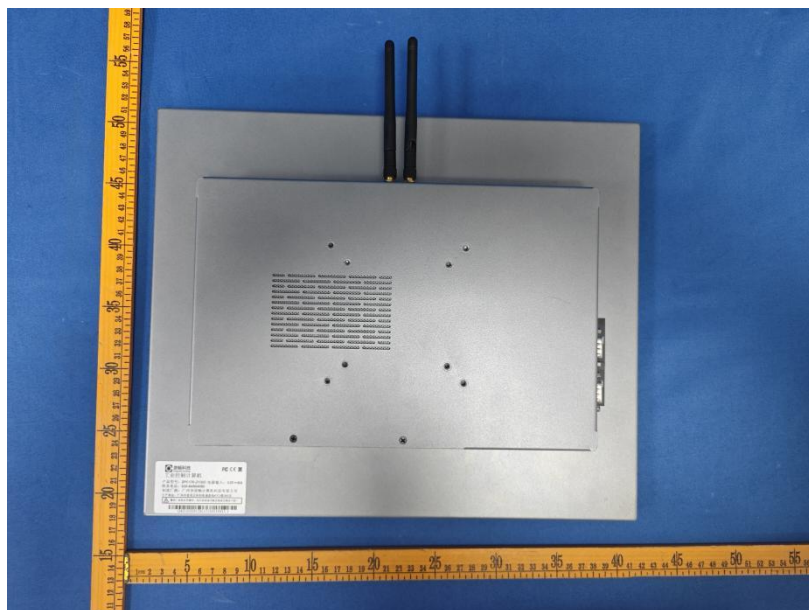
16 APPENDIX II -- EUT PHOTOGRAPH



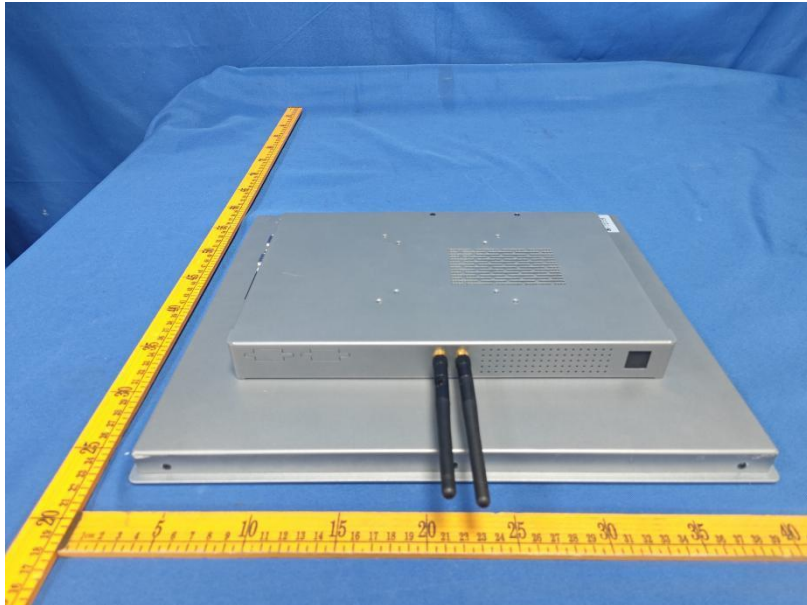


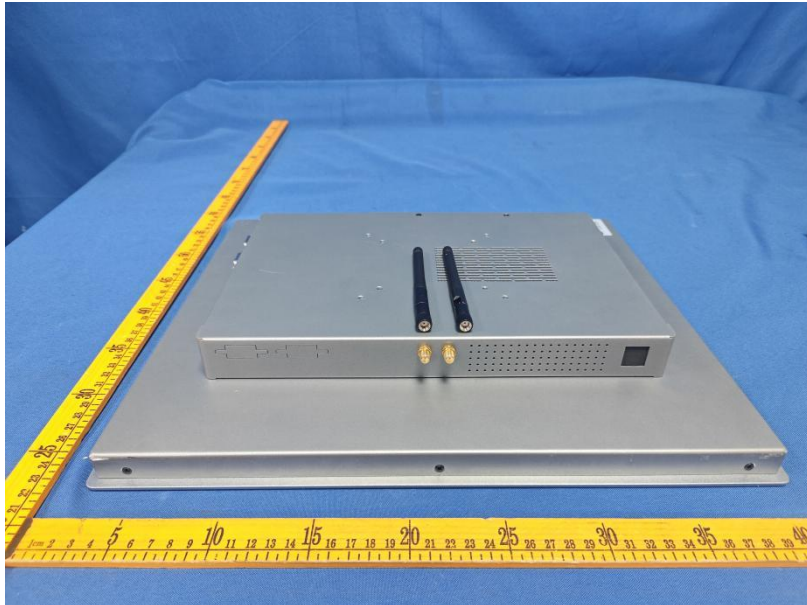


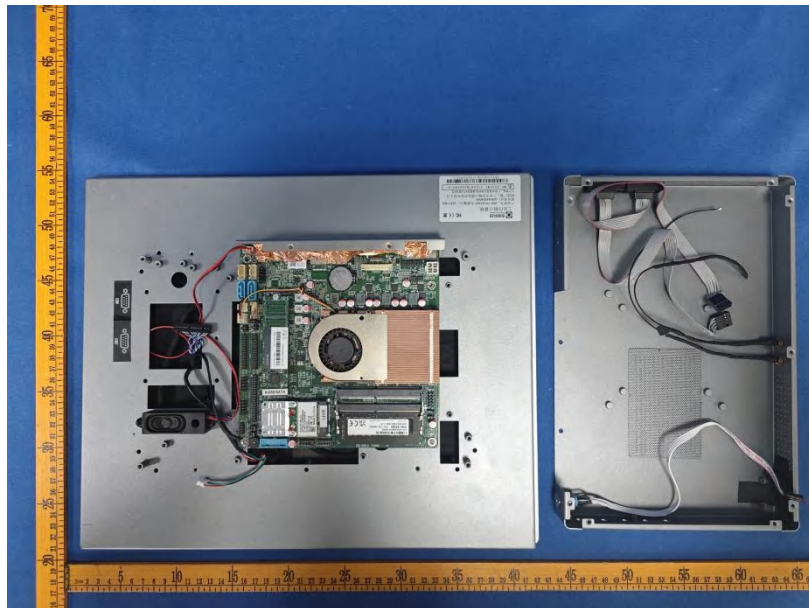


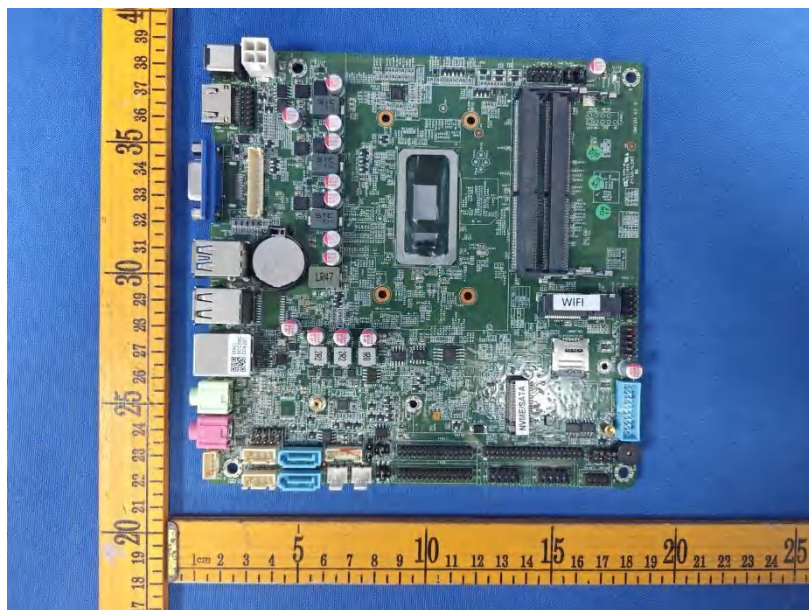


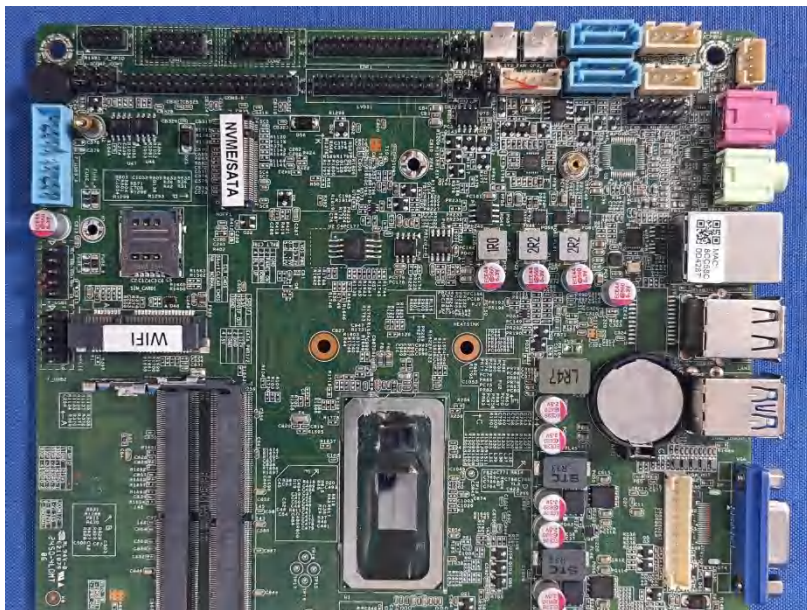
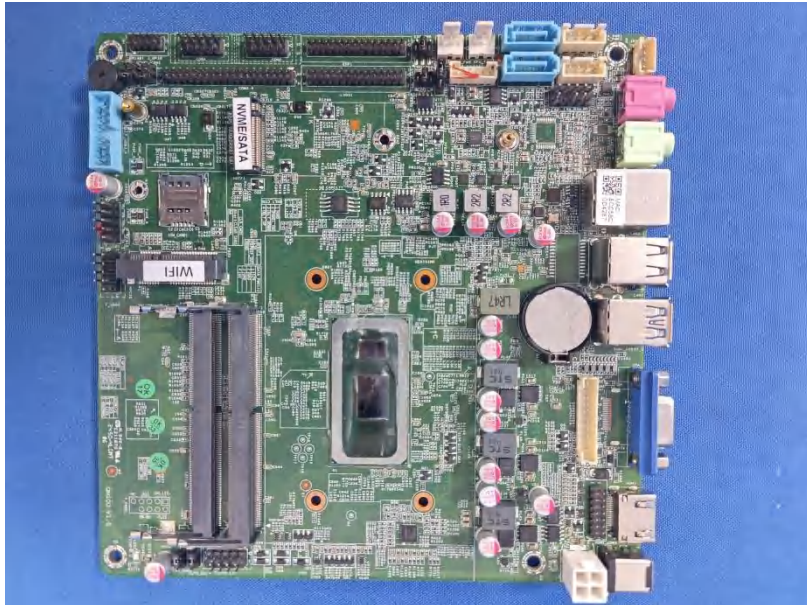


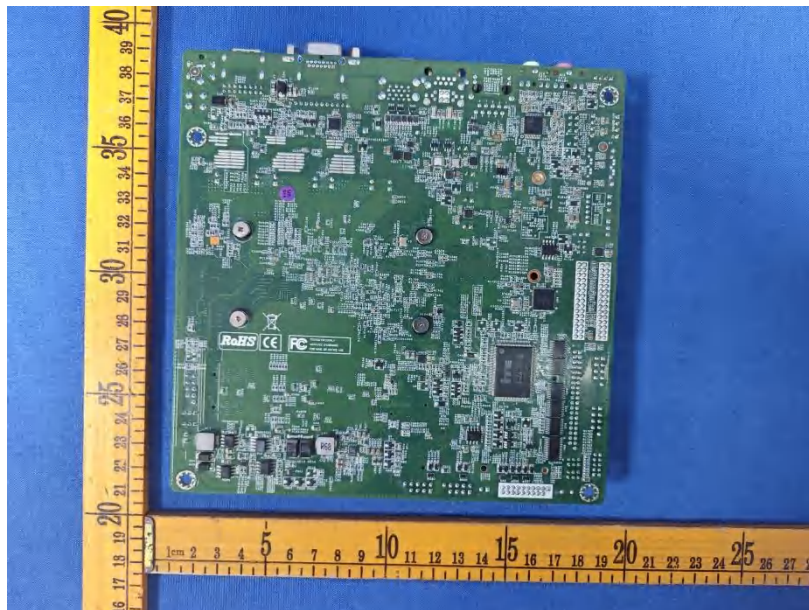
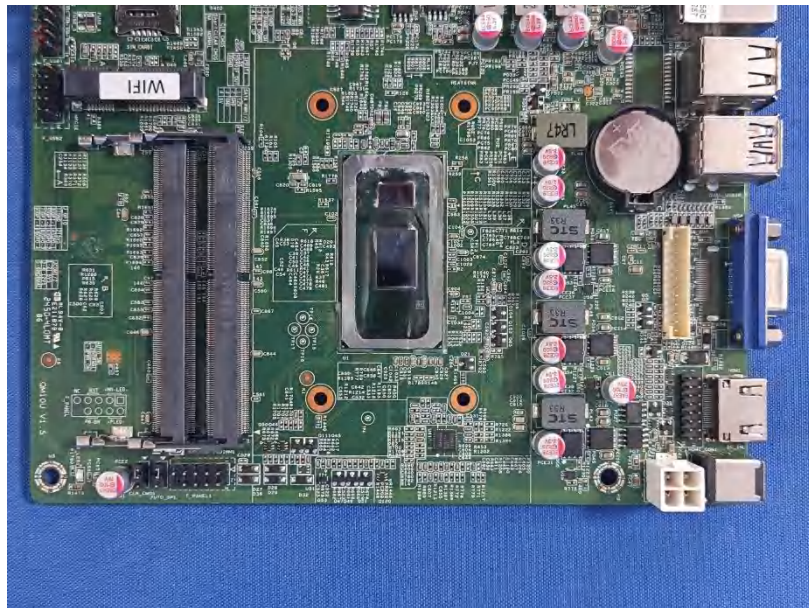




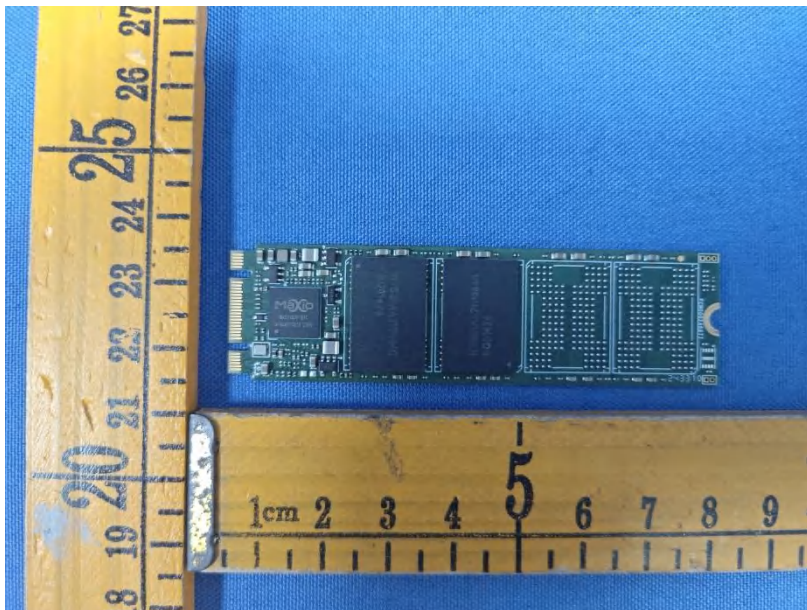
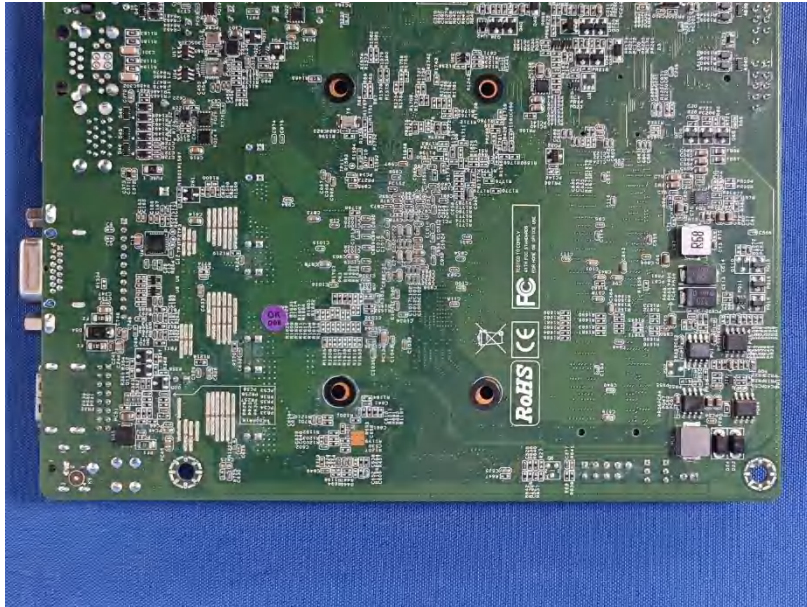


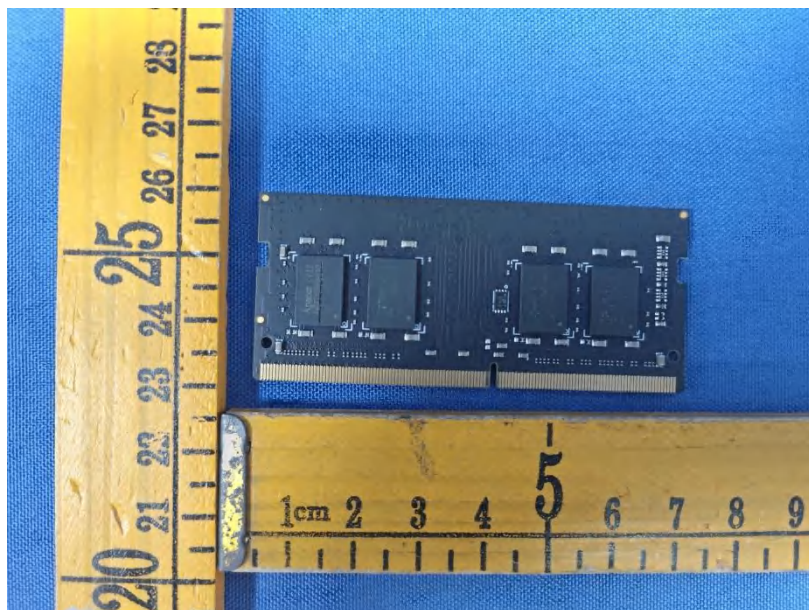
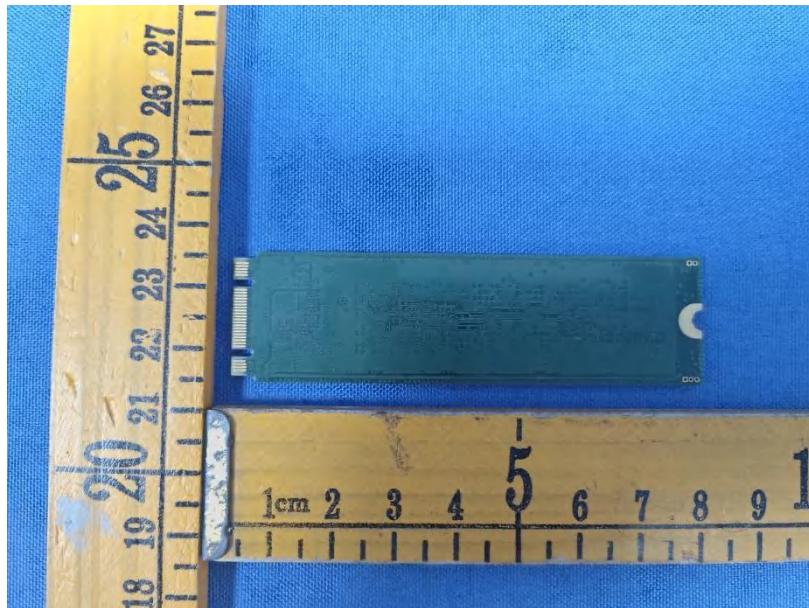


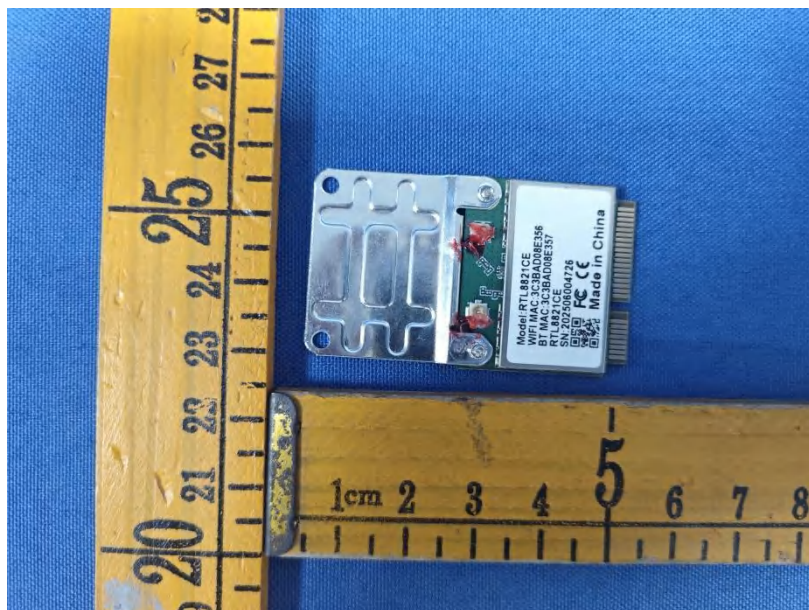
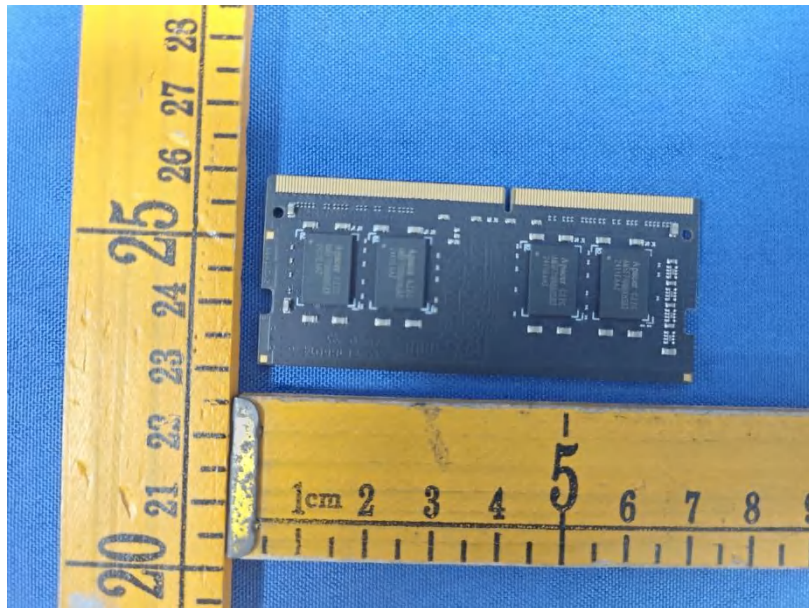


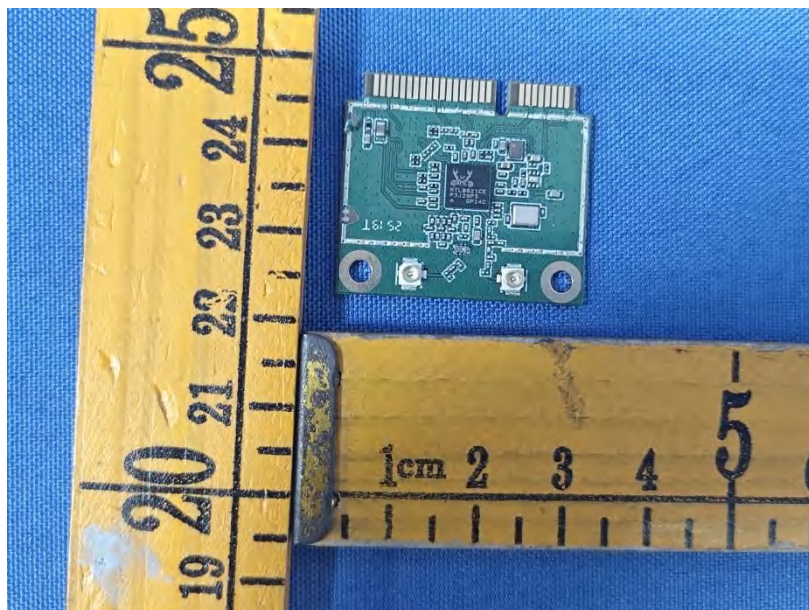
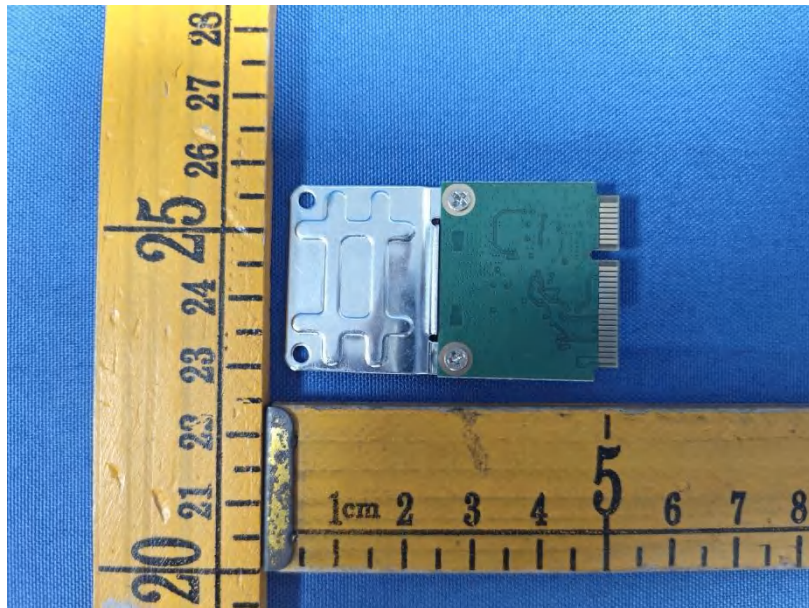


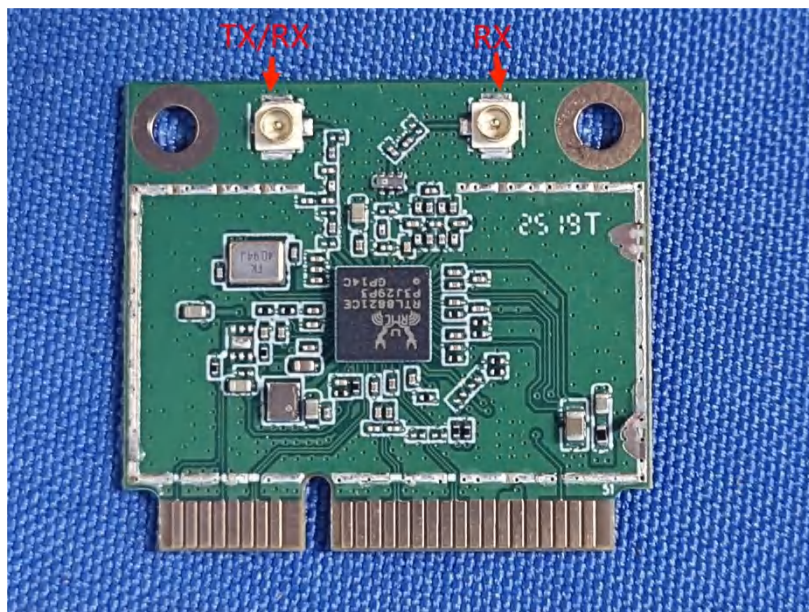
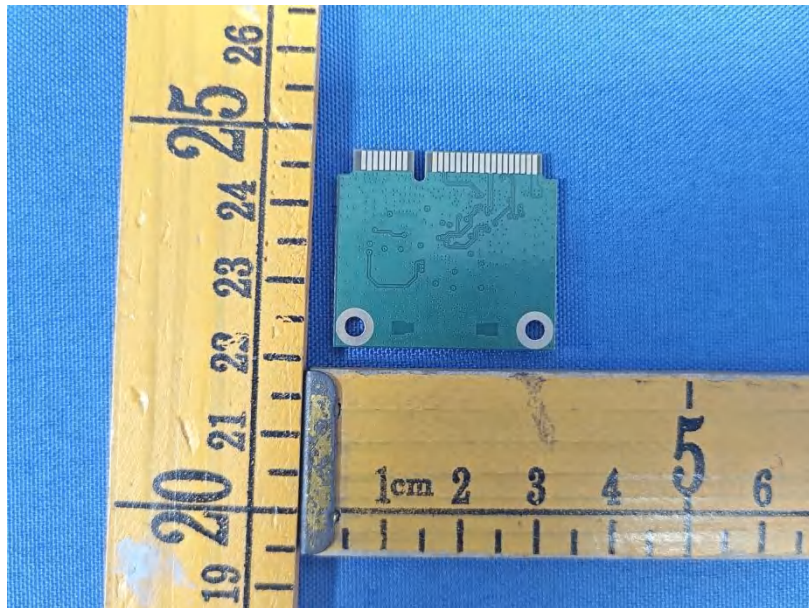


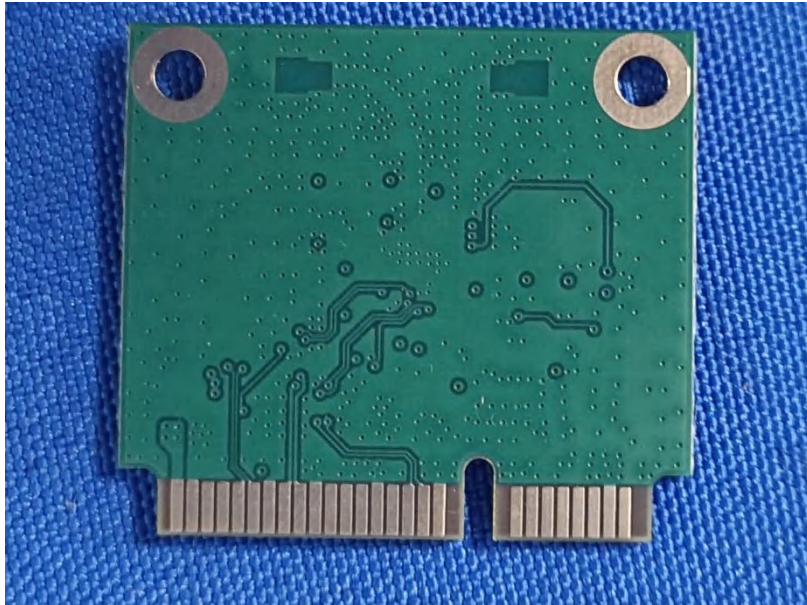


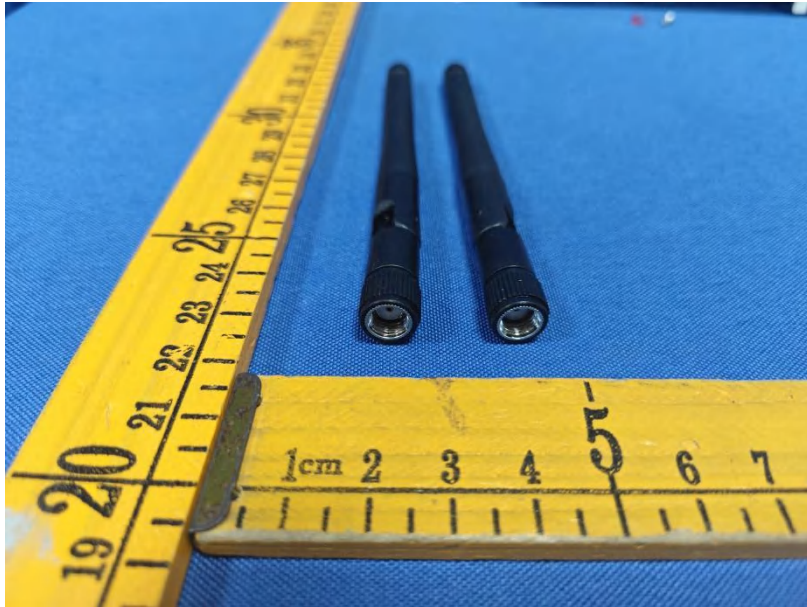












*****THE END REPORT*****