

SPECIFICATION

Shenzhen Feixin Wireless Communication



Shenzhen Feixin Wireless Communication Co., Ltd

923 MHz Spring antenna

Product Datasheet

Customer	Hangzhou Zhifang	Frequency	923MHz
Product Name	923MHZSpring antenna	Version	A1
Customer Part Number		Flying core part number	FX-ZF-923M-TH-253
Material Description	- String0.6mmPhosphorus Copper-Foreign Trade4.75-Number of laps7T;		
RF design	Chen Liang	RF Manager	Jin Yong
Structural design	Xie Kaijun	Structural Manager	Chen Xiaohua
Technical Director	Andy	day	2025-03-03

Content

1. Product Pictures.....	3
2. Product Parameters.....	3
3. S11Data.....	4
4. Product Structure Diagram.....	6

Shenzhen Company: Changjing Robotics Industrial Park, Guanhu Street, Longhua District, ShenzhenABuilding305room
(Room 305, Building A, Changjing Robotics Industrial Park, Guanhu Subdistrict, Longhua District, Shenzhen City.)

<http://www.flxant.com>

<http://www.fly-core.com>

1. Product Pictures



2. Product Parameters

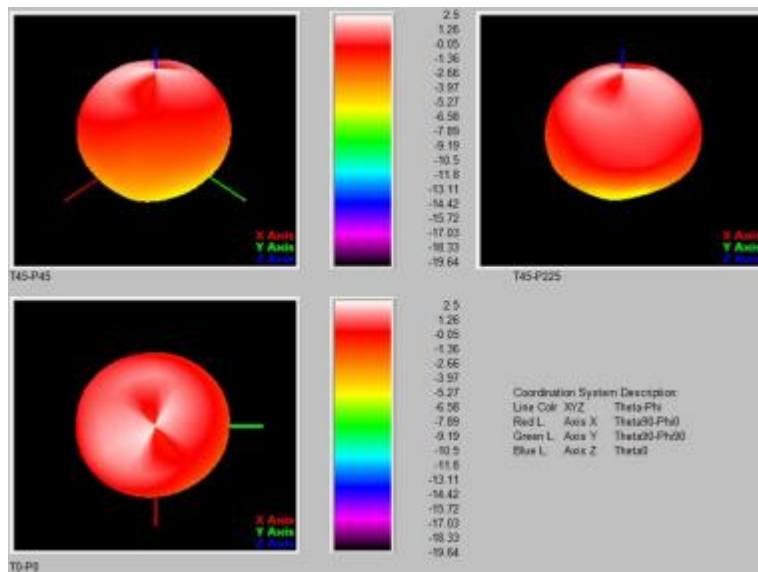
Product test parameters			
Product Name	923MHZSpring antenna	Product Model	FX-ZF-923M-TH- 25 3
Electrical performance indicators(Electrical Specifications)			
Frequency range	923MHz	Polarization	vertical
Impedance	50 Ω	Radiation direction	Omnidirectional
VSWR)	≤ 2.0	Power	50W
Gain(Gain)	1.5dBi	Bandwidth	10MHz
Mechanical indicators(Mechanical Specifications)			
Dimensions	13*4.75mm	Radome Color	Phosphorus Copper
Connector	/	Cable Length)	/
Radome Material	Phosphorus Copper		
Working Temperature	-40°C--+85°C	Limit Temperature	-40°C--+85°C

three, S11 (VSWR, Return loss, Smith) Data



(1)Apple Picture

Passive-Freq923.00MHZ



Shenzhen Company: Changjing Robotics Industrial Park, Guanhu Street, Longhua District, Shenzhen A Building 305 Room

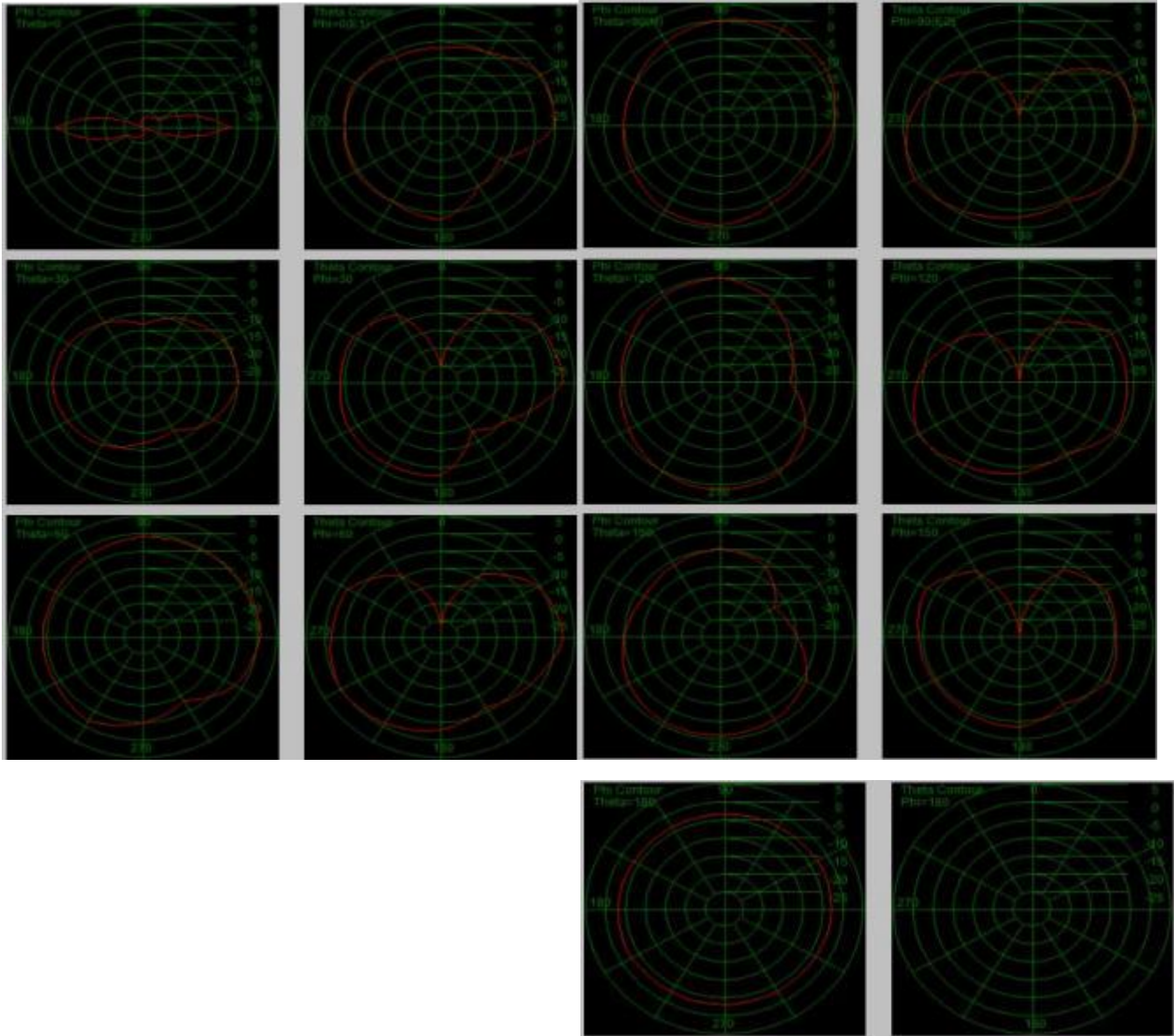
(Room 305, Building A, Changjing Robotics Industrial Park, Guanhu Subdistrict, Longhua District, Shenzhen City.)

<http://www.flxant.com>

<http://www.fly-core.com>

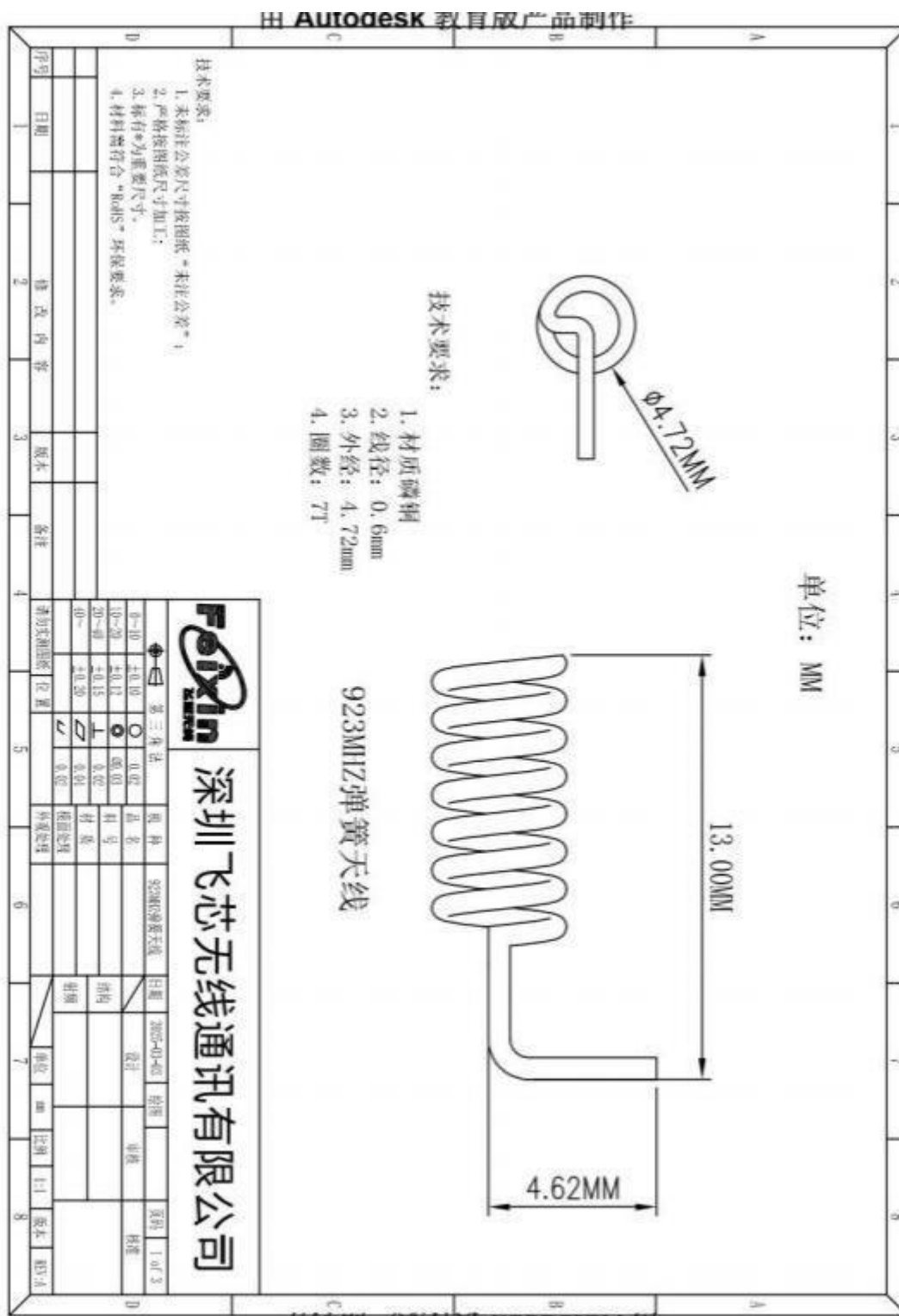
(2) Direction diagram

Passive - Freq 923.00MHZ



Shenzhen Company: Changjing Robotics Industrial Park, Guanhu Street, Longhua District, Shenzhen A Building 305 room
(Room 305, Building A, Changjing Robotics Industrial Park, Guanhu Subdistrict, Longhua District, Shenzhen City.)

4. Structural drawings



Shenzhen Company: Changjing Robotics Industrial Park, Guanhu Street, Longhua District, Shenzhen A Building 305 Room (Room 305, Building A, Changjing Robotics Industrial Park, Guanhu Subdistrict, Longhua District, Shenzhen City.)