

# User Manual

Android system

- 01 Overview
- 02 Product Accessories
- 03 Technical specifications
- 04 Compatible cars and mobile phones
- 05 TF Card Slot Instruction
- 06 Wireless CarPlay/Android Auto Connection
- 07 Network Connection
- 08 Notes
- 09 Contact us
- 10 FCC Warning

## ■ 1. Overview

---

By connecting to the USB port in your car, this product enhances the functionality of the open Android system platform. It enables CarPlay and Android Auto to be used wirelessly, making your journey more enjoyable. It also supports Bluetooth phone, TF card, youtube/Netflix/Tiktok/online streaming media playback.

For the initial connection, the AI BOX will need to adapt to the car's central control device and resolution. As a result, the AI BOX will restart automatically, which is a normal occurrence.

In order to maintain the smoothness of the system, we do not recommend you to download the app

## ■ 2. Product Accessories

---



Wireless  
Adapter



USB to  
Type-C



Type-C  
Adapter

(The picture is for reference only, the final object shall prevail)

### 3. Technical specifications

Category	Name	Parameters
Hardware parameters	Platform	Quad Cortex-A53
	Dominant frequency	1500 MHz
	RAM	DDR3 2GB
	Internal storage space	16GB
	Bluetooth chip	RTL8733
	WiFi	RTL8733
System	Android	12.0
	Wireless carplay and android auto	Built-in
	WiFi	Built-in 802.11 a/n 5G
	WiFi hotspot	Default ( to get to the Internet)
	APP update online	Default
	Bluetooth	Default (support HFP, HSP, FTP, OBE OPP, SPP, A2DP)
	Music player	yes
Surrounding	Voltage	5V
	Operating temperature	-20°C-65°C
Input output Port	USB	Type-c

## ■ 4. Compatible cars and mobile phones

---

1. Applicable Models: This product is designed for original cars equipped with wired CarPlay/Android Auto.
2. iPhone: This product supports iPhone models 6 and above running iOS 10 and above.
3. Android Phone: This product supports Android devices running version 10.0 and above, with some devices requiring version 11.0 and above.

## ■ 5. TF Card Slot Instruction

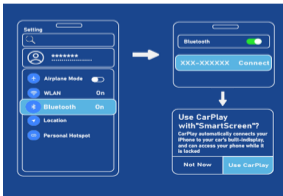
---

TF Card Slot: The product has an expandable TF card slot that supports storage capacity of up to 512GB.

\* When inserting the TF card, please ensure that the metal face is facing downwards.

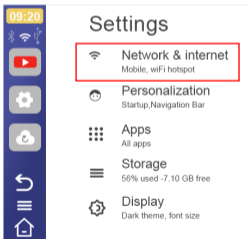
## 6. Wireless CarPlay/Android Connection

1. Plug the AI box into your car's USB/Type-C
2. Click on the "carplay/androidAuto" icon to enter the connection interface.
3. Please turn on your iPhone/Android phone's Bluetooth and WiFi.
4. Next, search for the Bluetooth name (smartbox – \*\*\*\*\*) in your phone's Bluetooth list which is displayed on the in-car screen, and click it to pair the two devices.
5. Wait for the connection to be successfully established and the wireless CarPlay/Android Auto function will be activated!

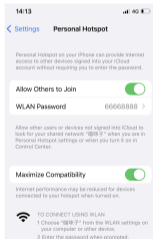


## 7. Network Connection

1. Make sure to disconnect CarPlay/Android Auto.
2. Go to Box Settings–Network/Internet Settings.
3. Search and connect the internet WIFI of your router/cat  
(Attention! You can't connect to the box's WIFI!)
4. If there is no available internet WIFI near you, you can connect to a mobile hotspot (Not cell phone WIFI)
5. Click on YouTube, etc., to watch videos  
(you may need to log in to your account)



WiFi settings



personal hotspot

## ■ 8. Notes

---

1. Phone and version requirements: Android 11 and above.Apple 6 and above, iOS10 and above.
2. The original car multimedia must come with wired CarPlay.

### **1. Frequently Asked Questions**

1. Why doesn't the indicator light of the product turn off automatically when the car is turned off?

This product does not have a battery,the exact time the lights go out is determined by the Multimedia USB data port, the lights out time is different for each car.

### **2. Why can't I always connect?**

- a. Turn on the WIFI, Bluetooth and Carplay switches at the same time.
- b. The car multimedia must support wired Carplay function;
- c. Whether the product indicator light is on;
- d. Whether the product is connected to the multimedia data interface.

### **3. Can the product be paired with more than one iphone?**

Yes, if you want to change the iphone, you need to turn off the Bluetooth and WIFI function switch of the used iphone.



#### **4. Can't it reconnect automatically?**

The product can only connect to the last paired device, and you can't turn off the WIFI and Bluetooth switch.

#### **5. No sound when you call?**

You can select the sound output mode as CarPlay/Auto mode in the iPhone call page, some cars need to set it manually.

#### **6. Sound delay, navigation delay?**

Playing music and navigation use iPhone traffic, if the iPhone signal is not stable, the above problems will occur.

#### **7. Why is the connection suddenly disconnected?**

The product data line has a limiting function, the disconnection is caused by the loosening of the car data port and the data line.

#### **8. Why can't CarPlay/Auto start or the device is incompatible/unrecognized USB?**

- a. Re-unplug the device and restart the multimedia.
- b. Replace the data cable.

#### **9. Upgrade method**

Closed system upgrade method: the product does not support OTA upgrade, please use the TF card upgrade, upgrade method, please contact customer service.

## ■ 9. Contact us

---

When there is a problem with the product, please contact us as soon as possible. Please provide your car model and production year when contacting, and then describe the problem you have encountered. We will provide you with a solution.

Our message response rate is 100%, so you don't have to worry about no one replying to you. The product has undergone strict testing before leaving the factory, and 98% of the problems that occur are related to setting errors. However, damage during transportation can also occur. Regardless of the situation, as long as you contact us, we will reply and serve you. Our services include but are not limited to after-sales installation guidance, product setup and upgrading, exchange, return etc.. It should be noted that due to the time difference, we may not be able to reply to you shortly after you send the questions. If our time difference is not significant, we usually reply to the message within one hour. We are in the UTC+8.

Contact information ↓

①Contact us from historical orders in your purchase history

②Email: [support@reeiio.com](mailto:support@reeiio.com)

③WhatsApp: +86 17727863109 (Due to time difference, video calls need to be scheduled in advance)

## ■ 10. FCC Warning

---

This device complies with Part 15 of the FCC Rules. Operation is subject to the following two conditions:  
(1) This device may not cause harmful interference, and  
(2) this device must accept any interference received, including interference that may cause undesired operation.

NOTE 1: This equipment has been tested and found to comply with the limits for a Class B digital device, pursuant to part 15 of the FCC Rules. These limits are designed to provide reasonable protection against harmful interference in a residential installation. This equipment generates, uses and can radiate radio frequency energy and, if not installed and used in accordance with the instructions, may cause harmful interference to radio communications. However, there is no guarantee that interference will not occur in a particular installation. If this equipment does cause harmful interference to radio or television reception, which can be determined by turning the equipment off and on, the user is encouraged to try to correct the interference by one or more of the following measures:

- Reorient or relocate the receiving antenna.
- Increase the separation between the equipment and receiver.

- Connect the equipment into an outlet on a circuit different from that to which the receiver is connected.
- Consult the dealer or an experienced radio/TV technician for help.

NOTE 2: Any changes or modifications to this unit not expressly approved by the party responsible for compliance could void the user's authority to operate the equipment.

The device has been evaluated to meet general RF exposure requirement. The device can be used in portable exposure condition without restriction.