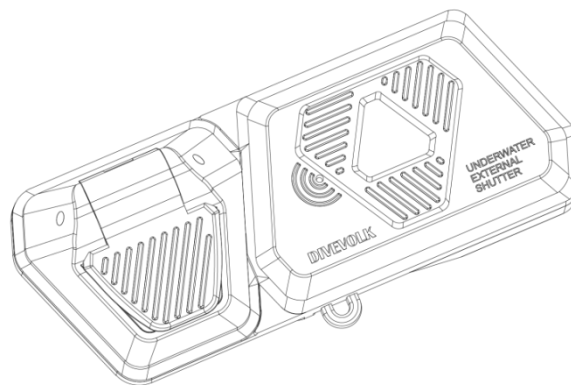


## Underwater External Shutter

EN	Quick Start Guide -----	P01-P06
DE	Schnellstart-Anleitung -----	P07-P14
FR	Guide de démarrage rapide ----	P15-P20
IT	Guida utente -----	P21-P26
ES	Guía de inicio rápido -----	P27-P32
ZH	快速指南 -----	P33-P38
KR	빠른 가이드 -----	P39-P42
JP	クイックガイド -----	P42-P46

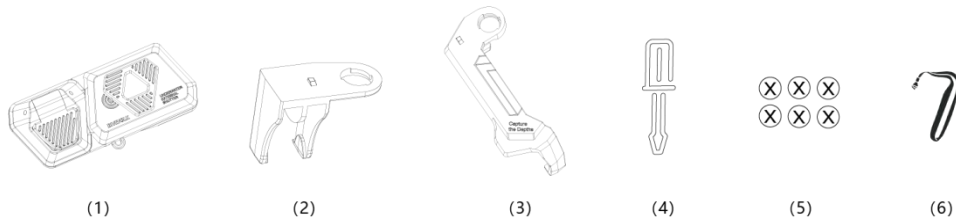


Compatible: Apple ✓ Android ✓

Thank you for purchasing the DIVEVOLK® underwater external shutter, a device designed for diving enthusiasts. Whether you're into free diving, scuba diving, or other water activities, it allows you to easily capture underwater moments and meet your quick photo and video needs. For safe and efficient use, please read this manual carefully to learn about usage methods, maintenance tips and precautions.

### 1.Packaging List

- 1) Underwater external shutter
- 2) Handle buckle
- 3) Waterproof case buckle
- 4) Screwdriver
- 5) Spare screws \*6
- 6) Lanyard



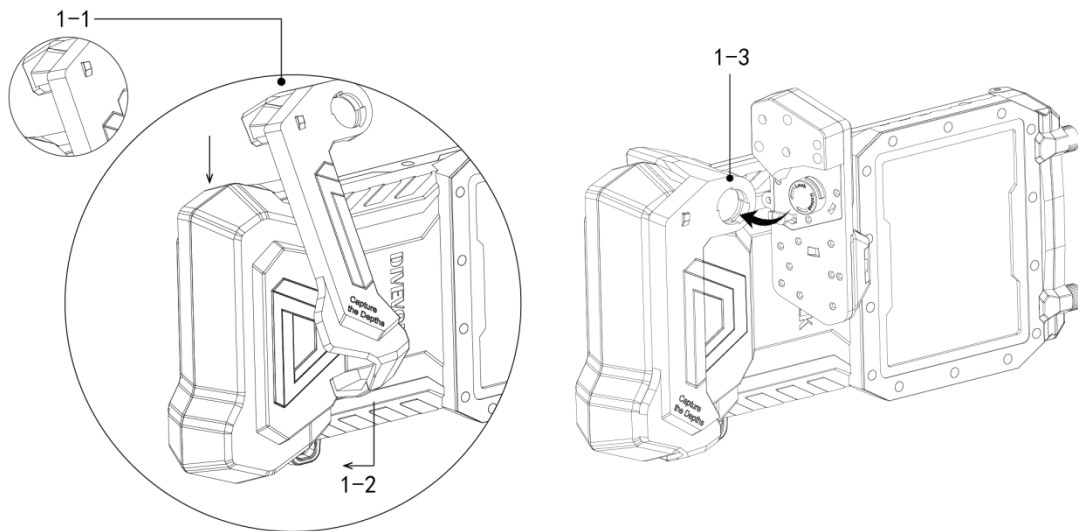
## 2.Specifications

Item	Parameter Description
Model	DAFUES
Weight	78g
Size	92mm*41mm*27mm
Battery specification	CR2032
WaterProof depth	60m/200ft
Button life	100,000 times
Controllable distance	3cm in seawater/10cm in freshwater
Battery endurance	50 hours of standby time
FCC ID	2BOFDDAFUES

## 3.Instructions for Use (Details and Diagrams for Device Installation)

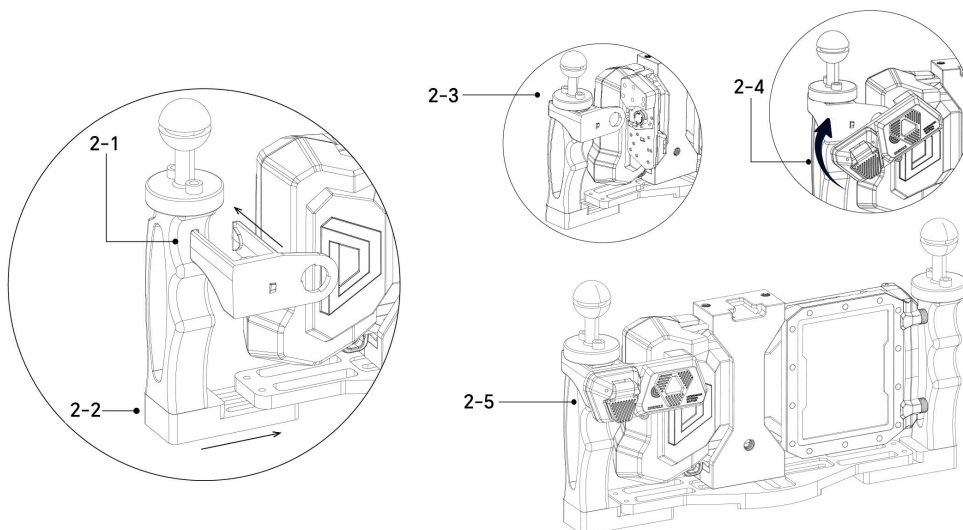
### ① Installation and Removal with Housing

- First, attach the waterproof shell buckle to the upper part of the waterproof shell handle, then snap it into place at the lower end.
- Locate the raised knob on the back of the Bluetooth module and insert it into the corresponding slot on the phone case buckle.
- Then rotate it clockwise until you hear a "click".
- Due to the reverse buckle structure, to uninstall, lift the shutter end of the Bluetooth module slightly and then rotate counterclockwise.
- When removing the waterproof shell buckle, remove the lower part first and then the upper part.



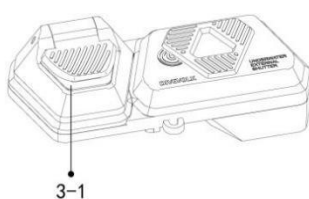
## ② Installation of Handle Buckle (Only Compatible with DIVEVOLK Double Handle)

- Install the handle buckle on the right side of the double handle.
- Locate the raised knob on the back of the Bluetooth module and insert it into the corresponding slot on the handle buckle.
- Then rotate it clockwise until you hear a "click".
- Adjust the screws at the bottom of the double handle inward so that they make contact with the waterproof shell handle, ensuring a secure connection. (Make sure the Bluetooth module touches the back of the phone's waterproof shell)



## ③ Power On/Connect/Use

Long press the shutter button for 5 seconds to turn the device on/off. Wait until you see a flashing blue light. Please refer to Diagram.



④ Open your phone's Bluetooth settings, scroll to the bottom, find the device name (DIVEVOLK-UWST), and pair it.

Once paired, open the camera app. Tap the external shutter button to take a photo; when recording video, tap once to start and again to stop.

#### **4.Installation Diagram**

#### **5. Precautions:**

1. To save power, this product has an auto power-off feature. It will automatically shut down after 15 minutes of inactivity.
2. Ensure the Bluetooth module and buckles are properly installed and the Bluetooth connection is established before entering the water.
3. If the button doesn't respond underwater, check if the Bluetooth connection is normal and whether the blue light on the shutter button is on when pressed.
4. To ensure proper connection when installing with double handles, shorten the distance on the right handle to make sure the Bluetooth module touches the back of the phone's waterproof shell.
5. After use, rinse the device with clean water.

#### **6. Battery Replacement**

1. When replacing the battery after use, shake off any water from the device first.
  - Place the device upside down, loosen the screws and remove the battery cover. Ensure no water droplets enter the battery compartment during this process.
2. When installing the battery, make sure the positive side is facing up.
3. Before tightening the screws, press the power button to test if the device lights up properly.
4. If you encounter stripped screws, replace them with the spare screws and make sure the battery compartment is securely closed.

#### **7.Indicator Light Status**

1. Blue light flashing rapidly: Common when the device is searching for a paired phone after initial startup.
2. Blue light flashing slowly: The device is in pairing mode.
3. Blue light off, but lights up when button is pressed: The device is paired and ready to take photos or videos when the button is pressed.
4. Blue light very dim: The battery is low and needs to be replaced soon.

## **8.Maintenance and Precautions:**

1. Store the product properly before and after use to avoid impacts from hard objects or collisions with sharp items.
2. Do not clean the device and its accessories with harsh chemicals, cleaners, or strong detergents. Use a clean, dry soft cloth instead.
3. Do not mechanically crush or cut the product. Placing it in low-pressure and high-temperature environments (such as near fire, hot surfaces, or in ovens) may cause explosions or leaks of flammable liquids or gases.
4. The battery provided with this product is CR2032 and is not rechargeable. This product contains small parts such as batteries and screws. Keep them away from children to prevent choking. If any accessories are damaged, contact DIVEVOLK official after-sales service for repair or replacement. Do not repair or replace non-original accessories on your own.

## **9.After-sales Service and Legal Disclaimer**

### **1. After-sales Repair Service**

If you encounter any damage to the device or need repair, contact our after-sales service center promptly. They will provide you with detailed procedures and address information for sending the device back to the factory for professional inspection and repair.

### **2. Warranty Terms**

Within 1 year from the date of purchase, we will provide free repair services for faults caused by material or manufacturing issues (excluding return shipping costs). The following situations are not covered by the warranty:

- Damage caused by (human factors)
- Unauthorized disassembly of the device
- Use of non-genuine accessories
- Faults caused by failure to follow the instructions or improper environment

## **10.FCC Requirement**

Any changes or modifications not expressly approved by the party responsible for compliance could void the user's authority to operate the equipment.

This device complies with Part 15 of the FCC Rules. Operation is subject to the following two conditions:

- (1) this device may not cause harmful interference, and
- (2) this device must accept any interference received, including interference that may cause undesired operation.

This transmitter must not be co-located or operating in conjunction with any other antenna or transmitter.

Note: This equipment has been tested and found to comply with the limits for a Class B digital device, pursuant to Part 15 of the FCC Rules. These limits are designed to provide reasonable protection against harmful interference in a residential installation. This equipment generates, uses, and can radiate radio frequency energy, and if not installed and used in accordance with the instructions, may cause harmful interference to radio communications. However, there is no guarantee that interference will not occur in a particular installation. If this equipment does cause harmful interference to radio or television reception, which can be determined by turning

the equipment off and on, the user is encouraged to try to correct the interference by one or more of the following measures:

- Reorient or relocate the receiving antenna.
- Increase the separation between the equipment and receiver.
- Connect the equipment into an outlet on a circuit different from that to which the receiver is connected.
- Consult the dealer or an experienced radio/TV technician for help.

The device has been evaluated to meet general RF exposure requirement. The device can be used in portable exposure condition without restriction.

#### Manufacturer Information

Divevolk Intelligence Tech Co., Ltd.

Address: 17th Floor, Room 229, No. 91, Qinlang Road, Hengqin New District, Zhuhai City

Contact Number: +86 760 8689 3956

Email: [aftersales@divevolk.com](mailto:aftersales@divevolk.com)

Business Cooperation: [collaboration@divevolk.com](mailto:collaboration@divevolk.com)

Website: [www.divevolk.com](http://www.divevolk.com) / [www.divevolkdiving.com](http://www.divevolkdiving.com)

Made in China

#### Legal Disclaimer

Copyright © Divevolk (Zhuhai) Intelligent Technology Co., Ltd. 2025.

Use of this product must comply with local laws and regulations. It is prohibited for use in dangerous water areas.