

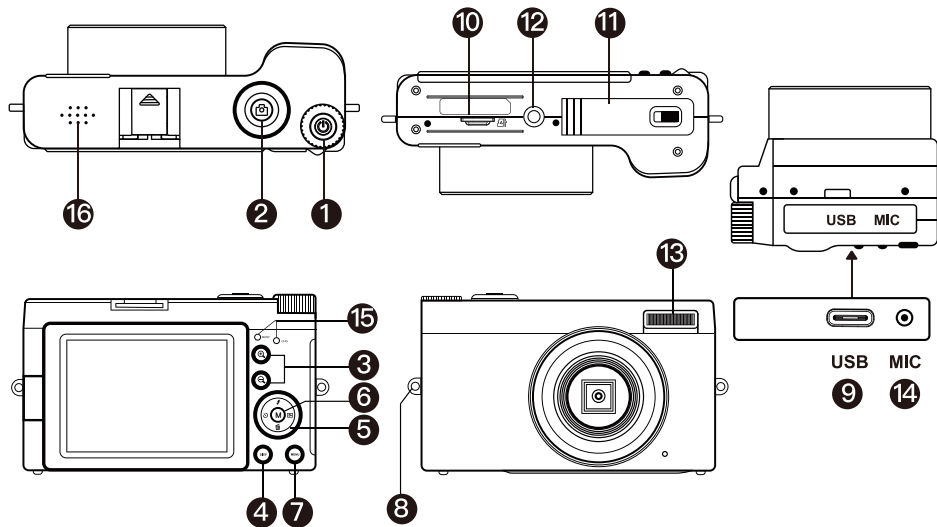
Digital Camera User Manual





RoHS



Introduction of Camera Parts

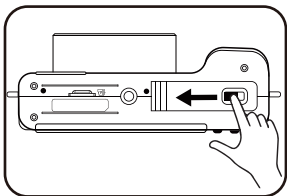


NO	Camera Parts	Introduction
1	Power Button	Power the camera on/ off
2	Shutter Button	In still image mode: Half press to focus, full press to take photo In video mode:Start/end recording In playback mode:Playing video file
3		Electronic zoom On/enlarge photo/increase video playback volume
		Electronic zoom Off/zoom out photo/ decrease video playback volume
4	Mode Button	Switching camera modes: Still image mode/ video recording mode/ playback mode/ camera system setup)

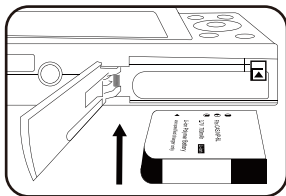
5	Up/Down/ Left/Right	<p>Up key: turn on or off fill light / menu selection</p> <p>Down key: shortcut delete key/ menu selection</p> <p>Left button: timer selfie button (in still image mode, press it to set the timer photo countdown time 2s, 5s or 10s) / menu selection</p> <p>Right key: In still image mode, continuous shooting button (press this button to take 3 photos in a row) / menu selection.</p>
6	OK Button	Confirm selection button/ pause or resume recording (video recording mode)
7	Menu Button	Enter or exit menu settings.
8	Hook	Attachable camera strap.

9	USB Type-C	Type-C
10	Micro SD Card Slot	Install Micro SD card
11	Battery Cover	Install battery
12	Tripod mount	1/4 standard screw hole
13	LED Fill light	LED fill light
14	MIC Port	Recording Voice-Connect the microphone cable (We recommend using our factory-manufactured microphones)
15	Indicator Light	The blue light indicates that the camera is working The red indicator light indicates that the camera is charging The red light goes out when fully charged
16	Speaker	Play sound

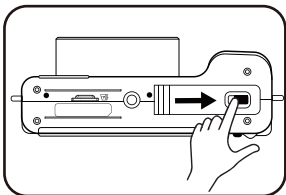
How to insert and remove the battery



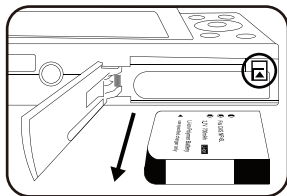
1. Open the battery cover



2. Insert the battery and keep pressing until the battery is locked by the battery lock.



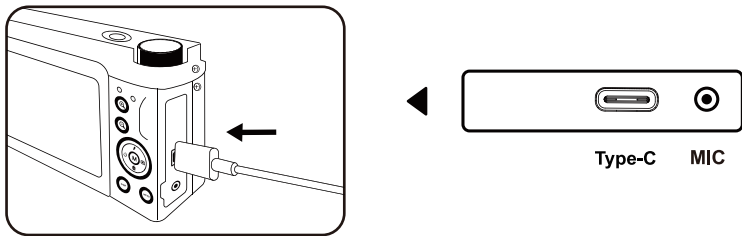
3. Close the battery cover



4. If you want to remove the battery please push the battery lock lever and remove the battery

How to charge the camera

1.Please use the Type-C cable included in the package to charge the camera.



2.When the camera indicator light is red, it means the camera is charging.

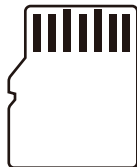
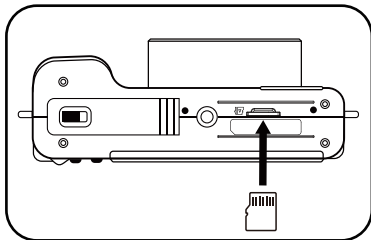
3. When the camera light goes out, it means the camera is fully charged.

4.If the red light flashes quickly while charging, the camera has no battery installed or the battery is not in place.

5.Please note: For the first time, please use the camera after fully charged.

How to Insert and remove Micro SD Card

1.As shown by the illustration, Please insert the card, keep pressing until the Micro SD Card is locked, you will hear a "click" sound.



Micro SD Card

2. Please caution: The camera supports 4–256 Gb Micro SD card , Class10 is recommended, we do not recommend using U3 level card.
3. When the Micro SD card is used for the first time, please format it in the camera.
4. Please insert the Micro SD card , when the camera turned off then turn it on.

How to format the Micro SD card

1. In the still image mode, press the "Mode" button 3 times to enter the system setting interface and select the "Format" option.
2. Press "OK" button to confirm formatting.
3. Press the mode button again to exit the system settings page.



TF

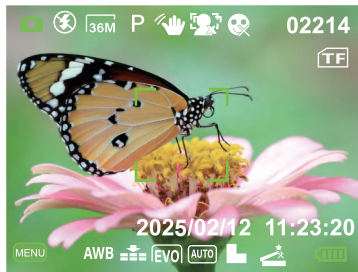
Introduction of still image mode

How to take still image

1. Please make sure the camera is in still image mode
(The camera defaults to still image mode when turned on).
2. Press the shutter button halfway down to focus, the focus frame is yellow at this time; When the image is in focus, The focus frame in the screen will turn green.
3. Press the shutter button fully down to shoot an image.



In focus



Focus to complete

How to play back and delete still image that have been taken

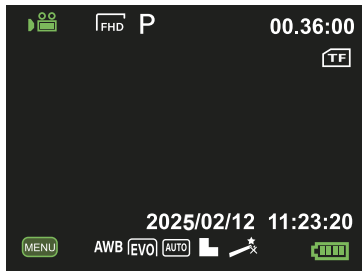
1. Press the mode button 2 times in the still image mode to enter the playback mode.
2. Select an image by pressing Left and right keys.
3. If you want to delete the photo, please press MENU button to delete when you are playing back the picture.
4. After viewing the photos, please press the mode button twice to exit the playback mode.

Special Effect Props

1. In Photo Mode, briefly press the OK button to activate the Special Effect Props mode.
2. Use the left/right buttons to select the previous/next special effect, then briefly press the OK button to confirm the selected effect.
3. Half-pressing the shutter button locks the prop, enabling stable composition for special effect photography.
4. Fully press the shutter button to capture an Special Effect photo.
5. To exit the Special Effect Props mode, press the down button once, then press the OK button again.

Note: The Special Effect Props mode's face detection feature only supports detecting and marking a single face. Accurate recognition and effect application are guaranteed when shooting solo.

Introduction to video recording mode



How to shoot video

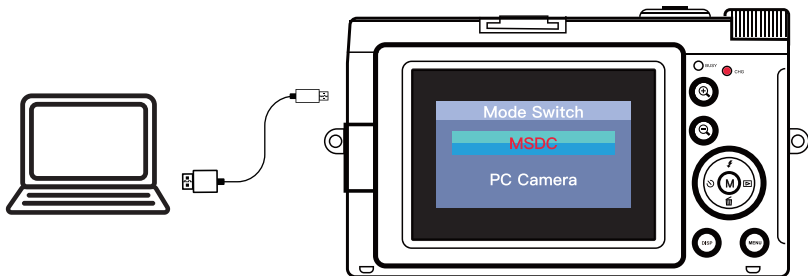
1. Please make sure the camera is in video recording mode
(After turn on camera please press the mode button once to enter video recording mode).
2. Press the shutter button to start/end video recording.
3. Press OK button to pause/resume video recording.

How to play back and delete recorded videos

1. Please press the MODE button once to enter playback mode.
(when the camera is in video recording mode)
2. Select an video by pressing Left and right keys.
3. If you want to delete the video, please press MENU button to delete when you are playing back the video.
4. After viewing the video, please press the MODE button twice to exit the playback mode.

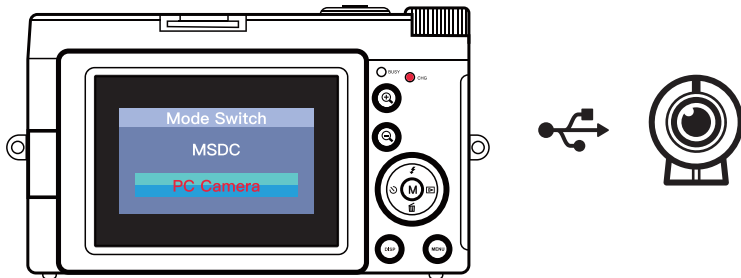
How to download still image/video files to computer

1. Please use the Type-C cable (in the package) to connect the computer, when camera is on.
2. After the connection is completed, a dialog box will pop up randomly on the camera screen.
3. Please select MSDC, then you can download the files from the camera to your computer.
4. After downloading, please remove the cable and the camera will exit MSDC mode.



How to use camera as webcam

1. Please use the Type-C cable (in the package) to connect the computer.
2. After the connection is completed, a dialog box will pop up randomly on the camera screen.
3. Please select “PC camera”, then you can use the camera as webcam on the computer.
4. After using, please remove the cable and the camera will exit webcam mode



Introduction to the still image mode menu settings:

1. Press the “menu” button in still image mode to enter the image menu settings.
2. After the setting is completed, please press the “menu” button to exit the image menu setting.



	Option	Introduction
1	Mode Set	9 shooting scenes for you to choose, the auto mode is the default
2	Resolution	64MP/ 48MP/ 44MP/ 36MP/ 24MP/ 20MP/ 16MP/ 12MP/ 10MP/ etc.
3	Beauty Face	On/ Off Default is off
4	Self Timer	Set the timer Selfie countdown time to 2s, 5s or 10 s Default is off
5	White Balance	Auto mode is recommended Default is Auto
6	Anti-Shake	1.On/ Off 2.Default is on
7	Effect	Photography special effects

Video recording mode menu settings introduction

1. Press the MENU button in video recording mode to enter the video menu settings.
2. After the setting is completed, please press the MENU button to exit the video menu setting.



	Option	Introduction
1	Mode Set	9 shooting scenes for you to choose, the auto mode is the default
2	Movie Size	4K/2.7K/ Full HD 1080P/ HD 720P/ VGA 480P etc.
3	Beauty Face	On/ Off Default is off
4	Exposure	Default is 0
5	White Balance	Auto mode is recommended Default is Auto
6	Effect	There are 20 shooting effects for you to choose from Normal effect is default
7	ISO	1.AUTO/ 100/ 200/ 400 2.Default is AUTO

Introduction to camera system settings

1. Press the mode button 3 times in the still image mode to enter the camera system settings.
2. After the setting is completed, please press the mode button to exit the system setting.



	Option	Introduction
1	Language	Multiple languages for your choice
2	Set Date	1.Via the up/ down/ left/ right buttons to set date and time 2.Please choose whether to display the date watermark on the photo 3.Date watermark is off by default
3	Power Save	The camera will automatically shut down when there is no operation 1Min/ 3Min/ 5Min Default is off
4	Exposure	key sound Default is off
5	Frequency	60Hz/ 50Hz Default is 60Hz
6	Format	You can choose whether to format the Micro SD card or not
7	Default	This function is to reset your camera

Camera Wi-Fi

Connecting the Camera's Wi-Fi

1. Turn on the camera, then long-press the camera's Menu button to activate Wi-Fi mode. The camera's Wi-Fi signal will be enabled. The camera's Wi-Fi name (SSID) will appear as DC102W-XXXXXX, and the Wi-Fi password (WPA2) as XXXXXX.
2. Open your phone's Wi-Fi settings, find the camera's Wi-Fi name, and enter the password to connect.



Camera Wi-Fi mode

Installing the APP

Scan the QR code displayed in the camera's Wi-Fi mode (long-press the Menu button to open Wi-Fi mode). Download the app via App Market or a third-party browser.

Using the APP

1. Once the phone successfully connects to the camera's Wi-Fi, open the APP. It will automatically connect to the camera.
2. The APP can remotely control the camera for photo or video recording. It can also browse photos and videos stored in the camera and download files to your phone or tablet for sharing.

Note: Remote control via APP is limited to fixed-focus photo capture and fixed-focus video recording only; autofocus functionality is not supported. And the camera can only capture objects beyond 1 meter.

Disconnecting the Camera's Wi-Fi

Press the Menu button once to exit the camera's Wi-Fi mode, disconnecting the connection between the camera and the APP.

◆ Product Specifications

Video resolution	4K/ 2.7K/ 1080P FULL HD/ 720P HD/ 480P VGA
Image Resolution	64M/ 48M/ 44M/ 36M/ 24M/ 20M/ 16M/ 12M/ 10M/ 7M–Wide/ 5M/ 3M/ 2M–Wide
Memory Card	Support Micro SD card (4GB to 256 GB Class10 is recommended)
File Format	JPG, AVI
Taking Photos	Single/ Continuous shooting/ 2s timer/ 5s timer/ 10s timer
Electronic zoom	16X
USB Port	Type-C
Display	2.9inch Screen

Battery	Rechargeable Li-Ion Battery
Language	support multi-language
Power Save	Auto power off in 3Min/5Min/10Min
Operating system requirements	Windows XP, Windows Vista, Windows 7, Windows 8, Windows 10, Windows 11 , Mac 10.2

◆ Important Battery Safety Tips

For your better experience with this product, please pay attention to the following safety tips. If the battery pack is mishandled, the battery pack can burst, cause a fire or even chemical burns. Observe the following cautions. Do not disassemble.

- Do not crush and do not expose the battery pack to any shock or force such as hammering, dropping or stepping on it.
- Do not short circuit and do not allow metal objects to come into contact with the battery terminals.
- Do not expose to high temperature above 60°C (140°F) such as in direct sunlight or in a car parked in the sun.
- Do not incinerate or dispose of in fire.
- Do not handle damaged or leaking lithium ion batteries.
- Be sure to charge the battery pack using a genuine battery charger or a device that can charge the battery pack.
- Keep the battery pack out of the reach of small children.
- Keep the battery pack dry.
- Replace only with the same or equivalent type recommended by seller.
- Dispose of used battery packs promptly as described in the instructions.

FCC Warning Statement

Changes or modifications not expressly approved by the party responsible for compliance could void the user's authority to operate the equipment. This equipment has been tested and found to comply with the limits for a Class B digital device, pursuant to Part 15 of the FCC Rules. These limits are designed to provide reasonable protection against harmful interference in a residential installation. This equipment generates uses and can radiate radio frequency energy and, if not installed and used in accordance with the instructions, may cause harmful interference to radio communications. However, there is no guarantee that interference will not occur in a particular installation. If this equipment does cause harmful interference to radio or television reception, which can be determined by turning the equipment off and on, the user is encouraged to try to correct the interference by one or more of the following measures:

- - Reorient or relocate the receiving antenna.
- - Increase the separation between the equipment and receiver.

- - Connect the equipment into an outlet on a circuit different from that to which the receiver is connected.

- - Consult the dealer or an experienced radio/TV technician for help.

This device complies with part 15 of the FCC Rules. Operation is subject to the following two conditions:

(1) This device may not cause harmful interference.

(2) this device must accept any interference received, including interference that may cause undesired operation.

The device has been evaluated to meet general RF exposure requirement. The device can be used in portable exposure condition without restriction.

