

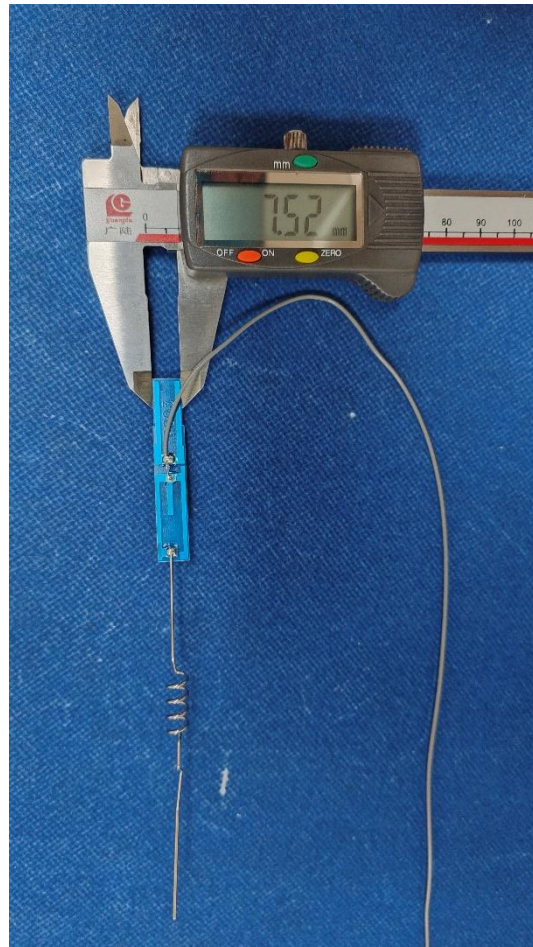
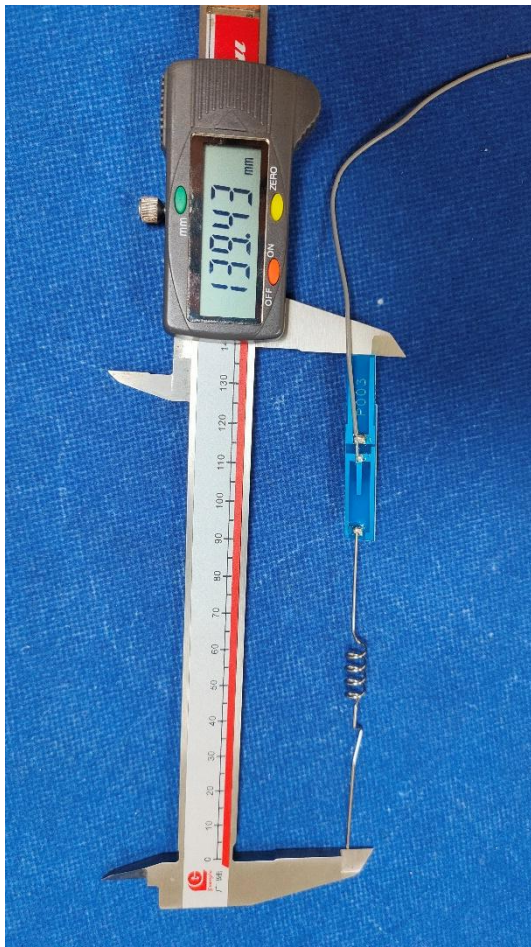
## 1. Antenna Description:

Antenna type	External antenna
Model	TW37-1
Frequency range	2400-2500MHz, 5745MHz-5825MHz
Manufacturer	Maxtop Global Trading Limited
Address	WORKSHOP 60, 3/F, BLOCK A, EAST SUN INDUSTRIAL CENTRE NO. 16 SHING YIP STREET KOWLOON, HONG KONG, China
ANT Peak Gain	2400MHz-2500MHz: 2.02 dBi 5745MHz-5825MHz: 2.10 dBi

## 2. Antenna Photo:

Length:139.43mm

Width:7.52mm



### 3. Test Equipment & Conditions

#### 3.1 Test instrument

VSWR is tested using Agilent E5071B connected to a hand mechanism, and the status is free space.

#### 3.2 Test environment and methods

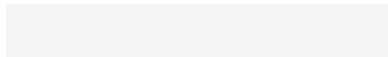
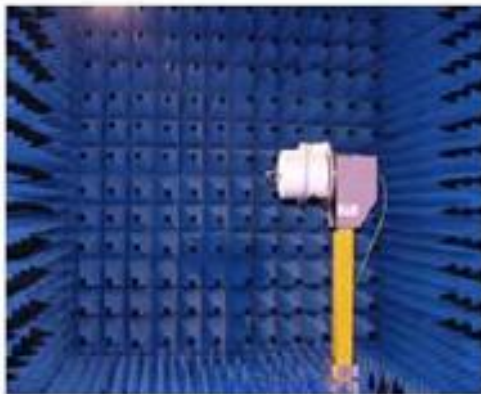
Dark room specifications: ETS-743

TD-SCDMA test equipment: StarPoint SP6010/Agilent 8960

LTE-TDD/FDD-SCDMA test equipment: StarPoint SP8011/CMW500

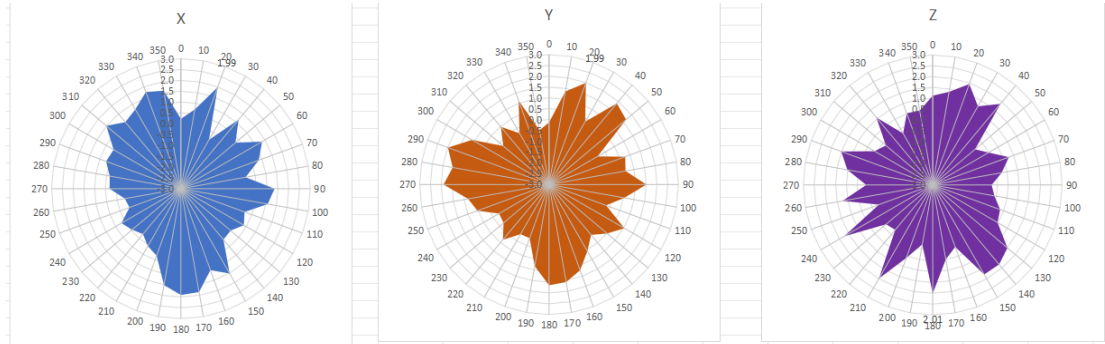
WCDMA/GSM/CDMA test equipment: Agilent 8960

Passive efficiency testing equipment: Agilent Technologies E5071B

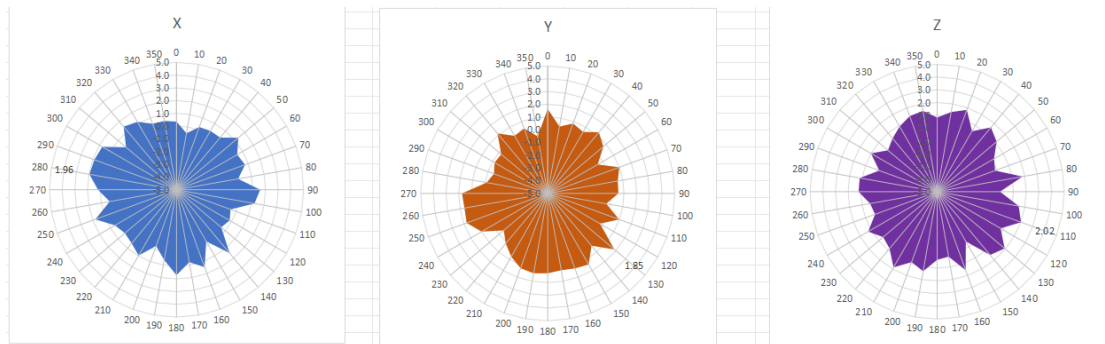


# 4 . Antenna Radiation Pattern

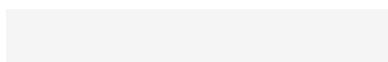
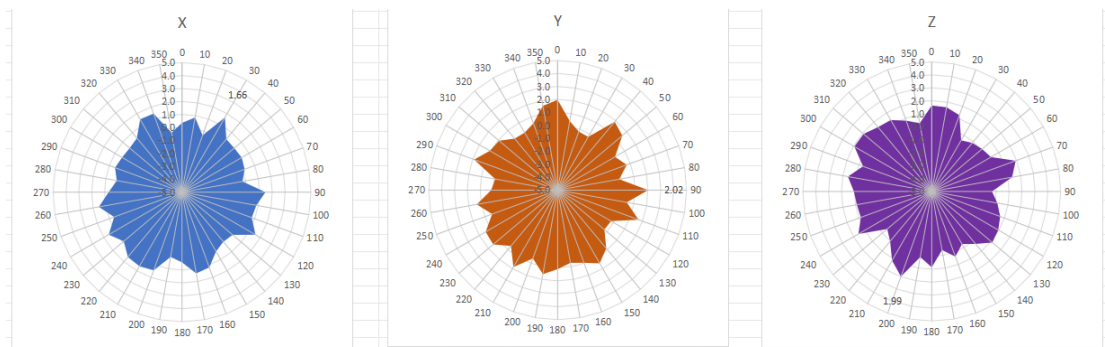
## 2400MHz



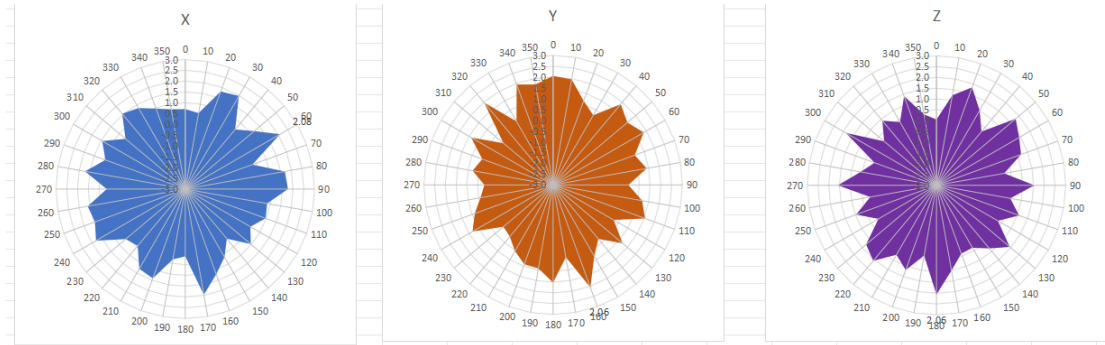
## 2450MHz



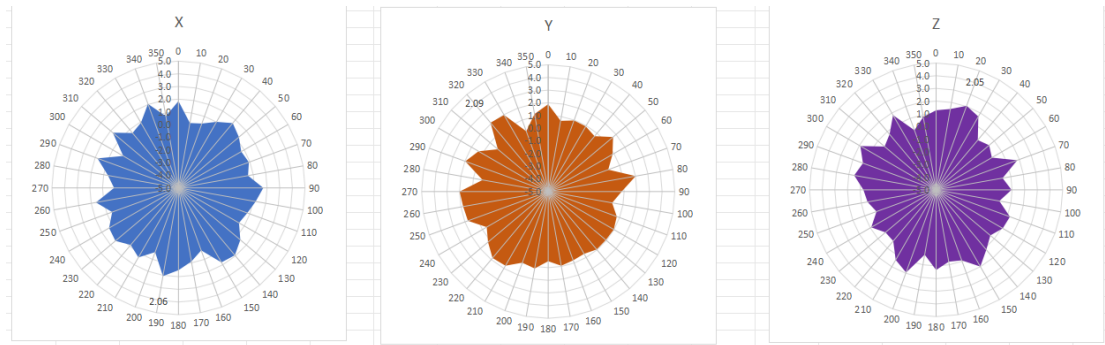
## 2500MHz



# 5745MHz



# 5785MHz



# 5825MHz

