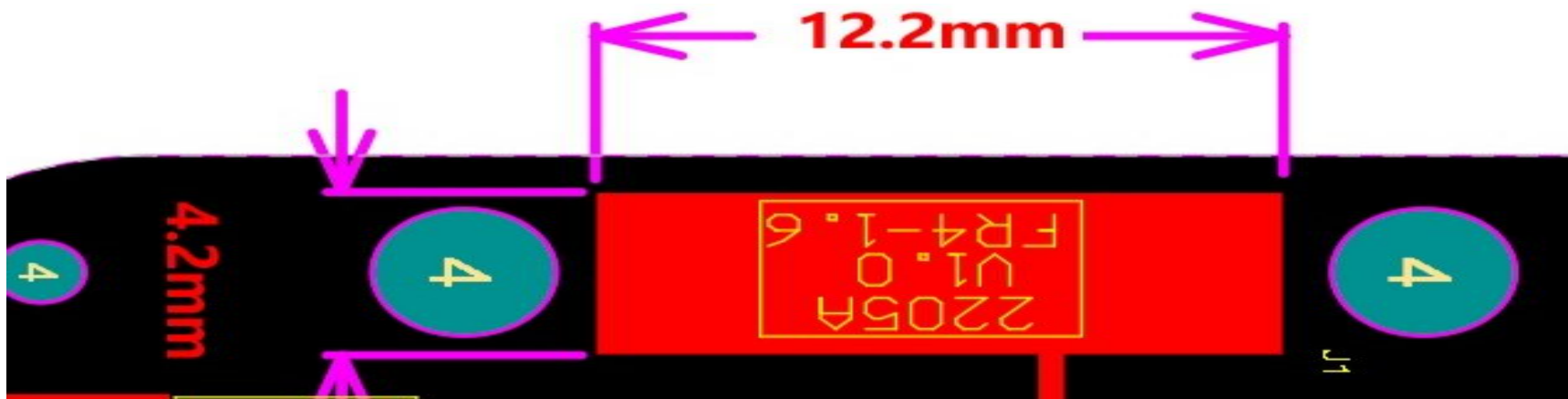


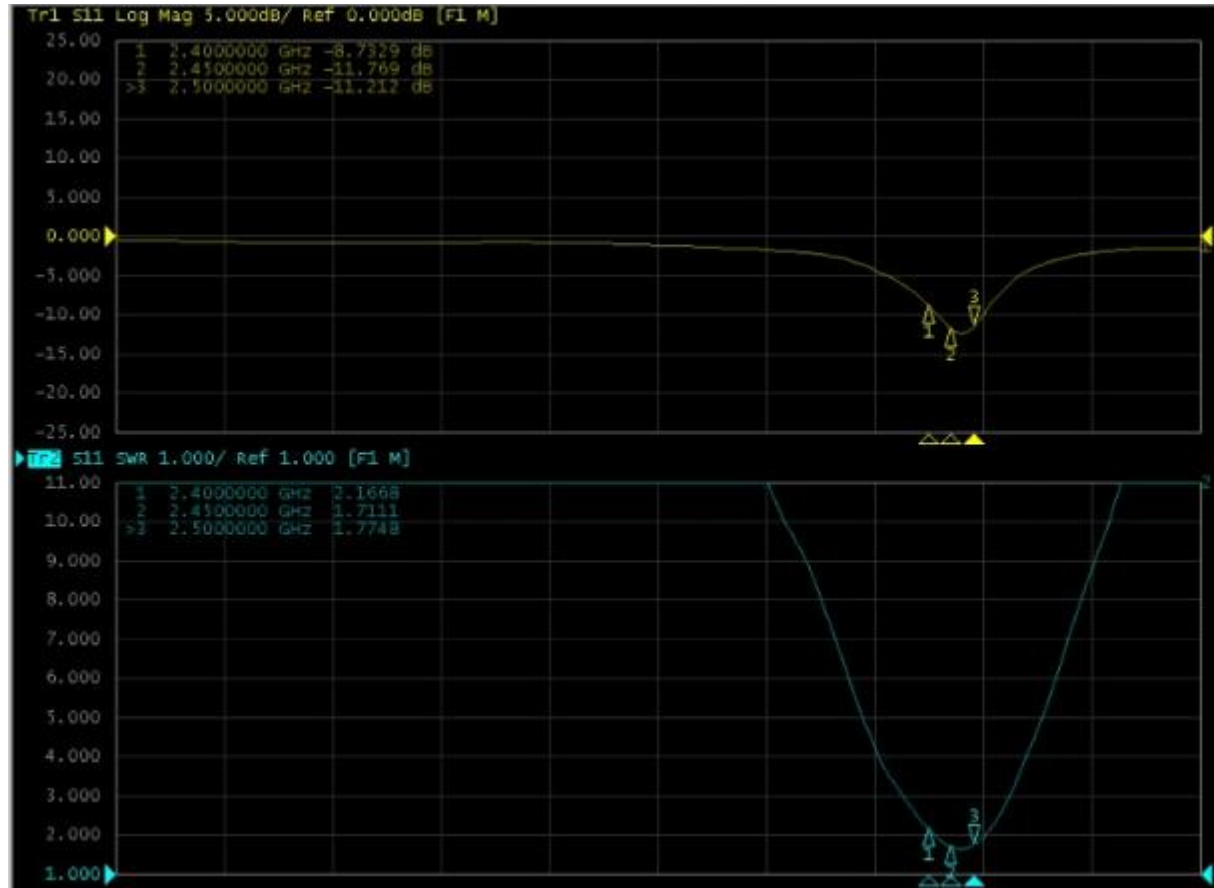
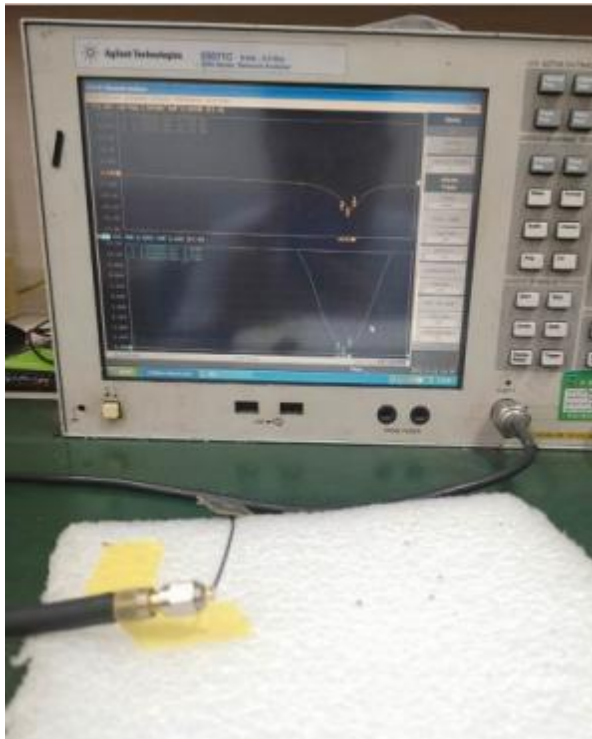
<u>Manufacturer:</u>	Dongguan Weifu Circuit TechnologyCo., Ltd.
<u>Address:</u>	3rd Floor, No. 6, Hebeiling 2nd Road, Guanjingtou Village, Fenggang Town, Dongguan City
<u>Model:</u>	DS-02
<u>Ren Feng P/N:</u>	On-board antennas
<u>WRITED:</u>	Wang Long
<u>DATE:</u>	20250120
<u>VERSIONS:</u>	A

Peak Gain: 2.54dBi

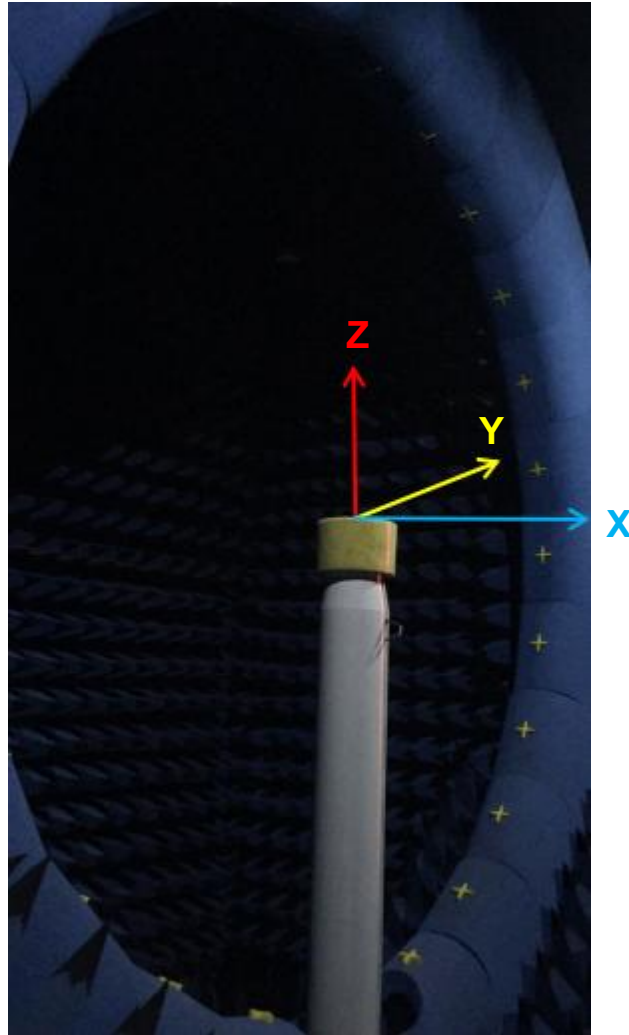


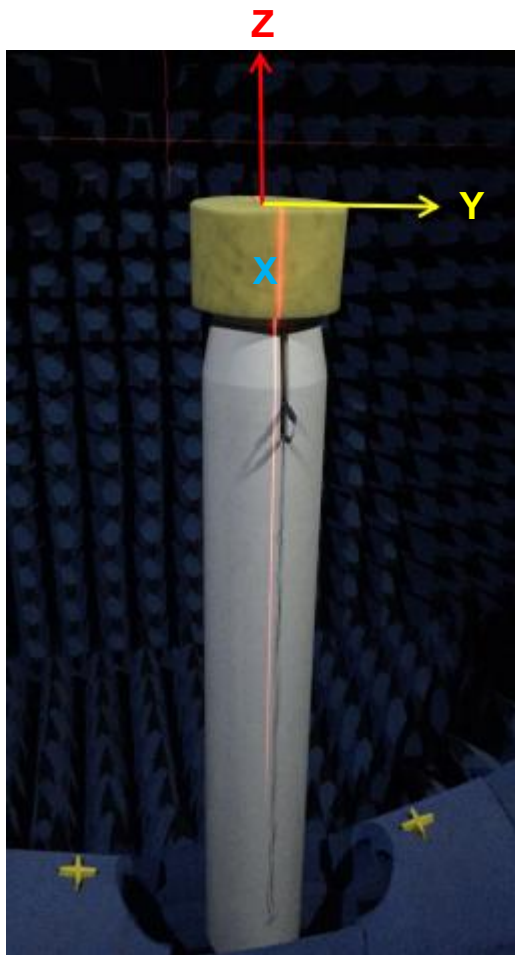
Test system and equipment

	测试项目/Test items	设备/equipment
1: S参数 S parameter	1. 回波损耗 Return loss 2. 驻波比 VSWR	网络分析仪/Network analyzer: A338/A333
2: 耦合功率测试 Active test	1. 发射功率 Transmitting power 2. 接收灵敏度 Receiving sensitivity	综合测试仪/Comprehensive test instrument: Agilent 8960/ CMW500
3: 辐射模式与增益 Radiation mode and gain	1. 辐射模式 Radiation mode 2. 天线增益 Gain	1. 暗室/Shielding room: 7x4x3 m (ETS-3D) 2. 网络分析仪/Network analyzer: HP 8753D

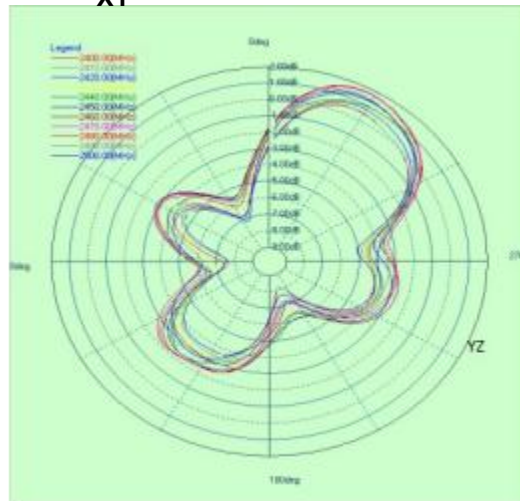


Frequency (MHz)	2400	2450	2500
Return Loss	-8.73	-11.76	-11.21
VSWR	2.16	1.71	1.77

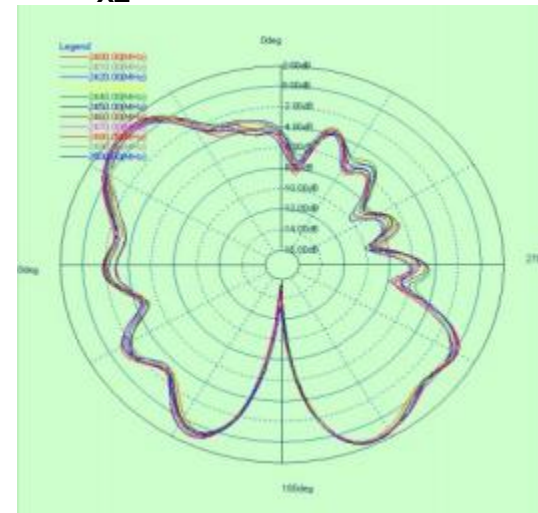




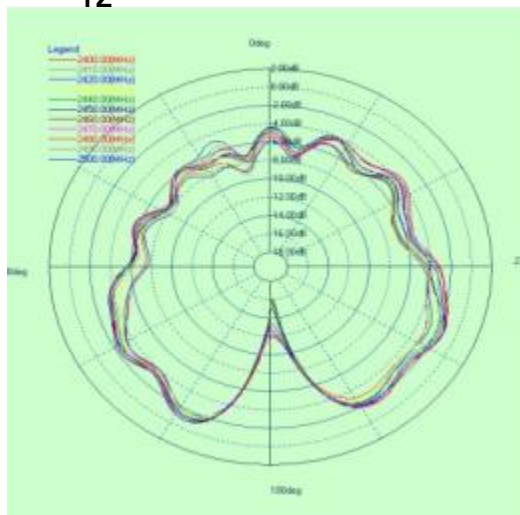
XY



XZ



YZ



Freq. (MHz)	Effi (%)	Gain (dBi)
2400	52.29	1.62
2410	52.17	1.71
2420	53.14	1.93
2430	54.16	1.98
2440	57.62	2.00
2450	59.64	2.17
2460	61.55	2.45
2470	60.64	2.38
2480	62.86	2.54
2490	59.85	2.30
2500	60.41	2.49