

# FCC SAR EVALUATION REPORT

**In accordance with the requirements of  
FCC 47 CFR Part 2(2.1093), ANSI/IEEE C95.1-1992 and  
IEEE Std 1528-2013**

**Product Name :** UniRC 7 Ground Control Station

**Trademark :** N/A

**Model Name :** UniRC 7

**Family Model :** N/A

**Report No. :** S25052108201001

**FCC ID :** 2BN8IUNIRC7

**Prepared for**

Siyi Technology (Shenzhen) Co.,Ltd  
5F, Building 3, Yongqi Science Park, Xixiang Street, Baoan District,  
Shenzhen, Guangdong, China,518102

**Prepared by`**

Shenzhen NTEK Testing Technology Co., Ltd.  
No. 24 Xinfu East Road, Xiangshan Community, Xinqiao Street, Baoan District,  
Shenzhen, Guangdong, People's Republic of China  
Tel. 0755-23200050 Website: <http://www.ntek.org.cn>

## TEST RESULT CERTIFICATION

**Applicant's name** ..... Siyi Technology (Shenzhen) Co.,Ltd  
 Address ..... 5F, Building 3, Yongqi Science Park, Xixiang Street, Baoan District,  
 Shenzhen, Guangdong, China,518102

**Manufacturer's Name** ..... Siyi Technology (Shenzhen) Co.,Ltd  
 Address ..... 5F, Building 3, Yongqi Science Park, Xixiang Street, Baoan District,  
 Shenzhen, Guangdong, China,518102

**Product description**  
 Product name..... UniRC 7 Ground Control Station  
 Trademark ..... N/A  
 Model Name ..... UniRC 7  
 Family Model..... N/A  
 FCC 47 CFR Part 2(2.1093)

**Standards**..... ANSI/IEEE C95.1-1992  
 IEEE Std 1528-2013  
 Published RF exposure KDB procedures

This device described above has been tested by Shenzhen NTEK. In accordance with the measurement methods and procedures specified in IEEE Std 1528-2013 and KDB 865664 D01. Testing has shown that this device is capable of compliance with localized specific absorption rate (SAR) specified in FCC 47 CFR Part 2(2.1093) and ANSI/IEEE C95.1-1992. The test results in this report apply only to the tested sample of the stated device/equipment. Other similar device/equipment will not necessarily produce the same results due to production tolerance and measurement uncertainties.

This report shall not be reproduced except in full, without the written approval of Shenzhen NTEK, this document may be altered or revised by Shenzhen NTEK, personal only, and shall be noted in the revision of the document.

Test Sample Number ..... S250521082001

**Date of Test**  
 Date (s) of performance of tests ..... May. 24, 2025~Jun. 14, 2025  
 Date of Issue ..... Jun. 26, 2025  
 Test Result ..... **Pass**

Prepared By : <u>Owen Xiao</u> Owen Xiao (Project Engineer)	Reviewed By : <u>Aaron Cheng</u> Aaron Cheng (Supervisor)	Approved By : <u>Alex Li</u> Alex Li (Manager)
---	---	--

※ ※ Revision History ※ ※

REV.	DESCRIPTION	ISSUED DATE	REMARK
Rev.1.0	Initial Test Report Release	Jun. 26, 2025	Owen Xiao

## TABLE OF CONTENTS

1. General Information .....	6
1.1. RF exposure limits .....	6
1.2. Statement of Compliance .....	7
1.3. EUT Description .....	7
1.4. Test specification(s) .....	9
1.5. Ambient Condition.....	9
Facilities .....	9
1.5.1. Laboratory Accreditations And Listings.....	9
2. SAR Measurement System .....	10
2.1. SATIMO SAR Measurement Set-up Diagram .....	10
2.2. Robot .....	11
2.3. E-Field Probe.....	12
2.3.1. E-Field Probe Calibration .....	12
2.4. SAM phantoms .....	13
2.4.1. Technical Data .....	14
2.5. Device Holder .....	15
2.6. Test Equipment List .....	16
3. SAR Measurement Procedures .....	18
3.1. Power Reference .....	18
3.2. Area scan & Zoom scan.....	18
3.3. Description of interpolation/extrapolation scheme .....	20
3.4. Volumetric Scan .....	20
3.5. Power Drift .....	20
4. System Verification Procedure .....	21
4.1. Tissue Verification .....	21
4.1.1. Tissue Dielectric Parameter Check Results .....	22
4.2. System Verification Procedure .....	23
4.2.1. System Verification Results.....	24
5. SAR Measurement variability and uncertainty .....	25
5.1. SAR measurement variability.....	25
5.2. SAR measurement uncertainty .....	25
6. RF Exposure Positions.....	26
6.1. Generic device .....	26
7. RF Output Power .....	27
7.1.1. Output Power Results Of WLAN .....	27
7.1.2. Output Power Results Of SRD 2.4G.....	30
7.1.3. Output Power Results Of Bluetooth.....	30
8. Antenna Location.....	32
9. Stand-alone SAR test exclusion.....	38

10.	SAR Results .....	39
10.1.	SAR measurement results .....	39
10.1.1.	SAR measurement Result of WLAN 2.4G .....	39
10.1.2.	SAR measurement Result of SRD 2.4G .....	40
10.1.3.	SAR measurement Result of WLAN 5.2G .....	41
10.1.4.	SAR measurement Result of WLAN 5.3G .....	41
10.1.5.	SAR measurement Result of WLAN 5.6G .....	42
10.1.6.	SAR measurement Result of WLAN 5.8G .....	42
10.2.	Simultaneous Transmission Analysis.....	43
11.	Appendix A. Photo documentation .....	44
12.	Appendix B. System Check Plots.....	45
13.	Appendix C. Plots of High SAR Measurement.....	56
14.	Appendix D. Calibration Certificate .....	57

## 1. General Information

### 1.1. RF exposure limits

(A).Limits for Occupational/Controlled Exposure (W/kg)

Whole-Body	Partial-Body	Hands, Wrists, Feet and Ankles
0.4	8.0	20.0

(B).Limits for General Population/Uncontrolled Exposure (W/kg)

Whole-Body	Partial-Body	Hands, Wrists, Feet and Ankles
0.08	1.6	4.0

NOTE: **Whole-Body SAR** is averaged over the entire body, **partial-body SAR** is averaged over any 1 gram of tissue defined as a tissue volume in the shape of a cube. **SAR for hands, wrists, feet and ankles** is averaged over any 10 grams of tissue defined as a tissue volume in the shape of a cube.

#### **Occupational/Controlled Environments:**

Are defined as locations where there is exposure that may be incurred by people who are aware of the potential for exposure, (i.e. as a result of employment or occupation).

#### **General Population/Uncontrolled Environments:**

Are defined as locations where there is the exposure of individuals who have no knowledge or control of their exposure.

NOTE  
TRUNK LIMIT  
1.6 W/kg  
APPLIED TO THIS EUT

### 1.2. Statement of Compliance

The maximum results of Specific Absorption Rate (SAR) found during testing for UniRC 7 are as follows.

Band	Max Reported SAR Value(W/kg)
	1-g Body (Separation distance of 0mm)
WLAN 2.4G	0.537
SRD 2.4G	0.191
WLAN 5.2G	0.583
WLAN 5.3G	0.318
WLAN 5.6G	0.192
WLAN 5.8G	0.238
Max Simultaneous Tx	0.917

Note: This device is in compliance with Specific Absorption Rate (SAR) for general population / uncontrolled exposure limits (1.6 W/kg) specified in FCC 47 CFR Part 2(2.1093) and ANSI/IEEE C95.1-1992, and had been tested in accordance with the measurement methods and procedures specified in IEEE Std 1528-2013 & KDB 865664 D01.

### 1.3. EUT Description

Device Information	
Product Name	UniRC 7 Ground Control Station
Trade Name	N/A
Model Name	UniRC 7
Family Model	N/A
Model Difference	N/A.
FCC ID	2BN8IUNIRC7
Device Phase	Identical Prototype
Exposure Category	General population / Uncontrolled environment
Antenna Type	EDR/BLE Bluetooth module 1, 2.4/5G for FPC antenna, EDR/BLE Bluetooth module 2 for IFA antenna, 2.4G SRD for Omnidirectional antenna.
Battery Information	DC 7.4V
Power supply	DC 7.4V from battery or DC 5V/9V/12V/15V/20V from adapter
Test Software	Serial communication
RF Power Setting	Defaults
Hardware version	N/A
Software version	N/A
Device Operating Configurations	

Supporting Mode(s)	WLAN 2.4G/5G, SRD 2.4G, Bluetooth		
Test Modulation	WLAN(DSSS/OFDM), Bluetooth(GFSK, $\pi/4$ -DQPSK, 8DPSK), SRD 2.4G(QPSK).		
Operating Frequency Range(s)	Band	Tx (MHz)	Rx (MHz)
	WLAN 2.4G	2412-2462	
	SRD 2.4G	2406.5-2476.5	
	WLAN 5.2G	5180-5240	
	WLAN 5.3G	5260-5320	
	WLAN 5.6G	5500-5700	
	WLAN 5.8G	5745-5825	
	Bluetooth	2402-2480	



**1.4. Test specification(s)**

FCC 47 CFR Part 2(2.1093)
ANSI/IEEE C95.1-1992
IEEE Std 1528-2013
KDB 865664 D01 SAR measurement 100 MHz to 6 GHz v01r04;
KDB 865664 D02 RF Exposure Reporting v01r02;
KDB 447498 D01 General RF Exposure Guidance v06;
KDB 248227 D01 802.11 Wi-Fi SAR v02r02;

**1.5. Ambient Condition**

Ambient temperature	20°C – 24°C
Relative Humidity	30% – 70%

**Facilities**

All measurement facilities used to collect the measurement data are located at Building 1, No. 24 Xinfu East Road, Xiangshan Community, Xinqiao Street, Bao'an District, Shenzhen, Guangdong, China  
 The sites are constructed in conformance with the requirements of IEC/IEEE IEEE Std 1528-2013

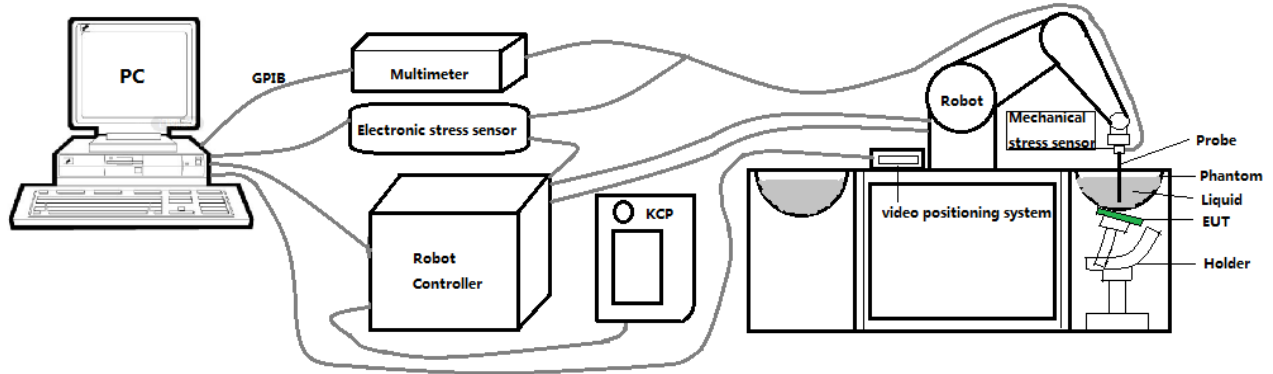
**1.5.1. Laboratory Accreditations And Listings**

Site Description

- CNAS Lab. : The Certificate Registration Number is L5516
- A2LA Lab. : The Certificate Registration Number is 4298.01
- FCC Accredited : Test Firm Registration Number: 463705  
Designation Number: CN1184
- ISED Registration : Company Number: 9270A  
CAB identifier: CN0074

## 2. SAR Measurement System

### 2.1. SATIMO SAR Measurement Set-up Diagram



These measurements were performed with the automated near-field scanning system OPENSAR from SATIMO. The system is based on a high precision robot (working range: 901 mm), which positions the probes with a positional repeatability of better than  $\pm 0.03$  mm. The SAR measurements were conducted with dosimetric probe (manufactured by SATIMO), designed in the classical triangular configuration and optimized for dosimetric evaluation.

The first step of the field measurement is the evaluation of the voltages induced on the probe by the device under test. Probe diode detectors are nonlinear. Below the diode compression point, the output voltage is proportional to the square of the applied E-field; above the diode compression point, it is linear to the applied E-field. The compression point depends on the diode, and a calibration procedure is necessary for each sensor of the probe.

The Keithley multimeter reads the voltage of each sensor and send these three values to the PC. The corresponding E field value is calculated using the probe calibration factors, which are stored in the working directory. This evaluation includes linearization of the diode characteristics. The field calculation is done separately for each sensor. Each component of the E field is displayed on the "Dipole Area Scan Interface" and the total E field is displayed on the "3D Interface"

## 2.2. Robot

The SATIMO SAR system uses the high precision robots from KUKA. For the 6-axis controller system, the robot controller version (KUKA) from KUKA is used. The KUKA robot series have many features that are important for our application:



- High precision (repeatability  $\pm 0.03$  mm)
- High reliability (industrial design)
- Jerk-free straight movements
- Low ELF interference (the closed metallic construction shields against motor control fields)

### 2.3. E-Field Probe

This E-field detection probe is composed of three orthogonal dipoles linked to special Schottky diodes with low detection thresholds. The probe allows the measurement of electric fields in liquids such as the one defined in the IEEE and CENELEC standards.

For the measurements the Specific Dosimetric E-Field Probe 0725-EPGO-448 with following specifications is used



- Dynamic range: 0.01-100 W/kg
- Tip Diameter : 2.5 mm
- Distance between probe tip and sensor center: 1 mm
- Distance between sensor center and the inner phantom surface: 2 mm (repeatability better than  $\pm 1$  mm).
- Probe linearity:  $\pm 0.08$  dB
- Axial isotropy:  $\pm 0.01$  dB
- Hemispherical Isotropy:  $\pm 0.01$  dB
- Calibration range: 650MHz to 5900MHz for head & body simulating liquid.
- Lower detection limit: 8mW/kg

Angle between probe axis (evaluation axis) and surface normal line: less than  $30^\circ$ .

#### 2.3.1. E-Field Probe Calibration

Each probe needs to be calibrated according to a dosimetric assessment procedure with accuracy better than  $\pm 10\%$ . The spherical isotropy shall be evaluated and within  $\pm 0.25$ dB. The sensitivity parameters (Norm X, Norm Y, and Norm Z), the diode compression parameter (DCP) and the conversion factor (Conv F) of the probe are tested. The calibration data can be referred to appendix D of this report.

## 2.4. SAM phantoms

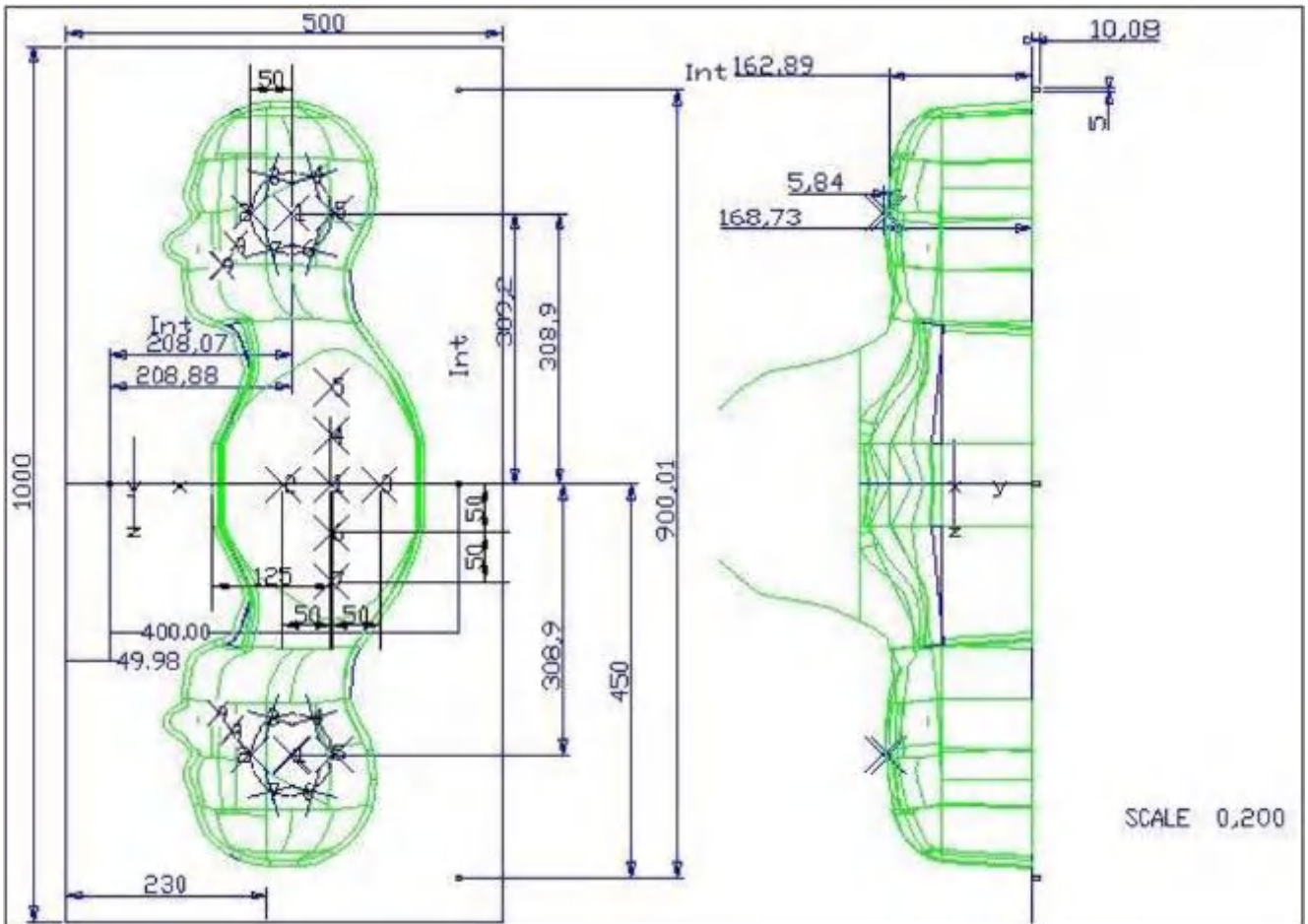
Photo of SAM phantom SN 16/15 SAM119



The SAM phantom is used to measure the SAR relative to people exposed to electro-magnetic field radiated by mobile phones.

**2.4.1. Technical Data**

Serial Number	Shell thickness	Filling volume	Dimensions	Positionner Material	Permittivity	Loss Tangent
<b>SN 16/15 SAM119</b>	2 mm ±0.2 mm	27 liters	Length:1000 mm Width:500 mm Height:200 mm	Gelcoat with fiberglass	3.4	0.02

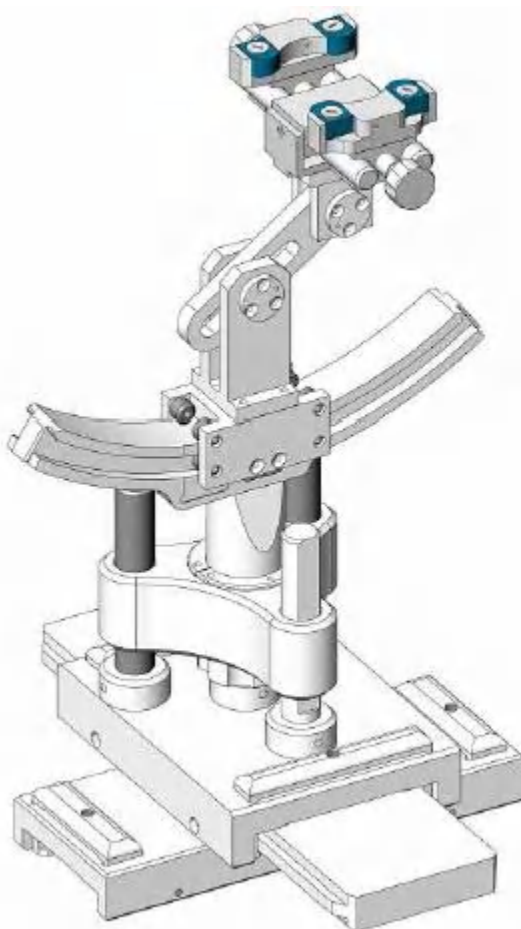


Serial Number	Left Head(mm)		Right Head(mm)		Flat Part(mm)	
	1	2	1	2	1	2
<b>SN 16/15 SAM119</b>	2	2.02	2	2.08	1	2.09
	3	2.05	3	2.06	2	2.06
	4	2.07	4	2.07	3	2.08
	5	2.08	5	2.08	4	2.10
	6	2.05	6	2.07	5	2.10
	7	2.05	7	2.05	6	2.07
	8	2.07	8	2.06	7	2.07
	9	2.08	9	2.06	-	-

The test, based on ultrasonic system, allows measuring the thickness with an accuracy of 10 µm.

## 2.5. Device Holder

The positioning system allows obtaining cheek and tilting position with a very good accuracy. In compliance with CENELEC, the tilt angle uncertainty is lower than 1 degree.



Serial Number	Holder Material	Permittivity	Loss Tangent
SN 16/15 MSH100	Delrin	3.7	0.005



## 2.6. Test Equipment List

This table gives a complete overview of the SAR measurement equipment.

Devices used during the test described are marked

	Manufacturer	Name of Equipment	Type/Model	Serial Number	Calibration	
					Last Cal.	Due Date
<input checked="" type="checkbox"/>	MVG	E FIELD PROBE	SSE2	0725-EPGO-448	Apr. 15, 2025	Apr. 14, 2026
<input type="checkbox"/>	MVG	750 MHz Dipole	SID750	SN 03/15 DIP 0G750-355	Feb. 21, 2024	Feb. 20, 2027
<input type="checkbox"/>	MVG	835 MHz Dipole	SID835	SN 03/15 DIP 0G835-347	Feb. 21, 2024	Feb. 20, 2027
<input type="checkbox"/>	MVG	900 MHz Dipole	SID900	SN 03/15 DIP 0G900-348	Feb. 21, 2024	Feb. 20, 2027
<input type="checkbox"/>	MVG	1800 MHz Dipole	SID1800	SN 03/15 DIP 1G800-349	Feb. 21, 2024	Feb. 20, 2027
<input type="checkbox"/>	MVG	1900 MHz Dipole	SID1900	SN 03/15 DIP 1G900-350	Feb. 21, 2024	Feb. 20, 2027
<input type="checkbox"/>	MVG	2000 MHz Dipole	SID2000	SN 03/15 DIP 2G000-351	Feb. 21, 2024	Feb. 20, 2027
<input checked="" type="checkbox"/>	MVG	2450 MHz Dipole	SID2450	SN 03/15 DIP 2G450-352	Feb. 21, 2024	Feb. 20, 2027
<input type="checkbox"/>	MVG	2600 MHz Dipole	SID2600	SN 03/15 DIP 2G600-356	Feb. 21, 2024	Feb. 20, 2027
<input type="checkbox"/>	MVG	3500 MHz Dipole	SID3500	SN 09/12 DIP 3G500-360	Oct. 15, 2022	Oct. 14, 2025
<input type="checkbox"/>	MVG	3700 MHz Dipole	SID3700	SN 09/12 DIP 3G/700-361	Oct. 15, 2022	Oct. 14, 2025
<input checked="" type="checkbox"/>	MVG	5000 MHz Dipole	SWG5500	SN 13/14 WGA 33	Feb. 21, 2024	Feb. 20, 2027
<input checked="" type="checkbox"/>	MVG	Liquid measurement Kit	SCLMP	SN 21/15 OCPG 72	NCR	NCR
<input checked="" type="checkbox"/>	MVG	Power Amplifier	N/A	AMPLISAR_28/14_003	NCR	NCR
<input checked="" type="checkbox"/>	KEITHLEY	Millivoltmeter	2000	4072790	Nov. 29, 2024	Nov. 28, 2025
<input checked="" type="checkbox"/>	R&S	Universal radio communication tester	CMU200	105747	Apr. 17, 2025	Apr. 16, 2026



<input checked="" type="checkbox"/>	R&S	Wideband radio communication tester	CMW500	103917	May. 12, 2025	May. 11, 2026
<input checked="" type="checkbox"/>	Anritsu	4G LTE comprehensive tester	MT8821C	6262192315	July.17 2024	July.16 2025
<input checked="" type="checkbox"/>	Anritsu	5G NR comprehensive tester	MT8000A	6262186364	July.17 2024	July.16 2025
<input checked="" type="checkbox"/>	HP	Network Analyzer	E5071C	LPS-461	Oct. 15, 2024	Oct. 14, 2025
<input checked="" type="checkbox"/>	Agilent	Calibration Kit	85033E	N/A	May. 31, 2024	May. 30, 2027
<input checked="" type="checkbox"/>	Agilent	MXG Vector Signal Generator	N5182A	MY47070317	Apr. 17, 2025	Apr. 16, 2026
<input checked="" type="checkbox"/>	Agilent	Power sensor	E9301A	LES-413-C	May. 6, 2025	May. 5, 2026
<input checked="" type="checkbox"/>	Agilent	Power sensor	E9301A	US39212148	Apr. 17, 2025	Apr. 16, 2026
<input checked="" type="checkbox"/>	MCLI/USA	Directional Coupler	CB11-20	0D2L51502	Apr. 26, 2024	Apr. 25, 2027
<input checked="" type="checkbox"/>	N/A	Thermometer	N/A	LES-085	Mar. 27, 2023	Mar. 26, 2026
<input checked="" type="checkbox"/>	MVG	SAM Phantom	SSM2	SN 16/15 SAM119	NCR	NCR
<input checked="" type="checkbox"/>	MVG	Device Holder	SMPPD	SN 16/15 MSH100	NCR	NCR

#### Measurement Software

Manufacturer	Software Name	Software Version
SATIMO	OpenSAR	V5.3.15.11

### 3. SAR Measurement Procedures

The measurement procedures are as follows:

<Conducted power measurement>

- (a) For WWAN power measurement, use base station simulator to configure EUT WWAN transmission in conducted connection with RF cable, at maximum power in each supported wireless interface and frequency band.
- (b) Read the WWAN RF power level from the base station simulator.
- (c) For WLAN/Bluetooth power measurement, use engineering software to configure EUT WLAN/Bluetooth continuously transmission, at maximum RF power in each supported wireless interface and frequency band.
- (d) Connect EUT RF port through RF cable to the power meter, and measure WLAN/Bluetooth output power.

<SAR measurement>

- (a) Use base station simulator to configure EUT WWAN transmission in radiated connection, and engineering software to configure EUT WLAN/Bluetooth continuously transmission, at maximum RF power, in the highest power channel.
- (b) Place the EUT in the positions as Appendix A demonstrates.
- (c) Set scan area, grid size and other setting on the OPENSAR software.
- (d) Measure SAR results for the highest power channel on each testing position.
- (e) Find out the largest SAR result on these testing positions of each band.
- (f) Measure SAR results for other channels in worst SAR testing position if the reported SAR of highest power channel is larger than 0.8 W/kg.

According to the test standard, the recommended procedure for assessing the peak spatial-average SAR value consists of the following steps:

- (a) Power reference measurement
- (b) Area scan
- (c) Zoom scan
- (d) Power drift measurement

#### 3.1. Power Reference

The Power Reference Measurement and Power Drift Measurements are for monitoring the power drift of the device under test in the batch process. The minimum distance of probe sensors to surface determines the closest measurement point to phantom surface. This distance cannot be smaller than the distance of sensor calibration points to probe tip as defined in the probe properties.

#### 3.2. Area scan & Zoom scan

The area scan is a 2D scan to find the hot spot location on the DUT. The zoom scan is a 3D scan

above the hot spot to calculate the 1g and 10g SAR value.

Measurement of the SAR distribution with a grid of 8 to 16 mm \* 8 to 16 mm and a constant distance to the inner surface of the phantom. Since the sensors cannot directly measure at the inner phantom surface, the values between the sensors and the inner phantom surface are extrapolated. With these values the area of the maximum SAR is calculated by an interpolation scheme. Around this point, a cube of 30 \* 30 \* 30 mm or 32 \* 32 \* 32 mm is assessed by measuring 5 or 8 \* 5 or 8 \* 4 or 5 mm. With these data, the peak spatial-average SAR value can be calculated.

From the scanned SAR distribution, identify the position of the maximum SAR value, in addition identify the positions of any local maxima with SAR values within 2 dB of the maximum value that will not be within the zoom scan of other peaks; additional peaks shall be measured only when the primary peak is within 2 dB of the SAR compliance limit (e.g., 1 W/kg for 1,6 W/kg 1 g limit, or 1,26 W/kg for 2 W/kg, 10 g limit).

Area scan & Zoom scan scan parameters extracted from FCC KDB 865664 D01 SAR measurement 100 MHz to 6 GHz.

		≤ 3 GHz	> 3 GHz	
Maximum distance from closest measurement point (geometric center of probe sensors) to phantom surface		5 ± 1 mm	$\frac{1}{2} \cdot \delta \cdot \ln(2) \pm 0.5$ mm	
Maximum probe angle from probe axis to phantom surface normal at the measurement location		30° ± 1°	20° ± 1°	
Maximum area scan spatial resolution: $\Delta x_{Area}$ , $\Delta y_{Area}$		≤ 2 GHz: ≤ 15 mm 2 – 3 GHz: ≤ 12 mm	3 – 4 GHz: ≤ 12 mm 4 – 6 GHz: ≤ 10 mm	
		When the x or y dimension of the test device, in the measurement plane orientation, is smaller than the above, the measurement resolution must be ≤ the corresponding x or y dimension of the test device with at least one measurement point on the test device.		
Maximum zoom scan spatial resolution: $\Delta x_{Zoom}$ , $\Delta y_{Zoom}$		≤ 2 GHz: ≤ 8 mm 2 – 3 GHz: ≤ 5 mm*	3 – 4 GHz: ≤ 5 mm* 4 – 6 GHz: ≤ 4 mm*	
Maximum zoom scan spatial resolution, normal to phantom surface	uniform grid: $\Delta z_{Zoom}(n)$	≤ 5 mm	3 – 4 GHz: ≤ 4 mm 4 – 5 GHz: ≤ 3 mm 5 – 6 GHz: ≤ 2 mm	
	graded grid	$\Delta z_{Zoom}(1)$ : between 1 <sup>st</sup> two points closest to phantom surface	≤ 4 mm	3 – 4 GHz: ≤ 3 mm 4 – 5 GHz: ≤ 2.5 mm 5 – 6 GHz: ≤ 2 mm
		$\Delta z_{Zoom}(n>1)$ : between subsequent points	≤ 1.5 · $\Delta z_{Zoom}(n-1)$	
Minimum zoom scan volume	x, y, z	≥ 30 mm	3 – 4 GHz: ≥ 28 mm 4 – 5 GHz: ≥ 25 mm 5 – 6 GHz: ≥ 22 mm	

Note:  $\delta$  is the penetration depth of a plane-wave at normal incidence to the tissue medium; see draft standard IEEE P1528-2011 for details.

\* When zoom scan is required and the *reported* SAR from the *area scan based 1-g SAR estimation* procedures of KDB 447498 is ≤ 1.4 W/kg, ≤ 8 mm, ≤ 7 mm and ≤ 5 mm zoom scan resolution may be applied, respectively, for 2 GHz to 3 GHz, 3 GHz to 4 GHz and 4 GHz to 6 GHz.

### **3.3. Description of interpolation/extrapolation scheme**

The local SAR inside the phantom is measured using small dipole sensing elements inside a probe body. The probe tip must not be in contact with the phantom surface in order to minimise measurements errors, but the highest local SAR will occur at the surface of the phantom.

An extrapolation is using to determinate this highest local SAR values. The extrapolation is based on a fourth-order least-square polynomial fit of measured data. The local SAR value is then extrapolated from the liquid surface with a 1 mm step.

The measurements have to be performed over a limited time (due to the duration of the battery) so the step of measurement is high. It could vary between 5 and 8 mm. To obtain an accurate assessment of the maximum SAR averaged over 10 grams and 1 gram requires a very fine resolution in the three dimensional scanned data array.

### **3.4. Volumetric Scan**

The volumetric scan consists to a full 3D scan over a specific area. This 3D scan is useful form multi Tx SAR measurement. Indeed, it is possible with OpenSAR to add, point by point, several volumetric scan to calculate the SAR value of the combined measurement as it is define in the standard IEEE1528 and IEC62209.

### **3.5. Power Drift**

All SAR testing is under the EUT install full charged battery and transmit maximum output power. In OpenSAR measurement software, the power reference measurement and power drift measurement procedures are used for monitoring the power drift of EUT during SAR test. Both these procedures measure the field at a specified reference position before and after the SAR testing. The software will calculate the field difference in V/m. If the power drifts more than  $\pm 5\%$ , the SAR will be retested.

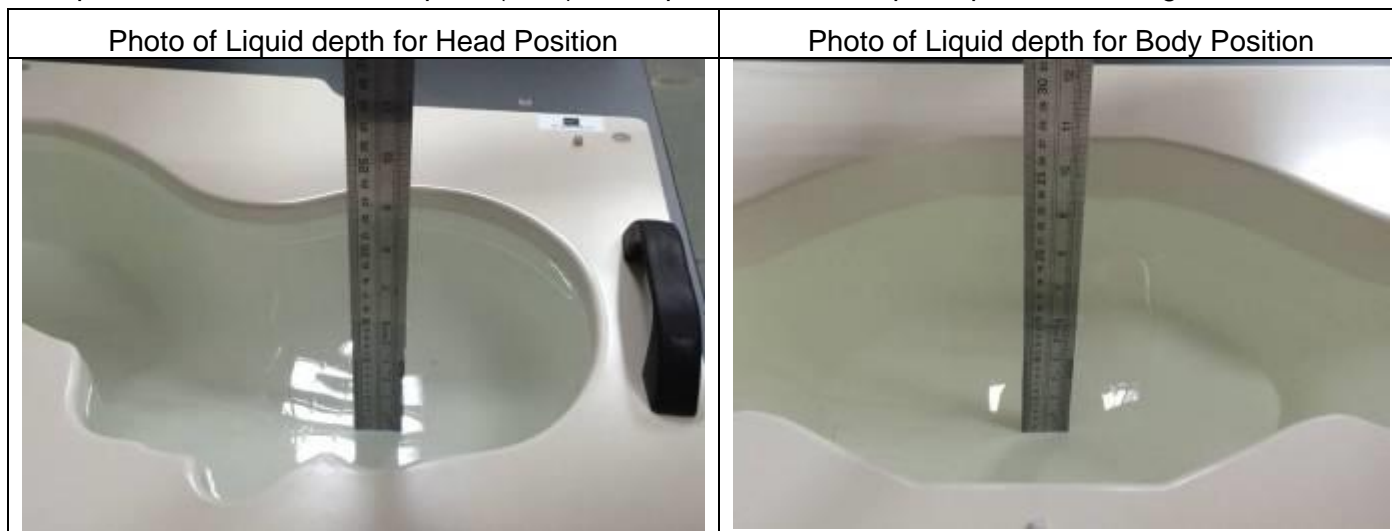
## 4. System Verification Procedure

### 4.1. Tissue Verification

The following tissue formulations are provided for reference only as some of the parameters have not been thoroughly verified. The composition of ingredients may be modified accordingly to achieve the desired target tissue parameters required for routine SAR evaluation.

Ingredients (% of weight)	Head Tissue									
	750	835	900	1800	1900	2000	2450	2600	5200	5800
Frequency Band (MHz)										
Water	34.40	34.40	34.40	55.36	55.36	57.87	57.87	57.87	65.53	65.53
NaCl	0.79	0.79	0.79	0.35	0.35	0.16	0.16	0.16	0.00	0.00
1,2-Propanediol	64.81	64.81	64.81	0.00	0.00	0.00	0.00	0.00	0.00	0.00
Triton X-100	0.00	0.00	0.00	30.45	30.45	19.97	19.97	19.97	24.24	24.24
DGBE	0.00	0.00	0.00	13.84	13.84	22.00	22.00	22.00	10.23	10.23
Ingredients (% of weight)	Body Tissue									
	750	835	900	1800	1900	2000	2450	2600	5200	5800
Frequency Band (MHz)										
Water	50.30	50.30	50.30	69.91	69.91	71.88	71.88	71.88	79.54	79.54
NaCl	0.60	0.60	0.60	0.13	0.13	0.16	0.16	0.16	0.00	0.00
1,2-Propanediol	49.10	49.10	49.10	0.00	0.00	0.00	0.00	0.00	0.00	0.00
Triton X-100	0.00	0.00	0.00	9.99	9.99	19.97	19.97	19.97	11.24	11.24
DGBE	0.00	0.00	0.00	19.97	19.97	7.99	7.99	7.99	9.22	9.22

For SAR measurement of the field distribution inside the phantom, the phantom must be filled with homogeneous tissue simulating liquid to a depth of at least 15 cm. For head SAR testing, the liquid depth from the ear reference point (ERP) of the phantom to the liquid top surface is larger than 15 cm.



#### 4.1.1. Tissue Dielectric Parameter Check Results

The simulating liquids should be checked at the beginning of a series of SAR measurements to determine if the dielectric parameters are within the tolerances of the specified target values. The measured conductivity and relative permittivity should be within  $\pm 5\%$  of the target values.

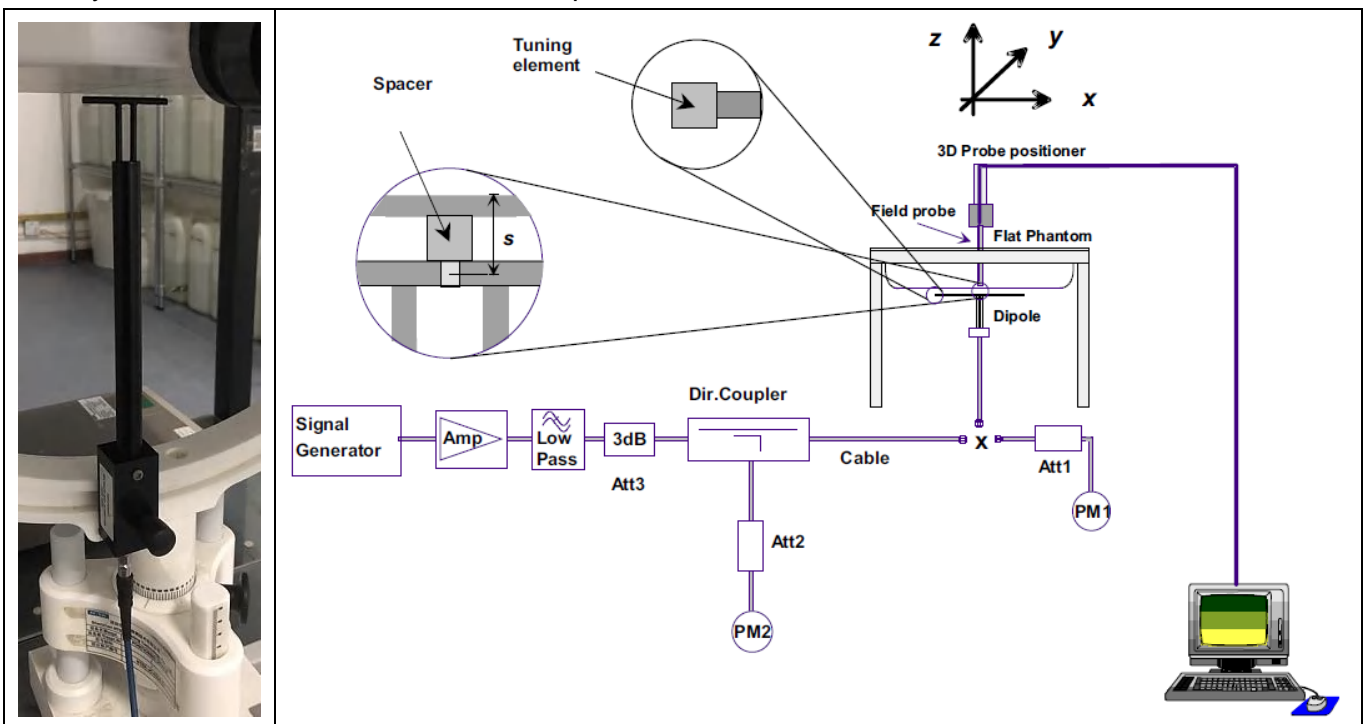
Tissue Type	Measured Frequency (MHz)	Target Tissue		Measured Tissue		Delta(%)		Liquid Temp.	Test Date
		$\epsilon_r$	$\sigma$ (S/m)	$\epsilon_r$	$\sigma$ (S/m)	$\epsilon_r$	$\sigma$ (S/m)		
Head 2450	2450	39.20	1.80	38.35	1.83	-2.16	1.44	21.1 °C	Jun. 07, 2025
Head 5200	5200	36.00	4.66	37.48	4.60	4.11	-1.27	21.3 °C	Jun. 09, 2025
Head 5400	5400	35.80	4.86	35.35	1.98	-1.27	-59.34	21.5 °C	Jun. 14, 2025
Head 5600	5600	35.50	5.07	35.92	5.08	1.19	0.12	21.3 °C	May. 24, 2025
Head 5800	5800	35.30	5.27	36.15	5.17	2.40	-1.84	21.0 °C	Jun. 10, 2025

NOTE: The dielectric parameters of the tissue-equivalent liquid should be measured under similar ambient conditions and within 2 °C of the conditions expected during the SAR evaluation to satisfy protocol requirements.

#### 4.2. System Verification Procedure

The system verification is performed for verifying the accuracy of the complete measurement system and performance of the software. The dipole is connected to the signal source consisting of signal generator and amplifier via a directional coupler, N-connector cable and adaption to SMA. To adjust this power a power meter is used. The power sensor is connected to the cable before the system verification to measure the power at this point and do adjustments at the signal generator. At the outputs of the directional coupler both return loss as well as forward power are controlled during the system verification to make sure that emitted power at the dipole is kept constant. This can also be checked by the power drift measurement after the test (result on plot).

The system verification is shown as below picture:



#### 4.2.1. System Verification Results

Comparing to the original SAR value provided by SATIMO, the verification data should be within its specification of  $\pm 10\%$ . Below table shows the target SAR and measured SAR after normalized to 1W input power. The table below indicates the system performance verification can meet the variation criterion and the plots can be referred to Appendix B of this report.

System Verification	Target SAR (1W)		Measured SAR				Measured SAR		Delta (%)		Liquid Temp.	Test Date
							(Normalized to 1W)					
	1-g (W/Kg)	10-g (W/Kg)	Input Power (mW)	1-g (W/Kg)	10-g (W/Kg)	1-g (W/Kg)	10-g (W/Kg)	1-g (%)	10-g (%)			
2450MHz	50.05	23.80	100.00	5.38	2.33	53.79	23.30	7.47	-2.10	21.1 °C	Jun. 07, 2025	
5200MHz	162.59	56.21	10.00	1.67	0.57	166.90	56.50	2.65	0.52	21.3 °C	Jun. 09, 2025	
5400MHz	159.81	55.00	10.00	1.53	0.52	153.10	51.50	-4.20	-6.36	21.5 °C	Jun. 14, 2025	
5600MHz	179.15	61.01	10.00	1.69	0.57	168.50	57.00	-5.94	-6.57	21.3 °C	May. 24, 2025	
5800MHz	182.20	61.32	10.00	1.79	0.60	178.70	59.80	-1.92	-2.48	21.0 °C	Jun. 10, 2025	



## 5. SAR Measurement variability and uncertainty

### 5.1. SAR measurement variability

Per KDB865664 D01 SAR measurement 100 MHz to 6 GHz, SAR measurement variability must be assessed for each frequency band, which is determined by the SAR probe calibration point and tissue-equivalent medium used for the device measurements. The additional measurements are repeated after the completion of all measurements requiring the same head or body tissue-equivalent medium in a frequency band. The test device should be returned to ambient conditions (normal room temperature) with the battery fully charged before it is re-mounted on the device holder for the repeated measurement(s) to minimize any unexpected variations in the repeated results.

- 1) Repeated measurement is not required when the original highest measured SAR is  $< 0.80$  W/kg; steps 2) through 4) do not apply.
- 2) When the original highest measured SAR is  $\geq 0.80$  W/kg, repeat that measurement once.
- 3) Perform a second repeated measurement only if the ratio of largest to smallest SAR for the original and first repeated measurements is  $> 1.20$  or when the original or repeated measurement is  $\geq 1.45$  W/kg (~ 10% from the 1-g SAR limit).
- 4) Perform a third repeated measurement only if the original, first or second repeated measurement is  $\geq 1.5$  W/kg and the ratio of largest to smallest SAR for the original, first and second repeated measurements is  $> 1.20$ .

### 5.2. SAR measurement uncertainty

Per KDB865664 D01 SAR Measurement 100 MHz to 6 GHz, when the highest measured 1-g SAR within a frequency band is  $< 1.5$  W/kg, the extensive SAR measurement uncertainty analysis described in IEEE Std 1528-2013 is not required in SAR reports submitted for equipment approval. The equivalent ratio (1.5/1.6) is applied to extremity and occupational exposure conditions.

## 6. RF Exposure Positions

### 6.1. Generic device

The SAR evaluation shall be performed for surface of the DUT that are accessible during intended use, as indicated in Figure 6.1. Adjust the distance between the device surface and the flat phantom to 0mm.

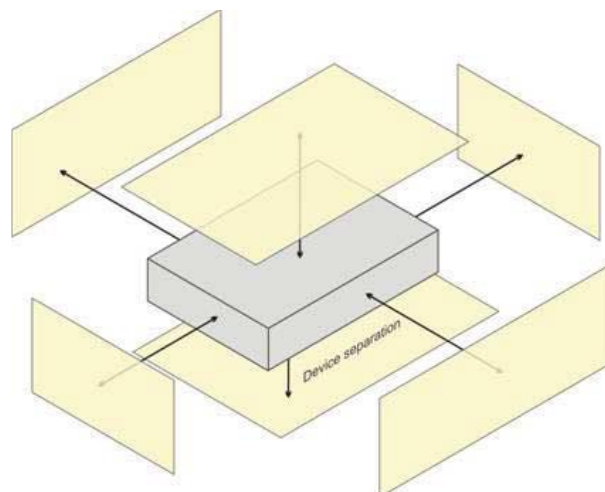


Figure 6.1 – Test positions for generic device

## 7. RF Output Power

### 7.1.1. Output Power Results Of WLAN

Mode	Channel	Frequency (MHz)	Tune-up(dBm)	Output Power (dBm)
802.11b	1	2412	13.50	12.78
	6	2437	13.50	12.96
	11	2462	13.50	13.03
802.11g	1	2412	13.00	12.40
	6	2437	13.00	12.63
	11	2462	13.00	12.48
802.11n HT20	1	2412	12.50	11.98
	6	2437	12.50	12.32
	11	2462	12.50	12.08
802.11n HT40	3	2422	12.50	12.38
	6	2437	12.50	12.11
	9	2452	12.50	12.27

NOTE: Power measurement results of WLAN 2.4G.

Mode	Channel	Frequency (MHz)	Tune-up (dBm)	Output Power (dBm)
802.11a	36	5180	13.00	12.53
	40	5200	13.00	12.49
	48	5240	13.00	12.42
802.11n HT20	36	5180	12.00	11.84
	40	5200	12.00	11.65
	48	5240	12.00	11.87
802.11n HT40	38	5190	13.00	12.99
	46	5230	13.00	12.35
802.11ac VHT20	36	5180	12.00	11.86
	40	5200	12.00	11.70
	48	5240	12.00	11.79
802.11ac VHT40	38	5190	13.00	12.64
	46	5230	13.00	12.44
802.11ac VHT80	42	5210	5.00	5.00

NOTE: Power measurement results of WLAN 5.2G.

Mode	Channel	Frequency (MHz)	Tune-up (dBm)	Output Power (dBm)
802.11a	52	5260	13.00	12.29
	56	5280	13.00	12.32
	64	5320	13.00	12.82
802.11n HT20	52	5260	13.00	11.83
	56	5280	13.00	12.16
	64	5320	13.00	12.67
802.11n HT40	54	5270	12.50	11.47
	62	5310	12.50	12.26
802.11ac VHT20	52	5260	13.00	11.95
	56	5280	13.00	12.29
	64	5320	13.00	12.74
802.11ac VHT40	54	5270	13.50	12.60
	62	5310	13.50	13.05
802.11ac VHT80	58	5290	6.50	6.03

NOTE: Power measurement results of WLAN 5.3G.

Mode	Channel	Frequency (MHz)	Tune-up (dBm)	Output Power (dBm)
802.11a	100	5500	14.50	14.09
	120	5600	14.50	12.66
	140	5700	14.50	12.61
802.11n	100	5500	14.00	13.98
	120	5600	14.00	12.18
	140	5700	14.00	12.46
802.11n	102	5510	14.00	13.71
	118	5590	14.00	13.25
	134	5670	14.00	12.70
802.11ac (VHT20)	100	5500	13.50	13.09
	120	5600	13.50	12.39
	140	5700	13.50	12.32
802.11ac (VHT40)	102	5510	14.00	13.71
	118	5590	14.00	13.12
	134	5670	14.00	12.88
802.11ac (VHT80)	106	5530	9.50	9.25
	122	5610	9.50	8.25

NOTE: Power measurement results of WLAN 5.6G.

Mode	Channel	Frequency (MHz)	Tune-up (dBm)	Output Power (dBm)
802.11a	149	5745	13.00	11.46
	157	5785	13.00	11.95
	165	5825	13.00	12.55
802.11n HT20	149	5745	12.50	11.16
	157	5785	12.50	12.06
	165	5825	12.50	12.19
802.11n HT40	151	5755	13.00	11.79
	159	5795	13.00	12.60
802.11ac VHT20	149	5745	12.50	11.43
	157	5785	12.50	11.58
	165	5825	12.50	12.19
802.11ac VHT40	151	5755	13.00	11.98
	159	5795	13.00	12.71
802.11ac VHT80	155	5775	12.50	12.05

NOTE: Power measurement results of WLAN 5.8G.

**7.1.2. Output Power Results Of SRD 2.4G**

**Ant1**

Mode	Channel	Frequency (MHz)	Tune-up (dBm)	Output Power (dBm)
SRD 2.4G	0	2406.5	23.50	22.16
	4	2446.5	23.50	23.07
	7	2476.5	23.50	21.83

NOTE: Power measurement results of Custom 2.4G

**Ant2**

Mode	Channel	Frequency (MHz)	Tune-up (dBm)	Output Power (dBm)
SRD 2.4G	0	2406.5	22.50	21.39
	4	2446.5	22.50	22.24
	7	2476.5	22.50	21.26

NOTE: Power measurement results of Custom 2.4G

**7.1.3. Output Power Results Of Bluetooth**

**Module 1**

BR+EDR	Output Power (dBm)				
	Data Rates	Tune-up (dBm)	Channel		
			0CH	39CH	78CH
1M	8.00	6.24	6.28	7.23	
2M	9.00	7.67	7.89	8.65	
3M	9.00	7.82	8.14	8.87	

BLE	Output Power (dBm)				
	Data Rates	Tune-up (dBm)	Channel		
			0CH	19CH	39CH
1M	0.50	-1.33	-1.16	0.21	
2M	0.50	-1.16	-1.01	0.27	

NOTE: Power measurement results of Bluetooth.

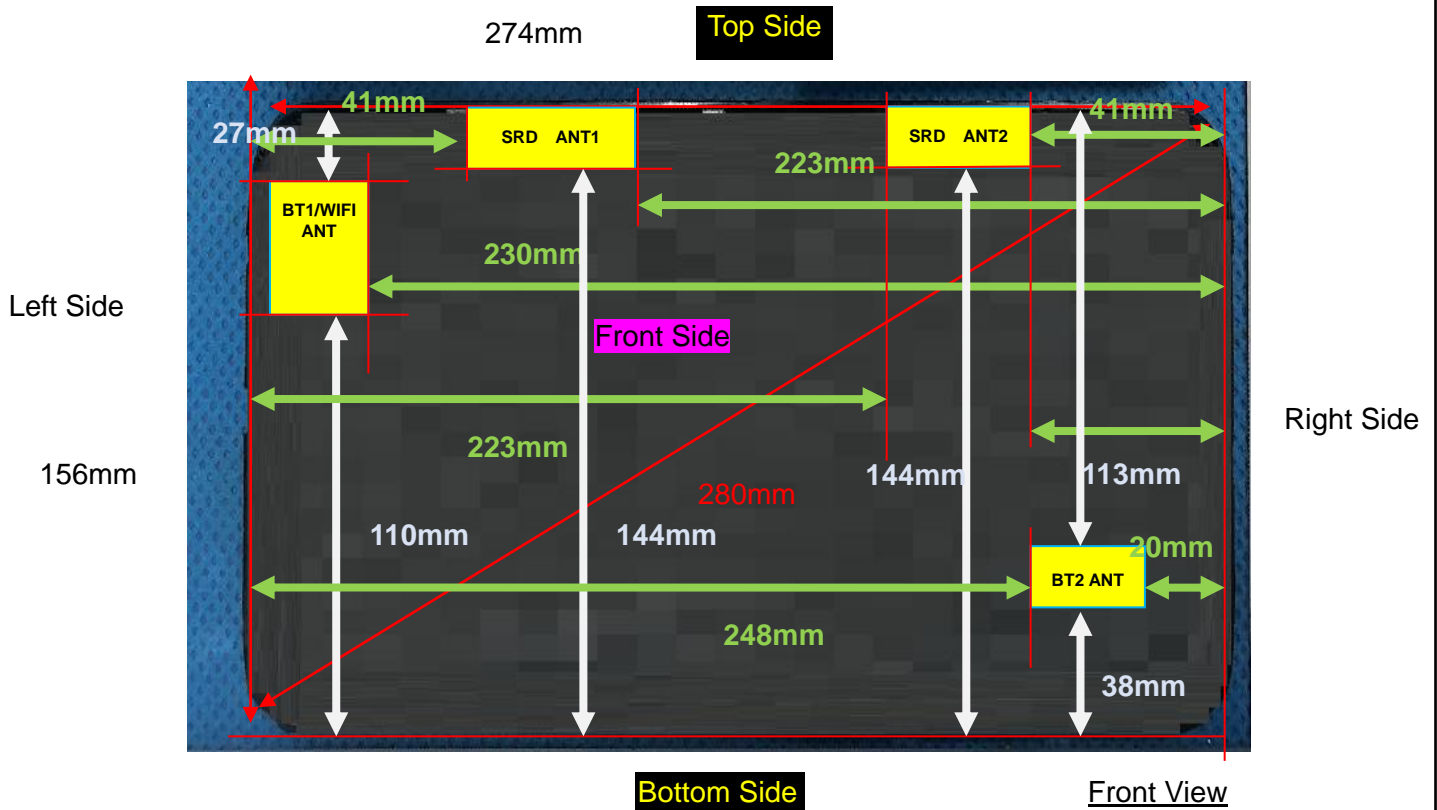
**Module 2**

BR+EDR	Output Power (dBm)				
	Data Rates	Tune-up (dBm)	Channel		
			0CH	39CH	78CH
1M	6.00	4.83	5.24	5.89	
2M	8.50	7.20	7.55	8.19	
3M	9.00	7.75	8.07	8.68	

BLE	Output Power (dBm)				
	Data Rates	Tune-up (dBm)	Channel		
			0CH	19CH	39CH
1M	0.50	-1.33	-1.16	0.21	
2M	0.50	-1.16	-1.01	0.27	

NOTE: Power measurement results of Bluetooth.

### 8. Antenna Location



Note: Since the confidentiality request of EUT, the antenna location example diagram see as above.

Distance of the Antenna to the EUT surface/edge						
Antennas	Front Side	Back Side	Left Side	Right Side	Top Side	Bottom Side
2.4G&5G WLAN	5	5	16	230	27	110
Custom 2.4G ANT1	5	5	41	223	5	191
Custom 2.4G ANT2	5	5	223	41	5	191
Bluetooth Module 1	5	5	5	230	27	110
Bluetooth Module 2	5	5	248	20	113	38

Note: When the minimum separation distance is < 5 mm, a distance of 5 mm is applied to determine SAR test exclusion.



Positions for SAR tests		
Test separation distances $\leq 50$ mm		
Exposure Positions	Tune-up Maximum power of WLAN 2.4G	
	13.50dBm	22.39mW
Front Side	Antenna to user(mm)	5
	SAR exclusion threshold (mW)	10.00
	SAR testing required?	YES
Back Side	Antenna to user(mm)	5
	SAR exclusion threshold (mW)	10.00
	SAR testing required?	YES
Left Side	Antenna to user(mm)	16
	SAR exclusion threshold (mW)	19.00
	SAR testing required?	YES
Top Side	Antenna to user(mm)	27
	SAR exclusion threshold (mW)	48.00
	SAR testing required?	NO
Exposure Positions	Tune-up Maximum power of WLAN 5.2G	
	13.00dBm	19.95mW
Front Side	Antenna to user(mm)	5
	SAR exclusion threshold (mW)	7.00
	SAR testing required?	YES
Back Side	Antenna to user(mm)	5
	SAR exclusion threshold (mW)	7.00
	SAR testing required?	YES
Left Side	Antenna to user(mm)	16
	SAR exclusion threshold (mW)	20.00
	SAR testing required?	NO
Top Side	Antenna to user(mm)	33
	SAR exclusion threshold (mW)	10.00
	SAR testing required?	NO
Exposure Positions	Tune-up Maximum power of WLAN 5.3G	
	13.50dBm	22.39mW
Front Side	Antenna to user(mm)	5
	SAR exclusion threshold (mW)	6.00
	SAR testing required?	YES
Back Side	Antenna to user(mm)	5
	SAR exclusion threshold (mW)	6.00
	SAR testing required?	YES
Left Side	Antenna to user(mm)	16

	SAR exclusion threshold (mW)	19.00
	SAR testing required?	YES
Top Side	Antenna to user(mm)	27
	SAR exclusion threshold (mW)	32.00
	SAR testing required?	NO
	Tune-up Maximum power of WLAN 5.6G	
Exposure Positions	14.50dBm	28.18mW
Front Side	Antenna to user(mm)	5
	SAR exclusion threshold (mW)	6.00
	SAR testing required?	YES
Back Side	Antenna to user(mm)	5
	SAR exclusion threshold (mW)	6.00
	SAR testing required?	YES
Left Side	Antenna to user(mm)	16
	SAR exclusion threshold (mW)	19.00
	SAR testing required?	YES
Top Side	Antenna to user(mm)	27
	SAR exclusion threshold (mW)	32.00
	SAR testing required?	NO
Exposure Positions	Tune-up Maximum power of WLAN 5.8G	
	13.00dBm	19.95mW
Front Side	Antenna to user(mm)	5
	SAR exclusion threshold (mW)	6.00
	SAR testing required?	YES
Back Side	Antenna to user(mm)	5
	SAR exclusion threshold (mW)	6.00
	SAR testing required?	YES
Left Side	Antenna to user(mm)	16
	SAR exclusion threshold (mW)	19.00
	SAR testing required?	YES
Top Side	Antenna to user(mm)	27
	SAR exclusion threshold (mW)	31.00
	SAR testing required?	NO
Exposure Positions	Tune-up Maximum power of SRD 2.4G ANT 1	
	23.50dBm	223.87mW
Front Side	Antenna to user(mm)	5
	SAR exclusion threshold (mW)	10.00
	SAR testing required?	YES
Back Side	Antenna to user(mm)	5
	SAR exclusion threshold (mW)	10.00

	SAR testing required?	YES
Left Side	Antenna to user(mm)	41
	SAR exclusion threshold (mW)	77.00
	SAR testing required?	YES
Top Side	Antenna to user(mm)	5
	SAR exclusion threshold (mW)	10.00
	SAR testing required?	YES
Exposure Positions	Tune-up Maximum power of SRD 2.4G ANT 2	
	22.50dBm	177.83mW
Front Side	Antenna to user(mm)	5
	SAR exclusion threshold (mW)	10.00
	SAR testing required?	YES
Back Side	Antenna to user(mm)	5
	SAR exclusion threshold (mW)	10.00
	SAR testing required?	YES
Right Side	Antenna to user(mm)	41
	SAR exclusion threshold (mW)	77.00
	SAR testing required?	YES
Top Side	Antenna to user(mm)	5
	SAR exclusion threshold (mW)	10.00
	SAR testing required?	YES

Positions for SAR tests		
Test separation distances > 50 mm		
Exposure Positions	Tune-up Maximum power of WLAN 2.4G	
	13.50dBm	22.39mW
Right Side	Antenna to user(mm)	230
	SAR exclusion threshold (mW)	1896
	SAR testing required?	NO
Bottom Side	Antenna to user(mm)	110
	SAR exclusion threshold (mW)	696
	SAR testing required?	NO
Exposure Positions	Tune-up Maximum power of WLAN 5.2G	
	13.00dBm	19.95mW
Right Side	Antenna to user(mm)	230
	SAR exclusion threshold (mW)	1866
	SAR testing required?	NO
Bottom Side	Antenna to user(mm)	110
	SAR exclusion threshold (mW)	666
	SAR testing required?	NO
Exposure Positions	Tune-up Maximum power of WLAN 5.3G	
	13.50dBm	22.39mW
Right Side	Antenna to user(mm)	230
	SAR exclusion threshold (mW)	1865
	SAR testing required?	NO
Bottom Side	Antenna to user(mm)	110
	SAR exclusion threshold (mW)	665
	SAR testing required?	NO
Exposure Positions	Tune-up Maximum power of WLAN 5.6G	
	14.50dBm	28.18mW
Right Side	Antenna to user(mm)	230
	SAR exclusion threshold (mW)	1865
	SAR testing required?	NO
Bottom Side	Antenna to user(mm)	110
	SAR exclusion threshold (mW)	665
	SAR testing required?	NO
Exposure Positions	Tune-up Maximum power of WLAN 5.8G	
	13.00dBm	19.95mW
Right Side	Antenna to user(mm)	230
	SAR exclusion threshold (mW)	1862
	SAR testing required?	NO

Bottom Side	Antenna to user(mm)	110
	SAR exclusion threshold (mW)	662
	SAR testing required?	NO
Exposure Positions	Tune-up Maximum power of SRD 2.4G ANT 1	
	23.50dBm	23.50dBm
Right Side	Antenna to user(mm)	223
	SAR exclusion threshold (mW)	1826
	SAR testing required?	NO
Bottom Side	Antenna to user(mm)	191
	SAR exclusion threshold (mW)	1506
	SAR testing required?	NO
Exposure Positions	Tune-up Maximum power of SRD 2.4G ANT 2	
	22.50dBm	22.50dBm
Left Side	Antenna to user(mm)	223
	SAR exclusion threshold (mW)	1826
	SAR testing required?	NO
Bottom Side	Antenna to user(mm)	191
	SAR exclusion threshold (mW)	1506
	SAR testing required?	NO

## 9. Stand-alone SAR test exclusion

Refer to FCC KDB 447498D01, the 1-g SAR and 10-g SAR test exclusion thresholds for 100 MHz to 6 GHz at test separation distances  $\leq 50$  mm are determined by:

$[(\text{max. power of channel, including tune-up tolerance, mW})/(\text{min. test separation distance, mm})] \cdot [\sqrt{f_{(\text{GHz})}}]$   
 $\leq 3.0$  for 1-g SAR and  $\leq 7.5$  for 10-g extremity SAR, where:

- $f_{(\text{GHz})}$  is the RF channel transmit frequency in GHz
- Power and distance are rounded to the nearest mW and mm before calculation
- The result is rounded to one decimal place for comparison

When the minimum test separation distance is  $< 5$  mm, a distance of 5 mm is applied to determine SAR test exclusion.

Mode	$P_{\text{max}}$ (dBm)	$P_{\text{max}}$ (mW)	Distance (mm)	f (GHz)	Calculation Result	SAR exclusion threshold (mW)	SAR test exclusion
BR+EDR	0.500	1.122	5	2.480	2.502	3	Yes
BLE	9.00	7.943	5	2.480	0.353	3	Yes

NOTE: Standalone SAR test exclusion for Bluetooth.

When standalone SAR test exclusion applies to an antenna that transmits simultaneously with other antennas, the standalone SAR must be estimated according to following to determine simultaneous transmission SAR test exclusion:

$[(\text{max. power of channel, including tune-up tolerance, mW})/(\text{min. test separation distance, mm})] \cdot [\sqrt{f_{(\text{GHz})}/x}]$  W/kg for test separation distances  $\leq 50$ mm, where  $x = 7.5$  for 1-g SAR and  $x = 18.75$  for 10-g SAR.

When the minimum test separation distance is  $< 5$  mm, a distance of 5 mm is applied to determine SAR test exclusion.

Mode	Position	$P_{\text{max}}$ (dBm)	$P_{\text{max}}$ (mW)	Distance (mm)	f (GHz)	x	Estimated SAR (W/Kg)
BR+EDR	Body	0.500	1.122	5	2.48	7.5	0.047
BLE	Body	9.00	7.943	5	2.48	7.5	0.334

NOTE: Estimated SAR calculation for Bluetooth

## 10. SAR Results

### 10.1. SAR measurement results

#### 10.1.1. SAR measurement Result of WLAN 2.4G

Test Position of Body with 0mm	Test channel /Freq.	Mode	SAR Value (W/kg)		Power Drift(%)	Conducted Power (dBm)	Tune-up Power (dBm)	Scaled SAR 1-g (W/Kg)	Date	Plot
			1-g	10-g						
Front Side	6/2437	802.11b	0.474	0.199	2.86	12.96	13.50	0.537	2025/6/07	7#
Back Side	6/2437	802.11b	0.288	0.118	1.07	12.96	13.50	0.326	2025/6/07	
Right Side	6/2437	802.11b	0.150	0.060	3.13	12.96	13.50	0.170	2025/6/07	
Top Side	6/2437	802.11b	0.147	0.059	-3.76	12.96	13.50	0.166	2025/6/07	

NOTE: Body SAR test results of WLAN 2.4G

**10.1.2. SAR measurement Result of SRD 2.4G  
ANT1**

Test Position of Body with 0mm	Test channel /Freq.	Mode	SAR Value (W/kg)		Power Drift(%)	Conducted Power (dBm)	Tune-up Power (dBm)	Scaled SAR 1-g (W/Kg)	Date	Plot
			1-g	10-g						
Front Horizontal	2446.5	QPSK	0.061	0.030	2.82	23.07	23.50	0.067	2025/6/07	
Front Vertical	2446.5	QPSK	0.055	0.026	1.80	23.07	23.50	0.061	2025/6/07	
Back Horizontal	2446.5	QPSK	0.063	0.031	-2.41	23.07	23.50	0.070	2025/6/07	
Back Vertical	2446.5	QPSK	0.042	0.021	-3.11	23.07	23.50	0.046	2025/6/07	
Left Horizontal	2446.5	QPSK	0.105	0.052	0.95	23.07	23.50	0.116	2025/6/07	
Left Vertical	2446.5	QPSK	0.027	0.012	0.71	23.07	23.50	0.030	2025/6/07	
Top Horizontal	2446.5	QPSK	0.164	0.072	-2.74	23.07	23.50	0.181	2025/6/07	5#
Top Vertical	2446.5	QPSK	0.042	0.022	-1.62	23.07	23.50	0.046	2025/6/07	

NOTE: Body SAR test results of SRD 2.4G

**ANT2**

Test Position of Body with 0mm	Test channel /Freq.	Mode	SAR Value (W/kg)		Power Drift(%)	Conducted Power (dBm)	Tune-up Power (dBm)	Scaled SAR 1-g (W/Kg)	Date	Plot
			1-g	10-g						
Front Horizontal	2446.5	QPSK	0.075	0.033	0.63	22.40	22.50	0.077	2025/6/07	
Front Vertical	2446.5	QPSK	0.068	0.031	-0.74	22.40	22.50	0.070	2025/6/07	
Back Horizontal	2446.5	QPSK	0.061	0.029	-0.92	22.40	22.50	0.062	2025/6/07	
Back Vertical	2446.5	QPSK	0.083	0.041	-1.65	22.40	22.50	0.085	2025/6/07	
Right Horizontal	2446.5	QPSK	0.177	0.084	0.74	22.40	22.50	0.181	2025/6/07	
Right Vertical	2446.5	QPSK	0.112	0.056	-2.63	22.40	22.50	0.115	2025/6/07	



Top Horizontal	2446.5	QPSK	0.160	0.083	-1.69	22.40	22.50	0.164	2025/6/07	
Top Vertical	2446.5	QPSK	0.187	0.094	0.55	22.40	22.50	0.191	2025/6/07	6#

NOTE: Body SAR test results of SRD 2.4G

### 10.1.3. SAR measurement Result of WLAN 5.2G

Test Position of Body with 0mm	Test channel /Freq.	Mode	SAR Value (W/kg)		Power Drift(%)	Conducted Power (dBm)	Tune-up Power (dBm)	Scaled SAR 1-g (W/Kg)	Date	Plot
			1-g	10-g						
Front Side	40/5200	802.11a	0.518	0.182	-2.53	12.49	13.00	0.583	2025/6/09	2#
Back Side	40/5200	802.11a	0.056	0.019	-0.23	12.49	13.00	0.063	2025/6/09	
Left Side	40/5200	802.11a	0.106	0.035	-2.01	12.49	13.00	0.119	2025/6/09	
Top Side	40/5200	802.11a	0.138	0.046	-1.50	12.49	13.00	0.155	2025/6/09	

NOTE: Body SAR test results of WLAN 5.2G

### 10.1.4. SAR measurement Result of WLAN 5.3G

Test Position of Body with 0mm	Test channel /Freq.	Mode	SAR Value (W/kg)		Power Drift(%)	Conducted Power (dBm)	Tune-up Power (dBm)	Scaled SAR 1-g (W/Kg)	Date	Plot
			1-g	10-g						
Front Side	62/5310	802.11ac VHT40	0.287	0.101	3.53	13.05	13.50	0.318	2025/6/09	2#
Back Side	62/5310	802.11ac VHT40	0.033	0.011	0.09	13.05	13.50	0.037	2025/6/09	
Right Side	62/5310	802.11ac VHT40	0.060	0.020	1.83	13.05	13.50	0.067	2025/6/09	
Top Side	62/5310	802.11ac VHT40	0.073	0.025	-0.50	13.05	13.50	0.081	2025/6/09	

NOTE: Body SAR test results of WLAN 5.3G

**10.1.5. SAR measurement Result of WLAN 5.6G**

Test Position of Body with 0mm	Test channel /Freq.	Mode	SAR Value (W/kg)		Power Drift(%)	Conducted Power (dBm)	Tune-up Power (dBm)	Scaled SAR 1-g (W/Kg)	Date	Plot
			1-g	10-g						
Front Side	110/5500	802.11a	0.175	0.070	-1.88	14.09	14.50	0.192	2025/5/24	3#
Back Side	110/5500	802.11a	0.022	0.009	-1.83	14.09	14.50	0.024	2025/5/24	
Right Side	110/5500	802.11a	0.042	0.016	-0.59	14.09	14.50	0.046	2025/5/24	
Top Side	110/5500	802.11a	0.055	0.021	2.11	14.09	14.50	0.060	2025/5/24	

NOTE: Body SAR test results of WLAN 5.6G

**10.1.6. SAR measurement Result of WLAN 5.8G**

Test Position of Body with 0mm	Test channel /Freq.	Mode	SAR Value (W/kg)		Power Drift(%)	Conducted Power (dBm)	Tune-up Power (dBm)	Scaled SAR 1-g (W/Kg)	Date	Plot
			1-g	10-g						
Front Side	159/5795	802.11n HT40	0.217	0.075	-2.45	12.60	13.00	0.238	2025/6/10	4#
Back Side	159/5795	802.11n HT40	0.024	0.008	-3.14	12.60	13.00	0.026	2025/6/10	
Right Side	159/5795	802.11n HT40	0.052	0.017	-3.83	12.60	13.00	0.057	2025/6/10	
Top Side	159/5795	802.11n HT40	0.063	0.022	0.23	12.60	13.00	0.069	2025/6/10	

NOTE: Body SAR test results of WLAN 5.8G

### 10.2. Simultaneous Transmission Analysis

- 1.NO simultaneous transmissions are possible for this device 2.4G Wi-Fi and 5G Wi-Fi.
- 2.NO simultaneous transmissions are possible for this device of Bluetooth, 2.4G Wi-Fi.

Test Position		Scaled SAR <sub>MAX</sub>		Σ 1-g SAR (W/Kg)	SPLSR	Remark
		SRD 2.4G	2.4G WLAN			
Body	Front Side	0.077	0.614	0.614	N/A	N/A
	Back Side	0.085	0.411	0.411	N/A	N/A
	Left Side	0.116	0.286	0.286	N/A	N/A
	Right Side	N/A	N/A	N/A	N/A	N/A
	Top Side	0.191	0.357	0.357	N/A	N/A
	Bottom Side	N/A	N/A	N/A	N/A	N/A

Test Position		Scaled SAR <sub>MAX</sub>		Σ 1-g SAR (W/Kg)	SPLSR	Remark
		SRD 2.4G	5G WLAN			
Body	Front Side	0.077	0.614	0.66	N/A	N/A
	Back Side	0.085	0.411	0.148	N/A	N/A
	Left Side	N/A	0.286	0.235	N/A	N/A
	Right Side	0.184	N/A	0.067	N/A	N/A
	Top Side	0.191	0.357	0.346	N/A	N/A
	Bottom Side	N/A	N/A	N/A	N/A	N/A

Test Position		Scaled SAR <sub>MAX</sub>		Σ 1-g SAR (W/Kg)	SPLSR	Remark
		WLAN 5G	BLE			
Body	Front Side	0.583	0.047	0.630	N/A	N/A
	Back Side	0.063	0.047	0.110	N/A	N/A
	Left Side	0.119	0.047	0.166	N/A	N/A
	Right Side	0.067	0.047	0.114	N/A	N/A
	Top Side	0.155	0.047	0.202	N/A	N/A
	Bottom Side	N/A	N/A	N/A	N/A	N/A

Test Position		Scaled SAR <sub>MAX</sub>		Σ 1-g SAR (W/Kg)	SPLSR	Remark
		WLAN 5G	BR+EDR			
Body	Front Side	0.583	0.334	0.917	N/A	N/A
	Back Side	0.063	0.334	0.397	N/A	N/A
	Left Side	0.119	0.334	0.453	N/A	N/A
	Right Side	0.067	0.334	0.401	N/A	N/A
	Top Side	0.155	0.334	0.489	N/A	N/A
	Bottom Side	N/A	N/A	N/A	N/A	N/A

## 11. Appendix A. Photo documentation

Refer to appendix Test Setup photo---SAR

## 12. Appendix B. System Check Plots

Table of contents
<b>MEASUREMENT 1 System Performance Check - 2450MHz</b>
<b>MEASUREMENT 2 System Performance Check - 5200MHz</b>
<b>MEASUREMENT 3 System Performance Check - 5400MHz</b>
<b>MEASUREMENT 4 System Performance Check - 5600MHz</b>
<b>MEASUREMENT 5 System Performance Check - 5800MHz</b>

1# System check at 2450 MHz  
Date of measurement: 7/6/2025

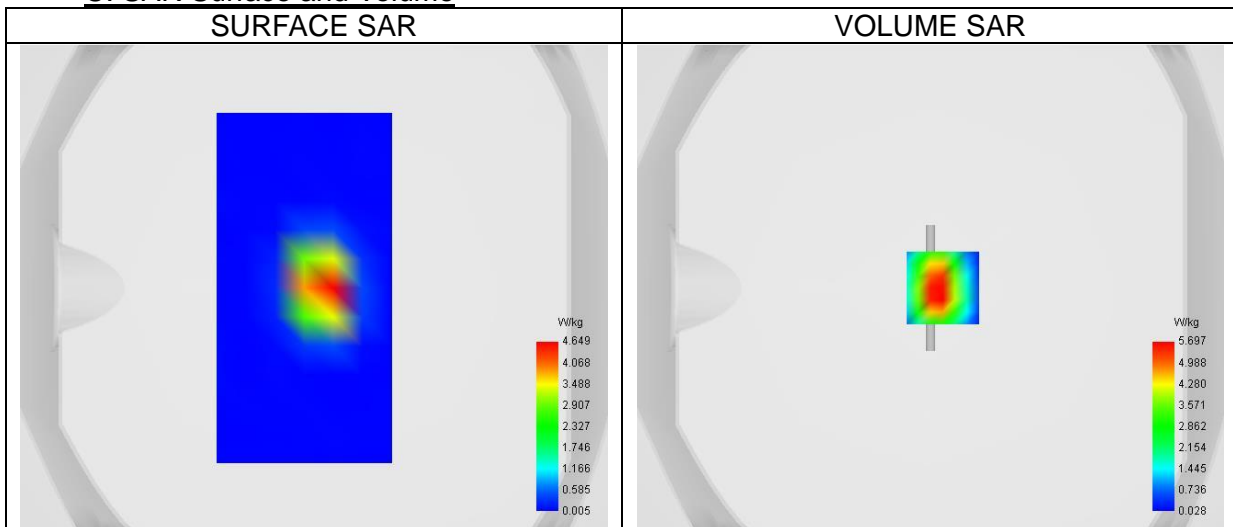
**A. Experimental conditions.**

Probe	0725-EPGO-448
ConvF	1.63
Area Scan	dx=12mm dy=12mm, Complete
Zoom Scan	7x7x7, dx=5mm dy=5mm dz=5.0mm, Complete
Phantom	Validation plane
Device Position	Dipole
Band	CW2450
Signal	CW
Channels/Frequency	Middle

**B. Permittivity**

Middle TX Frequency (MHz)	2450.00
Relative permittivity (real part)	38.35
Relative permittivity (imaginary part)	13.42
Conductivity (S/m)	1.83

**C. SAR Surface and Volume**



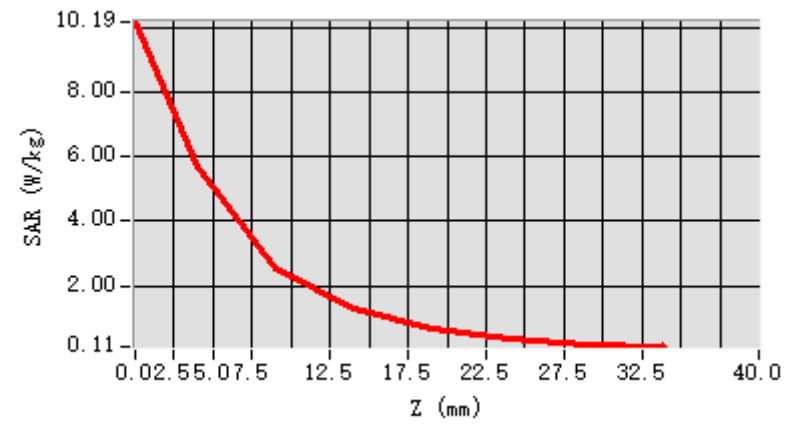
Maximum location: X=5.00, Y=0.00 ; SAR Peak: 10.08 W/kg

**D. SAR 1g & 10g**

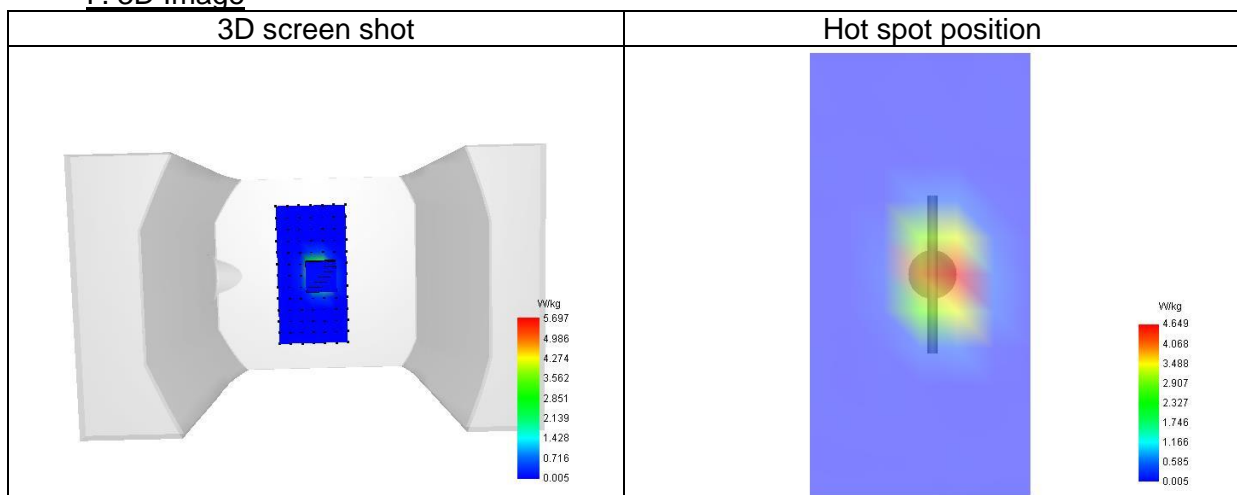
SAR 10g (W/Kg)	2.330
SAR 1g (W/Kg)	5.379
Variation (%)	1.92
Horizontal validation criteria: minimum distance (mm)	10.00
Vertical validation criteria: SAR ratio M2/M1 (%)	49.27

**E. Z Axis Scan**

Z (mm)	0.00	4.00	9.00	14.00	19.00	24.00	29.00
SAR (W/Kg)	10.194	5.697	2.563	1.303	0.649	0.354	0.176



F. 3D Image



**2# System check at 5200 MHz**

Date of measurement: 9/6/2025

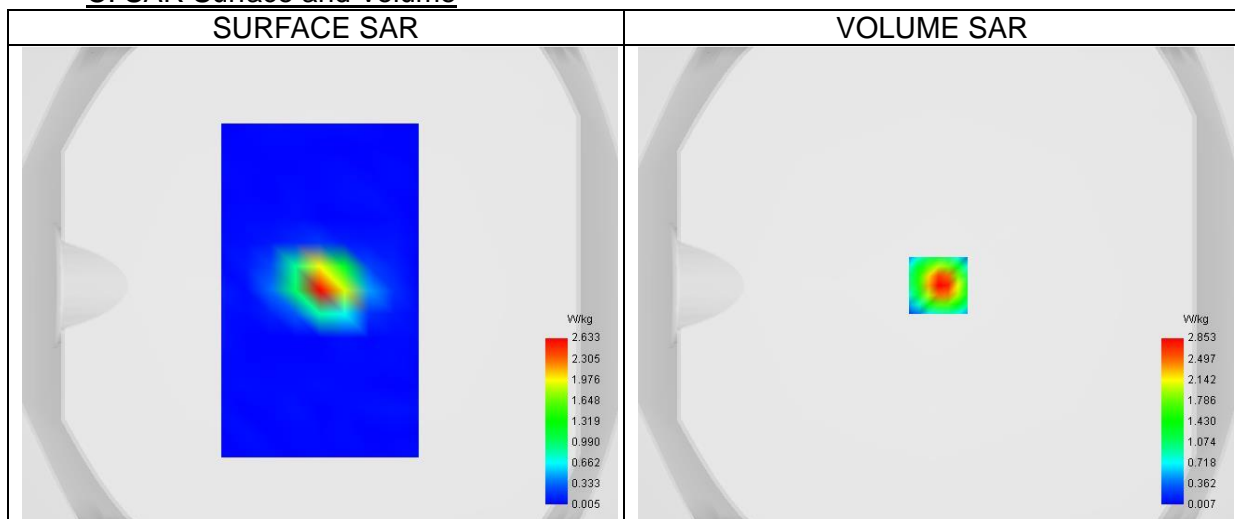
**A. Experimental conditions.**

Probe	0725-EPGO-448
ConvF	1.37
Area Scan	dx=10mm dy=10mm, Complete
Zoom Scan	7x7x12,dx=4mm dy=4mm dz=2.0mm,Complete
Phantom	Validation plane
Device Position	Dipole
Band	CW5200
Signal	CW
Channels/Frequency	Middle

**B. Permittivity**

Middle TX Frequency (MHz)	5200.00
Relative permittivity (real part)	37.48
Relative permittivity (imaginary part)	15.93
Conductivity (S/m)	4.60

**C. SAR Surface and Volume**



Maximum location: X=1.00, Y=0.00 ; SAR Peak: 5.01 W/kg

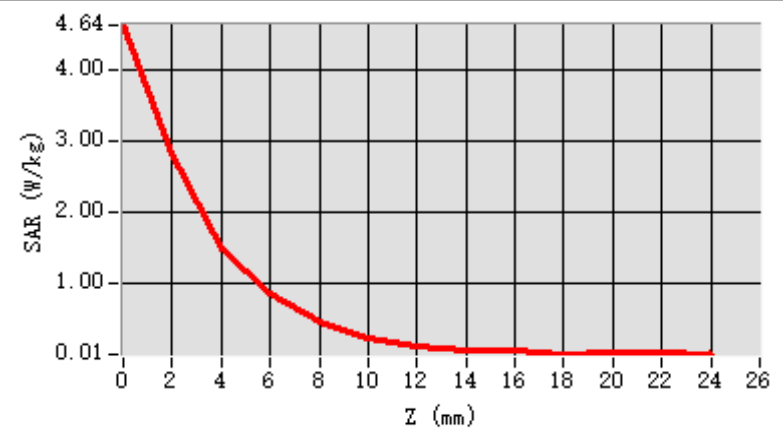
**D. SAR 1g & 10g**

SAR 10g (W/Kg)	0.565
SAR 1g (W/Kg)	1.669
Variation (%)	-0.87
Horizontal validation criteria: minimum distance (mm)	8.94
Vertical validation criteria: SAR ratio M2/M1 (%)	52.85

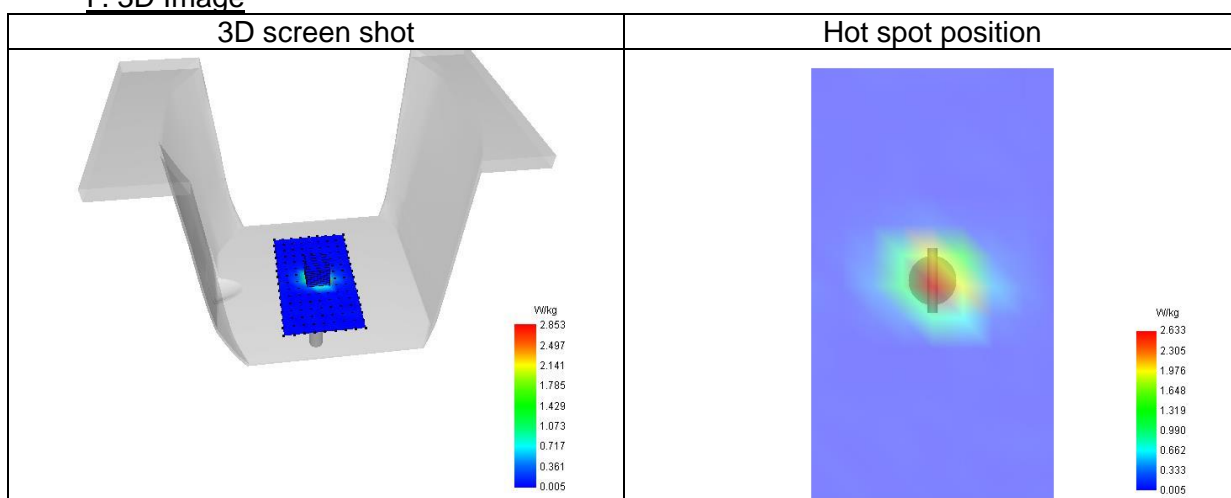
**E. Z Axis Scan**

Z (mm)	0.00	2.00	4.00	6.00	8.00	10.0	12.0	14.0	16.0	18.0	20.0	22.0
						0	0	0	0	0	0	0
SAR (W/Kg)	4.64	2.85	1.50	0.86	0.46	0.23	0.12	0.08	0.07	0.02	0.04	0.04
	2	3	8	7	2	6	2	1	3	4	8	3





F. 3D Image



3# System check at 5400 MHz  
Date of measurement: 14/6/2025

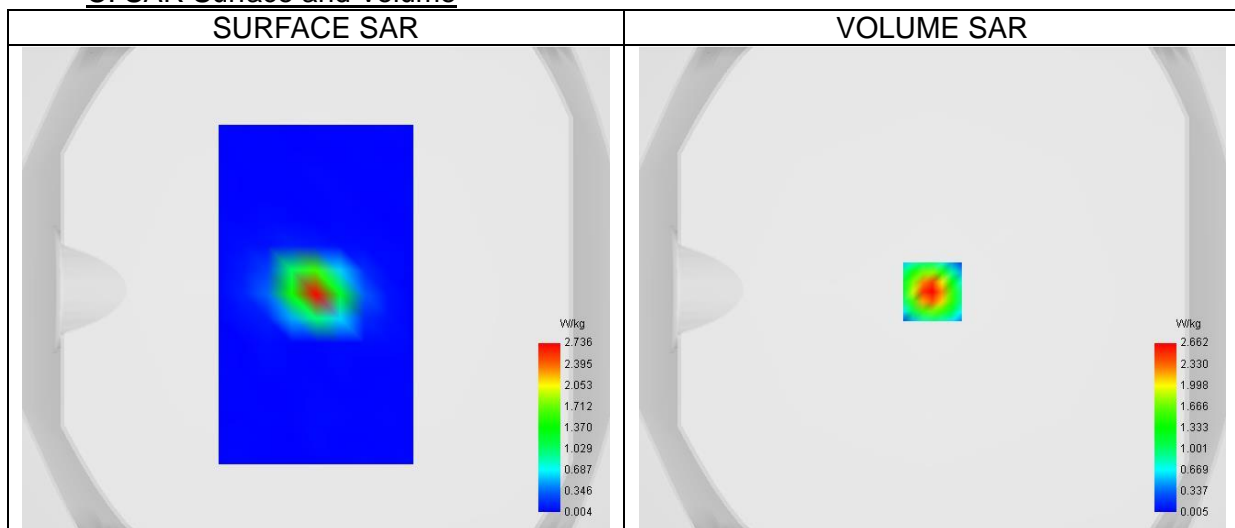
**A. Experimental conditions.**

Probe	0725-EPGO-448
ConvF	1.37
Area Scan	dx=10mm dy=10mm, Complete
Zoom Scan	7x7x12,dx=4mm dy=4mm dz=2.0mm,Complete
Phantom	Validation plane
Device Position	Dipole
Band	CW5400
Signal	CW
Channels/Frequency	Middle

**B. Permittivity**

Middle TX Frequency (MHz)	5400.00
Relative permittivity (real part)	35.34
Relative permittivity (imaginary part)	16.59
Conductivity (S/m)	4.98

**C. SAR Surface and Volume**



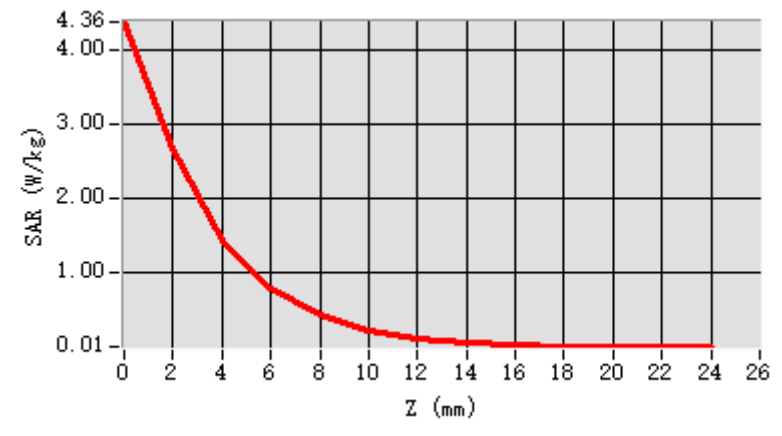
Maximum location: X=0.00, Y=-1.00 ; SAR Peak: 4.58 W/kg

**D. SAR 1g & 10g**

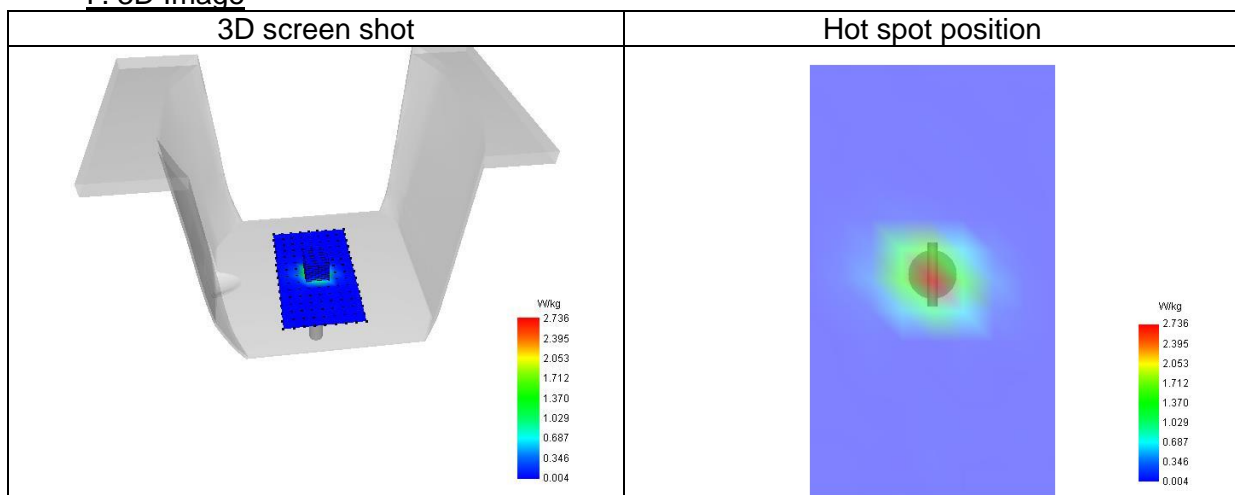
SAR 10g (W/Kg)	0.515
SAR 1g (W/Kg)	1.531
Variation (%)	0.94
Horizontal validation criteria: minimum distance (mm)	8.94
Vertical validation criteria: SAR ratio M2/M1 (%)	53.83

**E. Z Axis Scan**

Z (mm)	0.00	2.00	4.00	6.00	8.00	10.0	12.0	14.0	16.0	18.0	20.0	22.0
SAR (W/Kg)	4.36	2.66	1.43	0.78	0.43	0.23	0.12	0.07	0.03	0.02	0.00	0.01
	3	2	3	8	0	0	3	5	6	0	8	7



F. 3D Image



4# System check at 5600 MHz  
Date of measurement: 24/5/2025

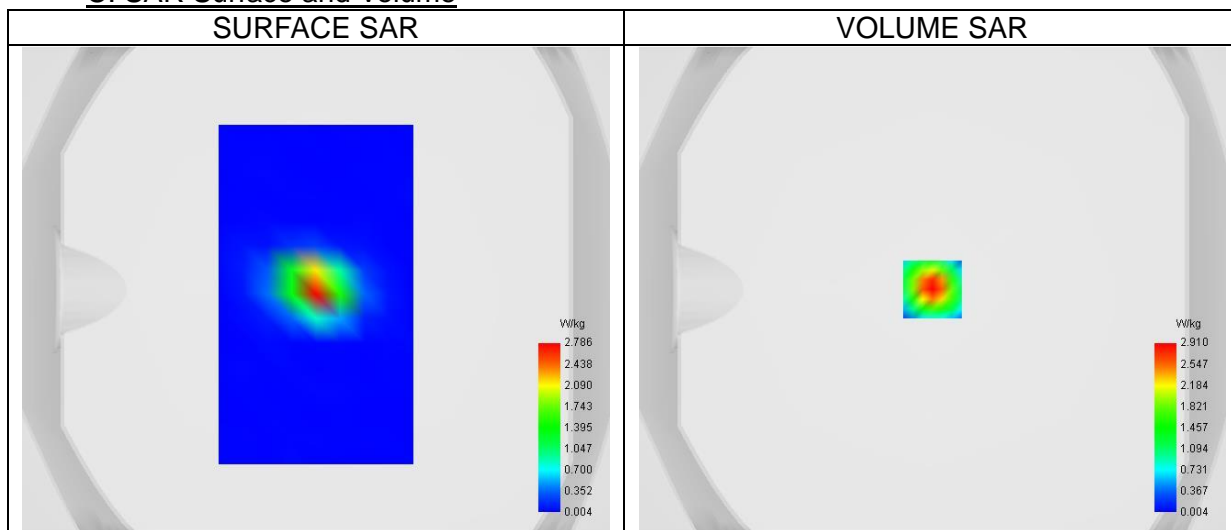
**A. Experimental conditions.**

Probe	0725-EPGO-448
ConvF	1.36
Area Scan	dx=10mm dy=10mm, Complete
Zoom Scan	7x7x12,dx=4mm dy=4mm dz=2.0mm,Complete
Phantom	Validation plane
Device Position	Dipole
Band	CW5600
Signal	CW
Channels/Frequency	Middle

**B. Permittivity**

Middle TX Frequency (MHz)	5600.00
Relative permittivity (real part)	35.92
Relative permittivity (imaginary part)	16.31
Conductivity (S/m)	5.08

**C. SAR Surface and Volume**



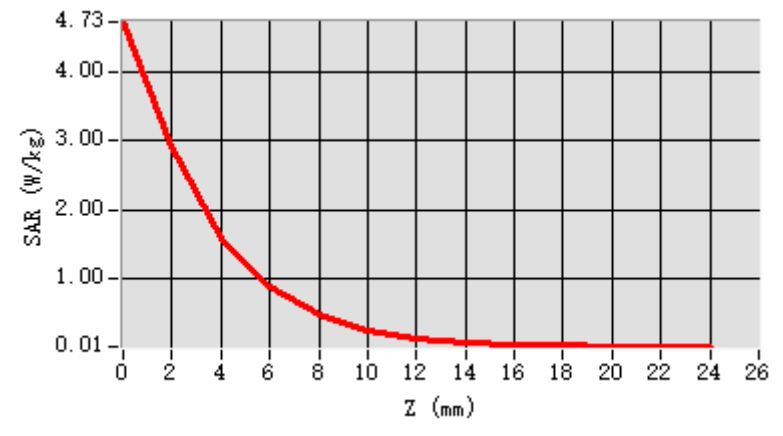
Maximum location: X=0.00, Y=0.00 ; SAR Peak: 5.03 W/kg

**D. SAR 1g & 10g**

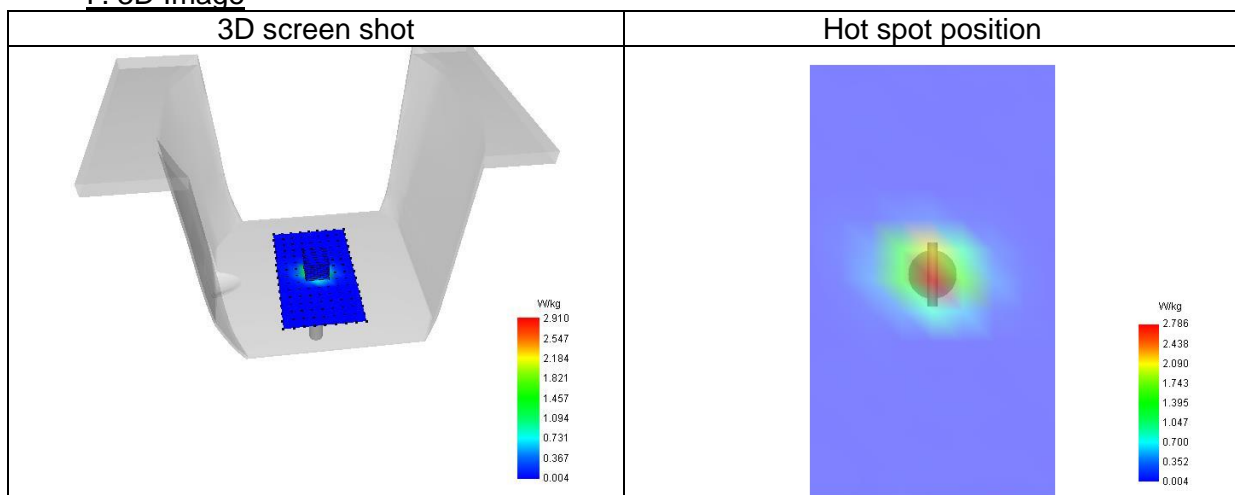
SAR 10g (W/Kg)	0.570
SAR 1g (W/Kg)	1.685
Variation (%)	0.15
Horizontal validation criteria: minimum distance (mm)	11.31
Vertical validation criteria: SAR ratio M2/M1 (%)	54.19

**E. Z Axis Scan**

Z (mm)	0.00	2.00	4.00	6.00	8.00	10.0	12.0	14.0	16.0	18.0	20.0	22.0
SAR (W/Kg)	4.73 2	2.91 0	1.57 7	0.89 6	0.47 5	0.24 9	0.13 4	0.08 2	0.03 4	0.04 9	0.02 1	0.01 0



F. 3D Image



5# System check at 5800 MHz  
Date of measurement: 10/6/2025

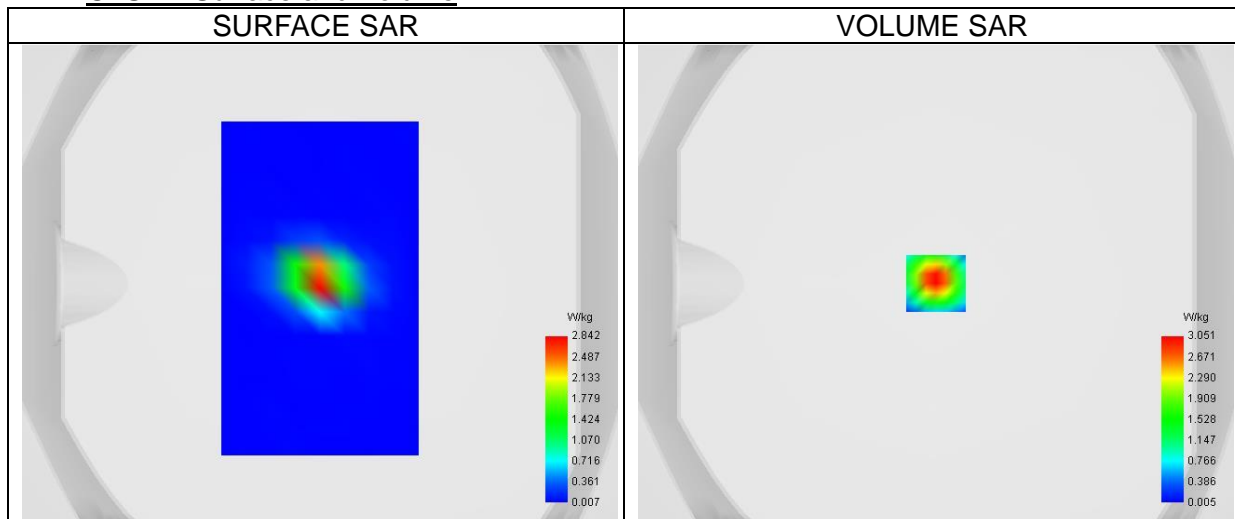
**A. Experimental conditions.**

Probe	0725-EPGO-448
ConvF	1.35
Area Scan	dx=10mm dy=10mm, Complete
Zoom Scan	7x7x12,dx=4mm dy=4mm dz=2.0mm,Complete
Phantom	Validation plane
Device Position	Dipole
Band	CW5800
Signal	CW
Channels/Frequency	Middle

**B. Permittivity**

Middle TX Frequency (MHz)	5800.00
Relative permittivity (real part)	36.15
Relative permittivity (imaginary part)	16.05
Conductivity (S/m)	5.17

**C. SAR Surface and Volume**



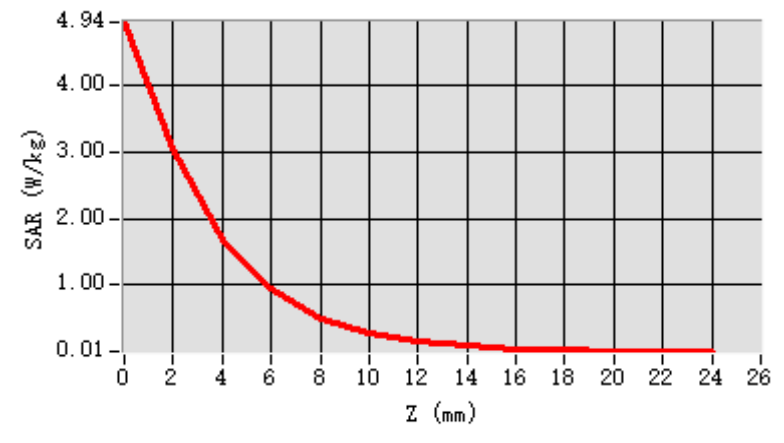
Maximum location: X=0.00, Y=0.00 ; SAR Peak: 5.33 W/kg

**D. SAR 1g & 10g**

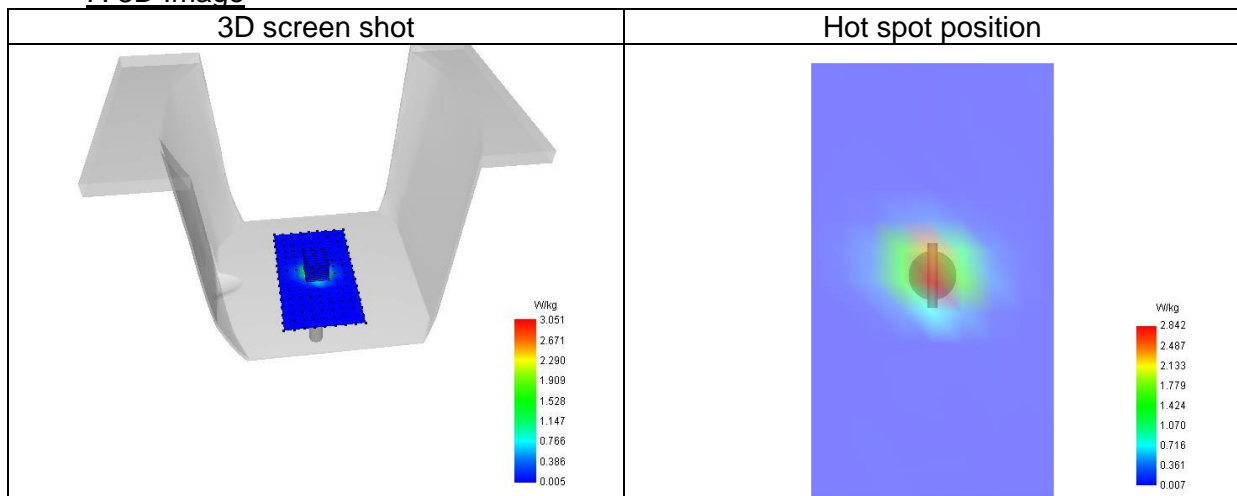
SAR 10g (W/Kg)	0.598
SAR 1g (W/Kg)	1.787
Variation (%)	0.25
Horizontal validation criteria: minimum distance (mm)	8.94
Vertical validation criteria: SAR ratio M2/M1 (%)	54.88

**E. Z Axis Scan**

Z (mm)	0.00	2.00	4.00	6.00	8.00	10.0	12.0	14.0	16.0	18.0	20.0	22.0
SAR (W/Kg)	4.94	3.05	1.67	0.95	0.50	0.27	0.15	0.08	0.04	0.02	0.01	0.01
	5	1	5	6	9	5	7	6	6	4	1	1



F. 3D Image



### 13. Appendix C. Plots of High SAR Measurement

Table of contents
1# SAR Measurement at ISM (Body, Validation Plane)
2# SAR Measurement at ISM (Body, Validation Plane)
3# SAR Measurement at ISM (Body, Validation Plane)
4# SAR Measurement at U-NII-1 (Body, Validation Plane)



## 14. Appendix D. Calibration Certificate

Table of contents
E Field Probe - 0725-EPGO-448
2450 MHz Dipole - SN 03/15 DIP 2G450-352
5000-6000 MHz Dipole - SN 13/14 WGA 33

DocuSign Envelope ID: 8D8CB647-C2B4-4414-A550-C6E3F74EB7AD



## COMOSAR E-Field Probe Calibration Report

Ref : ACR.108.1.25.BES.A

### SHENZHEN NTEK TESTING TECHNOLOGY CO., LTD.

BUILDING E, FENDA SCIENCE PARK, SANWEI  
COMMUNITY, XIXIANG STREET,  
BAO'AN DISTRICT, SHENZHEN GUANGDONG, CHINA  
MVG COMOSAR DOSIMETRIC E-FIELD PROBE  
SERIAL NO.: 0725-EPGO-448

Calibrated at MVG

Z.I. de la pointe du diable

Technopôle Brest Iroise – 295 avenue Alexis de Rochon  
29280 PLOUZANE - FRANCE

Calibration date: 04/15/2025



Accreditations #2-6789  
Scope available on [www.cofrac.fr](http://www.cofrac.fr)

The use of the Cofrac brand and the accreditation references is prohibited from any reproduction.

#### Summary:

This document presents the method and results from an accredited COMOSAR Dosimetric E-Field Probe calibration performed at MVG, using the CALIPROBE test bench, for use with a MVG COMOSAR system only. The test results covered by accreditation are traceable to the International System of Units (SI).

DocuSign Envelope ID: 8D8CB647-C2B4-4414-A550-C6E3F74EB7AD



COMOSAR E-FIELD PROBE CALIBRATION REPORT

Ref: ACR.108.1.25.BES.A

	<i>Name</i>	<i>Function</i>	<i>Date</i>	<i>Signature</i>
<i>Prepared by :</i>	Pedro Ruiz	Technical Manager	4/18/2025	
<i>Checked &amp; approved by:</i>	Pedro Ruiz	Technical Manager	4/18/2025	
<i>Authorized by:</i>	Kim Rutkowski	Quality Manager	4/23/2025	Signed by:  Kimberley ROTKOWSKI <small>2E888547AD1743...</small>

	<i>Customer Name</i>
<i>Distribution :</i>	SHENZHEN NTEK TESTING TECHNOLOGY CO., LTD.

<i>Issue</i>	<i>Name</i>	<i>Date</i>	<i>Modifications</i>
A	Pedro Ruiz	4/18/2025	Initial release

Docusign Envelope ID: 8D8CB647-C2B4-4414-A550-C6E3F74EB7AD



COMOSAR E-FIELD PROBE CALIBRATION REPORT

Ref: ACR.108.1.25.BES.A

TABLE OF CONTENTS

1	Device Under Test .....	4
2	Product Description .....	4
2.1	General Information .....	4
3	Measurement Method .....	4
3.1	Sensitivity .....	4
3.2	Linearity .....	5
3.3	Isotropy .....	5
3.4	Boundary Effect .....	5
3.5	Probe Modulation Response .....	6
4	Measurement Uncertainty .....	6
5	Calibration Results .....	6
5.1	Calibration in air .....	6
5.2	Calibration in liquid .....	7
6	Verification Results .....	8
7	List of Equipment .....	10

DocuSign Envelope ID: 8D8CB647-C2B4-4414-A550-C6E3F74EB7AD



**COMOSAR E-FIELD PROBE CALIBRATION REPORT**

Ref: ACR.108.1.25.BES.A

**1 DEVICE UNDER TEST**

Device Under Test	
Device Type	COMOSAR DOSIMETRIC E FIELD PROBE
Manufacturer	MVG
Model	SSE2
Serial Number	0725-EPGO-448
Product Condition (new / used)	New
Frequency Range of Probe	0.15 GHz-7.5GHz
Resistance of Three Dipoles at Connector	Dipole 1: R1=0.191 MΩ Dipole 2: R2=0.212 MΩ Dipole 3: R3=0.208 MΩ

**2 PRODUCT DESCRIPTION**

**2.1 GENERAL INFORMATION**

MVG's COMOSAR E field Probes are built in accordance to the IEC/IEEE 62209-1528 and FCC KDB865664 D01 standards.



**Figure 1 – MVG COMOSAR Dosimetric E field Probe**

Probe Length	330 mm
Length of Individual Dipoles	2 mm
Maximum external diameter	8 mm
Probe Tip External Diameter	2.5 mm
Distance between dipoles / probe extremity	1 mm

**3 MEASUREMENT METHOD**

The IEC/IEEE 62209-1528 and FCC KDB865664 D01 standards provide recommended practices for the probe calibrations, including the performance characteristics of interest and methods by which to assess their effect. All calibrations / measurements performed meet the fore-mentioned standards.

**3.1 SENSITIVITY**

The sensitivity factors of the three dipoles were determined using a two step calibration method (air and tissue simulating liquid) using waveguides as outlined in the standards for frequency range 600-7500MHz and using the calorimeter cell method (transfer method) as outlined in the standards for frequency 150-450 MHz.

DocuSign Envelope ID: 8D8CB647-C2B4-4414-A550-C6E3F74EB7AD



COMOSAR E-FIELD PROBE CALIBRATION REPORT

Ref: ACR.108.1.25.BES.A

3.2 LINEARITY

The evaluation of the linearity was done in free space using the waveguide, performing a power sweep to cover the SAR range 0.01 W/kg to 100 W/kg.

3.3 ISOTROPY

The axial isotropy was evaluated by exposing the probe to a reference wave from a standard dipole with the dipole mounted under the flat phantom in the test configuration suggested for system validations and checks. The probe was rotated along its main axis from 0 to 360 degrees in 15-degree steps. The hemispherical isotropy is determined by inserting the probe in a thin plastic box filled with tissue-equivalent liquid, with the plastic box illuminated with the fields from a half wave dipole. The dipole is rotated about its axis (0°–180°) in 15° increments. At each step the probe is rotated about its axis (0°–360°).

3.4 BOUNDARY EFFECT

The boundary effect is defined as the deviation between the SAR measured data and the expected exponential decay in the liquid when the probe is oriented normal to the interface. To evaluate this effect, the liquid filled flat phantom is exposed to fields from either a reference dipole or waveguide. With the probe normal to the phantom surface, the peak spatial average SAR is measured and compared to the analytical value at the surface.

The boundary effect uncertainty can be estimated according to the following uncertainty approximation formula based on linear and exponential extrapolations between the surface and  $d_{be} + d_{step}$  along lines that are approximately normal to the surface:

$$SAR_{uncertainty} [\%] = \delta SAR_{be} \frac{(d_{be} + d_{step})^2 (e^{-\alpha(d_{be} + d_{step})})}{2d_{step} \delta/2} \text{ for } (d_{be} + d_{step}) < 10 \text{ mm}$$

- where
- $SAR_{uncertainty}$  is the uncertainty in percent of the probe boundary effect
- $d_{be}$  is the distance between the surface and the closest *zoom-scan* measurement point, in millimetre
- $\Delta_{step}$  is the separation distance between the first and second measurement points that are closest to the phantom surface, in millimetre, assuming the boundary effect at the second location is negligible
- $\delta$  is the minimum penetration depth in millimetres of the head tissue-equivalent liquids defined in this standard, i.e.,  $\delta \approx 14$  mm at 3 GHz;
- $\Delta SAR_{be}$  in percent of SAR is the deviation between the measured SAR value, at the distance  $d_{be}$  from the boundary, and the analytical SAR value.

The measured worst case boundary effect SARuncertainty[%] for scanning distances larger than 4mm is 1.0% Limit ,2%).



DocuSign Envelope ID: 8D8CB647-C2B4-4414-A550-C6E3F74EB7AD



COMOSAR E-FIELD PROBE CALIBRATION REPORT

Ref: ACR.108.1.25.BES.A

3.5 PROBE MODULATION RESPONSE

MVG's probe were evaluated experimentally with various modulated signal and the deviation from CW response were found neglectable in the used power range of the probe. So the correction to taking into account the linearization parameters for different modulation is null, therefore the CW factor given in this report can be used whatever the measured modulation

4 MEASUREMENT UNCERTAINTY

The guidelines outlined in the IEC/IEEE 62209-1528 and FCC KDB865664 D01 standards were followed to generate the measurement uncertainty associated with a SAR probe calibration using the waveguide or calorimetric cell technique depending on the frequency.

The estimated expanded uncertainty (k=2) in calibration for SAR (W/kg) is +/-11% for the frequency range 150-450MHz.

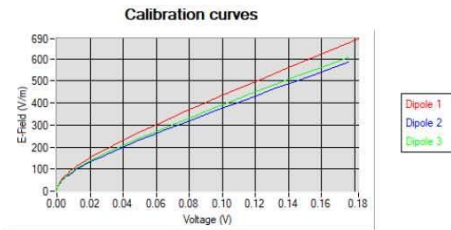
The estimated expanded uncertainty (k=2) in calibration for SAR (W/kg) is +/-14% for the frequency range 600-7500MHz.

5 CALIBRATION RESULTS

Ambient condition	
Liquid Temperature	20 +/- 1 °C
Lab Temperature	20 +/- 1 °C
Lab Humidity	30-70 %

5.1 CALIBRATION IN AIR

The following curve represents the measurement in waveguide of the voltage picked up by the probe toward the E-field generated inside the waveguide.



From this curve, the sensitivity in air is calculated using the below formula.

$$E^2 = \sum_{i=1}^3 \frac{V_i (1 + V_i / DCP_i)}{Norm_i}$$

Page: 6/11

Template\_ACR.DDD.N.YI.MVGB.ISSUE\_COMOSAR Probe vM

This document shall not be reproduced, except in full or in part, without the written approval of MVG. The information contained herein is to be used only for the purpose for which it is submitted and is not to be released in whole or part without written approval of MVG.

DocuSign Envelope ID: 8D8CB647-C2B4-4414-A550-C6E3F74EB7AD



COMOSAR E-FIELD PROBE CALIBRATION REPORT

Ref: ACR.108.1.25.BES.A

where

Vi=voltage readings on the 3 channels of the probe

DCPi=diode compression point given below for the 3 channels of the probe

Normi=dipole sensitivity given below for the 3 channels of the probe

Normx dipole 1 ( $\mu\text{V}/(\text{V}/\text{m})^2$ )	Normy dipole 2 ( $\mu\text{V}/(\text{V}/\text{m})^2$ )	Normz dipole 3 ( $\mu\text{V}/(\text{V}/\text{m})^2$ )
1.03	1.37	1.26

DCP dipole 1 (mV)	DCP dipole 2 (mV)	DCP dipole 3 (mV)
109	107	108

5.2 CALIBRATION IN LIQUID

The calorimeter cell or the waveguide is used to determine the calibration in liquid using the formula below.

$$ConvF = \frac{E_{liquid}^2}{E_{air}^2}$$

The E-field in the liquid is determined from the SAR measurement according to the below formula.

$$E_{liquid}^2 = \frac{\rho SAR}{\sigma}$$

where

$\sigma$ =the conductivity of the liquid

$\rho$ =the volumetric density of the liquid

SAR=the SAR measured from the formula that depends on the setup used. The SAR formulas are given below

For the calorimeter cell (150-450 MHz), the formula is:

$$SAR = c \frac{dT}{dt}$$

where

c=the specific heat for the liquid

dT/dt=the temperature rises over the time

For the waveguide setup (600-75000 MHz), the formula is:

$$SAR = \frac{4P_W}{ab\delta} e^{-\frac{2z}{\delta}}$$

Page: 7/11

Template\_ACR.DDD.N.YI.MVGB.ISSUE\_COMOSAR Probe vM

This document shall not be reproduced, except in full or in part, without the written approval of MVG. The information contained herein is to be used only for the purpose for which it is submitted and is not to be released in whole or part without written approval of MVG.



DocuSign Envelope ID: 8D8CB647-C2B4-4414-A550-C6E3F74EB7AD



COMOSAR E-FIELD PROBE CALIBRATION REPORT

Ref: ACR.108.1.25.BES.A

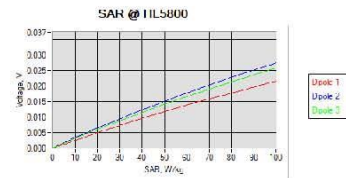
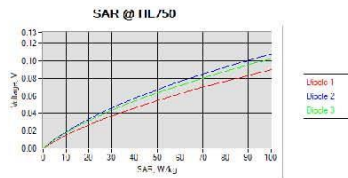
where

- a=the larger cross-sectional of the waveguide
- b=the smaller cross-sectional of the waveguide
- $\delta$ =the skin depth for the liquid in the waveguide
- Pw=the power delivered to the liquid

The below table summarize the ConvF for the calibrated liquid. The curves give examples for the measured SAR depending on the voltage in some liquid.

Liquid	Frequency (MHz*)	ConvF
HL750	750	1.39
HL850	850	1.32
HL900	900	1.33
HL1800	1800	1.50
HL1900	1900	1.58
HL2000	2000	1.63
HL2300	2300	1.64
HL2450	2450	1.63
HL2600	2600	1.52
HL3300	3300	1.36
HL3500	3500	1.39
HL3700	3700	1.35
HL3900	3900	1.41
HL4200	4200	1.58
HL4600	4600	1.61
HL4900	4900	1.38
HL5200	5200	1.37
HL5400	5400	1.37
HL5600	5600	1.36
HL5800	5800	1.35

(\*) Frequency validity is +/-50MHz below 600MHz, +/-100MHz from 600MHz to 6GHz and +/-700MHz above 6GHz



6 VERIFICATION RESULTS

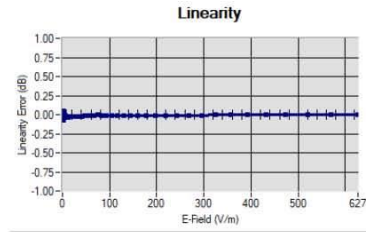
The figures below represent the measured linearity and axial isotropy for this probe. The probe specification is +/-0.2 dB for linearity and +/-0.15 dB for axial isotropy.

DocuSign Envelope ID: 8D8CB647-C2B4-4414-A550-C6E3F74EB7AD

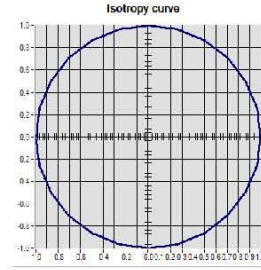


COMOSAR E-FIELD PROBE CALIBRATION REPORT

Ref: ACR.108.1.25.BES.A



Linearity: +/-1.54% (+/-0.07dB)



Isotropy: +/-0.18% (+/-0.01dB)

DocuSign Envelope ID: 8D8CB647-C2B4-4414-A550-C6E3F74EB7AD



**COMOSAR E-FIELD PROBE CALIBRATION REPORT**

Ref: ACR.108.1.25.BES.A

**7 LIST OF EQUIPMENT**

Equipment Summary Sheet				
Equipment Description	Manufacturer / Model	Identification No.	Current Calibration Date	Next Calibration Date
CALIPROBE Test Bench	Version 2	NA	Validated. No cal required.	Validated. No cal required.
Network Analyzer	Rohde & Schwarz ZVM	100203	08/2021	08/2026
Network Analyzer – Calibration kit	Rohde & Schwarz ZV-Z235	101223	07/2022	07/2027
Multimeter	Keithley 2000	4013982	02/2023	02/2026
Signal Generator	Rohde & Schwarz SMB	183277	05/2022	05/2026
Amplifier	MVG	MODU-023-C-0002	Characterized prior to test. No cal required.	Characterized prior to test. No cal required.
Power Meter	NI-USB 5680	170100013	06/2021	06/2026
USB Sensor	Keysight U2000A	SN: MY62340002	10/2024	10/2027
Directional Coupler	Krytar 158020	131467	Characterized prior to test. No cal required.	Characterized prior to test. No cal required.
Fluoroptic Thermometer	LumaSense Luxtron 812	94264	09/2022	09/2025
Coaxial cell	MVG	SN 32/16 COAXCELL_1	Validated. No cal required.	Validated. No cal required.
Waveguide	MVG	SN 32/16 WG2_1	Validated. No cal required.	Validated. No cal required.
Liquid transition	MVG	SN 32/16 WGLIQ_0G600_1	Validated. No cal required.	Validated. No cal required.
Waveguide	MVG	SN 32/16 WG4_1	Validated. No cal required.	Validated. No cal required.
Liquid transition	MVG	SN 32/16 WGLIQ_0G900_1	Validated. No cal required.	Validated. No cal required.
Waveguide	MVG	SN 32/16 WG6_1	Validated. No cal required.	Validated. No cal required.
Liquid transition	MVG	SN 32/16 WGLIQ_1G500_1	Validated. No cal required.	Validated. No cal required.
Waveguide	MVG	SN 32/16 WG8_1	Validated. No cal required.	Validated. No cal required.
Liquid transition	MVG	SN 32/16 WGLIQ_1G800B_1	Validated. No cal required.	Validated. No cal required.
Liquid transition	MVG	SN 32/16 WGLIQ_1G800H_1	Validated. No cal required.	Validated. No cal required.

Page: 10/11

**Template\_ACR.DDD.N.YI.MVGB.ISSUE\_COMOSAR\_Probe\_vM**

*This document shall not be reproduced, except in full or in part, without the written approval of MVG. The information contained herein is to be used only for the purpose for which it is submitted and is not to be released in whole or part without written approval of MVG.*

DocuSign Envelope ID: 8D8CB647-C2B4-4414-A550-C6E3F74EB7AD



COMOSAR E-FIELD PROBE CALIBRATION REPORT

Ref: ACR.108.1.25.BES.A

Waveguide	MVG	SN 32/16 WG10_1	Validated. No cal required.	Validated. No cal required.
Liquid transition	MVG	SN 32/16 WGLIQ_3G500_1	Validated. No cal required.	Validated. No cal required.
Waveguide	MVG	SN 32/16 WG12_1	Validated. No cal required.	Validated. No cal required.
Liquid transition	MVG	SN 32/16 WGLIQ_5G000_1	Validated. No cal required.	Validated. No cal required.
Waveguide	MVG	SN 32/16 WG14_1	Validated. No cal required.	Validated. No cal required.
Liquid transition	MVG	SN 32/16 WGLIQ_7G000_1	Validated. No cal required.	Validated. No cal required.
Temperature / Humidity Sensor	Testo 184 H1	44235403	02/2024	02/2027



## SAR Reference Dipole Calibration Report

Ref : ACR.53.29.24.BES.A

**SHENZHEN NTEK TESTING TECHNOLOGY  
CO., LTD.**

**BUILDING E, FENDA SCIENCE PARK, SANWEI  
COMMUNITY, XIXIANG STREET,  
BAO'AN DISTRICT, SHENZHEN GUANGDONG, CHINA**

**MVG COMOSAR REFERENCE DIPOLE**

**FREQUENCY: 2450 MHZ**

**SERIAL NO.: SN 03/15DIP2G450-352**

**Calibrated at MVG**

**Z.I. de la pointe du diable**

**Technopôle Brest Iroise – 295 avenue Alexis de Rochon  
29280 PLOUZANE - FRANCE**

**Calibration date: 02/21/2024**



Accreditations #2-6789 and #2-6814  
Scope available on [www.cofrac.fr](http://www.cofrac.fr)

**The use of the Cofrac brand and the accreditation references is prohibited from any reproduction.**

### *Summary:*

This document presents the method and results from an accredited SAR reference dipole calibration performed in MVG using the COMOSAR test bench. All calibration results are traceable to national metrology institutions.



SAR REFERENCE DIPOLE CALIBRATION REPORT

Ref : ACR.53.29.24.BES.A

	<i>Name</i>	<i>Function</i>	<i>Date</i>	<i>Signature</i>
<i>Prepared by :</i>	Pedro Ruiz	Measurement Responsible	2/22/2024	
<i>Checked &amp; approved by:</i>	Jérôme Luc	Technical Manager	2/22/2024	
<i>Authorized by:</i>	Yann Toutain	Laboratory Director	2/27/2024	

Yann  
Toutain ID   
Signature numérique de Yann Toutain ID  
Date : 2024.02.27 08:57:39 +01'00'

	<i>Customer Name</i>
<i>Distribution :</i>	SHENZHEN NTEK TESTING TECHNOLOGY CO., LTD.

<i>Issue</i>	<i>Name</i>	<i>Date</i>	<i>Modifications</i>
A	Pedro Ruiz	2/22/2024	Initial release





SAR REFERENCE DIPOLE CALIBRATION REPORT

Ref: ACR.53.29.24.BES.A

TABLE OF CONTENTS

1	Introduction.....	4
2	Device Under Test .....	4
3	Product Description .....	4
3.1	General Information .....	4
4	Measurement Method .....	5
4.1	Mechanical Requirements .....	5
4.2	S11 parameter Requirements .....	5
4.3	SAR Requirements .....	5
5	Measurement Uncertainty.....	5
5.1	Mechanical dimensions .....	5
5.2	S11 Parameter .....	5
5.3	SAR .....	5
6	Calibration Results.....	6
6.1	Mechanical Dimensions .....	6
6.2	S11 parameter .....	6
6.3	SAR .....	6
7	List of Equipment .....	8



SAR REFERENCE DIPOLE CALIBRATION REPORT

Ref: ACR.53.29.24.BES.A

**1 INTRODUCTION**

This document contains a summary of the requirements set forth by the IEC/IEEE 62209-1528 and FCC KDB865664 D01 standards for reference dipoles used for SAR measurement system validations and the measurements that were performed to verify that the product complies with the fore mentioned standards.

**2 DEVICE UNDER TEST**

Device Under Test	
Device Type	COMOSAR 2450 MHz REFERENCE DIPOLE
Manufacturer	MVG
Model	SID2450
Serial Number	SN 03/15DIP2G450-352
Product Condition (new / used)	Used

**3 PRODUCT DESCRIPTION**

**3.1 GENERAL INFORMATION**

MVG’s COMOSAR Validation Dipoles are built in accordance to the IEC/IEEE 62209-1528 and FCC KDB865664 D01 standards. The product is designed for use with the COMOSAR test bench only.



**Figure 1 – MVG COMOSAR Validation Dipole**





**SAR REFERENCE DIPOLE CALIBRATION REPORT**

Ref: ACR.53.29.24.BES.A

**4 MEASUREMENT METHOD**

**4.1 MECHANICAL REQUIREMENTS**

The IEC/IEEE 62209-1528 and FCC KDB865664 D01 standards specify the mechanical components and dimensions of the validation dipoles, with the dimension's frequency and phantom shell thickness dependent. The COMOSAR test bench employs a 2 mm phantom shell thickness therefore the dipoles sold for use with the COMOSAR test bench comply with the requirements set forth for a 2 mm phantom shell thickness. A direct method is used with a ISO17025 calibrated caliper.

**4.2 S11 PARAMETER REQUIREMENTS**

The dipole used for SAR system validation measurements and checks must have a S11 of -20 dB or better. The S11 measurement shall be performed against a liquid filled flat phantom, with the phantom constructed as outlined in the fore mentioned standards. A direct method is used with a network analyser and its calibration kit, both with a valid ISO17025 calibration.

**4.3 SAR REQUIREMENTS**

The IEC/IEEE 62209-1528 and FCC KDB865664 D01 standards provide requirements for reference dipoles used for system validation measurements. The following measurements were performed to verify that the product complies with the fore-mentioned standards.

**5 MEASUREMENT UNCERTAINTY**

**5.1 MECHANICAL DIMENSIONS**

For the measurement in the range 0-300mm, the estimated expanded uncertainty (k=2) in calibration for the dimension measurement in mm is +/-0.20 mm with respect to measurement conditions.

For the measurement in the range 300-450mm, the estimated expanded uncertainty (k=2) in calibration for the dimension measurement in mm is +/-0.44 mm with respect to measurement conditions.

**5.2 S11 PARAMETER**

The estimated expanded uncertainty (k=2) in calibration for the S11 parameter in linear is +/-0.08 with respect to measurement conditions.

**5.3 SAR**

The guidelines outlined in the IEC/IEEE 62209-1528 and FCC KDB865664 D01 standards were followed to generate the measurement uncertainty for validation measurements.

The estimated expanded uncertainty (k=2) in calibration for the 1g and 10g SAR measurement in W/kg is +/-19% with respect to measurement conditions.



SAR REFERENCE DIPOLE CALIBRATION REPORT

Ref: ACR.53.29.24.BES.A

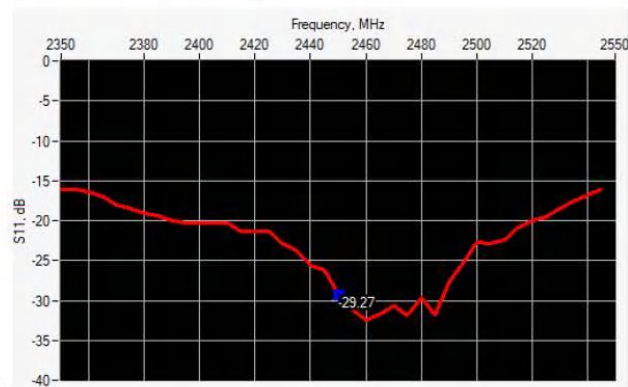
6 CALIBRATION RESULTS

6.1 MECHANICAL DIMENSIONS

L mm		h mm		d mm	
Measured	Required	Measured	Required	Measured	Required
-	51.50 +/- 2%	-	30.40 +/- 2%	-	3.60 +/- 2%

6.2 S11 PARAMETER

6.2.1 S11 parameter in Head Liquid



Frequency (MHz)	S11 parameter (dB)	Requirement (dB)	Impedance
2450	-29.27	-20	53.6Ω + 0.1jΩ

6.3 SAR

The IEC/IEEE 62209-1528 and FCC KDB865664 D01 standards state that the system validation measurements must be performed using a reference dipole meeting the fore mentioned return loss and mechanical dimension requirements. The validation measurement must be performed against a liquid filled flat phantom, with the phantom constructed as outlined in the fore mentioned standards. Per the standards, the dipole shall be positioned below the bottom of the phantom, with the dipole length centered and parallel to the longest dimension of the flat phantom, with the top surface of the dipole at the described distance from the bottom surface of the phantom.

6.3.1 SAR with Head Liquid

The IEC/IEEE 62209-1528 and FCC KDB865664 D01 standards state that the system validation measurements should produce the SAR values shown below (for phantom thickness of 2 mm), within the uncertainty for the system validation. All SAR values are normalized to 1 W forward power. In bracket, the measured SAR is given with the used input power.

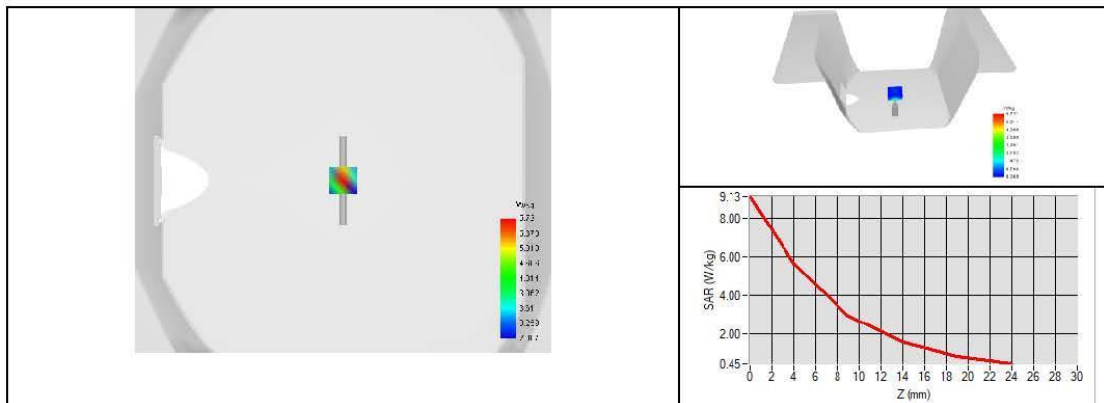


SAR REFERENCE DIPOLE CALIBRATION REPORT

Ref: ACR.53.29.24.BES.A

Software	OPENSAR V5
Phantom	SN 13/09 SAM68
Probe	3523-EPGO-429
Liquid	Head Liquid Values: eps' : 42.1 sigma : 1.83
Distance between dipole center and liquid	10.0 mm
Area scan resolution	dx=8mm/dy=8mm
Zoon Scan Resolution	dx=5mm/dy=5mm/dz=5mm
Frequency	2450 MHz
Input power	20 dBm
Liquid Temperature	20 +/- 1 °C
Lab Temperature	20 +/- 1 °C
Lab Humidity	30-70 %

Frequency	1g SAR (W/kg)			10g SAR (W/kg)		
	Measured	Measured normalized to 1W	Target normalized to 1W	Measured	Measured normalized to 1W	Target normalized to 1W
2450 MHz	5.00	50.05	52.40	2.38	23.80	24.00





## SAR Reference Waveguide Calibration Report

Ref : ACR.53.31.24.BES.A

**SHENZHEN NTEK TESTING TECHNOLOGY  
CO., LTD.**

**BUILDING E, FENDA SCIENCE PARK, SANWEI  
COMMUNITY, XIXIANG STREET, BAO'AN  
DISTRICT, SHENZHEN GUANGDONG, CHINA MVG  
COMOSAR REFERENCE WAVEGUIDE**

**FREQUENCY: 5000-6000 MHZ  
SERIAL NO.: SN 13/14 WGA 33**

**Calibrated at MVG**

**Z.I. de la pointe du diable**

**Technopôle Brest Iroise – 295 avenue Alexis de Rochon  
29280 PLOUZANE - FRANCE**

**Calibration date: 02/21/2024**



Accreditations #2-6789 and #2-6814  
Scope available on [www.cofrac.fr](http://www.cofrac.fr)

**The use of the Cofrac brand and the accreditation references is prohibited from any reproduction.**

### *Summary:*

This document presents the method and results from an accredited SAR reference waveguide calibration performed at MVG, using the COMOSAR test bench. The test results covered by accreditation are traceable to the International System of Units (SI).





**SAR REFERENCE WAVEGUIDE CALIBRATION REPORT**

Ref : ACR.53.31.24.BES.A

	<i>Name</i>	<i>Function</i>	<i>Date</i>	<i>Signature</i>
<i>Prepared by :</i>	Pedro Ruiz	Measurement Responsible	2/22/2024	
<i>Checked &amp; approved by:</i>	Jérôme Luc	Technical Manager	2/22/2024	
<i>Authorized by:</i>	Yann Toutain	Laboratory Director	2/27/2024	

**Yann Toutain ID**  
 Signature numérique de Yann Toutain ID  
 Date : 2024.02.27 08:58:45 +01'00'

	<i>Customer Name</i>
<i>Distribution :</i>	SHENZHEN NTEK TESTING TECHNOLOGY CO., LTD.

<i>Issue</i>	<i>Name</i>	<i>Date</i>	<i>Modifications</i>
A	Pedro Ruiz	2/22/2024	Initial release



SAR REFERENCE WAVEGUIDE CALIBRATION REPORT

Ref: ACR.53.31.24.BES.A

TABLE OF CONTENTS

1	Introduction.....	4
2	Device Under Test .....	4
3	Product Description .....	4
3.1	General Information .....	4
4	Measurement Method .....	4
4.1	Mechanical Requirements .....	4
4.2	S11 parameter Requirements .....	4
4.3	SAR Requirements .....	5
5	Measurement Uncertainty.....	5
5.1	Mechanical dimensions .....	5
5.2	S11 Parameter .....	5
5.3	SAR .....	5
6	Calibration Results.....	5
6.1	Mechanical Dimensions .....	5
6.2	S11 parameter .....	6
6.3	SAR .....	6
7	List of Equipment .....	9



SAR REFERENCE WAVEGUIDE CALIBRATION REPORT

Ref: ACR.53.31.24.BES.A

**1 INTRODUCTION**

This document contains a summary of the requirements set forth by the IEC/IEEE 62209-1528 and FCC KDB865664 D01 standards for reference waveguides used for SAR measurement system validations and the measurements that were performed to verify that the product complies with the fore mentioned standards.

**2 DEVICE UNDER TEST**

Device Under Test	
Device Type	COMOSAR 5000-6000 MHz REFERENCE WAVEGUIDE
Manufacturer	MVG
Model	SWG5500
Serial Number	SN 13/14 WGA 33
Product Condition (new / used)	Used

**3 PRODUCT DESCRIPTION**

**3.1 GENERAL INFORMATION**

MVG’s COMOSAR Validation Waveguides are built in accordance to the IEC/IEEE 62209-1528 and FCC KDB865664 D01 standards.

**4 MEASUREMENT METHOD**

**4.1 MECHANICAL REQUIREMENTS**

The IEC/IEEE 62209-1528 and FCC KDB865664 D01 standards specify the mechanical components and dimensions of the validation dipoles, with the dimension’s frequency and phantom shell thickness dependent. The COMOSAR test bench employs a 2 mm phantom shell thickness therefore the dipoles sold for use with the COMOSAR test bench comply with the requirements set forth for a 2 mm phantom shell thickness. A direct method is used with a ISO17025 calibrated caliper.

**4.2 S11 PARAMETER REQUIREMENTS**

The dipole used for SAR system validation measurements and checks must have a S11 of -8 dB or better. The S11 measurement shall be performed against a liquid filled flat phantom, with the phantom constructed as outlined in the fore mentioned standards. A direct method is used with a network analyser and its calibration kit, both with a valid ISO17025 calibration.



SAR REFERENCE WAVEGUIDE CALIBRATION REPORT

Ref: ACR.53.31.24.BES.A

4.3 SAR REQUIREMENTS

The IEC/IEEE 62209-1528 and FCC KDB865664 D01 standards provide requirements for reference dipoles used for system validation measurements. The following measurements were performed to verify that the product complies with the fore-mentioned standards.

5 MEASUREMENT UNCERTAINTY

5.1 MECHANICAL DIMENSIONS

The estimated expanded uncertainty (k=2) in calibration for the dimension measurement in mm is +/- 0.20 mm with respect to measurement conditions.

5.2 S11 PARAMETER

The estimated expanded uncertainty (k=2) in calibration for the S11 parameter in linear is +/-0.08 with respect to measurement conditions.

5.3 SAR

The guidelines outlined in the IEC/IEEE 62209-1528 and FCC KDB865664 D01 standards were followed to generate the measurement uncertainty for validation measurements.

The estimated expanded uncertainty (k=2) in calibration for the 1g and 10g SAR measurement in W/kg is +/-19% with respect to measurement conditions.

6 CALIBRATION RESULTS

6.1 MECHANICAL DIMENSIONS

Frequency (MHz)	L (mm)		W (mm)		L <sub>f</sub> (mm)		W <sub>f</sub> (mm)	
	Required	Measured	Required	Measured	Required	Measured	Required	Measured
5800	40.39 ± 0.13	-	20.19 ± 0.13	-	81.03 ± 0.13	-	61.98 ± 0.13	-

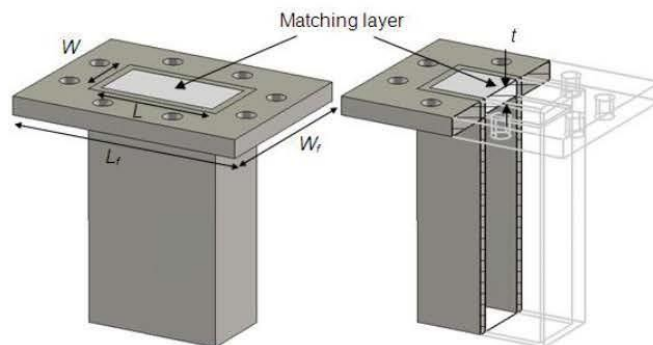


Figure 1: Validation Waveguide Dimensions



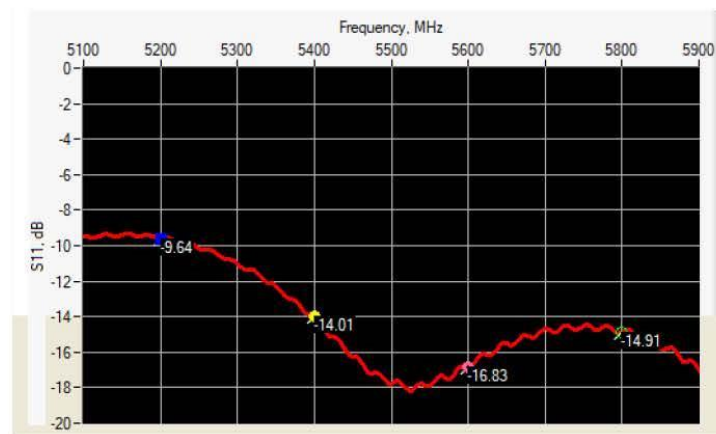


SAR REFERENCE WAVEGUIDE CALIBRATION REPORT

Ref: ACR.53.31.24.BES.A

6.2 S11 PARAMETER

6.2.1 S11 parameter In Head Liquid



Frequency (MHz)	S11 parameter (dB)	Requirement (dB)	Impedance
5200	-9.64	-8	25.80 Ω - 6.58 jΩ
5400	-14.01	-8	51.53 Ω + 20.60 jΩ
5600	-16.83	-8	44.12 Ω - 12.35 jΩ
5800	-14.91	-8	38.53 Ω + 11.21 jΩ

6.3 SAR

The IEC/IEEE 62209-1528 and FCC KDB865664 D01 standards state that the system validation measurements must be performed using a reference waveguide meeting the fore mentioned return loss and mechanical dimension requirements. The validation measurement must be performed with the matching layer placed in the open end of the waveguide, with the waveguide and matching layer in direct contact with the phantom shell.

6.3.1 SAR With Head Liquid

At those frequencies, the target SAR value can not be generic. Hereunder is the target SAR value defined by MVG, within the uncertainty for the system validation. All SAR values are normalized to 1 W net power. In bracket, the measured SAR is given with the used input power.



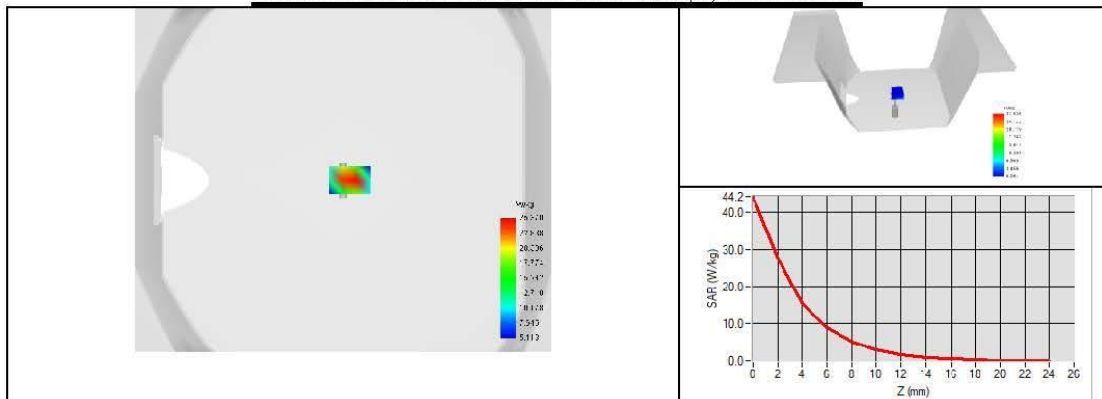
**SAR REFERENCE WAVEGUIDE CALIBRATION REPORT**

Ref: ACR.53.31.24.BES.A

Software	OPENSAR V5
Phantom	SN 13/09 SAM68
Probe	3523-EPGO-429
Liquid	Head Liquid Values 5200 MHz: eps' :34.16 sigma : 4.42 Head Liquid Values 5400 MHz: eps' :33.63 sigma : 4.64 Head Liquid Values 5600 MHz: eps' :33.12 sigma : 4.87 Head Liquid Values 5800 MHz: eps' :32.57 sigma : 5.12
Distance between dipole waveguide and liquid	0 mm
Area scan resolution	dx=8mm/dy=8mm
Zoon Scan Resolution	dx=4mm/dy=4m/dz=2mm
Frequency	5200 MHz 5400 MHz 5600 MHz 5800 MHz
Input power	20 dBm
Liquid Temperature	20 +/- 1 °C
Lab Temperature	20 +/- 1 °C
Lab Humidity	30-70 %

Frequency (MHz)	1 g SAR (W/kg)			10 g SAR (W/kg)		
	Measured	Measured normalized to 1W	Target normalized to 1W	Measured	Measured normalized to 1W	Target normalized to 1W
5200	16.26	162.59	159.00	5.62	56.21	56.90
5400	15.98	159.81	166.40	5.50	55.00	58.43
5600	17.91	179.15	173.80	6.10	61.01	59.97
5800	18.22	182.20	181.20	6.13	61.32	61.50

**SAR MEASUREMENT PLOTS @ 5200 MHz**

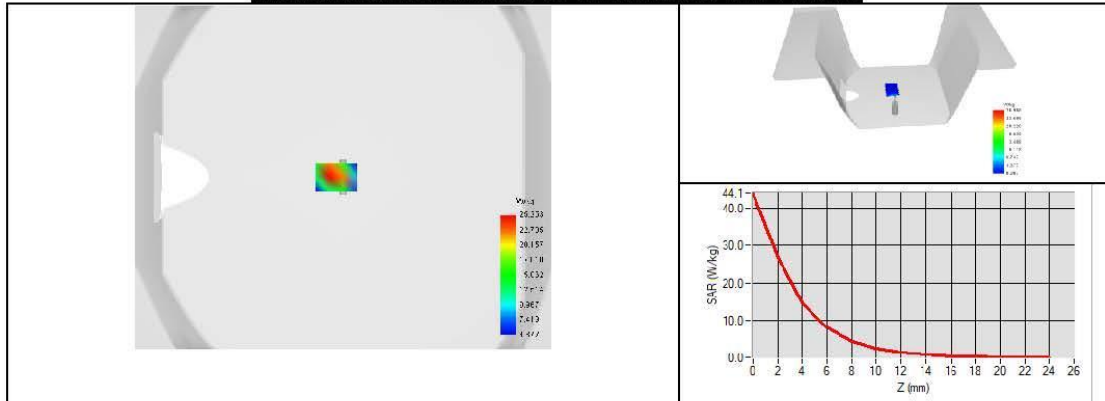




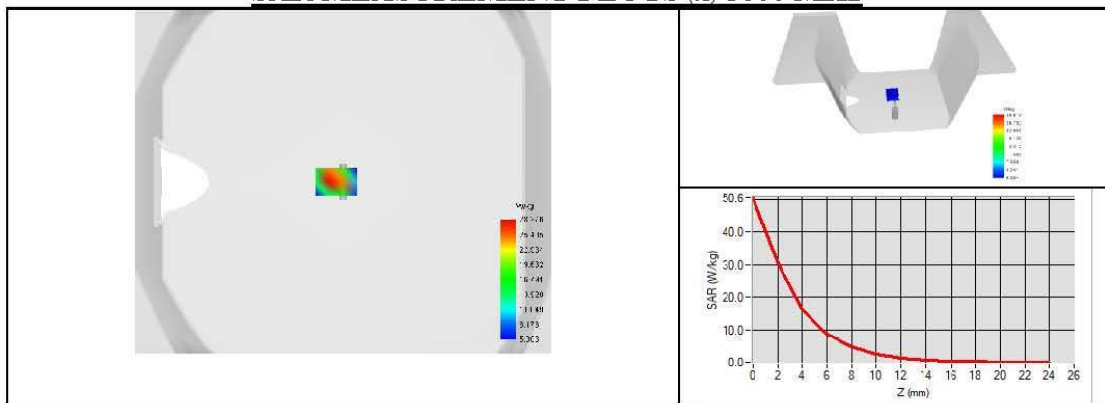
SAR REFERENCE WAVEGUIDE CALIBRATION REPORT

Ref: ACR.53.31.24.BES.A

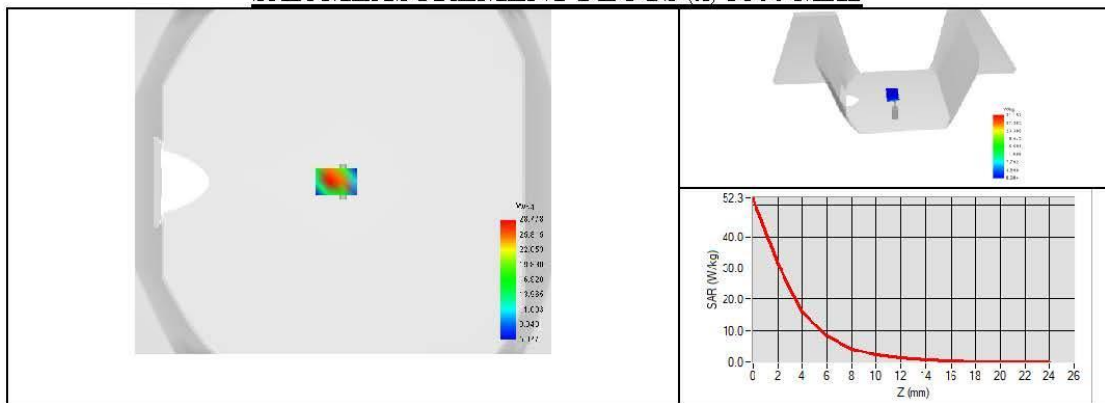
**SAR MEASUREMENT PLOTS @ 5400 MHz**



**SAR MEASUREMENT PLOTS @ 5600 MHz**



**SAR MEASUREMENT PLOTS @ 5800 MHz**



<Justification of the extended calibration>

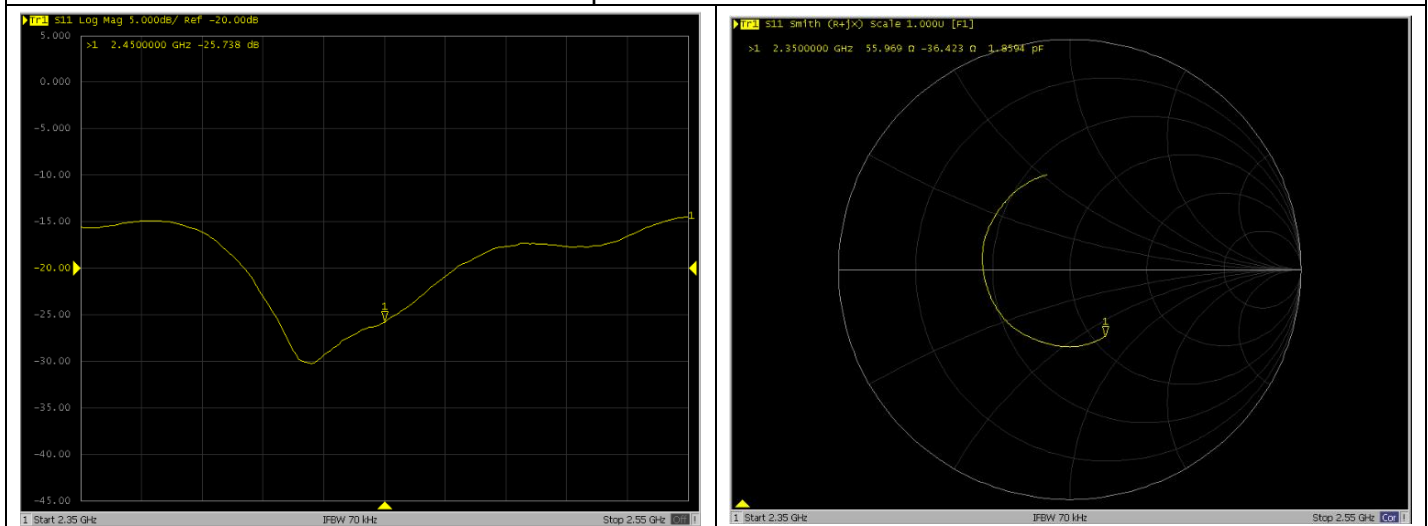
If dipoles are verified in return loss (<-20dB, within 20% of prior calibration for below 3GHz, and <-8dB, within 20% of prior calibration for 5GHz to 6GHz), and in impedance (within 5 ohm of prior calibration), the annual calibration is not necessary and the calibration interval can be extended.

<Head 2450MHz>

Return Loss (dB)	Delta (%)	Impedance	Delta(ohm)	Date of Measurement
-29.27	-	53.6	-	Feb. 21, 2024
-25.738	12.07	55.969	2.369	Feb. 13, 2025

The return loss is <-20dB, within 20% of prior calibration; the impedance is within 5 ohm of prior calibration. Therefore the verification result should support extended calibration.

Dipole Verification Data

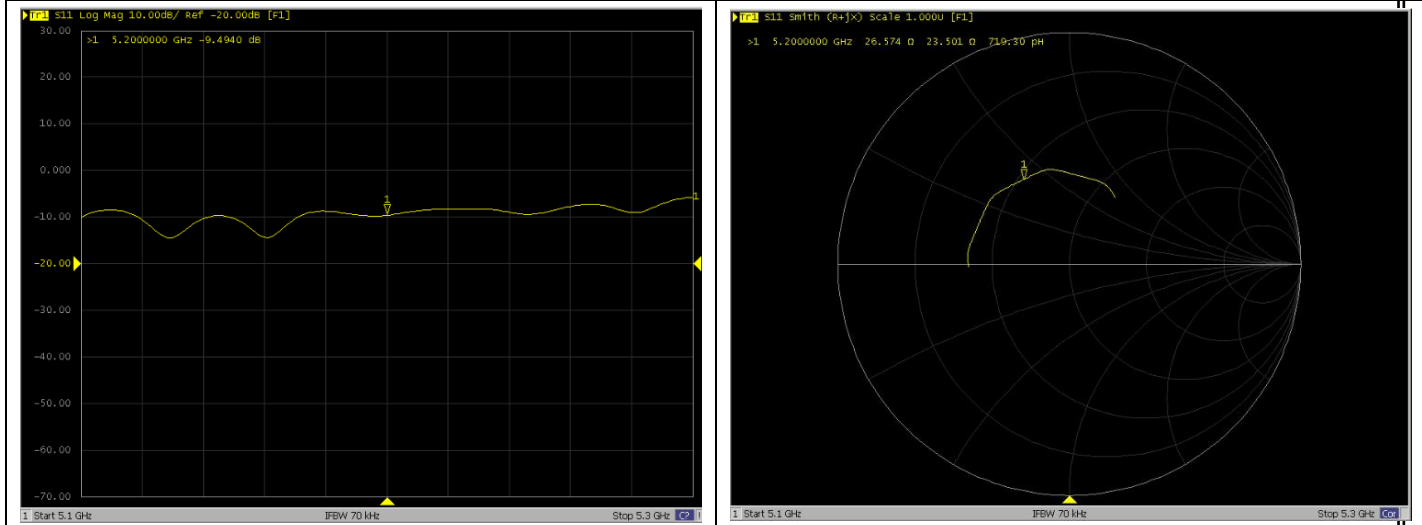


<Head 5200MHz>

Return Loss (dB)	Delta (%)	Impedance	Delta(ohm)	Date of Measurement
-9.64	-	25.8	-	Feb. 21, 2024
-9.494	1.51	26.574	0.774	Feb. 13, 2025

The return loss is <-8dB, within 20% of prior calibration; the impedance is within 5 ohm of prior calibration. Therefore the verification result should support extended calibration.

Dipole Verification Data

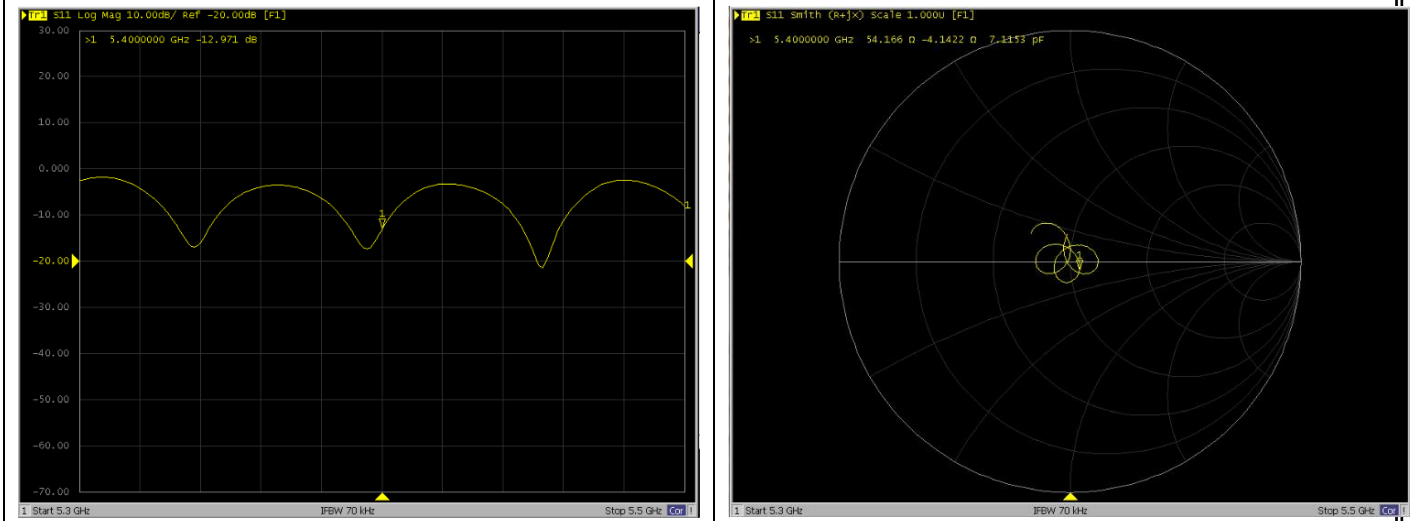


<Head 5400MHz>

Return Loss (dB)	Delta (%)	Impedance	Delta(ohm)	Date of Measurement
-14.01	-	51.53	-	Feb. 21, 2024
-12.971	7.416	54.166	2.636	Feb. 13, 2025

The return loss is <-8dB, within 20% of prior calibration; the impedance is within 5 ohm of prior calibration. Therefore the verification result should support extended calibration.

Dipole Verification Data

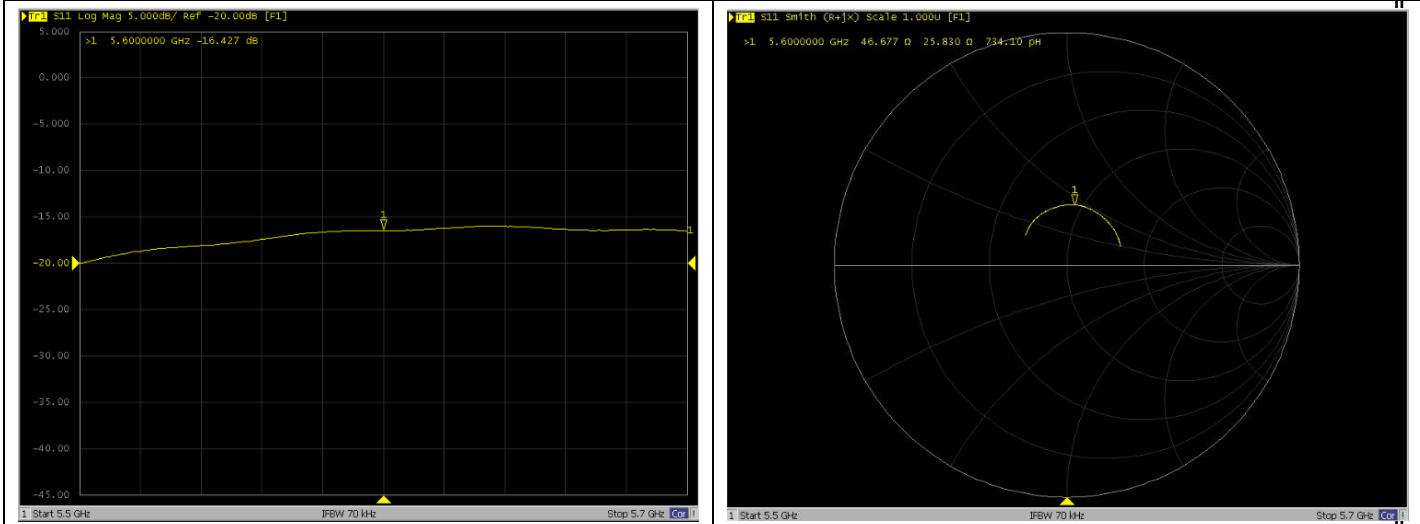


<Head 5600Hz>

Return Loss (dB)	Delta (%)	Impedance	Delta(ohm)	Date of Measurement
-16.83	-	44.12	-	Feb. 21, 2024
-16.427	2.395	46.677	2.557	Feb. 13, 2025

The return loss is <-8dB, within 20% of prior calibration; the impedance is within 5 ohm of prior calibration. Therefore the verification result should support extended calibration.

Dipole Verification Data

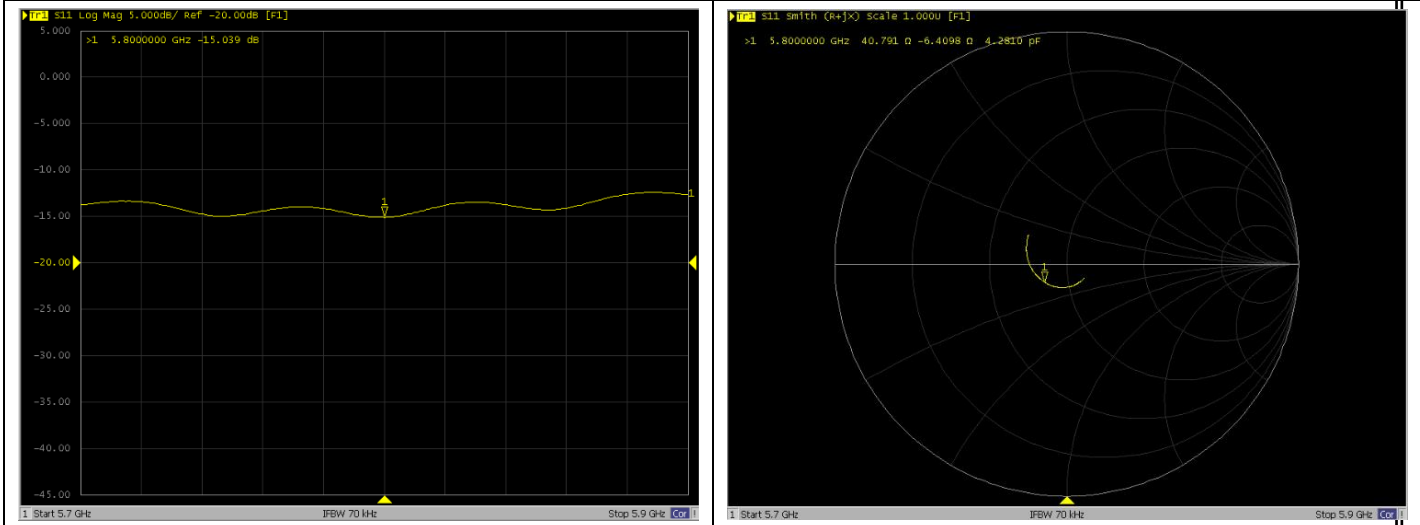


<Head 5800MHz>

Return Loss (dB)	Delta (%)	Impedance	Delta(ohm)	Date of Measurement
-14.91	-	38.53	-	Feb. 21, 2024
-15.039	0.865	40.791	2.261	Feb. 13, 2025

The return loss is <-8dB, within 20% of prior calibration; the impedance is within 5 ohm of prior calibration. Therefore the verification result should support extended calibration.

Dipole Verification Data



END