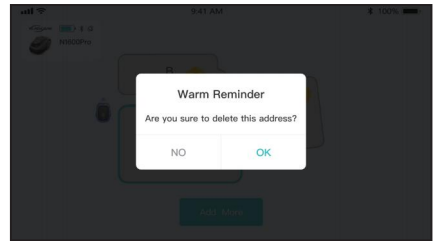
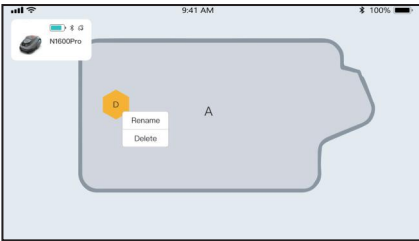


## Delete the area

1. To delete an area, no-go zone, channel, long press the area, no-go zone, channel to be delete, select **Delete**. Tap **OK** to confirm delete. Deleting an area will also remove all items within it.



## 4.5.5 What to Do If RTK Reference Station is Moved after Mapping

Do not move the RTK reference station after the map is created or the resulting working area will diverge from the designated task area. In the event of an RTK reference station relocation, reinstall it in its original position, or delete all maps and remap the area.

## 4.6 Mow



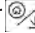

### 4.6.1 Preparation

If any unexpected problems arise, please press the **STOP** button and secure the robot. The **STOP** button holds top priority among all commands. If the lift sensor is activated, the robot will come to a halt.

Please press the **OK** button four times to unlock it.

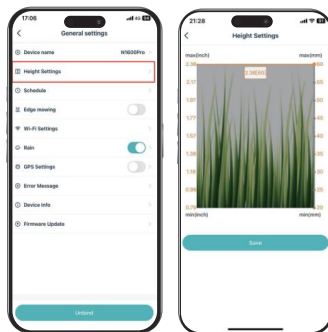
Please mow the task area no more than once a day as doing so may be harmful to your lawn. It is recommended to adjust the cutting height according to the grass height for each mowing as follows.

Grass Height	Cutting Height
40-60mm(1.57in-2.36in)	Cut by 40 mm(1.578in)
30-40mm(1.18in-1.57in)	Cut by 30 mm(1.18in)
20-30mm(0.79-1.18in)	Cut by 20 mm(0.79in)

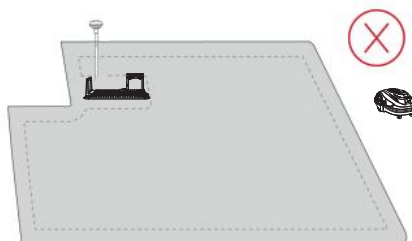
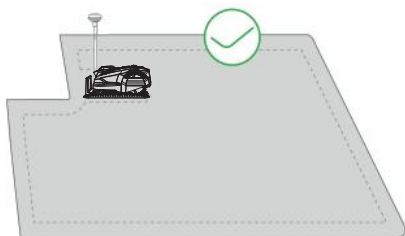
Before mowing, long press the button  to enter the state for adjusting the height, then press  or  adjust the cutting height. After confirm the height adjustment, Press this button  to save.

## APP controls the mowing height

1. In **General Settings**, Tap **Height Settings** to enter the height adjustment screen.
2. Adjust to the appropriate height and tap **Save** to save.



Make sure the robot is at the charging station or within the designated task area before starting to mow. If it isn't, manually move or guide it to the appropriate location.



## 4.6.2 Start Working

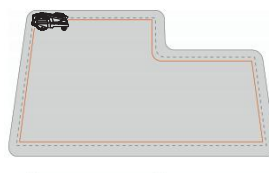
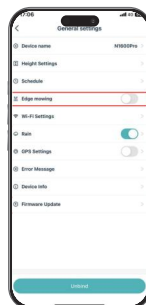
1. Ensure the robot is at the charging station and charging properly.
2. Tap **Mow**, and the robot will exit the station start working after three buzzes.



## Other parameters

### Edge mowing

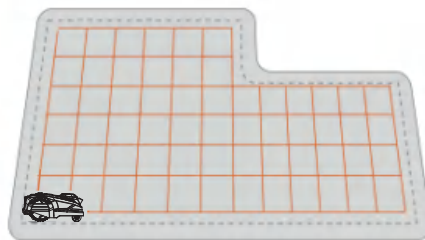
In **General Settings**, Tap **Edge Mowing**, when enabled, the robot will start the day's first task by trimming along the edge. When disabled, it will skip edge trimming.



## Cutting path mode

### Chess board path

The robot will work in straight rows both horizontally and vertically.



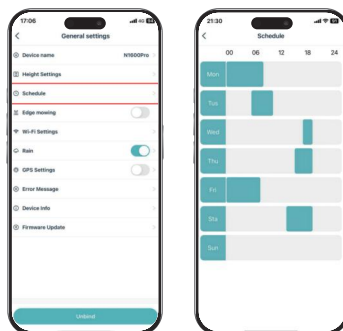
### When the robot enters an area where RTK signals are weak while mowing

The robot automatically walks at the current recorded operating angle. Visual guidance is used at this time. The walking effect is similar to the positioning coordinate guidance, until the machine runs to the place where the signal is strong.

## 4.7 APP Controls Task Scheduling

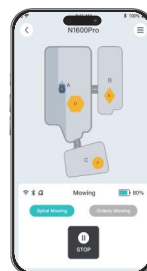
Tap **Schedule** in **General Settings**

to set the daily working time from Monday to Sunday.



## 4.8 View Status

On Home page to view the robot status. Display machine power, connection to APP and machine status.



Button/Icon	Name	Description
	Wi-Fi	Indicates the connected Wi-Fi signal strength.
	Bluetooth	Indicates the Bluetooth signal.
	RTK	Indicates connection to RTK.
	Battery Level	Indicates the remaining battery level.
	Stop	Indicates stopping work.
	Start	Indicates starting work.
	Go Home	Indicates return to charging station.

## 4.9 Settings

### 4.9.1 Device Information

**Device Name** — change the name of the robot.

**Height Settings** — adjusting the mowing height.

**Schedule** — management Task Planning.

**Zone Settings** — work area settings.

**Edge mowing** — On/Off setting determines if edge cutting is enabled when the machine starts.

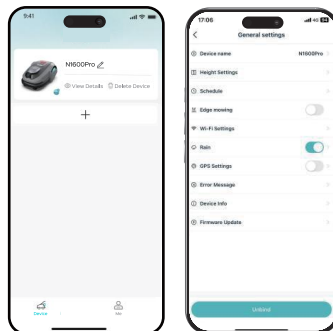
**Wi-Fi Settings** — set the robot network.

**Rain** — rain sensor, when enabled, the robot will stop working on rainy days.

**Error Message** — the robot's fault history and the time of occurrence.

**Device Info** — include model, serial number, version  
**Firmware Update** — check the firmware version of the robot.

**Unbind** — tap to unbind the current robot. A set of the robot can only be associated with one account and cannot be operated until it is bound. If you wish to transfer ownership of the robot, you must unbind it before proceeding.



### 4.9.2 Recharge

#### To perform recharge

On operation page, tap **HOME** button, or press  the button on the robot, then press  to guide the robot to the charging station.

**NOTE:** When performing the recharge function, the robot must be in the task area.

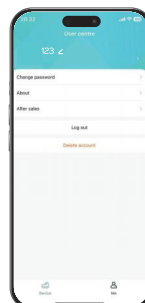


## 4.10 Me Page

**Change password** — Change your new password.

**About** — tap to access more information about YARDCARE.

**After sales** — how to contact with us.



## 5. Maintenance

**WARNING!** Always switch the mower off before cleaning and maintaining the mower.

**WARNING!** Unplug the power supply before cleaning and maintaining the charging station.

**WARNING!** Always wear protective, heavy gloves when changing the blades and cleaning the underside of the mower.

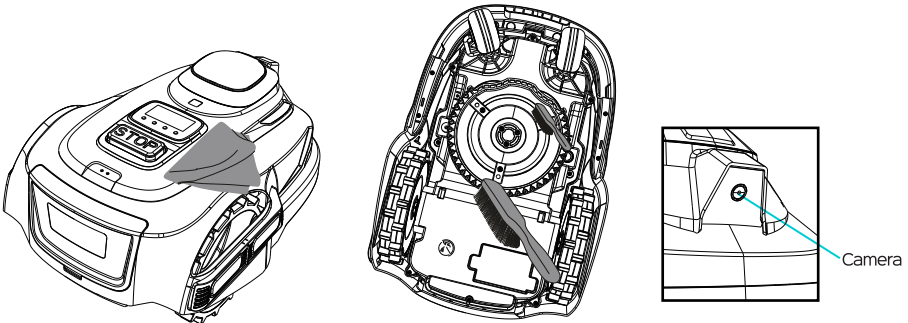
1. Regularly check screws and nuts for proper tightness. Maintain or replace defective parts to ensure safety.
2. Regular inspect the blades to ensure free rotation.

**NOTE:** When turning the mower over, place it on the lawn or a softer surface to avoid wearing and scratching the cover.

### 5.1 Cleaning

**WARNING!** Turn off the main power switch before cleaning.

1. Use a low-pressure washer and a soft brush or towel to clean the front part.
2. Use a hard brush to clean the grass clippings and debris from the blades, wheels and other parts on bottom.
3. Regularly check the rain sensors and wheels for mud or grass clippings and clean them with a brush.



**NOTE:** DO NOT wash the underside of the mower with water.

**NOTE:** Clean weeds on the underside of the machine regularly, so as not to affect the efficiency of grass cutting.

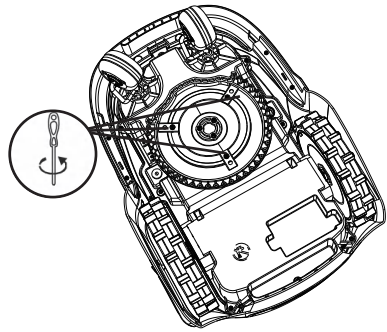
**NOTE:** Clean dust and sundry matter at the camera surface regularly to avoid misjudgment by the machine.

## 5.2 Replace the Blades

**WARNING!** Turn off the main power switch and put on protective gloves first.

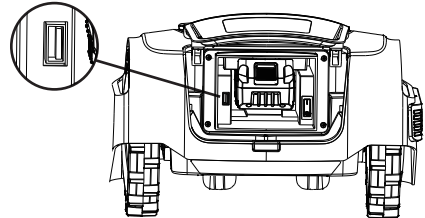
**WARNING!** Only use the original and designated blades as approved.

1. Replace all three blades and their screws at the same time when replacing.
2. Use a screwdriver to loosen or fasten the screws.
3. Check if the new blades can pivot freely.



## 5.3 Upgrade USB

1. Open the battery compartment.
2. Insert the USB upgrade disk (FAT format).
3. Automatically update and upgrade after booting up.



# 6. Troubleshooting

The following chart offers a guide to help identify an issue. If possible, repair by yourself. When the problem cannot be solved, consult an authorized dealer or repairer. **WARNING!** Please take protective measures.

Issue	Possible Causes	Solutions
Lawn mowers are difficult to connect with charging stations.	The camera is dirty.	Wipe the camera and try again.
The machine stops inexplicably while running.	RTK signal is poor or lost.	Check the RTK reference station installation position and indicator light status.
Abnormal vibration or Lawn mower makes abnormal noise.	Blade damage or missing.	Check and repair the blade fastening screws.
	The disc is loose.	
The robot rushed out of the boundary.	Charging station (map origin) moves.	Restart the machine and place it in the charging station to turn it on. If the charging station's position has changed, rebuild the map.
Automatic operation of the motor with high adjustment.	Button battery low power.	Please contact the after-sales service for assistance.

when there is an abnormality, the number of times the fault indicator flashers indicates the error code (see panel indicators). Below is a list of the error codes:

Error Code	Meaning	Solution
E01	Tilt error.	Place the robot on a horizontal surface and press the emergency stop button to clear any errors before continuing to work.
E02	Universal wheel off ground error.	
E03	Camera error.	Please wipe the camera and restart the machine. If the problem persists, please contact after-sales service.
E04	Camera communication error.	Restart the lawn mower and try again. If the problem persists, please contact after-sales service.
E05	Machine trapped alarm.	Press the Stop button to ensure that the machine is in the movable area, modify the map to create obstacles in that area.
E06	ADC channel failure.	Restart the lawn mower and try again. If the problem persists, please contact after-sales service.
E07	The map has not yet been created.	Please refer to the manual for the mapping part to use the APP to create a lawn map.
E08	Start outside the map boundary.	Press the stop button and move the machine within the map boundaries and try to start it.
E09	The temperature of the machine is too high	Please power off and try restarting when the temperature drops.
E10	Continuous malfunction of left and right wheel motors.	Press the stop button and move the lawn mower to a flat surface. Check for obstacles or restart the mower and try again. If the issue persists, contact after-sales service.
E11	Motor communication error.	Restart the lawn mower and try again. If the problem persists, please contact after-sales service.
E12	High motor malfunction.	Restart the lawn mower and try again. If the problem persists, please contact after-sales service.

## 7. Specifications

<b>Model No</b>	N1600Pro
<b>Feature</b>	
Cutting area	1600m <sup>2</sup> (17222.26sq.ft)
Appearance & Color	Selectable
Function Settings	Control Center+APP
Cutting Height Settings	Manual+APP
Charging Interface Type	Sideward Charging Interface
Obstacle Detection	AI Vision + Wheel Resistance
Safeguard	Lift/Tilt/Flip/Emergency Stop Button
Battery Settings	Pluggable Battery
System Upgrade	OTA or USB
<b>Functions</b>	
Multi Area Mowing	√
Intelligent Scheduling	√
Rain Sensor	√
Rain Sensor Delay	√
RTK Positioning	√
Cutting Height	20-60mm(0.79-2.36inch)
Cutting Diameter	180mm(7.08inch)
Hill Capability	Max slope 20 degree
APP Control	IOS or Andriod
Upgrade Interface	WIFI or USB
Motor Type	BLDC
Resume Cutting	√
Error Message Record	√
Time Synchronization	√
Gyroscope	√
Spiral Cut mode	√
Straight Cut mode	√
Emergency STOP Switch	√
Edge Cutting	√
Self-Charging Management	√
Arched Path Planning	√
<b>Battery</b>	
Type of Battery	Lithium-ion
Rated Voltage	18V
Battery Capacity	4000mAh
Charging time	140mins
Average working time	100mins
<b>Charger Parameters</b>	
Input	100-240V AC, 50/60Hz 48W
Output	20V 2.0A



Other parameters	
Machine Power	50W
Measurement	570x400x265mm(22.44x15.75x10.43inch)
Weight	9KG (19.84Lb)
Water Proofed	IPX4

## 8. Warranty

This warranty covers only defects of any material or quality of the product and components when the product and components thereof are being used under normal and ordinary conditions.

The limited warranty period of two years commences on the date of the original purchase of the product.

This limited warranty does not cover and excludes damage to your product or any component thereof caused by:

1. The normal deterioration of wear and tear parts.
2. Improper battery storage or operation of the product .
3. Use of any non-original battery.
4. Service, repair, and maintenance by unauthorized providers.

## FCC Statement

**Note:** This equipment has been tested and found to comply with the limits according to Part 15 of the FCC Rules of a Class B digital device. These limits are designed to provide reasonable protection against harmful interference in a residential installation. This equipment generates, uses, and can radiate radio frequency energy and, if not installed and used in accordance with the instructions, may cause harmful interference to radio communications or persons. However, there is no guarantee that interference will not occur in a particular installation. If this equipment does cause harmful interference to radio or television reception, the user is encouraged to try to correct the interference by one or more of the following measures:

- (1) Reorientate or relocate the receiving antenna.
- (2) Increase the separation between the equipment and receiver.
- (3) Plug the equipment into an outlet on a circuit different from that to which the receiver is connected.
- (4) Consult the manufacturer or an experienced radio/TV technician for help.

## FCC Radiation Exposure Statement

This equipment complies with FCC RF radiation exposure limits set forth for an uncontrolled environment. This compliance to FCC radiation exposure limits for an uncontrolled environment, and minimum of 20 cm (7.87 inch) separation between antenna and body.

## Warning

Changes or modifications of this product are not expressly approved by the party responsible for compliance (YARDCARE), and unauthorized modifications could void the user's authority to operate the equipment.

## Compliance Declaration

This device complies with Part 15 of the FCC Rules. Operation is subject to the following two conditions:

- (1) This device may not cause harmful interference.
- (2) This device must accept any interference received, including interference that may cause undesired operation.

